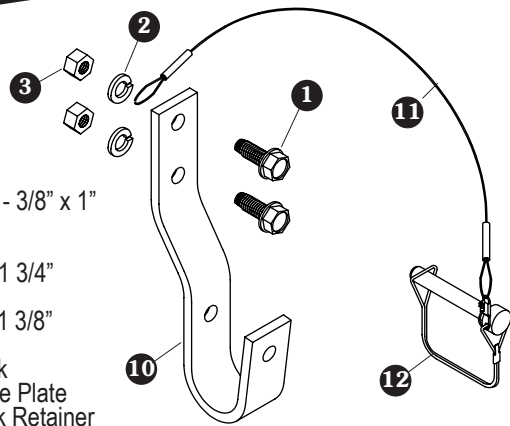
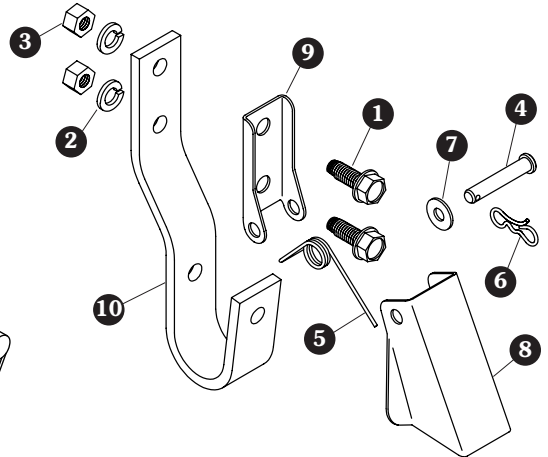


Item	Part #	Description
1.	1700400	Self-Tapping Screw - 3/8" x 1"
2.	1700434	Lock Washer - 3/8"
3.	1700407	Hex Nut - 3/8"
4.	1703133	Clevis Pin - 5/16" x 1 3/4"
5.	1703134	Torsion Spring
6.	1704380	Bowtie Cotter Pin - 1 3/8"
7.	1700427	Flat Washer - 1/4"
8.	1114600	Crank Retainer Lock
9.	1114599	Crank Retainer Base Plate
10.	1101930	Offset J-Hook Crank Retainer
11.	1100574	Cable w/Snap
12.	1700526	Wire Lock Pin



Offset Crank Retainer

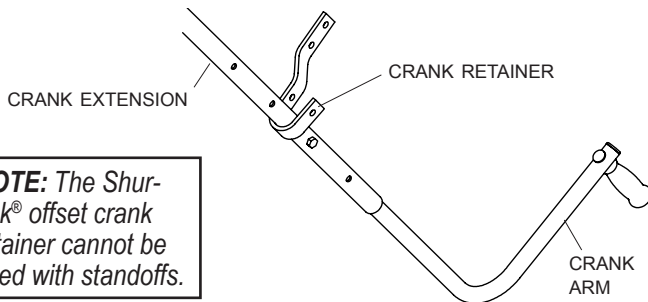


Pinless Offset Crank Retainer

Offset pinless crank retainers hold crank arms securely in place with a spring loaded locking system.

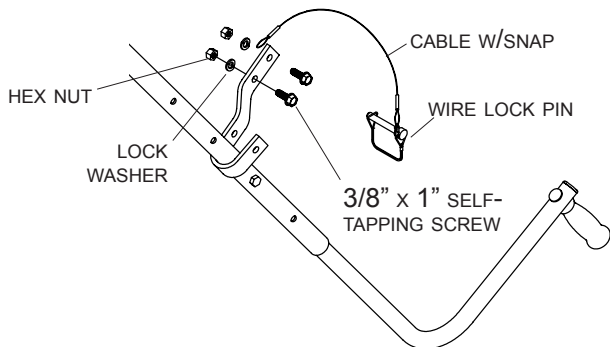
NOTE: Locate crank retainer where hook will go around 1 3/4" diameter crank extension, not around crank arm.

STEP 1: To determine crank retainer location on box, roll tarp closed with roll tube under latchplate and with crank arm assembly in closed position. Locate crank retainer where it will hold crank arm assembly securely in place while under 40 to 60 pounds of pressure.



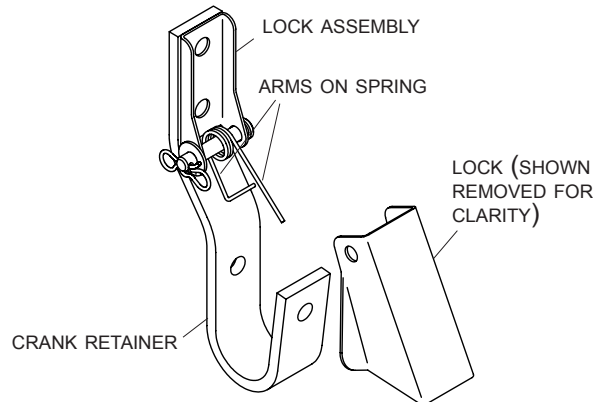
NOTE: The Shur-Lok® offset crank retainer cannot be used with standoffs.

STEP 2: Mark and drill 5/16" holes. Fasten offset crank retainer to box with 3/8" x 1" self-tapping screws. Secure end of cable behind crank retainer as shown if using wire lock pin.

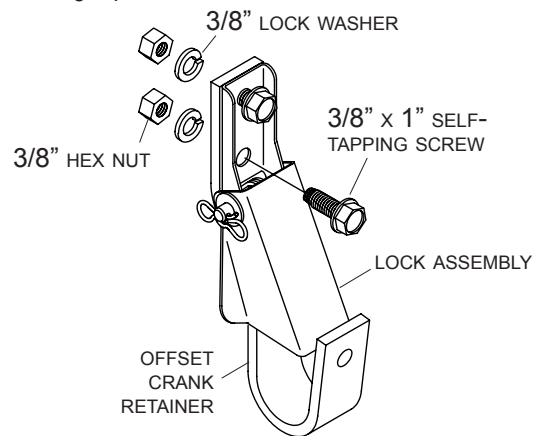


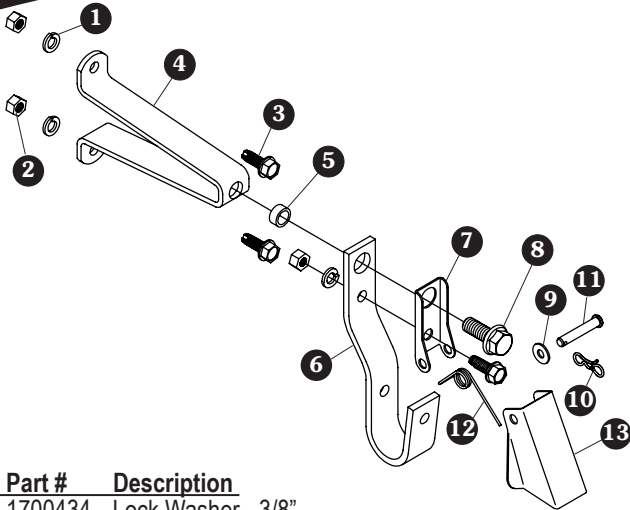
NOTE: If you are installing the pinless option, continue with steps 3 and 4.

STEP 3: Unfasten and remove crank retainer from box. Hold lock assembly against crank retainer. Position arms on spring as shown.



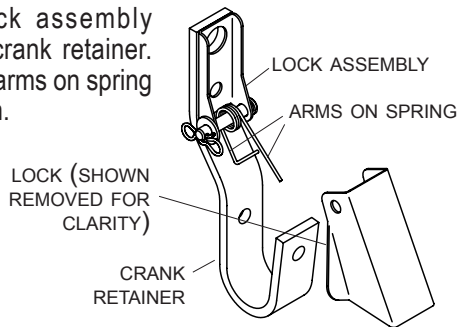
STEP 4: Reinstall offset crank retainer and locking system to box with 3/8" x 1" self-tapping screws, lock washers and nuts, fastening top screw first.



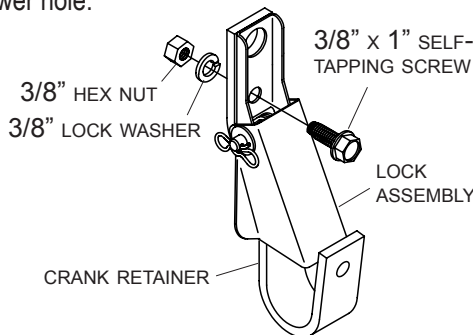


Item	Part #	Description
1.	1700434	Lock Washer - 3/8"
2.	1700407	Hex Nut - 3/8"
3.	1700400	Self-Tapping Screw - 3/8" x 1"
4.	1100033	Crank Retainer Standoff - 7"
5.	1100306	Bushing - 11/16" x 5/16"
6.	1118641	Offset J-Hook Crank Retainer
7.	1118657	Crank Retainer Base Plate
8.	1702996	Cap Screw - 1/2" x 1 1/4"
9.	1700427	Flat Washer - 1/4"
10.	1704380	Bowtie Cotter Pin - 1 3/8"
11.	1703133	Clevis Pin - 5/16" x 1 3/4"
12.	1703134	Torsion Spring
13.	1114600	Crank Retainer Lock

STEP 1: Hold lock assembly against crank retainer. Position arms on spring as shown.

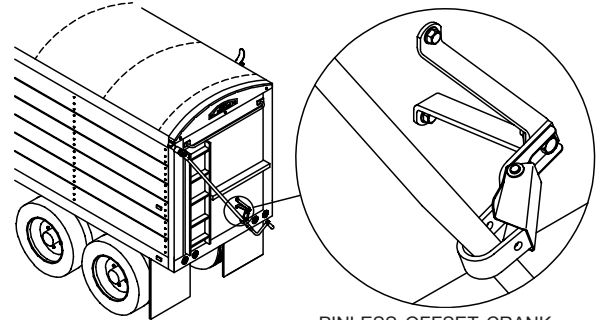


STEP 2: Fasten crank retainer to lock assembly with 3/8" x 1" self-tapping screw, lock washer and nut, fastening through lower hole.

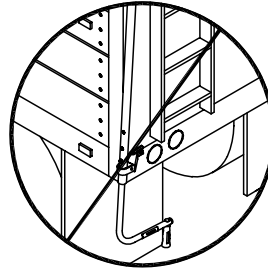


STEP 3: To determine crank retainer location on box, roll tarp closed with crank arm in closed position. Locate crank retainer where it will hold crank assembly securely in place.

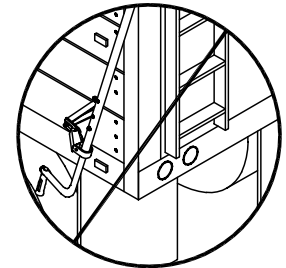
NOTE: Locate crank retainer where hook will go around 1 3/4" diameter crank extension, not around crank arm.



PINLESS OFFSET CRANK RETAINER WITH STAND-OFF



PINLESS OFFSET CRANK RETAINER WITHOUT STAND-OFF



DO NOT MOUNT PINLESS OFFSET CRANK RETAINER ON SIDE OF BOX

STEP 4: Mark hole locations on box using standoff as a guide and drill 13/32" holes. Assemble and fasten crank retainer with hardware supplied.

