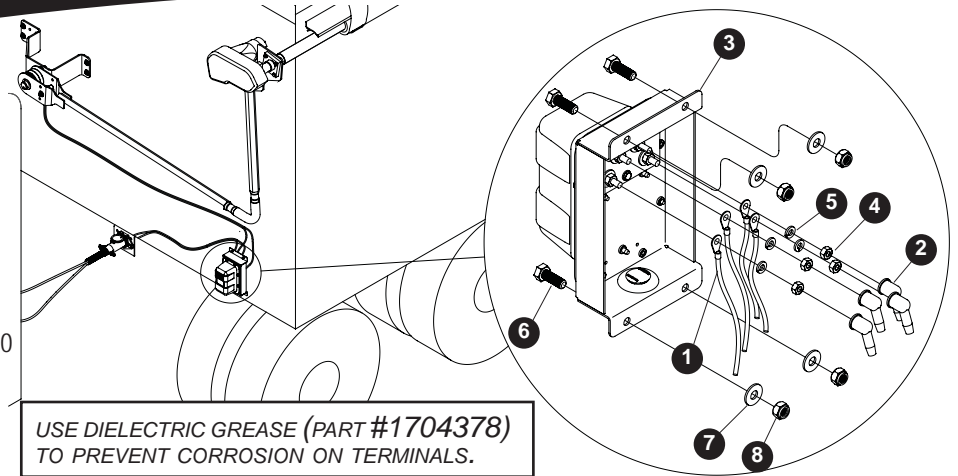
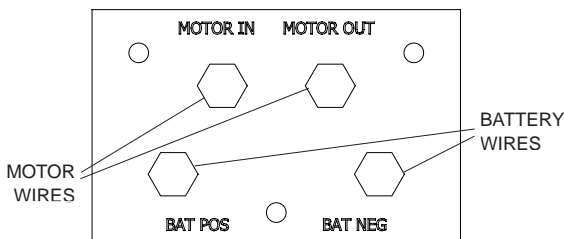
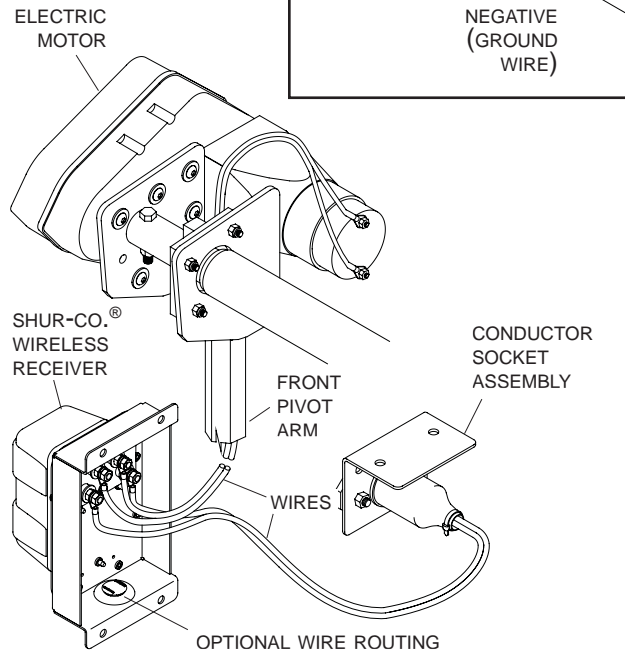
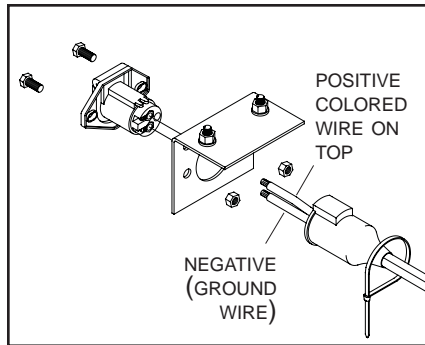


Item	Part #	Description
1.	1702707	Ring Terminal - 6 ga. 1/4" Stud
2.	1704330	Rubber Insulating Boot
3.	1118999	Shur-Co.® Receiver, Rocker 3500
4.	1700408	Hex Nut - 1/4"
5.	1700436	Lock Washer - 1/4"
6.	1702926	Cap Screw - 5/16" x 7/8"
7.	1700428	Flat Washer - 5/16"
8.	1700419	Nylon Lock Nut - 5/16"

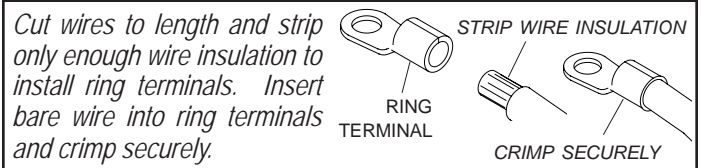


See 3500 Series Owner's Manual for complete cab wiring instructions.



STEP 1: Identify 6 ga. wire running from electric motor through front pivot arm. Route wire as desired. Insert end of this wire through rubber boots, then crimp 1/4" ring terminals onto wire ends. Remove nuts and lock washers from back of receiver. Place positive wire on upper orange post (MOTOR IN), and negative wire on upper black post (MOTOR OUT). Secure lock washers and hex nuts. Coat with dielectric grease, and install rubber boots over ring terminals.

STEP 2: Run 6 ga. wire from conductor socket to manual solenoid. Insert end of wire through rubber boots, then crimp 1/4" ring terminals onto wire ends. Place positive wire on lower orange post (BAT POS), and negative wire on lower black post (BAT NEG). Secure with lock washers and hex nuts. Coat with dielectric grease, and install rubber boots over ring terminals.



Operation

A) Open Tarp - Check motor direction by activating switch to "OPEN". If switch is running system backwards, change wire leads on motor to opposite connections.

Release switch at end of cycle or modified-reset circuit breaker will trip. After breaker resets, switch will activate motor again. To reduce unnecessary strain on tarp components, release switch at end of each cycle.

Pressure Wash - The manual solenoid may be pressure washed, but keep nozzle at least three feet from system while spraying.

