



ENGINEERED TARPING SOLUTIONS

P/N 1120858 Rev. B

INSTALLATION INSTRUCTIONS

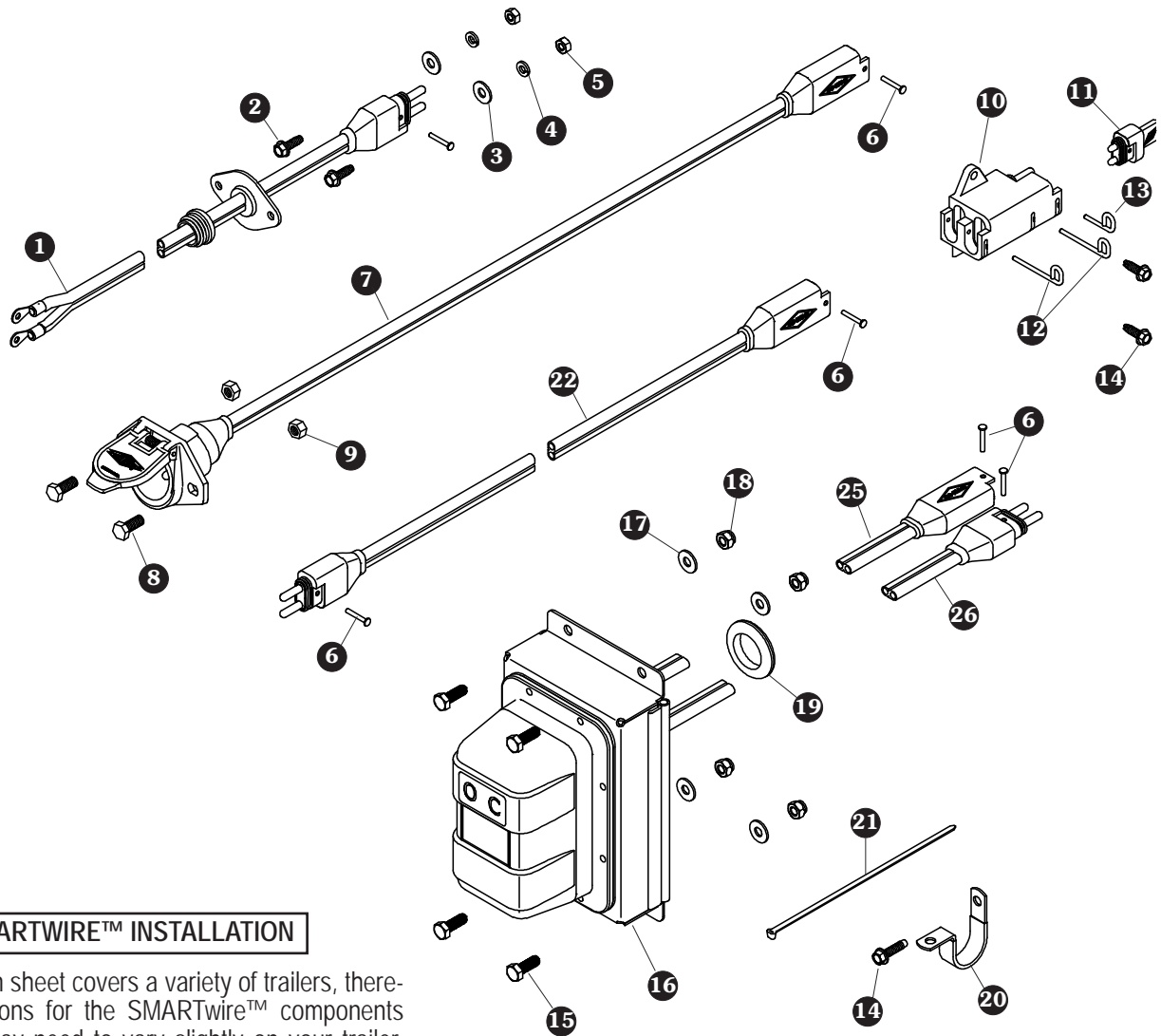


Wiring 4500 Series

READ BEFORE INSTALLING

PO BOX 713 ■ 2309 SHUR-LOK STREET ■ YANKTON, SD 57078-0713
PHONE 1-800-4-SHUR-LOK (1-800-474-8756) ■ FAX 605-665-0501
www.shurco.com

SHOP ONLINE: www.shopshurco.com



SMARTWIRE™ INSTALLATION

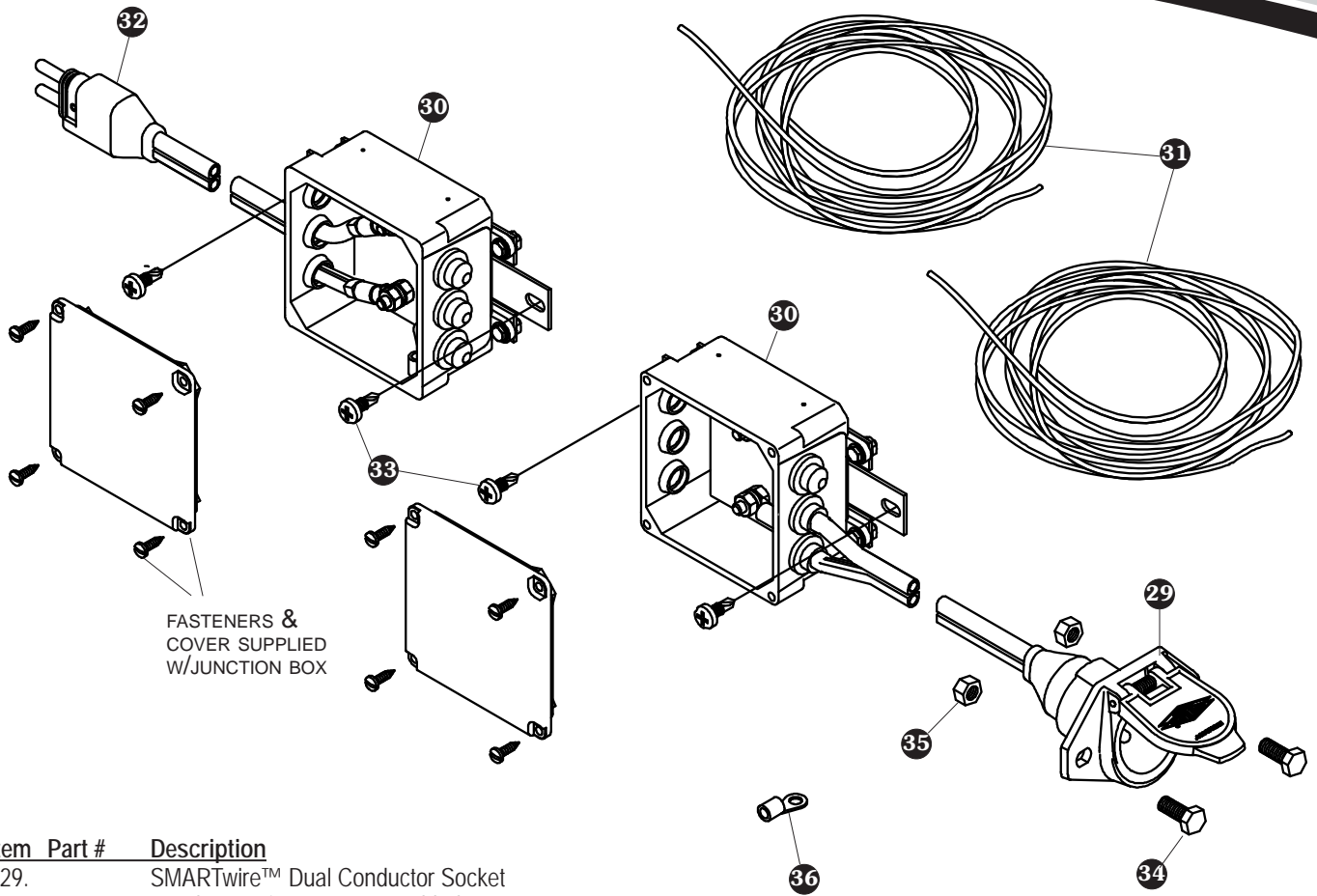
This instruction sheet covers a variety of trailers, therefore the locations for the SMARTwire™ components shown here may need to vary slightly on your trailer. Mounting locations are critical because wire lengths cannot be altered. Mounting SMARTwire™ components as close as possible to the locations shown will not only ensure a quick and easy installation, but will also facilitate SMARTwire™ upgrades.

Item Part # Description

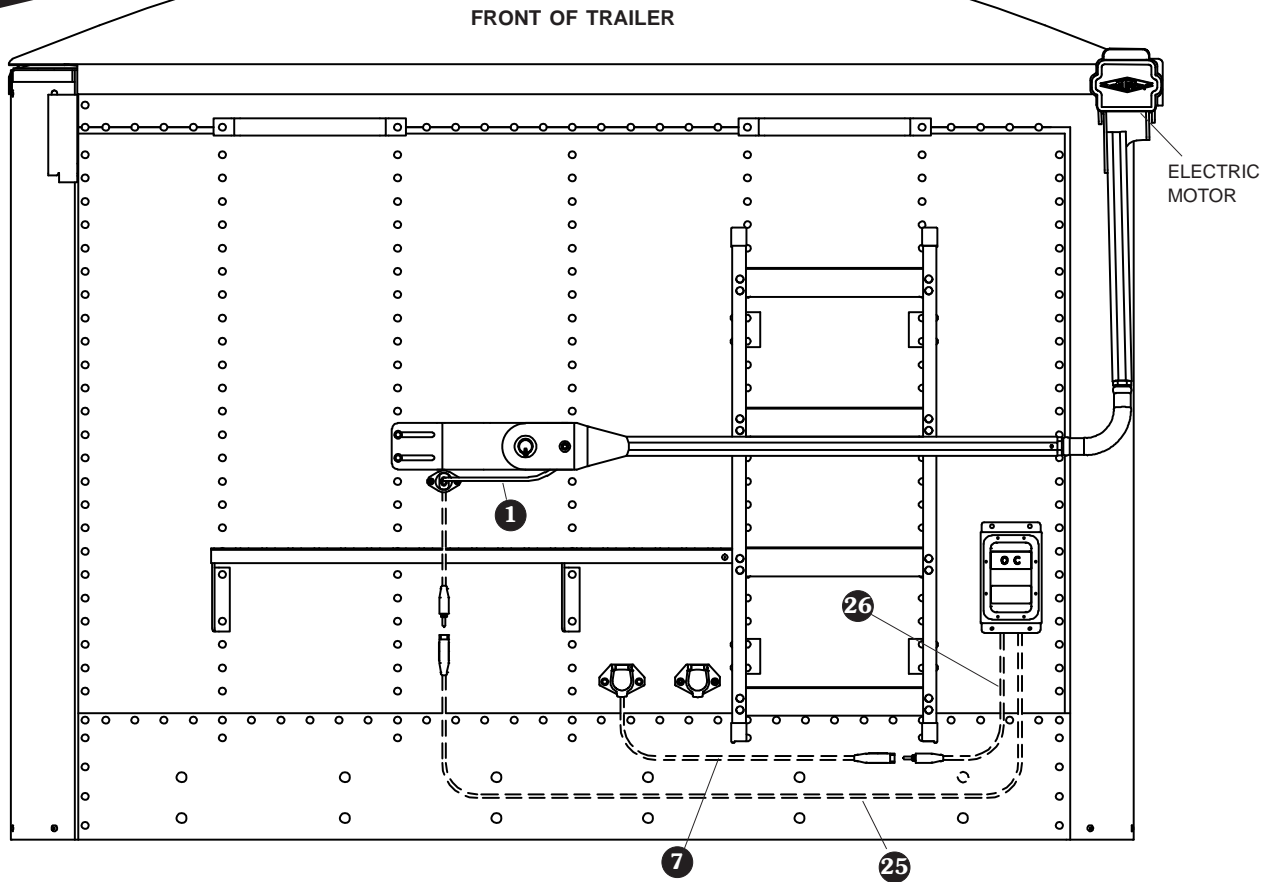
- 1. SMARTwire™ - 6 Ga. - Plug - 9' 9"
- 2. 1700403 Self-Tapping Screw - 1/4" x 3/4"
- 3. 1700427 Flat Washer - 1/4"
- 4. 1700436 Lock Washer - 1/4"
- 5. 1700408 Hex Nut - 1/4"
- 6. 1704751 Harness Lock Pin - 1/4" x 7/8"
- 7. 1120670 SMARTwire™ Dual Conductor Socket
- 8. 1701045 Cap Screw - 5/16" x 3/4"
- 9. 1700411 Hex Nut - 5/16"
- 10. 1704695 Harness Junction Block
- 11. 1704717 Wire Harness Rubber Plug
- 12. 1704696 Harness Lock Pin - Long

Item Part # Description

- 13. 1704711 Harness Lock Pin - Short
- 14. 1704338 Self-Tapping Screw - 1/4" x 1"
- 15. 1702926 Cap Screw - 5/16" x 7/8"
- 16. Shur-Co® Wireless Receiver - SMARTWire™
- 17. 1201237 Flat Washer - 5/16"
- 18. 1700419 Lock Nut - 5/16"
- 19. 1202938 Rubber Grommet - 1 1/2" Insert
- 20. 1702108 Wire Clip - 3/4"
- 21. 1703231 Cable Tie - 8"
- 22. SMARTwire™ - 6 Ga. x 25' - Plug/Socket
- 25. SMARTwire™ - 6 Ga. x 6' 3" - Socket
- 26. SMARTwire™ - 6 Ga. x 2' 4" - Plug



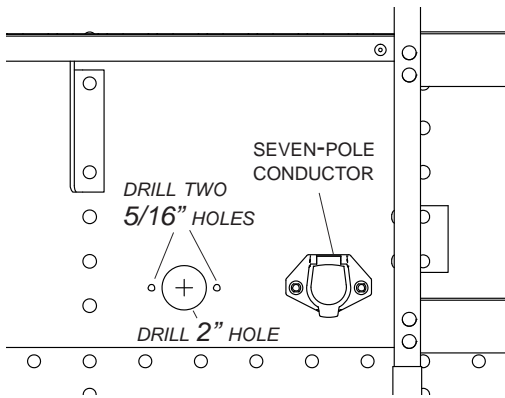
| Item | Part # | Description |
|------|---------|--|
| 29. | | SMARTwire™ Dual Conductor Socket |
| 30. | 1119520 | 6-Hole Junction Box - Assembled |
| 31. | | Dual Conductor Wire - 6 Ga. |
| 32. | | SMARTwire™ - 6 Ga. - Plug/Ring Terminals |
| 33. | 1700398 | Self-Drilling Screw - 1/4" x 3/4" |
| 34. | 1701045 | Cap Screw - 5/16" x 3/4" |
| 35. | 1700411 | Hex Nut - 5/16" |
| 36. | 1702707 | Ring Terminal - 6 Ga. x 1/4" Stud |



NOTE: Wire lengths are predetermined. Before installing SMARTwire™ components, review and confirm wire routing so that wires will reach components with ample room for connection.

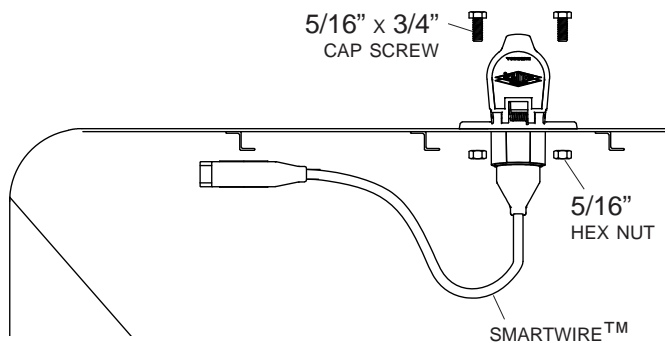
DUAL-POLE CONDUCTOR SOCKET INSTALLATION

STEP 1: Locate dual-pole conductor socket near seven-pole conductor socket as shown. Determine location and drill 2" hole through trailer skin.



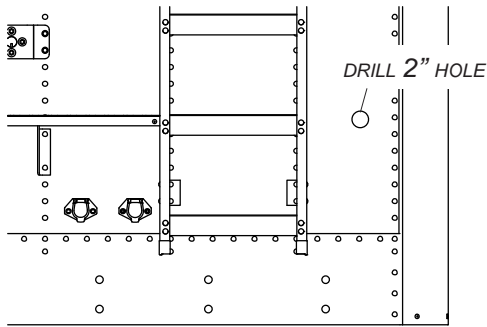
STEP 2: Align socket over 2" hole. Using holes in flanges on socket as a guide, mark and drill two 5/16" holes.

STEP 3: Fasten conductor socket to trailer with 5/16" x 3/4" cap screws and nuts.

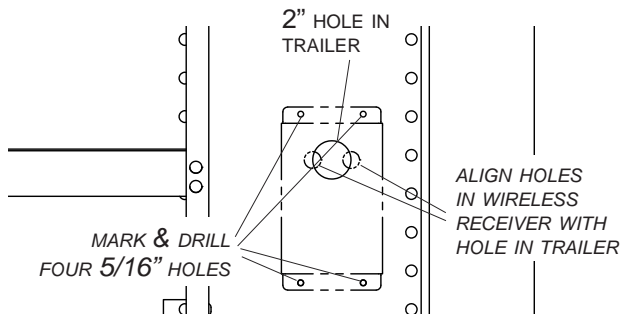


SHUR-CO® WIRELESS RECEIVER INSTALLATION

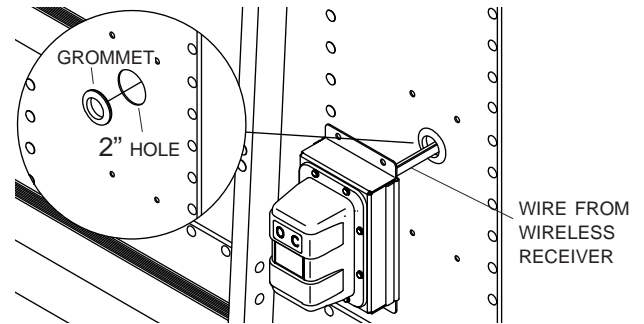
STEP 1: Locate Shur-Co® wireless receiver as shown on page 2. Determine location and drill 2" hole through trailer skin.



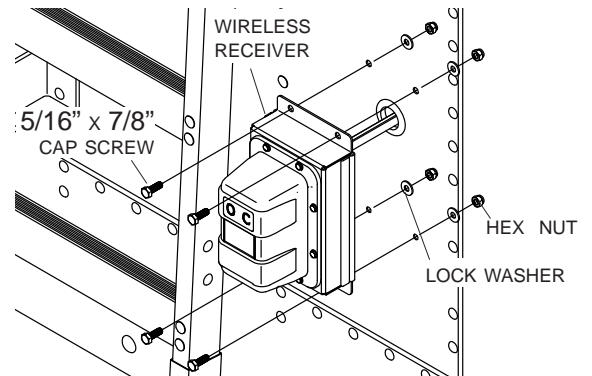
STEP 2: Align holes in wireless receiver over 2" hole in trailer as shown below. Using holes on flanges on receiver as a guide, mark and drill four 5/16" holes as shown.



STEP 3: Install grommet into 2" hole. Insert wire from wireless receiver through grommet.

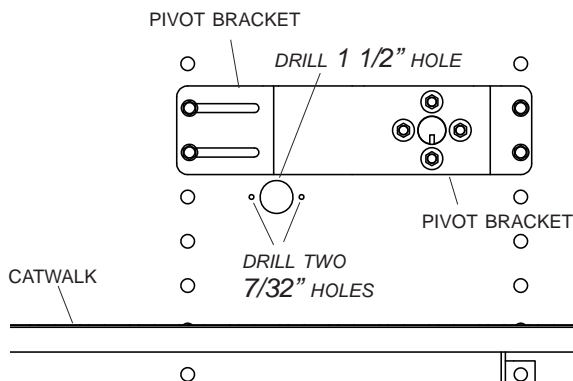


STEP 4: Align holes on wireless receiver with holes on trailer. Fasten receiver to trailer with 5/16" x 7/8" cap screws, lock washers and nuts.



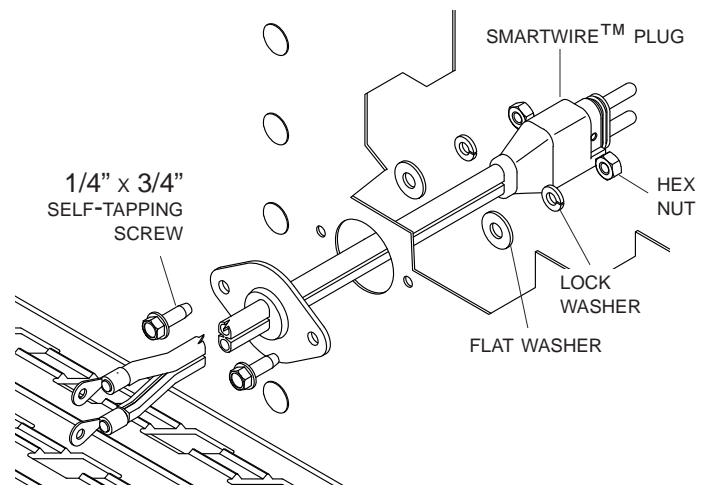
ADAPTER PLUG INSTALLATION

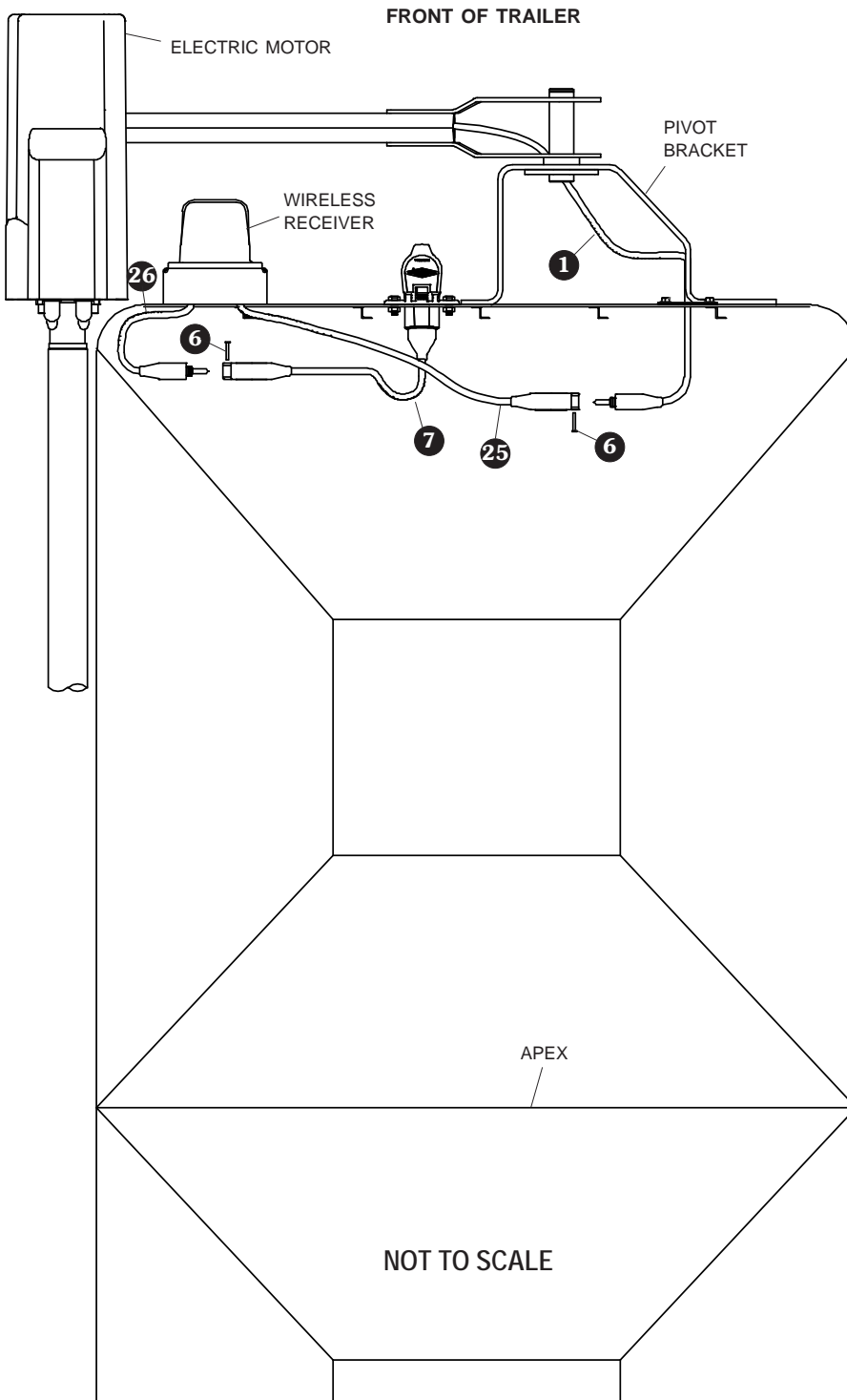
STEP 1: Measure 11" horizontally from center line of trailer and 1" down from lower edge of pivot bracket. Mark and drill 1 1/2" hole through trailer skin.



STEP 2: Align adapter plug with 1 1/2" hole. Using plug as a guide, mark and drill two 7/32" holes as shown.

STEP 3: Fasten adapter plug to front of trailer with 1/4" x 3/4" cap screws, lock washers and nuts.





NOTE: Coat each connection with dielectric grease (P/N1704378) to prevent corrosion.

CAUTION
Do not fasten SMARTwire™ components to trailer through hopper walls.

- FRONT OF TRAILER
- STEP 1:** Route SMARTwire™ 25 from wireless receiver to adapter plug 1. Connect wire to adapter plug and secure with lock pin 6.
- STEP 2:** Connect SMARTwire™ 26 from wireless receiver into SMARTwire™ 7 and secure connection with lock pin 6.
- STEP 3:** Secure all wires to trailer with cable clips 20 and screws 14. If needed, use cable ties 21.

NOTE: For lead/pup trailer configurations, continue on next page.

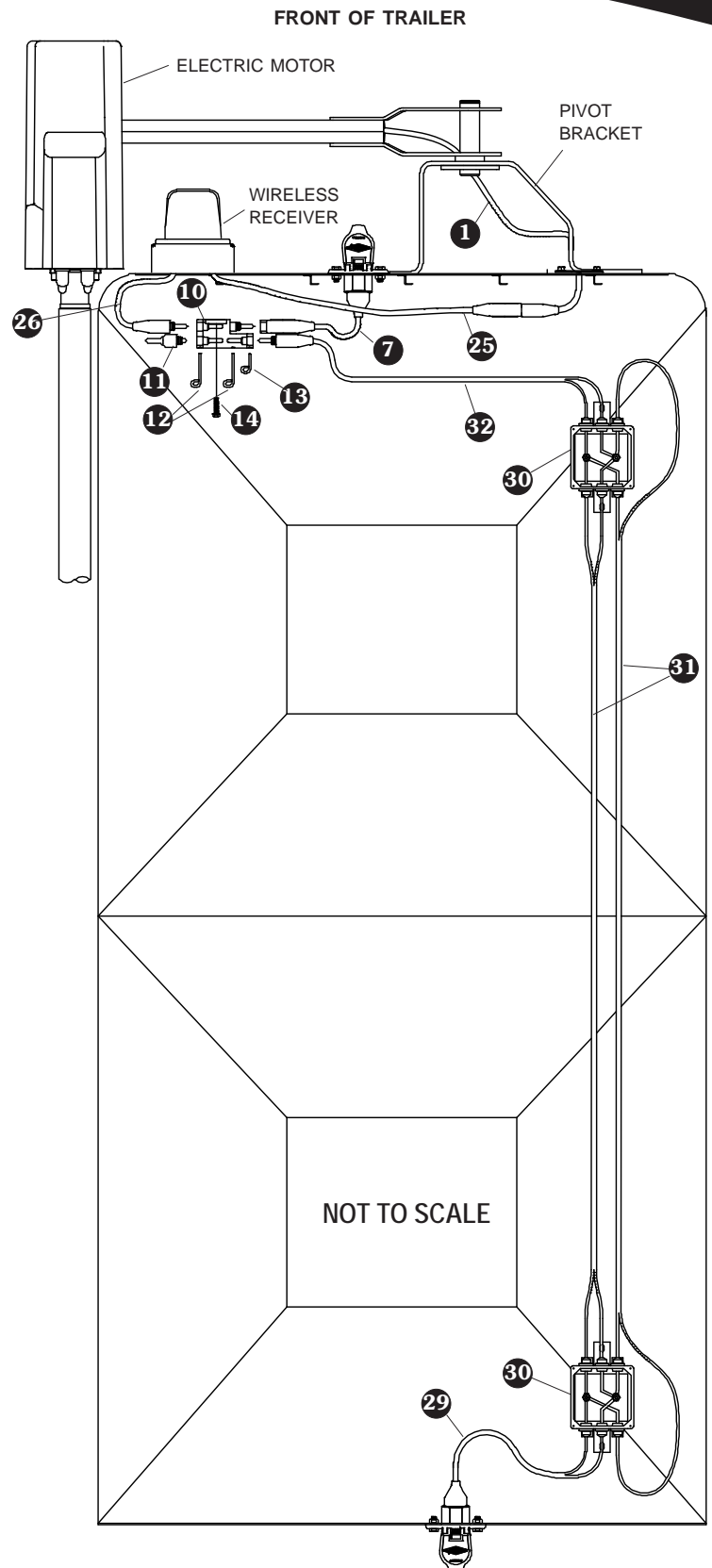
FRONT OF TRAILER

- STEP 4:** Remove lock pin **6** from SMARTwire™ **7** and disconnect wires.
- STEP 5:** To determine location of junction block **10**, route SMARTwires **7** and **26** to a location where wires will reach. Mount junction block **10** at this location. Using holes in junction block as a guide, mark and drill two 7/32" holes.
- STEP 6:** Fasten junction block **10** to trailer with screws **14**.
- STEP 7:** Connect SMARTwires **7**, **26** and **32** to junction block **10**. Insert plug **11** into remaining socket. Secure connections with lock pins **12** and **13**.
- STEP 8:** Mount junction box **30** on front of trailer where SMARTwire™ **32** will reach. Using slots in junction box assembly as a guide, mark and drill 3/16" holes and fasten with screws **33**.

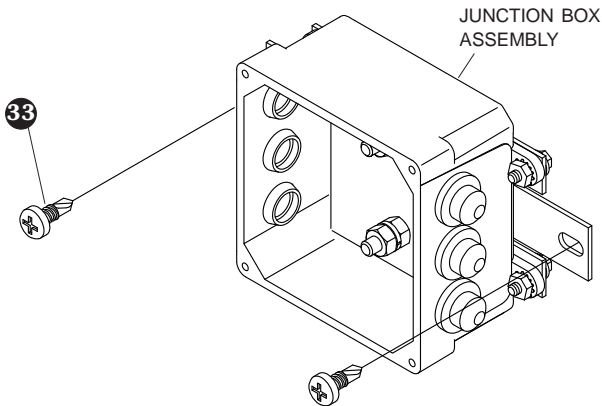
REAR OF TRAILER

- STEP 9:** To determine location of conductor socket on rear of trailer, route SMARTwire™ **29** from junction box **30** to location where wire will reach. Mount conductor socket at this location as shown in steps 5 and 6.
- STEP 10:** Mount junction box **30** on rear of trailer where SMARTwire™ **29** will reach. Using slots in junction box assembly as a guide, mark and drill 3/16" holes and fasten with screws **33**. Align junction box so that weep holes are facing downward.
- STEP 11:** Run 6 ga. wires from front junction box to rear junction box. Crimp 1/4" ring terminals to wire ends. Remove nuts and lock washers from junction posts. Place positive wires on positive post and negative wires on negative post. Secure with hex nuts and lock washers.
- STEP 14:** Secure all wires to trailer with cable clips **20** and screws **14**. If needed use cable ties **21**.

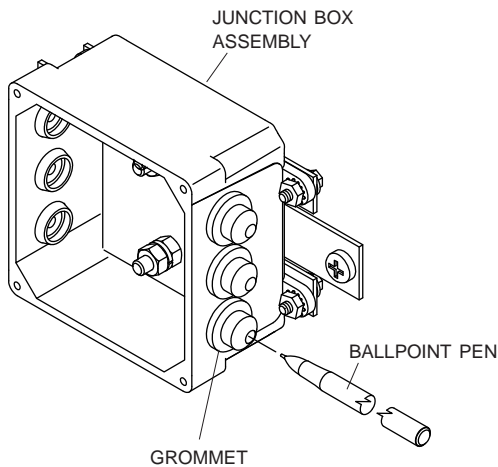
NOTE: Junction box wiring instructions are on the next page.



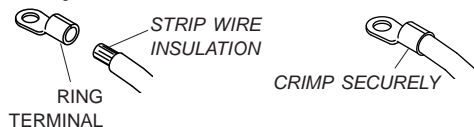
STEP 6: Using slots in junction box assembly as a guide, mark and drill 3/16" holes and fasten to trailer with screws **33**.



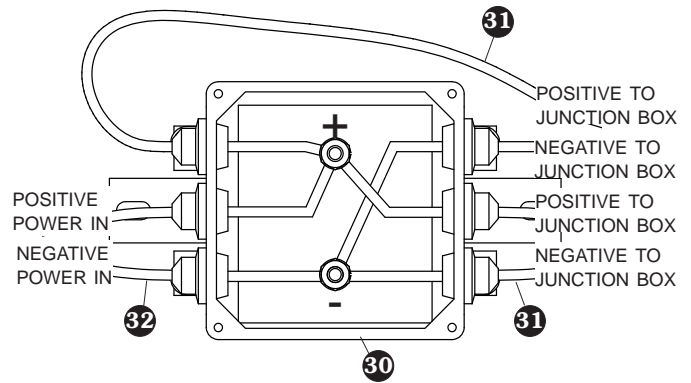
STEP 7: Pierce grommets with ballpoint pen so that terminal wires can be inserted through pierced holes.



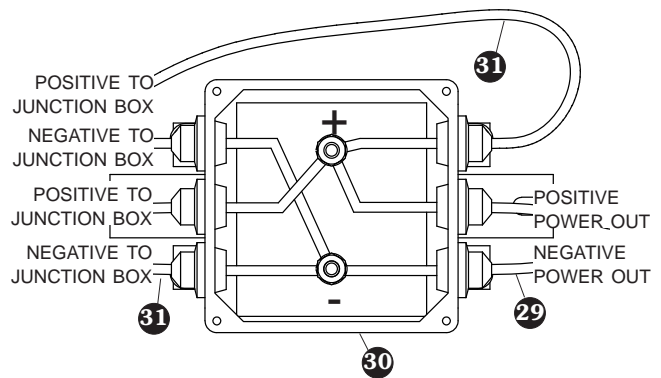
Cut wires to length and strip only enough wire insulation to install ring terminals. Insert bare wire into ring terminals and crimp securely.



STEP 8: Fasten wires **31** and **32** to junction box **30**. Crimp 1/4" ring terminals to wire ends. Remove nuts and lock washers from junction posts. Place positive wires on positive post and negative wires on negative post. Replace nuts and lock washers onto junction posts and tighten to secure.



STEP 9: Fasten wires **29** and **31** to junction box **30**. Crimp 1/4" ring terminals to wire ends. Remove nuts and lock washers from junction posts. Place positive wires on positive post and negative wires on negative post. Replace nuts and lock washers onto junction posts and tighten to secure.



STEP 10: Fasten cover to junction box with supplied screws.

