



ENGINEERED TARPING SOLUTIONS

P/N 1120932 Rev. B

# INSTALLATION INSTRUCTIONS

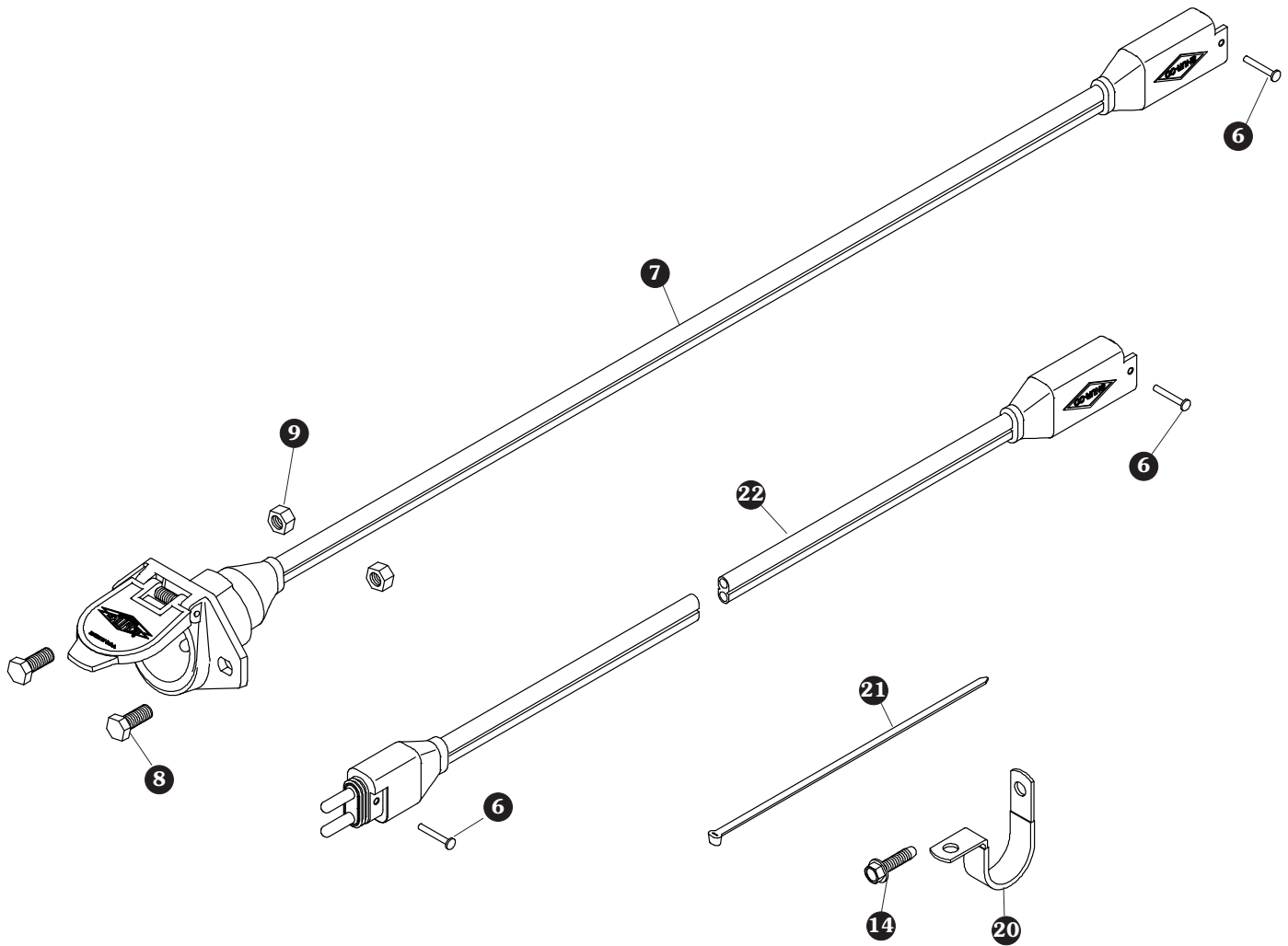


Wiring One ProTrap<sup>®</sup>

*READ BEFORE INSTALLING*

PO BOX 713 ■ 2309 SHUR-LOK STREET ■ YANKTON, SD 57078-0713  
PHONE 1-800-4-SHUR-LOK (1-800-474-8756) ■ FAX 605-665-0501  
[www.shurco.com](http://www.shurco.com)

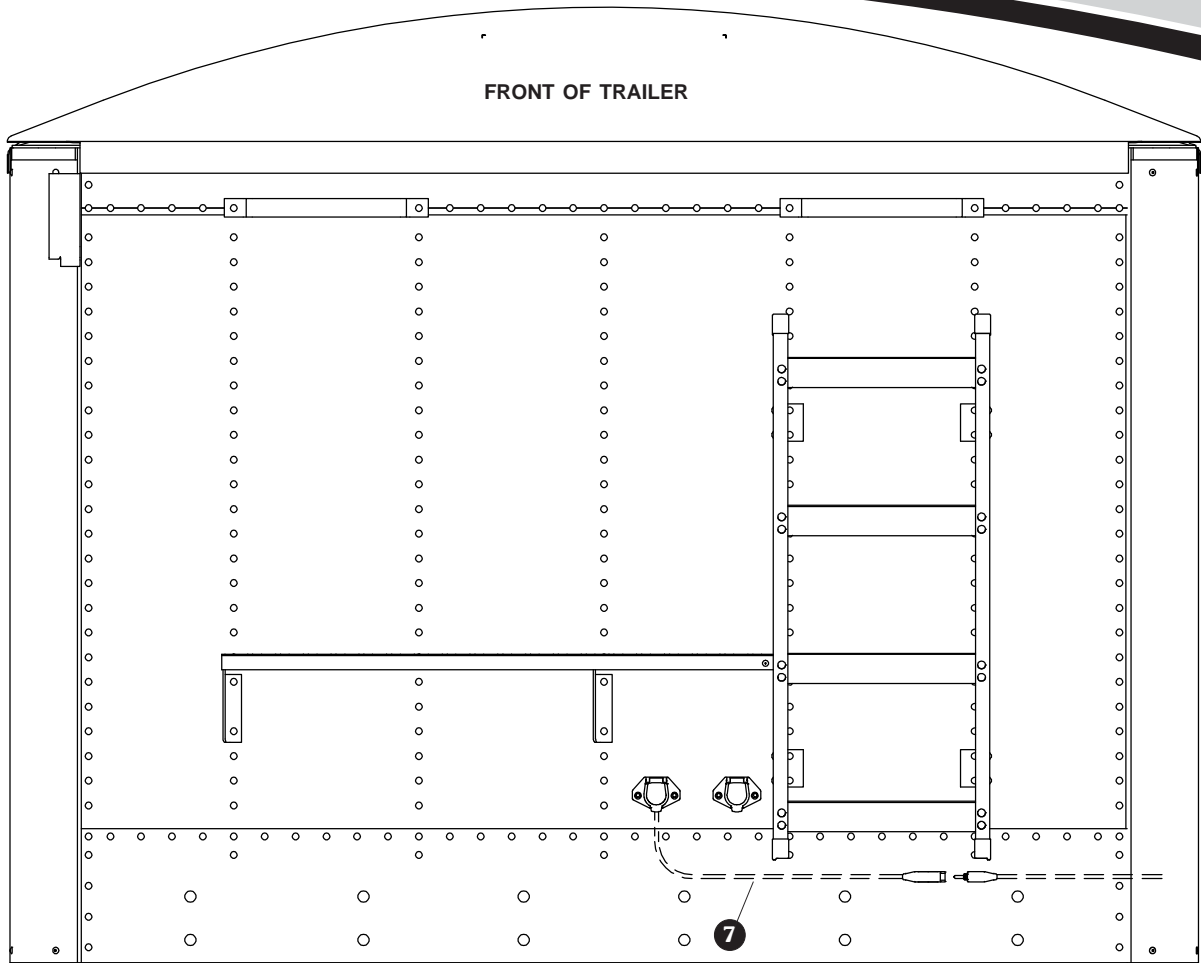
SHOP ONLINE: [www.shopshurco.com](http://www.shopshurco.com)



**SMARTWIRE™ INSTALLATION**

This instruction sheet is supplied with a variety of trailer models, therefore the locations for the SMARTwire™ components shown here may need to vary slightly on your trailer. Mounting locations are critical because wire lengths cannot be altered. Mount SMARTwire™ components as close as possible to the locations shown, not only to ensure a quick and easy installation, but also to facilitate SMARTwire™ upgrades.

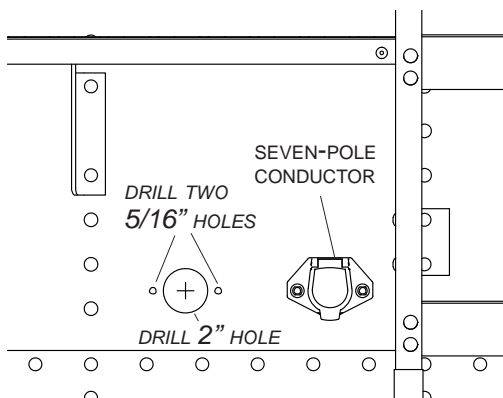
Item	Part #	Description
6.	1704751	Harness Lock Pin - 1/4" x 7/8"
7.	1120670	SMARTwire™ Dual Conductor Socket
8.	1701045	Cap Screw - 5/16" x 3/4"
9.	1700411	Hex Nut - 5/16"
14.	1704338	Self-Tapping Screw - 1/4" x 1"
20.	1702108	Wire Clip - 3/4"
21.	1703231	Cable Tie - 8"
22.		SMARTwire™ - 6 Ga. x 25' - Plug/Socket



**NOTE:** Wire lengths are predetermined. Before installing SMARTwire™ components, review and confirm wire routing so that wires will reach components with ample room for connection.

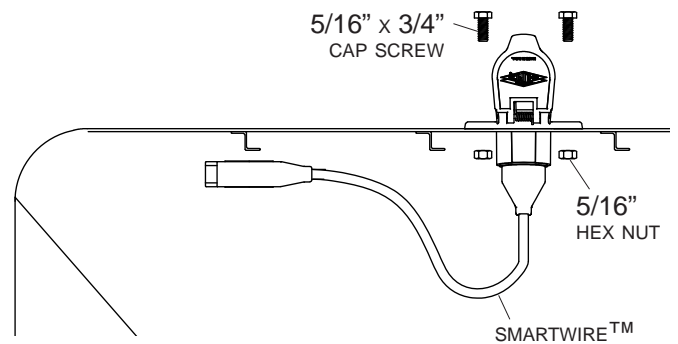
**DUAL-POLE CONDUCTOR SOCKET INSTALLATION**

**STEP 1:** Locate dual-pole conductor socket near seven-pole conductor socket as shown. Determine location and drill 2" hole through trailer skin.

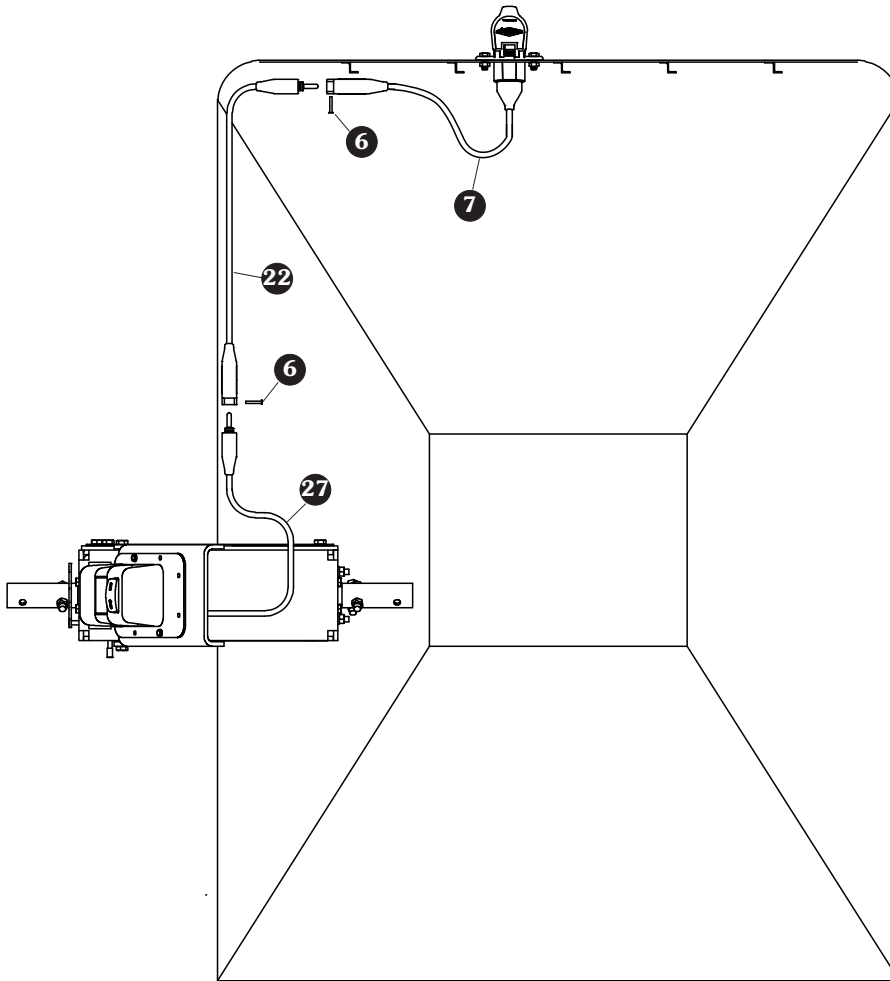


**STEP 2:** Align socket over 2" hole. Using holes in flanges on socket as a guide, mark and drill two 5/16" holes.

**STEP 3:** Fasten conductor socket to trailer with 5/16" x 3/4" cap screws and nuts.



FRONT OF TRAILER



NOT TO SCALE

**NOTE:** Coat each connection with dielectric grease (P/N 1704378) to prevent corrosion.

**CAUTION**

Do not fasten SMARTwire™ components to trailer through hopper walls.

**FRONT OF TRAILER**

STEP 1: Route SMARTwire™ 7 along existing wiring on trailer.

STEP 2: Plug SMARTwire™ 22 into SMARTwire™ 7 and secure connection with lock pin 6. Route smart wire 22 to apex on trailer.

**APEX OF TRAILER**

STEP 3: Connect SMARTwires 22 and 27. Secure with lock pin 6.

STEP 4: Secure all wires to trailer with cable clips 20 and screws 14. If needed, use cable ties 21.