



ENGINEERED TARPING SOLUTIONS

P/N 1121004 Rev. A

INSTALLATION INSTRUCTIONS

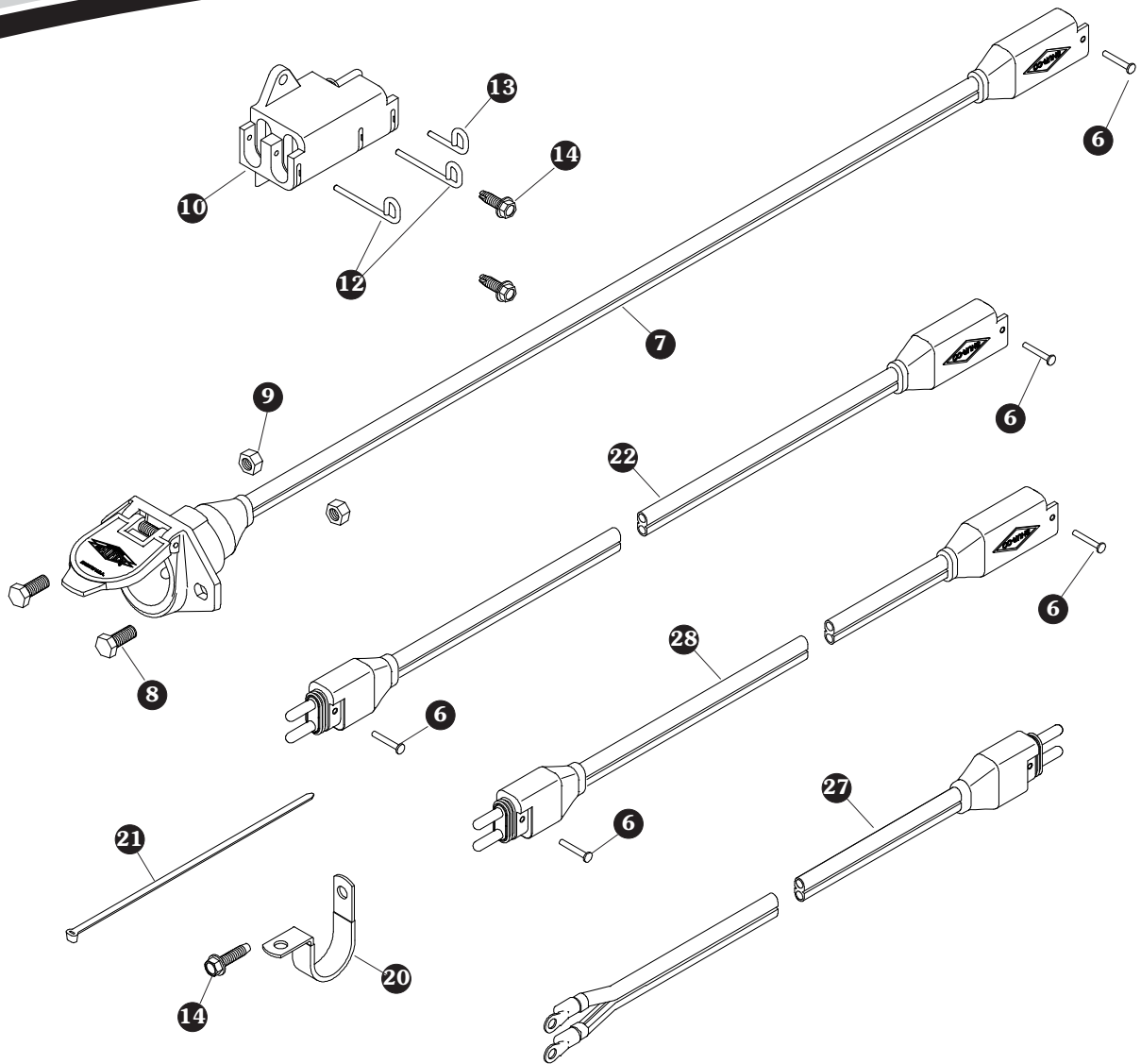


Wiring Three ProTraps

READ BEFORE INSTALLING

PO BOX 713 ■ 2309 SHUR-LOK STREET ■ YANKTON, SD 57078-0713
PHONE 1-800-4-SHUR-LOK (1-800-474-8756) ■ FAX 605-665-0501
www.shurco.com

SHOP ONLINE: www.shopshurco.com

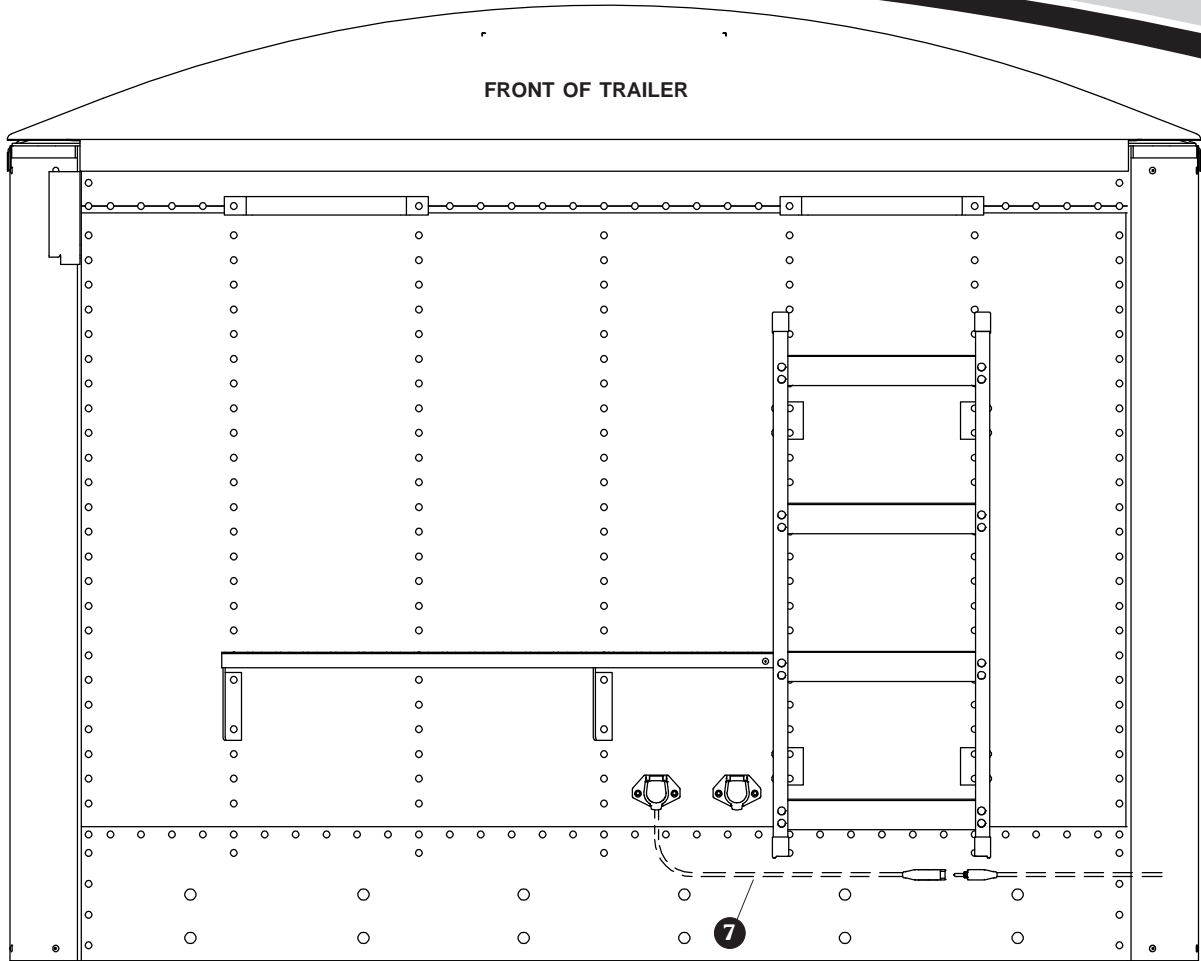


SMARTWIRE™ INSTALLATION

This instruction sheet is supplied with a variety of trailer models, therefore the locations for the SMARTwire™ components shown here may need to vary slightly on your trailer. Mounting locations are critical because wire lengths cannot be altered. Mount SMARTwire™ components as close as possible to the locations shown, not only to ensure a quick and easy installation, but also to facilitate SMARTwire™ upgrades.

Item	Part #	Description
6.	1704751	Harness Lock Pin - 1/4" x 7/8"
7.	1120670	SMARTwire™ Dual Conductor Socket
8.	1701045	Cap Screw - 5/16" x 3/4"
9.	1700411	Hex Nut - 5/16"
10.	1704695	Harness Junction Block - Black Rubber
12.	1704696	Harness Lock Pin - Long
13.	1704711	Harness Lock Pin - Short

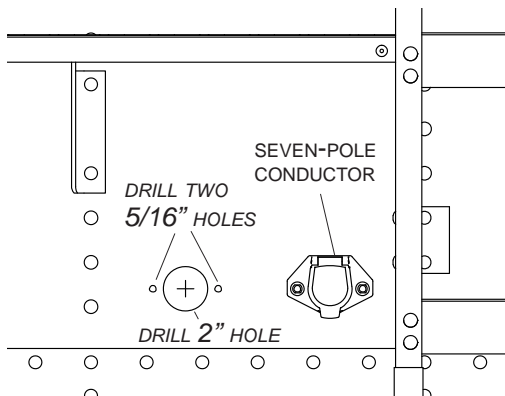
Item	Part #	Description
14.	1704338	Self-Tapping Screw - 1/4" x 1"
20.	1702108	Wire Clip - 3/4"
21.	1703231	Cable Tie - 8"
22.		SMARTwire™ - 6 Ga. x 25' - Plug/Socket
27.		SMARTwire™ - 6 Ga. x 10' - Plug/Ring Terminals
28.		SMARTwire™ - 6 Ga. x 16' - Plug/Socket



NOTE: Wire lengths are predetermined. Before installing SMARTwire™ components, review and confirm wire routing so that wires will reach components with ample room for connection.

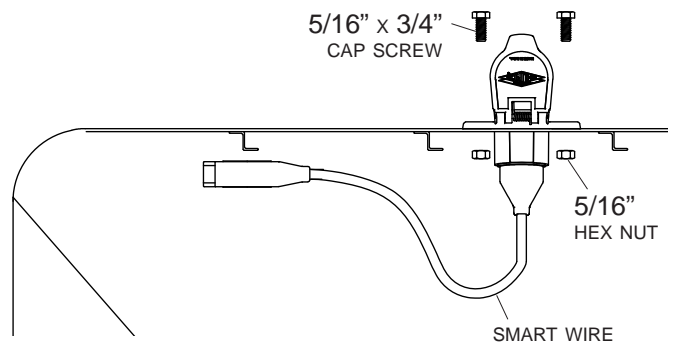
DUAL-POLE CONDUCTOR SOCKET INSTALLATION

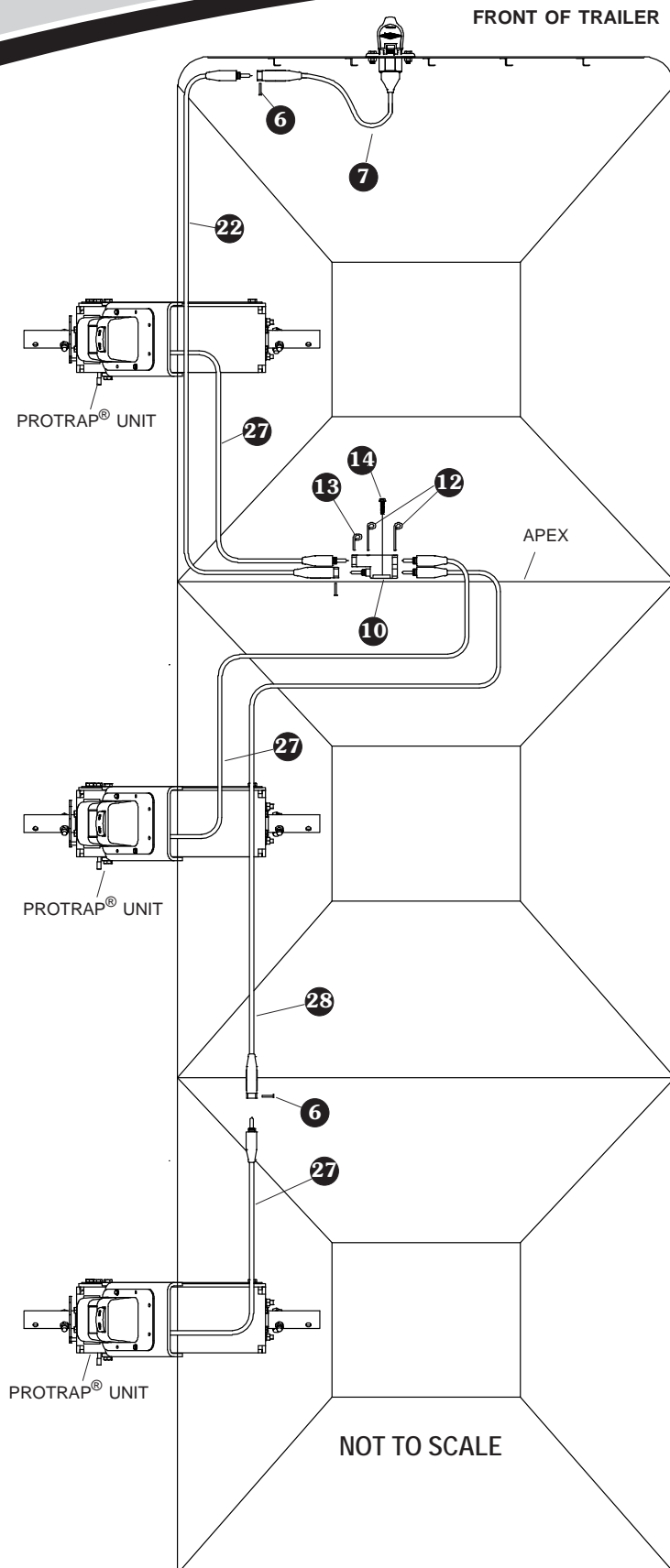
STEP 1: Locate dual-pole conductor socket near seven-pole conductor socket as shown. Determine location and drill 2" hole through trailer skin.



STEP 2: Align socket over 2" hole. Using holes in flanges on socket as a guide, mark and drill two 5/16" holes.

STEP 3: Fasten conductor socket to trailer with 5/16" x 3/4" cap screws and nuts.





NOTE: Coat each connection with dielectric grease (P/N 1704378) to prevent corrosion.

CAUTION
Do not fasten SMARTwire™ components to trailer through hopper walls.

FRONT OF TRAILER

- STEP 1: Route SMARTwire™ 7 along existing wiring on trailer.
- STEP 2: Plug SMARTwire™ 22 into SMARTwire™ 7 and secure connection with lock pin 6. Route SMARTwire™ 22 to apex on trailer.

APEX OF TRAILER

- STEP 3: To determine junction block location, route SMARTwires 22 and 27 from front two ProTrap® units to location on apex where wires will reach. Position junction block 10 at this location. Using holes in junction block as a guide, mark and drill two 7/32" holes.
- STEP 4: Fasten junction block 10 to trailer with screws 14.
- STEP 5: Connect SMARTwires 22, 27, and 28 to junction block 10.
- STEP 6: Secure SMARTwires to junction block with lock pins 12 and 13.
- STEP 7: Route SMARTwire™ 29 toward rear of trailer and connect to SMARTwire™ 27 for rear ProTrap®. Secure with lock pin 6.
- STEP 8: Secure all wires to trailer with cable clips 20 and screws 14. If needed, use cable ties 21.

MORE QUALITY PRODUCTS FROM SHUR-CO®

- **Genuine Replacement Tarps**
- **Genuine Replacement Parts**

- **Agriculture Products**
 - Value Series Shur-Lok
 - Super Duty Shur-Lok
 - Shur-Lok® Junior
 - Premium Belt 'n Ratchet
 - Cable-Lok™
 - Turning Point™ Bow System

- **SMARTrailer™ Accessories for Agriculture Products**
 - SMARTransmitter®
 - Shur-Link Pro™
 - 4500 Series Electric
 - ProTrap® Hopper Opener
 - LiteALL™ Work Lights
 - Cable-Lok™ Electric Upgrade
 - Electric Turning Point™ Bow System
 - Value Series Electric
 - Solar Power Pack

- **Flatbed Products**
 - Lumber Tarps
 - Steel Tarps
 - Coil Tarps
 - Cargo Control

- **Construction Products**
 - Super Duty Shur-Lok®
 - Premium Belt 'n Ratchet
 - Shur-Trak II™
 - Cover-Pro II®
 - UltraSteel Econo-Pull
 - UltraSteel Arm - Basic
 - UltraSteel Arm - Premium
 - Arm-Matic™
 - Turning Point™ Bow System
 - IronSide™ Side Arm System

- **SMARTrailer™ Accessories for Construction Products**
 - SMARTransmitter®
 - 4500 Series Electric w/Gate Flex™
 - Shur-Trak II™ Electric Upgrade
 - Cover-Pro II® Electric Upgrade
 - Electric Turning Point™ Bow System
 - Solar Power Pack

- **Custom Products**
 - Fitted Truck Covers
 - Flat Utility Tarps
 - Bean Drill Covers
 - Hopper Extension Covers
 - Auger Boots

ENGINEERED TARPING SOLUTIONS

