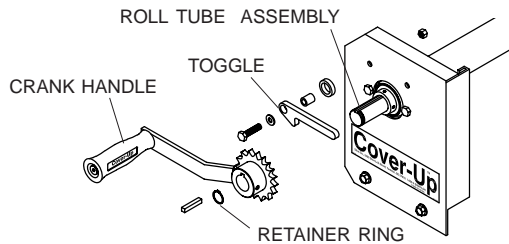


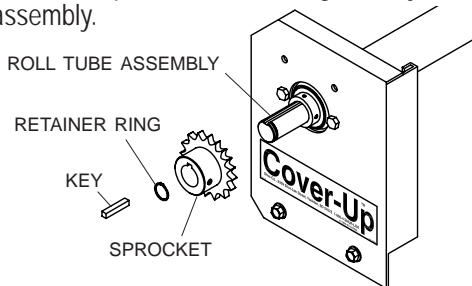
**NOTE:** To prevent rust, paint all exposed metal, such as weld seams and/or metal exposed by grinding or cutting, with corrosion-resistant paint.

Item	Part #	Description
1	1701199	Shoulder Bolt - 3/8" x 4"
2	1701353	Plastic Handle
3	1105239	Crank Weldment
4	1700411	Hex Nut - 5/16"
5	1700419	Nylon Lock Nut - 5/16"
6	1700427	Flat Washer - 1/4"
7	1701194	Toggle
8	1701196	Sleeve Bearing - 5/16"
9	1701197	Sleeve Bearing - 1/2"
10	1111749	Crank Relocator Bracket
11	1701208	Cap Screw - 5/16" x 1 1/4"
12	1701220	Crank Relocator Shaft - 1" x 3 5/8"
13	1701045	Cap Screw - 5/16" x 3/4"
14	1106708	Chain Guard
15	1701060	External Retaining Ring - 1"
16	1106619	Sprocket - 18 Tooth
17	1105237	Driver Side Roll Tube Support
18	1700433	Lock Washer - 5/16"
19	1109179	Roller Chain/Link
20	1111670	Relocator Brace
21	1701543	Nylon Lock Nut - 1/4"
22	1701056	Square Key - 1/4" x 1 3/8"
23	1700381	Cap Screw - 1/4" x 1"
24	1700400	Self-Tapping Screw - 3/8" x 1"
25	1702733	Flat Washer - 2"

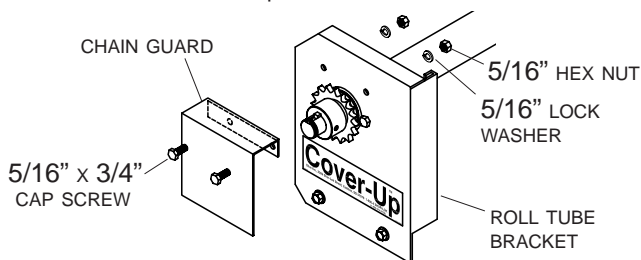
**STEP 1:** Remove retainer ring, crank handle and toggle assembly from roll tube assembly.



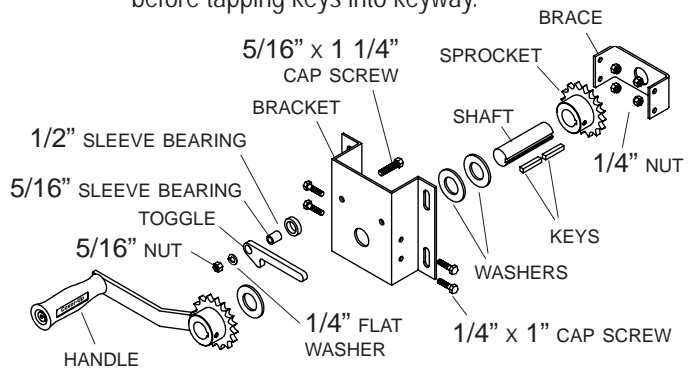
**STEP 2:** Assemble sprocket, retainer ring and key on to roll tube assembly.



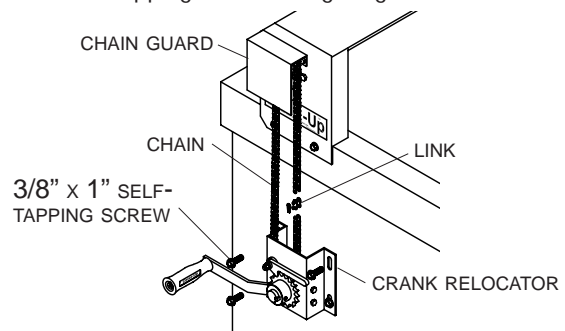
**STEP 3:** Fasten chain guard to roll tube support bracket with 5/16" x 3/4" cap screws, washers and nuts.



**STEP 4:** Assemble crank relocator. Insert shaft into sprocket before tapping keys into keyway.



**STEP 5:** Position crank relocator on box and fasten with 3/8" self-tapping screws. Finger tighten.



**STEP 6:** Install chain and link. Adjust chain tension to achieve 1" slack. Tighten 3/8" self-tapping screws securely.

**NOTE:** Use all four screws supplied.

