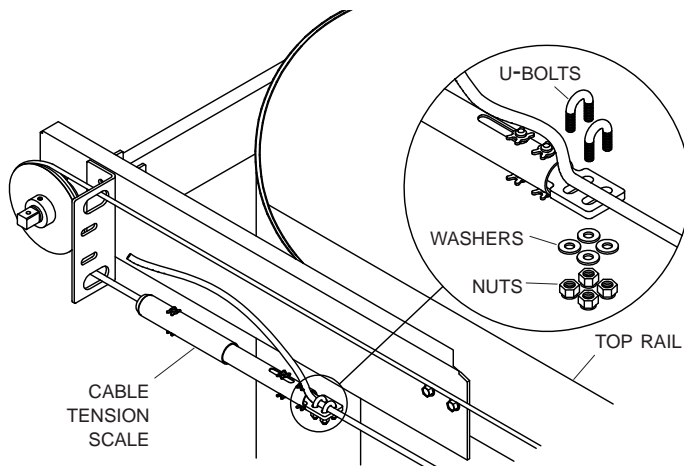


**STEP 1:** Wrap 1/4" cable around front and rear pulleys. Install U-bolts over cable and into scale. Pull cable tight and secure with washers and nuts.

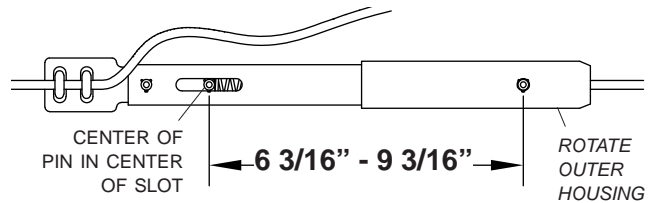
**DRIVER SIDE**



**NOTE:** Cable tension scales must face same direction on both driver and passenger side. Cable tension scale must be placed on lower cable.

**STEP 2:** Rotate outer housing until center of pin is in center of slot.

**NOTE:** When adjusting tension, make sure cable is not spinning.



**NOTE:** If this dimension is under 6 5/8" on initial stretch, consider restretching cable to allow for more adjustment as cable stretches.

**TO HELP PREVENT CABLE FROM SPINNING** adjust tension scale while tension scale is at front of trailer.

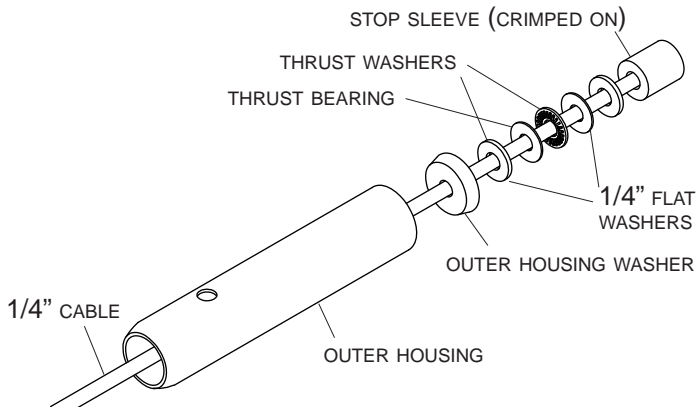
**ADJUST CABLE TENSION** by pulling cable through cable clamps and tightening clamps. Center section of cable may need support at this time.

**CHECK CABLE TENSION** daily for first two weeks after installation. Cables will stretch considerably during this time.

**KEEP CABLES TIGHT** at all times. Incorrect cable tension may cause bow misalignment and incorrectly hooked wind guards.

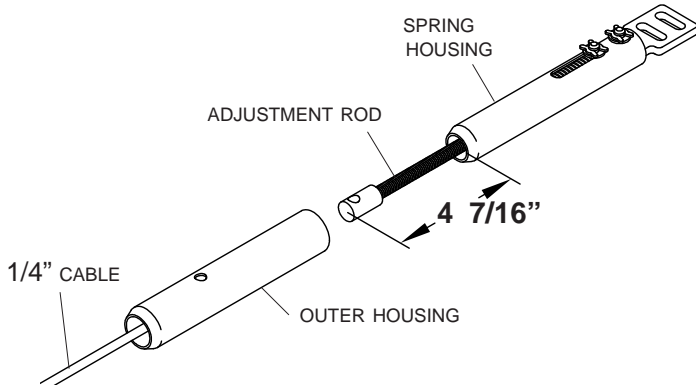
**DO NOT CUT CABLES** until tarp and cable installation are complete and cable tension has been correctly adjusted.

**STEP 3:** Slide cable through washers, thrust bearing, outer housing washer and outer housing.

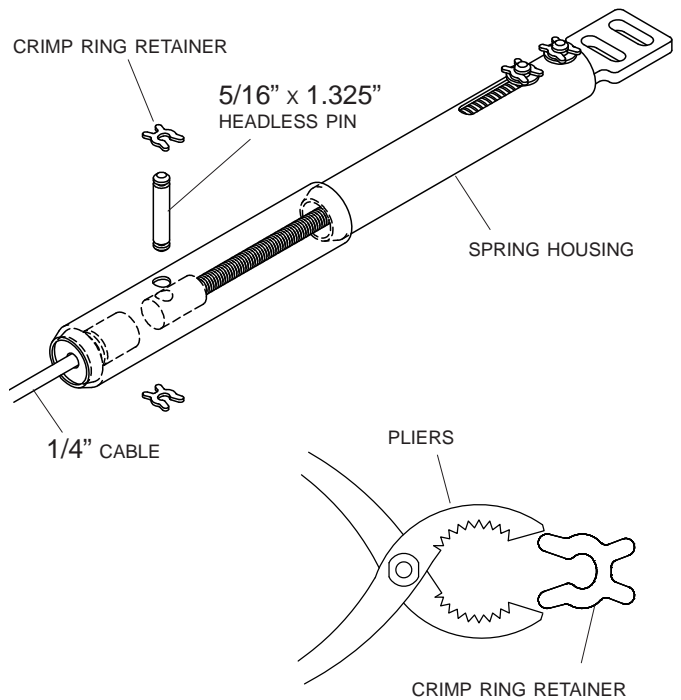


**NOTE:** Washers may be pre-assembled on cable. Outer housing washer is tapered. Narrow end of taper must face scale outer housing.

**STEP 4:** Extend adjustment rod 4 7/16" from edge of spring housing, then slide spring housing into outer housing.



**STEP 5:** Fasten outer housing to spring housing with 5/16" headless pin. Secure pin with 5/16" crimp ring retainers. Clip ring retainers into grooves on pins and close with pliers.



**NOTE:** Crimp ring retainers can only be used once.