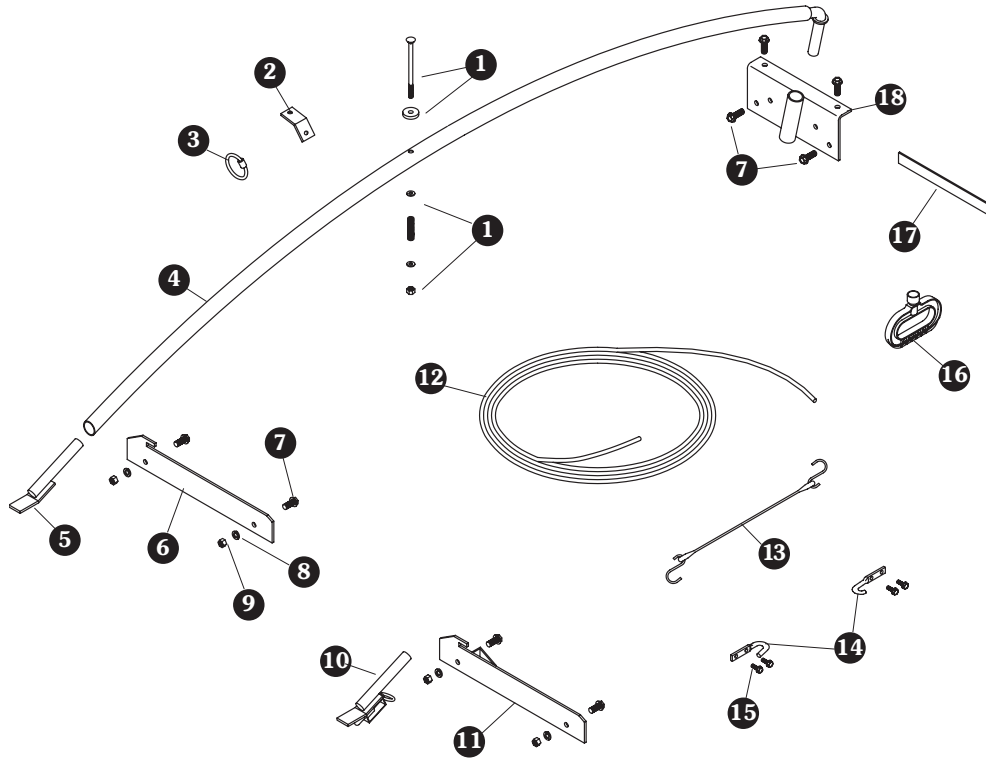


Install the Turning Point Bow™ reverse swing system according to instructions in the Owner's Manual, except install the components on the opposite sides of the box.



Item	Part #	Description
1	1110368	Bow Attachment Spring Assembly
2	1105325	Pull Rope Anchor
3	1701219	Quick Link - 5/16"
4	1111696	Turning Point™ High Rise Bow - Reverse Swing
	1111697	Turning Point™ Low Rise Bow - Reverse Swing
5	1105327	Bow Rest High Rise
	1105333	Bow Rest Low Rise
6	1105314	Bow Stop
7	1700400	Self-Tapping Screw - 3/8" x 1"
8	1700434	Lock Washer - 3/8"
9	1700407	Hex Nut - 3/8"
10	1105322	Bow Rest/Latch - High Rise
	1105338	Bow Rest/Latch - Low Rise
11	1111700	Turning Point™ Bow Stop w/Catch - Reverse Swing
12	1100469	Rope - 32'
13	1700649	Rubber Strap - 15"
14	1700682	Box Hook - 5/16" Holes
15	1700403	Self-Tapping Screw - 1/4" x 3/4"
16	1106929	Pull Handle
17	1107006	Pivot Bracket Spacer
18	1111699	Bow Pivot Bracket - Reverse Swing
19	1701206	Mechanical Tubing - 14 Ga x 1 1/2" x 24'
20	1701205	Mechanical Tubing - 14 Ga x 1 1/2" x 20'
21	1701204	Mechanical Tubing - 14 Ga x 1 1/2" x 16'
22	1700212	Protective Cap - 1 1/2" x 7 7/8"

NOTE: To prevent rust, paint all exposed metal, such as weld seams, and/or metal exposed by grinding or cutting, with corrosion resistant paint.