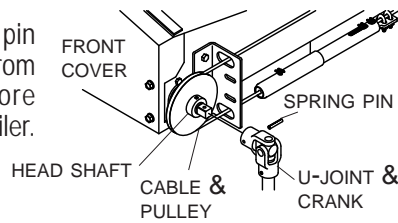


# Installation Instructions - Shur-Trak II™ Side Mount Electric Motor - Worm Drive

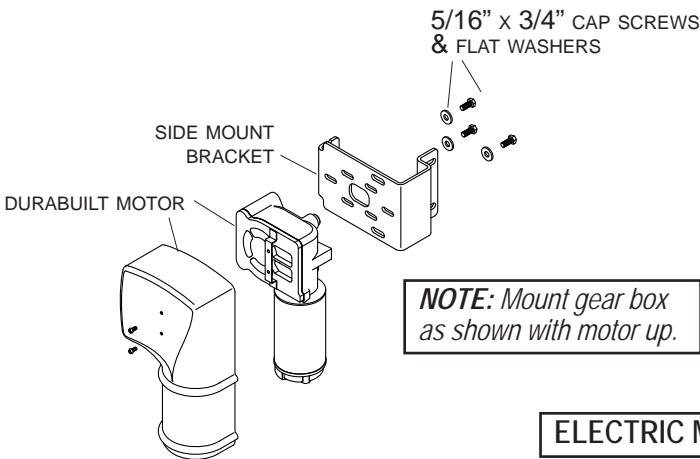
P/N 1111957 Rev. J

**STEP 1:** Remove spring pin and crank arm from head shaft. Store crank arm on trailer.



**NOTE:** Install motor on PASSENGER side only. Driver side is reserved for manual override crank arm.

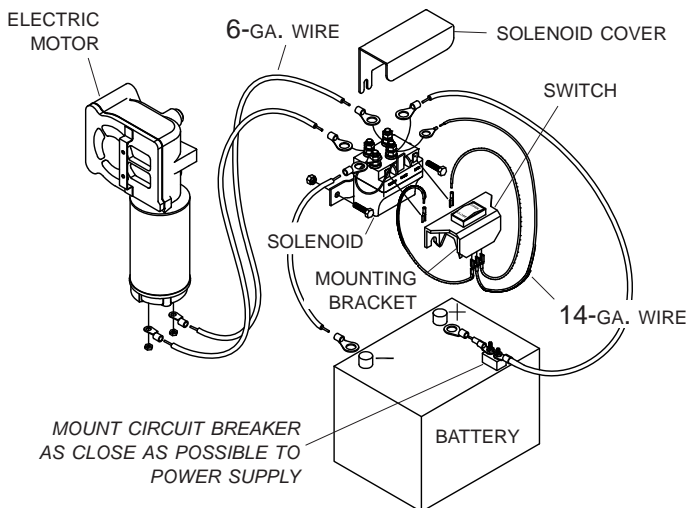
**STEP 2:** Loosely mount electric motor to side mount bracket. Fasten with screws supplied with motor and washers.



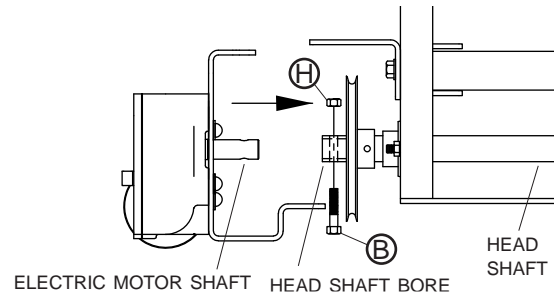
**NOTE:** Mount gear box as shown with motor up.

## ELECTRIC MOTOR WIRING

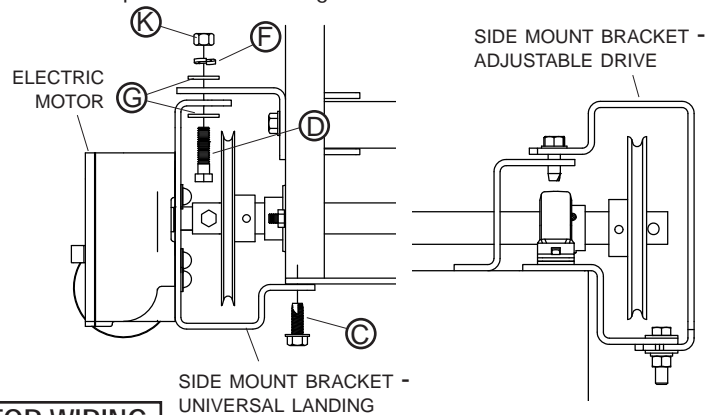
**STEP 5:** Mount solenoid in suitable location - ventilated area near battery is ideal. Run 6-ga. wire from motor to solenoid and from power supply to circuit breaker to solenoid as shown. Run 14-ga. wire from solenoid to switch. Mount switch in an area convenient to operator, inside or outside cab. Mount with bracket or install directly into dash panels.



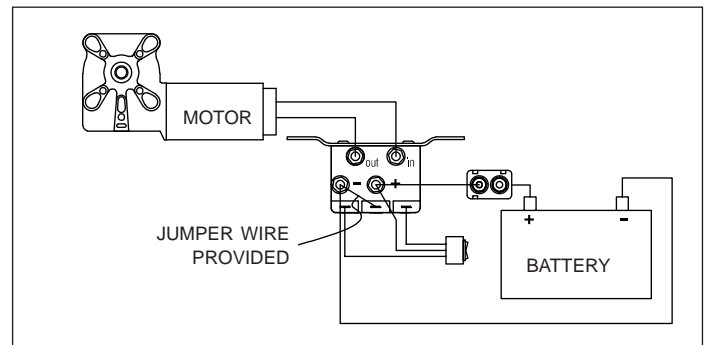
**STEP 3:** Slide electric motor shaft into head shaft bore. Fasten with cap screw **B** and lock nut **H**.



**STEP 4:** Fasten motor mount plate to cable guard. Fasten with screws **D**, lock washers **F**, flat washers **G** and nuts **K**. Replace hardware on front cap, engaging motor mount plate as shown. Tighten motor mount bolts.



**NOTE:** Ground system through switch only. Wires to motor reverse continuity.



### TIPS ON WIRING

- Pick up power at battery or terminal block. Use 6-ga. wire or larger when connecting to power supply and motor.
- Do not place wire in areas where wire could be pinched or cut during operation. Be sure to loop extra wire at hinge area on dump bodies.
- If switch is running system backwards, reverse 14-ga. wire at solenoid to reverse system operation.
- Momentary contact must be held open or closed to operate system.

PO BOX 713 ■ 2309 SHUR-LOK STREET  
YANKTON, SOUTH DAKOTA 57078-0713  
PH. 1-800-474-8756 ■ FAX 605-665-0501

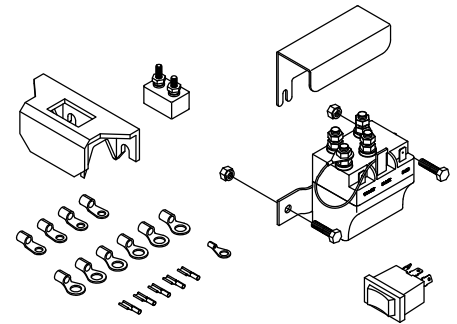
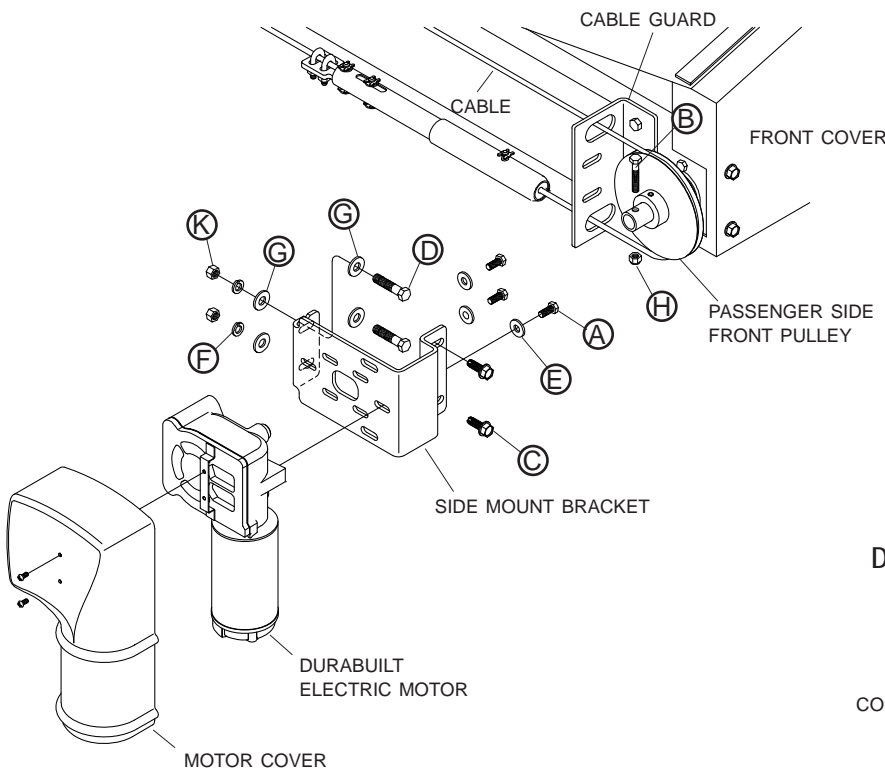


SHUR-CO® HELP LINE  
CALL: 1-866-748-7435  
www.shurco.com

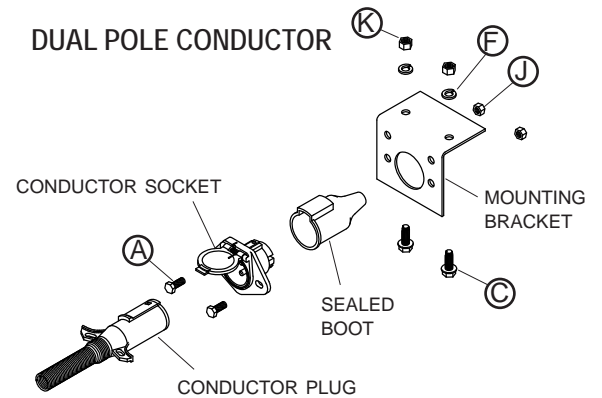
**ELECTRIC COMPONENTS**

Switch, bracket, breaker, solenoid and electric parts kit.

**DURABUILT ELECTRIC MOTOR**  
Lower torque for shorter truck boxes.



**DUAL POLE CONDUCTOR**



**Hardware**

Item	Part #	Description
A.	1701045	5/16" x 3/4" Cap Screw
B.	1701468	5/16" x 1 3/4" Cap Screw
C.	1700400	3/8" x 1" Self-Tapping Screw
D.	1701434	3/8" x 1 1/2" Cap Screw
E.	1700428	5/16" Flat Washer
F.	1700434	3/8" Lock Washer
G.	1701176	3/8" Flat Washer
H.	1702492	5/16" Top Lock Nut
J.	1700411	5/16" Hex Nut
K.	1700407	3/8" Hex Nut