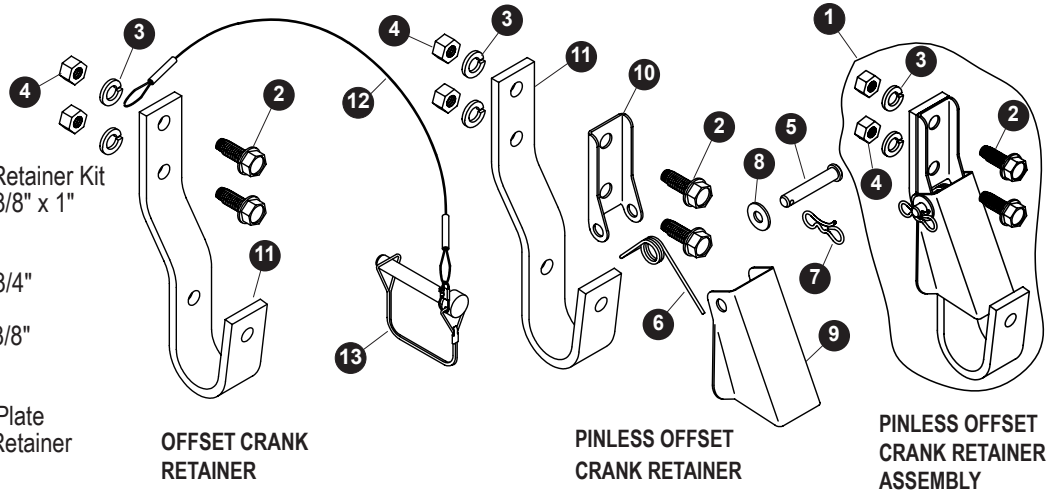


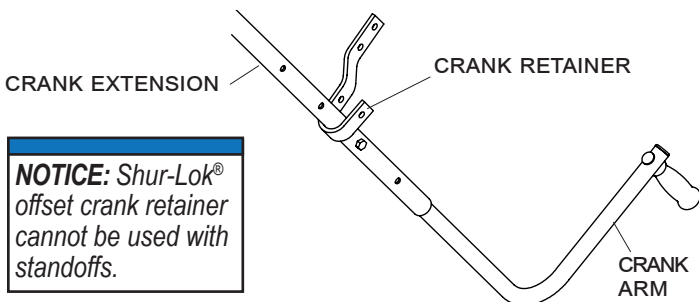
Item	Part #	Description
1.	1121864	Pinless Offset Crank Retainer Kit
2.	1700400	Self-Tapping Screw - 3/8" x 1"
3.	1700434	Lock Washer - 3/8"
4.	1700407	Hex Nut - 3/8"
5.	1703133	Clevis Pin - 5/16" x 1 3/4"
6.	1703134	Torsion Spring
7.	1704380	Bowtie Cotter Pin - 1 3/8"
8.	1700427	Flat Washer - 1/4"
9.	1114600	Crank Retainer Lock
10.	1114599	Crank Retainer Base Plate
11.	1101930	Offset J-Hook Crank Retainer
12.	1100574	Cable w/Snap
13.	1700526	Wire Lock Pin



Offset pinless crank retainers hold crank arms securely in place with spring-loaded locking system.

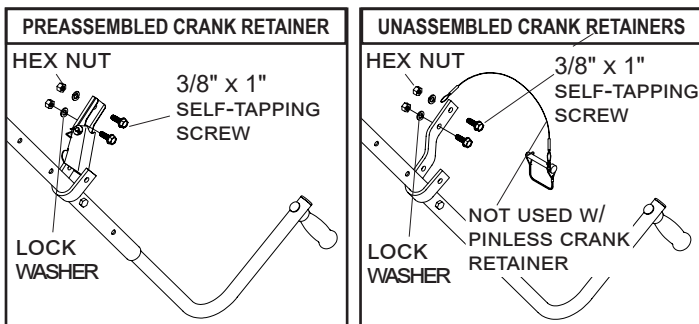
NOTICE: Locate crank retainer where hook will go around 1-1/4-inch diameter crank extension, not around crank arm.

STEP 1: To determine crank retainer location on box, roll tarp closed with roll tube under latchplate and crank arm assembly in closed position. Locate crank retainer where it will hold crank arm assembly securely in place while under 40 to 60 pounds of pressure.



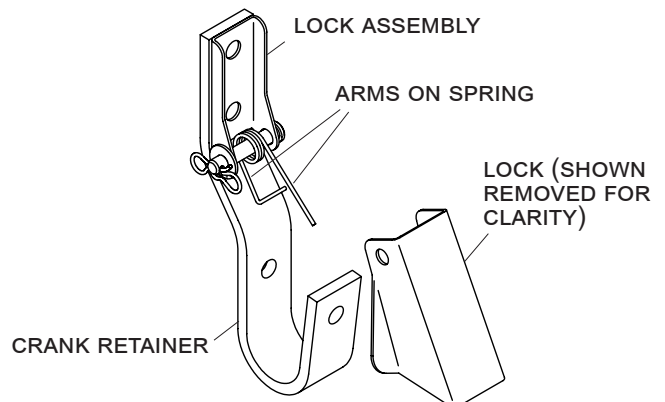
NOTICE: Shur-Lok® offset crank retainer cannot be used with standoffs.

STEP 2: Mark and drill 5/16" holes. Fasten offset crank retainer to box with 3/8" x 1" self-tapping screws. If using wire lock pin, secure end of cable behind crank retainer as shown.

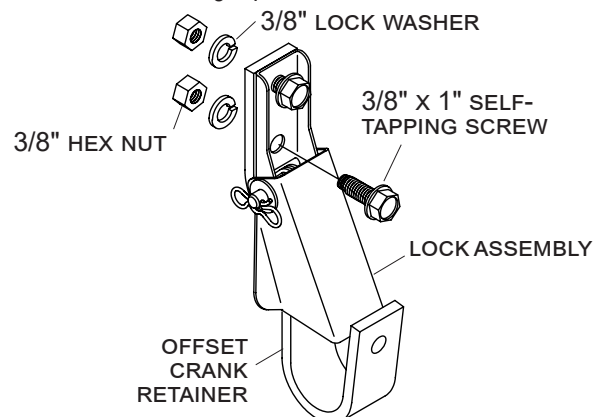


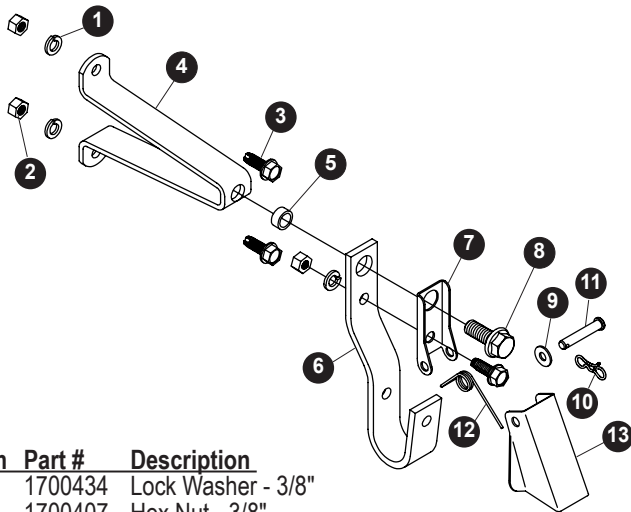
NOTICE: If installing unassembled pinless option, continue with steps 3 and 4. If installing assembled pinless crank retainer, ignore steps 3 and 4.

STEP 3: Unfasten and remove crank retainer from box. Hold lock assembly against crank retainer. Position arms on spring as shown.



STEP 4: Reinstall offset crank retainer and locking system to box with 3/8" x 1" self-tapping screws, lock washers and nuts, fastening top screw first.



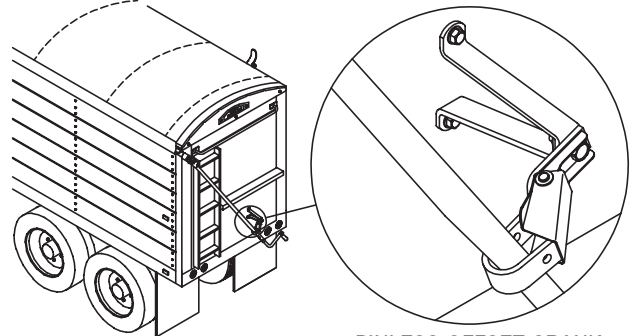


Item	Part #	Description
1.	1700434	Lock Washer - 3/8"
2.	1700407	Hex Nut - 3/8"
3.	1700400	Self-Tapping Screw - 3/8" x 1"
4.	1100033	Crank Retainer Standoff - 7"
5.	1100306	Bushing - 11/16" x 5/16"
6.	1118641	Offset J-Hook Crank Retainer
7.	1118657	Crank Retainer Base Plate
8.	1702996	Cap Screw - 1/2" x 1 1/4"
9.	1700427	Flat Washer - 1/4"
10.	1704380	Bowtie Cotter Pin - 1 3/8"
11.	1703133	Clevis Pin - 5/16" x 1 3/4"
12.	1703134	Torsion Spring
13.	1114600	Crank Retainer Lock

NOTICE: When mounting a single crank retainer, open and close the tarp to determine the mounting location that allows it to hold the crank in both the open and closed positions.

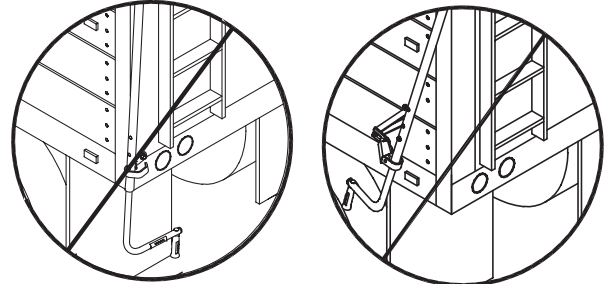
STEP 3: To determine crank retainer location on box, roll tarp closed with crank arm in closed position. Locate crank retainer where it will hold crank assembly securely in place.

NOTICE: Locate crank retainer where hook will go around 1-1/4-inch diameter crank extension, not around crank arm.



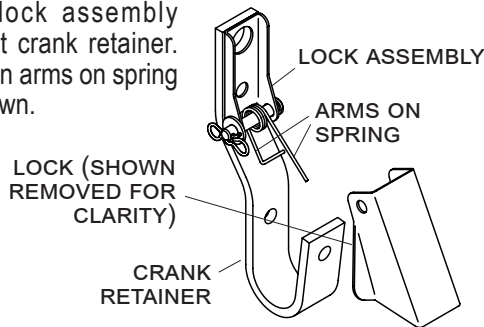
PINLESS OFFSET CRANK RETAINER W/STANDOFF

NOTICE: Do not mount the pinless offset crank retainer without a standoff or on the side of the box.



STEP 4: Mark hole locations on box, using standoff as guide, and drill 13/32" holes. Assemble and fasten crank retainer with supplied hardware.

STEP 1: Hold lock assembly against crank retainer. Position arms on spring as shown.



STEP 2: Fasten crank retainer to lock assembly with 3/8" x 1" self-tapping screw, lock washer and nut, fastening through lower hole.

