



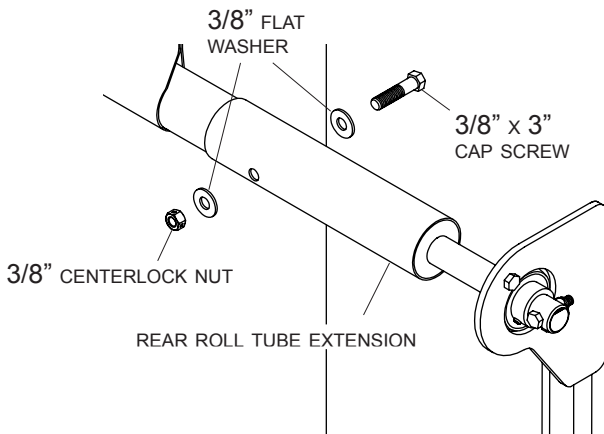
WARNING

Flex arms are under tension while torsion springs are engaged. Use caution while assembling and disassembling arms. Failure to read and follow instructions could result in serious injury or death.

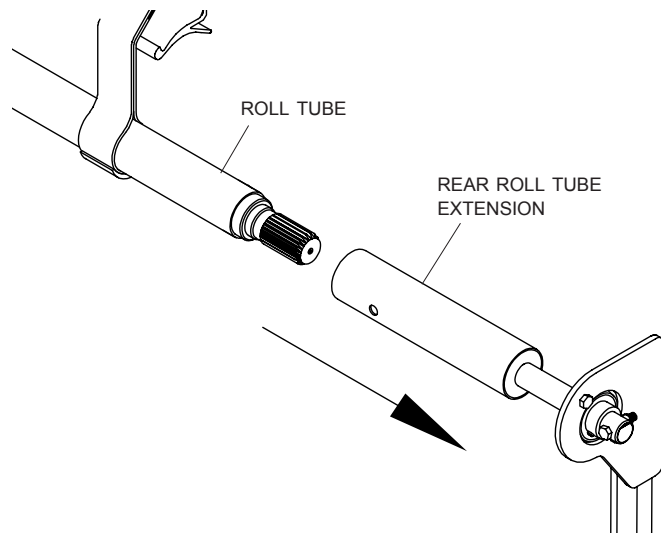
Perform the following steps to remove and replace your 3500 Series Electric pivot pins.

Remove Existing Rear Pivot Pin:

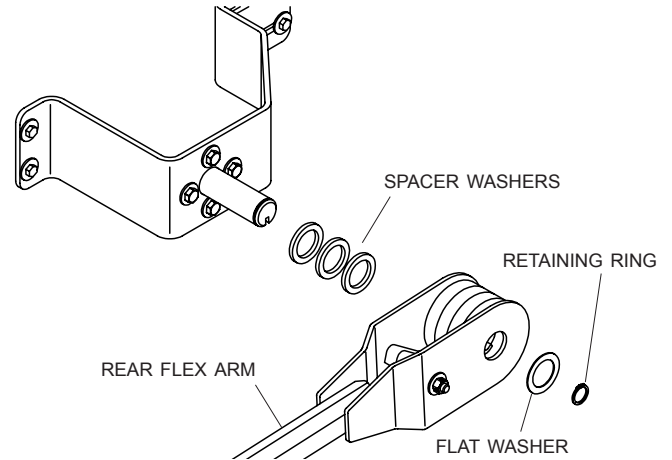
STEP 1: Close tarp but let roll tube hang loose under latchplate. Remove 3/8" x 3" cap screw, flat washers and lock nut from rear roll tube extension with bearing shaft.



STEP 2: Carefully slide rear roll tube extension off roll tube. Flex arm will be under tension and have some downward force.

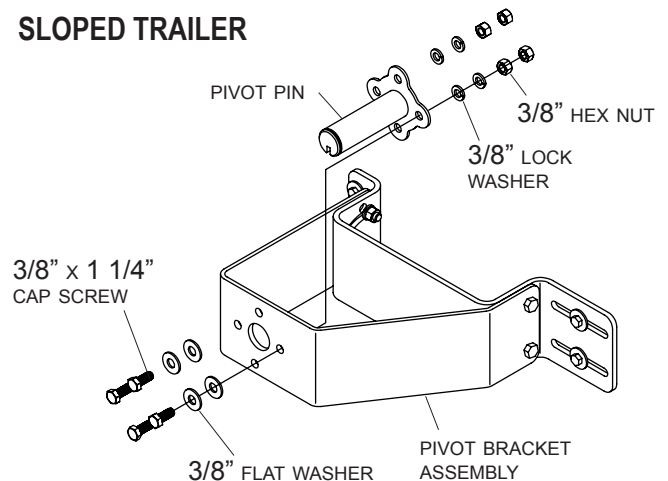


STEP 3: Remove retaining ring from rear flex arm assembly. Carefully slide retaining ring, flat washer, rear flex arm and spacer washers from pivot pin.

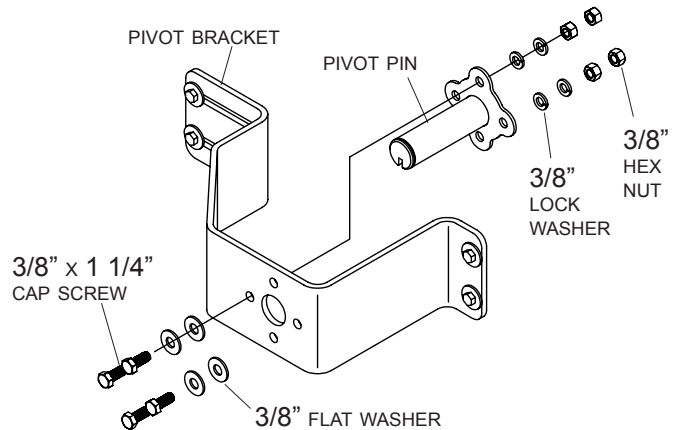


STEP 4: Remove 3/8" x 1 1/4" cap screws, lock washers, flat washers and nuts from pivot bracket assembly. Remove and discard existing pivot pin. Discard 3/8" x 1 1/4" cap screws.

SLOPED TRAILER



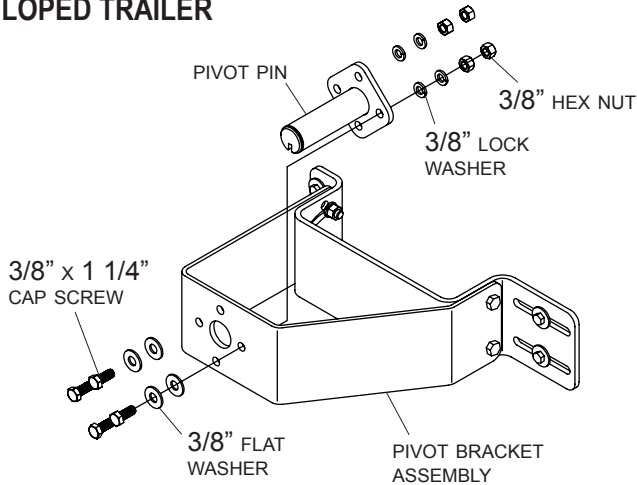
VERTICAL TRAILER



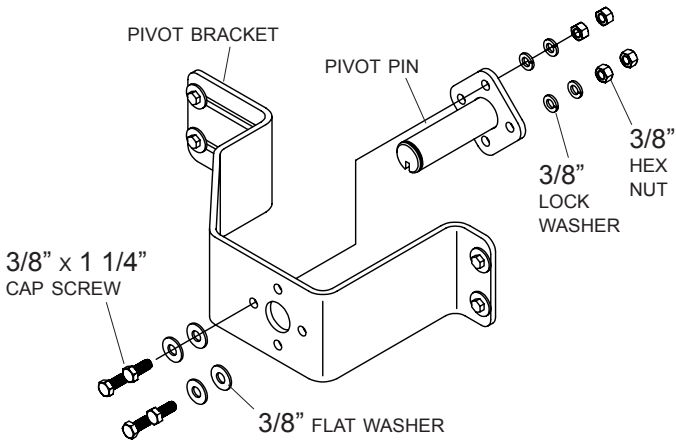
Install New Rear Pivot Pin:

STEP 1: Assemble new pivot pin to pivot bracket with 3/8" x 1" cap screws, lock washers, flat washers and nuts.

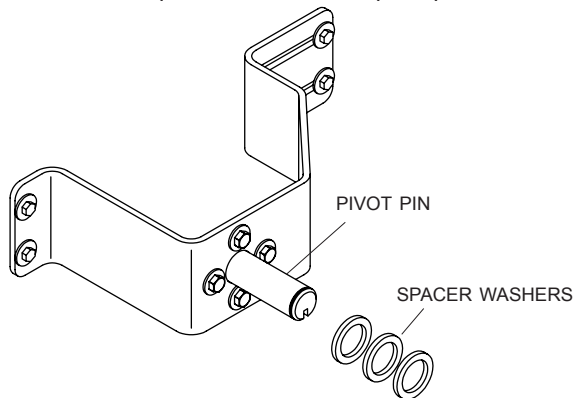
SLOPED TRAILER



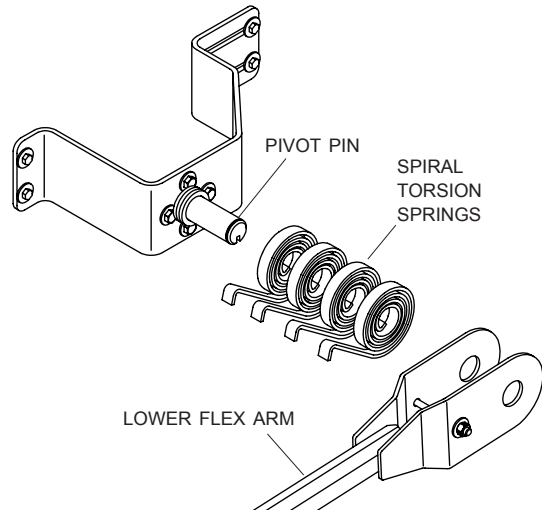
VERTICAL TRAILER



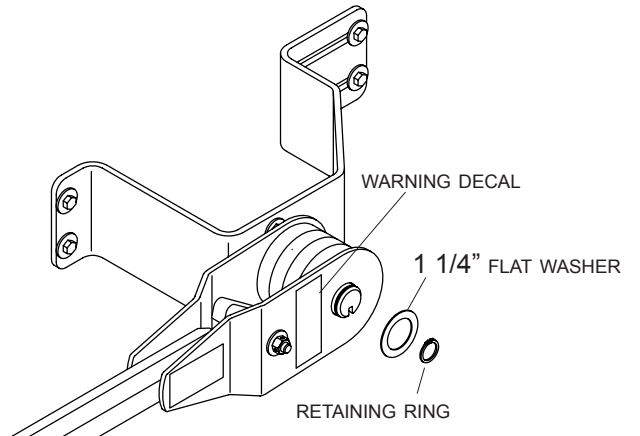
STEP 2: Assemble spacer washers onto pivot pin.



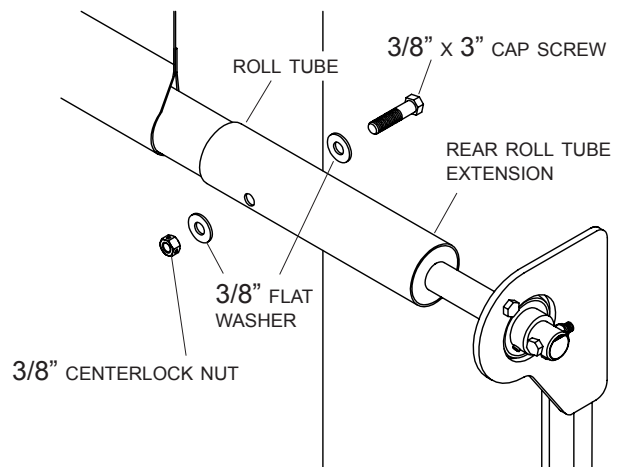
STEP 3: Assemble spiral torsion springs and lower flex arm on to pivot pin. Hook springs over 3/8" x 3 1/2" cap screw.



STEP 4: Secure with 1 1/4" flat washer and retaining ring. Apply warning decal in location shown.

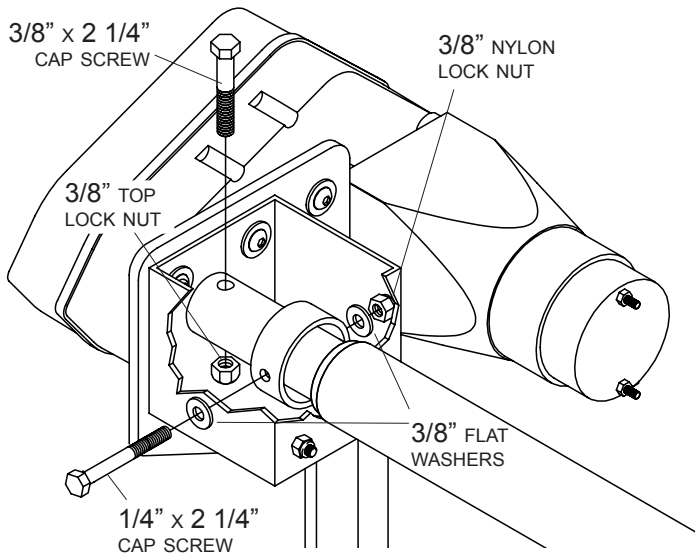


STEP 5: Replace rear roll tube extension onto roll tube. Fasten with 3/8" x 3" cap screw, two flat washers and lock nut.



Remove Existing Front Pivot Pin:

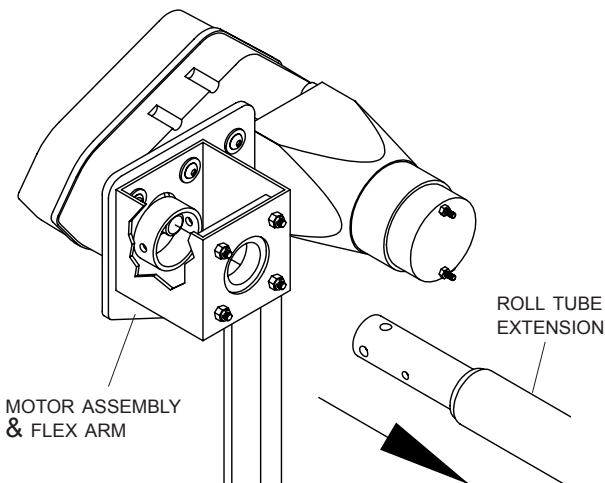
STEP 1: Close tarp but let roll tube hang loose under latchplate. Remove 3/8" x 2 1/4" cap screw and top lock nut from motor shaft. Remove 1/4" x 2 1/4" cap screw, flat washers and nylon lock nut from manual override collar.



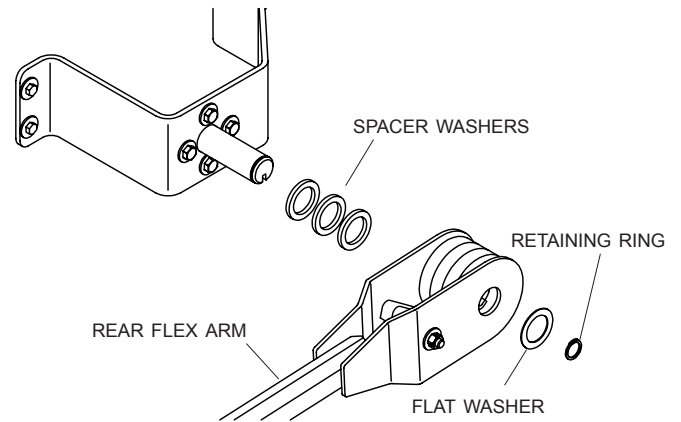
STEP 2: Grasp electric motor firmly with both hands and carefully slide motor assembly off front roll tube extension.

⚠ WARNING

Flex arms are under tension while torsion springs are engaged. Use caution while assembling and disassembling arms. Failure to read and follow instructions could result in serious injury or death.

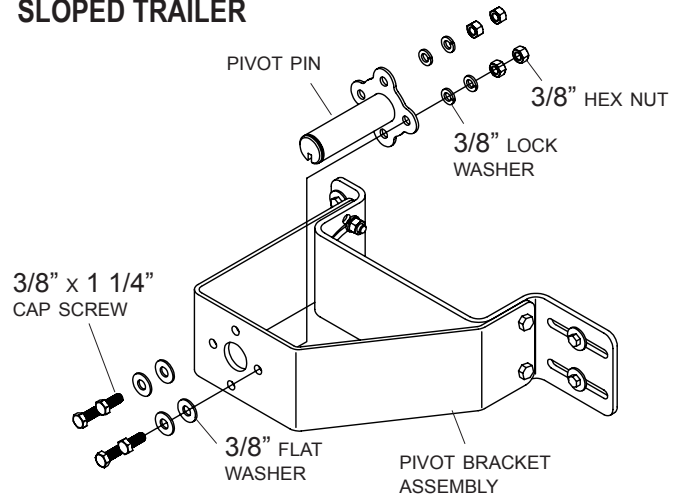


STEP 3: Remove retaining ring from rear flex arm assembly. Carefully slide retaining ring, flat washer, rear flex arm and spacer washers from pivot pin.

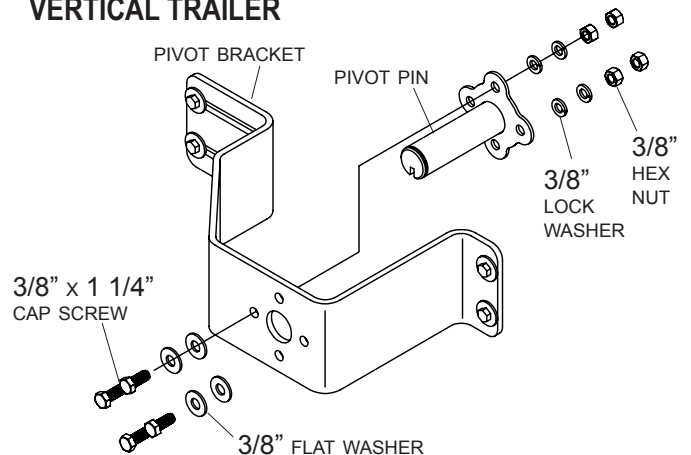


STEP 4: Remove 3/8" x 1" cap screws, lock washers, flat washers and nuts from pivot bracket assembly. Remove and discard existing pivot pin. Discard 3/8" x 1" cap screws.

SLOPED TRAILER



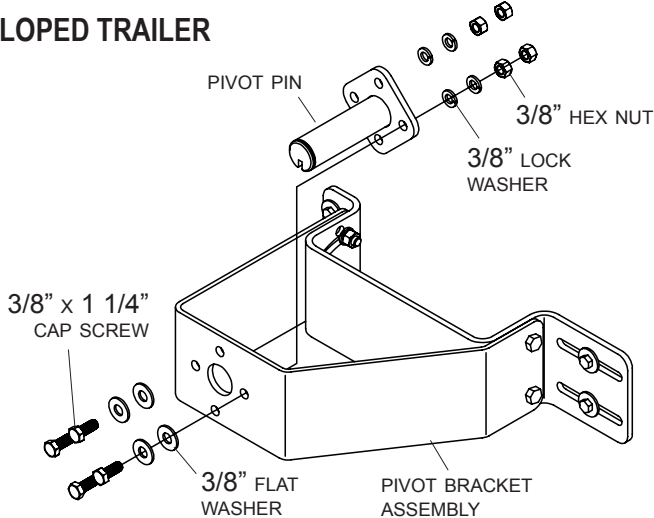
VERTICAL TRAILER



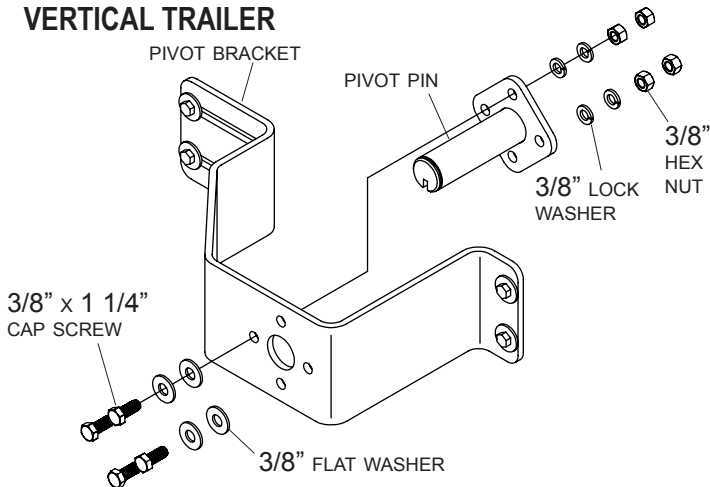
Install New Front Pivot Pin:

STEP 1: Assemble new pivot pin to pivot bracket with 3/8" x 1 1/4" cap screws, lock washers, flat washers and nuts.

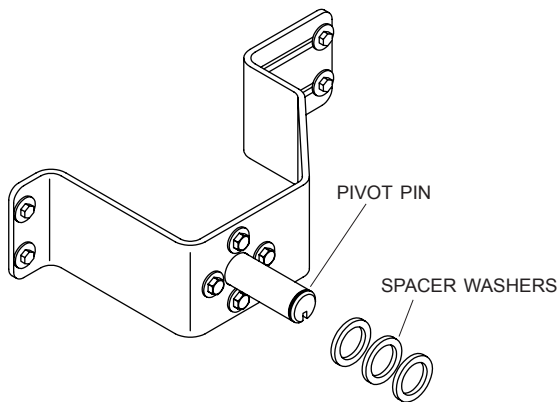
SLOPED TRAILER



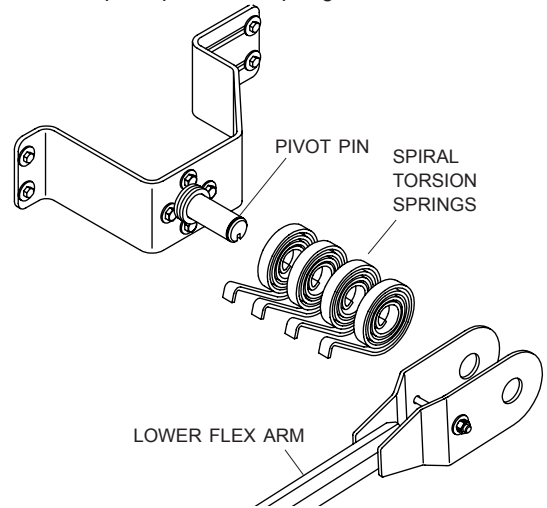
VERTICAL TRAILER



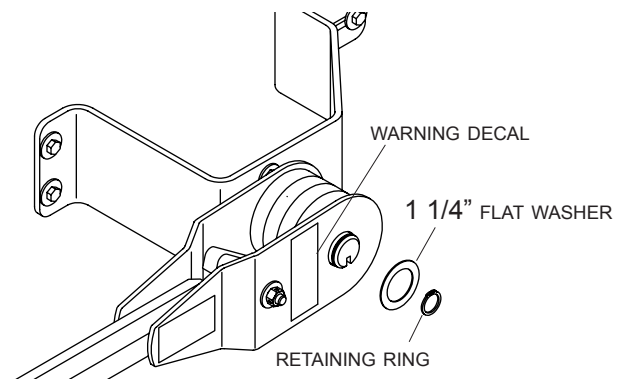
STEP 2: Assemble spacer washers onto pivot pin.



STEP 3: Assemble spiral torsion springs and lower flex arm onto pivot pin. Hook springs over 3/8" x 3 1/2" cap screw.



STEP 4: Secure with 1 1/4" flat washer and retaining ring. Apply warning decal in location shown.



STEP 5: Replace motor assembly and flex arm onto front roll tube extension. Fasten roll tube extension to motor shaft with 3/8" x 2 1/4" cap screw and top lock nut. Fasten manual override collar with 1/4" x 2 1/4" cap screw, flat washers and nylon lock nut.

