



ENGINEERED TARPING SOLUTIONS

P/N 1118023 Rev. C



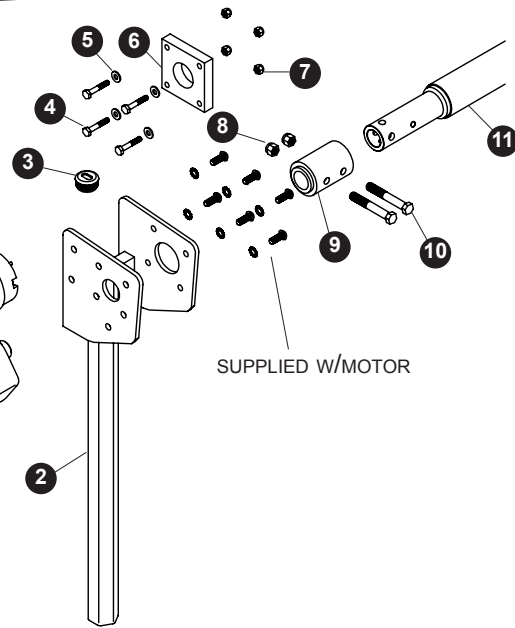
# 3500 Series Electric Upper Flex Arm Retro-Fit Instructions

Retro-Fit Kit to be used only on 3500 Systems  
that have already been installed

*READ BEFORE INSTALLING*

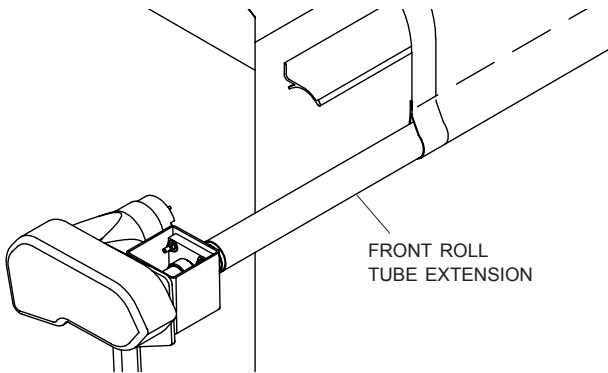
PO BOX 713 ■ 2309 SHUR-LOK STREET ■ YANKTON, SD 57078-0713  
PHONE 1-800-4-SHUR-LOK (1-800-474-8756) ■ FAX 605-665-0501  
[www.shurco.com](http://www.shurco.com)

SHOP ONLINE: [www.shopshurco.com](http://www.shopshurco.com)

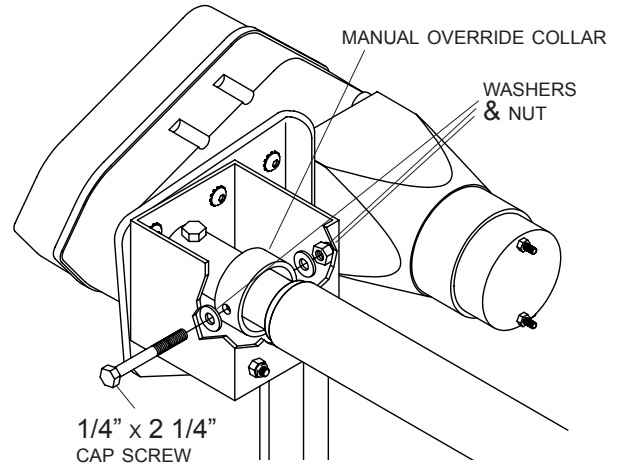


Item	Part #	Description
	1118024	Upper Flex Arm 3500 Retrofit Kit
1.	1703135	Heavy-Duty Motor
2.	1118015	Upper Flex Arm - Motor Side
3.	1703882	Cap Plug w/Hole - 1 1/4"
4.	1700377	Cap Screw - 1/4" x 1 1/2"
5.	1700427	Flat Washer - 1/4"
6.	1110408	Flange Bearing
7.	1701543	Nylon Lock Nut - 1/4"
8.	1701580	Nylon Lock Nut - 3/8"
9.	1118020	Coupler - Motor Shaft/Roll Tube
10.	1704267	Cap Screw - 3/8" x 2 3/4"
11.	1117497	Roll Tube Ext. w/Drive Shaft - Sloped

**STEP 1:** Roll tarp closed and let roll tube hang loosely below latchplate.

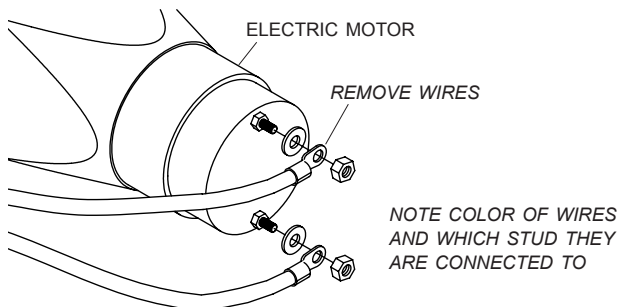


**STEP 3:** Remove 1/4" x 2 1/4" cap screw, washers and nut from manual override collar. Discard hardware.

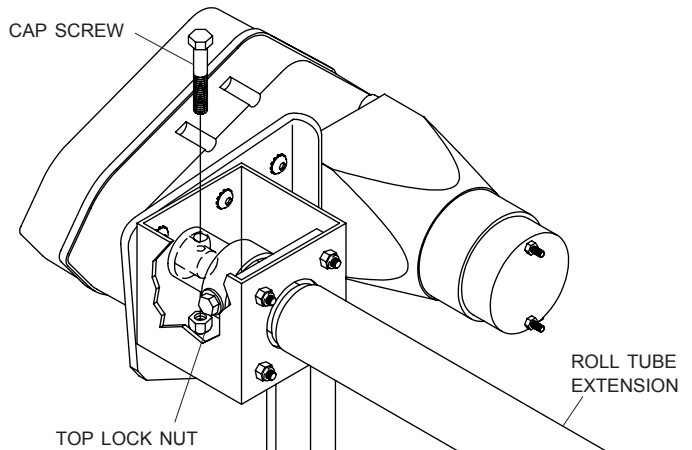


**⚠ WARNING**  
Flex arms are under tension while torsion springs are engaged. Use caution while assembling and disassembling arms. Failure to read and follow instructions could result in serious injury or death.

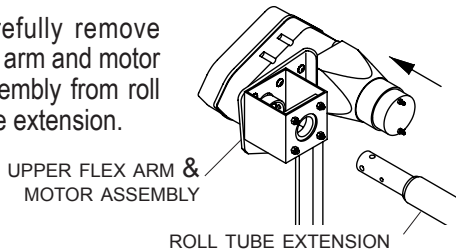
**STEP 2:** Shut off or disconnect power source. Remove electric wiring from motor.



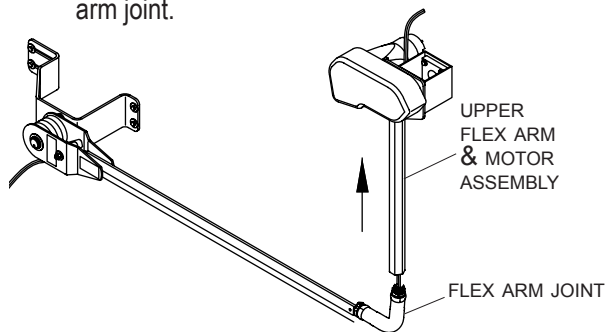
**STEP 4:** Remove cap screw and top lock nut from motor and roll tube extension.



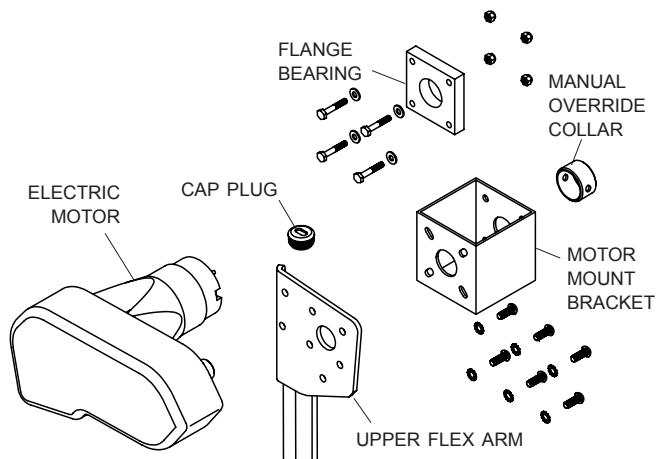
**STEP 5:** Carefully remove flex arm and motor assembly from roll tube extension.



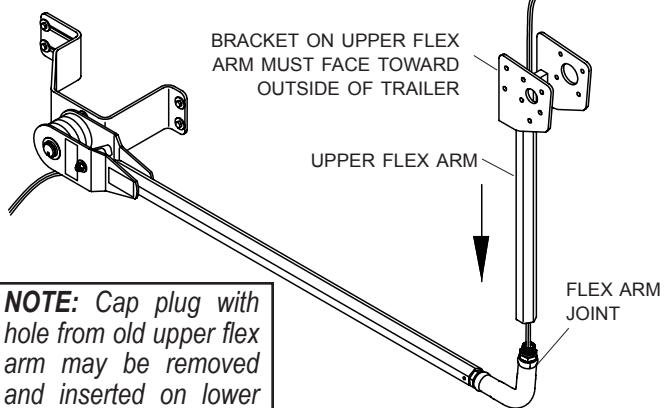
**STEP 6:** Remove upper flex arm and motor assembly from flex arm joint.



**STEP 7:** Disassemble electric motor and components from upper flex arm. Discard manual override collar, existing upper flex arm and motor mount bracket.

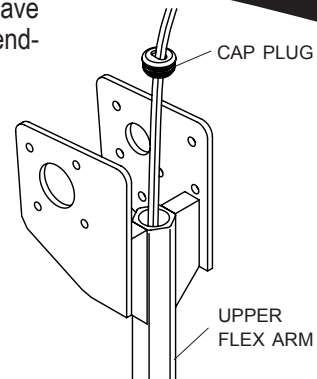


**STEP 8:** Insert wire through new upper flex arm, then thread upper flex arm on to flex arm joint. **Hand tighten only.**

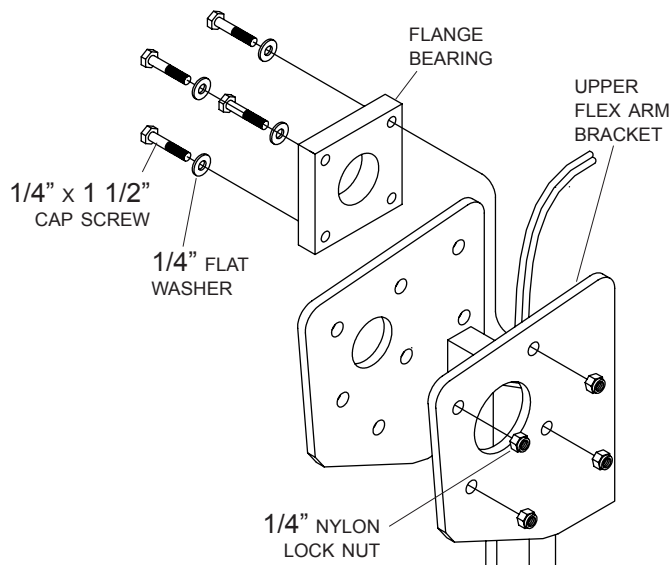


**NOTE:** Cap plug with hole from old upper flex arm may be removed and inserted on lower flex arm to protect wire insulation from wear.

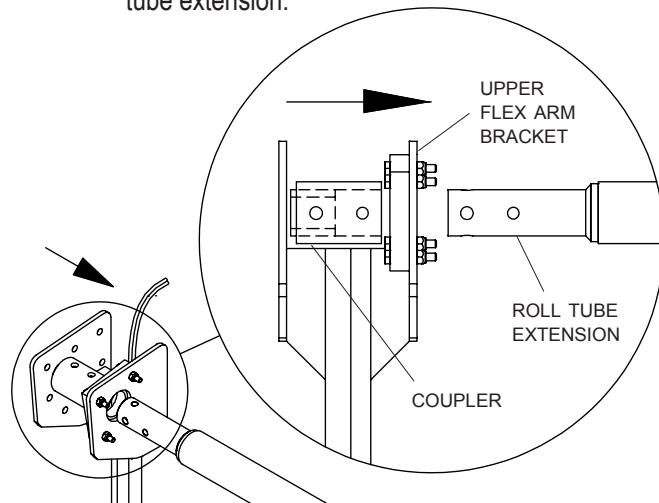
**STEP 9:** Install cap plug with slot on upper flex arm. Leave about 12" of wire extending out of flex arm.



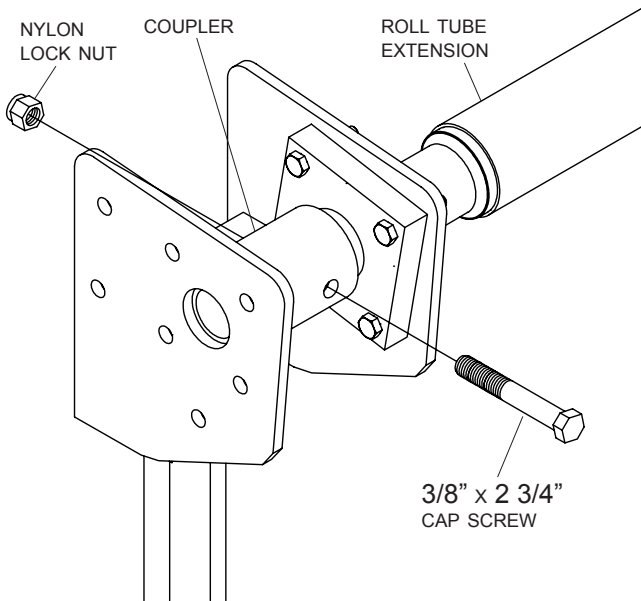
**STEP 10:** Mount flange bearing to upper flex arm bracket with 1/4" x 1 1/2" cap screws, washers and nuts. **Finger tighten only to allow for adjustment.**



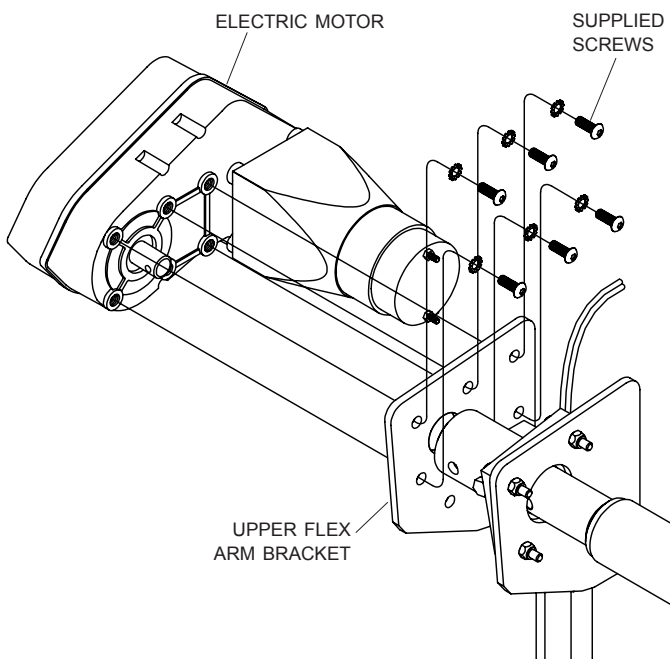
**STEP 11:** Hold coupler inside upper flex arm bracket as shown and slide coupler and upper flex arm bracket onto roll tube extension.



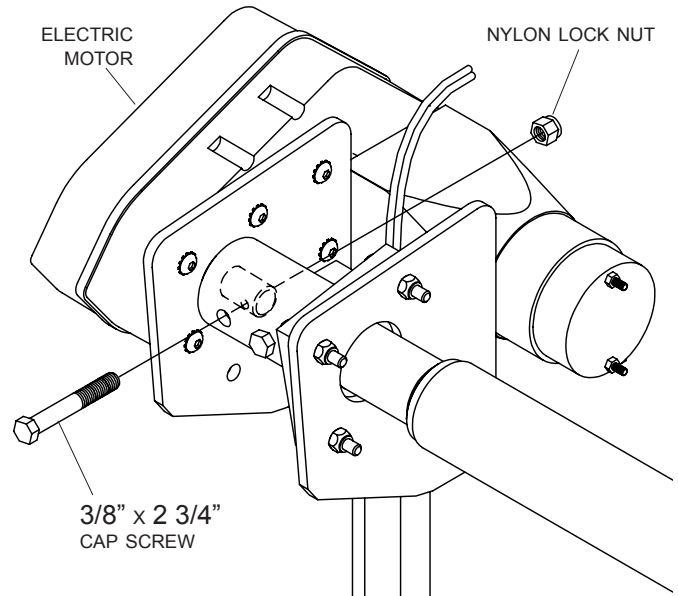
**STEP 12:** Fasten coupler to roll tube extension with 3/8" x 2 3/4" cap screw and nylon lock nut. **Finger tighten only.**



**STEP 13:** Fasten electric motor to upper flex arm bracket with supplied screws.



**STEP 14:** Fasten electric motor shaft to coupler with 3/8" x 2 3/4" cap screw and nylon lock nut.



**STEP 15:** Tighten all motor connection bolts, shaft bolts, flange bearing bolts, etc. securely.

**STEP 16:** Reconnect electric wires to motor.

