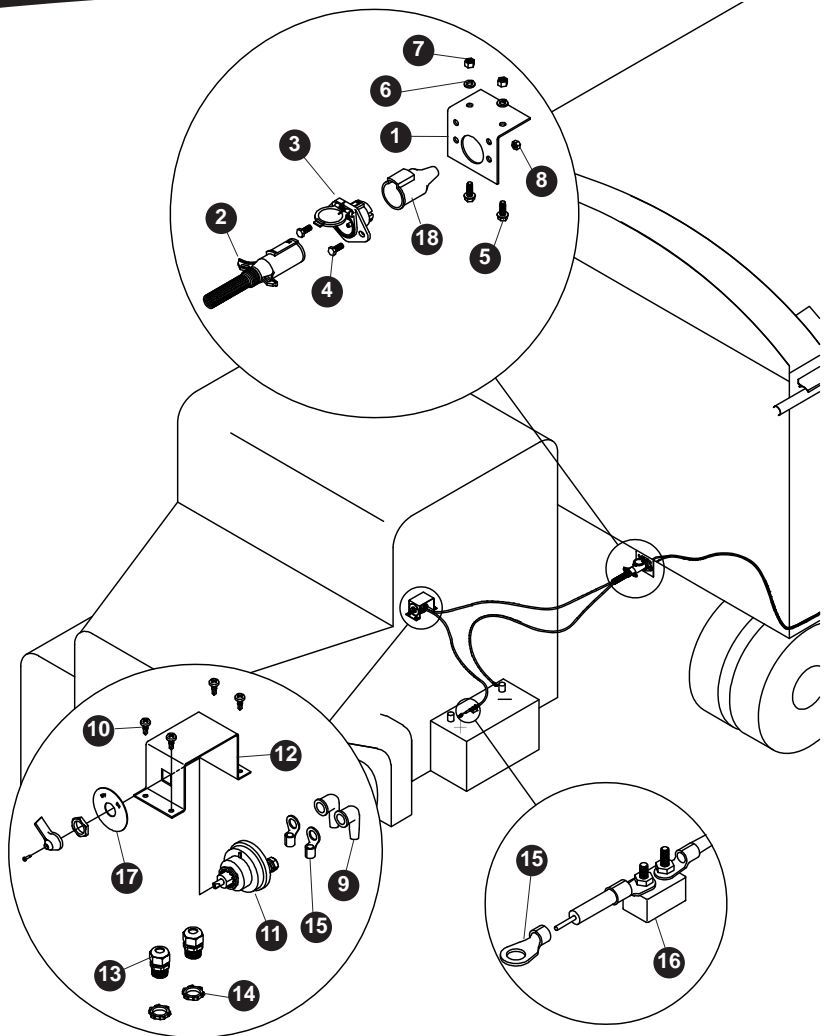
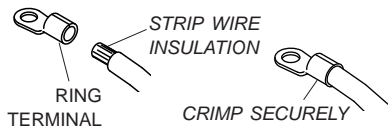


Item	Part #	Description
	1118417	Master Disconnect Cab Wiring Kit
	1120466	Master Disconnect Kit w/10' of Wire*
	1120467	Master Disconnect Kit - w/30' of Wire*
1	1109015	Mounting Bracket for Conductor Socket
2	1115385	Heavy-Duty Dual Conductor Plug
3	1115386	Heavy-Duty Dual Conductor Socket
4	1701045	Cap Screw - 5/16" x 3/4"
5	1700400	Self-Tapping Screw - 3/8" x 1"
6	1700434	Lock Washer - 3/8"
7	1700407	Hex Nut - 3/8"
8	1700411	Hex Nut - 5/16"
9	1704330	Rubber Insulating Boot
10	1700398	Self-Drilling Screw - 1/4" x 3/4"
11	1704283	Battery Disconnect Rotary Switch
12	1118323	Disconnect Switch Mounting Bracket
13	1704152	Dome Nut - 1/2"
14	1704187	Lock Nut - 1/2"
15	1703244	Ring Terminal - 6 Ga. x 3/8" Stud
16	1704354	40-Amp Modified-Reset Circuit Breaker
17	1704284	Face Plate
18	1704573	Sealed Conductor Boot

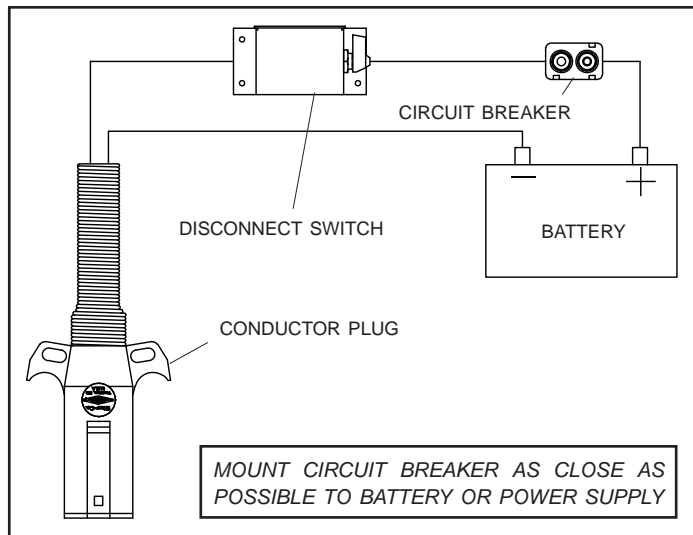
*Wire length needed is determined by battery location.



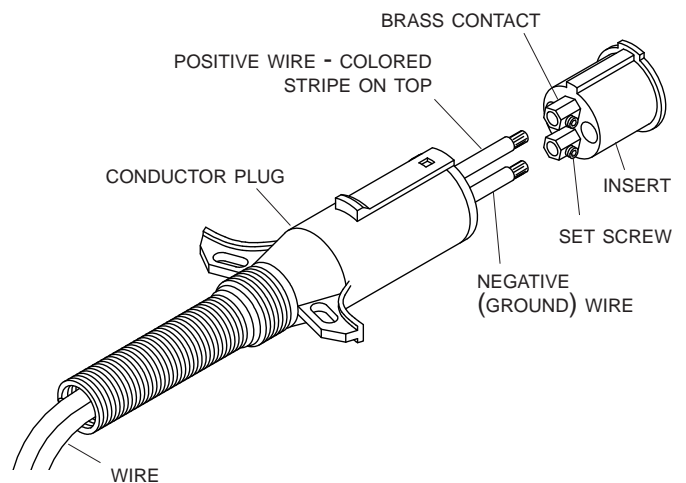
Cut wires to length and strip only enough wire insulation to install ring terminals. Insert bare wire into ring terminals and crimp securely.



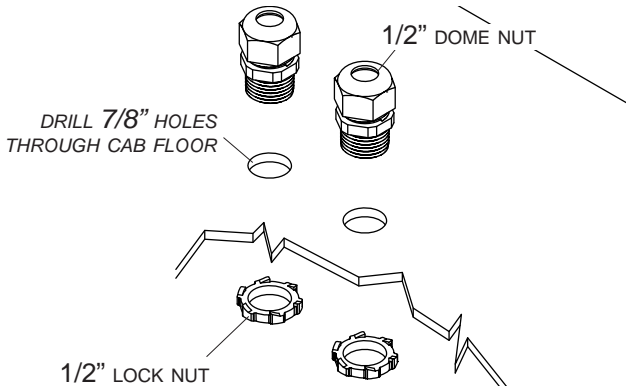
STEP 1: Circuit Breaker & Battery: Mount circuit breaker as close as possible to battery or power supply.



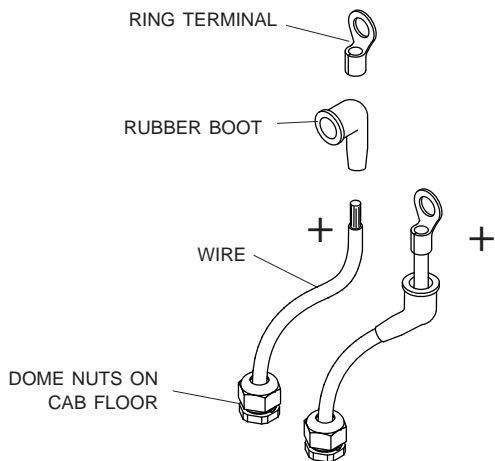
STEP 2: Conductor Plug: Unfasten and remove insert from conductor plug. Feed 6 ga. wire through plug and into brass contacts on insert. Tighten set screws to secure wires. Replace insert into conductor plug and secure screw.



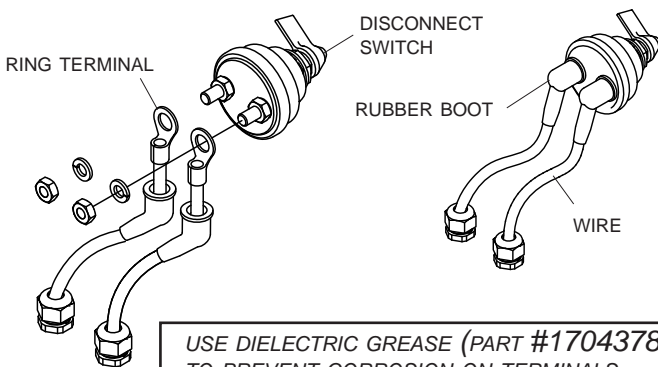
STEP 1: Master Disconnect Switch: Drill two 7/8" holes in cab floor to route wire into cab. Install dome nut strain reliefs into holes.



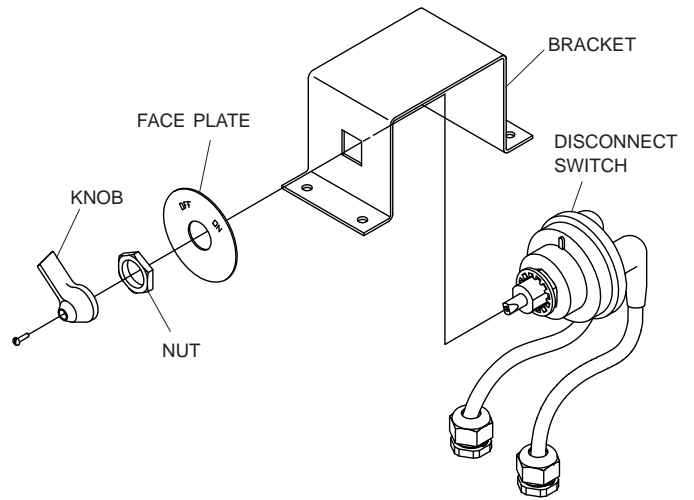
STEP 2: Run positive 6 ga. wire from battery through dome nuts on cab floor. Run wire ends through rubber boots and crimp 3/8" ring terminals to ends of wire.



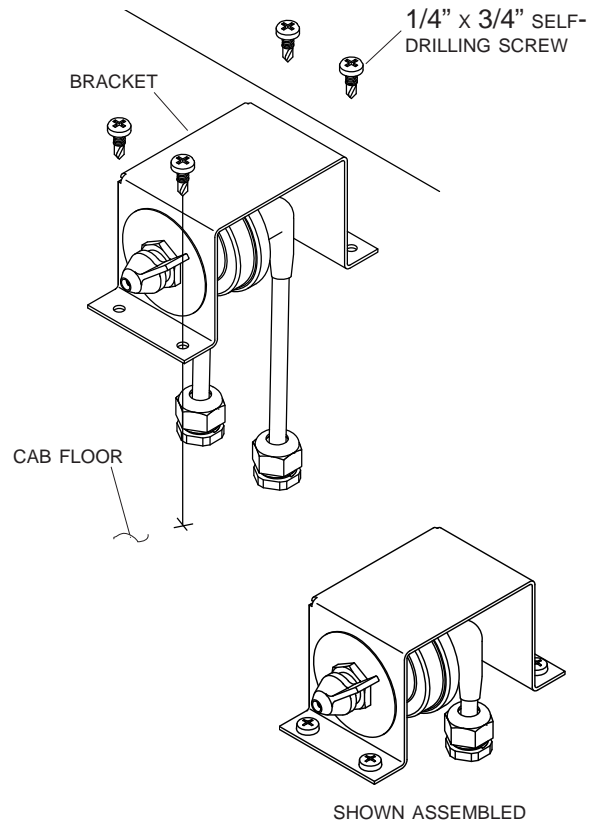
STEP 3: Connect wires to disconnect switch. Coat with dielectric grease and install rubber boots over ring terminals.



STEP 4: Remove knob and nut from disconnect switch and assemble face plate and disconnect switch to bracket as shown.



STEP 5: Fasten bracket to cab floor with 1/4" x 3/4" self-drilling screws.



POWER TO SYSTEM WILL REMAIN ACTIVE UNTIL DISCONNECT SWITCH IS TURNED OFF.