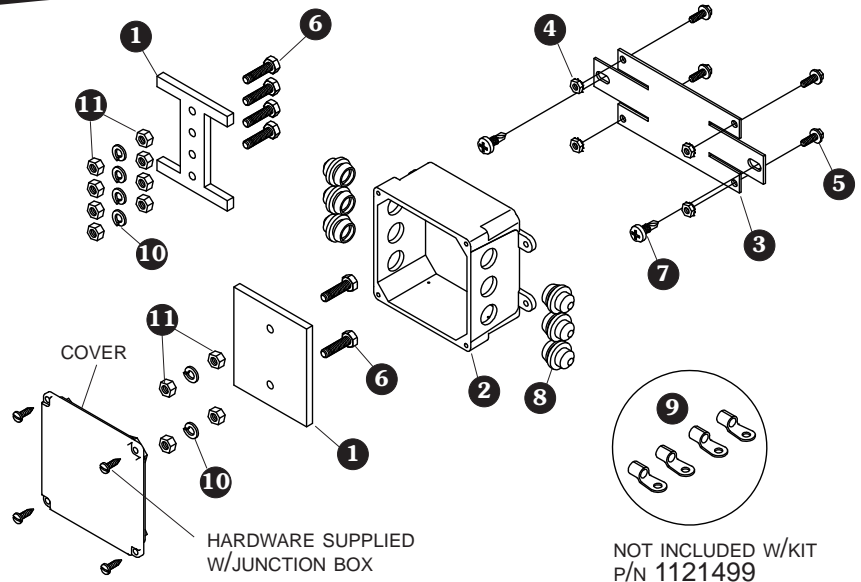
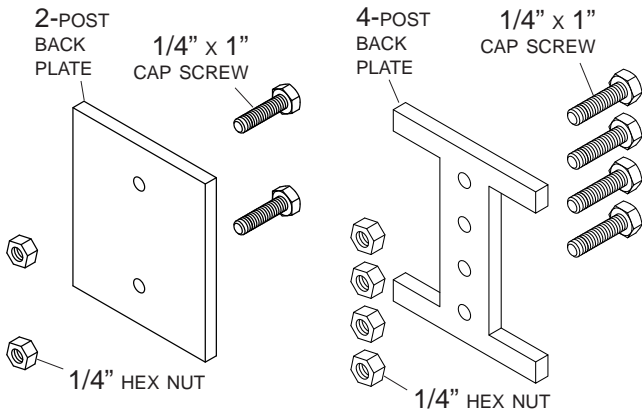


Item	Part #	Description
	1119366	Junction Box Kit - 6 Hole - 2 Post
	1121499	Junction Box Kit - 6 Hole - 4 Post
1.	1119364	Junction Box Back Plate - 2 Post
	1121500	Junction Box Back Plate - 4 Post
2.	1119365	Junction Box - 6 Hole
3.	1119438	Junction Box Mounting Plate
4.	1702653	Machine Screw Nut w/Washer
5.	1704308	Flange Hd. Cap Screw - #10 x 1/2"
6.	1700381	Cap Screw - 1/4" x 1"
7.	1700398	Self-Drilling Screw - 1/4" x 3/4"
8.	1704556	Rubber Grommet
9.	1702707	Ring Terminal - 6 Ga. x 1/4" Stud
10.	1700436	Lock Washer - 1/4"
11.	1700408	Hex Nut - 1/4"

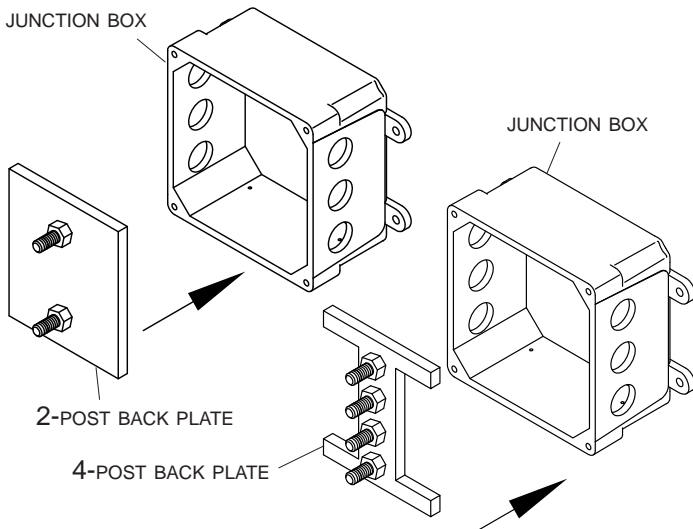
**NOTE:** Routing wires through sealed junction box greatly reduces corrosion on wire connections.



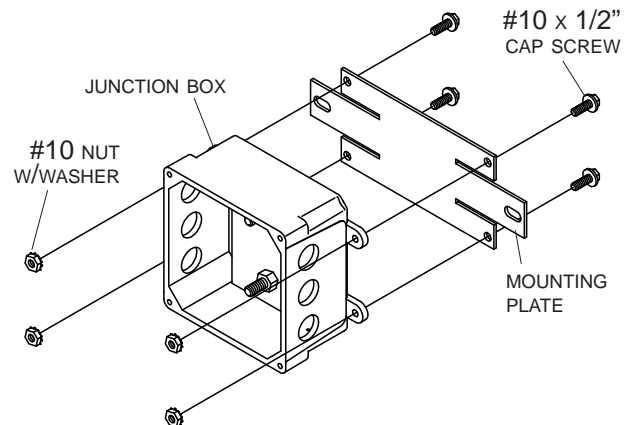
**STEP 1:** Insert 1/4" x 1" cap screws through holes in back plate and secure with hex nuts.



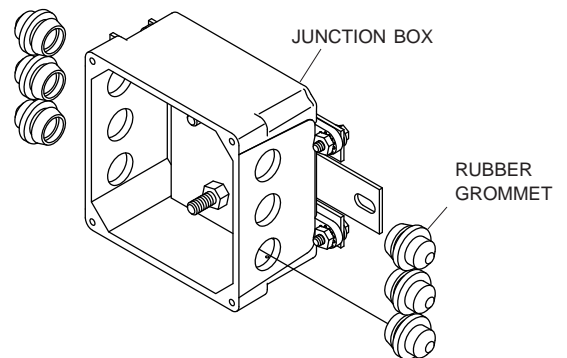
**STEP 2:** Place back plate loosely into junction box.



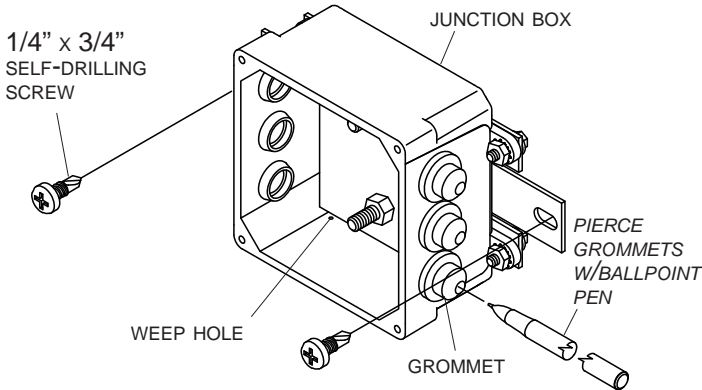
**STEP 3:** Fasten mounting plate to junction box with #10 x 1/2" cap screws and nut/washers.



**STEP 4:** Install rubber grommets into holes in junction box.



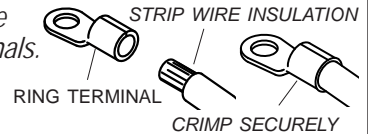
**STEP 5:** Determine best route for wiring and locate junction box in desired location. Align junction box so that weep holes are facing downward. If it is not possible to align weep holes downward, drill small holes (about .050") on box sidewall that faces downward. Using slots in junction box as a guide, mark and drill 3/16" holes. Fasten junction box to mounting surface with 1/4" x 3/4" self-drilling screws.



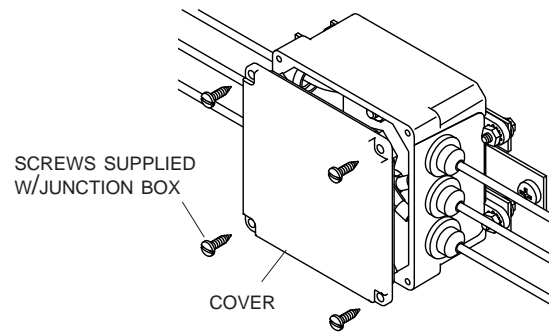
**STEP 6:** Pierce grommets with ball point pen so that terminal wires can be inserted through pierced holes.

**STEP 7:** Route wire through grommets into junction box. Crimp 1/4" ring terminals to wire ends, if needed. Place wires on appropriate posts - see wiring diagrams. Secure with hex nuts and lock washers.

**NOTE:** Strip only enough wire insulation to install ring terminals. Insert bare wire into ring terminals and crimp securely.

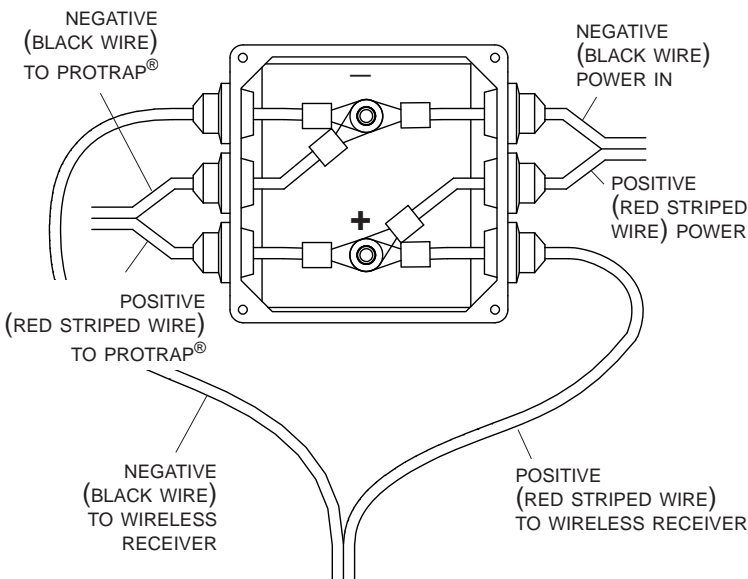


**STEP 8:** Fasten cover to junction box with supplied screws.

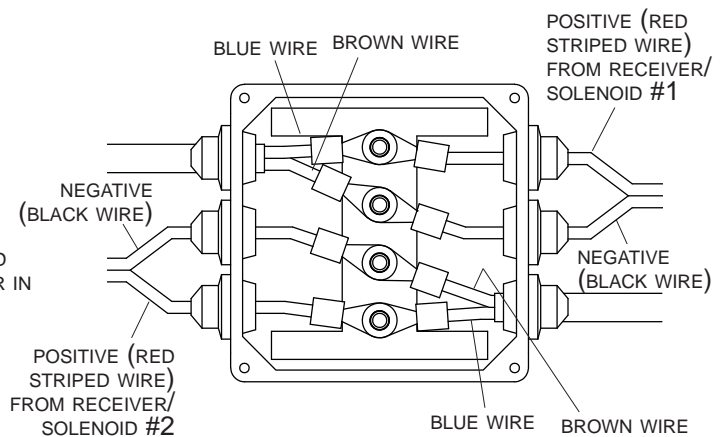


**WIRING DIAGRAMS**

**ELECTRIC TARP W/PROTRAPS**



**4-POST JUNCTION BOX**



**NOTE:** For wiring lead trailer to pup trailer, see lead trailer installation instructions.