



**TARP SYSTEMS & ACCESSORIES**

READ BEFORE INSTALLING

P/N 1120886 Rev. J



# **Wiring 4500 Series & Four ProTraps**

## **INSTALLATION INSTRUCTIONS**

2309 SHUR-LOK STREET • YANKTON, SD 57078-0713  
PHONE: 1-800-SHUR-LOK (1-800-474-8756) • FAX: 1-605-665-0501  
**www.SHURCO.com**

**SHOP ONLINE: [www.SHOPSHURCO.com](http://www.SHOPSHURCO.com)**

Scan QR Code

ORDER  
TERMS AND CONDITIONS



WARRANTY



PATENTS



**SHUR-CO<sup>®</sup>, LLC SERVICE AND DISTRIBUTION CENTERS**

**SHUR-CO<sup>®</sup> CORPORATE HQ**  
2309 Shur-Lok Street, Yankton  
**800-729-2969**  
Fax: 605-665-0501

**SHUR-CO<sup>®</sup> of FLORIDA**  
3353 SE Gran Park Way, Stuart  
**800-327-8287**  
Fax: 772-287-0431

**SHUR-CO<sup>®</sup> of CANADA**  
490 Elgin Street, Unit 2  
Brantford, Ontario N3S 7P8  
**800-265-0823**  
Fax: 519-751-3997

**SHUR-CO<sup>®</sup> of IDAHO**  
921 Garber Street, Caldwell  
**208-455-1046**  
Fax: 208-455-1046

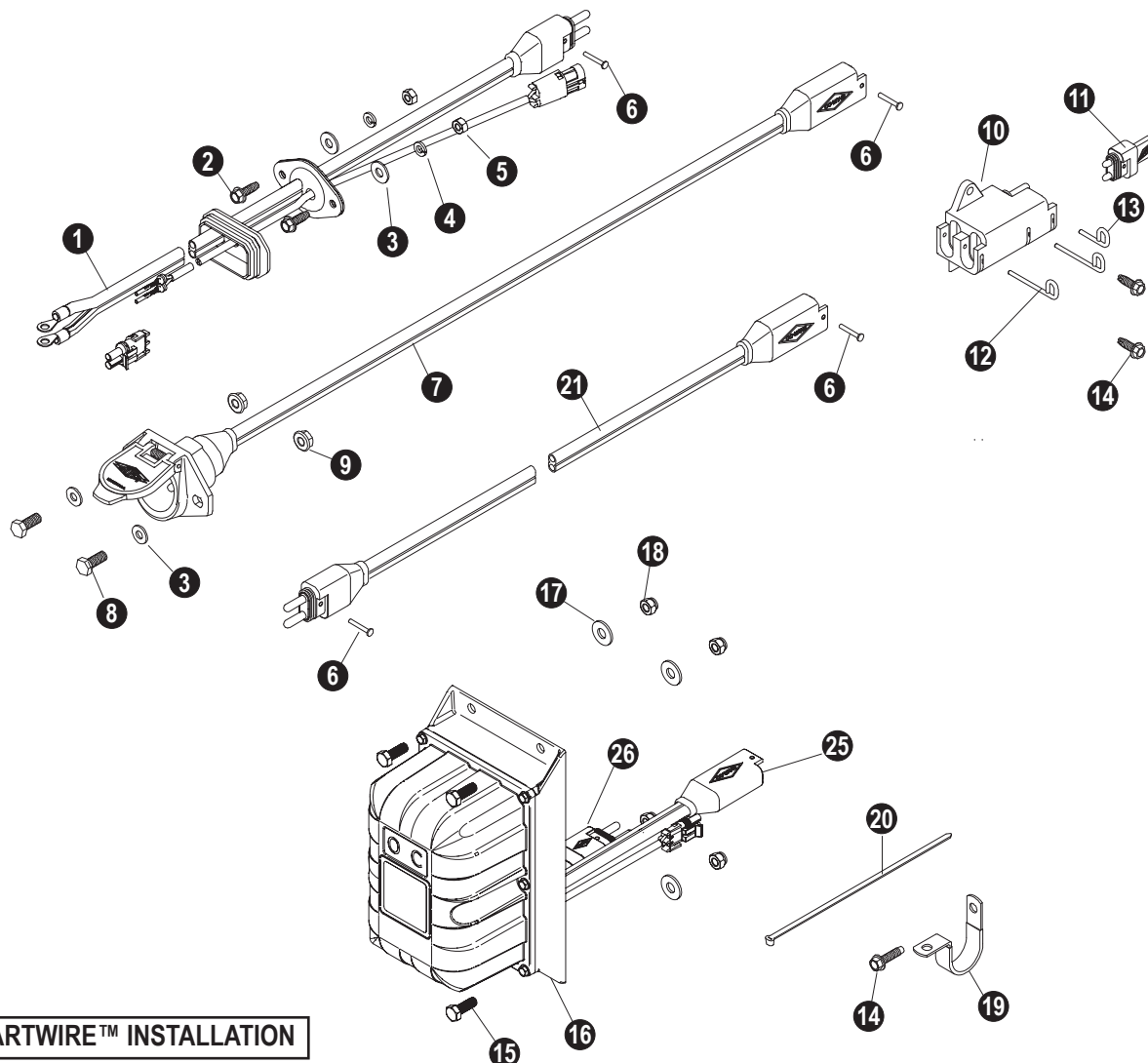
**SHUR-CO<sup>®</sup> of OHIO**  
4676 Lynn Road, Rootstown  
**866-356-0242**  
Fax: 330-297-5599

**SHUR-CO<sup>®</sup> of SOUTH DAKOTA**  
1212 N. Norbeck St., Vermillion, SD  
**605-658-1020**  
Fax: 605-658-1022

**SHUR-CO<sup>®</sup> of ILLINOIS**  
3993 E. Mueller Avenue, Decatur  
**866-356-0246**  
Fax: 217-877-8270

**SHUR-CO<sup>®</sup> of NORTH DAKOTA**  
1746 4th Avenue. NW, West Fargo  
**877-868-4488**  
Fax: 701-277-1284

**SHUR-CO<sup>®</sup> UK LIMITED**  
Unit 41, Rochester Airport Estate  
Laker Road  
Rochester, Kent ME1 3QX



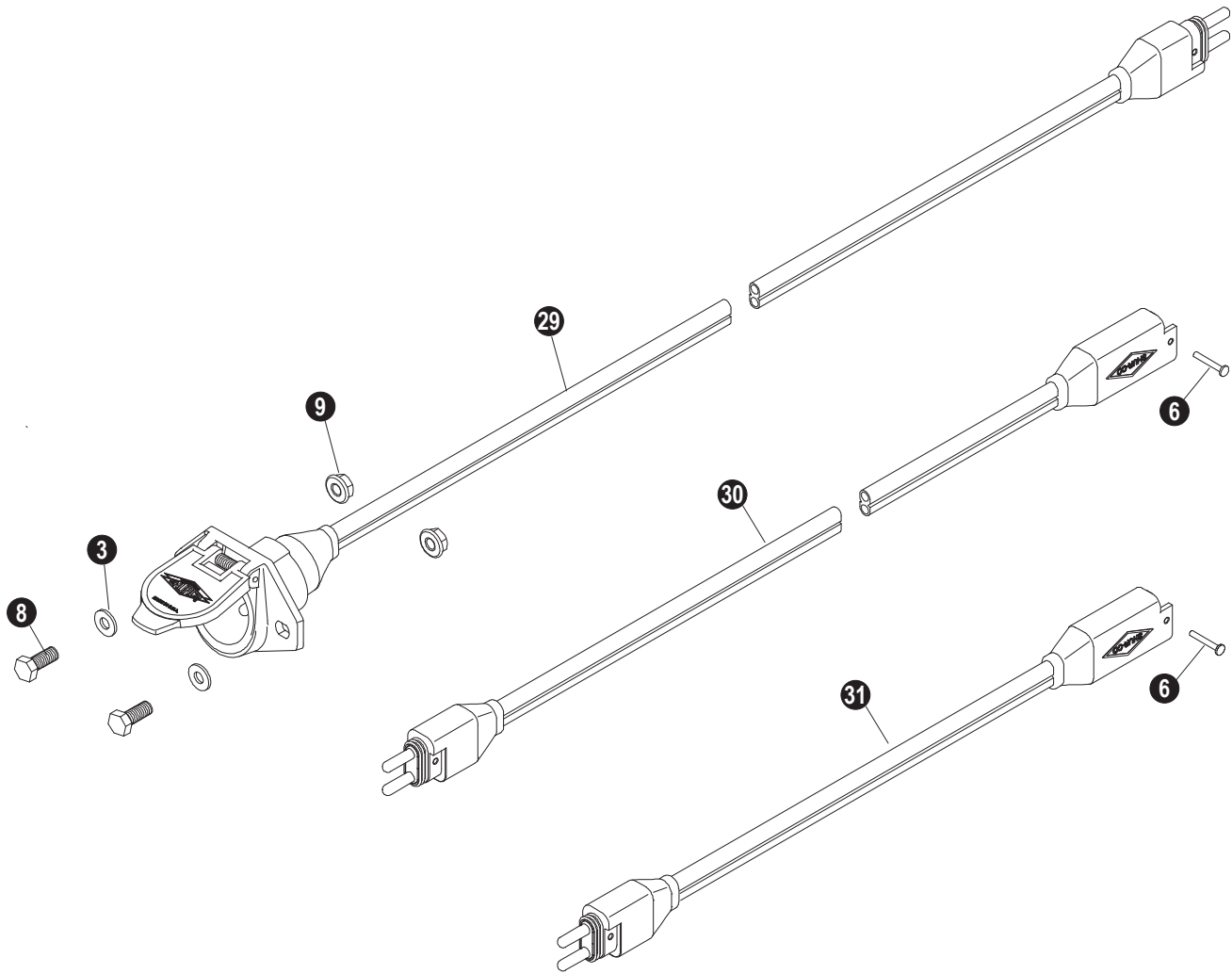
### SMARTWIRE™ INSTALLATION

This instruction sheet covers a variety of trailers, therefore locations for SMARTwire™ components shown here may need to vary slightly on your trailer. Mounting locations are critical because wire lengths cannot be altered. Mounting SMARTwire™ components as close as possible to locations shown will not only ensure quick and easy installation but also facilitate SMARTwire™ upgrades.

Item	Part #	Description
1.		SMARTwire™ - 6 Ga. - Plug - 9'-9"
2.	1700403	Self-Tapping Screw - 1/4" x 3/4"
3.	1700427	Flat Washer - 1/4"
4.	1700436	Lock Washer - 1/4"
5.	1700408	Hex Nut - 1/4"
6.	1704751	Harness Lock Pin - 1/4" x 7/8"
7.	1120670	SMARTwire™ Dual-Conductor Socket
8.	1701045	Cap Screw - 5/16" x 3/4"
9.	1704946	Flanged Top Lock Nut - 5/16"
10.	1704695	Harness Junction Block
11.	1704717	Wire Harness Rubber Plug
12.	1704696	Harness Lock Pin - Long
13.	1704711	Harness Lock Pin - Short
14.	1704338	Self-Tapping Screw - 1/4" x 1"
15.	1702926	Cap Screw - 5/16" x 7/8"
16.		ShurLink™ Receiver
17.	1700428	Flat Washer - 5/16"
18.	1700419	Lock Nut - 5/16"
19.	1702108	Wire Clip - 3/4"
20.		Cable Tie - 8"
21.	1704704	SMARTwire™ - 6 Ga. x 25' - Plug/Socket
25.	1120817	SMARTwire™ - 6 Ga. x 6' 3" - Socket
26.	1704705	SMARTwire™ - 6 Ga. x 2' 4" - Plug

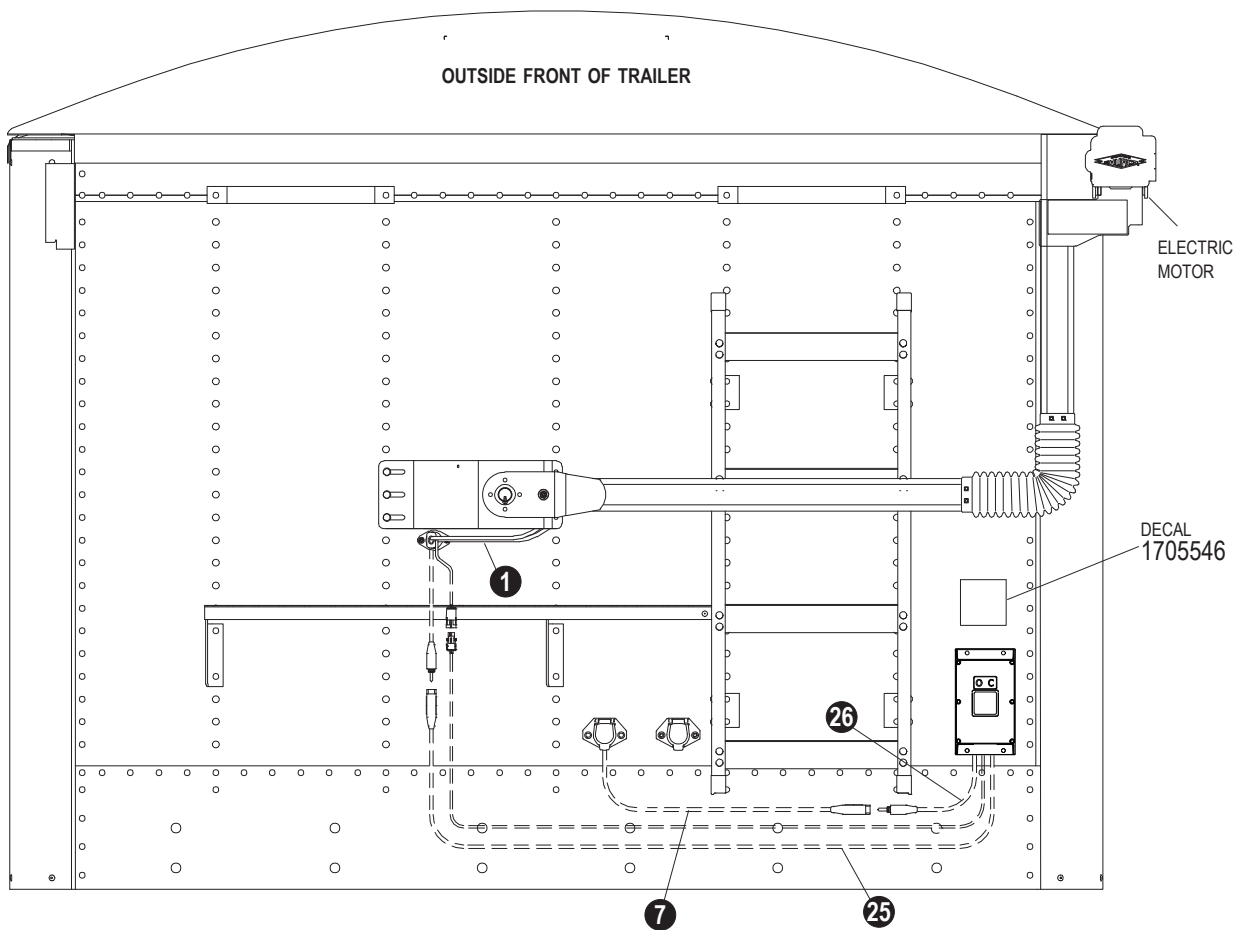
Item	Part #	Description
1.		SMARTwire™ - 6 Ga. - Plug - 9'-9"
2.	1700403	Self-Tapping Screw - 1/4" x 3/4"
3.	1700427	Flat Washer - 1/4"
4.	1700436	Lock Washer - 1/4"
5.	1700408	Hex Nut - 1/4"
6.	1704751	Harness Lock Pin - 1/4" x 7/8"
7.	1120670	SMARTwire™ Dual-Conductor Socket
8.	1701045	Cap Screw - 5/16" x 3/4"
9.	1704946	Flanged Top Lock Nut - 5/16"
10.	1704695	Harness Junction Block

Item	Part #	Description
11.	1704717	Wire Harness Rubber Plug
12.	1704696	Harness Lock Pin - Long
13.	1704711	Harness Lock Pin - Short
14.	1704338	Self-Tapping Screw - 1/4" x 1"
15.	1702926	Cap Screw - 5/16" x 7/8"
16.		ShurLink™ Receiver
17.	1700428	Flat Washer - 5/16"
18.	1700419	Lock Nut - 5/16"
19.	1702108	Wire Clip - 3/4"
20.		Cable Tie - 8"
21.	1704704	SMARTwire™ - 6 Ga. x 25' - Plug/Socket
25.	1120817	SMARTwire™ - 6 Ga. x 6' 3" - Socket
26.	1704705	SMARTwire™ - 6 Ga. x 2' 4" - Plug



#### LEAD TRAILER WIRING PARTS FOR SUPPLYING POWER TO REAR/PUP TRAILERS

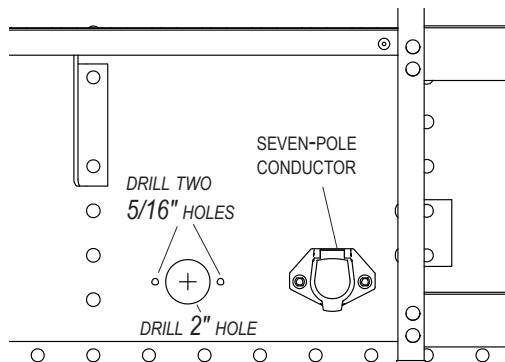
Item	Part #	Description
3.	1700427	Flat Washer - 1/4"
6.	1704751	Harness Lock Pin - 1/4" x 7/8"
8.	1701045	Cap Screw - 5/16" x 3/4"
9.	1704946	Flanged Top Lock Nut - 5/16"
29.	1122541	SMARTwire™ - 4 Ga. x 22' - Dual-Conductor Socket
	1122542	SMARTwire™ - 4 Ga. x 32' - Dual-Conductor Socket
	1122543	SMARTwire™ - 4 Ga. x 40' - Dual-Conductor Socket
30.	1704888	SMARTwire™ - 4 Ga. x 25' - Plug/Socket
31.	1704857	SMARTwire™ - 6 Ga. x 1' - Plug/Socket



**NOTE:** Wire lengths are predetermined. Before installing SMARTwire™ components, review and confirm wire routing so wires reach components with ample room for connection.

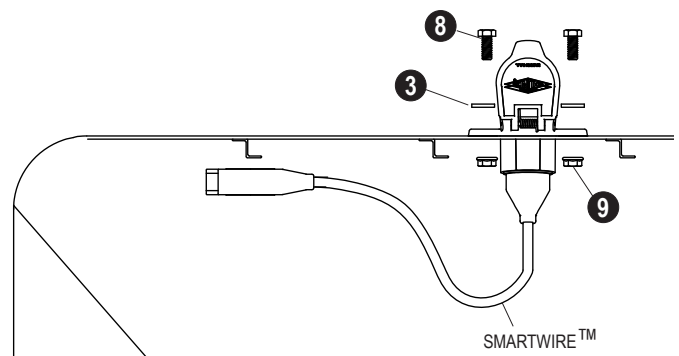
### DUAL-POLE CONDUCTOR SOCKET INSTALLATION

**STEP 1:** Locate dual-pole conductor socket near seven-pole conductor socket as shown. Determine location and drill 2 inch hole through trailer skin.



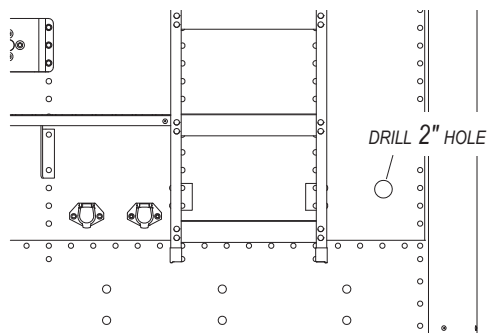
**STEP 2:** Align socket over 2 inch hole. Using holes in flanges on socket as guide, mark and drill two 5/16 inch holes.

**STEP 3:** Fasten conductor socket to trailer with cap screws (8), flat washers (3) and nuts (9).

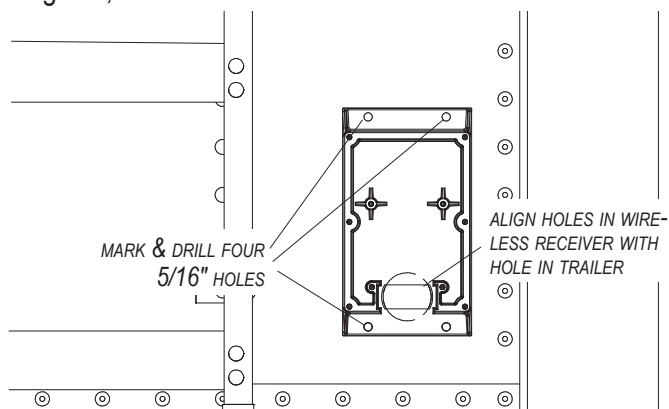


### SHUR-CO® WIRELESS RECEIVER INSTALLATION

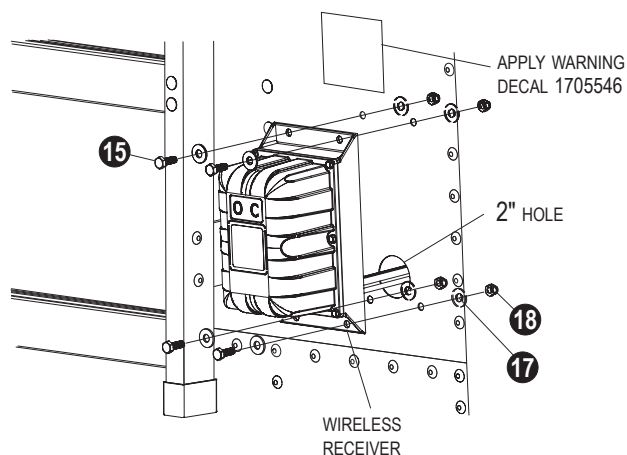
**STEP 1:** In order to clear travel area of front arm, locate Shur-Co® wireless receiver as low as possible on front of trailer. Determine location and drill 2 inch hole through trailer skin.



**STEP 2:** Align holes in wireless receiver over 2 inch hole in trailer as shown below. Using holes on flanges on receiver as guide, mark and drill four 5/16 inch holes as shown.

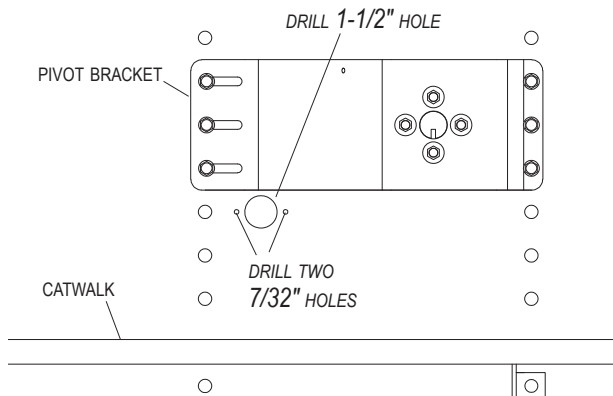


**STEP 3:** Align holes on wireless receiver with holes on trailer. Fasten receiver to trailer with cap screws (15), washers (17) and nuts (18). Apply warning decal P/N 1705546 above receiver in locations shown.



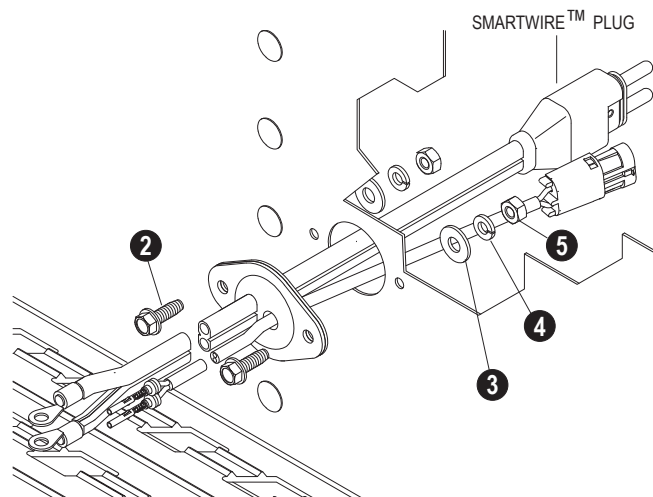
### ADAPTER PLUG INSTALLATION

**STEP 1:** Measure 11 inches horizontally from center line of trailer and 1 inch down from lower edge of pivot bracket. Mark and drill 1-1/2 inch hole through trailer skin.

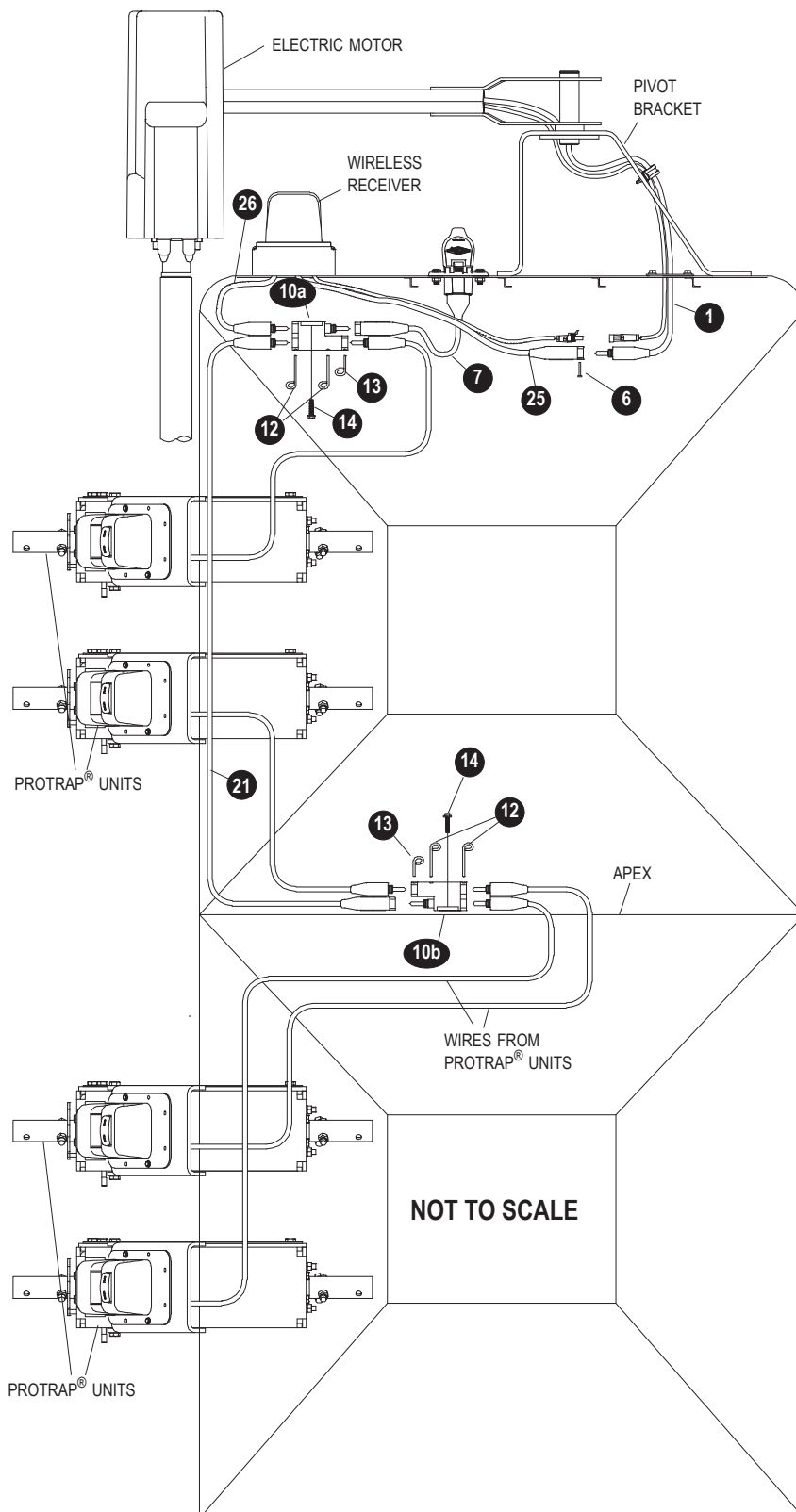


**STEP 2:** Align adapter plug with 1-1/2 inch hole. Using plug as guide, mark and drill two 7/32 inch holes as shown.

**STEP 3:** Fasten adapter plug to front of trailer with screws (2), flat washers (3), lock washers (4) and nuts (5).



## FRONT OF TRAILER



**NOTE:** Coat each connection with dielectric grease (P/N 1704378) to prevent corrosion.

**CAUTION**

**Do not fasten SMARTwire™ components to trailer through hopper walls.**

**NOTE:** If wiring lead/pup trailer, review page 6 before proceeding.

## FRONT OF TRAILER

**STEP 1:** Route SMARTwire™ (25) to from wireless receiver to adapter plug (1). Connect encoder wire ends. Connect wire to adapter plug and secure with lock pin (6).

**STEP 2:** To determine location of front junction block (10a), route SMARTwire (7) and (26) to location where wires reach. Mount junction block at this location. Using holes in junction block as guide, mark and drill two 7/32 inch holes.

**STEP 3:** Fasten junction block (10a) to trailer with screws (14).

**STEP 4:** Connect SMARTwires (7), (21), (26) and wire from ProTrap® unit to junction block (10a). Secure connections with lock pins (12) and (13).

**STEP 5:** Route SMARTwire™ (21) from front to apex of trailer.

## APEX OF TRAILER

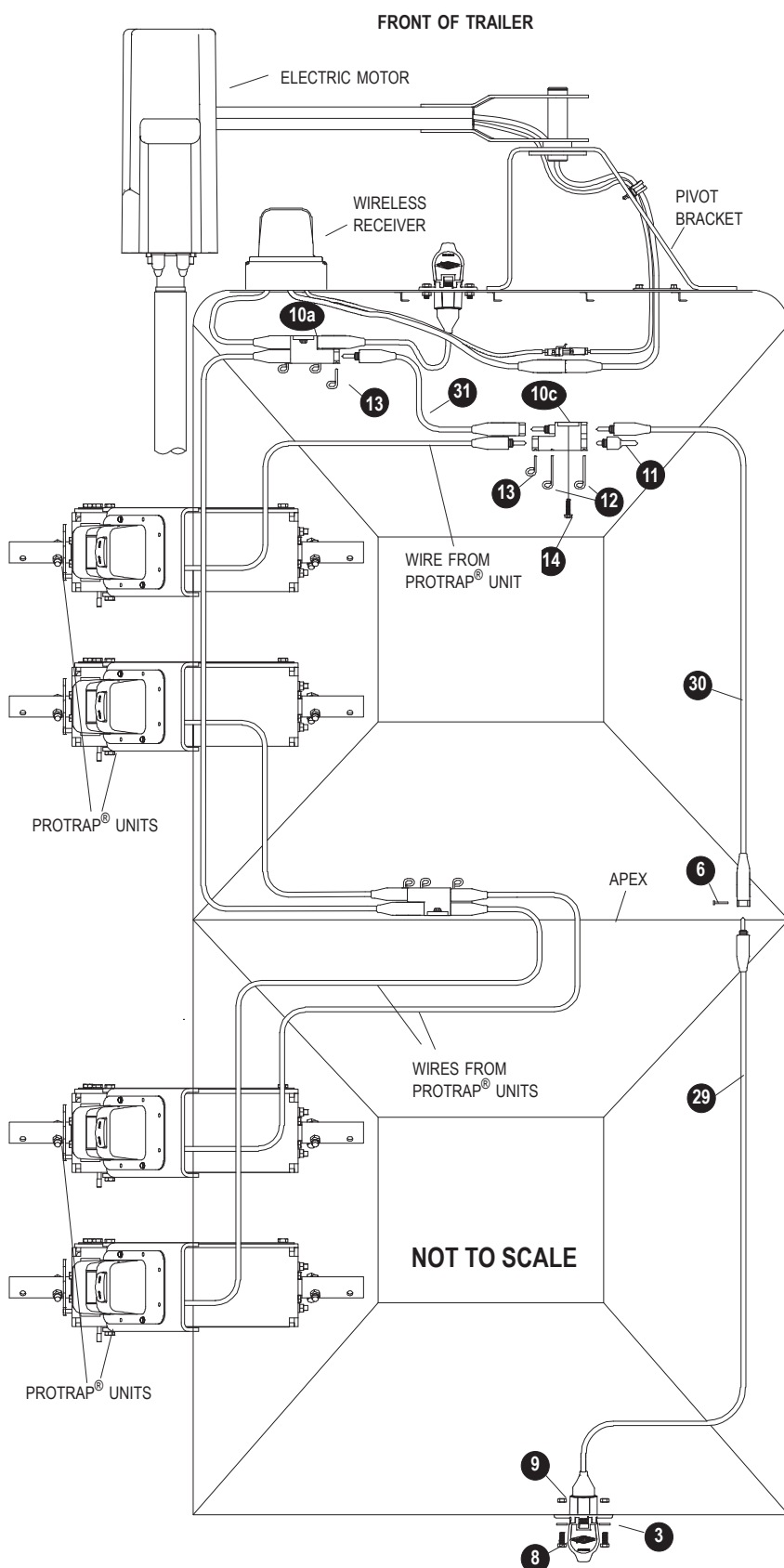
**STEP 6:** To determine location of second junction block, route SMARTwire (21) and SMARTwires from ProTrap® units to location near apex of trailer where wires reach. Mount junction block (10b) at this location. Using holes in junction block as guide, mark and drill two 7/32 inch holes.

**STEP 7:** Fasten junction block (10b) to trailer with screws (14).

**STEP 8:** Connect SMARTwires (21) and wires from ProTrap® units to junction block (10b) at apex of trailer. Secure all connections with lock pins (12) and (13).

**STEP 9:** Secure all wires to trailer with cable clips (20) and screws (14). If needed, use cable ties (21).

**NOTE:** For lead/pup trailer configurations, continue on next page.



**NOTE:** Coat each connection with dielectric grease (P/N 1704378) to prevent corrosion.

## CAUTION

**Do not fasten SMARTwire™ components to trailer through hopper walls.**

### FRONT OF TRAILER

**STEP 1:** Remove lock pin (13) and SMARTwire™ from junction block (10a). Connect SMARTwire™ (31) to junction block (10a) and secure with lock pin (13).

**STEP 2:** To determine location for junction block (10c), route SMARTwires from front ProTrap® unit and (31) to where wires meet on front of trailer. Position junction block (10c) at this location. Using holes in junction block as guide, mark and drill two 7/32 inch holes.

**STEP 3:** Fasten junction block (10c) to trailer with screws (14).

**STEP 4:** Connect SMARTwires (31), and (30) to junction block (10c), then insert plug (11). Secure with lock pins (12) and (13).

**STEP 5:** Route SMARTwire™ (30) towards rear of trailer.

### REAR OF TRAILER

**STEP 6:** To determine location for conductor socket (29) on rear of trailer, route SMARTwire™ (30) and SMARTwire™ from conductor socket (29) to location near middle of trailer where wires reach. Mount conductor socket at this location.

**STEP 7:** Follow STEPS 1 to 3 on page 3 to install conductor socket (29).

### MIDDLE OF TRAILER

**STEP 8:** Connect SMARTwires (30) and (29). Secure with lock pin (6).

**STEP 9:** Secure all wires to trailer with cable clips (20) and screws (14). If needed, use cable ties (21).







---

2309 SHUR-LOK STREET • YANKTON, SD 57078-0713  
PHONE: 1-800-SHUR-LOK (800-474-8756) • FAX: 1-605-665-0501  
**[www.SHURCO.com](http://www.SHURCO.com)**

---