



4500 Series Combination Wiring

INSTALLATION INSTRUCTIONS

Single ProTrap®


PHONE: 1.866.748.7435 | FAX: 1.605.665.0501

2309 SHURLOCK STREET | YANKTON, SD 57078-0713

SHURCO.com



SAFETY INSTRUCTIONS

At Shurco, your safety is our top priority. Please read and thoroughly understand all instructions before operating all equipment. Failure to READ AND FOLLOW INSTRUCTIONS may result in system failure, property damage, or personal injury. Pay close attention to warnings, cautions, and operating instructions. The hazard symbol  alerts users of potentially hazardous conditions, and is followed by Caution, Warning, or Danger messages to indicate risk:

- **Danger**: (red) Indicates an imminently hazardous situation that, if not avoided, WILL result in death or serious injury.
- **Warning**: (orange) Indicates a potentially hazardous situation that, if not avoided, COULD result in death or serious injury.
- **Caution**: (yellow) Indicates a potentially hazardous situation that, if not avoided, MAY result in minor or moderate injury, or damage to the system.
- **Notice**: (blue) Indicates operational notes or other essential information without addressing safety.

Regularly inspect equipment to ensure proper performance. Always repair or replace worn or damaged parts immediately to maintain safety. Safety decals are placed at critical locations on equipment. Keep these decals clean and legible at all times. Replace any decal that is worn, damaged, painted over or otherwise unreadable. Replacement decals can be obtained by your local Shurco dealer.

- Always wear safety glasses during installation and operation.
- Stay clear of moving parts.
- No other use of Shurco equipment is authorized, except as designed.

SHUR-CO, LLC TERMS OF SERVICE

ORDER
TERMS AND CONDITIONS



WARRANTY



PATENTS



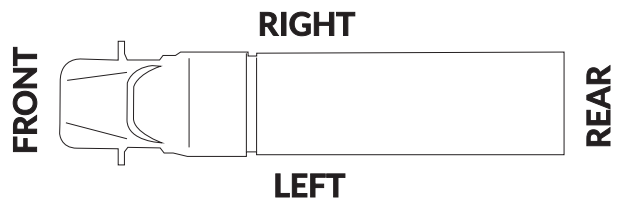
QUESTIONS?

CALL OUR HELP LINE:

1-866-748-7435

MONDAY-FRIDAY
8 AM-5 PM CENTRAL TIME

VEHICLE ORIENTATION



⚠ WARNING

Failure to disconnect power before performing wiring may result in equipment damage, serious injury, or death.

- Disconnect power before performing any wiring or service.
- This installation instructions is a supplement; follow all warnings, cautions, and procedures in the owner's manual.

NOTICE: This instruction sheet is supplied with a variety of trailer models, therefore the locations for the SMARTwire components shown here may vary slightly on your trailer. Mounting locations are critical because wire lengths cannot be altered. Mount SMARTwire components as close as possible to the locations shown.

⚠ CAUTION

- Do not cut molded SMARTwire ends. Molded SMARTwire ends are designed with sealed connections to prevent corrosion; cutting the wire may lead to operational problems.
- Bind excess wire with cable ties to prevent loose wire entanglement.

Item	Part #	Description
1.		Flex Arm SMARTwire™ - 6 Ga. - Plug - 10'-9" w/Encoder Wire
6.	1704751	Harness Lock Pin - 1/4" x 7/8"
7.	1120670	SMARTwire™ Dual-Conductor Socket
10.	1704695	Harness Junction Block
11.	1704717	Wire Harness Rubber Plug
12.	1704696	Harness Lock Pin - Long
13.	1704711	Harness Lock Pin - Short
14.	1704338	Self-Tapping Screw - 1/4" x 1"
16.		ShurLink™ Receiver
19.	1702108	Wire Clip - 3/4"
20.	1703231	Cable Tie - 8"
21.	1704704	SMARTwire™ Socket x Plug - 6 Ga. x 25'
25.	1120817	SMARTwire™ Socket x 1/4" Terminal - 6 Ga. x 6'3"
26.	1704705	SMARTwire™ Plug x 1/4" Terminal - 6 Ga. x 2'4"

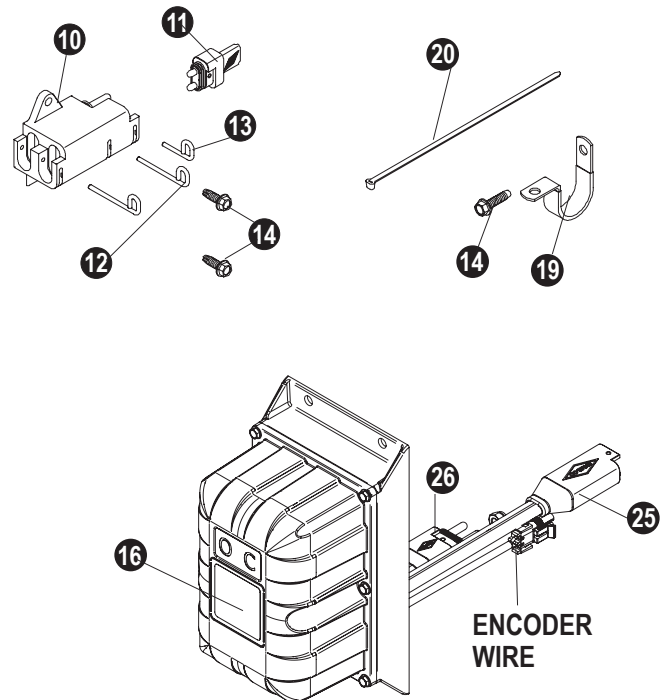
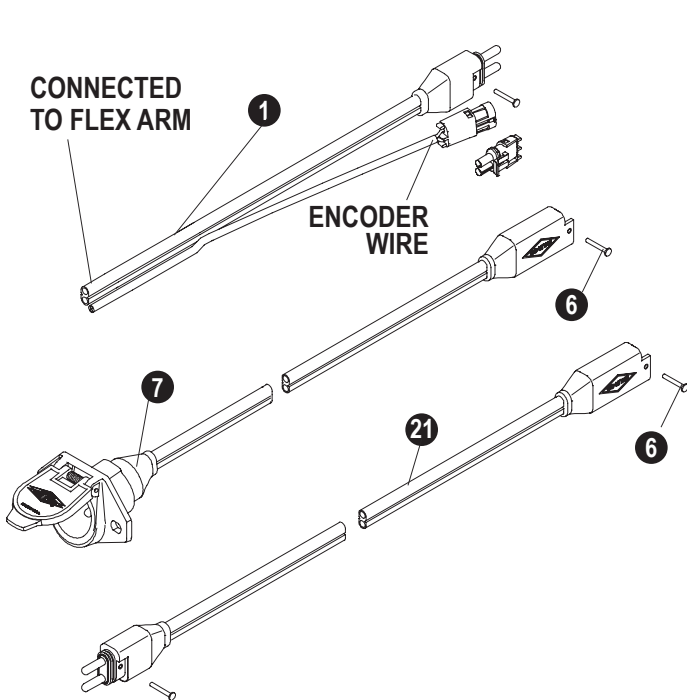
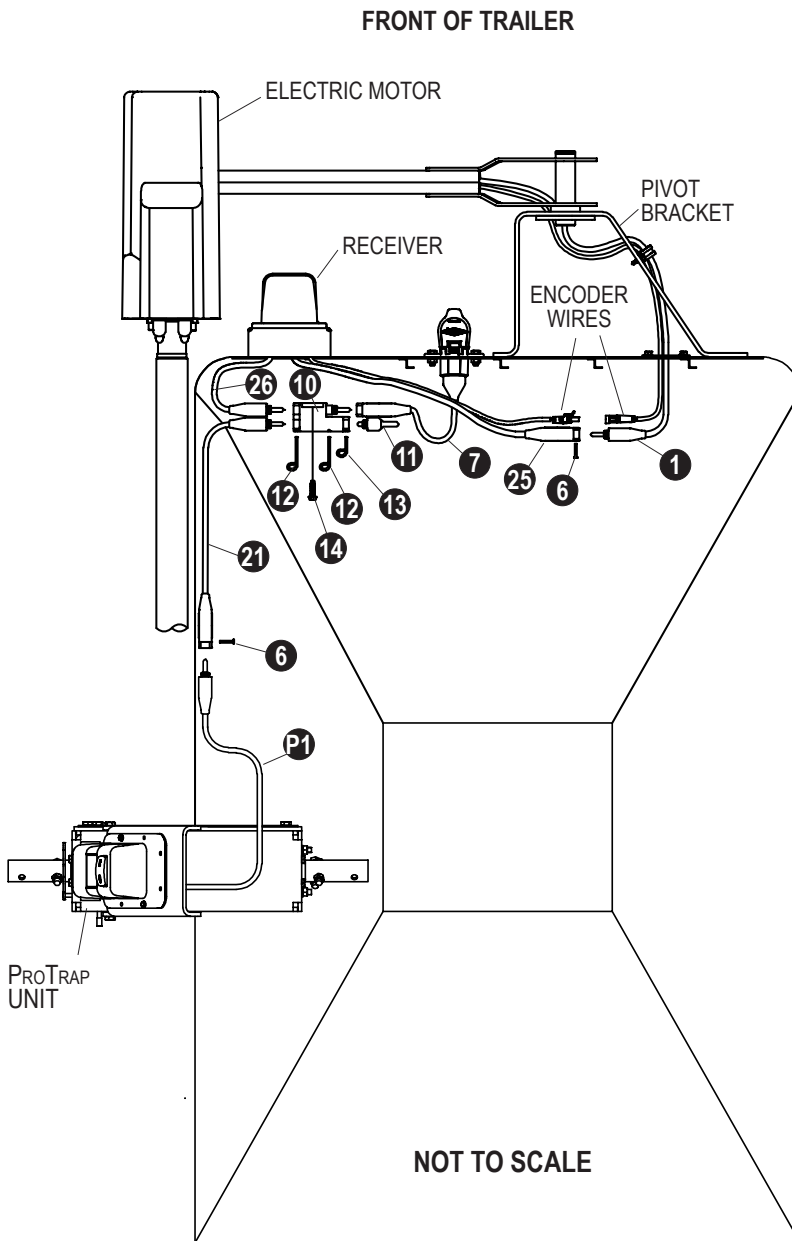


IMAGE 101

NOTICE: Coat each connection with dielectric grease (P/N 1704378) to prevent corrosion.

CAUTION

Do not fasten SMARTwire components to the trailer through the hopper walls. Doing so may damage the hopper walls or compromise system performance.



STEP 1: Route SMARTwire (25) from the receiver to the flex arm adapter plug (1). Connect encoder wire ends. Connect wire (25) and (1) and secure with lock pin (6).

STEP 2: To determine location of front junction block, route SMARTwires (7) and (26) to a location where wires reach. Mount junction block (10) at this location. Using the holes in junction block as a guide, mark and drill two 7/32-inch holes.

STEP 3: Fasten junction block (10) to the trailer with screws (14).

STEP 4: Connect SMARTwires (7), (21) and (26) to junction block (10). Insert plug (11) into the remaining socket. Secure connections with lock pins (12) and (13).

STEP 5: Route SMARTwire (21) from the front of trailer toward the ProTrap unit.

STEP 6: Connect SMARTwire (21) and ProTrap wire (P1). Secure them with lock pin (6).

STEP 7: Secure all wires to the trailer with wire clips (19) and screws (14). If needed, use cable ties (20).

NOTICE: For lead/pup trailer configurations, continue on next page.

IMAGE 102

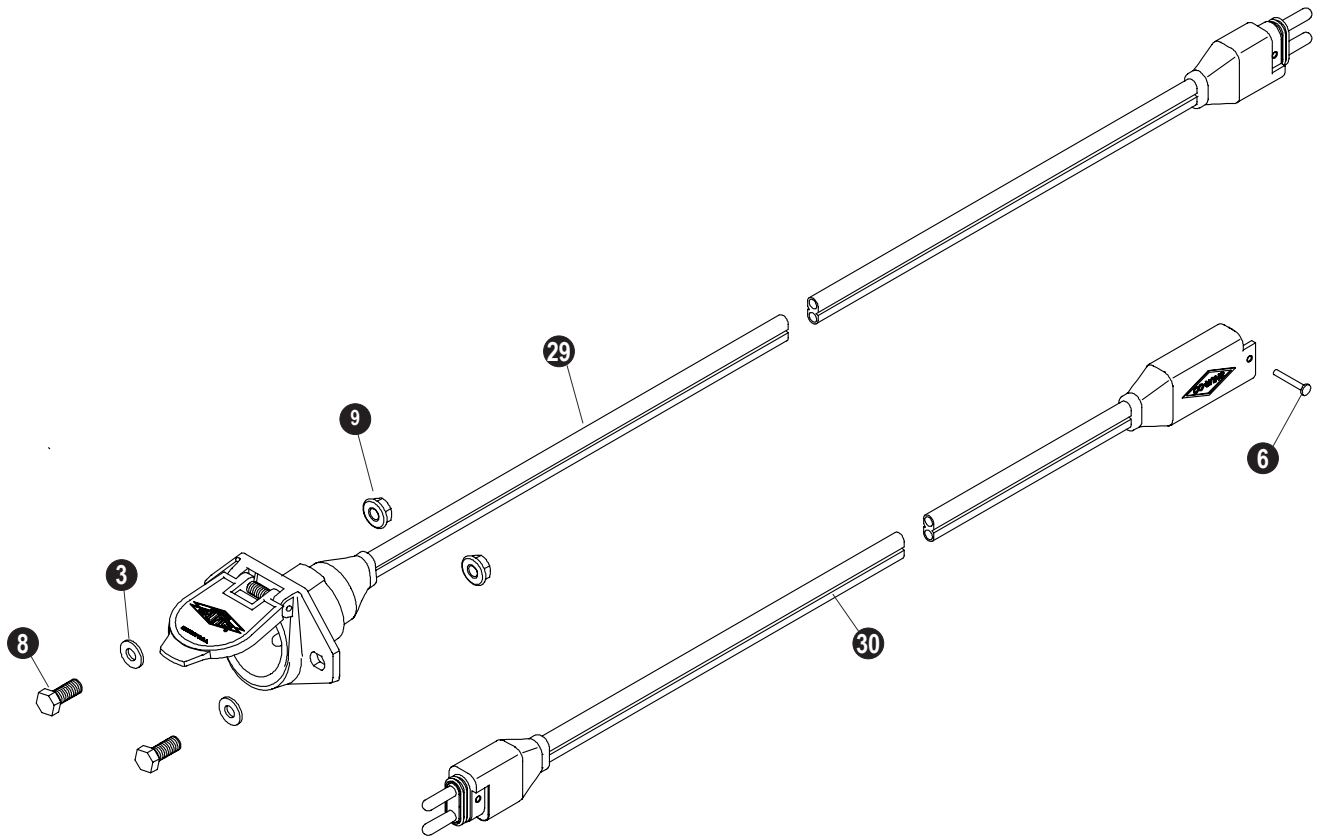


IMAGE 103

**LEAD TRAILER WIRING PARTS FOR SUPPLYING
POWER TO REAR/PUP TRAILERS**

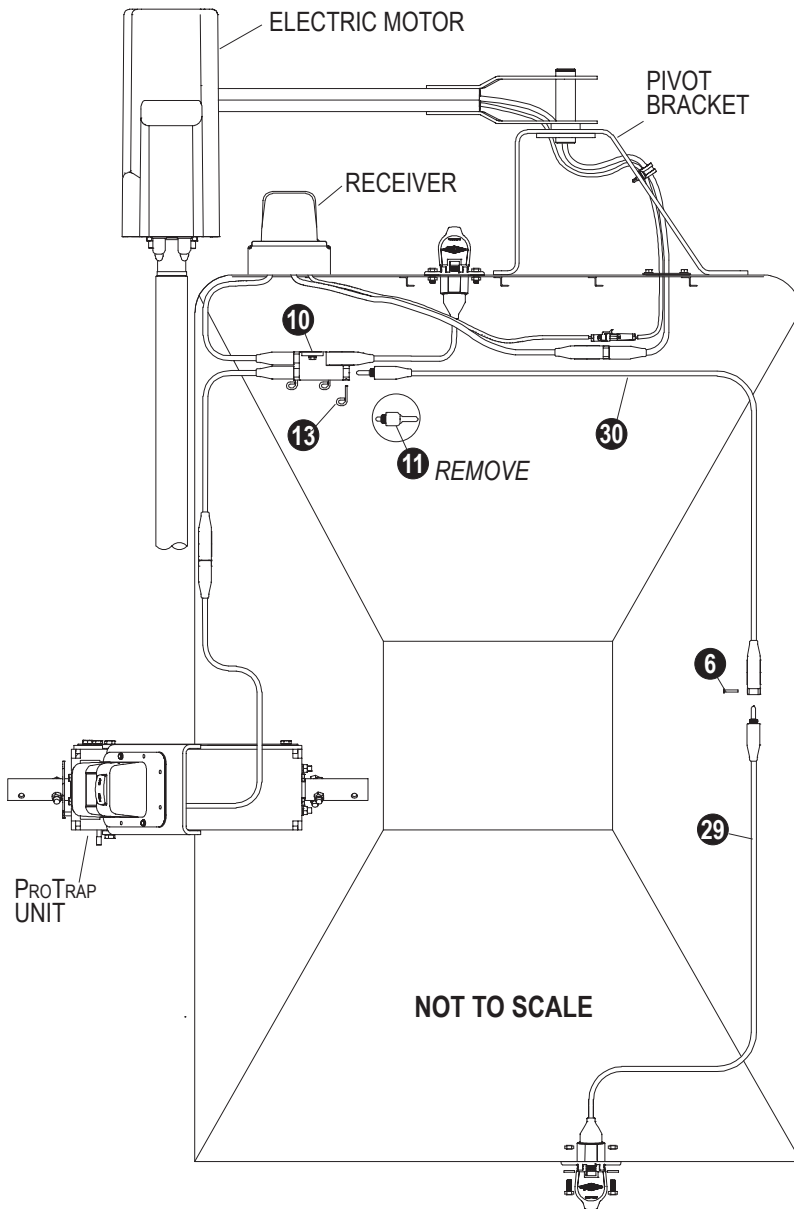
Item	Part #	Description
3.	1700427	Flat Washer - 1/4"
6.	1704751	Harness Lock Pin - 1/4" x 7/8"
8.	1701045	Cap Screw - 5/16" x 3/4"
9.	1704946	Flanged Top Lock Nut - 5/16"
29.	1122541	SMARTwire™ Dual-Cond Socket x Plug - 4 Ga. x 22'
	1122542	SMARTwire™ Dual-Cond Socket x Plug - 4 Ga. x 32'
	1122543	SMARTwire™ Dual-Cond Socket x Plug - 4 Ga. x 40'
30.	1704888	SMARTwire™ Socket x Plug - 4 Ga. x 25'

NOTICE: Complete all wiring shown in the first schematic (page 4) before proceeding with pup wiring.

NOTICE: Coat each connection with dielectric grease (P/N 1704378) to prevent corrosion.

CAUTION
Do not fasten SMARTwire components to the trailer through the hopper walls. Doing so may damage the hopper walls or compromise system performance.

FRONT OF TRAILER



FRONT OF TRAILER

STEP 1: Remove lock pin (13) and plug (11) from junction block (10). Connect SMARTwire (30) to junction block (10) and secure with lock pin (13).

STEP 2: Route SMARTwire (30) towards the rear of the trailer.

REAR OF TRAILER

STEP 3: To determine the location for conductor socket (29) on the rear of trailer, route SMARTwire (30) and the SMARTwire from conductor socket (29) to a location near the middle of the trailer where wires reach. Mount the conductor socket at this location.

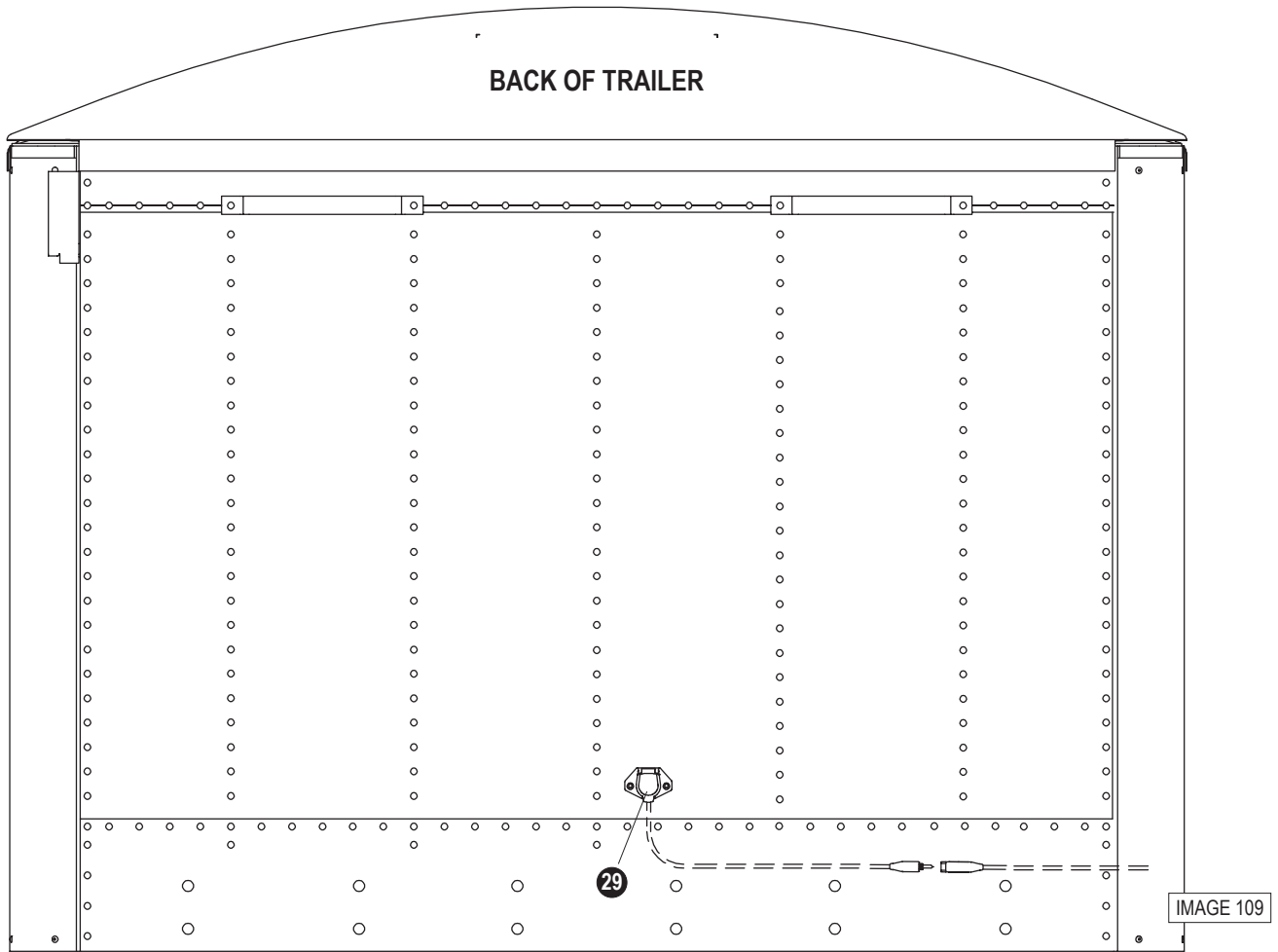
STEP 4: Follow STEPS 1 to 3 on page 7 to install conductor socket (29).

MIDDLE OF TRAILER

STEP 5: Connect SMARTwires (30) and (29). Secure them with lock pin (6).

STEP 6: Secure all wires to the trailer with wire clips (19) and screws (14). If needed, use cable ties (20).

IMAGE 104



NOTICE: Wire lengths are predetermined. Before installing SMARTwire components, review and confirm wire routing so that wires will reach components with ample room for connection.

DUAL-POLE CONDUCTOR SOCKET INSTALLATION

STEP 1: Locate the dual-pole conductor socket in the center of the trailer. Determine location and drill 2-inch hole through trailer skin.

STEP 2: Align socket over 2-inch hole. Using holes in flanges on socket as a guide, mark and drill two 5/16" holes.

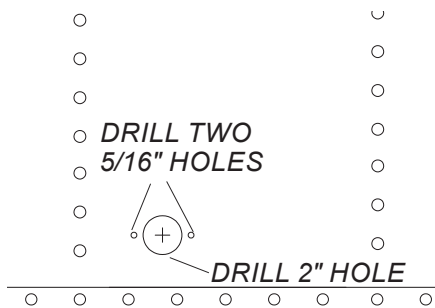


IMAGE 111

STEP 3: Fasten conductor socket (29) to trailer with two cap screws (8), flat washers (3) and nuts (9).

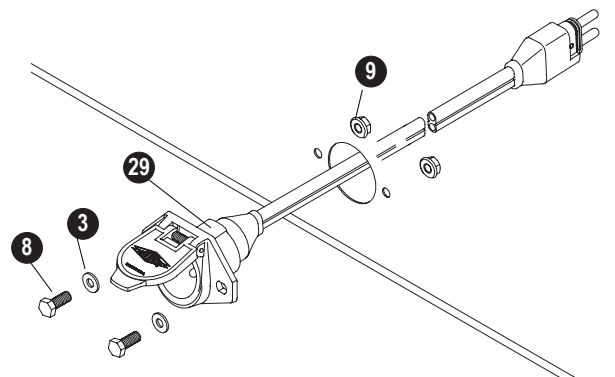


IMAGE 113

2309 SHURLOCK STREET | YANKTON, SD 57078-0713
PHONE: 1.866.748.7435 | FAX: 1.605.665.0501
SHURCO.com
