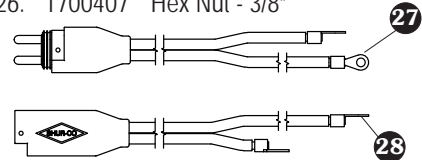
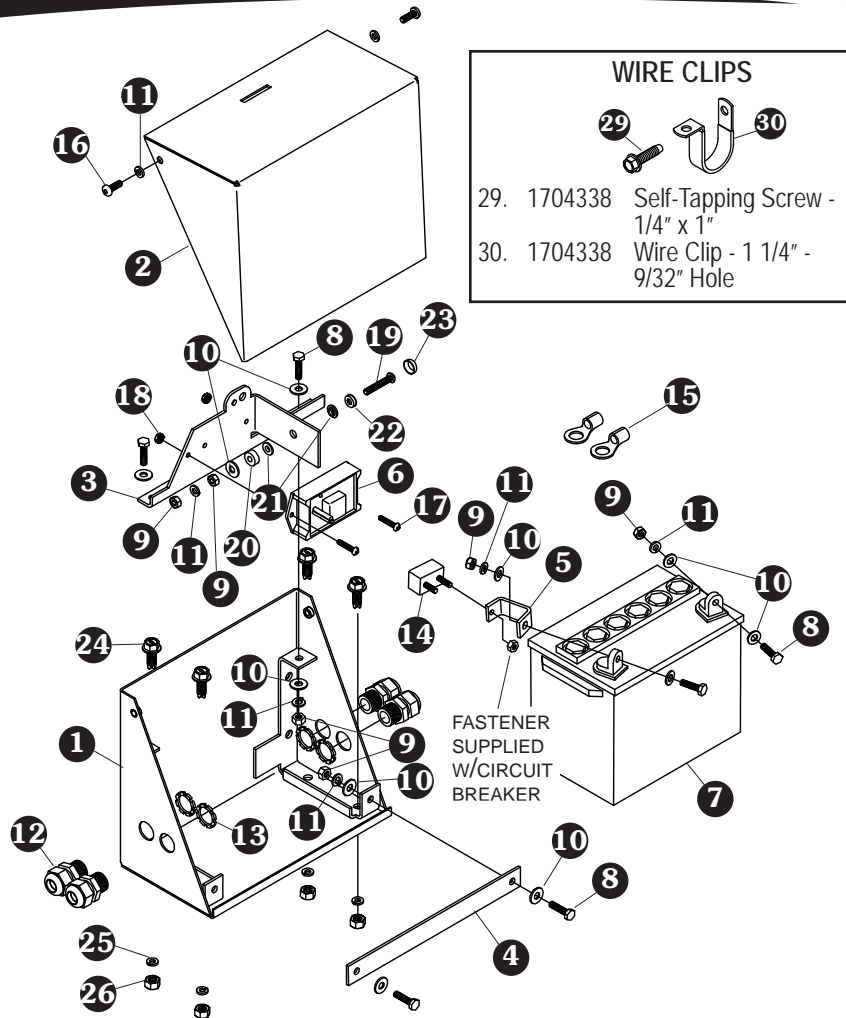


Item	Part #	Description
1.	1119783	Battery Box Bottom - Trickle
2.	1117734	Battery Box Top
3.	1117740	Battery Box Hold-Down Bracket
4.	1117739	Battery Box Front Bracket
5.	1117741	Battery Clip
6.	1704618	Battery Charging Module
7.	1704161	Solar Gel Battery
8.	1700381	Cap Screw - 1/4" x 1"
9.	1700408	Hex Nut - 1/4"
10.	1700427	Flat Washer - 1/4"
11.	1700436	Lock Washer - 1/4"
12.	1704152	Dome Nut - 1/2"
13.	1704187	Lock Nut - 1/2"
14.	1704354	Modified-Reset Circuit Breaker - 40 Amp
15.	1702707	Ring Terminal - 6 Ga. x 1/4" Stud
16.	1703327	Button Hd. Cap Screw - 1/4" x 5/8"
17.	1702654	Round Hd. Machine Screw - #10 x 1"
18.	1702653	Nut/Machine Screw w/Washer - #10
19.	1704238	Button Hd. Cap Screw - 1/4" x 1 1/2"
20.	1118250	Plastic Washer - Orange
21.	1704263	Nylon Shoulder Washer - 1/4"
22.	1704310	Flat Bottom Washer - 1/4"
23.	1704311	Snap-Cap - 12-12 Black
24.	1700400	Self-Tapping Screw - 3/8" x 1"
25.	1700434	Lock Washer - 3/8"
26.	1700407	Hex Nut - 3/8"

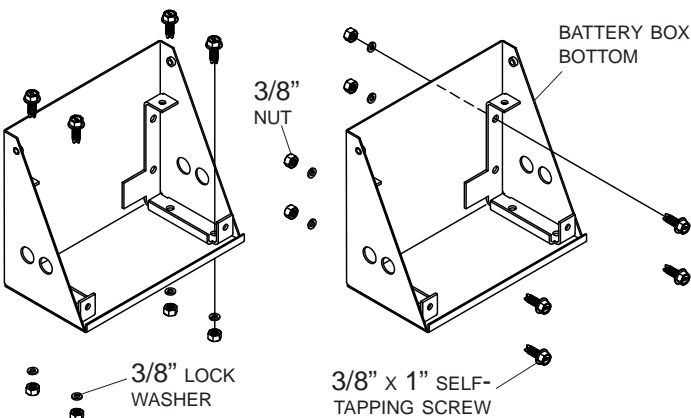


Item	Part #	Description
27.	1121227	SMARTwire™ 6 Ga. - Plug - 4' Trickle
28.	1121228	SMARTwire™ 6 Ga. - Socket - 12' Trickle



BATTERY BOX BOTTOM

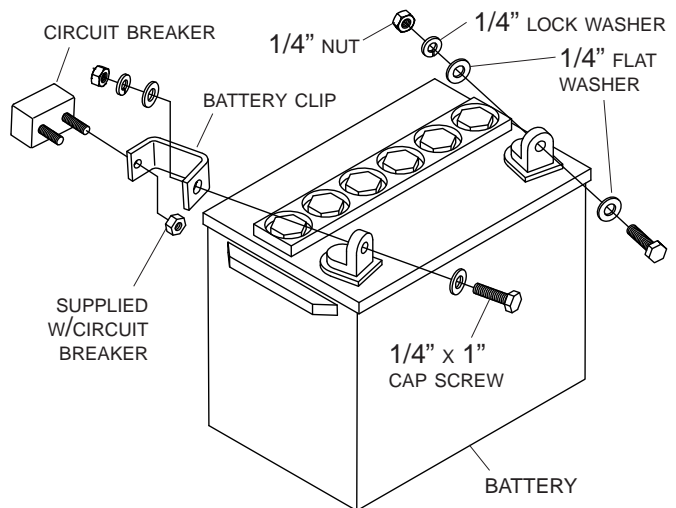
STEP 1: Using either bottom holes or back holes in battery box bottom as a guide, mark hole locations on trailer. Drill 5/16" holes and fasten battery box bottom to trailer with 3/8" x 1" self-tapping screws, lock washers and nuts.



NOTE: Install backer plate if trailer wall is less than 1/8" thick.

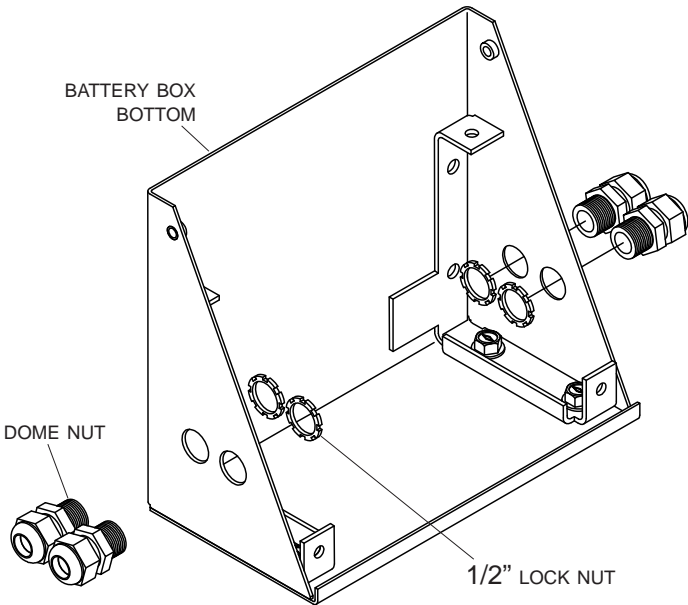
BATTERY CLIP & CIRCUIT BREAKER

STEP 2: Fasten battery clip and circuit breaker to battery with 1/4" cap screws, flat washers, lock washers and nuts as shown. Fasten circuit breaker with nut provided.



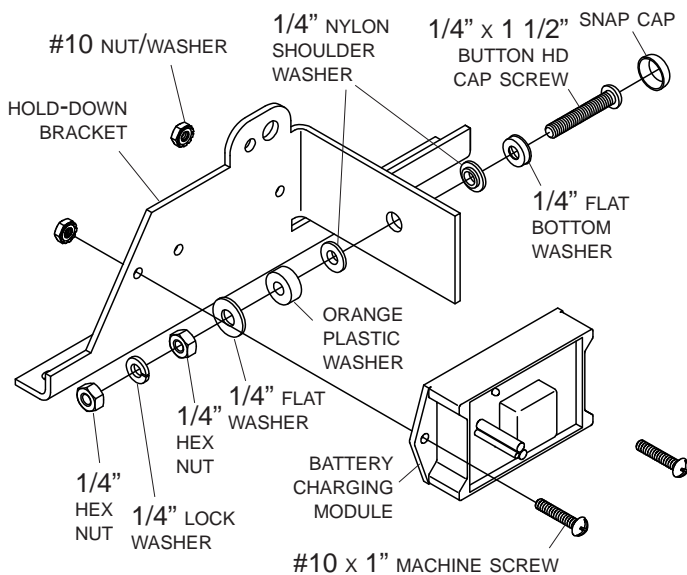
DOMES NUTS & HOLD-DOWN BRACKETS

STEP 3: Secure dome nut strain reliefs to battery box bottom with 1/2" lock nuts.



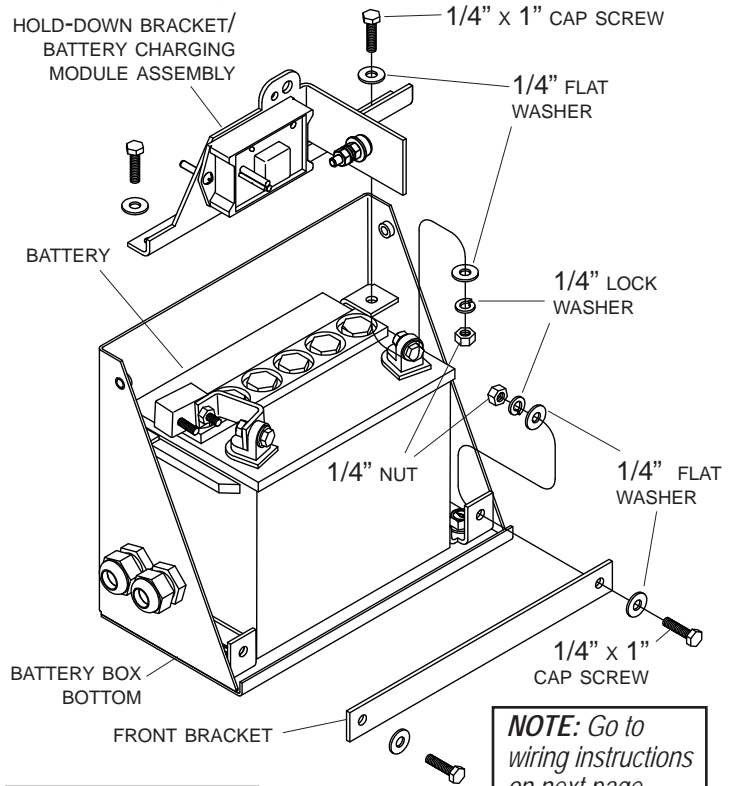
BATTERY CHARGING MODULE

STEP 4: Fasten battery charging module to hold-down bracket with #10 x 1" machine screws and nut/washers. Install 1/4" x 1 1/2" button head cap screw, flat bottom washer, shoulder washers, orange plastic washer, flat washer, hex nut, lock washer, second hex nut and snap cap as shown.



BATTERY & BRACKETS

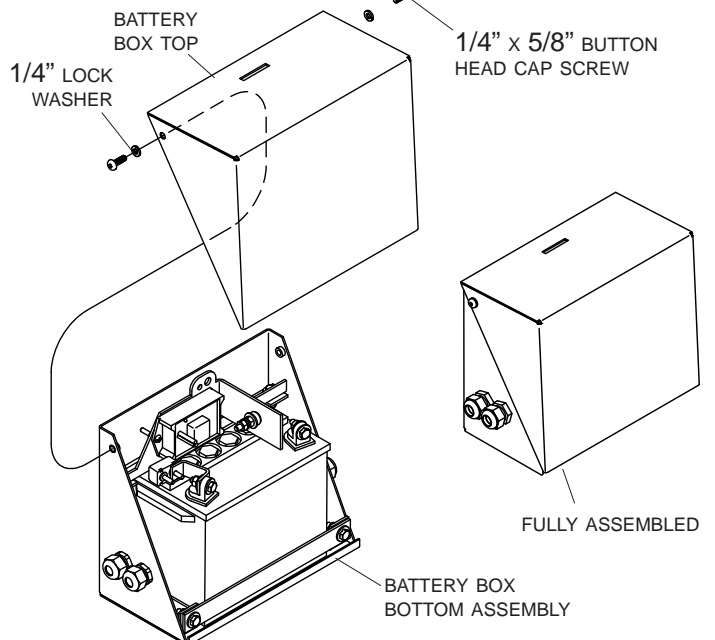
STEP 5: Place battery in battery box bottom. Install hold-down bracket and front bracket with 1/4" x 1" cap screws, flat washers, lock washers and nuts.

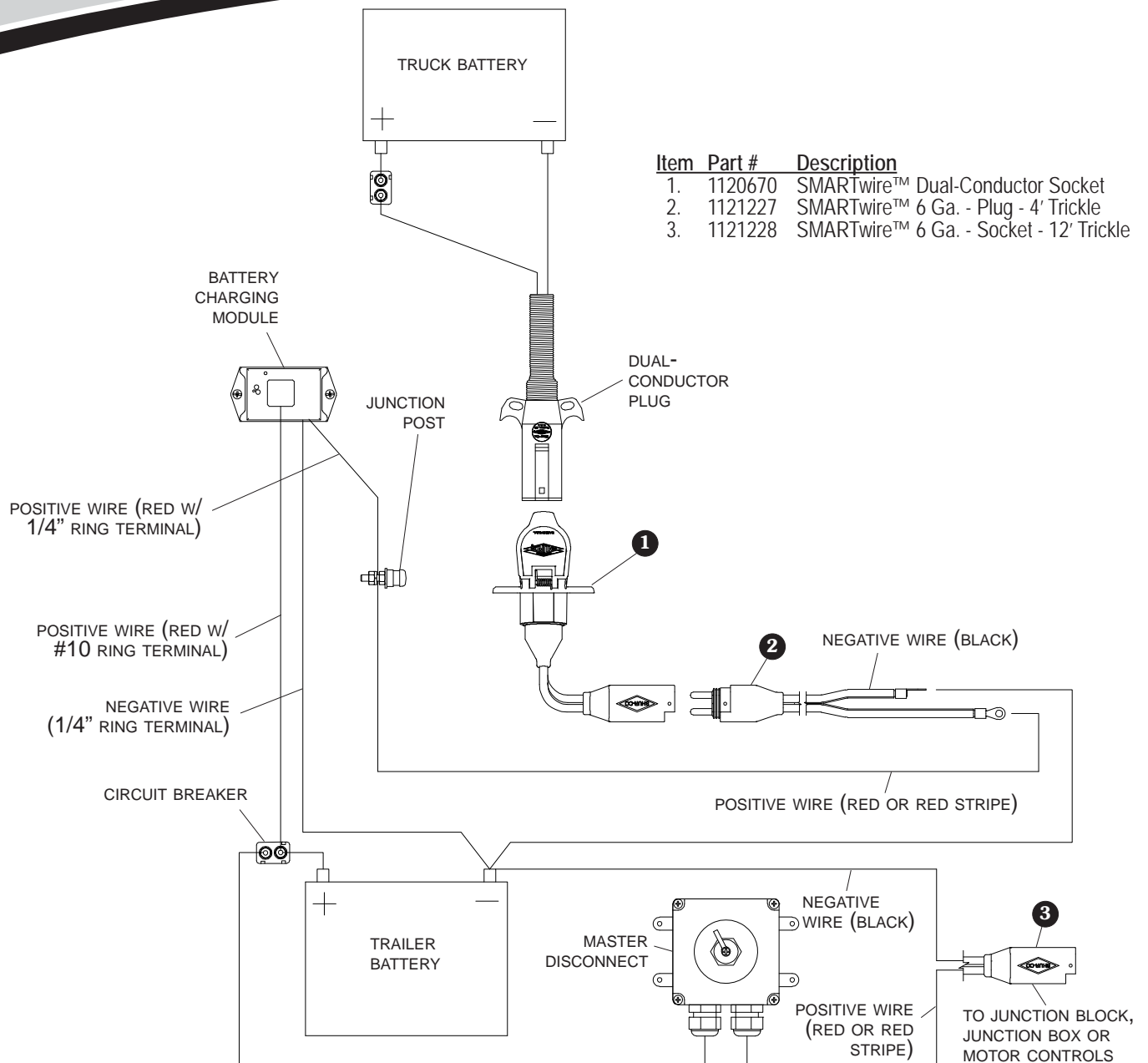


NOTE: Go to wiring instructions on next page.

BATTERY BOX TOP

STEP 6: Secure battery box top to battery box bottom with 1/4" x 5/8" cap screws and lock washers.





WIRING

NOTE: Connect circuit breaker after completing step 1.

STEP 1: Route ring terminal ends of ② wire through dome nuts into battery box. Connect positive lead from ② and red wire from battery charging module with 1/4" ring terminal to junction post. Connect negative lead from ② and black wire from battery charging module to negative trailer battery post. Connect red wire with #10 ring terminal from battery charging module to circuit breaker post near terminal.

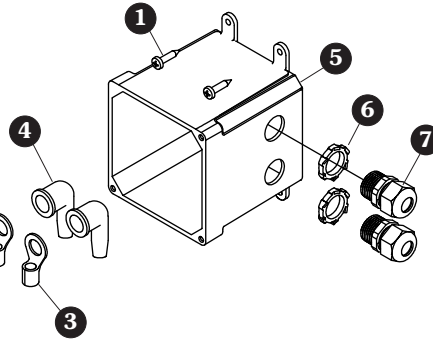
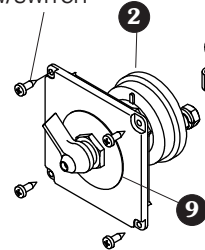
STEP 2: Route ring terminal ends of ③ through dome nuts into battery box. Connect negative lead of ③ to negative post on trailer battery. Connect positive lead of ③ to circuit breaker post farthest from battery terminal.

STEP 3: For outgoing load wire ③, route to load as desired but do not fasten down yet. Locate desired mounting position for master disconnect switch and install switch before securing wire.

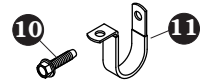


Item	Part #	Description
1.	1704405	Self-Drilling Screw - #8 x 3/4"
2.	1704283	Master Battery Disconnect Switch
3.	1703244	Ring Terminal - 6 Ga. x 3/8" Stud
4.	1704330	Rubber Boot
5.	1118556	Solar Master Disconnect Box
6.	1704187	Lock Nut - 1/2"
7.	1704152	Dome Nut - 1/2"
8.	1121094	SMARTwire™ - 6 Ga. Socket - 12' (not shown)
9.	1704284	Face Plate - Rotary Switch

SCREWS SUPPLIED W/SWITCH



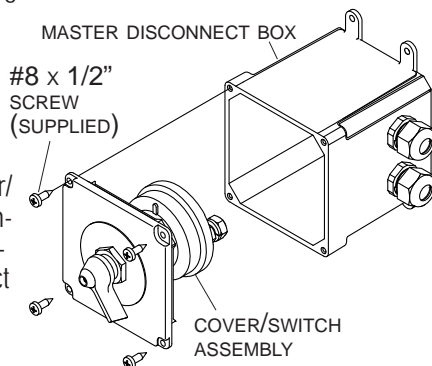
WIRE CLIPS



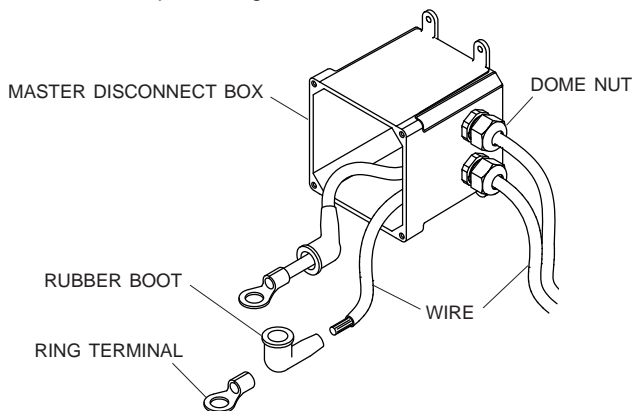
- 10. 1704338 Self-Tapping Screw - 1/4" x 1"
- 11. 1704338 Wire Clip - 1 1/4" - 9/32" Hole

STEP 1: Route wire (P/N 1121094) along planned route. Determine desired location of master disconnect switch along wire route. Cut positive half of this wire at mounting location. Do not cut negative wire. Carefully peel positive side of wire away from negative side about 1" on either side of cut.

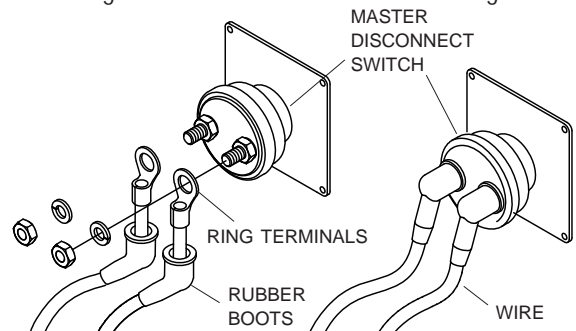
STEP 2: Unfasten screws and remove cover/switch assembly from master disconnect box.



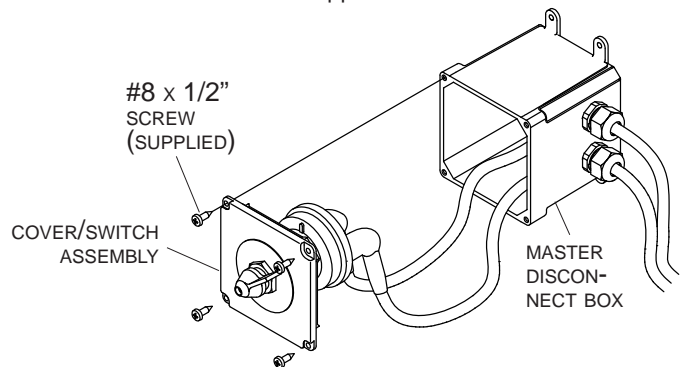
STEP 3: Run positive 6-ga. wire ends through dome nuts on master disconnect box. Run wire ends through rubber boots and crimp 3/8" ring terminals to ends of wire.



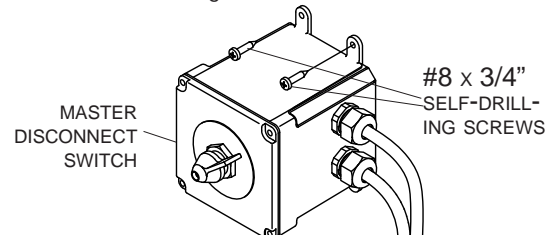
STEP 4: Connect wires to master disconnect switch. Coat with dielectric grease and install rubber boots over ring terminals.



STEP 5: Re-install cover/switch assembly to master disconnect box. Fasten with supplied #8 x 1/2" screws.



STEP 6: Fasten master disconnect switch box to trailer with four #8 x 3/4" self-drilling screws.



STEP 7: Secure wire (P/N 1121094) with wire clips 11 and self-tapping screws 10.

NOTE: Cut wires to length and strip only enough wire insulation to install ring terminals. Insert bare wire into ring terminals and crimp securely.

