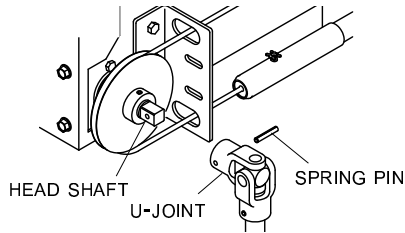


Installation Instructions - Shur-Trak II™ Side Mount Electric Motor - HD Chain Drive

P/N 1122388 Rev. C

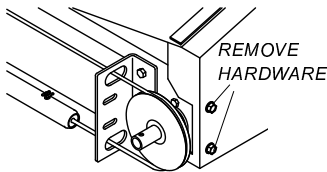
STEP 1: Remove spring pin and crank arm from head shaft on driver side of box.

DRIVER SIDE

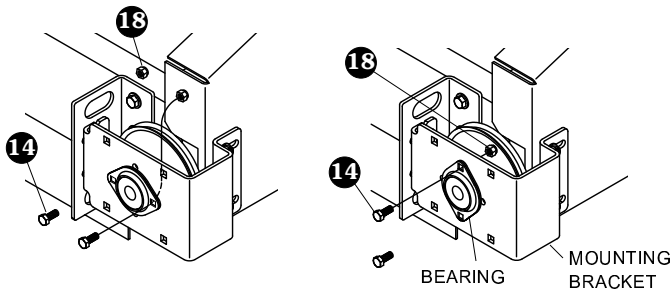
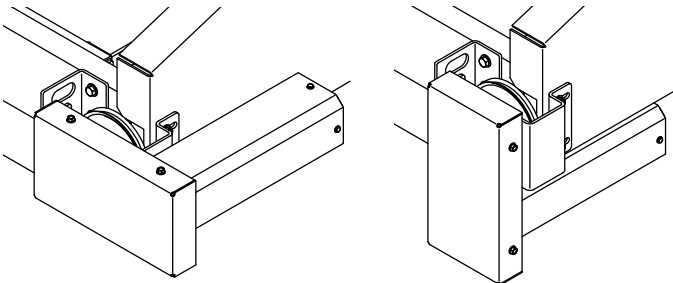


NOTE: Store crank arm on trailer.

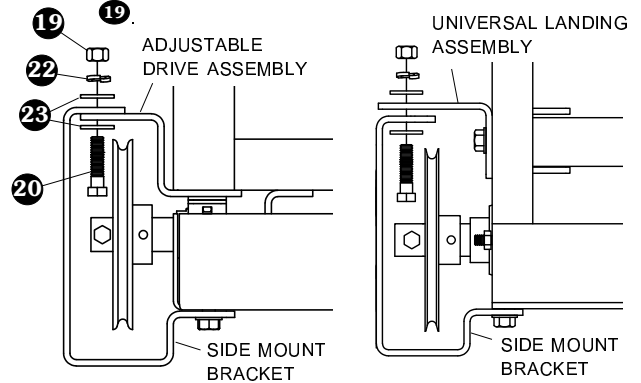
STEP 2: Remove hardware from passenger side of front cover as shown.



STEP 3: Determine desired orientation of gearbox assembly and align as shown. Loosely fasten bearing to mounting bracket with screws **14** and lock nuts **18**.

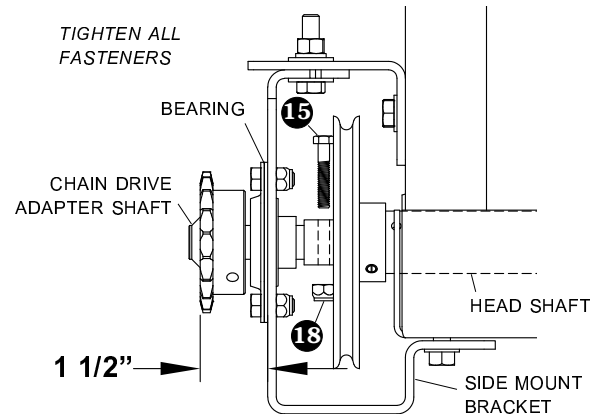


STEP 4: Loosely fasten side mount bracket to cable guard with screws **20**, lock washers **22**, flat washers **23** and nuts **19**.

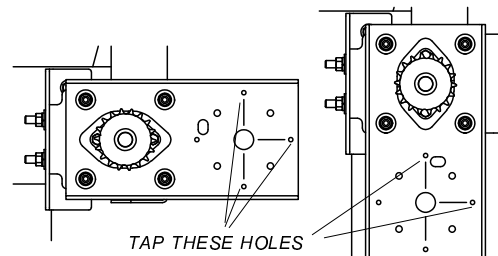


NOTE: If you have an adjustable drive without a cover, fasten side mount bracket to adjustable drive bracket (P/N 1115128).

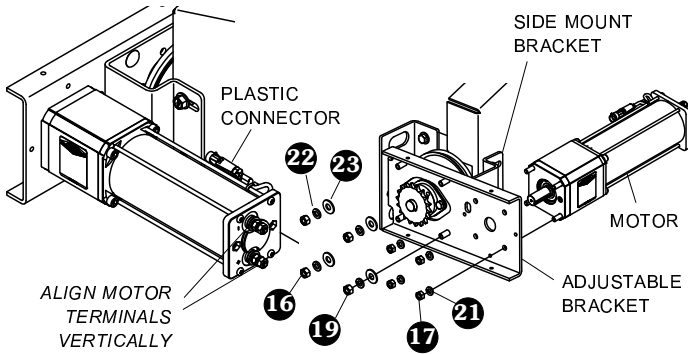
STEP 5: Insert chain drive adapter shaft through bearing and fasten to head shaft with screw **15** and nut **18**. Adjust side mount bracket so face of sprocket is 1 1/2" from face of bracket and align adapter shaft with head shaft. Make sure bracket is square to shaft, then tighten fasteners.



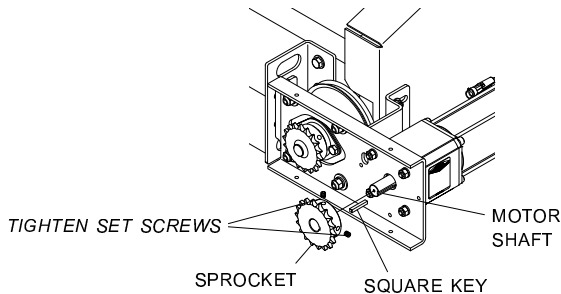
STEP 6: Locate three existing holes shown below on adjustable mount bracket. Using an impact driver, tap holes with screw **13**. Tapped holes will be used to install motor cover (see step 11).



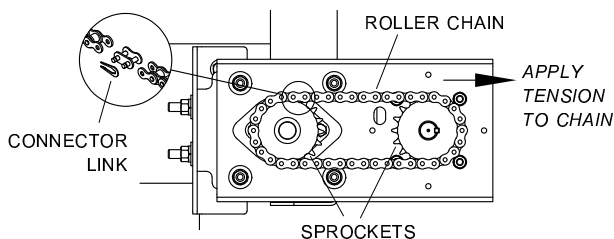
STEP 7: Orient motor so terminals align vertically and plastic connector is between motor and cover as shown. Securely fasten motor to adjustable bracket with washers **21** and nuts **17**. Loosely fasten adjustable bracket to side mount bracket with carriage bolts **16**, flat washers **23**, lock washers **22** and nuts **19**, allowing bracket to slide in adjustment slots.



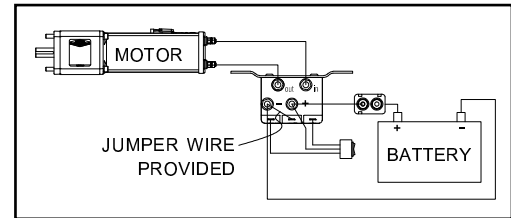
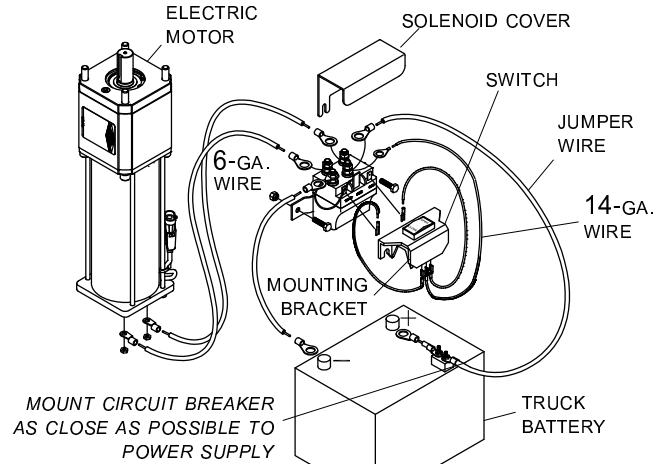
STEP 8: Insert square key into keyway on motor shaft and align key with keyway in sprocket. Slide sprocket onto shaft so face of sprocket is flush with end of motor shaft. Tighten set screws to secure.



STEP 9: Wrap roller chain around sprockets and connect ends with connector link. Pull on bracket to separate sprockets and apply tension to chain, removing slack from chain. Rotate head shaft slightly, if needed, to straighten chain and remove slack (motor shaft will not move). With chain at correct tension, securely tighten fasteners holding adjustable bracket to side mount bracket.



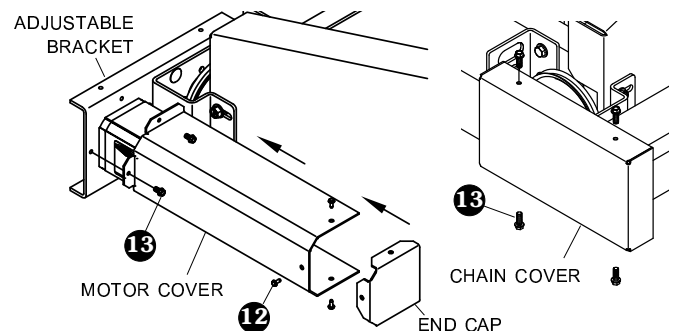
STEP 10: Mount solenoid in suitable location - ventilated area near battery is ideal. Run 6-ga. wire from motor to solenoid and from power supply to circuit breaker to solenoid as shown. Run 14-ga. wire from solenoid to switch and mount switch in an area convenient to operator. Mount switch inside or outside cab. Mount with bracket or install directly into dash panels.



WIRING TIPS

- Pick up power at battery or terminal block. Use 6-ga. wire or larger when connecting to power supply and motor.
- Do not place wire in areas where wire could be pinched or cut during operation. Be sure to loop extra wire at hinge area on dump bodies.
- If switch is running system backwards, reverse 14-ga. wire at solenoid to reverse system operation.
- Momentary contact must be held open or closed to operate system.

STEP 11: Assemble end cap to motor cover and fasten with three screws **12**. Fasten motor cover to adjustable bracket with three screws **13**. Using an impact driver, fasten chain cover to adjustable bracket with four screws **13**.

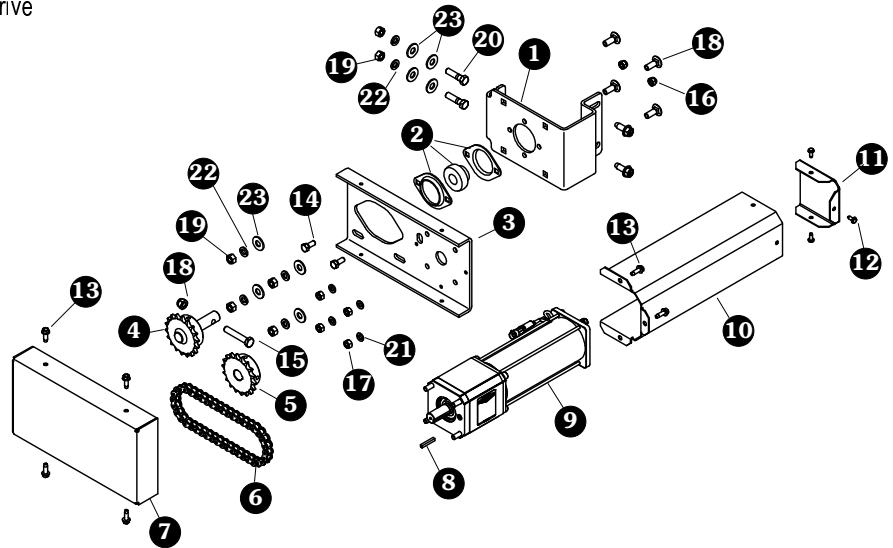


Installation Instructions - Shur-Trak II™ Side Mount Electric Motor - HD Chain Drive - *continued*

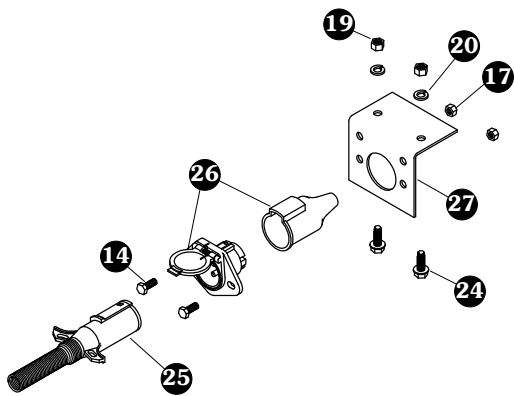
P/N 1122388 Rev. C

SHUR-TRAK II™ HD MOTOR

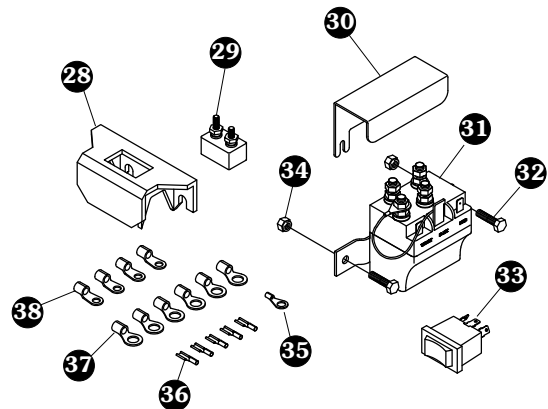
Item	Part #	Description
1.	1122380	Side Mount Motor Bracket - HD Chain Drive
2.	1703374	Radial Ball Bearing w/Flanges - 3/4"
3.	1122381	Side Mount Adjustable Bracket
4.	1122379	Chain Drive Adapter Shaft
5.	1122377	Sprocket - 18 Tooth - 3/4" Bore
6.	1122385	Roller Chain Assembly
7.	1122382	Chain Drive Cover
8.	1120762	Key - 3/16" x 1 1/4"
9.	1122442	Motor - Shur-trak II™ HD
10.	1122383	Motor Cover
11.	1122384	Motor Cover End Cap
12.	1704308	Flanged Cap Screw - #10 x 1/2"
13.	1700403	Self-Tapping Screw - 1/4" x 3/4"
14.	1701045	Cap Screw - 5/16" x 3/4"
15.	1701468	Cap Screw - 5/16" x 1 3/4"
16.	1705051	Carriage Bolt - 3/8" x 1"
17.	1700411	Hex Nut - 5/16"
18.	1700419	Nylon Lock Nut - 5/16"
19.	1700407	Hex Nut - 3/8"
20.	1701434	Cap Screw - 3/8" x 1 1/2"
21.	1700433	Lock Washer - 5/16"
22.	1700434	Lock Washer - 3/8"
23.	1700429	Flat Washer - 3/8"
24.	1700400	Self-Tapping Screw - 3/8" x 1"
25.	1115385	Heavy-Duty Dual-Conductor Plug
26.	1119557	Heavy-Duty Dual-Conductor Socket w/Boot
27.	1109015	Dual-Conductor Plug Mounting Bracket
28.	1703661	Rocker Switch Mounting Bracket
29.	1704354	40-Amp Modified-Reset Circuit Breaker
30.	1703480	50-Amp Auto-Reset Circuit Breaker
31.	1703896	Solenoid Cover
32.	1703845	Motor-Reversing Solenoid
33.	1700381	Cap Screw - 1/4" x 1"
34.	1116020	Rocker Switch
35.	1701543	Nylon Lock Nut - 1/4"
36.	1703660	Ring Terminal - 14-Ga. x 5/16" Stud - Solenoid
37.	1703659	Push-On Terminal - 14-Ga. - 1/4" - Switch/Solenoid
38.	1702707	Ring Terminal - 6 Ga. x 1/4" Stud - Motor/Solenoid
39.	1703245	Ring Terminal - 6-Ga. x #10 Stud - Motor/Breaker



NOTE: Switch wire connections on motor to reverse flow of current. Ground system through solenoid only.



DUAL-POLE CONDUCTOR



ELECTRIC COMPONENTS