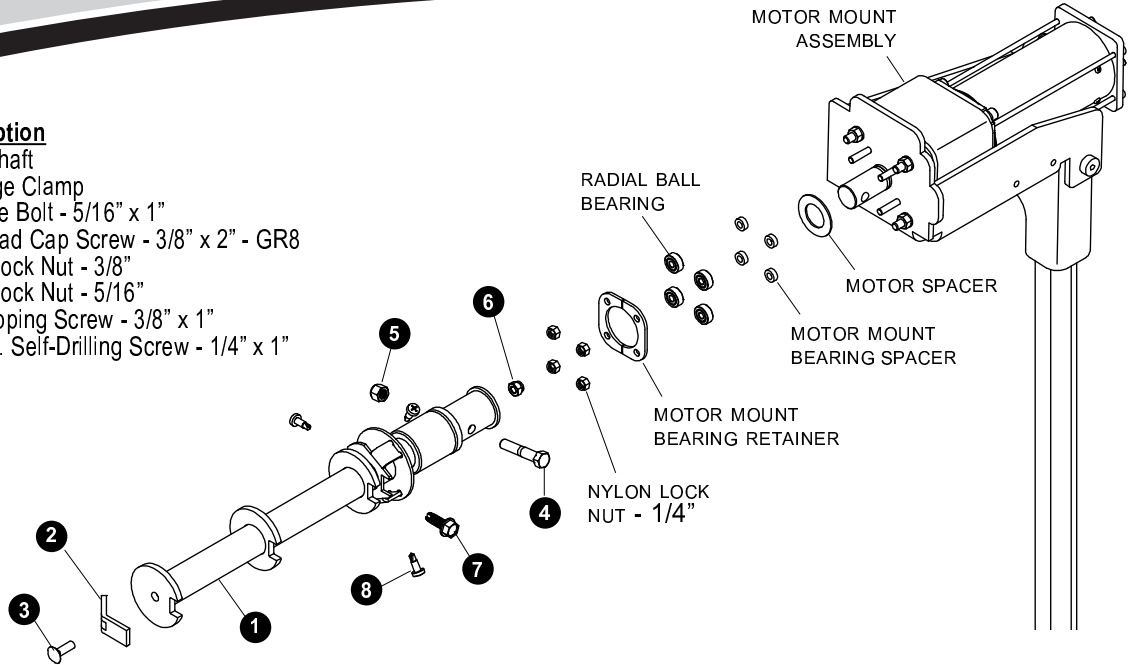


Front Drive Shaft - 3" Roll Tube

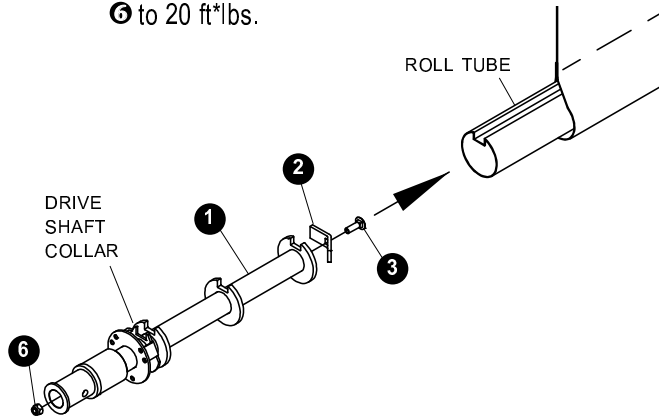
P/N 1122920 Rev. B

Item Part # Description

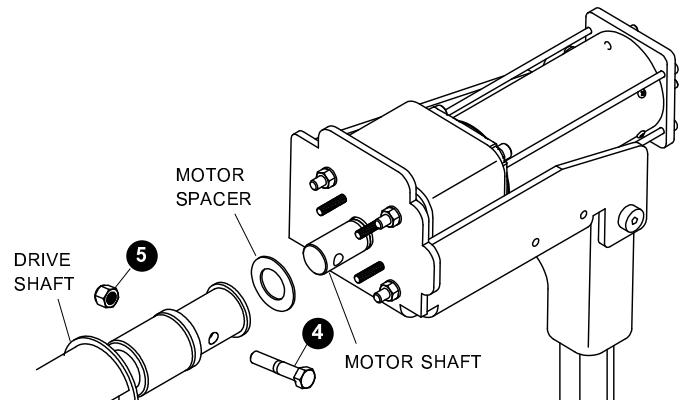
- 1. 1122264 Drive Shaft
- 2. 1118194 Cartridge Clamp
- 3. 1704237 Carriage Bolt - 5/16" x 1"
- 4. 1704264 Hex Head Cap Screw - 3/8" x 2" - GR8
- 5. 1701580 Nylon Lock Nut - 3/8"
- 6. 1704297 Nylon Lock Nut - 5/16"
- 7. 1700400 Self-Tapping Screw - 3/8" x 1"
- 8. 1705198 Pan Hd. Self-Drilling Screw - 1/4" x 1"



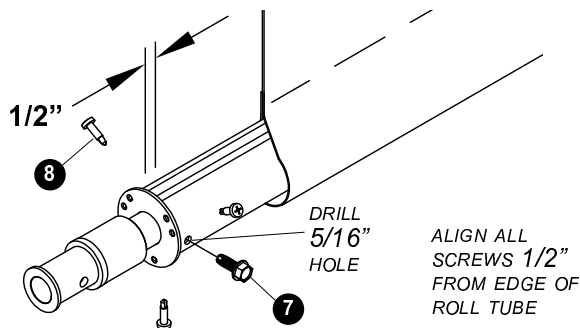
STEP 1: Loosely fasten cartridge clamp 2 to drive shaft 1 with screw 3 and lock nut 6. Insert drive shaft into roll tube as shown. To secure drive shaft to roll tube, tighten nut 6 to 20 ft*lbs.



STEP 3: Slide motor spacer over motor shaft. Slide drive shaft over motor shaft. Fasten with screws 4 and nuts 5. Finger tighten only.



STEP 2: Install three screws 8 through roll tube and flats on drive shaft collar. Drill 5/16" hole between flats and collar, then fasten screw 7 through roll tube and drive shaft collar.



PO BOX 713 ■ 2309 SHUR-LOK STREET
YANKTON, SOUTH DAKOTA 57078-0713
PH. 1-800-474-8756 ■ FAX 605-665-0501



SHUR-CO® HELP LINE
CALL: 1-866-748-7435
www.shurco.com



CAUTION

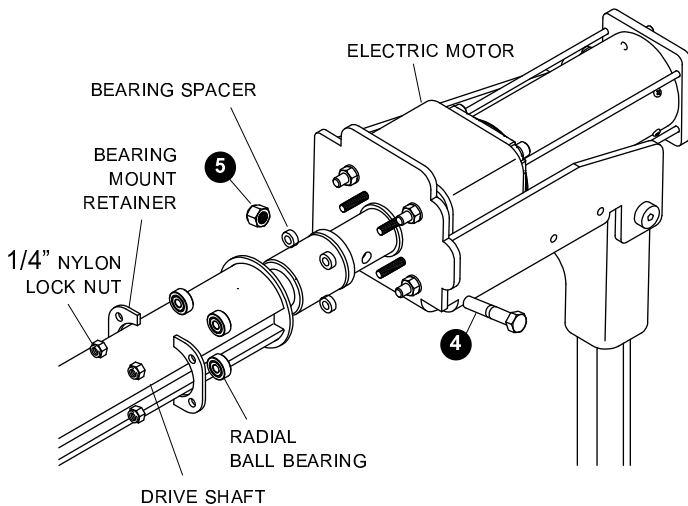
If clearance lights are in path of roll tube, install deflector to prevent roll tube from damaging lights.



WARNING

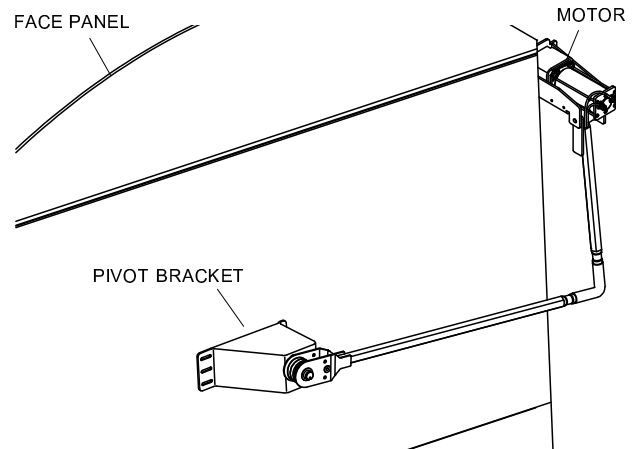
Flex arms are under tension while torsion springs are engaged. Use caution while assembling and disassembling arms. Failure to read and follow instructions could result in serious injury or death.

STEP 4: Fasten drive shaft to electric motor shaft with screw ④ and nut ⑤. Install bearing spacers, radial ball bearings and bearing mount retainer and secure with 1/4" lock nuts.



NOTE: Make sure all fasteners holding motor to upper flex arm bracket are tightened securely.

STEP 5: Position motor as shown below. Make sure torsion springs load when tarp opens.



STEP 6: Align flex arm vertically with front of trailer and 90° to roll tube.

