



TARP SYSTEMS & ACCESSORIES

READ BEFORE INSTALLING

P/N 1122799 Rev. G



Shurlink™ SMARTwire™ Hopper Door Opener OWNER'S MANUAL

Download ShurLink™ App



READ BEFORE OPERATING

**2309 SHUR-LOK STREET • YANKTON, SD 57078-0713
PHONE: 1-800-SHUR-LOK (1-800-474-8756) • FAX: 1-605-665-0501
www.SHURCO.com**

SHOP ONLINE: www.SHOPSHURCO.com

Scan QR Code

ORDER
TERMS AND CONDITIONS



WARRANTY



PATENTS

**SHUR-CO[®], LLC SERVICE AND DISTRIBUTION CENTERS**

SHUR-CO[®] CORPORATE HQ
2309 Shur-Lok Street, Yankton
800-729-2969
Fax: 605-665-0501

SHUR-CO[®] of FLORIDA
3353 SE Gran Park Way, Stuart
800-327-8287
Fax: 772-287-0431

SHUR-CO[®] of CANADA
490 Elgin Street, Unit 2
Brantford, Ontario N3S 7P8
800-265-0823
Fax: 519-751-3997

SHUR-CO[®] of IDAHO
921 Garber Street, Caldwell
208-455-1046
Fax: 208-455-1046

SHUR-CO[®] of OHIO
4676 Lynn Road, Rootstown
866-356-0242
Fax: 330-297-5599

SHUR-CO[®] of SOUTH DAKOTA
1212 N. Norbeck St., Vermillion, SD
605-658-1020
Fax: 605-658-1022


SHUR-CO[®] of ILLINOIS
3993 E. Mueller Avenue, Decatur
866-356-0246
Fax: 217-877-8270

SHUR-CO[®] of NORTH DAKOTA
1746 4th Avenue. NW, West Fargo
877-868-4488
Fax: 701-277-1284

SHUR-CO[®] UK LIMITED
Unit 41, Rochester Airport Estate
Laker Road
Rochester, Kent ME1 3QX

MESSAGE TO OWNERS

Thank you for buying this electronic system from Shur-Co®. We appreciate your confidence in our products. Please read and thoroughly understand this manual before operating this system.

Pay particular attention to important safety and operating instructions, as well as warnings and cautions. The hazard symbol  is used to alert users to potentially hazardous conditions and is followed by caution, warning or danger messages.

Failure to READ AND FOLLOW INSTRUCTIONS could result in failure of your electronic system and/or personal injury. Your trailer requirements may, however, call for minor variations to these instructions.

Please inspect your electronic system periodically. Repair or replace worn or damaged parts to your system.

QUESTIONS? CALL OUR HELP LINE:

1-866-748-7435

MON-FRI 8 AM-5 PM CENTRAL TIME

SAFETY

We at Shur-Co® are concerned with your safety and the safety of all those operating this system. Therefore, we have provided safety decals at various locations on your electric system. Keep decals as clean as possible at all times. Replace any decal that has become worn or damaged, painted over or otherwise difficult to read. Replacement decals are available through Shur-Co® dealers.

SAFETY INSTRUCTIONS

1. Keep body and clothing clear of moving parts.
2. No other use of this system is authorized, except as designed.

RUST PREVENTION

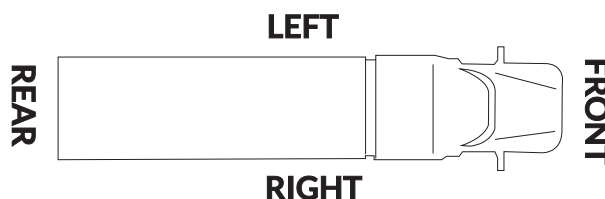
To prevent rust, paint all exposed metal, such as weld seams and/or metal exposed by grinding or cutting, with corrosion-resistant paint.

TABLE OF CONTENTS

Mounting & Wiring	4
Operation.....	6
Replacement Parts	7-9

TOOLS REQUIRED

1. Pencil or Marker
2. Drill
3. 7/8" Drill Bit
4. Wire Cutters
5. Dry Silicone Spray Lubricant
6. Wire Terminal Crimper
7. 1" Combination Wrench
8. #3 Phillips Insert Bit
9. #2 Phillips Screw Driver
10. Allen Wrench (supplied) - 15/16"

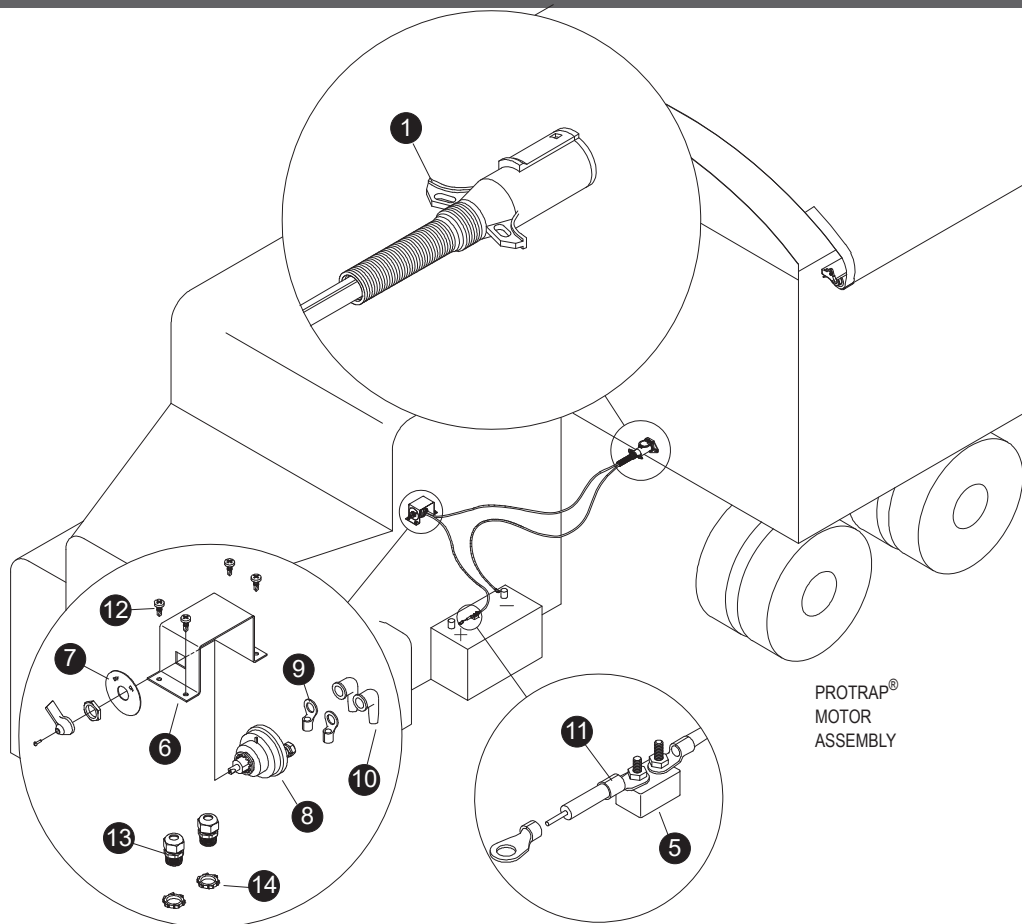
VEHICLE ORIENTATION**WARNING**

- MOVING PARTS HAVE PINCH POINTS AND ENTANGLEMENT AREAS.
- STAY CLEAR OF DOOR AND MECHANISMS WHEN OPERATING.
- FAILURE TO COMPLY CAN CAUSE INJURY OR DEATH.

**CAUTION**

- JAMMED OR OVERLOADED DOOR CAN CAUSE MOTOR DAMAGE.
- RELEASE SWITCH IMMEDIATELY IF DOOR STALLS OR REACHES END OF INTENDED TRAVEL.
- FAILURE TO COMPLY CAN CAUSE MOTOR AND EQUIPMENT DAMAGE.

P/N 1704341



PROTRAP®
MOTOR
ASSEMBLY

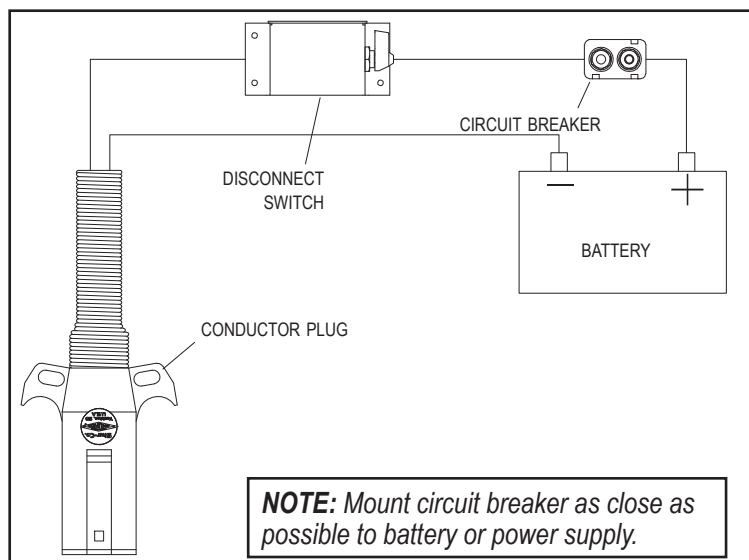
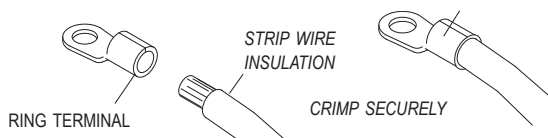
Item	Part #	Description
1.	1115385	Heavy-Duty Dual-Conductor Plug
5.	1704354	40-Amp Modified-Reset Circuit Breaker
6.	1118323	Disconnect Switch Mounting Bracket
7.	1704284	Face Plate
8.	1704283	Battery Disconnect Rotary Switch
9.	1705105	Ring Terminal - 4 Ga. x 3/8" Stud
10.	1704330	Rubber Insulating Boot
11.	1705106	Ring Terminal - 4 Ga. x #10 Stud
	1703231	Cable Tie - 8" (not shown)
12.	1700398	Self-Drilling Screw - 1/4" x 3/4"
13.	1704152	Dome Nut - 1/2"
14.	1704187	Lock Nut - 1/2"



NOTICE

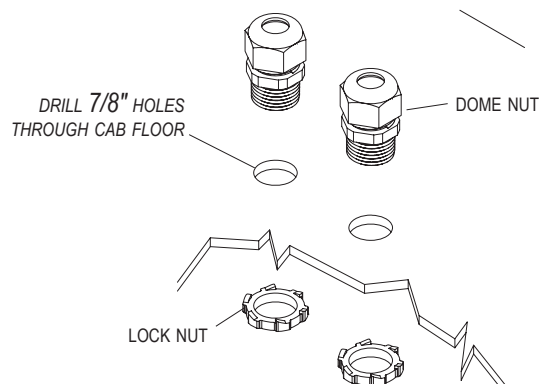
Do not power any Shur-Co® wireless system with battery charger alone, as this will likely cause system abnormalities and/or system malfunction. Instead, use 12-volt truck/automobile battery to provide power to trailer.

NOTE: Cut wires to length and strip only enough wire insulation to install ring terminals. Insert bare wire into ring terminals and crimp securely.

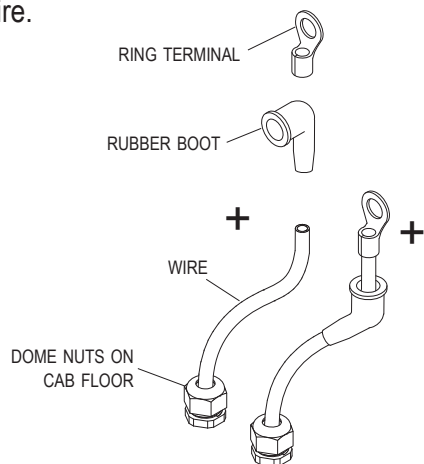


NOTE: Mount circuit breaker as close as possible to battery or power supply.

STEP 1: Drill two 7/8 inch holes in cab floor to route wire into cab. Install dome nut strain reliefs into holes.

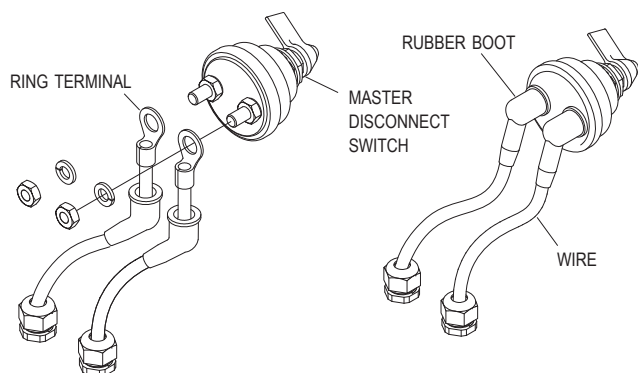


STEP 2: Run positive 4-ga. wire from battery through dome nuts on cab floor. Run wire ends through rubber boots, strip wire ends and crimp 3/8 inch ring terminals to ends of wire.



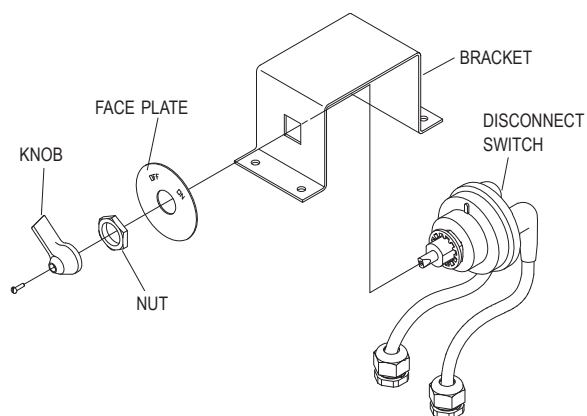
NOTE: Use dry silicone spray lubricant on wire and boots to aid installation. This is a very tight fit.

STEP 3: Connect wires to disconnect switch. Coat with dielectric grease and install rubber boots over ring terminals.

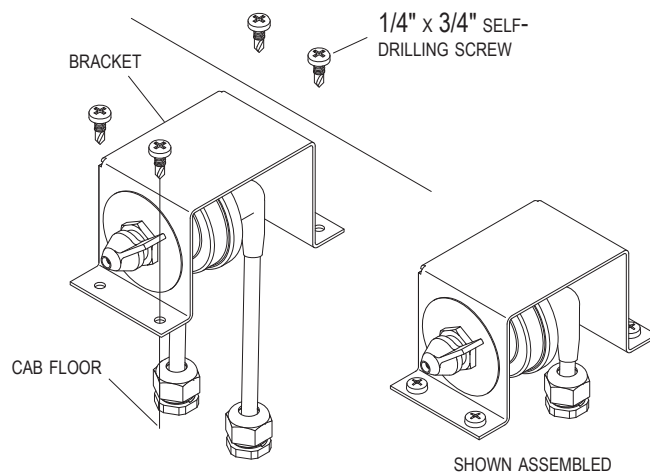


NOTE: Use dielectric grease (P/N 1704378) to prevent corrosion on terminals.

STEP 4: Remove knob and nut from disconnect switch and assemble face plate and disconnect switch to bracket as shown.

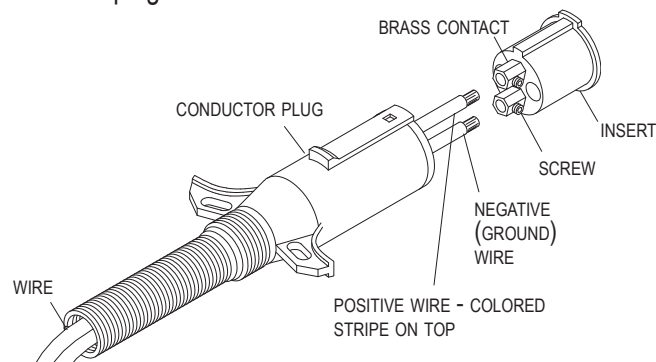


STEP 5: Fasten bracket to cab floor with 1/4 inch x 3/4 inch self-drilling screws.



NOTE: Push buttons will remain active until master disconnect switch is turned off.

STEP 6: Unfasten and remove insert from conductor plug. Feed 4-ga. wire through plug and into brass contacts on insert. Tighten screws to secure wires. Replace insert into conductor plug and secure screw.



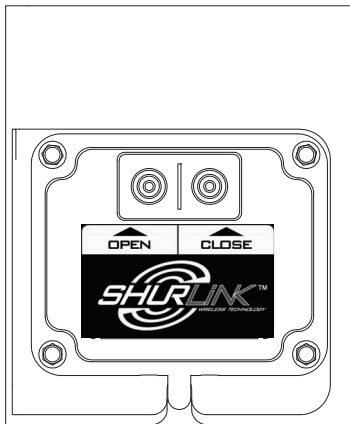


CAUTION

Check all hardware for complete assembly before operating. Inspect system at this time and adjust as required.

OPERATION

Control box operation: Press and hold **CLOSE** button to close tarp door. Motor will turn off if trap door hits obstruction. Press and hold **OPEN** button to open trap door. Motor will turn off if trap door hits obstruction. If travel stops are set, motor will turn off at programmed travel limit on open side.



Remote operation: Refer to operating instructions included with your remote.

NOTE: To pair a ShurLink™ remote to a control box:

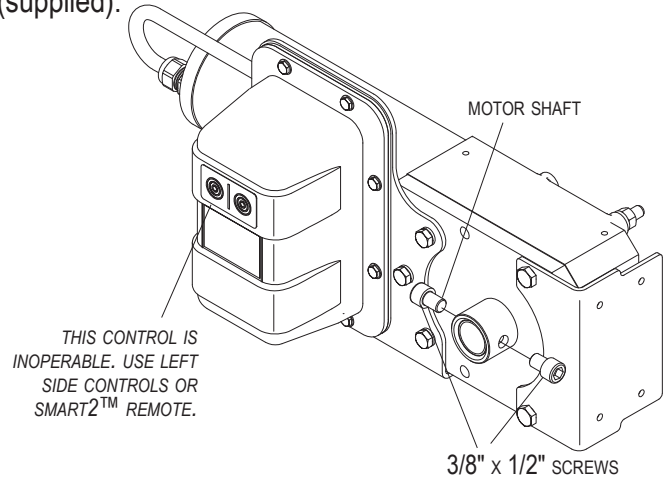
1. Select **ADD DEVICE** from remote's **SETUP MENU**.
2. Put remote down. On control box, hold **OPEN** and **CLOSE** buttons simultaneously for six seconds.
3. After buttons are released, remote will display **DEVICE FOUND**.

NOTE: If system turns off unexpectedly, rule out travel stops as a potential cause by deleting travel stops. Press **OPEN** and **CLOSE** together for 35 seconds to delete travel stops.

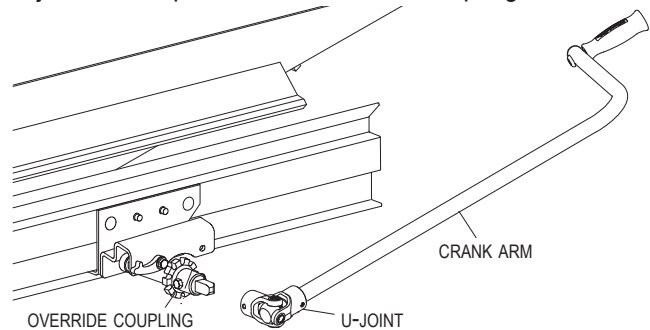
NOTE: Receiver may be pressure washed, but keep nozzle at least 3 feet from system while spraying.

CONVERT TO MANUAL CRANK

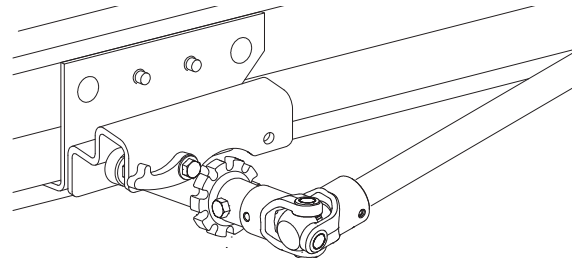
STEP 1: Remove protective cap and 3/8 inch x 1/2 inch screws from motor shaft with 5/16 inch Allen wrench (supplied).



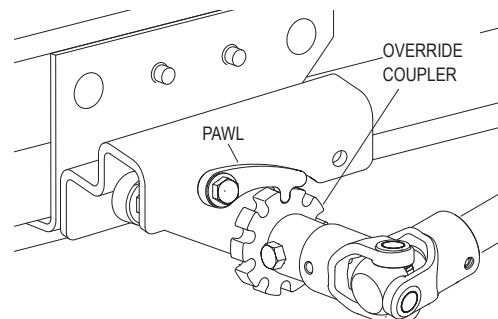
STEP 2: Remove crank arm from storage location. Slide U-joint over square end of override coupling.

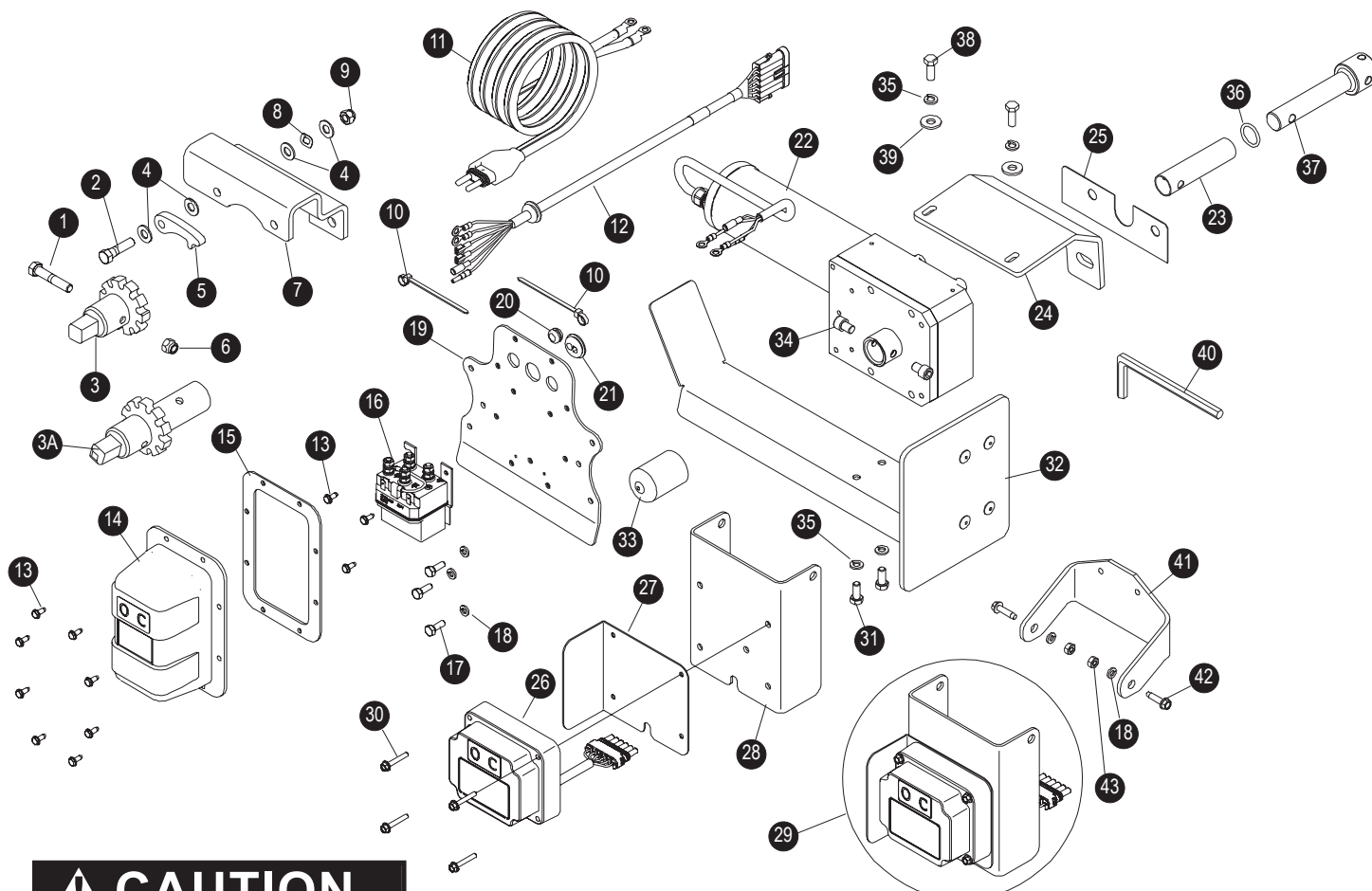


STEP 3: Turn crank to open and close cover.



STEP 4: Insert pawl into override coupler to lock trap into position.





⚠ CAUTION

Solenoid (16) must be used with control box (26).

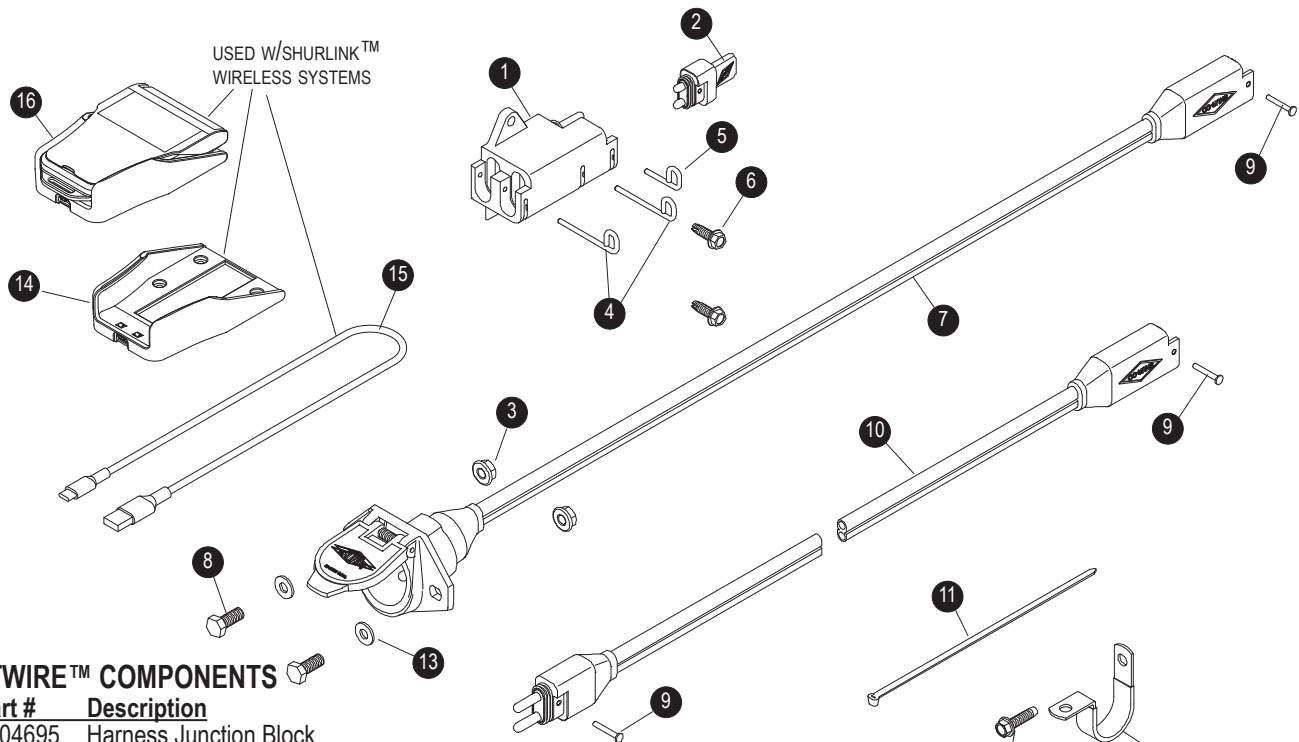
NOTE: Replace MaxxTrap™ parts only with Genuine Shur-Co® parts to ensure proper system function. If Genuine Shur-Co® parts are not used, warranty could be void.

WIRELESS ASSEMBLIES

Item	Part #	Description
1.	1705083	Cap Screw - 5/16" x 2" - Grade 8
2.	1701434	Cap Screw - 3/8" x 1-1/2"
*3.	1705078	MaxxTrap™ Override Coupling - 1"
	1705077	MaxxTrap™ Override Adapter - 7/8"
3A	1124587	Manual Override Coupling - RP2
4.	1701176	Flat Washer - 3/8"
5.	1705089	Manual Override Pawl
6.	1704297	Nylon Lock Nut - 5/16"
*7.		Manual Override Bracket
8.	1705087	Wave Washer - 3/8" - SS
9.	1701580	Nylon Lock Nut - 3/8"
10.	1703231	Cable Tie - 8"
11.	1704716	SMARTwire™ - 6 Ga. - M x 1/4" Ring - 10'
12.	1705257	Cable Assembly
13.	1704308	Hex Flange Cap Screw - #10 x 1/2"
14.	1122717	Dummy Solenoid Cover
15.	1704309	Solenoid Cover Gasket
16.	1705408	Motor-Reversing Solenoid - 12V - 3 Pt. - Black Wire

Item	Part #	Description
17.	1703959	Cap Screw - 1/4" x 3/4"
18.	1700436	Lock Washer - 1/4"
19.	1124846	Solenoid Bracket
20.	1705101	Rubber Grommet - 3/8" x 1/2" x 3/32"
21.	1704721	Rubber Grommet - Wire Slot x .875" x .094"
22.	1124591	MaxxTrap™ Motor
23.	1705480	Bushing - .990" OD x .895" ID x 4" - ABS
*24.		Gearbox Mounting Bracket
25.	1124566	Shim Insulator
26.	1131667	ShurLink™ MaxxTrap™ Control Box
27.	1122655	Control Box Mudguard
28.	1124321	Receiver Bracket - Mini-Module
29.	1131668	ShurLink™ MaxxTrap™ Control Box w/Mounting Bracket
30.	1705912	Hex Flange Cap Screw - #10 x 1-1/2"
31.	1701045	Cap Screw - 5/16" x 3/4"
32.	1124858	Universal Debris Deflector
33.	1700789	Protective Cap - 1.3" ID x 1-5/8"
34.	1705476	Socket Hd. Cap Screw - 3/8" x 1/2"
35.	1700433	Lock Washer - 5/16"
36.	1705477	O-Ring - 7/8" ID x 1-1/8"
37.	1705463	Drive Shaft Coupling
38.	1705142	Cap Screw - 5/16" x 7/8"
39.	1700427	Flat Washer - 1/4" - USS
40.	1705479	Allen Wrench - 5/16"
41.	1123892	Receiver Mounting Bracket
42.	1704338	Self-Tapping Screw - 1/4" x 1"
43.	1700408	Hex Nut - 1/4"

*Specify make, model and year of trailer

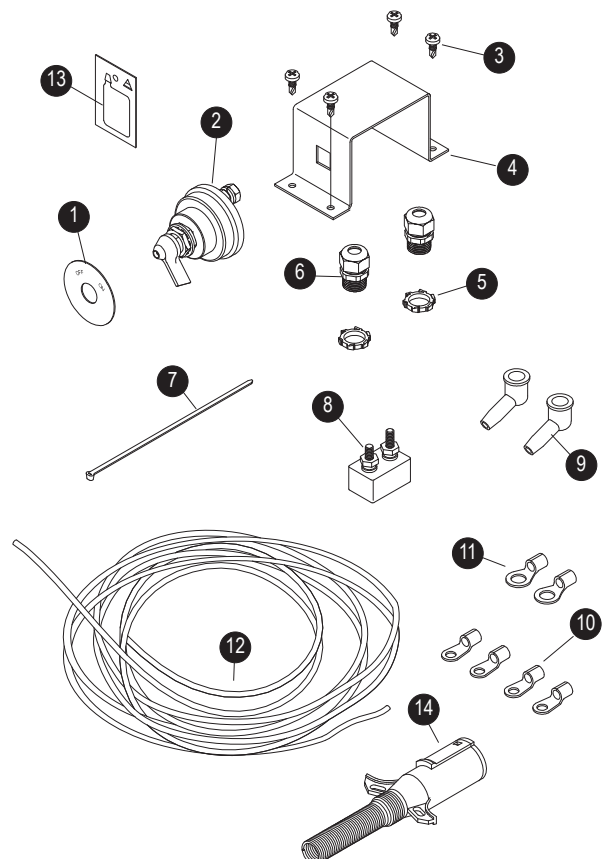


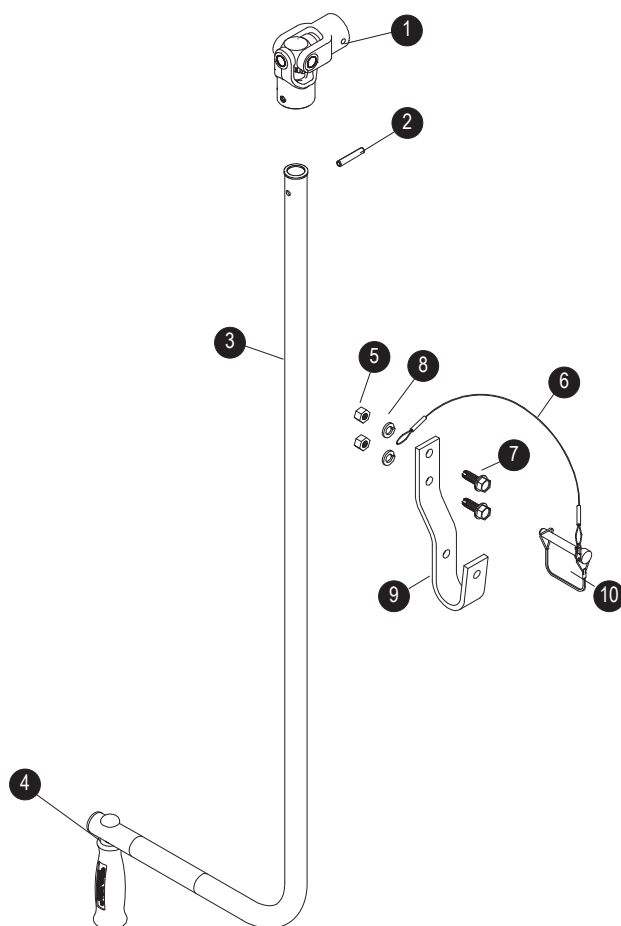
SMARTWIRE™ COMPONENTS

Item	Part #	Description
1.	1704695	Harness Junction Block
2.	1704717	Wire Harness Rubber Plug
3.	1704946	Flanged Top Lock Nut - 5/16"
4.	1704696	Harness Lock Pin - Long
5.	1704711	Harness Lock Pin - Short
6.	1704338	Self-Tapping Screw - 1/4" x 1"
7.	1120670	SMARTwire™ Dual-Conductor Socket
8.	1701045	Cap Screw - 5/16" x 3/4"
9.	1704751	Harness Lock Pin - 1/4" x 7/8"
10.		SMARTwire™ - 4 Ga. x 25' - Plug/Socket
		SMARTwire™ - 4 Ga. x 30' - Plug/Socket
11.	1703231	Cable Tie - 8"
12.	1702108	Wire Clip - 3/4"
13.	1700427	Flat Washer - 1/4"
14.	1131764	ShurLink PRO™ Charging Cradle
15.	1706836	ShurLink PRO™ Charging Cable
16.	1131575	ShurLink PRO™ Remote w/Cradle & Charging Cable

MASTER DISCONNECT SWITCH/CAB WIRING

Item	Part #	Description
	1118417	Cab Wiring Kit - Master Disconnect
1.	1704284	Face Plate
2.	1704283	Battery Disconnect Rotary Switch
3.	1700398	Self-Drilling Screw - 1/4" x 3/4"
4.	1118323	Disconnect Switch Mounting Bracket
5.	1704187	Lock Nut - 1/2"
6.	1704152	Dome Nut - 1/2"
7.	1703231	Cable Tie - 8"
8.	1704354	40-Amp Modified-Reset Circuit Breaker
9.	1704330	Rubber Insulating Boot
10.	1705105	Ring Terminal - 4 Ga. x 3/8" Stud
11.	1705106	Ring Terminal - 4 Ga. x #10 Stud
12.	1705107	Dual Conductor Wire - 4 Ga. 133 Strand (per foot)
13.	1704378	Dielectric Connector Protector
14.	1115385	Heavy-Duty Dual-Conductor Plug



**CRANK ARMS & CRANK RETAINERS**

Item	Part #	Description
	1101929	Offset Crank Retainer Kit
	1122729	Override Crank w/U-Joint
1.	1700527	Econo U-Joint
2.	1700445	Spring Pin - 1/4" x 1-1/2"
3.	1124947	Crank Arm - 42"
4.	1116110	Crank Handle Kit
5.	1700407	Hex Nut - 3/8"
6.	1100574	Cable w/#5 Interlock Snap
7.	1700400	Self-Tapping Screw - 3/8" x 1"
8.	1700434	Lock Washer - 3/8"
9.	1101930	Crank Retainer Hook
10.	1700526	Wire Lock Pin

2309 SHUR-LOK STREET • YANKTON, SD 57078-0713
PHONE: 1-800-SHUR-LOK (800-474-8756) • FAX: 1-605-665-0501
www.SHURCO.com
