



ENGINEERED TARPING SOLUTIONS

P/N 1123479 Rev. A

INSTALLATION INSTRUCTIONS



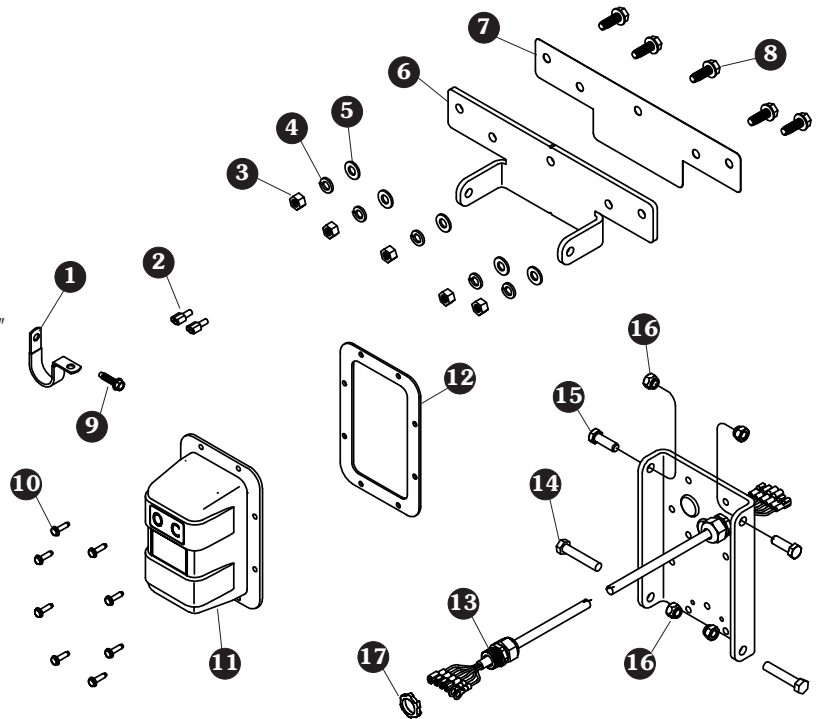
Conversion to Opposite Side

READ BEFORE INSTALLING

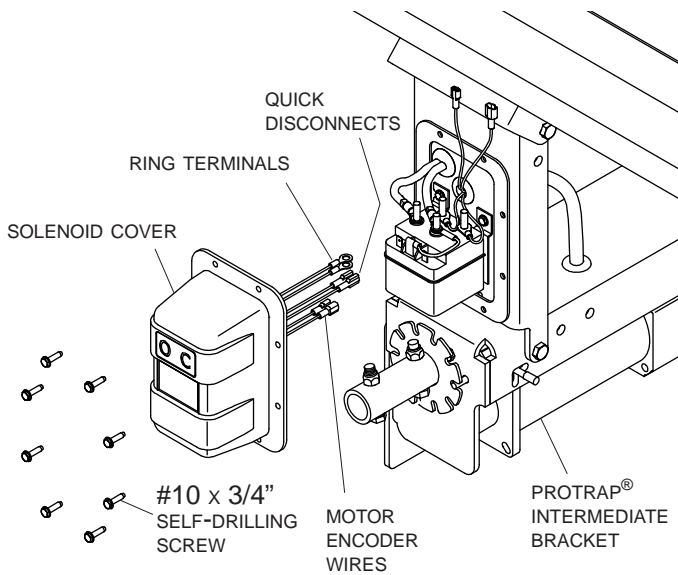
PO BOX 713 ■ 2309 SHUR-LOK STREET ■ YANKTON, SD 57078-0713
PHONE 1-800-4-SHUR-LOK (1-800-474-8756) ■ FAX 605-665-0501
www.shurco.com

SHOP ONLINE: www.shopshurco.com

Item	Part #	Description
1.	1702108	Wire Clip - 3/4" - 9/32" Hole
2.	1705072	Male Quick Disconnect - 16-22 Ga. x 1/4"
3.	1700407	Hex Nut - 3/8"
4.	1700434	Lock Washer - 3/8"
5.	1700429	Self-Tapping Screw - 3/8" x 1"
6.	1118028	Hinge Bracket
7.	1118277	Shim Insulator
8.	1700400	Self-Tapping Screw - 3/8" x 1"
9.	1704338	Self-Tapping Screw - 1/4" x 1"
10.	1704367	Cap Screw - #10 x 3/4"
11.	1122775	Solenoid Cover - Non-Functioning
12.	1704309	Solenoid Cover Gasket
13.	1123477	External Control Bracket - SMART2™
14.	1704264	Cap Screw - 3/8" x 2"
15.	1702904	Cap Screw - 3/8" x 1 1/8"
16.	1701580	Nylon Lock Nut - 3/8"
17.	1704187	Lock Nut - 1/2"

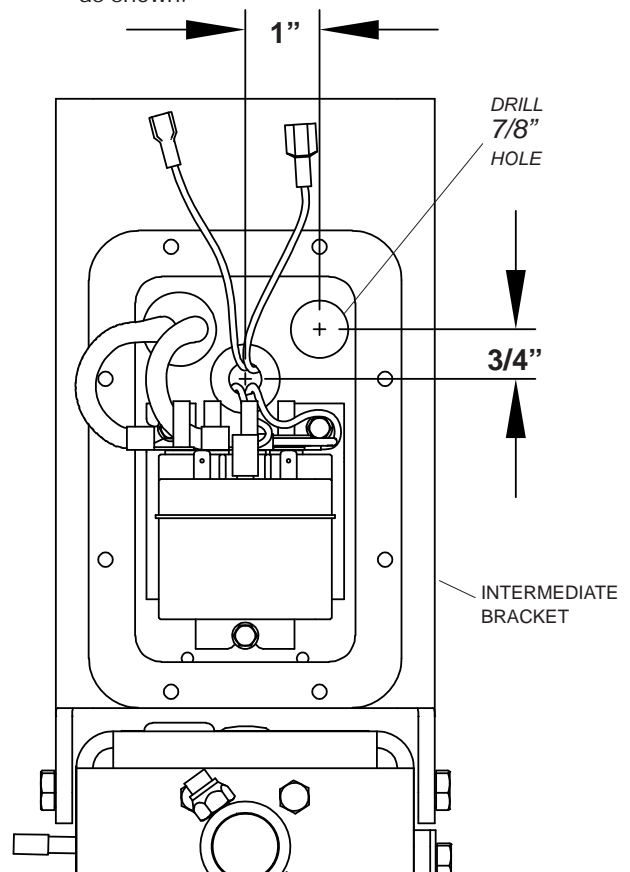


STEP 1: Unfasten and remove eight screws and solenoid cover from ProTrap® intermediate bracket assembly. Save screws from solenoid cover for later use.

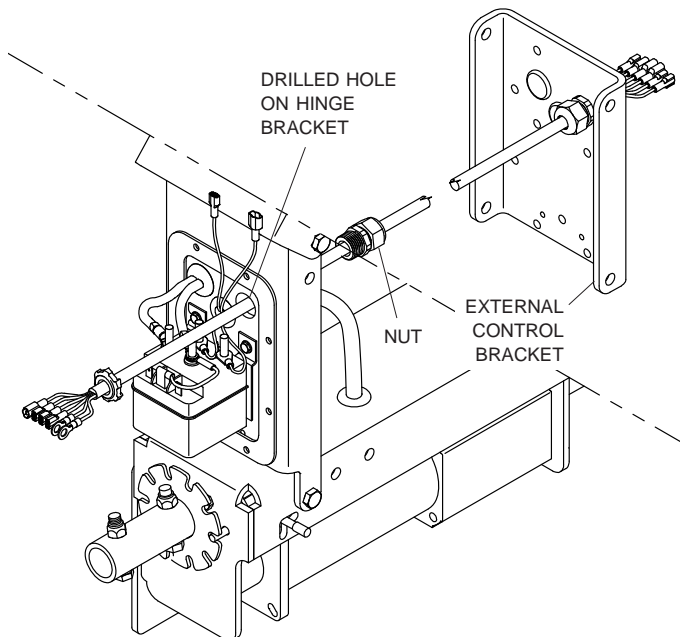


STEP 2: Detach quick disconnects and ring terminals from solenoid. Detach quick disconnects from motor encoder wires.

STEP 3: Mark and drill 7/8" hole through intermediate bracket as shown.



STEP 4: Insert external control bracket fitting into drilled hole on intermediate bracket assembly and secure with nut.



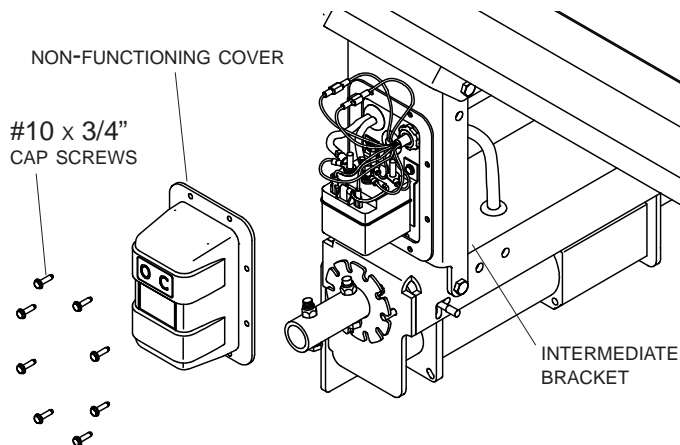
STEP 5: Connect wires.

- a. 1/4" ring-terminal red wire to 1/4" post with 6-ga. red wire.
- b. 1/4" ring-terminal black wire to 1/4" post with 6-ga. black wire.
- c. 3/16" quick-disconnect male brown wire to 3/16" quick-disconnect female black wire.
- d. 3/16" quick-disconnect female white wire to 3/16" quick-disconnect male red wire.

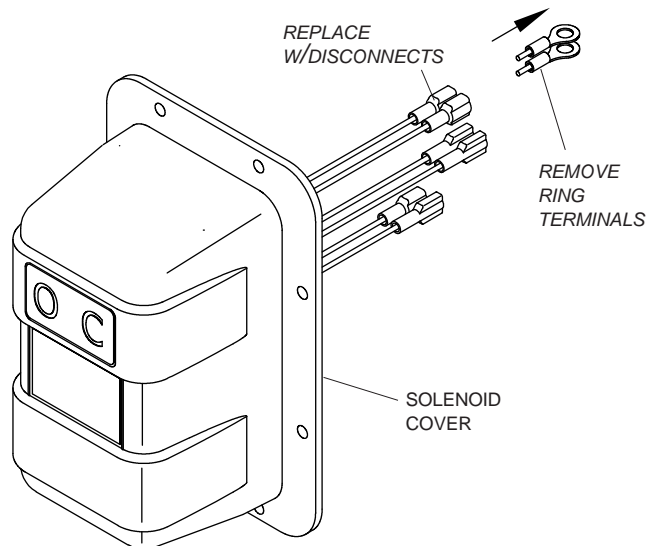
Clockwise operation: Connect 1/4" quick-disconnect on green wire to right spade on solenoid. Connect 1/4" quick disconnect on yellow wire to left spade on solenoid.

Counter-clockwise operation: Connect 1/4" quick disconnect on green wire to left spade on solenoid. Connect 1/4" quick disconnect on yellow wire to right spade on solenoid.

STEP 6: Replace solenoid cover with non-functioning cover on intermediate bracket. Fasten cover to bracket with #10 x 3/4" cap screws (from solenoid cover). Make sure no wires are pinched under flange and rubber gasket is in place.



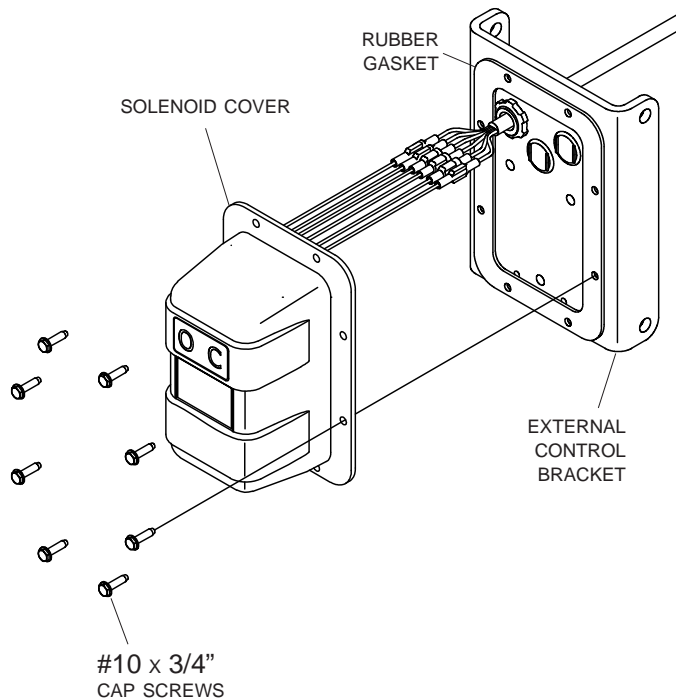
STEP 7: Remove ring terminals from wires on solenoid cover (cover removed from intermediate bracket in step 1). Replace with 1/4" male quick disconnects.



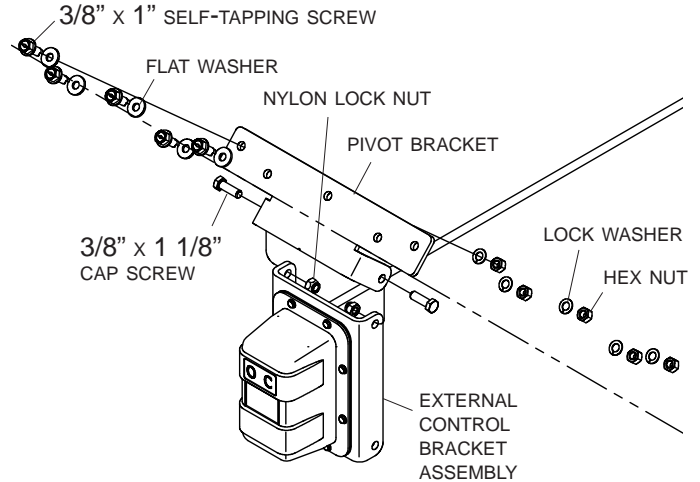
STEP 8: Connect wires between solenoid cover and 6-ga. conductor wire that will run under trailer.

- a. 1/4" quick-disconnect male red wire to 1/4" quick-disconnect female red wire.
- b. 1/4" quick-disconnect male black wire to 1/4" quick-disconnect female black wire.
- c. 3/16" quick-disconnect female red wire to 3/16" quick-disconnect male white wire.
- d. 3/16" quick-disconnect male black wire to 3/16" quick-disconnect female brown wire.
- e. 1/4" quick-disconnect female green wire to 1/4" quick-disconnect male green wire.
- f. 1/4" quick-disconnect female yellow wire to 1/4" quick-disconnect male yellow wire.

STEP 9: Using #10 x 3/4" screws included in kit, secure solenoid cover and rubber gasket to external control bracket on opposite side of trailer. Make sure no wires are pinched under flange and rubber gasket is in place.



STEP 10: Secure pivot bracket to knock rail with 3/8" x 1" self-tapping screws, flat washers, lock washers and nuts. Secure external control bracket assembly to pivot bracket with 3/8" x 1 1/8" bolt and lock nuts.



STEP 11: Use wire clips and screws to secure wire to bottom of trailer.