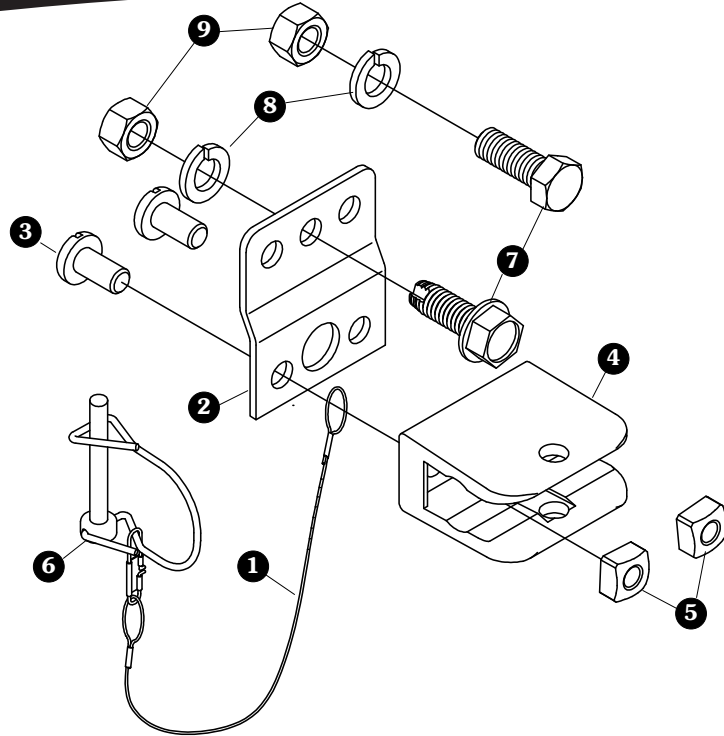
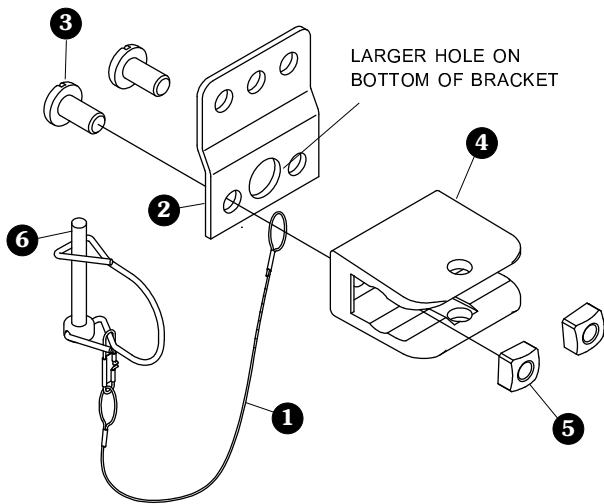


**TRAILER MOUNT OPTION**

Item	Part #	Description
1.	1100574	Cable w/Interlock Snap - SS
2.	1123660	Offset Retainer Bracket
	1123755	Offset Retainer Bracket - SS
3.	1705260	Pan Hd. Cap Screw - 3/8" x 3/4"
	1705300	Pan Hd. Cap Screw - 3/8" x 3/4" - SS
4.	1705259	Crank Retainer - Nylon
5.	1705261	Square Nut - 3/8"
	1705299	Square Nut - 3/8" - SS
6.	1705262	Wire Lock Pin - 1/4" x 2"
7.	1700400	Self-Tapping Screw - 3/8" x 1"
	1703579	Cap Screw - 3/8" x 1" - SS
8.	1700434	Lock Washer - 3/8"
	1703576	Lock Washer - 3/8" - SS
9.	1700407	Hex Nut - 3/8"
	1200999	Hex Nut - 3/8" - SS

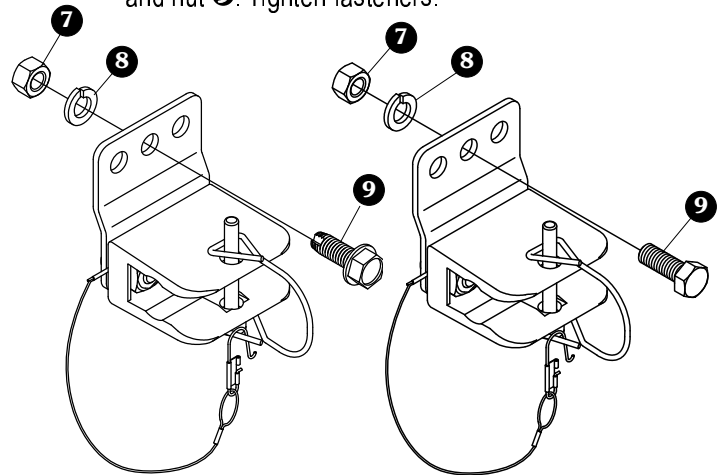


**STEP 1:** Fasten components as shown, aligning larger hole on bottom of bracket.



**STEP 2:** Determine mounting location on rear of trailer for telescoping crank retainer.

**STEP 3A: Galvanized steel option.** Use center hole in retaining bracket as guide to mark and drill 5/16" hole in trailer wall. Fasten with galvanized steel screw (7), washer (8) and nut (9). Tighten fasteners.

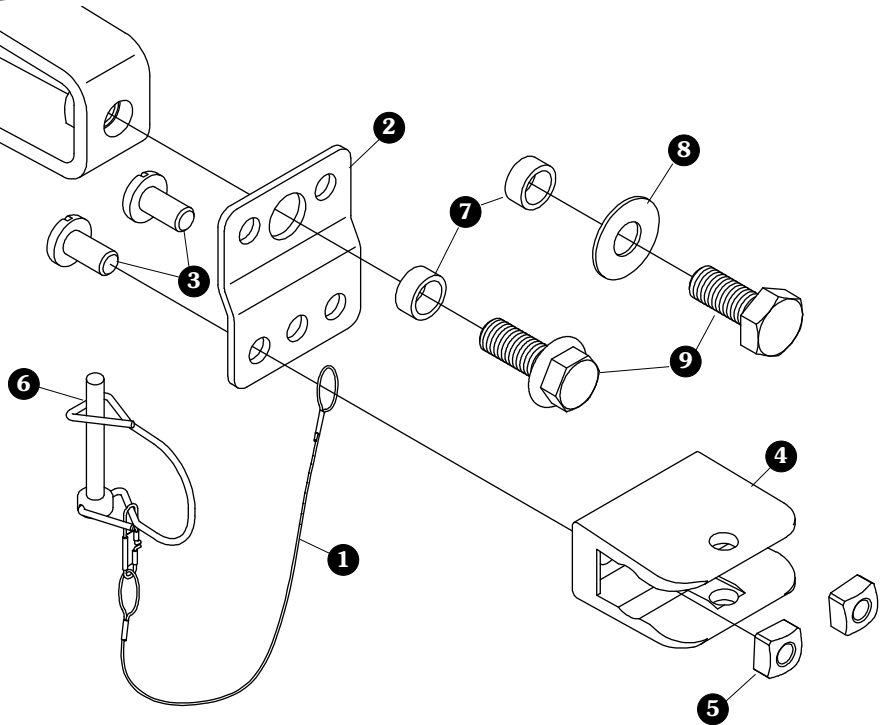


**STEP 3B: Stainless steel option.** Use center hole in retaining bracket as guide to mark and drill 13/32" hole in trailer wall. Fasten with stainless steel screw (7), washer (8) and nut (9). Tighten fasteners.

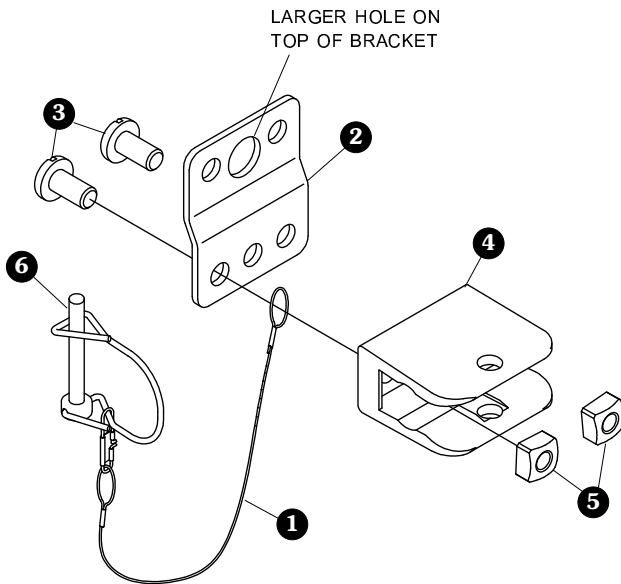
EXISTING CRANK  
RETAINER STANDOFF

**STANDOFF MOUNT OPTION**

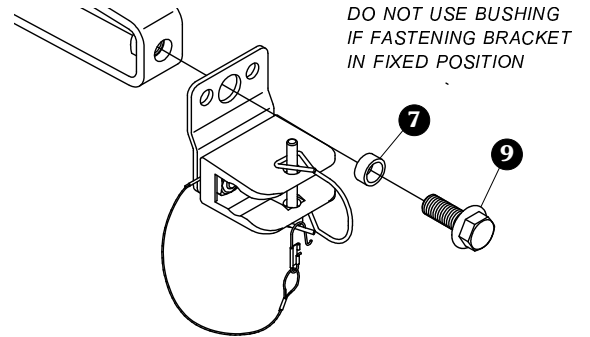
Item	Part #	Description
1.	1100574	Cable w/Interlock Snap - SS
2.	1123660	Offset Retainer Bracket
	1123755	Offset Retainer Bracket - SS
3.	1705260	Pan Hd. Cap Screw - 3/8" x 3/4"
	1705300	Pan Hd. Cap Screw - 3/8" x 3/4" - SS
4.	1705259	Crank Retainer - Nylon
5.	1705261	Square Nut - 3/8"
	1705299	Square Nut - 3/8" - SS
6.	1705262	Wire Lock Pin - 1/4" x 2"
7.	1100306	Bushing - 11/16" x .51" x 5/16"
8.	1703620	Flat Washer - 1/2" - SS
9.	1702996	Flanged Cap Screw - 1/2" x 1 1/4"
	1703619	Cap Screw - 1/2" x 1 1/4" - SS



**STEP 1:** Fasten components as shown, aligning larger hole on top of bracket.



**STEP 2A: Galvanized steel option.** Fasten telescoping crank retainer to existing crank retainer standoff on rear of trailer with screw 9 and bushing 7. Tighten fasteners.



**STEP 2B: Stainless steel option.** Fasten telescoping crank retainer to existing crank retainer standoff on rear of trailer with screw 9, washer 8 and bushing 7. Tighten fasteners.

