



**TARP SYSTEMS & ACCESSORIES**

READ BEFORE INSTALLING

P/N 1124105 Rev. D



# **Wiring 4500 Series & One AutoTrap™**

## **INSTALLATION INSTRUCTIONS**

2309 SHUR-LOK STREET • YANKTON, SD 57078-0713  
PHONE: 1-800-SHUR-LOK (1-800-474-8756) • FAX: 1-605-665-0501  
**www.SHURCO.com**

**SHOP ONLINE: [www.SHOPSHURCO.com](http://www.SHOPSHURCO.com)**

## Scan QR Code

ORDER  
TERMS AND CONDITIONS



WARRANTY



PATENTS

**SHUR-CO<sup>®</sup>, LLC SERVICE AND DISTRIBUTION CENTERS**

**SHUR-CO<sup>®</sup> CORPORATE HQ**  
2309 Shur-Lok Street, Yankton  
**800-729-2969**  
Fax: 605-665-0501

**SHUR-CO<sup>®</sup> of FLORIDA**  
3353 SE Gran Park Way, Stuart  
**800-327-8287**  
Fax: 772-287-0431

**SHUR-CO<sup>®</sup> of CANADA**  
490 Elgin Street, Unit 2  
Brantford, Ontario N3S 7P8  
**800-265-0823**  
Fax: 519-751-3997

**SHUR-CO<sup>®</sup> of IDAHO**  
921 Garber Street, Caldwell  
**208-455-1046**  
Fax: 208-455-1046

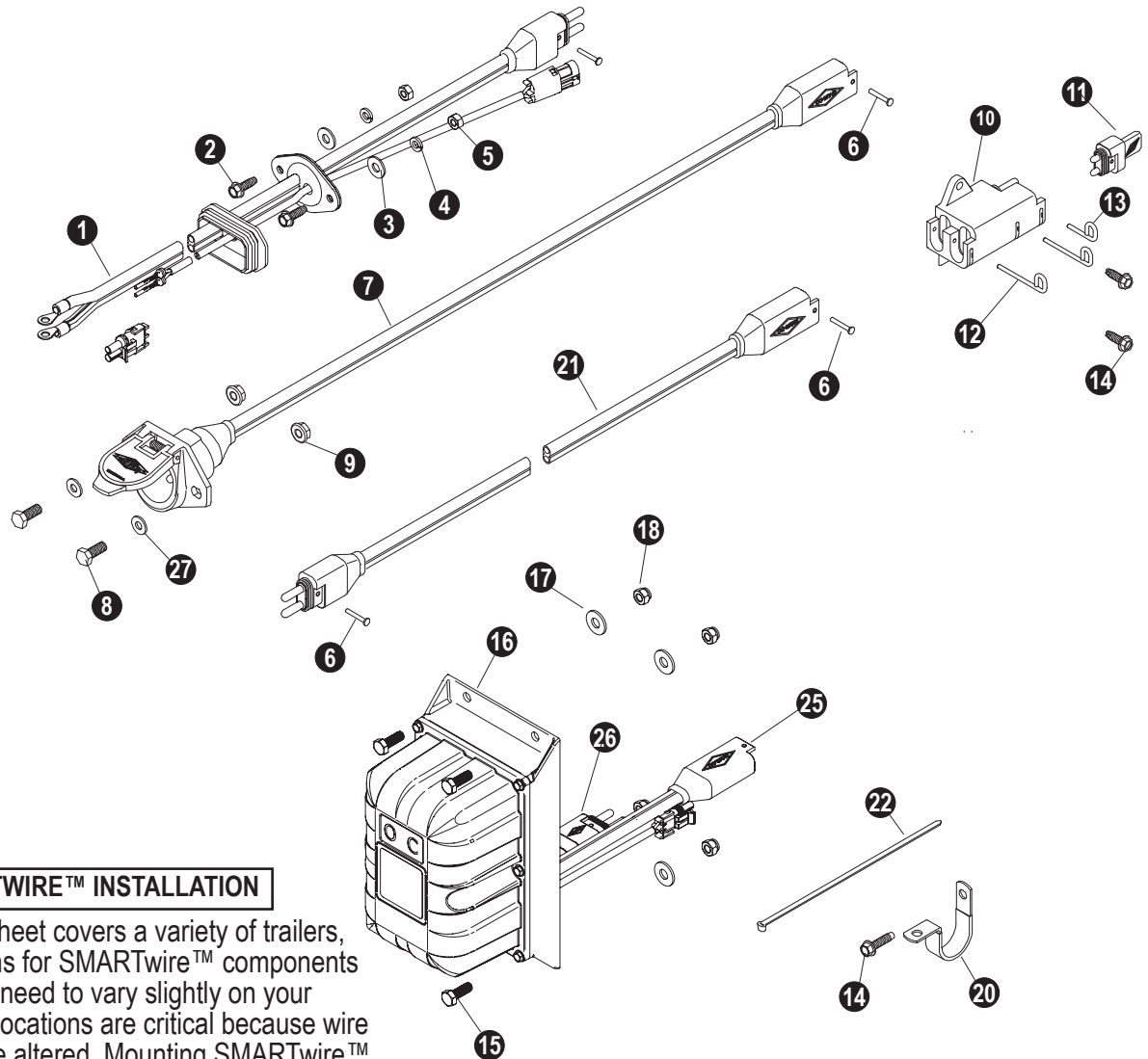
**SHUR-CO<sup>®</sup> of OHIO**  
4676 Lynn Road, Rootstown  
**866-356-0242**  
Fax: 330-297-5599

**SHUR-CO<sup>®</sup> of SOUTH DAKOTA**  
1212 N. Norbeck St., Vermillion, SD  
**605-658-1020**  
Fax: 605-658-1022

**SHUR-CO<sup>®</sup> of ILLINOIS**  
3993 E. Mueller Avenue, Decatur  
**866-356-0246**  
Fax: 217-877-8270

**SHUR-CO<sup>®</sup> of NORTH DAKOTA**  
1746 4th Avenue. NW, West Fargo  
**877-868-4488**  
Fax: 701-277-1284

**SHUR-CO<sup>®</sup> UK LIMITED**  
Unit 41, Rochester Airport Estate  
Laker Road  
Rochester, Kent ME1 3QX

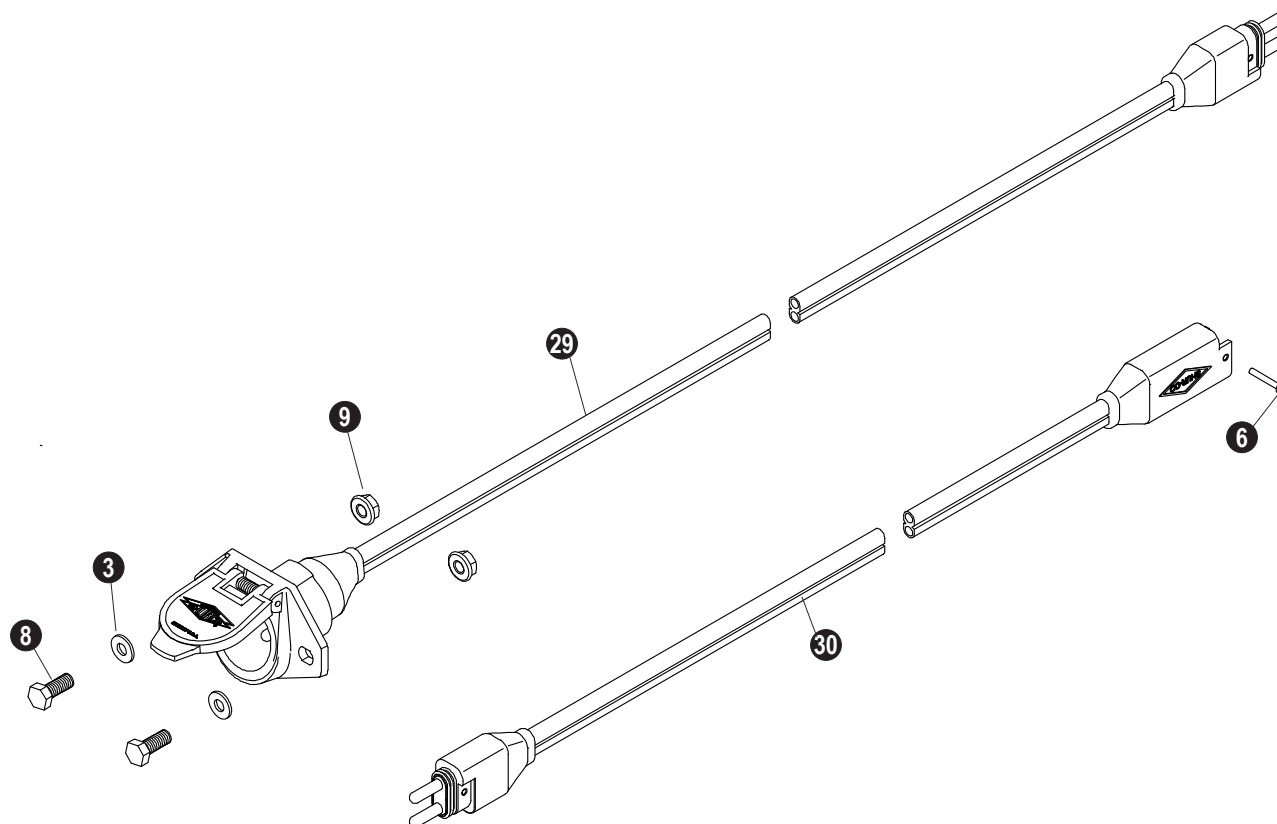


### SMARTWIRE™ INSTALLATION

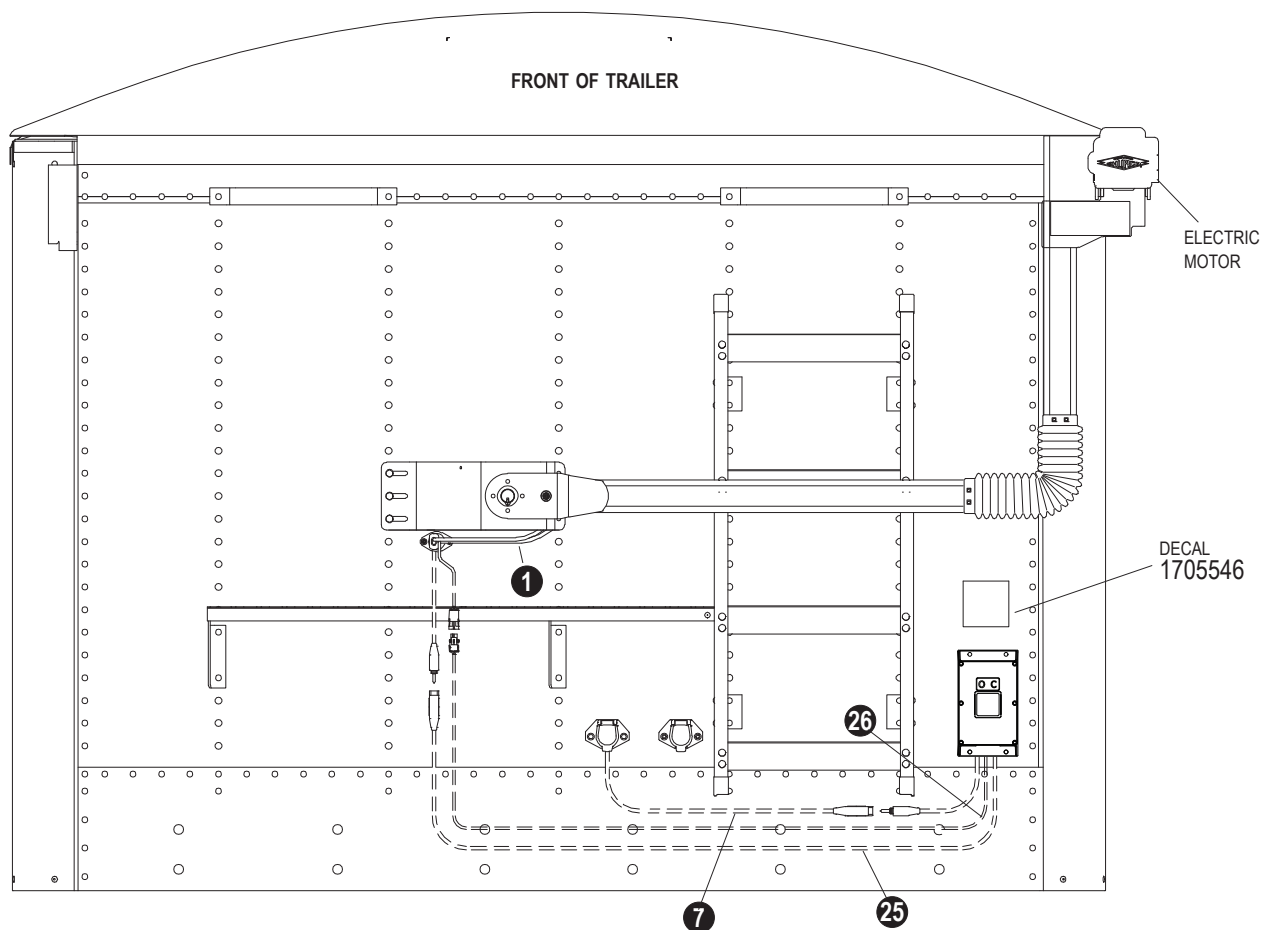
This instruction sheet covers a variety of trailers, therefore locations for SMARTwire™ components shown here may need to vary slightly on your trailer. Mounting locations are critical because wire lengths cannot be altered. Mounting SMARTwire™ components as close as possible to locations shown will not only ensure quick and easy installation but also facilitate SMARTwire™ upgrades.

Item	Part #	Description
1.		SMARTwire™ - 6 Ga. - Plug - 9' 9" w/Encoder Wire
2.	1700403	Self-Tapping Screw - 1/4" x 3/4"
3.	1700427	Flat Washer - 1/4"
4.	1700436	Lock Washer - 1/4"
5.	1700408	Hex Nut - 1/4"
6.	1704751	Harness Lock Pin - 1/4" x 7/8"
7.	1120670	SMARTwire™ Dual-Conductor Socket
8.	1701045	Cap Screw - 5/16" x 3/4"
9.	1704946	Flanged Top Lock Nut - 5/16"
10.	1704695	Harness Junction Block
11.	1704717	Wire Harness Rubber Plug
12.	1704696	Harness Lock Pin - Long

Item	Part #	Description
13.	1704711	Harness Lock Pin - Short
14.	1704338	Self-Tapping Screw - 1/4" x 1"
15.	1702926	Cap Screw - 5/16" x 7/8"
16.		ShurLink™ Receiver
17.	1700428	Flat Washer - 5/16"
18.	1700419	Lock Nut - 5/16"
20.	1702108	Wire Clip - 3/4"
21.	1704704	SMARTwire™ - 6 Ga. x 25' - Plug/Socket
22.	1703231	Cable Tie - 8"
25.	1120817	SMARTwire™ - 6 Ga. x 6' 3" - Socket
26.	1704705	SMARTwire™ - 6 Ga. x 2' 4" - Plug
27.	1700427	Flat Washer - 1/4"

**LEAD TRAILER WIRING PARTS FOR SUPPLYING  
POWER TO REAR/PUP TRAILERS**

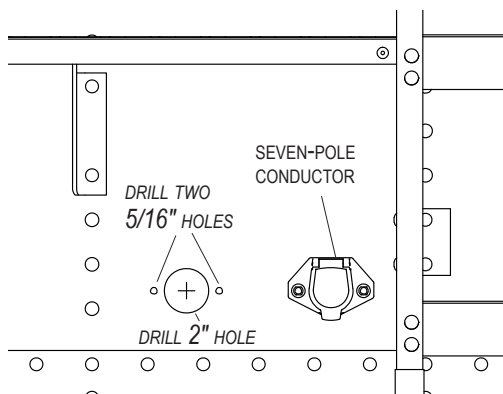
Item	Part #	Description
3.	1700427	Flat Washer - 1/4"
6.	1704751	Harness Lock Pin - 1/4" x 7/8"
8.	1701045	Cap Screw - 5/16" x 3/4"
9.	1704946	Flanged Top Lock Nut - 5/16"
29.	1122541	SMARTwire™ - 4 Ga. x 22' - Dual-Conductor Socket
	1122542	SMARTwire™ - 4 Ga. x 32' - Dual-Conductor Socket
	1122543	SMARTwire™ - 4 Ga. x 40' - Dual-Conductor Socket
30.	1704888	SMARTwire™ - 4 Ga. x 25' - Plug/Socket



**NOTE:** Wire lengths are predetermined. Before installing SMARTwire™ components, review and confirm wire routing so wires reach components with ample room for connection.

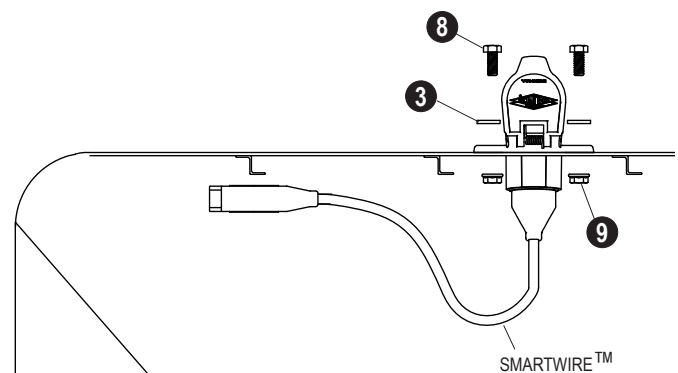
### DUAL-POLE CONDUCTOR SOCKET INSTALLATION

**STEP 1:** Locate dual-pole conductor socket near seven-pole conductor socket as shown. Determine location and drill 2 inch hole through trailer skin.



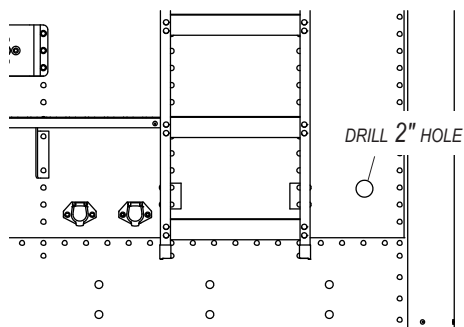
**STEP 2:** Align socket over 2 inch hole. Using holes in flanges on socket as guide, mark and drill two 5/16 inch holes.

**STEP 3:** Fasten conductor socket to trailer with screws (8), flat washers (3) and nuts (9).

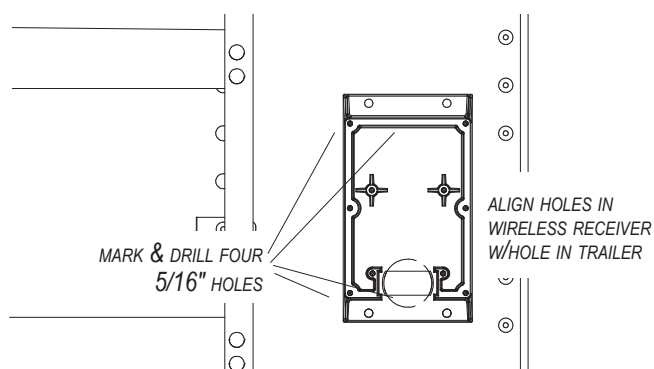


**SHUR-CO® WIRELESS RECEIVER INSTALLATION**

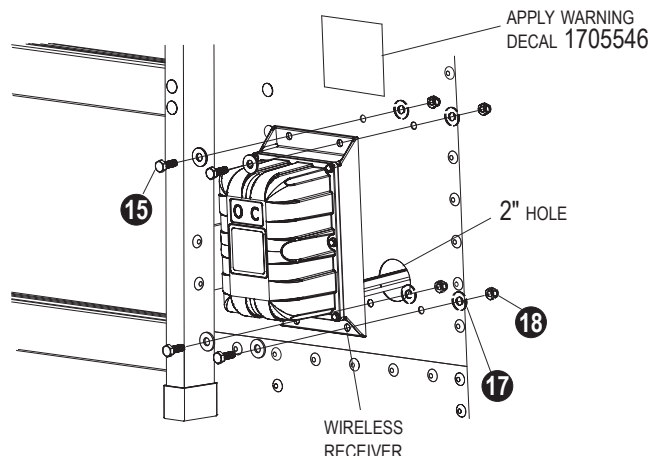
**STEP 1:** In order to clear travel area of front arm, locate Shur-Co® wireless receiver as low as possible on front of trailer. Determine location and drill 2 inch hole through trailer skin.



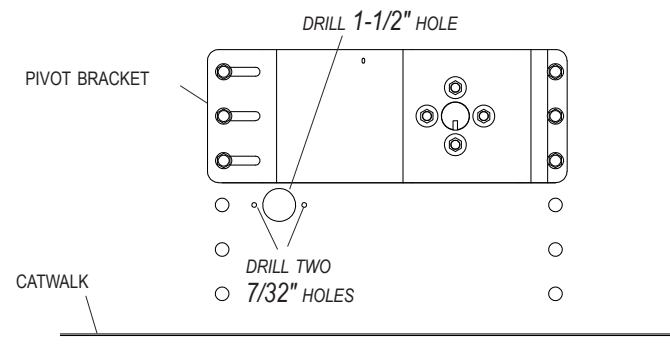
**STEP 2:** Align holes in wireless receiver over 2 inch hole in trailer as shown below. Using holes on flanges on receiver as guide, mark and drill four 5/16 inch holes as shown.



**STEP 3:** Align holes on wireless receiver with holes on trailer. Fasten receiver to trailer with cap screws (15), washers (17) and nuts (18). Apply warning decal P/N 1705546 above receiver in locations shown.

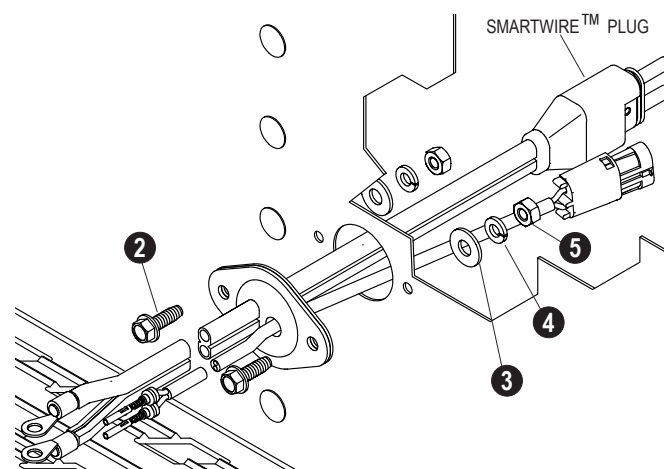
**ADAPTER PLUG INSTALLATION**

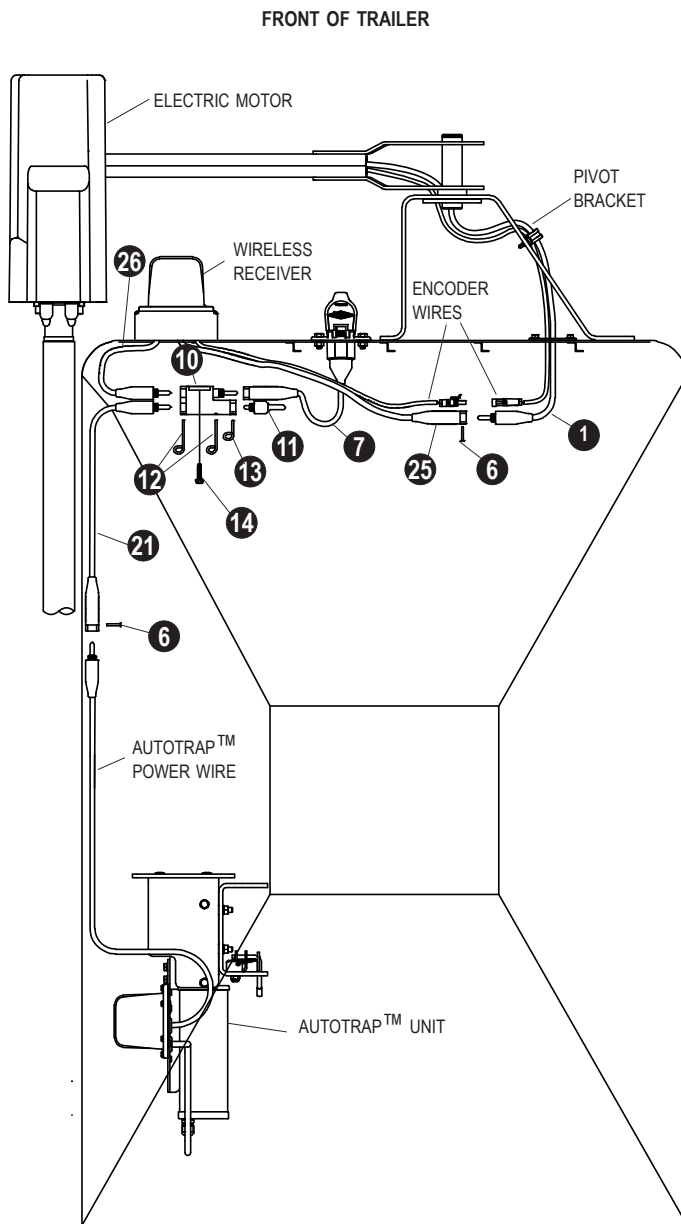
**STEP 1:** Measure 11 inches horizontally from center line of trailer and 1 inch down from lower edge of pivot bracket. Mark and drill 1-1/2 inch hole through trailer skin.



**STEP 2:** Align adapter plug with 1-1/2 inch hole. Using plug as guide, mark and drill two 7/32 inch holes as shown.

**STEP 3:** Fasten adapter plug to front of trailer with screws (2), flat washers (3), lock washers (4) and nuts (5).





**NOTE:** Coat each connection with dielectric grease (P/N 1704378) to prevent corrosion.

## ⚠ CAUTION

**Do not fasten SMARTwire™ components to trailer through hopper walls.**

**STEP 1:** Route SMARTwire™ (25) from wireless receiver to adapter plug (1). Connect wire to adapter plug and secure with lock pin (6). Connect encoder wire ends.

**STEP 2:** To determine location of front junction block, route SMARTwires (7) and (26) to a location where wires reach. Mount junction block (10) at this location. Using holes in junction block as guide, mark and drill two 7/32 inch holes.

**STEP 3:** Fasten junction block (10) to trailer with screws (14).

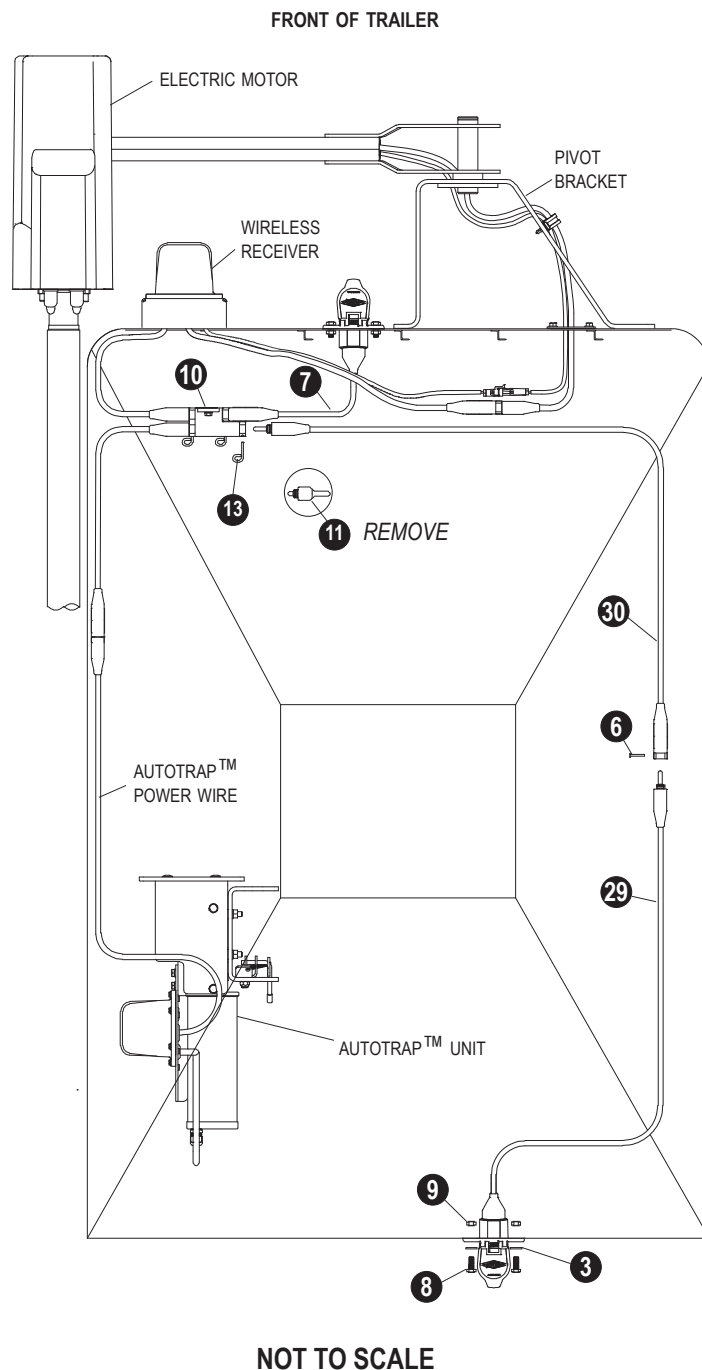
**STEP 4:** Connect SMARTwires (7), (21) and (26) to junction block (10). Insert plug (11) into remaining socket. Secure connections with lock pins (12) and (13).

**STEP 5:** Route SMARTwire™ (21) from front of trailer toward AutoTrap™ unit.

**STEP 6:** Connect SMARTwire™ (21) to AutoTrap™ power wire and secure with lock pin (6).

**STEP 7:** Secure all wires to trailer with cable clips (20) and screws (14). If needed, use cable ties (22) (shown on PAGE 2).

**NOTE:** For lead/pup trailer configurations, continue on next page.



**NOTE:** Coat each connection with dielectric grease (P/N 1704378) to prevent corrosion.

## CAUTION

**Do not fasten SMARTwire™ components to trailer through hopper walls.**

### FRONT OF TRAILER

**STEP 1:** Follow wiring instructions on previous page.

**STEP 2:** Route SMARTwire™ (30) towards rear of trailer and plug into junction block (10). Secure with lock pin (13).

### REAR OF TRAILER

**STEP 3:** To determine location for conductor socket (29) on rear of trailer, route SMARTwire™ (30) and SMARTwire™ from conductor socket (29) to location near middle of trailer, where wires reach. Mount conductor socket at this location.

**STEP 4:** Follow STEPS 1 to 3 on page 3 to install conductor socket (29).

### MIDDLE OF TRAILER

**STEP 5:** Connect SMARTwires (30) and (29). Secure with lock pin (6).

**STEP 6:** Secure all wires to trailer with cable clips (20) and screws (14). If needed, use cable ties (22) (shown on page 2).









---

2309 SHUR-LOK STREET • YANKTON, SD 57078-0713  
PHONE: 1-800-SHUR-LOK (800-474-8756) • FAX: 1-605-665-0501  
**[www.SHURCO.com](http://www.SHURCO.com)**

---