



TARP SYSTEMS & ACCESSORIES

READ BEFORE INSTALLING

P/N 1125399 Rev. D



POWERED BY: SHUR-CO®

# Tarp System for Front Mount Bin

## OWNER'S MANUAL

2309 SHUR-LOK STREET • YANKTON, SD 57078-0713  
PHONE: 1-800-SHUR-LOK (1-800-474-8756) • FAX: 1-605-665-0501  
[www.SHURCO.com](http://www.SHURCO.com)

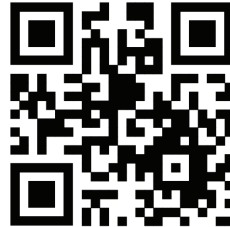
SHOP ONLINE: [www.SHOPSHURCO.com](http://www.SHOPSHURCO.com)

## Scan QR Code

LEGAL



WARRANTY



PATENTS

**SHUR-CO<sup>®</sup>, LLC SERVICE AND DISTRIBUTION CENTERS**

**SHUR-CO<sup>®</sup> CORPORATE HQ**  
2309 Shur-Lok Street, Yankton  
**800-729-2969**  
Fax: 605-665-0501

**SHUR-CO<sup>®</sup> of FLORIDA**  
3353 SE Gran Park Way, Stuart  
**800-327-8287**  
Fax: 772-287-0431

**SHUR-CO<sup>®</sup> of CANADA**  
490 Elgin Street, Unit 2  
Brantford, Ontario N3S 7P8  
**800-265-0823**  
Fax: 519-751-3997

**SHUR-CO<sup>®</sup> of IDAHO**  
921 Garber Street, Caldwell  
**208-455-1046**  
Fax: 208-455-1046

**SHUR-CO<sup>®</sup> of OHIO**  
4676 Lynn Road, Rootstown  
**866-356-0242**  
Fax: 330-297-5599

**SHUR-CO<sup>®</sup> of SOUTH DAKOTA**  
1212 N. Norbeck St., Vermillion, SD  
**605-658-1020**  
Fax: 605-658-1022


**SHUR-CO<sup>®</sup> of ILLINOIS**  
3993 E. Mueller Avenue, Decatur  
**866-356-0246**  
Fax: 217-877-8270

**SHUR-CO<sup>®</sup> of NORTH DAKOTA**  
1746 4th Avenue. NW, West Fargo  
**877-868-4488**  
Fax: 701-277-1284

**SHUR-CO<sup>®</sup> UK LIMITED**  
Unit 41, Rochester Airport Estate  
Laker Road  
Rochester, Kent ME1 3QX

**MESSAGE TO OWNERS**

Thank you for buying this tarping system from Shur-Co®. We appreciate your confidence in our products. Please read and thoroughly understand this manual before installing and/or operating this system.

Pay particular attention to important safety and operating instructions, as well as warnings and cautions. The hazard symbol  is used to alert users to potentially hazardous conditions and is followed by caution, warning or danger messages.

Failure to READ AND FOLLOW INSTRUCTIONS could result in failure of your tarping system and/or personal injury. Your trailer requirements may, however, call for minor variations to these instructions.

Please inspect your tarping system periodically. Repair or replace worn or damaged parts to your system.

**QUESTIONS? CALL OUR HELP LINE:**  
**1-866-748-7435**  
**MON-FRI 8 AM-5 PM CENTRAL TIME**

**SAFETY**

We at Shur-Co® are concerned with your safety and the safety of all those operating this system. Therefore, we have provided safety decals at various locations on your tarping system. Keep decals as clean as possible at all times. Replace any decal that has become worn or damaged, painted over or otherwise difficult to read. Replacement decals are available through Shur-Co® dealers.

**SAFETY INSTRUCTIONS**

1. Always wear safety glasses during installation and operation.
2. Stay clear of moving parts.
3. Do not operate under low-hung power lines. Always check for overhead obstructions before opening or closing.
4. Open and close tarp only at the job site.
5. Use caution when operating tarp system in windy conditions. Face vehicle into wind when opening and closing tarp.
6. Place safety decals in visible locations. Replace worn or damaged decals.
7. No other use of this system is authorized, except as designed.

**TABLE OF CONTENTS**

Hardware Identification .....	4
Mounting Locations .....	5
Tarp Housing Installation .....	6
Pull Bar Hook Installation .....	7
Tarp Installation .....	8
Pull Bar Assembly .....	9
Rope & Box Hook Installation .....	10
Spring Tension Setting .....	11
Replacement Parts .....	12-13

**TOOLS REQUIRED**

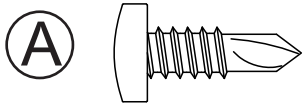
1. Wrenches - 1/2", 9/16", 7/8"
2. Ratcheting Socket Wrench
3. Sockets - 1/2", 9/16"
5. Drill Bit (metal cutting) - 5/16", 1/4"
6. Center Punch
7. Hammer
8. Tape Measure
10. Grinder
11. Air or Electric Impact Wrench w/9/16" Socket

**MAINTENANCE**

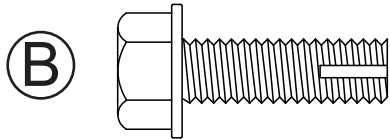
- Tighten any loose bolts.
- Replace worn/damaged/bent parts.
- Replace/repair worn or damaged tarps.

**RUST PREVENTION**

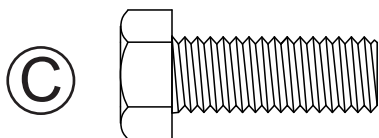
To prevent rust, paint all exposed metal, such as weld seams and/or metal exposed by grinding or cutting, with corrosion-resistant paint.



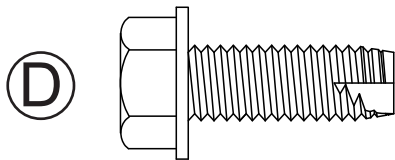
1700398 Self-Drilling Screw - 1/4" x 3/4"



1701059 Self-Tapping Screw - 5/16" x 1"



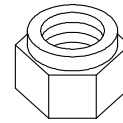
1701061 Cap Screw - 3/8" x 1"



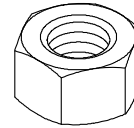
1700400 Self-Tapping Screw - 3/8" x 1"



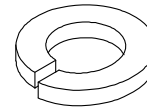
1704454 Nylon Lock Nut - 5/16"



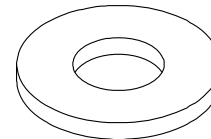
1700407 Hex Nut - 3/8"



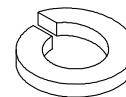
1700433 Lock Washer - 5/16"



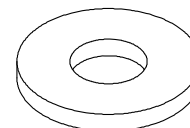
1700428 Flat Washer - 5/16"



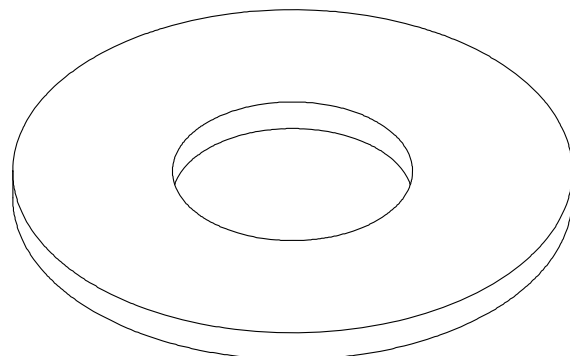
1700434 Lock Washer - 3/8"



1700429 Flat Washer - 3/8"

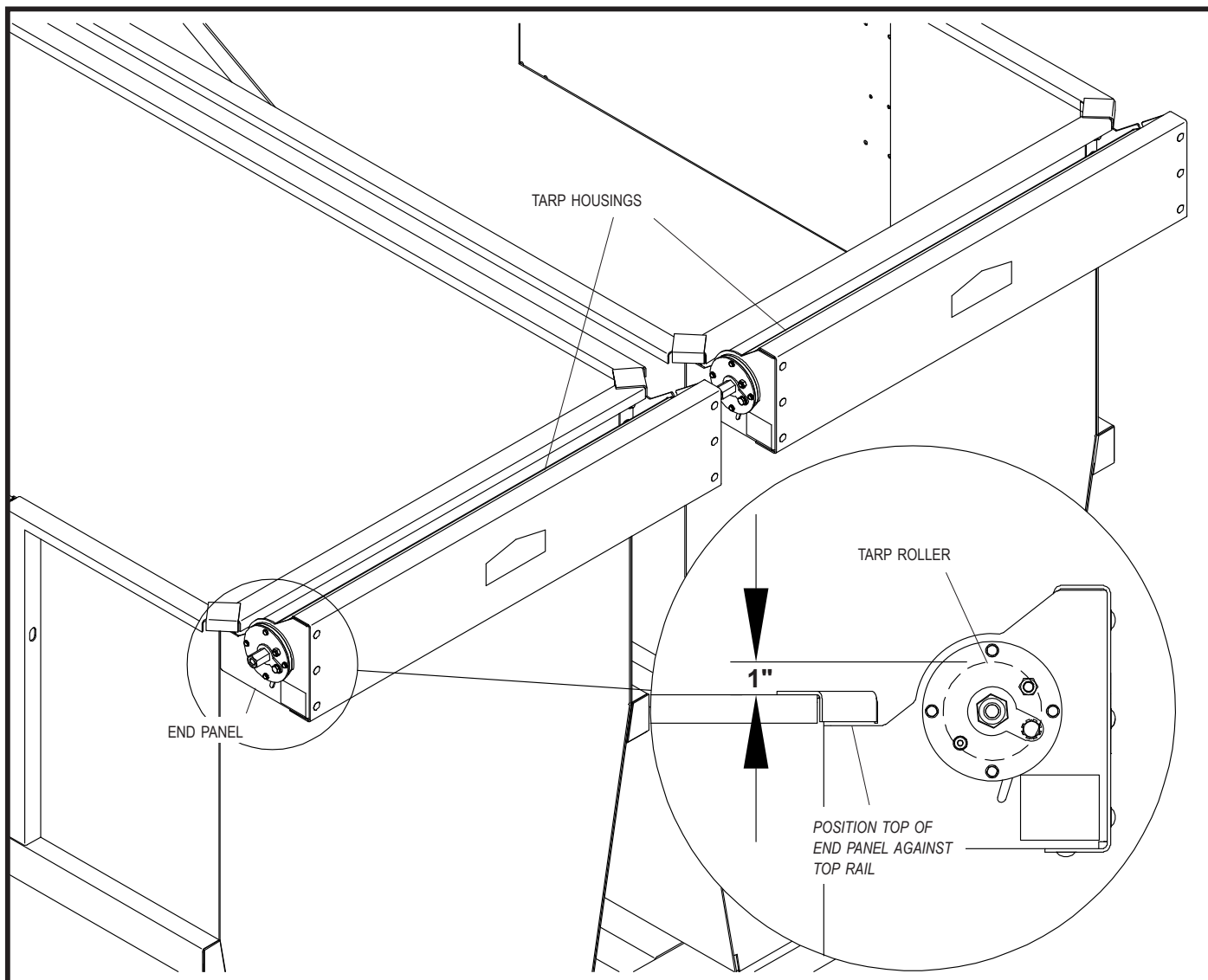


1701209 Flat Washer - 1-1/8"

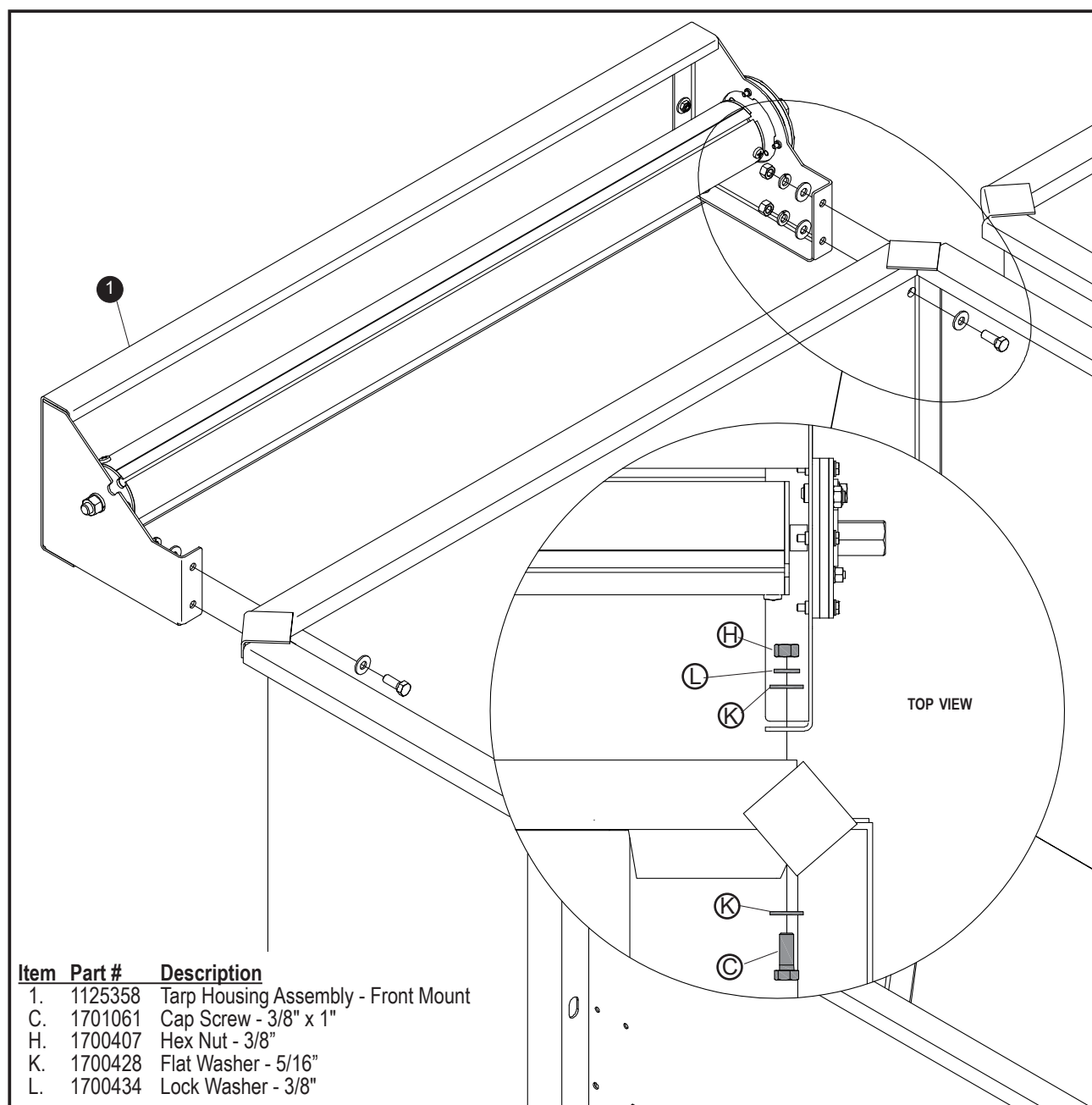


**STEP 1:** Mount tarp housing on front of bin. Position housing as shown, with top of tarp spool end panels close to or against underside of top rail.

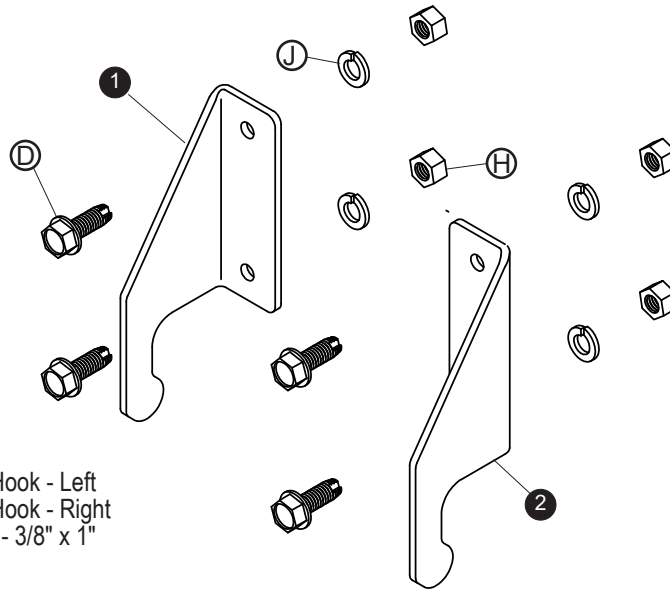
**NOTE:** Top of tarp roller should be about 1" above top rail so tarp clears top rail when opening and closing.



**STEP 1:** Place tarp housing in determined mounting location. Use holes in end panels as guide, mark and drill 3/8" holes. Fasten with screws (C), flat washers (K), lock washers (L) and nuts (H).

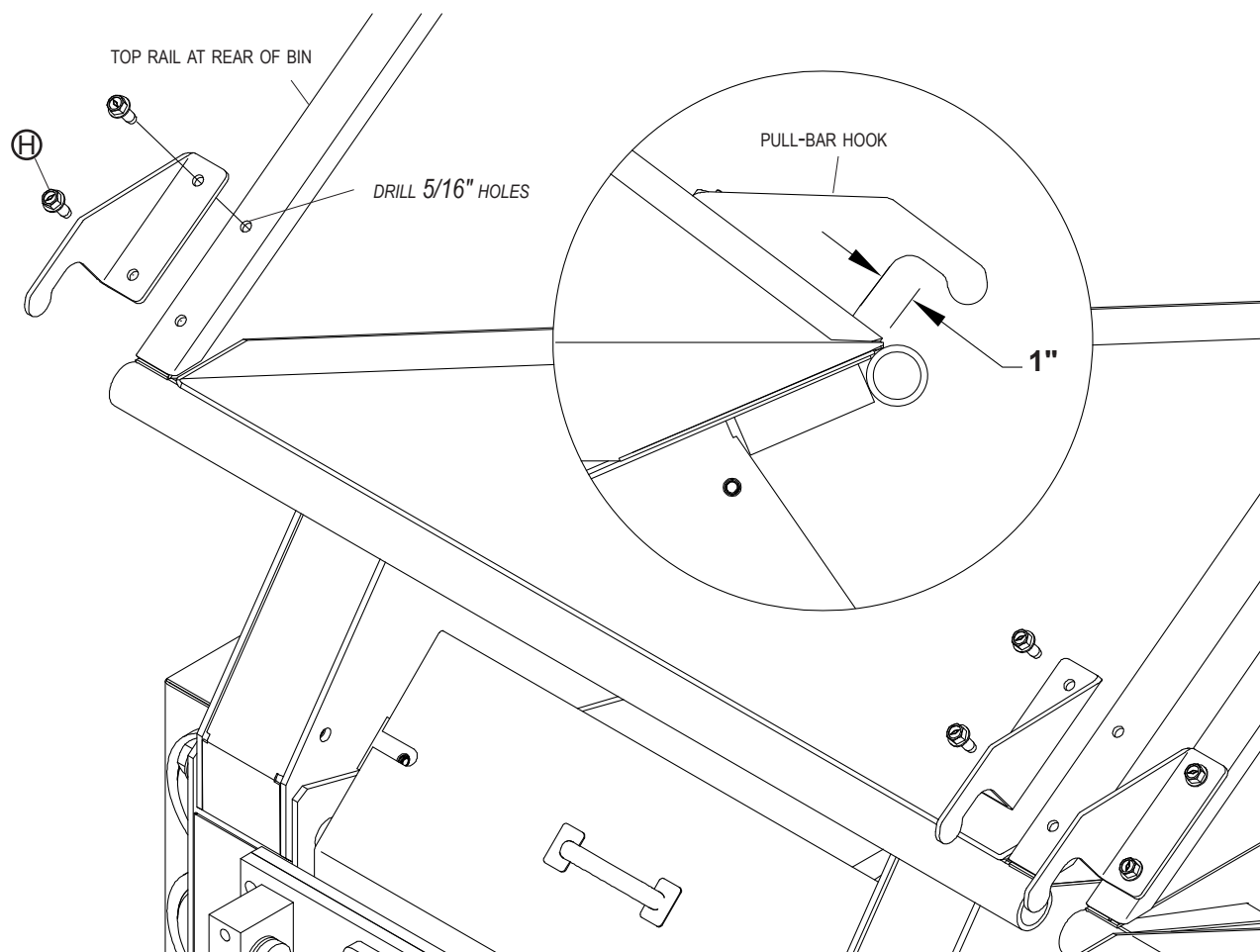


**NOTE:** To prevent rust, paint all exposed metal, such as weld seams and/or metal exposed by grinding or cutting, with corrosion-resistant paint (not necessary for unpainted aluminum boxes).

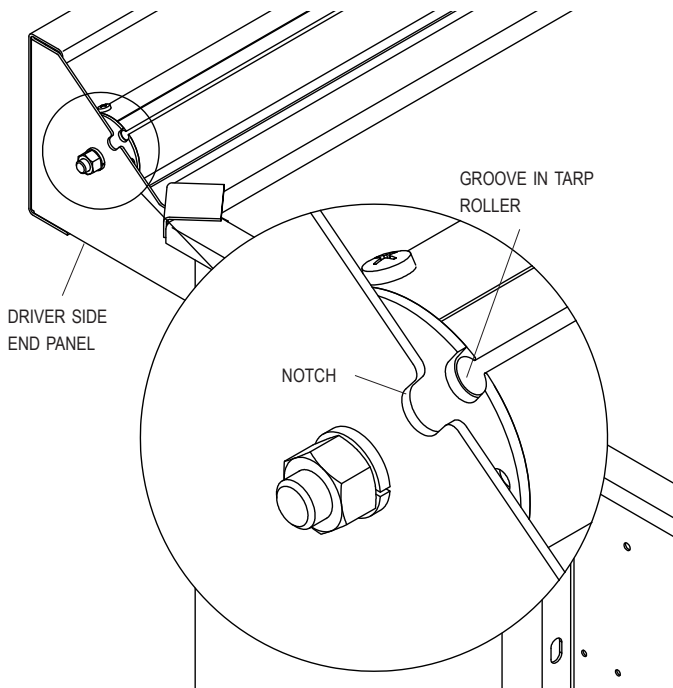


Item	Part #	Description
1.	1125159	Pull-Bar Retaining Hook - Left
2.	1125160	Pull-Bar Retaining Hook - Right
D.	1700400	Self-Tapping Screw - 3/8" x 1"
J.	1700434	Lock Washer - 3/8"
H.	1700407	Hex Nut - 3/8"

**STEP 1:** Align pull-bar hooks on top rail at rear of bin as shown. Use hook as guide to mark and drill 5/16" holes. Fasten pull-bar hooks to top rail with screws (D) or weld hooks to rail.

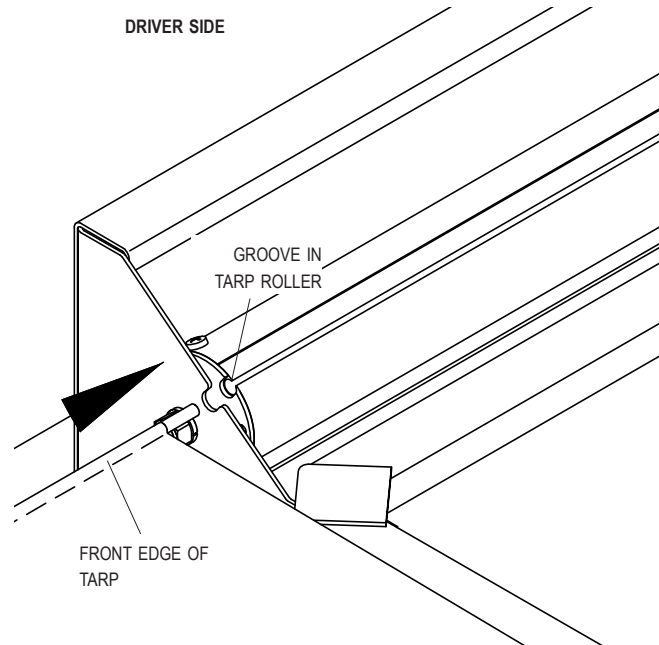


**STEP 1:** Align groove in tarp roller with notch in driver side end panel.



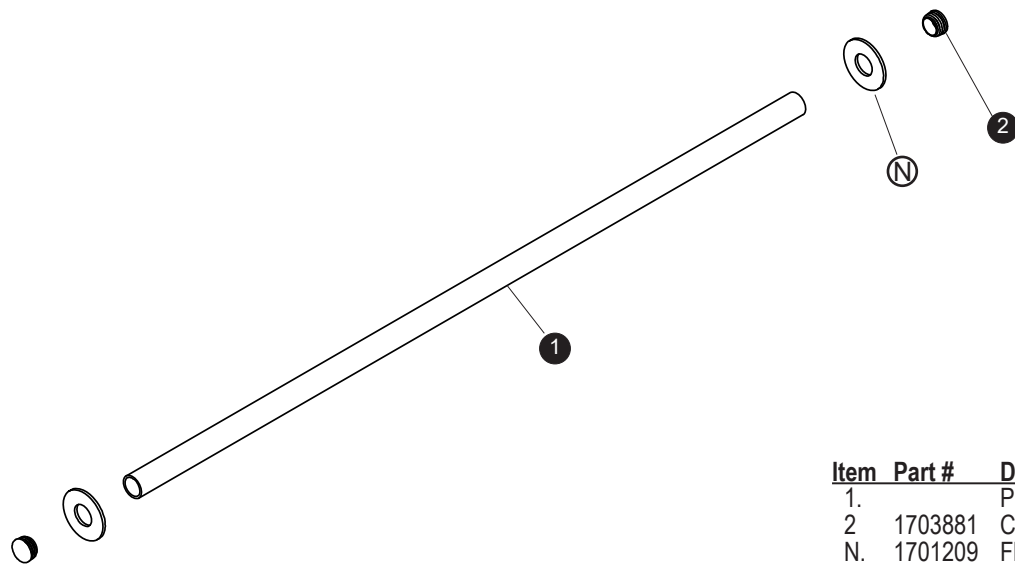
**STEP 2:** Lay out tarp, logo side up. Find front edge of tarp with plastic rod sewn in hem.

**STEP 3:** Install tarp into tarp roller. From driver side of tarp housing, slide front edge of tarp into groove in tarp roller. Center tarp on tarp roller.



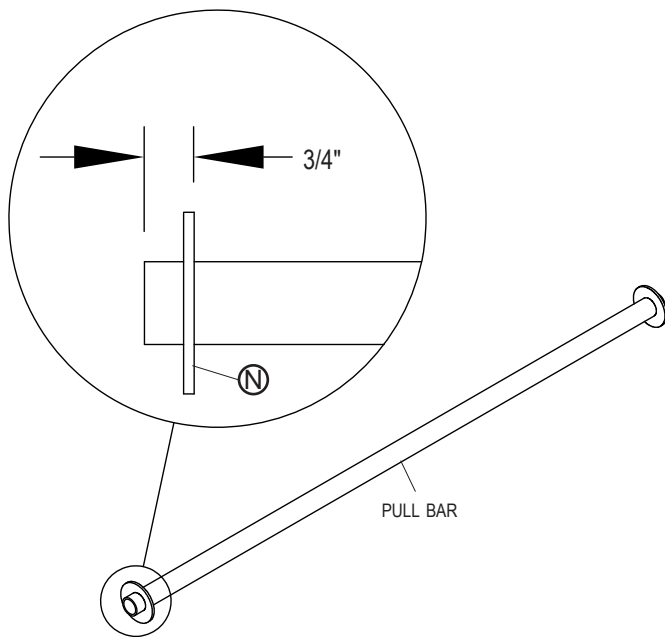
**TIP:** Before sliding tarp into tarp roller, spray tarp roller groove with silicone lubricant or soapy water to help tarp slide more easily.



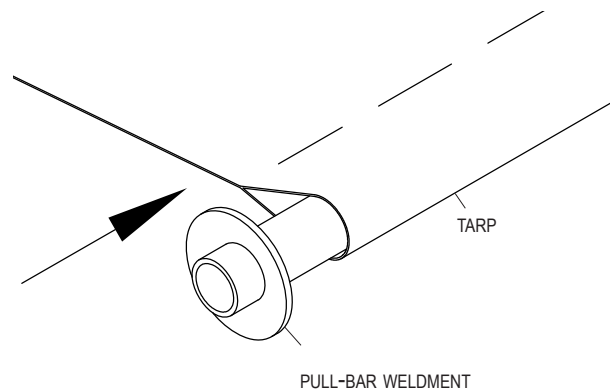


Item	Part #	Description
1.		Pull Bar
2	1703881	Cap Plug - 1-1/4"
N.	1701209	Flat Washer - 1-1/8"

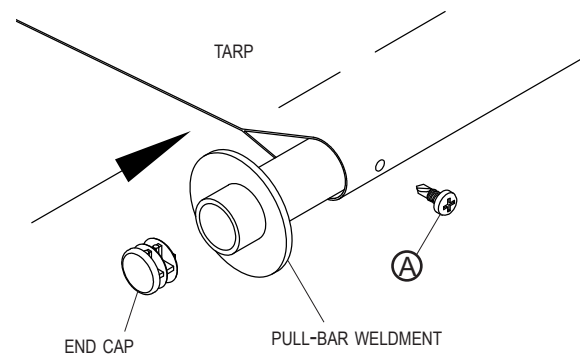
**STEP 1:** Weld washers (N) to pull bar as shown.

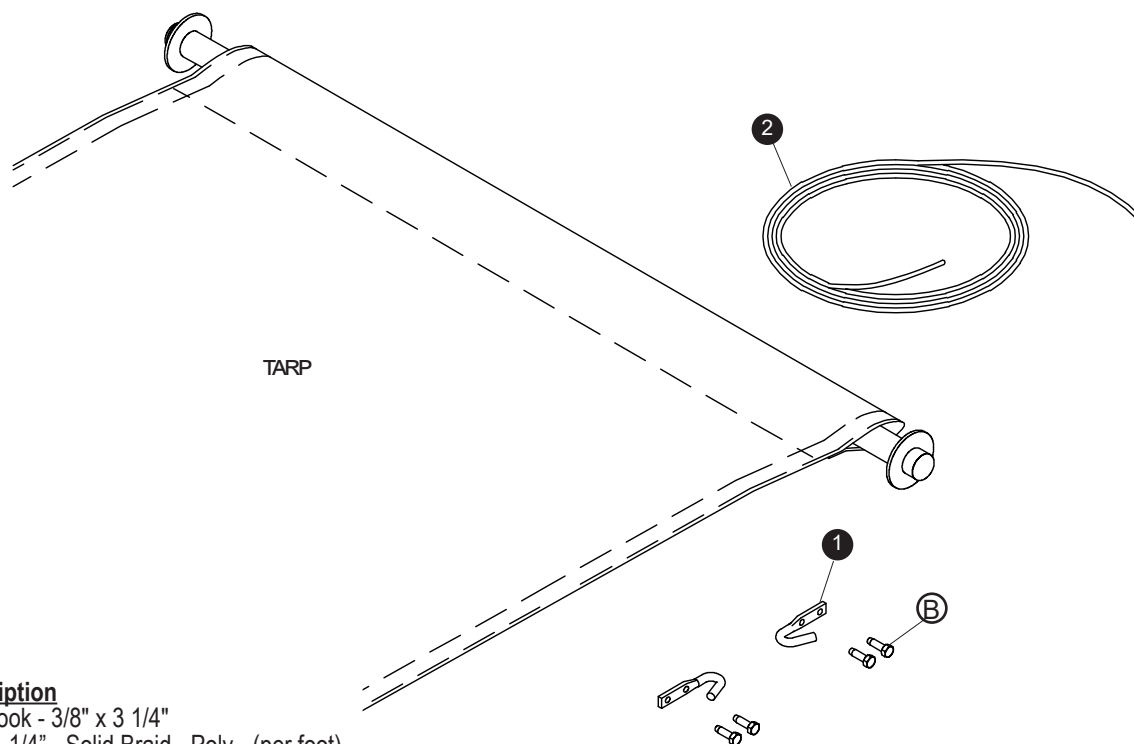


**STEP 2:** Slide pull bar weldment through rear pocket on tarp.



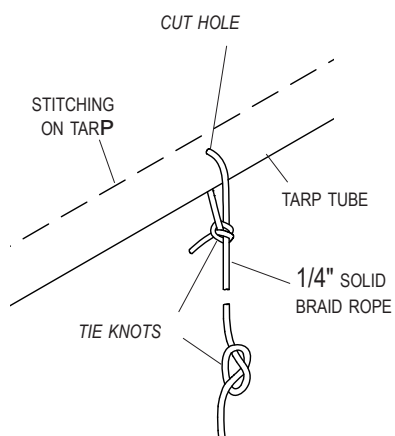
**STEP 3:** Install cap plugs into ends of pull bars. If desired, fasten tarp to pull bar with two screws (A).





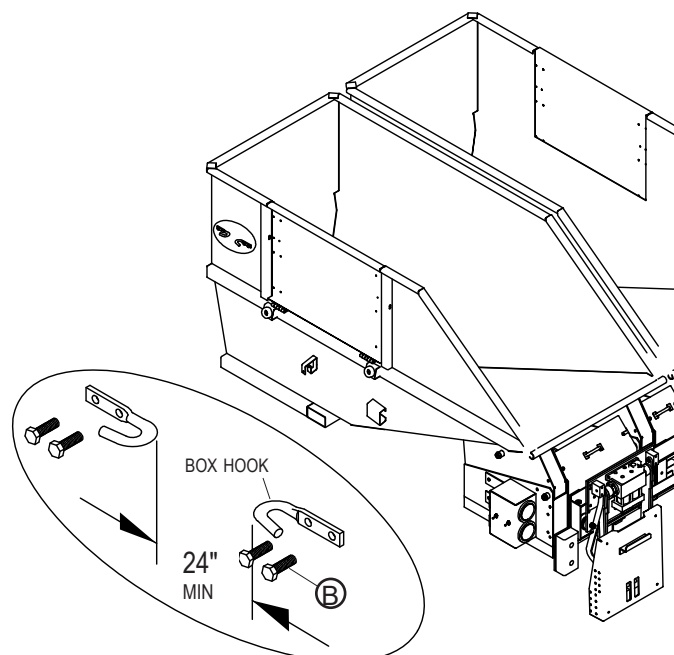
Item	Part #	Description
1.	1700682	Box Hook - 3/8" x 3 1/4"
2.	1700624	Rope - 1/4" - Solid Braid - Poly - (per foot)
B.	1701059	Self-Tapping Screw - 5/16" x 1"

**STEP 1:** Cut small hole in center of tarp just above tarp tube. Wrap rope around tarp tube and secure with knot.

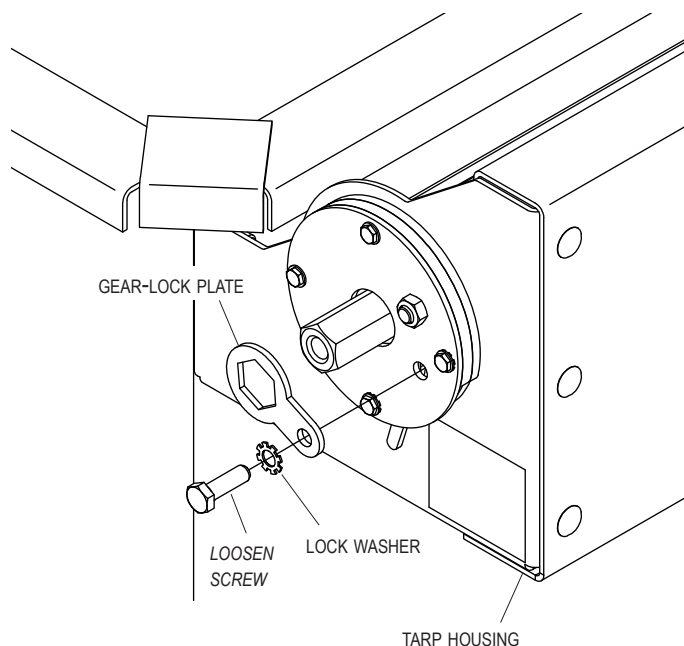


**STEP 2:** Tie knot in end of rope. Rope can be shortened later, if desired.

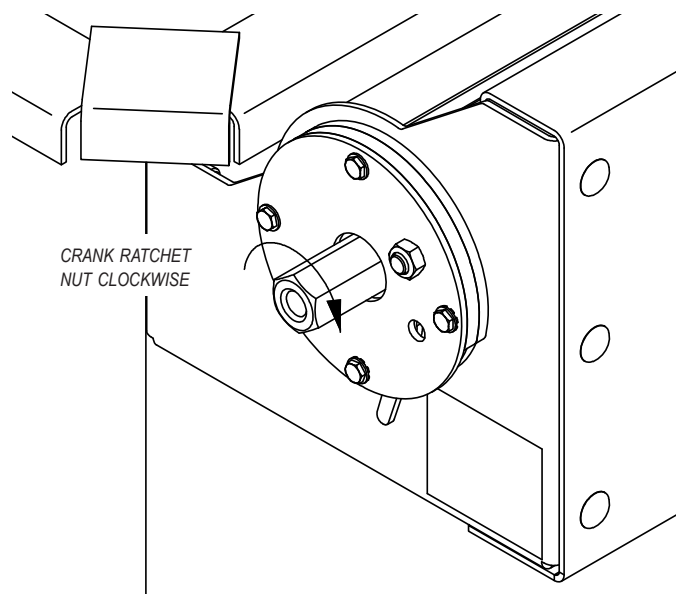
**STEP 3:** Install box hooks at rear and on side of box for rope storage. Place in convenient location, spacing at least 24" apart. Mark and drill 1/4" holes and fasten with screws (B).



**STEP 1:** Before setting tension on spring, pull tarp over tailgate as far as it will go. Secure tarp to rear of bin with rope to prevent tarp from retracting. On passenger side, loosen hardware holding gear-lock plate to tarp housing. Remove screw, lock washer and gear-lock plate.



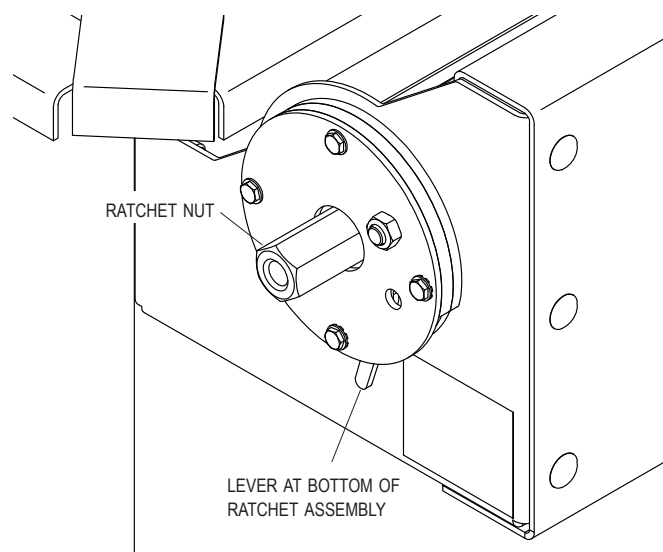
**STEP 2:** Use 7/8" wrench to crank ratchet nut clockwise and build spring tension. Turn approximately 11 to 13 turns.



**STEP 3:** Untie rope from rear of bin and open and close tarp a few times. If tarp does not fully retract, or if more tension is needed, pull tarp toward rear of bin as far as possible and secure tarp to rear of bin. Add 1 to 2 more turns to ratchet assembly and test operation again. Repeat this procedure until you reach desired spring tension. Do not exceed 24 turns.

**STEP 4:** When spring tension is adequate, reinstall gear-lock plate and fasten plate to tarp housing by replacing lock washer and screw, tightening securely.

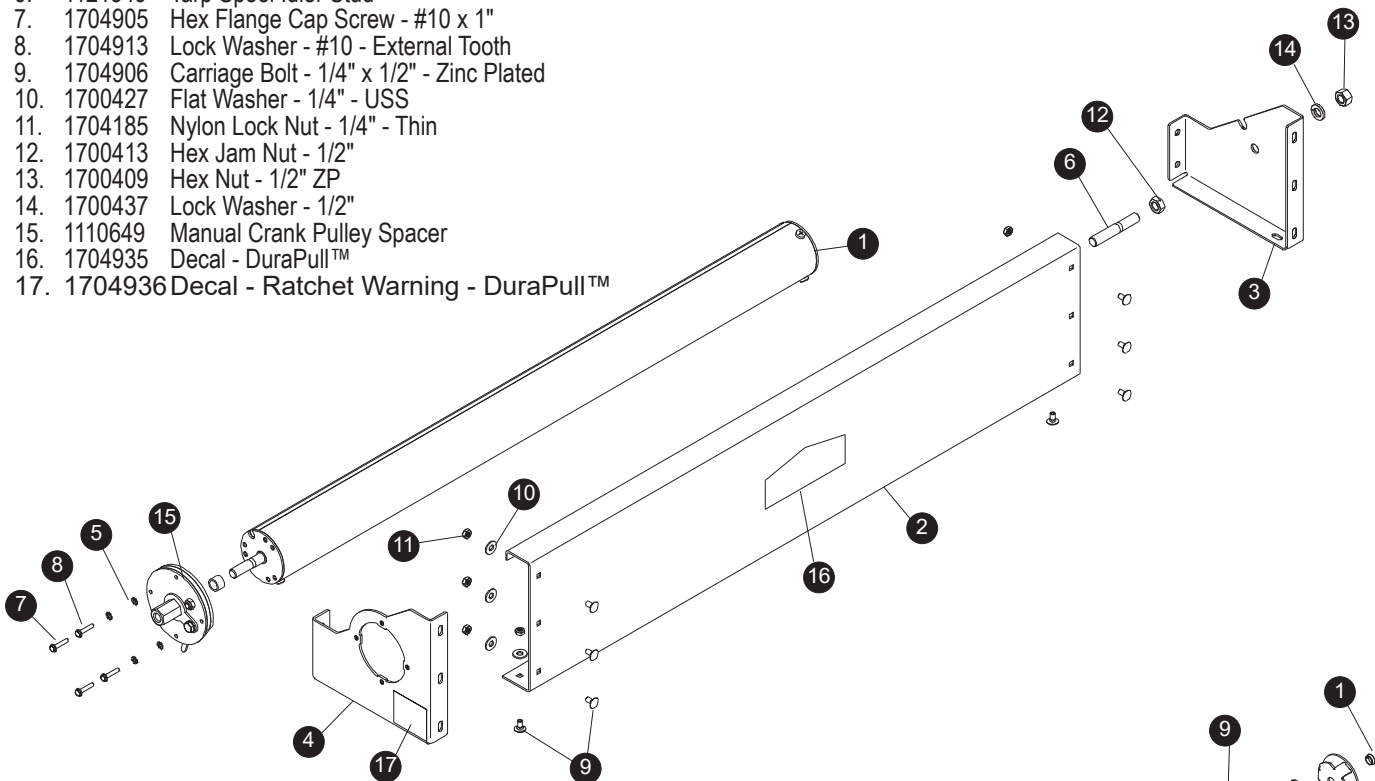
**STEP 5:** To decrease tension or remove ratchet assembly, first remove gear-lock plate. Place 7/8" wrench onto ratchet nut and apply pressure in clockwise direction. Pull back lever at bottom of ratchet assembly to disengage ratchet pawl and slowly turn wrench counter-clockwise to reduce spring tension. Release lever to reengage ratchet. When ratchet has reengaged, remove wrench.



**NOTE:** If removing ratchet assembly, make sure all tension is removed from spring before disassembling.

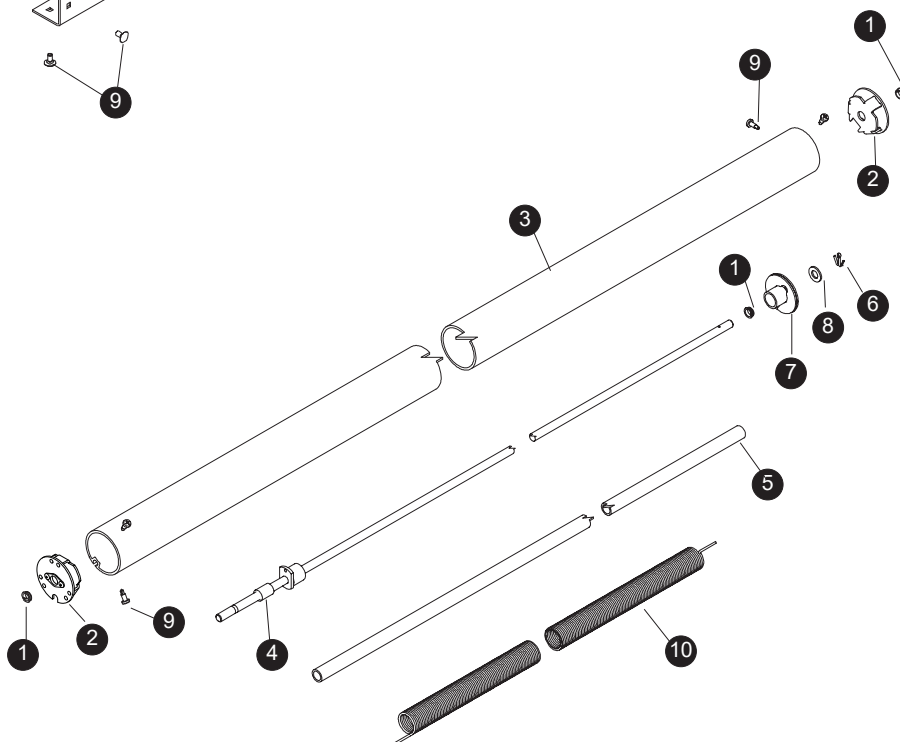
## TARP HOUSINGS

Item	Part #	Description
.	1125358	Tarp Housing Assembly -Front Mount
1.	1125362	Tarp Spool Assembly - 40"
2.	1125361	Tarp Housing Shield - Front Mount
3.	1125360	Tarp Housing End Panel - Front Mount - Driver Side
4.	1125359	Tarp Housing End Panel - Front Mount - Pass. Side
5.	1121339	Tarp Spool Ratchet Assembly
6.	1121349	Tarp Spool Idler Stud
7.	1704905	Hex Flange Cap Screw - #10 x 1"
8.	1704913	Lock Washer - #10 - External Tooth
9.	1704906	Carriage Bolt - 1/4" x 1/2" - Zinc Plated
10.	1700427	Flat Washer - 1/4" - USS
11.	1704185	Nylon Lock Nut - 1/4" - Thin
12.	1700413	Hex Jam Nut - 1/2"
13.	1700409	Hex Nut - 1/2" ZP
14.	1700437	Lock Washer - 1/2"
15.	1110649	Manual Crank Pulley Spacer
16.	1704935	Decal - DuraPull™
17.	1704936	Decal - Ratchet Warning - DuraPull™



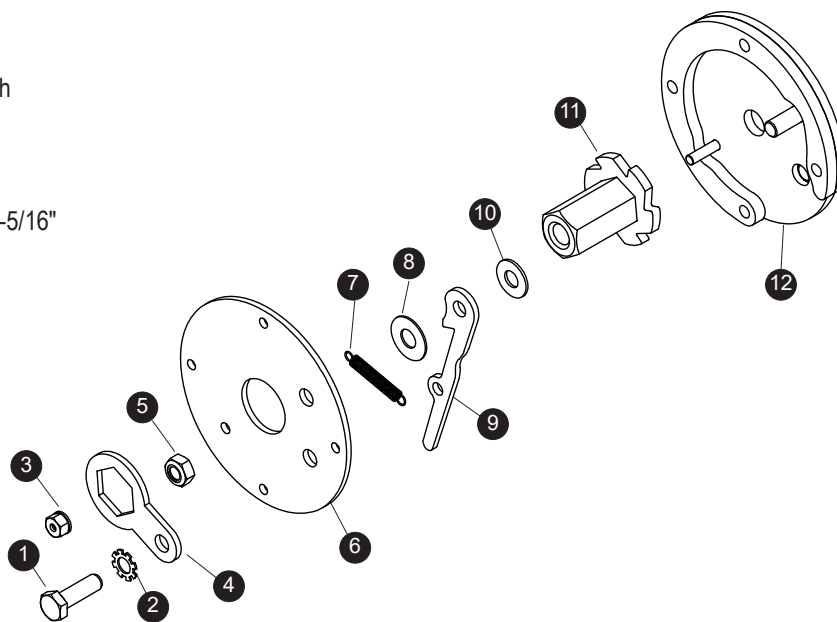
## TARP SPOOLS

Item	Part #	Description
.	1125362	Tarp Spool Assembly - 40"
1.	1704908	Flange Bearing - 1/2" - Snap In
2.	1128200	Tarp Spool End Cap
3.	1125363	Tarp Spool Tube - 38-1/2"
4.	1125364	Spring Shaft - 40 DPL
5.	1125366	Spring Spacer Tube - 30-7/8"
6.	1704907	Cotter Pin - 1/8" x 1"
7.	1121328	Spring Tube Catch
8.	1704919	Flat Washer - 1/2"
9.	1700398	Self-Drilling Screw - 1/4" x 3/4"
10.	1705608	Torsion Spring - 1-1/2" x 30"

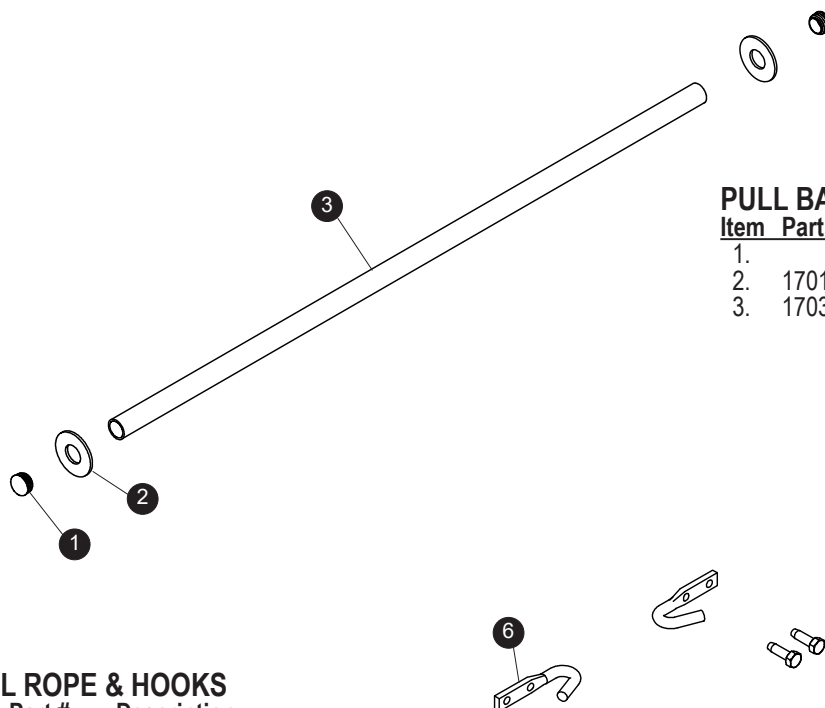


**TARP SPOOL RATCHETS**

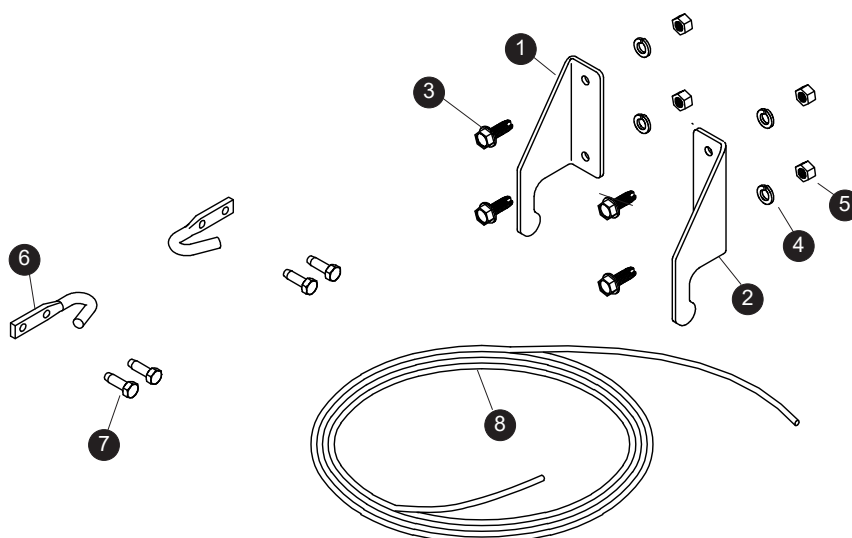
Item	Part #	Description
	1121339	Tarp Spool Ratchet Assembly
1.	1704416	Cap Screw - 5/16" x 1"
2.	1704912	Lock Washer - 5/16" - External Tooth
3.	1704813	Nylon Lock Nut - #10
4.	1121348	Ratchet Lock Plate
5.	1704454	Nylon Lock Nut - 5/16"
6.	1121347	Ratchet Cover Plate
7.	1704904	Extension Spring - 7/32" x .023" x 1-5/16"
8.	1702881	Pawl Washer - 3/8"
9.	1121346	Ratchet Pawl
10.	1704911	Nylon Washer - 1/16" x 3/4" x 5/16"
11.	1705718	Ratchet Gear
12.	1121340	Ratchet Base Assembly

**PULL BARS**

Item	Part #	Description
1.		Pull Bar
2.	1701209	Flat Washer - 1-1/8"
3.	1703881	Cap Plug - 1-1/4"

**PULL ROPE & HOOKS**

Item	Part #	Description
1.	1125159	Pull-Bar Retaining Hook
2.	1125160	Pull-Bar Retaining Hook
3.	1700400	Self-Tapping Screw - 3/8" x 1"
4.	1700434	Lock Washer - 3/8"
5.	1700407	Hex Nut - 3/8"
6.	1700682	Box Hook - 3/8" x 3-1/4"
7.	1701059	Self-Tapping Screw - 5/16" x 1"
8.	1700624	Rope - 1/4" - Solid Braid - Poly - (per foot)







---

2309 SHUR-LOK STREET • YANKTON, SD 57078-0713  
PHONE: 1-800-SHUR-LOK (800-474-8756) • FAX: 1-605-665-0501  
**[www.SHURCO.com](http://www.SHURCO.com)**

---