



TARP SYSTEMS & ACCESSORIES

READ BEFORE INSTALLING

P/N 1126984 Rev. D



Side Dump System OWNER'S MANUAL

Download ShurLink™ App



2309 SHUR-LOK STREET • YANKTON, SD 57078-0713
PHONE: 1-800-SHUR-LOK (1-800-474-8756) • FAX: 1-605-665-0501
www.SHURCO.com

SHOP ONLINE: www.SHOPSHURCO.com

Scan QR Code

ORDER
TERMS AND CONDITIONS



WARRANTY



PATENTS

**SHUR-CO[®], LLC SERVICE AND DISTRIBUTION CENTERS**

SHUR-CO[®] CORPORATE HQ
2309 Shur-Lok Street, Yankton
800-729-2969
Fax: 605-665-0501

SHUR-CO[®] of FLORIDA
3353 SE Gran Park Way, Stuart
800-327-8287
Fax: 772-287-0431

SHUR-CO[®] of CANADA
490 Elgin Street, Unit 2
Brantford, Ontario N3S 7P8
800-265-0823
Fax: 519-751-3997

SHUR-CO[®] of IDAHO
921 Garber Street, Caldwell
208-455-1046
Fax: 208-455-1046

SHUR-CO[®] of OHIO
4676 Lynn Road, Rootstown
866-356-0242
Fax: 330-297-5599

SHUR-CO[®] of SOUTH DAKOTA
1212 N. Norbeck St., Vermillion, SD
605-658-1020
Fax: 605-658-1022


SHUR-CO[®] of ILLINOIS
3993 E. Mueller Avenue, Decatur
866-356-0246
Fax: 217-877-8270

SHUR-CO[®] of NORTH DAKOTA
1746 4th Avenue. NW, West Fargo
877-868-4488
Fax: 701-277-1284

SHUR-CO[®] UK LIMITED
Unit 41, Rochester Airport Estate
Laker Road
Rochester, Kent ME1 3QX

MESSAGE TO OWNERS

Thank you for buying this tarping system from Shur-Co®. We appreciate your confidence in our products. Please read and thoroughly understand this manual before installing and/or operating this system.

Pay particular attention to important safety and operating instructions, as well as warnings and cautions. The hazard symbol  is used to alert users to potentially hazardous conditions and is followed by caution, warning or danger messages.

Failure to READ AND FOLLOW INSTRUCTIONS could result in failure of your tarping system and/or personal injury. Your trailer requirements may, however, call for minor variations to these instructions.

Please inspect your tarping system periodically and repair or replace worn or damaged parts.

QUESTIONS? CALL OUR HELP LINE:

1-866-748-7435

MON-FRI 8 AM-5 PM CENTRAL TIME

SAFETY

We at Shur-Co® are concerned with your safety and the safety of all those operating this system. Therefore, we have provided safety decals at various locations on your tarping system. Keep decals as clean as possible at all times. Replace any decal that has become worn or damaged, painted over or otherwise difficult to read. Replacement decals are available through Shur-Co® dealers.

SAFETY INSTRUCTIONS

- 1. Always wear safety glasses during installation and operation.**
- 2. Stay clear of moving parts.**
- 3. Do not operate under low-hung power lines. Always check for overhead obstructions before opening or closing.**
- 4. Open and close tarp only at the job site.**
- 5. Place safety decals in visible locations. Replace worn or damaged decals.**
- 6. No other use of this system is authorized, except as designed.**

RUST PREVENTION

To prevent rust, paint all exposed metal, such as weld seams and/or metal exposed by grinding or cutting, with corrosion-resistant paint.

TABLE OF CONTENTS

Hardware Identification	4
Fixed Tube Anchor Installation	5
Spring Assembly Support Bracket Installation	6
Front Arm Installation	7
Rear Arm Installation	8
Tarp Inspection & Fixed Tube	9
Roll Tube Assembly & Tarp Installation	10-12
Tarp Cradle Installation	13
Tarp Roll Push-Out Installation	14
Electric Wiring	15-19
Tarp Storage	20
Motor Failure Service	21
Replacement Parts	22-27

TOOLS REQUIRED

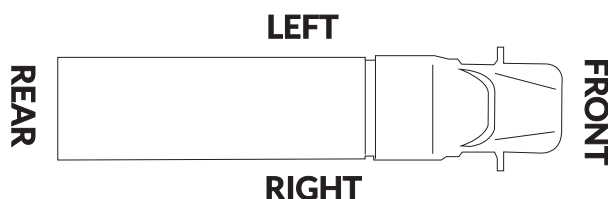
1. Wrenches - 1/2", 5/16", 9/16", 5/8", 3/4", 10mm
2. Ratcheting Socket Wrench
3. Sockets - 1/2", 9/16", 3/4"
4. Allen Wrench - 1/8"
5. Drill Bits (metal cutting) - 1/4", 5/16", 3/8", 1/2"
6. Center Punch
7. Hammer
8. Tape Measure
9. Flat Head or Phillips Screwdriver
10. Grinder
11. Air or Electric Impact Driver w/9/16" Socket
12. Metal Saw
13. Steel Welder
14. Wire Crimping Tool
14. Hex Driver Bit - 5/16"
15. Phillips Driver Bit for Drill - #3
16. Grease Gun w/Multi-Purpose Grease

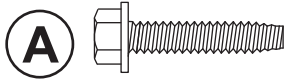
Additional tools needed, depending on kit configuration:

1. Rivet Gun - 1/4"
2. Aluminum Welder

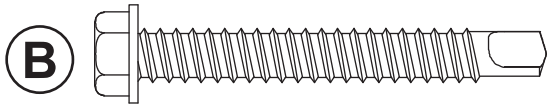
MAINTENANCE

- Spray all bearings with penetrating oil as needed.
- Clean springs weekly to remove dirt.
- Tighten any loose bolts.
- Replace damaged/bent parts.
- Replace worn or broken springs.
- Replace/repair worn or damaged tarps.

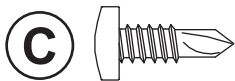
VEHICLE ORIENTATION



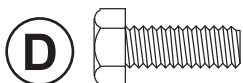
1704905 Flanged Cap Screw - #10 x 1"



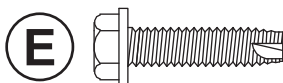
1705415 Self-Drilling Screw - #12 x 1-3/4"



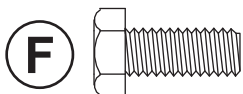
1700398 Self-Drilling Screw - 1/4" x 3/4"



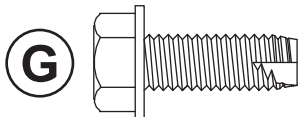
1701045 Cap Screw - 1/4" x 3/4"



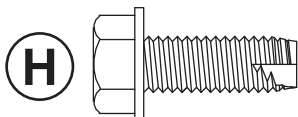
1704338 Self-Tapping Screw - 1/4" x 1"



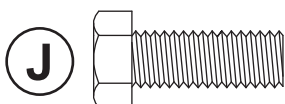
1701045 Cap Screw - 5/16" x 3/4"



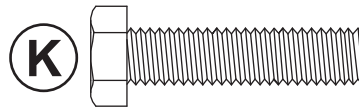
1700400 Self-Tapping Screw - 3/8" x 1"



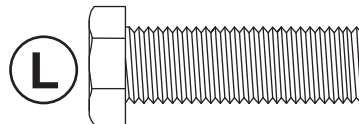
1705924 Self-Tapping Screw - 3/8" x 1"



1701061 Cap Screw - 3/8" x 1"



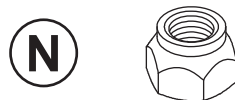
1705910 Cap Screw - 3/8" x 1-1/2"



1705920 Cap Screw - 1/2" x 1-1/2"



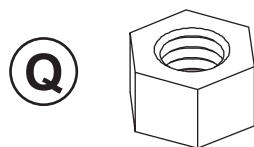
1808844 Nylon Lock Nut - #10



1701543 Nylon Lock Nut - 1/4"



1704946 Flanged Top Lock Nut - 5/16"



1700407 Hex Nut - 3/8"



1705918 Nylon Lock Nut Black - 3/8"



1705913 Nylon Lock Nut - 1/2"



1111054 Flat Washer - #10



1700427 Flat Washer - 1/4"



1700434 Lock Washer - 3/8"



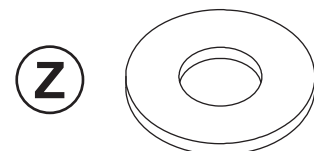
1705909 Lock Washer - 3/8"



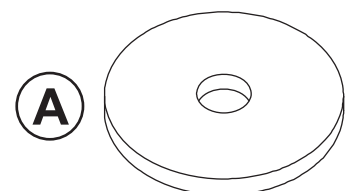
1705921 Flat Washer - 3/8"



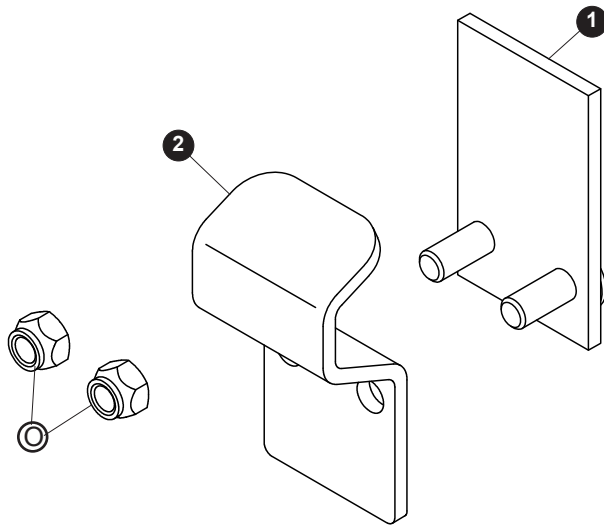
1700429 Flat Washer - 3/8"



1705911 Flat Washer - 1/2"

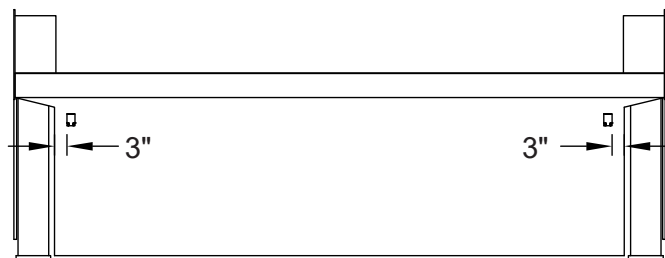
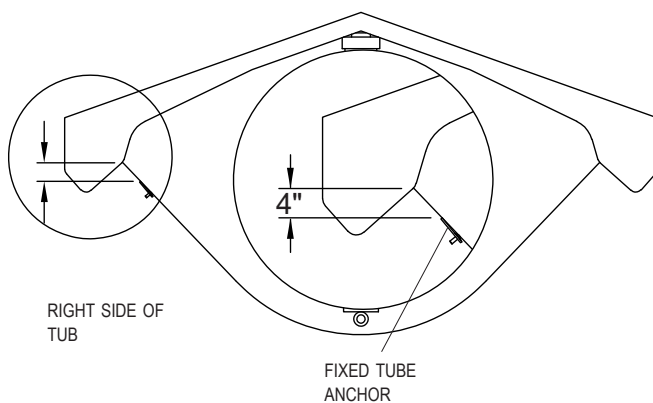


1126983 Spring Catch Retaining Washer - Black

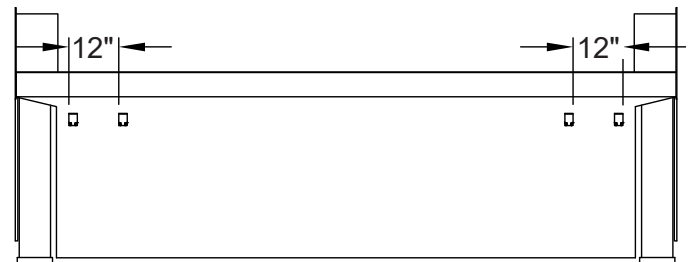


Item	Part #	Description
1.	1120733	Fixed Tube Anchor
2.	1126978	Fixed Tube Clamp
R.	1705918	Nylon Lock Nut - 3/8"

STEP 1: Locate fixed tube anchors on right side of tub. Measure 3 inches in from each face of tub and 4 inches down from bottom of tub side rail and mark front and rear anchor locations.

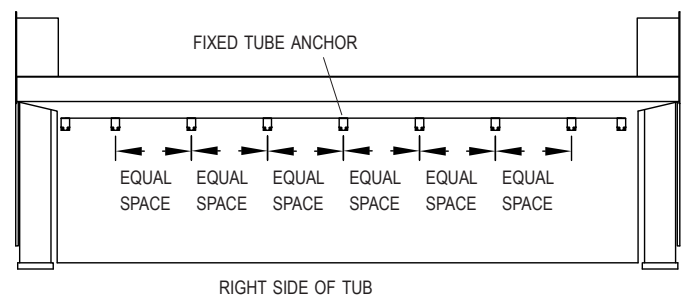


STEP 2: Measure 12 inches in from front anchor location and mark location for second anchor. Repeat at rear of trailer.

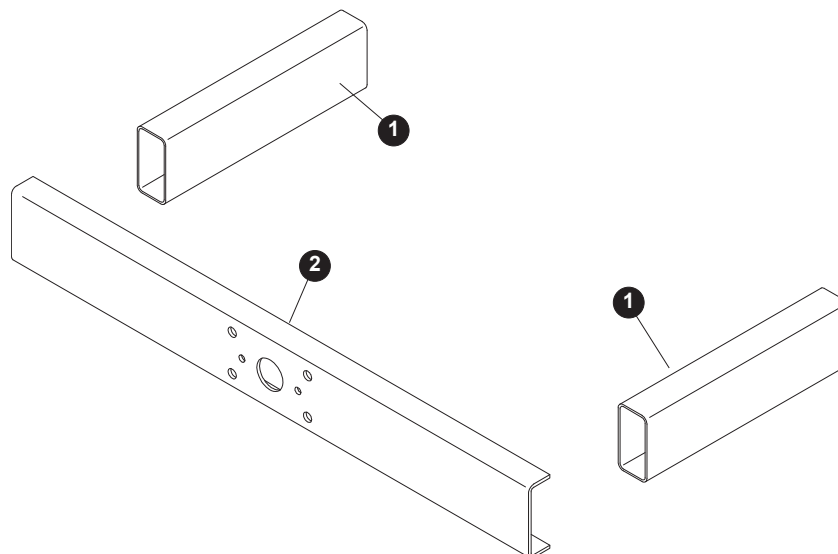


NOTE: Fixed tube will be clamped to anchors during tarp installation. See page 8, STEP 6.

STEP 3: Equally space remaining anchors. Grind anchor locations on tub to bare metal and weld anchors in place. Paint anchors to match color of tub.

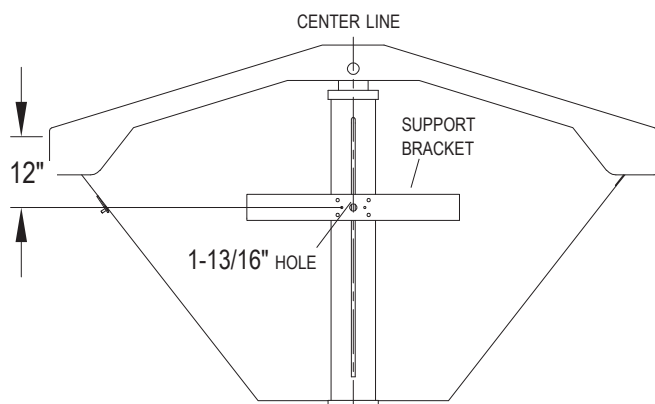


RIGHT SIDE OF TUB

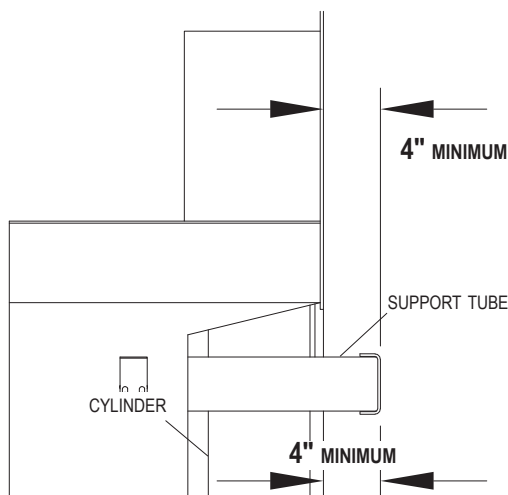


Item	Part #	Description
1.	1126824	Support Tube
2.	1126810	Support Bracket

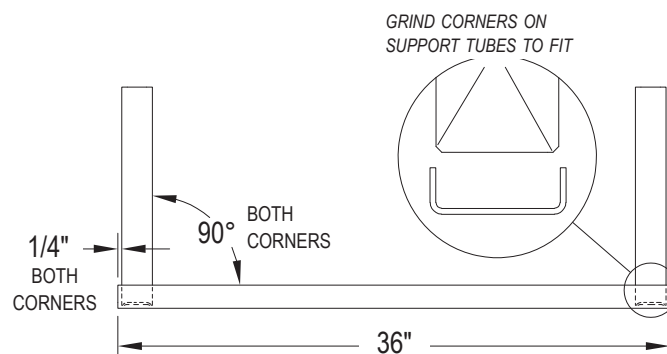
STEP 1: To determine support bracket location on tub, align 1-13/16 inch hole in center of support bracket (will be center of pivot shaft) with center of tub end and 12 inches below top of tub side rail.



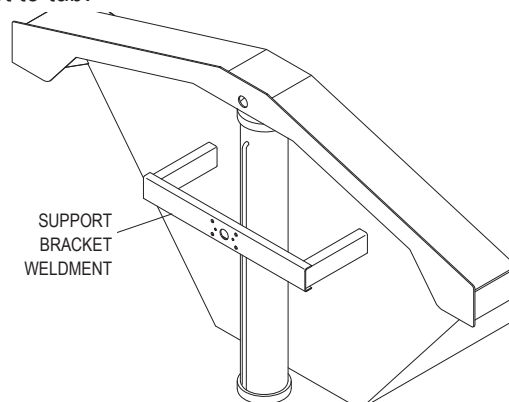
STEP 2: To determine support tube lengths, allow at least 4 inches of clearance between support bracket and cylinder (tub face, if cylinders are not mounted at end of trailer).



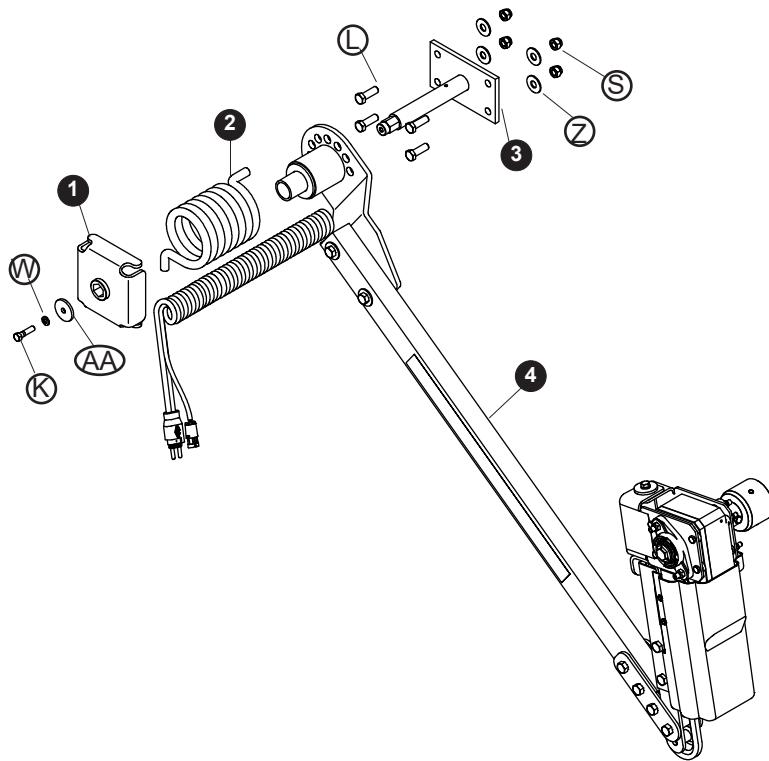
STEP 3: If desired, support tubes can be shortened to bring support bracket closer to tub. 4 inches of clearance must be maintained (see STEP 2). Cut tubes squarely. Grind corners to fit into support bracket. Weld tubes squarely to support bracket as shown.



STEP 4: Grind tub to bare metal where support tubes will be welded to tub. Holding support bracket weldment in place and, making sure bracket is square and level to tub, weld bracket to tub.

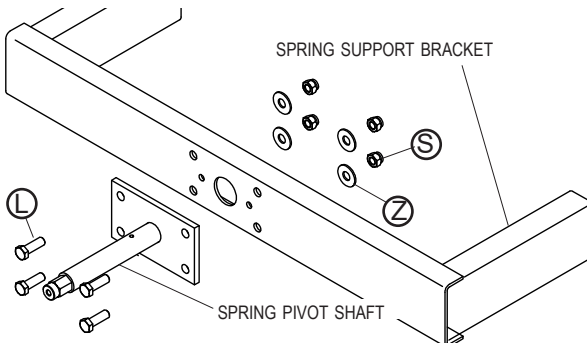


STEP 5: Repeat process at other end of tub. Paint support bracket weldments and exposed metal on tub to match tub color.

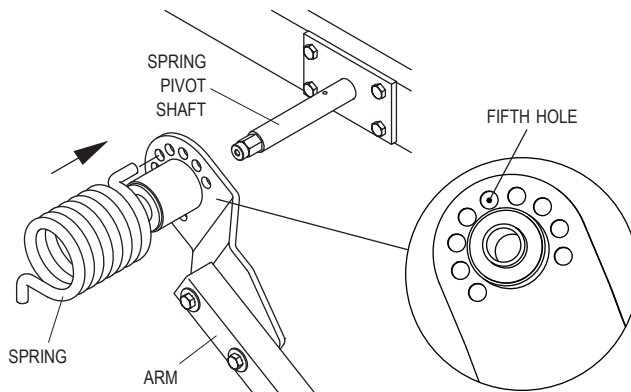


Item	Part #	Description
1.	1126799	Spring Catch
2.	1705828	Torsion Spring - Black - Left Hand
3.	1126819	Spring Pivot Shaft
4.	1126841	Motor & Front Arm Assembly
K.	1705910	Cap Screw - 3/8" x 1-1/2"
L.	1705920	Cap Screw - 1/2" x 1-1/2"
S.	1705913	Nylon Lock Nut - 1/2"
W.	1705909	Lock Washer - 3/8"
Z.	1705911	Flat Washer - 1/2"
AA.	1126983	Spring Catch Retaining Washer - Black

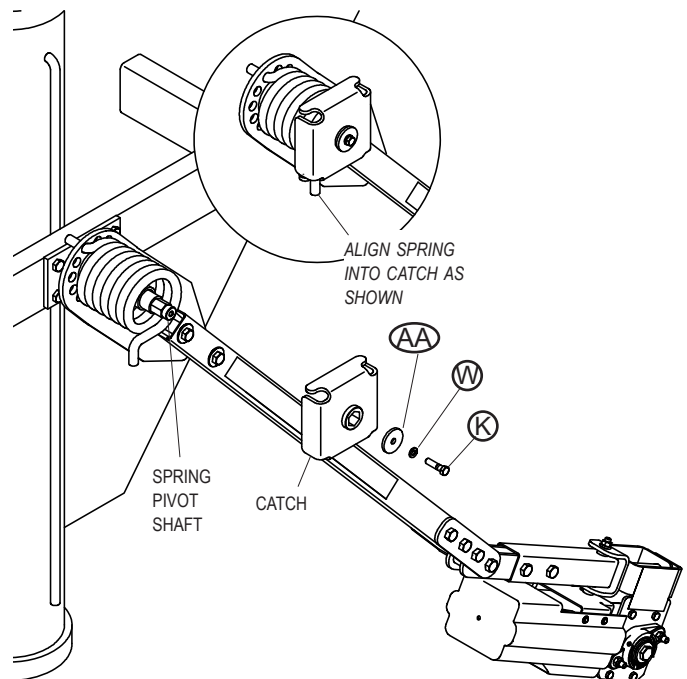
STEP 1: Securely fasten spring pivot shaft to spring support bracket with screws (L), washers (Z) and lock nuts (S) as shown.

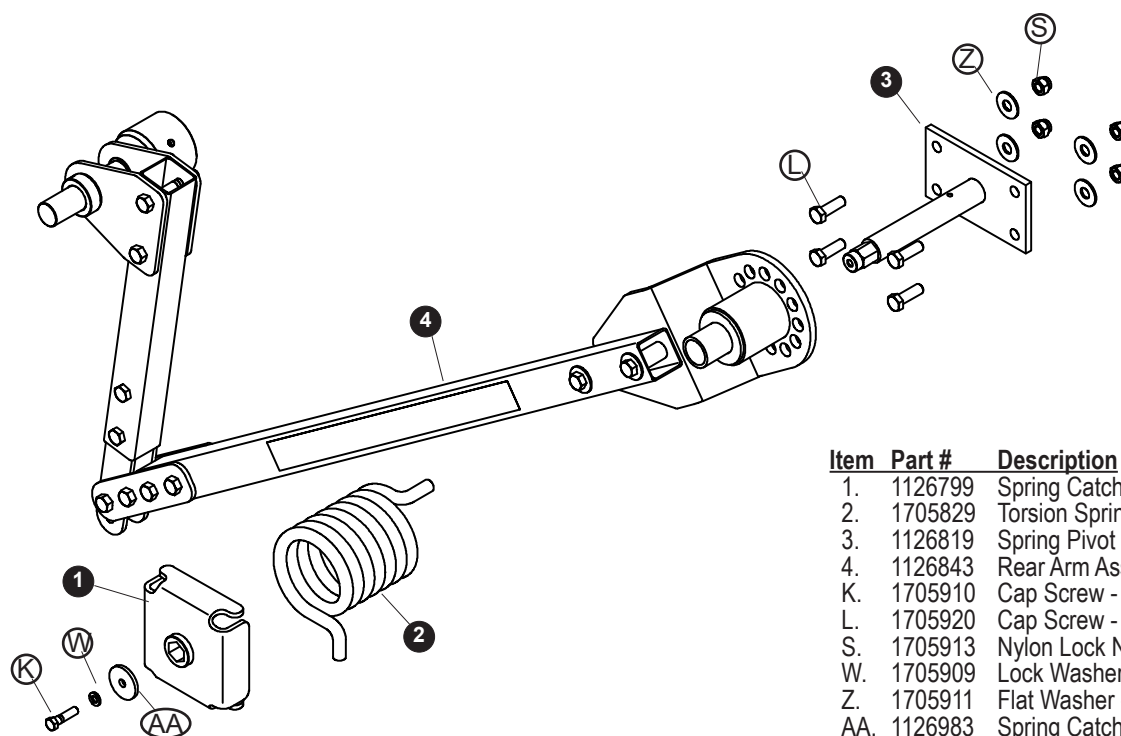


STEP 2: Assemble arm and spring onto spring pivot shaft, aligning spring into fifth hole as shown.



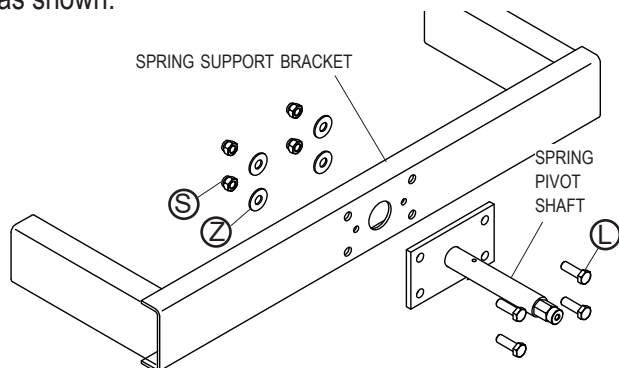
STEP 3: Assemble catch onto spring pivot shaft, aligning spring and into catch as shown. Secure with screw (K), lock washer (W) and washer (AA).



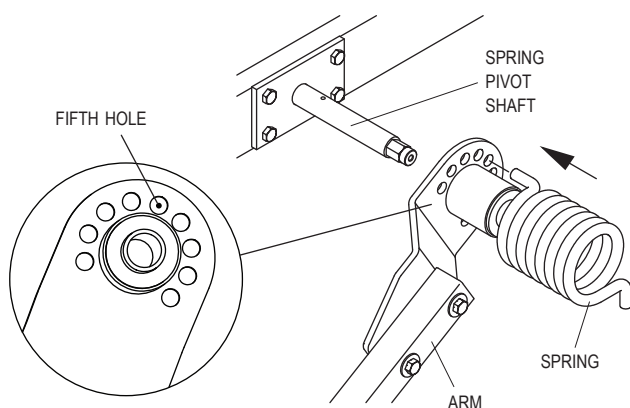


Item	Part #	Description
1.	1126799	Spring Catch
2.	1705829	Torsion Spring - Red - Right Hand
3.	1126819	Spring Pivot Shaft
4.	1126843	Rear Arm Assembly
K.	1705910	Cap Screw - 3/8" x 1-1/2"
L.	1705920	Cap Screw - 1/2" x 1-1/2"
S.	1705913	Nylon Lock Nut - 1/2"
W.	1705909	Lock Washer - 3/8"
Z.	1705911	Flat Washer - 1/2"
AA.	1126983	Spring Catch Retaining Washer - Black

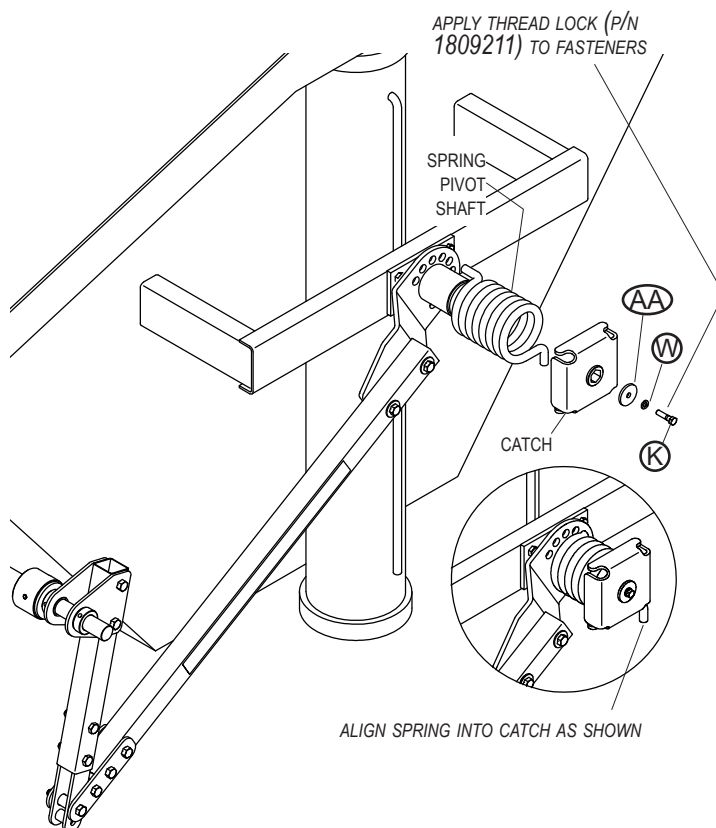
STEP 1: Securely fasten spring pivot shaft to spring support bracket with screws (L), washers (Z) and lock nuts (S) as shown.



STEP 2: Assemble arm and spring onto spring pivot shaft, aligning spring into hole shown.



STEP 3: Assemble catch onto spring pivot shaft, aligning spring and into catch as shown. Secure with screw (K), lock washer (W) and washer (AA).

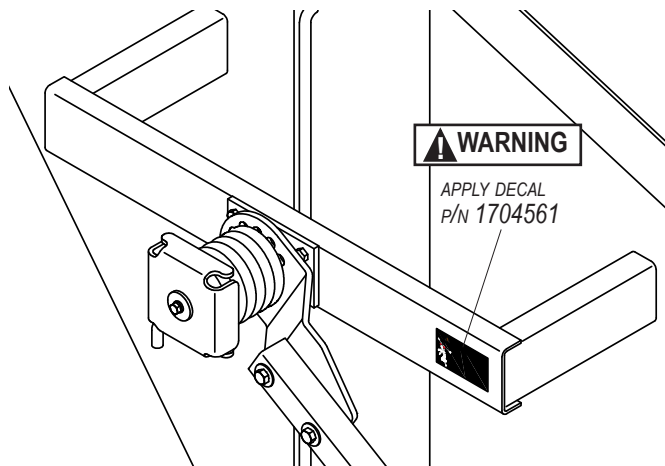




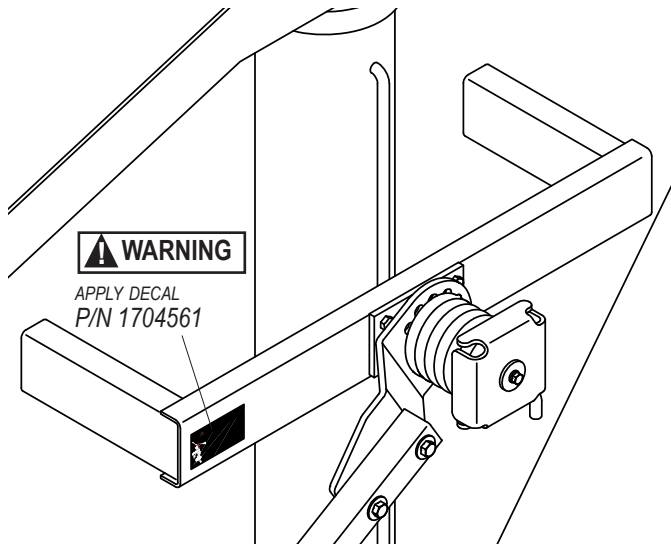
WARNING

Apply arm warning decals (P/N 1704561) on box near spring pivot.
Arms are under spring tension while springs are engaged. Use caution while assembling or disassembling arms.

STEP 1: Apply decal P/N 1704561 on front of trailer as shown.



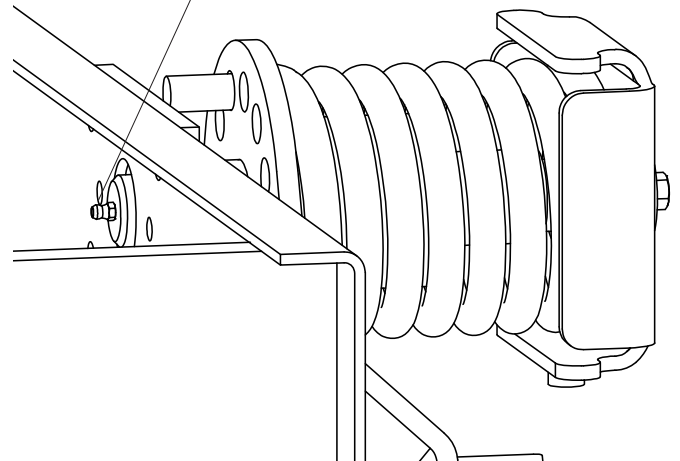
STEP 2: Apply decal P/N 1704561 on rear of trailer as shown.



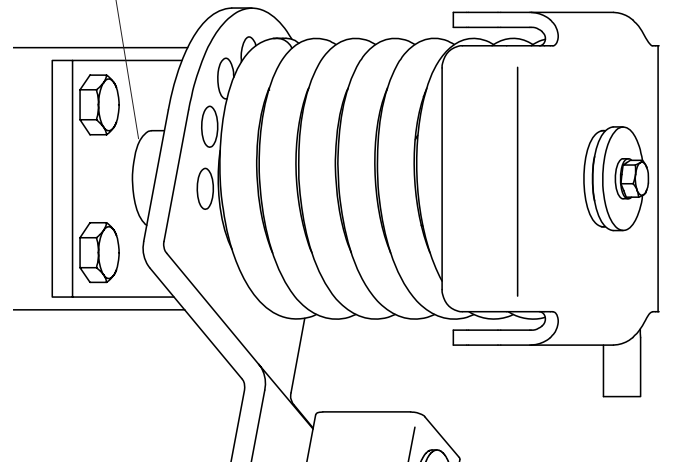
BOX PREPARATION

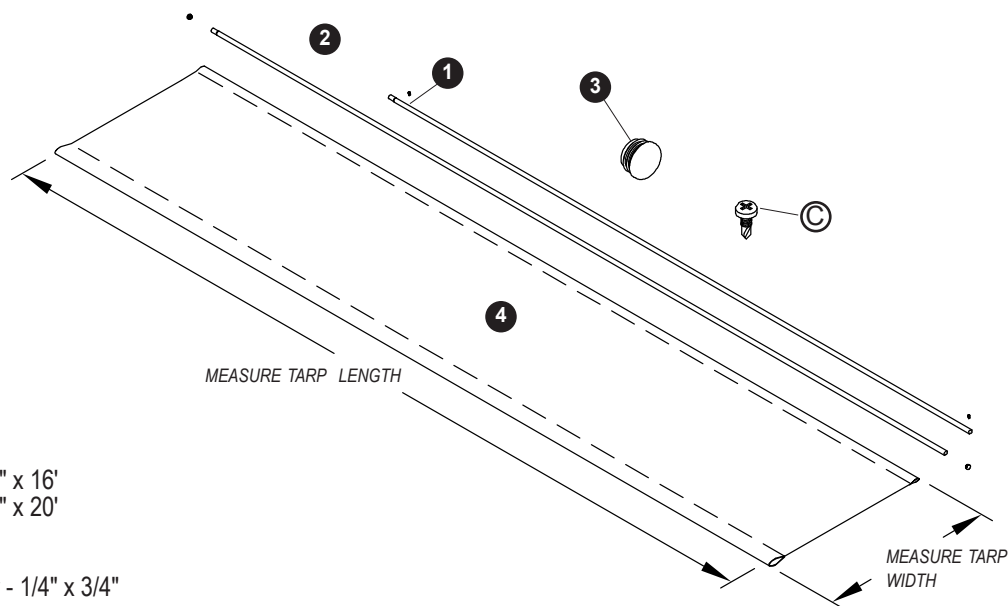
STEP 1: On front and rear, pump grease into zerk with grease gun. Keep pumping until grease comes out in area shown.

PUMP GREASE INTO ZERK
WITH GREASE GUN



PUMP UNTIL GREASE
COMES OUT HERE
(ALL AROUND)



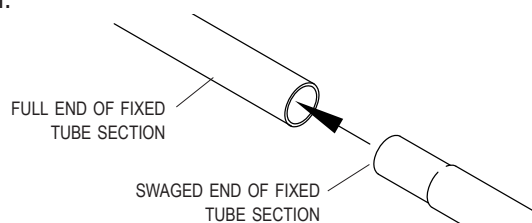


Item	Part #	Description
1.	1700051	Fixed Tube - 1-1/8" x 16'
2.	1700049	Fixed Tube - 1-1/8" x 20'
3.	1700523	End Plug - 1-1/8"
4.		Tarp
C.	1700398	Self-Drilling Screw - 1/4" x 3/4"

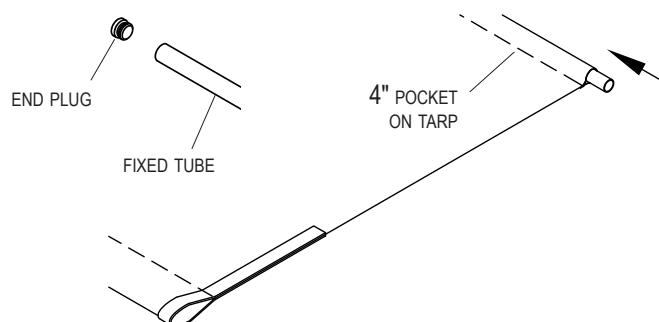
STEP 1: Open tarp and stretch tight. Measure and compare tarp measurements with those on spec sheet attached to tarp. Do not proceed with installation if tarp measurements do not match measurements specified on sheet. Call Shur-Co® or your local dealer for alterations or a replacement tarp.

NOTE: Tarps cannot be returned for free replacement beyond this point. Tarps damaged beyond this point may be returned for repair or replacement at owner's expense.

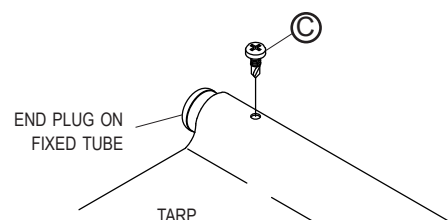
STEP 2: Insert swaged end of fixed tube section into full end of second tube section. Align tubes, weld and grind smooth.



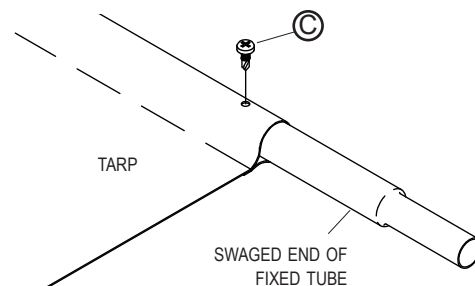
STEP 3: Install end plug into full end of tube weldment. Insert tube, end plug first, into 4 inch pocket on tarp.



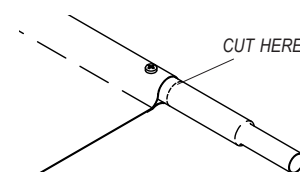
STEP 4: Extend fixed tube 1/4 inches past tarp edge, secure with screw (C) through tarp and into fixed tube.



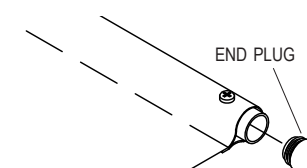
STEP 5: Stretch tarp along fixed tube, secure with screw (C) through tarp and into fixed tube.



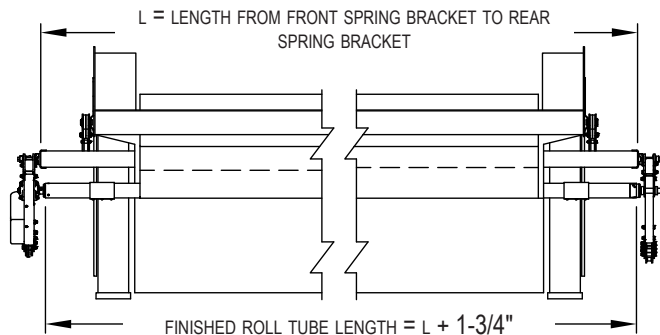
STEP 6: Cut fixed tube 1/4 inch past edge of tarp, removing swaged end. Grind smooth.



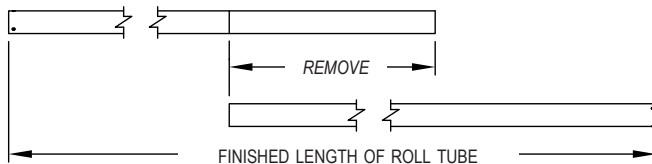
STEP 7: Insert end plug.



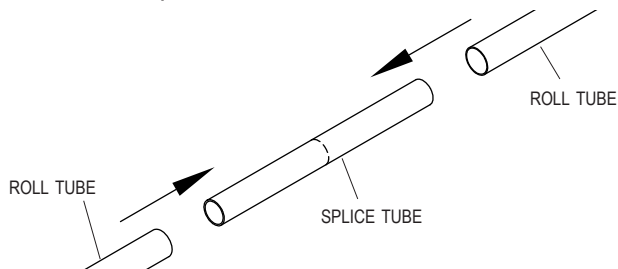
STEP 1: To determine finished length of roll tube, measure from face of front spring mounting bracket to face of rear spring mounting bracket. Add 1-3/4 inches to measurement to get finished roll tube length.



STEP 2: Subtract finished roll tube length from total length of both roll tubes. Cut remainder from one roll tube, removing end without pre-drilled holes.

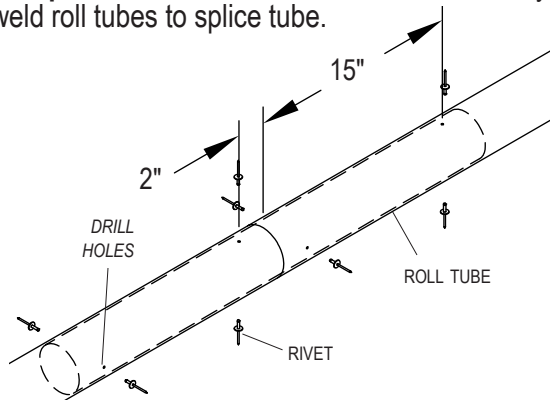


STEP 3: Join inside roll tube sections with splice tube. Insert half of splice tube into each roll tube.



STEP 4: Option 1: Drill 1/4 inch holes through both tubes and fasten with steel rivets.

Option 2: Drill 1/2 inch holes in roll tube only and plug-weld roll tubes to splice tube.

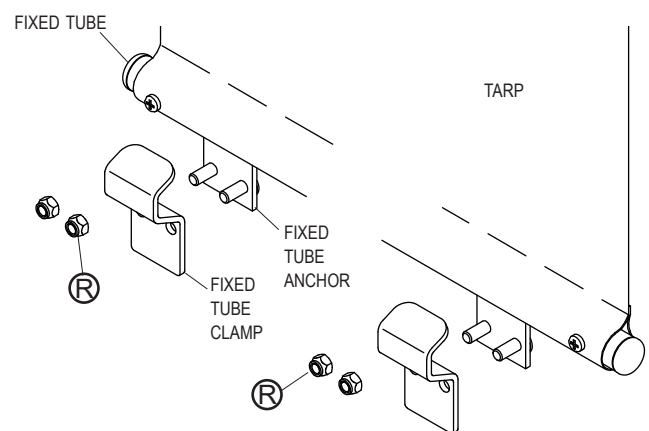


NOTE: Option 1 is preferred. Roll tube life is shorter with option 2.

STEP 5: With tarp laying flat and facing up (center reinforcement on bottom side), slide assembled roll tube through large pocket in tarp. Roll tarp around roll tube, toward fixed tube.

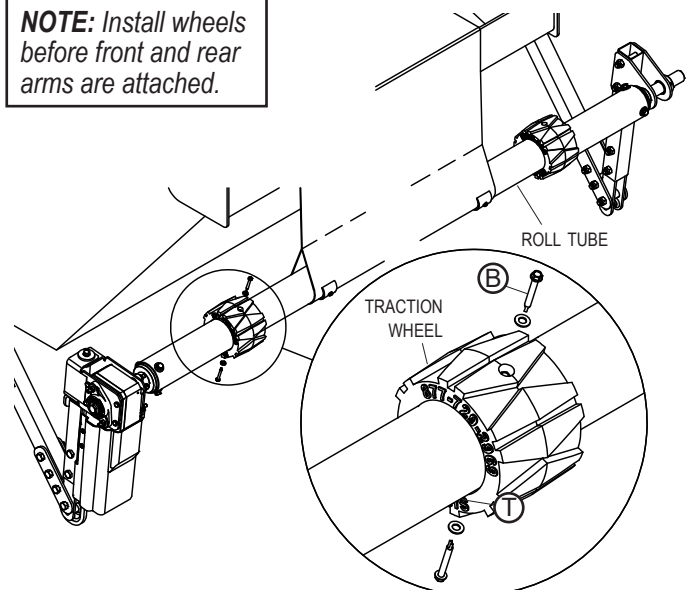
TIPS: Inflate 8 inch tarp pocket with air chuck while inserting roll tube. For ease of handling, wind tarp on roll tube completely before lifting tarp onto box.

STEP 6: Lift tarp assembly on top of fixed tube side of tub and clamp in place, if desired. Unwind tarp to allow fixed tube side of tarp to reach fixed tube anchors on side of tub. Center tarp on tub and secure tarp into fixed tube anchors with fixed tube clamps and nylon lock nuts (R).

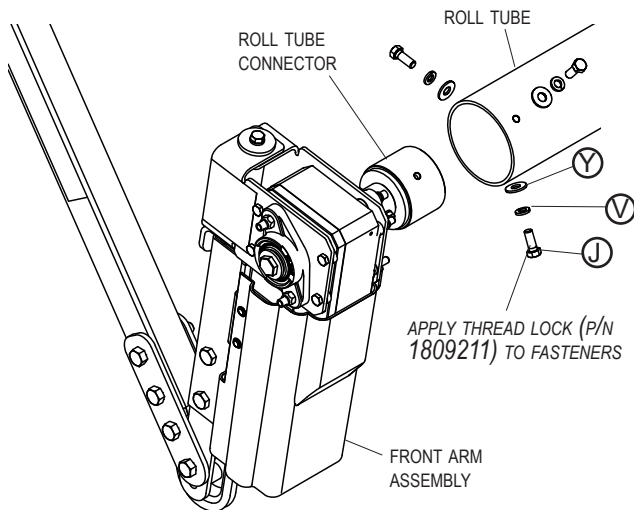


STEP 7: Install rubber traction wheel at each end of roll tube so wheels will track over bulkhead. Secure traction wheels to roll tube with screws (B) and washers (T).

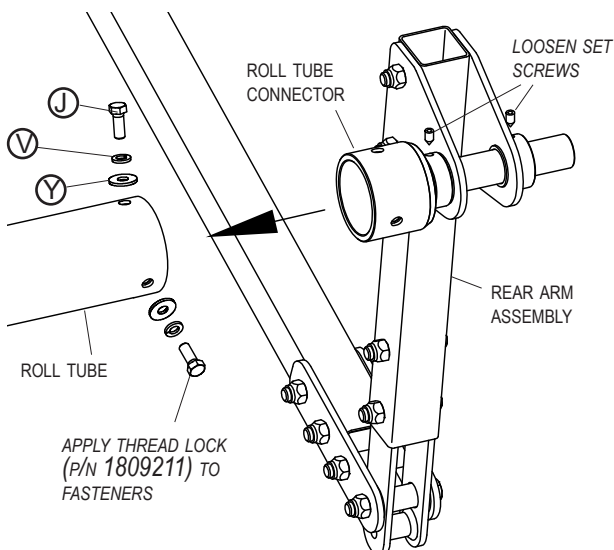
NOTE: Install wheels before front and rear arms are attached.



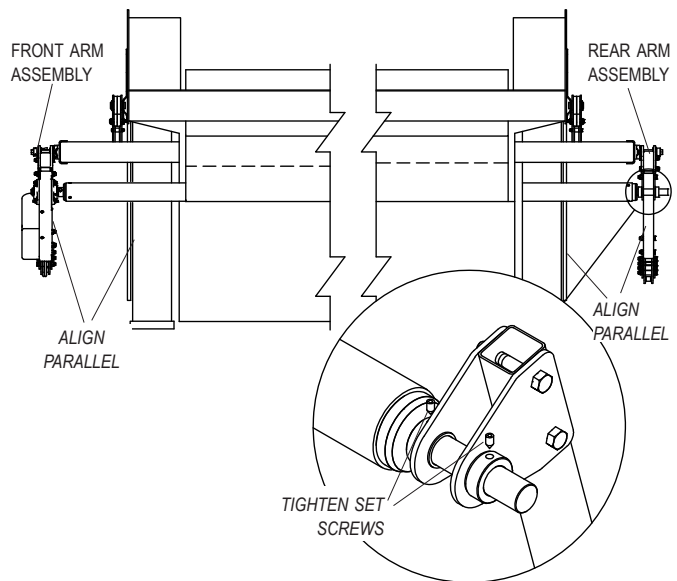
STEP 8: Unroll tarp completely over left side of tub, allowing roll tube and tarp to hang freely. Lift front arm and insert roll tube connector into roll tube. Align screws (J) lock washers (V) and flat washers (Y) with threaded holes on front roll tube and roll tube connector. Apply thread lock, then thread screws into threaded holes. Tighten all fasteners.



STEP 9: On rear arm, loosen set screws on rear roll tube connector locking collars. Lift rear arm and insert roll tube connector into roll tube. Align screws (J) lock washers (V) and flat washers (Y) with threaded holes on front roll tube and roll tube connector. Apply thread lock, then thread screws into threaded holes. Tighten all fasteners.

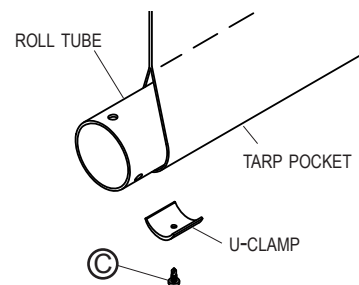


STEP 10: Align front and rear arms parallel to front and rear of tub, then tighten screws. Tighten locking collar set screws onto rear roll tube connector.

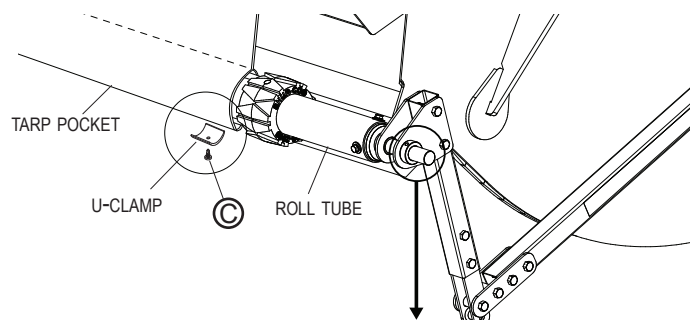


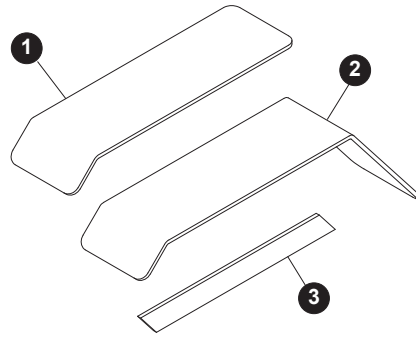
STEP 11: Center tarp between bulkheads and stretch tarp to remove as many wrinkles as possible. Make sure front and rear arms are still parallel to front and rear of tub.

STEP 12: Center first U-clamp on front tarp hem and position screw (C) on crease at bottom of tarp pocket. Fasten U-clamp to tarp and roll tube with screw (C).



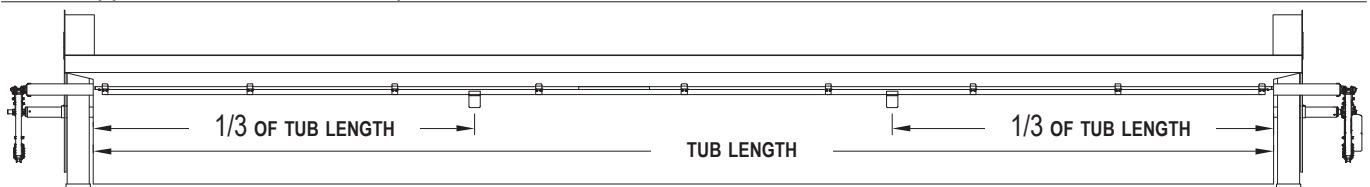
STEP 13: Stretch tarp along roll tube to remove as many wrinkles as possible. Pull rear arm down to tighten tarp on roll tube. Install U-clamp on rear tarp hem. Evenly space and fasten remaining U-clamps along roll tube.



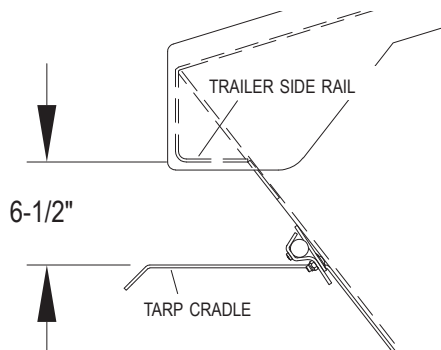


Item	Part #	Description
1.	1121980	Tarp Cradle Extension
2.	1120748	Tarp Cradle
3.	1121979	Tarp Cradle Gusset

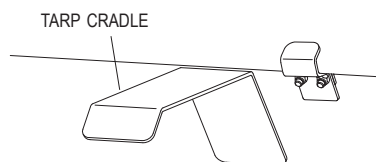
STEP 1A: Locate tarp cradles 1/3 of tub length from each end of tub. Adjust position, if needed, to avoid obstacles such as trailer supports and fixed tube clamps.



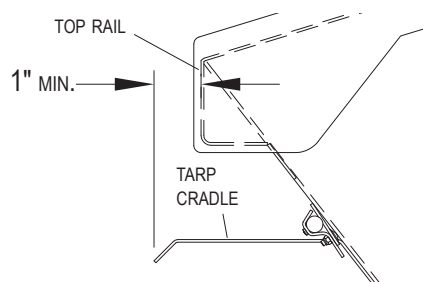
STEP 1B: Allow 6-1/2 inches of clearance between top face of cradle and lowest point on trailer top rail.



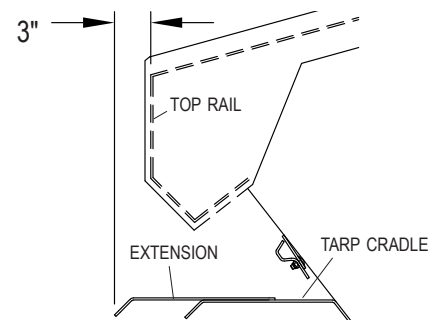
STEP 2: Grind tub to bare metal where tarp cradles will be welded to tub. Holding cradles in place, making sure they're square and level to tub, weld to tub. Protect tarp while welding to prevent damage.



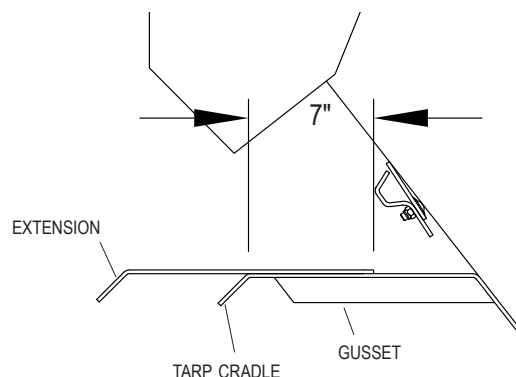
STEP 3A: Tarp cradle extensions are required only where tarp cradle does not extend past top rail by at least 1 inch.

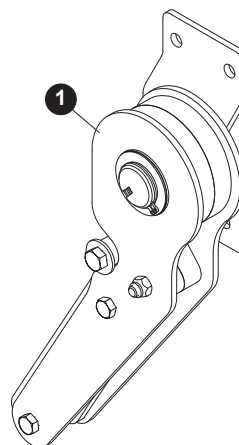
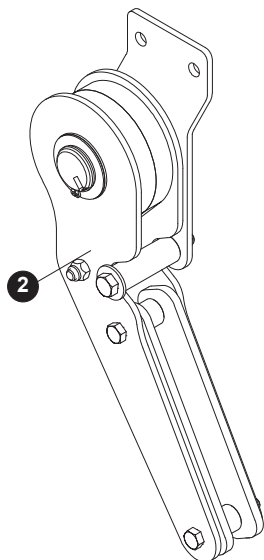


STEP 3B: Place tarp cradle extension on top of tarp cradle so end extends about 3 inches past top rail. Align edges flush and clamp in place. Weld extension to tarp cradle. Grind welds smooth where tarp will come in contact with extension. Repeat for remaining tarp cradle.



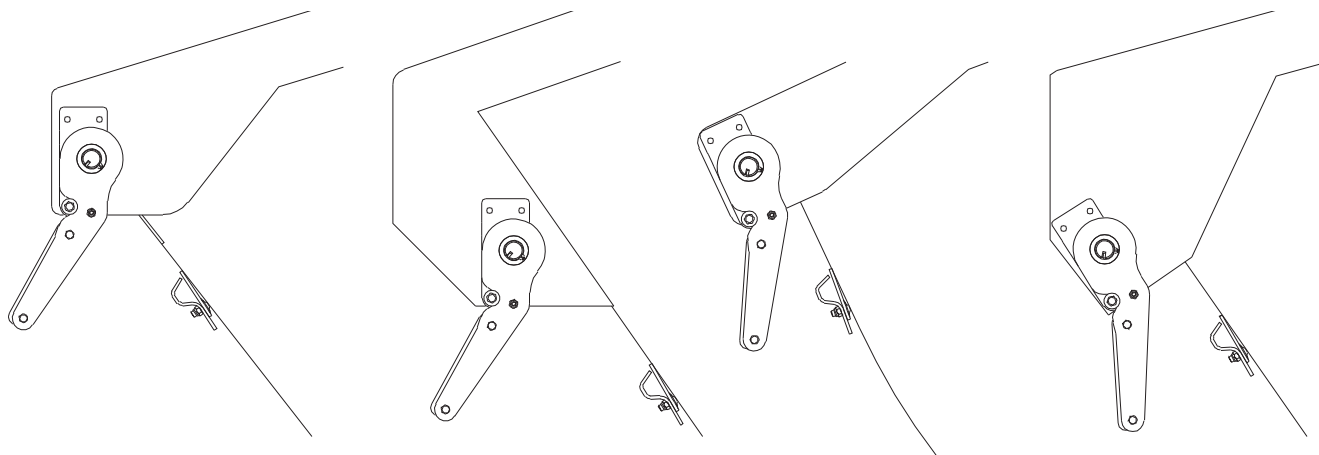
STEP 4: Install tarp cradle gusset in cases where extension overlaps tarp cradle less than 7 inches. Center gusset under tarp cradle and weld in place. Repeat for remaining tarp cradle.





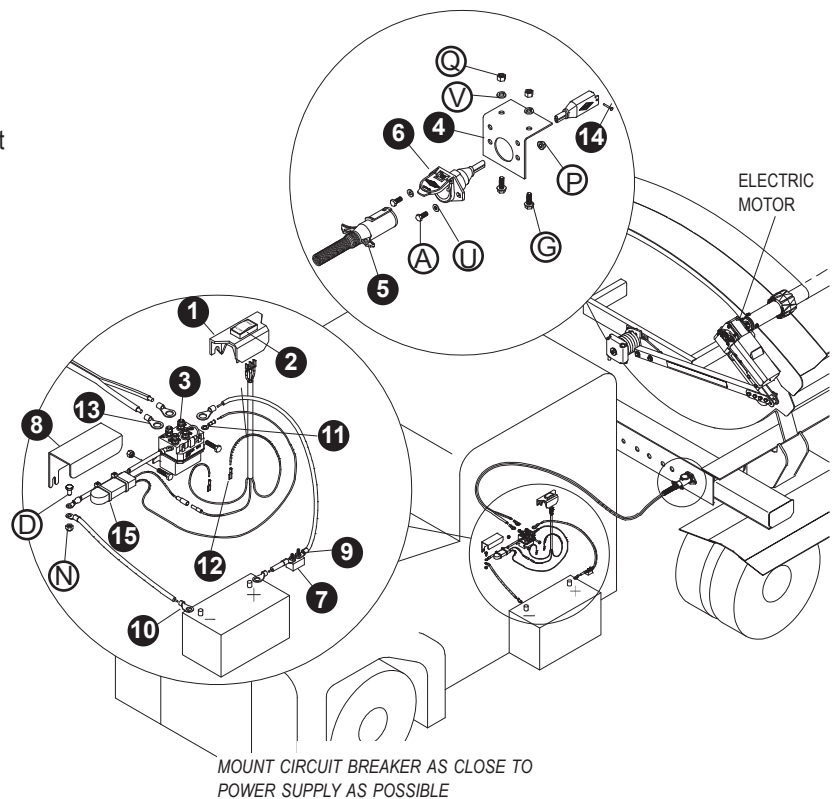
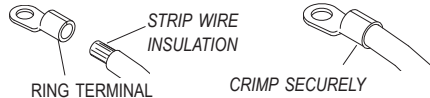
Item	Part #	Description
1.	1127015	Push-Out Assembly - Front
2.	1127016	Push-Out Assembly - Rear

STEP 1: Push-outs are typically welded in place but may be fastened to bulkhead with 3/8 inch bolts if access allows (bolts not included). Shown below are typical side rail shapes and corresponding mounting locations for push-outs to assist moving roll tube out from under top rail.



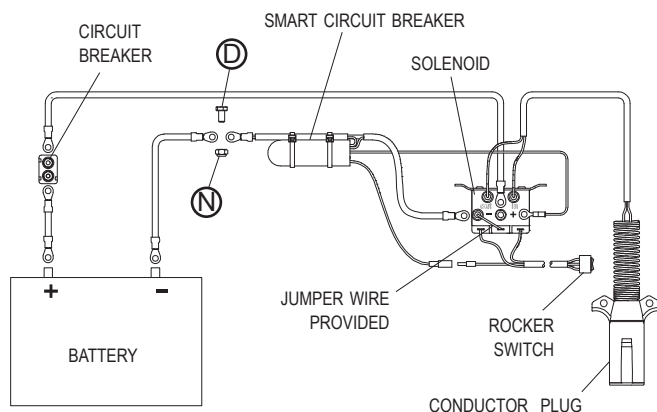
Item	Part #	Description
1.	1703661	Rocker Switch Mounting Bracket
2.	1116020	Rocker Switch
3.	1703845	Motor-Reversing Solenoid
4.	1109015	Mounting Bracket
5.	1115385	Heavy-Duty Dual Conductor Plug
6.	1120670	SMARTwire™ Dual-Conductor Socket
7.	1703480	50-Amp Auto-Reset Circuit Breaker
8.	1703896	Solenoid Cover
9.	1703245	Ring Terminal - 6 Ga. x #10 Stud
10.	1703244	Ring Terminal - 6 Ga. x 3/8" Stud
11.	1704153	Ring Terminal - 14 Ga. x 1/4" Stud
12.	1703659	Push-On Terminal - 14 Ga. x 1/4"
13.	1702707	Ring Terminal - 6 Ga. x 1/4" Stud
14.	1704751	Harness Lock Pin - 1/4" x 7/8"
15.	1705631	SMART™ Circuit Breaker - 80 Amp
A.	1704905	Flanged Cap Screw - #10 x 1"
D.	1703959	Bolt - 1/4" x 3/4"
G.	1700400	Self-Tapping Screw - 3/8" x 1"
N.	1701543	Nylon Lock Nut - 1/4"
P.	1704946	Flanged Top Lock Nut - 5/16"
Q.	1700407	Hex Nut - 3/8"
U.	1700427	Flat Washer - 1/4"
V.	1700434	Lock Washer - 3/8"

NOTE: Cut wires to length and strip only enough wire insulation to install ring terminals. Insert bare wire into ring terminals and crimp securely.

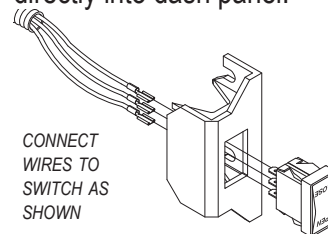


STEP 1: Mount circuit breaker as close as possible to battery or power supply.

STEP 2: Mount solenoid in suitable location - a ventilated area near the battery is ideal. Determine best route for wire. This is usually along the frame with existing wire harness. Run 6-ga. wire from conductor plug to solenoid and from power supply to solenoid as shown in diagram. Run 14-ga. wires from solenoid to switch.



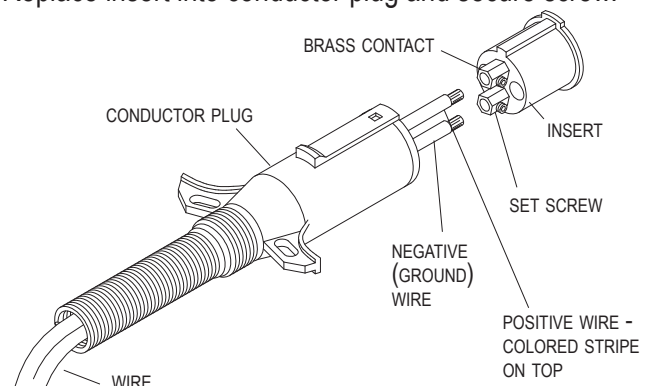
STEP 3: Locate rocker switch in convenient operating location. Mount switch inside cab with bracket or install directly into dash panel.



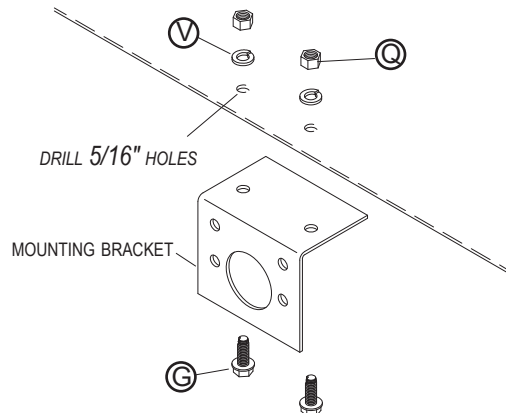
⚠ WARNING

Apply supplied operation warning decal (P/N 1704562) in same location as switch.

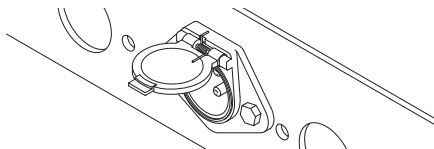
STEP 4: Unfasten and remove insert from conductor plug. Feed 6-ga. wire through plug and into brass contacts on insert. Tighten set screws to secure wires. Replace insert into conductor plug and secure screw.



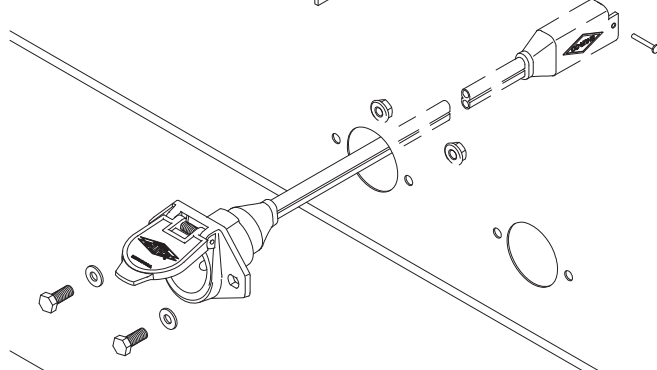
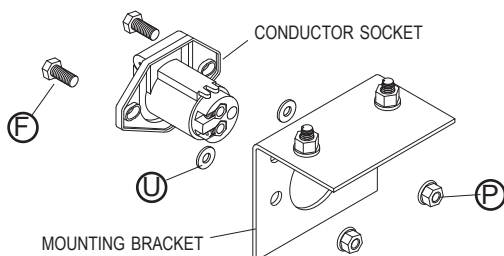
STEP 1: Mount bracket at suitable location on front of trailer, usually near existing plugs. Weld bracket in place or mark and drill 5/16 inch holes and fasten with screws (G), lock washers (V) and nuts (Q).



Options: Conductor socket may be mounted in an existing location on trailer or new mounting holes may be cut into trailer.



STEP 2: Fasten dual-conductor socket into mounting holes with screws (F), washers (U) and nuts (P).



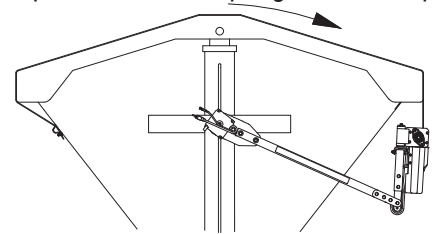
CAUTION

Check all hardware for complete assembly before operating. Inspect and adjust system as required.

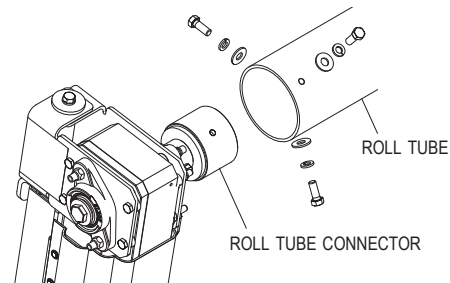
TROUBLESHOOTING

Increase preload on spring if return arms will not lift tarp roll out from under top rail while attempting to close tarp.

- A) Close tarp and let roll tube hang loose to decrease pressure on spring.



- B) Unfasten and remove roll tube connector from roll tube.

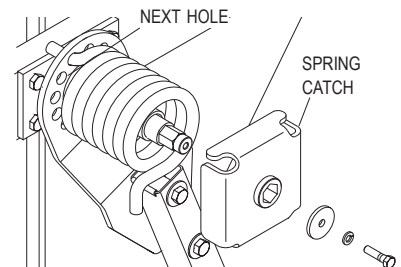


WARNING

Arm is under spring pressure. Do not let go of arm until spring pressure is relieved.

- C) Unfasten hardware and remove spring catch.

- D) Rotate spring to engage in next hole in spring pivot on arm assembly.



NOTE: Adjust in small increments only, one hole at a time.

- E) Replace spring catch and fasten securely. Reassemble motor/front arm to roll tube and fasten securely.

- F) Repeat for rear spring.

OPERATION

- A) Check motor direction by activating switch to **OPEN**. If switch is running system backwards, change wire leads on solenoid or switch to opposite connections.

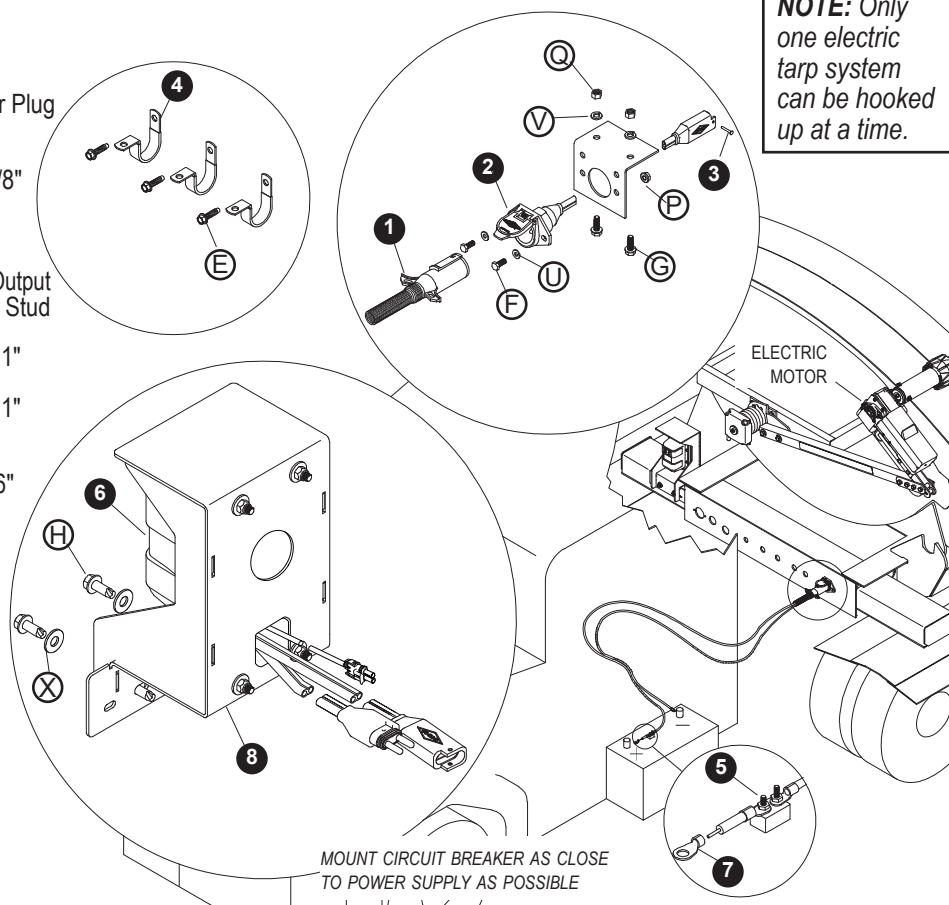
- B) **Close tarp:** Push switch to **CLOSE** and hold. Observe tarp and release switch when tarp is fully closed.

- C) **Open tarp:** Push switch to **OPEN** and hold. Observe tarp and release switch when tarp is fully open.

NOTE: Release switch at end of cycle or auto-reset circuit breaker will trip. After breaker resets, switch will activate motor again. To reduce unnecessary strain on tarp components, release switch at end of each cycle.

Item	Part #	Description
1.	1115385	Heavy-Duty Dual-Conductor Plug
2.	1120670	SMARTwire™ Dual-Conductor Socket
3.	1704751	Harness Lock Pin - 1/4" x 7/8"
4.	1702108	Wire Clip - 3/4"
5.	1704354	40-Amp Modified-Reset Circuit Breaker
6.	1131622	ShurLink™ Receiver - Rear Output
7.	1703244	Ring Terminal - 6 Ga. x 3/8" Stud
8.	1127022	Receiver Bracket Housing
E.	1704338	Self-Tapping Screw - 1/4" x 1"
F.	1701045	Cap Screw - 5/16" x 3/4"
G.	1700400	Self-Tapping Screw - 3/8" x 1"
H.	1705924	Self-Tapping Screw Black - 3/8" x 1"
P.	1704946	Flanged Top Lock Nut - 5/16"
Q.	1700407	Hex Nut - 3/8"
U.	1700427	Flat Washer - 1/4"
V.	1700434	Lock Washer - 3/8"
X.	1705921	Flat Washer - 3/8"

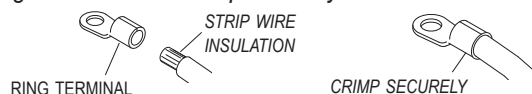
NOTE: Only one electric tarp system can be hooked up at a time.



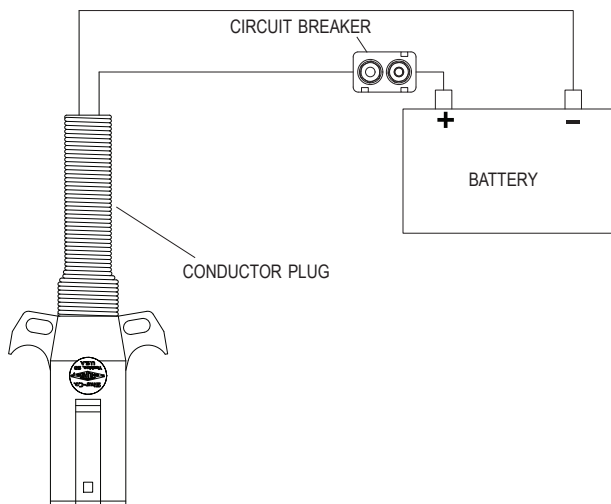
⚠ NOTICE

Do not power any Shur-Co® wireless system with battery charger alone, as this will likely cause system abnormalities and/or system malfunction. Instead, use a 12-volt truck/automobile battery to provide power to trailer.

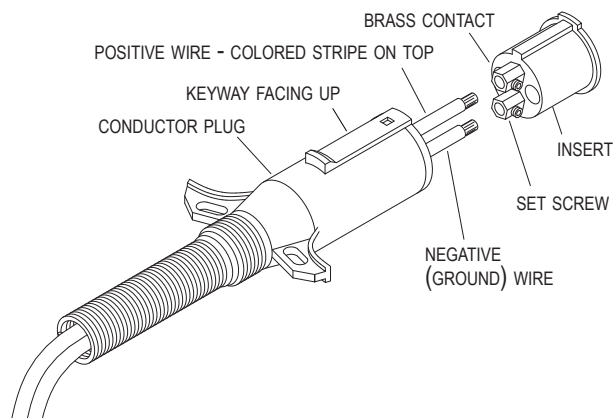
NOTE: Cut wires to length and strip only enough wire insulation to install ring terminals. Insert bare wire into ring terminals and crimp securely.



STEP 1: Mount circuit breaker as close as possible to battery or power supply.



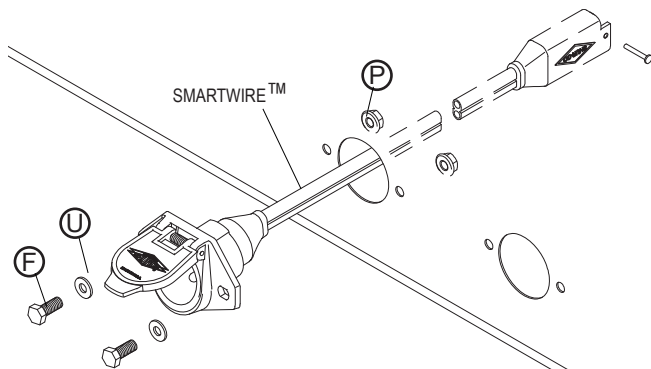
STEP 2: Unfasten and remove insert from conductor plug. Feed 6-ga. wire through plug and into brass contacts on insert. Tighten set screws to secure wires. Replace insert into conductor plug and secure screw.



DUAL-CONDUCTOR SOCKET

NOTE: Wire lengths are predetermined. Before installing SMARTwire™ components, review and confirm wire routing so wires reach components with ample room for connection.

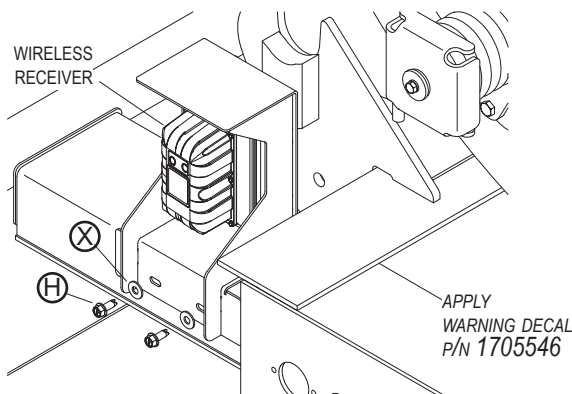
STEP 3: Fasten conductor socket to trailer with cap screws (F), flat washers (U) and nuts (P).



SHUR-CO® WIRELESS RECEIVER

STEP 1: In order to clear travel area of front arm, locate Shur-Co® wireless receiver as low as possible on front of trailer.

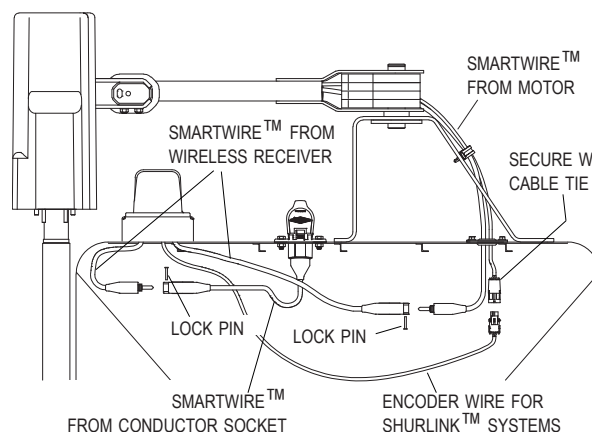
STEP 2: Align holes on wireless receiver with holes on trailer. Fasten receiver to trailer with screws (H), flat washers (X). Adhere warning decal P/N 1705546 above receiver in location shown.



NOTE: Drill holes in trailer if needed, or fasten into existing holes.

WIRING SCHEMATIC

STEP 1: Connect SMARTwire™ from wireless receiver to SMARTwire™ from electric motor. Connect SMARTwire™ plug from wireless receiver to SMARTwire™ from dual-conductor socket. Secure connections with lock pins. If you have the ShurLink™ system, connect encoder wire from receiver to encoder wire from motor. Secure wires to trailer with cable clips and screws. If needed, use cable ties.



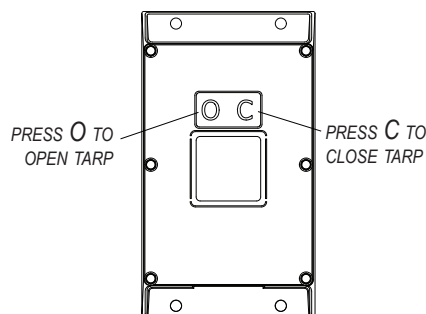
NOTE: Coat each connection with dielectric grease (P/N 1704378) to prevent corrosion.

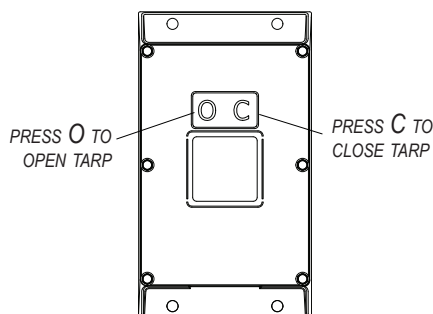
⚠ CAUTION

Check all hardware for complete assembly before operating. Inspect system at this time and adjust as required.

NOTE: RECEIVER may be pressure washed, but keep nozzle at least 3 feet from system while spraying.

STEP 2: Check motor direction by pressing either button. If button is released and operation continues, system is in *Express Mode*. To stop operation, press button again. If switch is running system backwards, program remote to wireless receiver and rewire as directed in troubleshooting guide in remote instructions.





NOTE: 4500 Series HD trailer-mounted control boxes now operate in **EXPRESS MODE**, for both ShurLink™ remote systems. Pressing **O** or **C** button on the control box initiates express open or close operation. After that, pressing either button on the box will stop tarp operation. If neither button is pressed, operation will automatically stop at end of travel. Both EZR™ and PRO remotes are shipped with tarp channel set to **EXPRESS MODE**, and can be configured as desired.

NOTE: Tarp systems operate in **EXPRESS MODE** when using buttons on trailer-mounted control box, if encoder wires are connected. When in **MANUAL MODE**, press and hold buttons (operation will stop if button is released). See remote instruction manual for detailed instructions on remote operation.

NOTE: Tarp systems operate in **EXPRESS MODE** when commanded to operate from buttons on trailer-mounted control box. Closing remote lid or pressing select button will not stop the system in this case. Pressing **OPEN** or **CLOSE** button on remote (if on system channel) will stop system if in range.

! WARNING



**DO NOT OPERATE
MOTORIZED SYSTEMS
WHILE INDIVIDUALS
ARE ON OR OCCUPYING
BOX/TRAILER/HOPPER.**

Decal P/N 1705546

! NOTICE

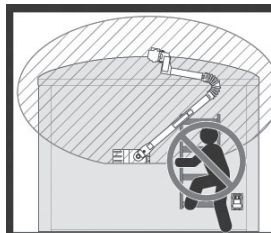
THIS TARP SYSTEM OPERATES IN EXPRESS MODE. UPON PRESSING THE **O**PEN/**C**LOSE BUTTON THE TARP SYSTEM WILL CONTINUE TO TRAVEL TO THE END STOPS. TO STOP THE MOTOR, PRESS EITHER BUTTON. READ OWNERS MANUAL BEFORE OPERATING. CONTACT SHUR-CO® FOR ALL TARP SYSTEM QUESTIONS AT 1-866-748-7435.

! NOTICE

Decal shown above must be placed above wireless receiver on front of box.

! WARNING

Stay clear of roll tarp and arm(s) area of travel during operation. Failure to do so could result in serious injury or death.



! WARNING

Stay clear of the roll tarp and arm(s) sweep area, from front-to-back, during operation. Failure to do so may result in a fall/impact causing serious injury or death. For repair/service of equipment, reference manual for proper safety precautions before proceeding.

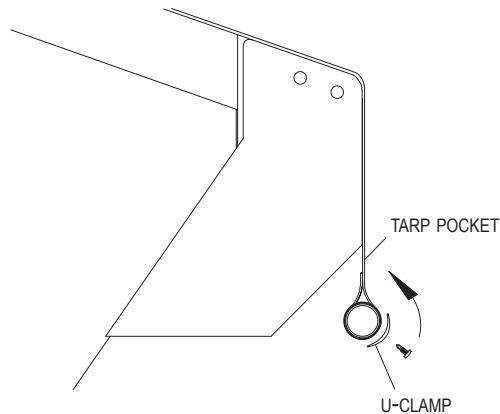
Decal P/N 1705523



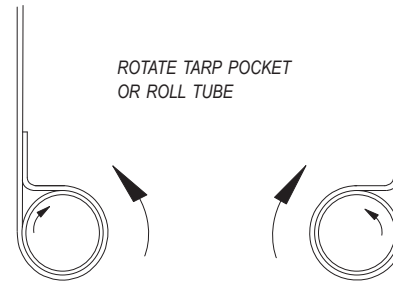
Ideally, tarp should roll completely open evenly (front and back of roll tube stopping in same position). If one end of roll tube is fully opening before other, adjust roll tube and U-clamps as shown so tarp will track more evenly.

STEP 1: Unroll tarp completely, allowing roll tube side of tarp to hang loosely.

STEP 2: Remove U-clamp at front hem of tarp. Rotate tarp pocket 1/8 turn on roll tube and reinstall U-clamp.



STEP 3: Test operation to check tarp tracking. If more adjustment is needed, remove U-clamp, rotate tarp pocket again and recheck operation until tarp is tracking evenly.



TIP: To make it easier to twist tarp pocket, use electric motor to turn roll tube in opposite direction from which you are turning tarp pocket.

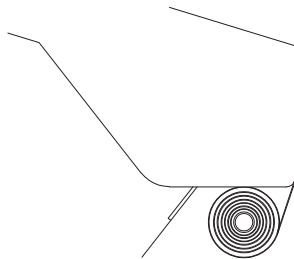
TO STORE TARP

OPTION A:

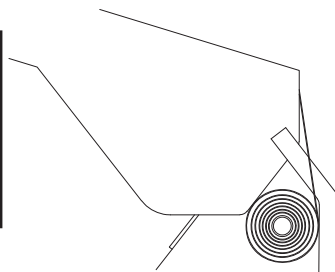
Store tarp under top rail.

STEP 1: Unroll tarp to cover load. Keep unrolling until tarp roll backwinds tightly up underneath left side top rail.

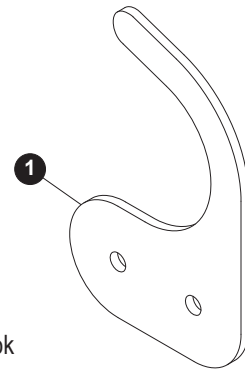
NOTE: If using this option, operator may need to retighten tarp after load settles during transit.



NOTE: If top rail geometry will not allow tarp roll to tightly back wind, retaining hooks may need to be fabricated, or option B may be used.



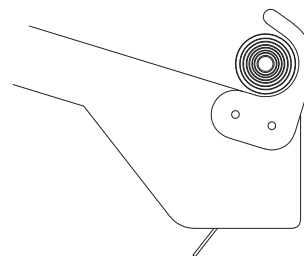
Item	Part #	Description
1.	1120740	Tarp Retainer Hook



OPTION B:

Store tarp against hooks on top of left side top rail.

STEP 1: Position tarp retaining hooks on left side top rail as shown, placing one hook on each end of top rail. Weld hooks in place or drill 1/2 inch holes and fasten with 1/2 inch bolts, if access allows (bolts not included).





WARNING

In case of motor failure, before disconnecting return arms from roll tube while springs are under tension, arms must be supported and secured. Failure to adequately support and secure arms could result in serious injury or death.



WARNING

Do not unroll tarp unless area near left side of trailer is clear of people.

IN EVENT OF MOTOR FAILURE

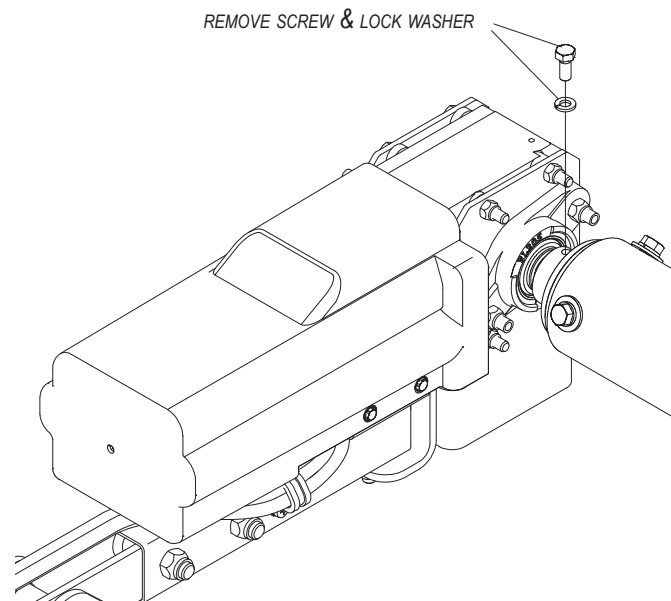
- A) Secure both front and rear return arms with power pullers (come-alongs). Attach power pullers to lower arms (do not connect to upper arm or roll tube). Attach other end of power puller to side of trailer to which tarp is fixed. Tighten power pullers until tension on tarp is relieved. Power pullers will now be securing arms in position.



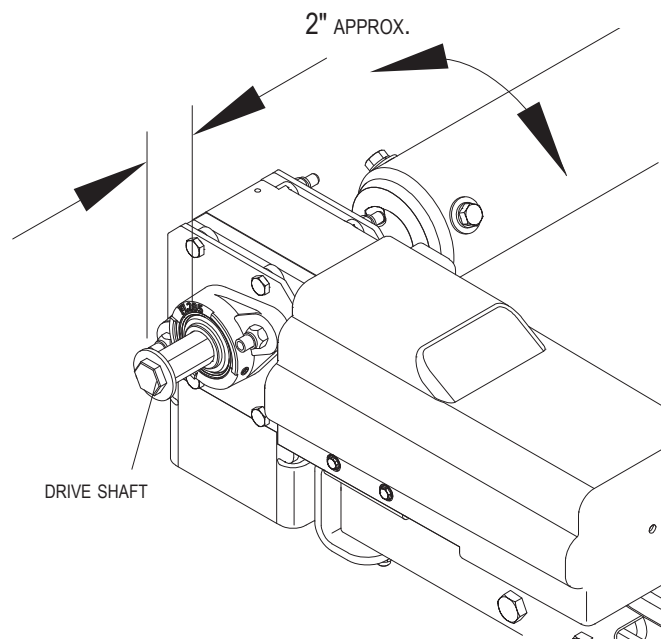
WARNING

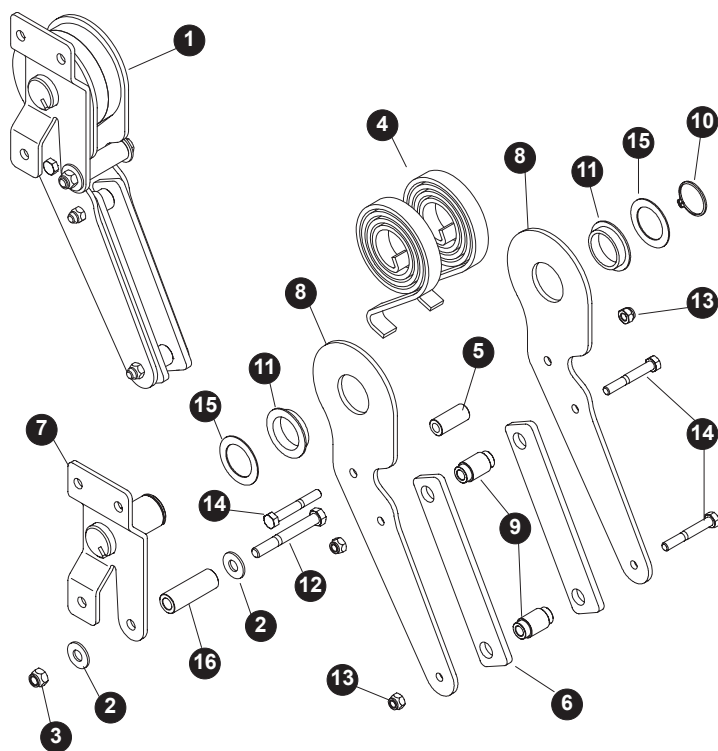
Understand how to safely operate power puller before using.

- B) To release roll tube to turn freely, first remove screw and lock washer from motor assembly as shown.



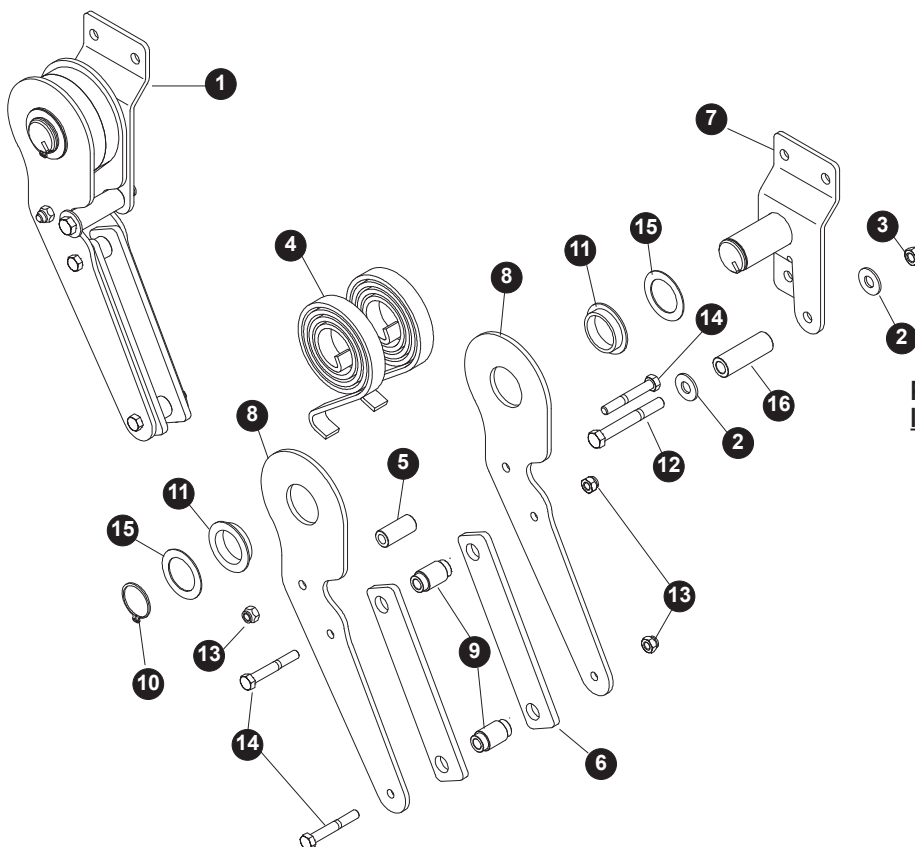
- C) Then pull drive shaft out approximately 2 inches.





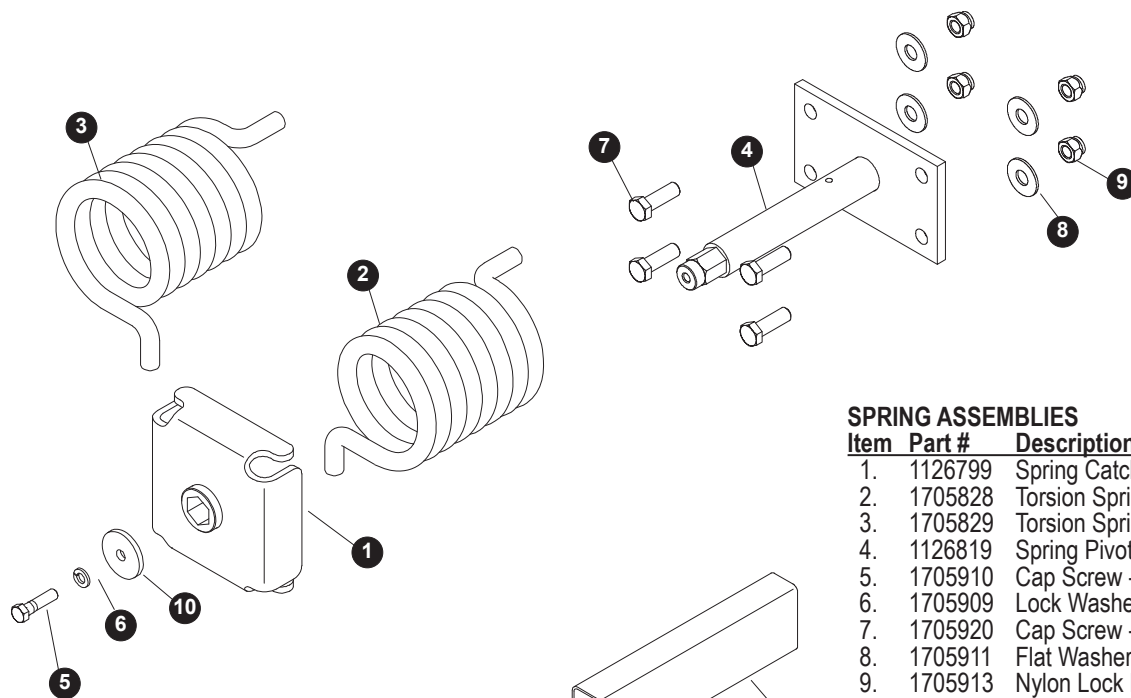
PUSH-OUT ASSEMBLIES - FRONT

Item	Part #	Description
1.	1127015	Push Out Assembly - Front
2.	1705921	Flat Washer - 3/8" - USS
3.	1705918	Nylon Lock Nut - 3/8"
4.	1111027	Spiral Torsion Spring
5.	1120753	Push Out Spring Catch
6.	1120754	Push Out Wear Pad
7.	1127014	Push Out Pivot - Front
8.	1127010	Push Out Plate - Black
9.	1127012	Push Plate Spacer - Black
10.	1702888	Retaining Ring
11.	1704468	Flange Bushing - 1.281" x 1.522"
12.	1705922	Cap Screw - 3/8" x 3"
13.	1705919	Nylon Lock Nut - 5/16"
14.	1705923	Cap Screw - 5/16" x 2-1/4"
15.	1705925	Flat Washer - 1-1/4" x 1-7/8"
16.	1127011	Push Out Stop Tube



PUSH-OUT ASSEMBLIES - REAR

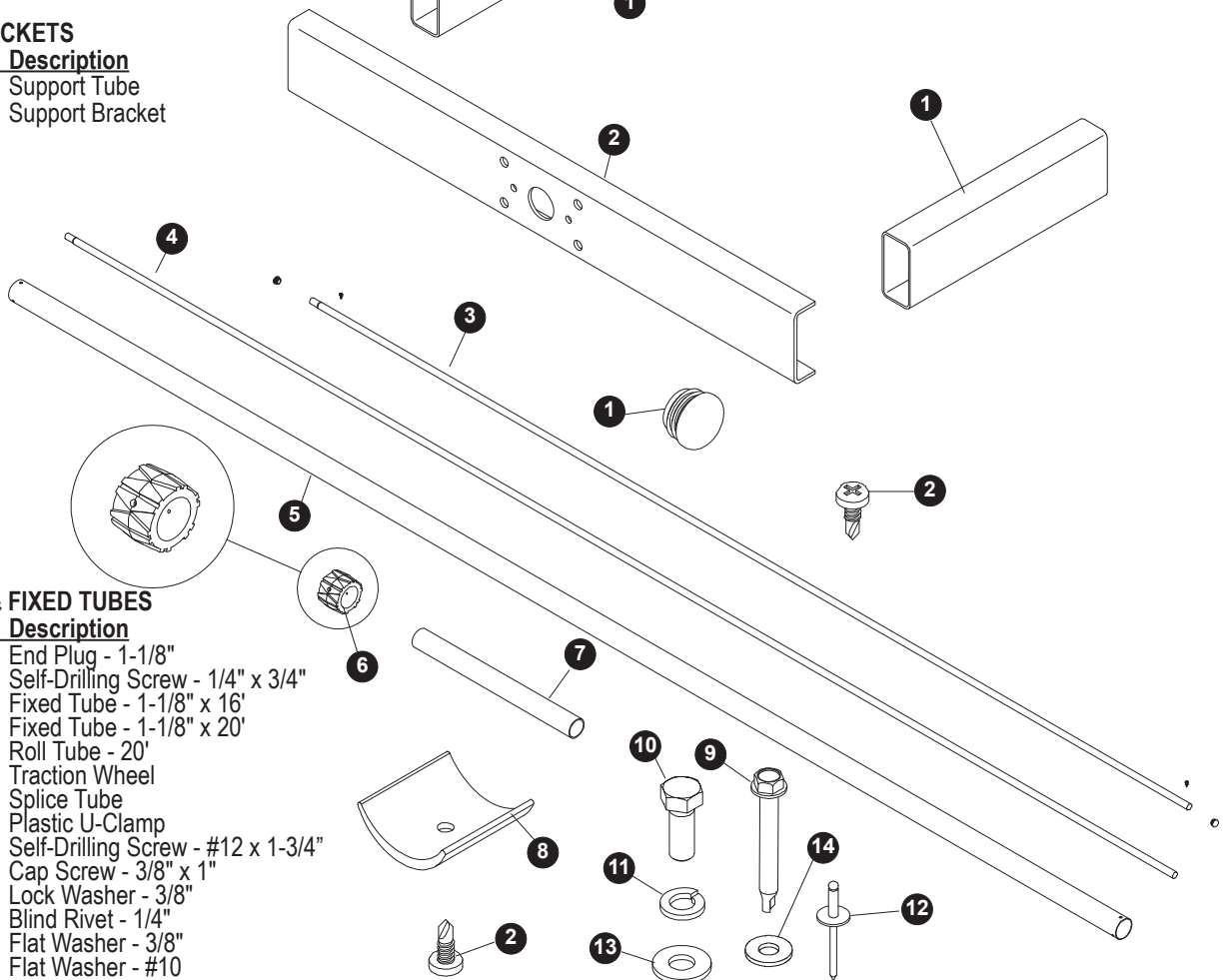
Item	Part #	Description
1.	1127016	Push Out Assembly - Rear
2.	1705921	Flat Washer - 3/8" - USS
3.	1705918	Nylon Lock Nut - 3/8"
4.	1111027	Spiral Torsion Spring
5.	1120753	Push Out Spring Catch
6.	1120754	Push Out Wear Pad
7.	1127013	Push Out Pivot - Rear
8.	1127010	Push Out Plate - Black
9.	1127012	Push Plate Spacer - Black
10.	1702888	Retaining Ring
11.	1704468	Flange Bushing - 1.281" x 1.522"
12.	1705922	Cap Screw - 3/8" x 3"
13.	1705919	Nylon Lock Nut - 5/16"
14.	1705923	Cap Screw - 5/16" x 2-1/4"
15.	1705925	Flat Washer - 1-1/4" x 1-7/8"
16.	1127011	Push Out Stop Tube

**SPRING ASSEMBLIES**

Item	Part #	Description
1.	1126799	Spring Catch
2.	1705828	Torsion Spring - Black - Left Hand
3.	1705829	Torsion Spring - Red - Right Hand
4.	1126819	Spring Pivot Shaft
5.	1705910	Cap Screw - 3/8" x 1-1/2"
6.	1705909	Lock Washer - 3/8"
7.	1705920	Cap Screw - 1/2" x 1-1/2"
8.	1705911	Flat Washer - 1/2"
9.	1705913	Nylon Lock Nut - 1/2"
10.	1126983	Spring Catch Retaining Washer - Black

SUPPORT BRACKETS

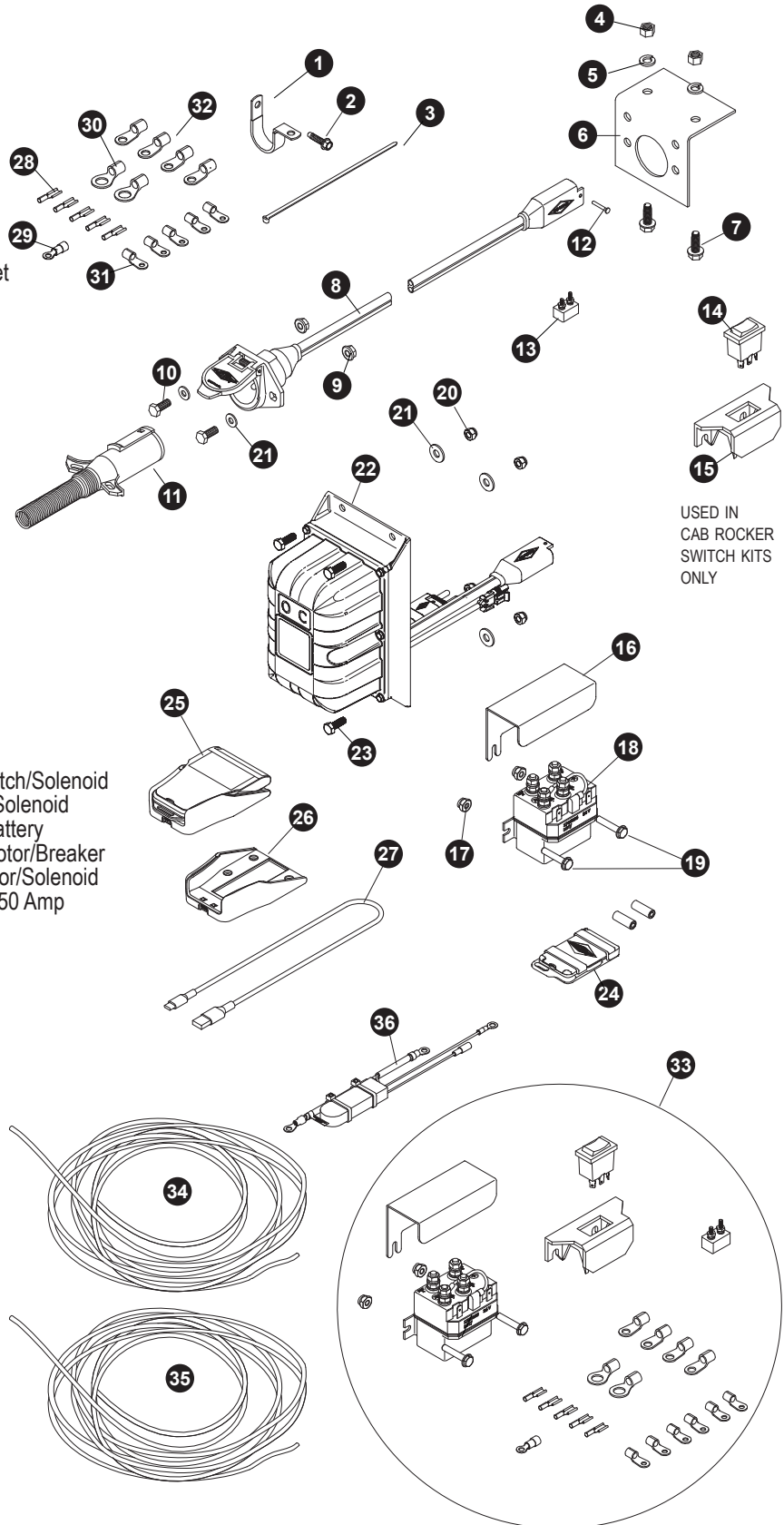
Item	Part #	Description
1.	1126824	Support Tube
2.	1126810	Support Bracket

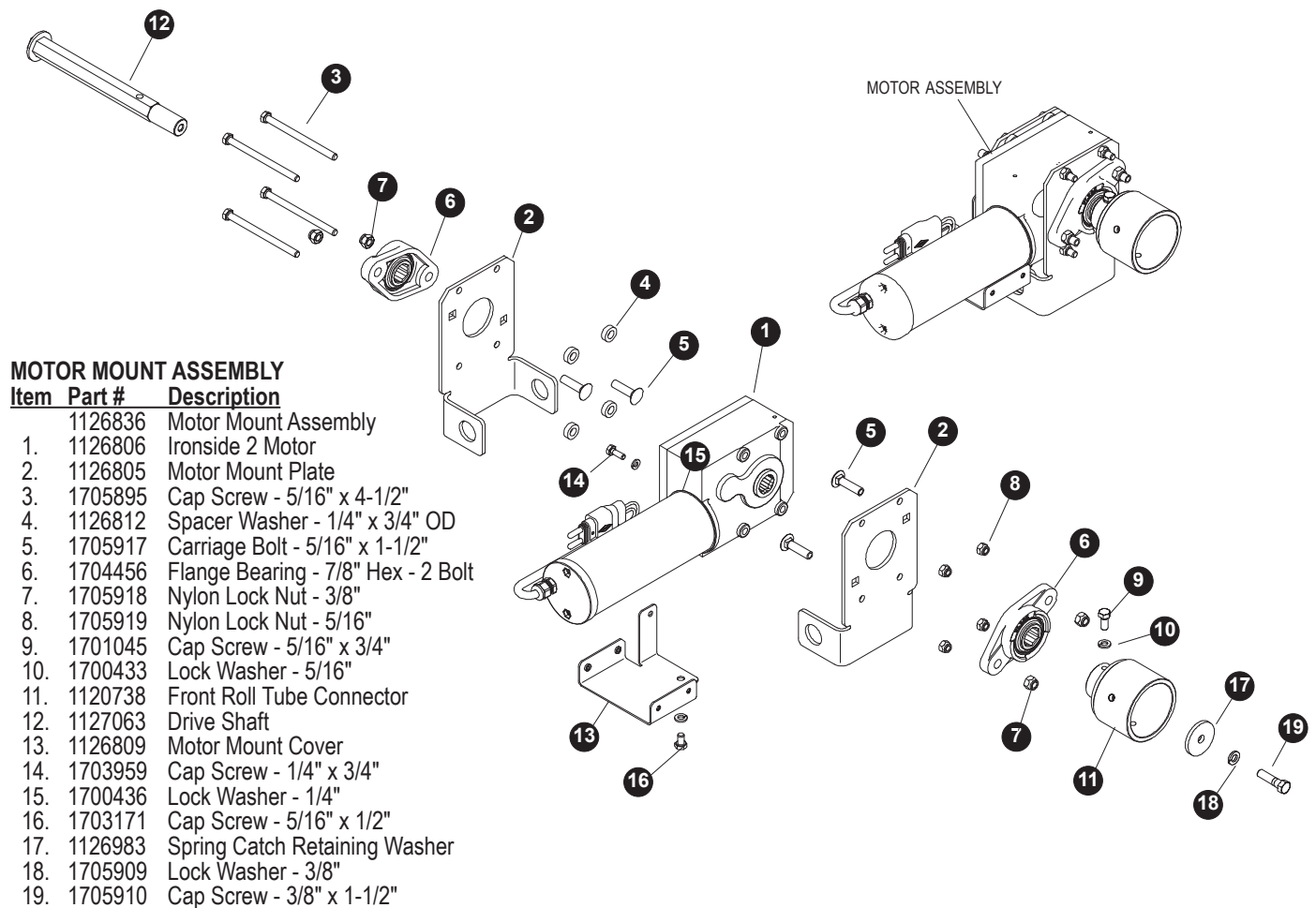
**ROLL TUBES & FIXED TUBES**

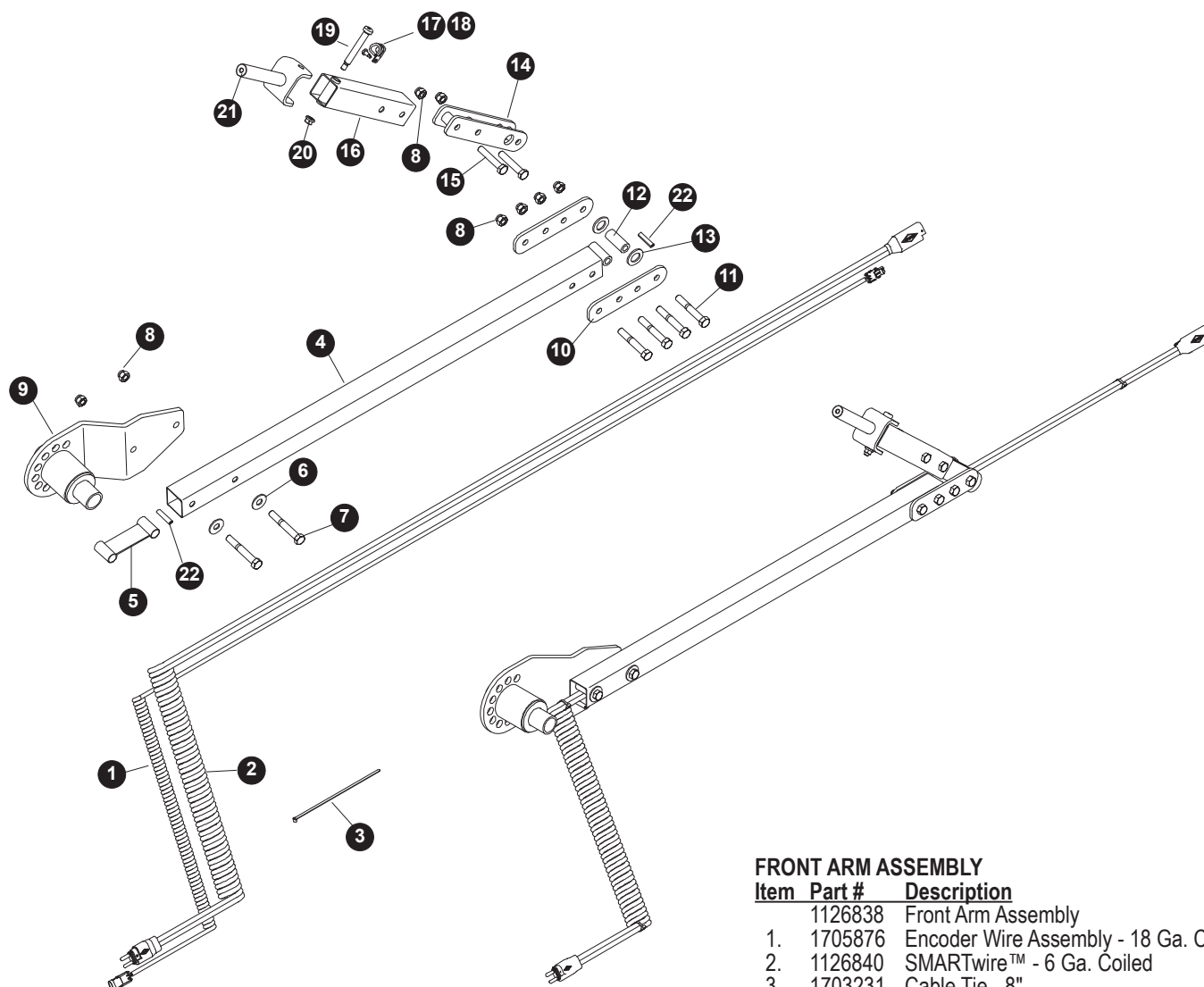
Item	Part #	Description
1.	1700523	End Plug - 1-1/8"
2.	1700398	Self-Drilling Screw - 1/4" x 3/4"
3.	1700051	Fixed Tube - 1-1/8" x 16'
4.	1700049	Fixed Tube - 1-1/8" x 20'
5.	1120913	Roll Tube - 20'
6.	1705706	Traction Wheel
7.	1120911	Splice Tube
8.	1701354	Plastic U-Clamp
9.	1705415	Self-Drilling Screw - #12 x 1-3/4"
10.	1701061	Cap Screw - 3/8" x 1"
11.	1700434	Lock Washer - 3/8"
12.	1700472	Blind Rivet - 1/4"
13.	1700429	Flat Washer - 3/8"
14.	1111054	Flat Washer - #10
15.	1809211	Thread Lock (not shown)

ELECTRIC WIRING

Item	Part #	Description
1.	1702108	Wire Clip - 3/4"
2.	1704338	Self-Tapping Screw - 1/4" x 1"
3.	1703231	Cable Tie - 8"
4.	1700407	Hex Nut - 3/8"
5.	1700434	Lock Washer - 3/8"
6.	1109015	Mounting Bracket
7.	1700400	Self-Tapping Screw - 3/8" x 1"
8.	1120670	SMARTwire™ Dual-Conductor Socket
9.	1704946	Flanged Top Lock Nut - 5/16"
10.	1701045	Cap Screw - 5/16" x 3/4"
11.	1115385	Heavy-Duty Dual-Conductor Plug
12.	1704751	Harness Lock Pin - 1/4" x 7/8"
13.	1703480	50-Amp Auto-Reset Circuit Breaker
14.	1116020	Rocker Switch
15.	1703661	Rocker Switch Mounting Bracket
16.	1703896	Solenoid Cover
17.	1808844	Nylon Lock Nut - #10
18.	1703845	Motor-Reversing Solenoid
19.	1704905	Flanged Cap Screw - #10 x 1"
20.	1700419	Lock Nut - 5/16"
21.	1700427	Flat Washer - 1/4"
22.	1131622	ShurLink™ Receiver - Rear Output
23.	1702926	Cap Screw - 5/16" x 7/8"
24.	1131576	5-Channel ShurLink EZR™ Remote
25.	1131575	ShurLink PRO™ Remote w/Cradle & Charging Cradle
26.	1131764	ShurLink PRO™ Charging Cradle
27.	1706836	USB Charging Cable Type A to C
28.	1703659	Push-On Terminal - 14 Ga. 1/4" - Switch/Solenoid
29.	1704153	Ring Terminal - 14 Ga. x 1/4" Stud - Solenoid
30.	1703244	Ring Terminal - 6 Ga. x 3/8" Stud - Battery
31.	1703245	Ring Terminal - 6 Ga. x #10 Stud - Motor/Breaker
32.	1702707	Ring Terminal - 6 Ga. 1/4" Stud - Motor/Solenoid
33.	1116271	Electrical Parts Kit - Rocker Switch - 50 Amp
34.	1116482	Electric Wire - 14 Ga. - 3 Lead - 15'
35.	1118495	Dual Conductor Wire - 6 Ga. - 30'
36.	1705631	SMART™ Circuit Breaker - 80 Amp



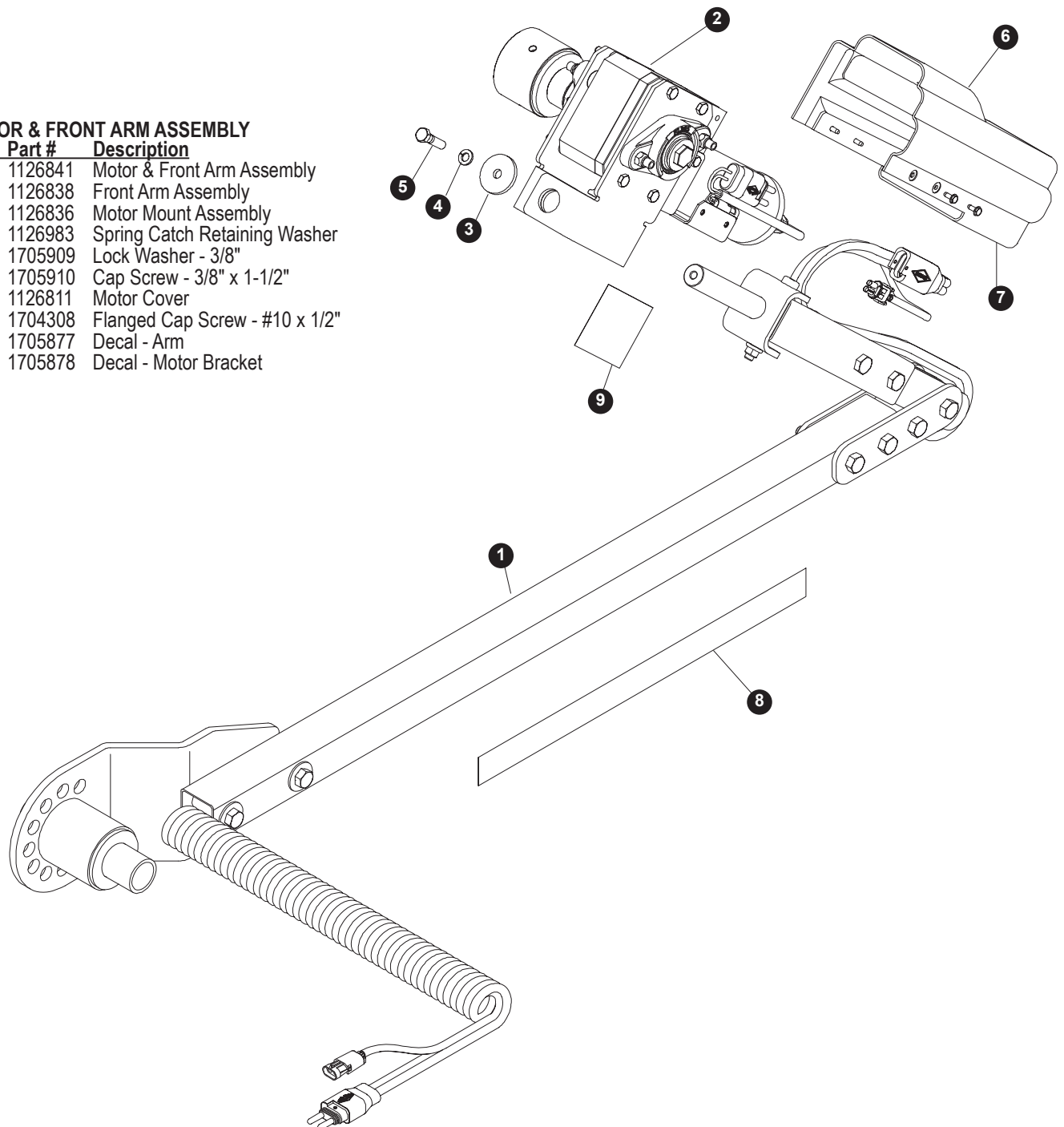


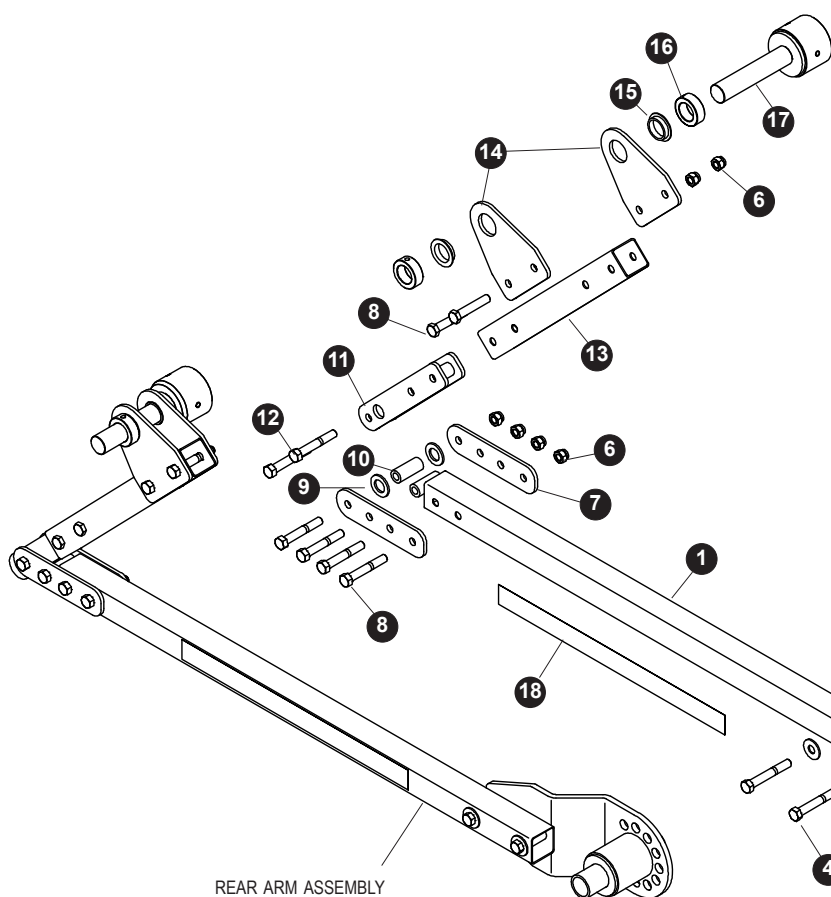
**FRONT ARM ASSEMBLY**

Item	Part #	Description
	1126838	Front Arm Assembly
1.	1705876	Encoder Wire Assembly - 18 Ga. Coiled
2.	1126840	SMARTwire™ - 6 Ga. Coiled
3.	1703231	Cable Tie - 8"
4.	1126977	Lower Arm Tube
5.	1126813	Dog Bone Spacer
6.	1705911	Flat Washer - 1/2"
7.	1705912	Cap Screw - 1/2" x 3-1/2"
8.	1705913	Nylon Lock Nut - 1/2"
9.	1126794	Spring Pivot
10.	1127006	Lower Arm Hinge Plate
11.	1705914	Cap Screw - 1/2" x 3-1/4"
12.	1127007	Lower Arm Hinge Spacer
13.	1704810	Flat Washer - Bronze - 1/8" x 1-1/2" OD
14.	1127008	Upper Hinge
15.	1705915	Cap Screw - 1/2" x 2-3/4"
16.	1126801	Upper Arm Tube
17.	1702108	Wire Clip - 3/4"
18.	1700398	Self-Drilling Screw - 1/4" x 3/4"
19.	1705896	Shoulder Bolt - 1/2" - 3/8" x 1/2" Thd.
20.	1705916	Flanged Nylon Lock Nut - 3/8"
21.	1126803	Upper Arm Universal
22.	1704396	Edge Guard 5/16" x 1-5/8"

MOTOR & FRONT ARM ASSEMBLY

Item	Part #	Description
	1126841	Motor & Front Arm Assembly
1.	1126838	Front Arm Assembly
2.	1126836	Motor Mount Assembly
3.	1126983	Spring Catch Retaining Washer
4.	1705909	Lock Washer - 3/8"
5.	1705910	Cap Screw - 3/8" x 1-1/2"
6.	1126811	Motor Cover
7.	1704308	Flanged Cap Screw - #10 x 1/2"
8.	1705877	Decal - Arm
9.	1705878	Decal - Motor Bracket

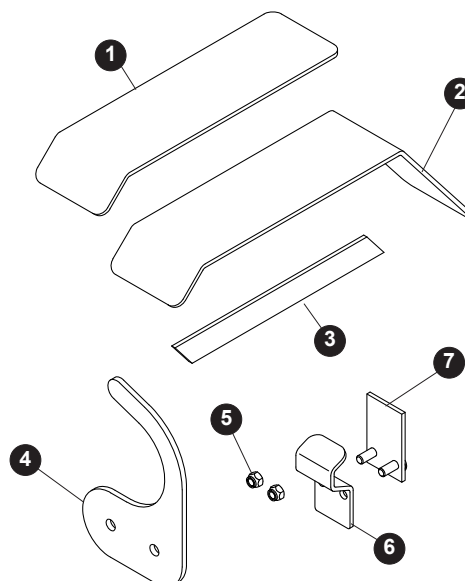




REAR ARM ASSEMBLY

Item	Part #	Description
	1126843	Rear Arm Assembly
1.	1126977	Lower Arm Tube
2.	1126794	Spring Pivot
3.	1126813	Dog Bone Spacer
4.	1705912	Cap Screw - 1/2" x 3-1/2"
5.	1705911	Flat Washer - 1/2"
6.	1705913	Nylon Lock Nut - 1/2"
7.	1127006	Lower Arm Hinge Plate
8.	1705914	Cap Screw - 1/2" x 3-1/4"
9.	1704810	Flat Washer - Bronze - 1/8" x 1-1/2"
10.	1127007	Lower Arm Hinge Spacer
11.	1127008	Upper Hinge
12.	1705915	Cap Screw - 1/2" x 2-3/4"
13.	1126976	Upper Arm Tube
14.	1127009	Idler Shaft Bearing Plate
15.	1704468	Flange Bushing - 1.281" x 1.522"
16.	1704807	Locking Collar - 1-1/4"
17.	1120736	Rear Roll Tube Connector
18.	1705877	Decal - Arm

REAR ARM ASSEMBLY



MISCELLANEOUS

Item	Part #	Description
1.	1121980	Tarp Cradle Extension
2.	1120748	Tarp Cradle
3.	1121979	Tarp Cradle Gusset
4.	1120740	Tarp Retainer Hook
5.	1705918	Nylon Lock Nut - 3/8"
6.	1126978	Fixed Tube Clamp
7.	1120733	Fixed Tube Anchor

2309 SHUR-LOK STREET • YANKTON, SD 57078-0713
PHONE: 1-800-SHUR-LOK (800-474-8756) • FAX: 1-605-665-0501
www.SHURCO.com