



A003PG-0319

## THE COMPLETE SMARTRAILER™ LINE



Check out the  
highlights of our  
4500 Series HD  
electric tarp!

[www.shurco.com](http://www.shurco.com)

Shur-Co® History  
SMARTrailer™ Electrics  
SMART2™ and SMART3™ Remotes  
Shur-Lok® Electric  
4500 Series HD Electric Tarp  
Tater-Top™ Electric Tarp  
AutoTrap™ and ProTrap® Hopper Openers  
DriveMaxx™ Auger Drive Kit  
Electric Gate and Hoist System  
AutoGate™ Gate Runner  
Electric Turning Point™ Bow System  
TrapAdapt™ Manual Trap Opener  
LiteALL™ LED Work Light Packages  
Electric Systems Order Forms  
Genuine Shur-Co® Replacement Parts  
Terms and Conditions  
NEW! Service Truck Power Kits

pgs. 2-3  
pg. 4  
pg. 5  
pg. 6  
pgs. 7-13  
pgs. 14-15  
pg. 16-17  
pg. 18  
pg. 19  
pg. 20  
pg. 21  
pg. 22  
pgs. 23-24  
pgs. 25-28  
pgs. 29-49  
pg. 50  
pg. 51

## WHAT OUR CUSTOMERS SAY

“ One of the reasons I wanted to go with a 4500 Series HD electric roll tarp was because I felt that, with the down pressure from the spring-loaded arms, it would be better in windy conditions during field use, and it has not disappointed. With the down pressure on both the front and rear, it handles wind much better than a manual roll tarp. Besides the convenience, there is also a time savings factor. The driver can roll over the tarp as he is pulling out of a field and unroll it as he is pulling onto a scale. Over a season, this adds up, especially during harvest. We went with the Shur-Co® 4500 HD because of the heavy-duty design, overall quality, reputation of the company and the close vicinity of a local dealer. I also really enjoy the programmable wireless remote. No regrets.”

– Harry Jiles, Jiles Farms, Inc., Arrowsmith, IL

“ It's like I'm always telling my customers, 'Buy the best or I'll fix the rest.' Whenever someone asks for my recommendation, I say, 'Put on a Shur-Co®; you won't be back for repairs.' Then I say, 'But I'll be glad to fix the other brands – it's up to you.' Also, my customers love the ease and convenience of your SMARTrailer™ electric accessories!”

– Tim Harms, President, Harms Trucking Co., Minooka, IL

“ I am very impressed with the ease of installation and operation of the SMART2™ remote. I like the idea of having a charging unit on it. The ease of programming is so simple, especially with the one-touch (SMART-touch) open and close. The digital display makes it very simple for the customer to learn the operation . . . I am also impressed with the clean design. In my opinion, you have the best product in its market!”

– Bryan Kelchen, Buckshot Repair, La Porte City, IA

“ The 4500 Series HD electric roll tarp is easy to install and has been a durable product. It gives me the peace of mind I need in the field on days when the wind is blowing. ”

– Jamie Jacksen, Egeland, ND

“ Shur-Co's 4500 Series HD electric roll tarp is hands down the best I have ever used. The installation was easy, and the instructions are straightforward.”

– Stan Sunderman, Sunderman Farms, Otis, CO

“ I have two of Shur-Co's 4500 Series HD electric roll tarps. Like many things, a luxury once enjoyed becomes a necessity. It took me one time to use the system to know how much work and time this was going to save. Most elevators want the tarp rolled back before you pull on the scale. I feel sorry for the guys that still have to stop to get out before pulling on the scale. And do I even have to mention rainy days or fighting a tarp on a windy day? I'll never live without an electric tarp again.”

– Tom Roberts, Roberts Enterprises, LLC, New Ulm, MN

“ I have bought five 4500 Series HD electric roll tarps in the last three years, and it is a great product with easy installation. I have had no problems whatsoever. The systems even work well in the winter when the tarps are cold and stiff.”

– Jarrod Robertson, Robertson Farms, Elkton, KY

“ I had a Shur-Co® electric tarp put on my 48-foot Wilson hopper trailer because I didn't want my tarp blown off when it's windy. I also had it put on to conserve time. Whether I'm loading or unloading my trailer, I can close or open my tarp with no delay when I am driving to a probe or back to a scale. It saves me a considerable amount of time. I would recommend a Shur-Co® 4500 Series HD electric roll tarp to anyone with a hopper trailer.”

– Nathan Nelson, Owner/Operator, Double N Transport, Page, ND

## COMPANY TIMELINE

- 1954** A shoe repair shop opens in Wahpeton, ND, moves into tarp repair and then new tarps.
- 1969** Growing tarp demand results in the creation of Wahpeton Canvas Company (WCCO).
- 1980** *The Original Shur-Lok®* roll tarp is born. The simple, yet reliable invention revolutionizes the tarping industry.
- 1992** The truck cover division of the company splits off from WCCO and relocates to Yankton, SD.
- 1996** A name change to Shur-Co® more closely identifies the company with the Shur-Lok®, its best-known product.
- 2000** Shur-Co® enters the auto accessories field with its TruXedo® line (to be spun off as its own company in 2007 under new ownership).
- 2001** Acquisition is made of a highly automated metal fabrications operation.
- 2003** Shur-Co® is named South Dakota's Family Business of the Year.
- 2006** Shur-Co® moves into trailer automation with the launch of the 3500 Series electric upgrade for the Shur-Lok®. Like the introduction of the Shur-Lok® itself, 40 years ago, the 3500 is unlike anything in the electric tarp market.
- 2008** State-of-the-art expansion allows Shur-Co® to keep up with increasing product demand, bringing the company's total manufacturing area to 150,000 square feet.
- 2009** The ProTrap® electric hopper opener and five-channel SMARTransmitter® are launched to complement the 3500, for an expanded line of SMARTrailer™ products.
- 2010** Shur-Co®, LLC is formed with the existing management team, sparking unprecedented growth and global market expansion.
- 2012** More products join the Shur-Co® lineup: SMART2™ and SMART1+™ remotes, 4500 Series HD electric tarp, LiteALL™ work lights, DuraPull™ semi-auto pull tarp and IronSide™ side dump system. Later in the year, Shur-Co® acquires Donovan Enterprises, a top name in waste and construction tarp systems, with locations in Michigan, Florida and the UK – positioning Shur-Co® for global growth.
- 2014** Roll-Tite™ is acquired and rebranded as ShurTite™ – an industry-leading retractable tarp system for flatbed trailers, dropdecks, straight trucks and specialty vehicles.
- 2015** Global expansion continues as Shur-Co® sells products to over 30 countries on 6 continents.
- 2016** Growth continues as a branch dedicated to ShurTite™ installs and repairs opens in Sioux Falls, SD. Shur-Co® of ND moves into a new 24,000 square foot facility in West Fargo with increased installation capabilities and better product distribution. Shur-Co® of IL, having outgrown its previous location, relocates to a new 16,000 square foot facility in Decatur, adding ShurTite™ installs to its shop activities.
- 2017** Shur-Co® rolls out its SWAT™ system for roll-off trucks and trailers in the waste market and the Tater-Top™ roll tarp for potato trailers. The company also celebrates 25 years in its Yankton, SD location.
- 2018** Shur-Co's continued focus on innovation adds additional products to its SMARTrailer™ line: the Electric Gate and Hoist and DriveMaxx™ Swing Auger Drive Kit.
- 2019** The products keep on coming! Shur-Co® adds the 4500 HD for grain cart applications, the AutoGate™ Gate Runner, TrapAdapt™ Manual Hopper Opener and Service Truck Power Kits.

COMMITTED TO CUSTOMER SATISFACTION

3

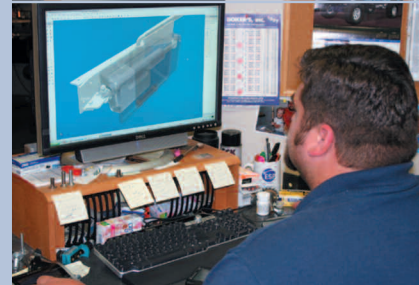
## SUPERIOR MATERIALS AND WORKMANSHIP

Shur-Co® proudly serves our customers with 10 sales, service and distribution locations throughout North America, plus an ever-expanding global presence. We have the best-designed, best-engineered and best-built tarping systems on the market.

Our 150,000 square foot production site has its own dedicated tarp and metal fabrication facilities, giving us complete control over the products we produce. Exacting workmanship is key; our employees have a strong Midwest work ethic and are willing to go the extra mile to provide customers with a superior-quality product. They take pride in their jobs, and their dedication and attention to detail has earned us the respect of the tarping industry.

Shur-Co® never cuts corners. For our tarps, we use the finest solid vinyl-coated fabric with built-in UV inhibitors to reduce sun damage and fading. Each lot is lab tested for tear strength, abrasion resistance and cold-temperature flexibility.

Shur-Co® quality shows, even in the smallest details: Reinforced stitching adds strength at stress points, reducing the likelihood of tears. Seams are heat welded for a watertight bond between panels; the added thickness creates an improved moisture barrier. Roll tubes, fixed tubes and bows are made from Gatorshield™ galvanized steel tubing, with 50 percent more zinc than standard galvanized processes, ideal for high-moisture applications. All other steel components are plated to stand up to harsh road treatment chemicals. Aluminum, stainless steel and powder-coated parts are also available – and many come standard – when added protection is needed for corrosive environments.



# THE NEW AGE OF TRAILER AUTOMATION

4



## THE SMARTTRAILER™ LINE



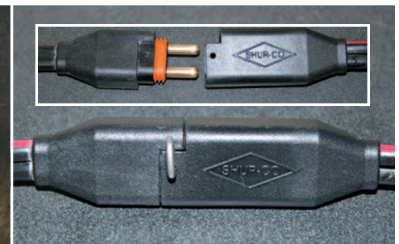
**SMARTTrailer™** electrics help you do the job faster, easier and with increased productivity – even the install is simple. Tarps, traps and box gate and hoist all come standard with a sealed control box and quick-connect sealed SMARTwire™ harness – a Shur-Co® exclusive.

Our SMARTTrailer™ electric accessories are designed to prevent corrosion of connectors and reduce installation time. Sealed connections mean that no additional wire stripping or crimping is required. You get plug-and-play convenience, plus a 12-volt tap to supply power for LiteALL™ work lights. The patented SMARTwire™ harness has molded rubber connectors and silicon seals, 1/4-inch brass pins and sockets and dual 6-gauge wiring.

Additional design features also contribute to faster installs. The mounting bracket for the 4500 HD matches your trailer's rib-and-rivet spacing. The ProTrap® comes fully assembled.

The SMARTTrailer™ line of electrics can be operated with Shur-Co's SMART2™ or SMART3™ remotes. These state-of-the-art transmitters provide precise control from the safety and comfort of the cab to boost your productivity and end results.

**SMARTTrailer™ Products:** SMART2™ and SMART3™ Remotes, Shur-Lok® Electric, 4500 Series HD Electric Tarp, AutoTrap™ Electric Hopper Opener, ProTrap® Electric Hopper Opener, Electric Gate and Hoist System, DriveMaxx™ Auger Drive Kit, Tater-Top™ for Potato Trailers, AutoGate™ Gate Runner, Electric Turning Point™ Bow System, TrapAdapt™ Manual Hopper Opener, Lite-ALL™ LED Work Lights and Service Truck Power Kits.



## MOST ADVANCED REMOTES ON THE MARKET

5

### SMART<sup>2</sup>™ AND SMART<sup>3</sup>™ REMOTES

SMART-touch technology for the most precise control on the market today! The SMART<sup>2</sup>™ remote offers industry-leading 2-way communication in an easy-to-read digital display. The SMART<sup>3</sup>™ has a popular, simple-to-use 5-channel interface, *plus* additional features.

These remotes operate the 4500 Series HD, AutoTrap™ and ProTrap®, Gate and Hoist system, DriveMaxx™ auger drive, Tater-Top™ system, AutoGate™ gate runner and LiteAll™ LED work lights. They provide advanced motor protection – you know right away if a motor slows or stalls – and make operation safe and easy! Transmitters have an emergency shut-off; close the flip-style lid – whatever is running stops immediately.

The SMART<sup>2</sup>™ senses and displays over 100 devices, relaying real-time positioning of tarps and traps. Constructed of impact-resistant ABS plastic, it features a 2-1/2-inch digital screen that's backlit for night operation. This remote doesn't just open or close chosen applications, it lets you specify exact positioning. Automatically open tarps away from the stops to save on wear and tear and maintenance. Or open traps based on capacity of the elevator pits.

The SMART<sup>3</sup>™ is simple to use – switch between applications with the Select button, only cycling between those you've installed. Plus, you get increased range and Express Mode capabilities. The AAA battery compartment lid removes with a single screw for easy access.

**Key Features:** SMART<sup>3</sup>™ Remote w/AAA Batteries (2). SMART<sup>2</sup>™ Remote w/Rechargeable Lithium Battery, Charging Cradle, 12-Volt Automotive-Style Charging Cable.



## THE LIGHT-DUTY MOTOR OPTION



### SHUR-LOK® ELECTRIC



The Shur-Lok® Electric accommodates existing Shur-Loks and Cable-Loks on sloped or vertical trailers and boxes, works with minimum clearance and is easy to install. The light-duty Durabuilt™ motor offers manual override capability and mounts on either the front or rear.

Works on bodies up to 34 feet long. Equipped with a front and rear bungee return (cable return upgrade available) and durable steel components, it can be installed up against the box to handle tight clearances between cab and body. It comes in galvanized steel or stainless steel for added corrosion resistance, with applications for farm boxes with hoist, grain trailers and fertilizer tenders.

The versatility of having a light-duty motor option allows you to better fit your trailer size and configuration. Proper motor choice can affect how much tension your tarp creates over the bows and end caps when in the closed position. This impacts wind flutter control and tarp wear and can also affect how the tarp rolls and handles stresses during operation.

**Key Features | Rocker Switch:** Durabuilt™ Motor, Wire or SMARTwire™ w/Dual-Conductor Plug, Switch, Solenoid, Breaker, Arm, Bungee Return.

**Key Features | SMART Remotes:** Durabuilt™ Motor, SMARTwire™ w/Dual-Pole Plug, Switch, Solenoid, Breaker, Arm, Bungee Return, SMART2™ or SMART3™ Wireless Kit.

NOTE: SMART remotes will NOT operate in Express Mode.



## HEAVY-DUTY ARMS GUARANTEED FOR LIFE



7

### 4500 SERIES HD FOR TRAILERS AND END DUMPS

Power for your grain trailers, end dumps and live bottoms! American-made motor with all-metal gearbox and reliable magnetic brake moves heavy-duty aluminum torsion arms with spiral-reinforced elbows. Designed with the range and flexibility to move smoothly over loads.

Available for all trailer makes and models! The 4500 Series HD produces optimal rather than increased torque, so it won't harm your tarping system. A patented dual-pivoting motor mount allows for any misalignment of the roll tube without stress to the system.

Heavy-duty arms are the strongest in the industry, backed with a lifetime warranty against breakage. Arms come preassembled with a sturdy mounting bracket and are inset to prevent obstruction of clearance lights. The low-friction roller bearing-style rear arm bracket won't wear out. An additional GateFlex™ joint bypasses hinges to accommodate tailgates.

**Key Features | Grain Trailer:** 4-Spiral Torsion Springs per Arm, Heavy-Duty Rear Cable Return w/Single-Arm Series, Heavy-Duty Aluminum Brackets, Heavy-Duty Aluminum Arms, Cab Wiring Kit for Standard Electric Hardware or Trailer Wiring Kit for SMARTwire™ Systems, Exposed Spline, SMART2™ or SMART3™ Remotes,

**Key Features | End Dumps and Live Bottoms:** 4-Spiral Torsion Springs per Arm, Shur-Strap™ or Heavy-Duty Rear Cable Return w/Single-Arm Kits, Heavy-Duty Aluminum Brackets, Rear Knife-Gate Beam Bracket w/Knife-Gate Trailers, Heavy-Duty Aluminum Arms, Cab Wiring Kit for Standard Electric Hardware or Trailer Wiring Kit for SMARTwire™ Systems, Gate Flex™ w/Double-Arm Kits, Exposed Spline w/Single-Arm Kits w/Shur-Strap™.



In the chart at right, features that come standard for Grain Trailers are indicated, but you can also see what options are available for this application in each category.

The plus sign (+) indicates that it would be an additional cost, a minus sign (-) lets you know it would cost less than standard and N/C indicates no difference in price.



4-SPIRAL TORSION SPRING



HEAVY-DUTY REAR CABLE RETURN



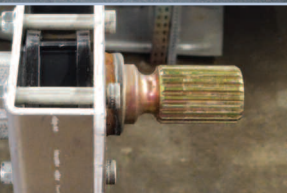
HEAVY-DUTY ALUMINUM BRACKET



HEAVY-DUTY ALUMINUM ARM



PATENTED SMARTWIRE™



EXPOSED SPLINE



CRANK RETAINER



SMART 3™ REMOTE

## FEATURES AND OPTIONS

|  |          |
|--|----------|
| <b>RETURNS</b>   |          |
| 4-Spiral Torsion Springs per Arm                               | Standard |
| HD Rear Cable Return – Standard w/Single-Arm Kits w/Alum. Caps |          |
| <b>MOUNTING BRACKETS</b>                                       |          |
| Heavy-Duty Aluminum Brackets                                   | Standard |
| <b>TORSION ARMS</b>  |          |
| Heavy-Duty Aluminum Arms                                       | Standard |
| <b>WIRING</b>  |          |
| Cab Wiring Kit (6 Ga.) – Standard w/30' Wire/Electric Hardware |          |
| Trailer Wiring Kit (6 Ga.) – Standard w/SMARTwire™             |          |
| Cab Wiring Kit (6 Ga.) – Existing SMARTwire™                   | –        |
| Trailer Wiring Kit (6 Ga.) – Cab Wiring Only                   | –        |
| Trailer Wiring Kit (6 Ga.) – Existing w/o SMARTwire™           | +        |
| <b>SPLINE CAPABILITY</b>                                       |          |
| Exposed Spline   | Standard |
| <b>ELECTRICS</b>   |          |
| Rocker Switch  |          |
| SMART3™  |          |
| SMART2™  |          |
| <b>A TRAIN SETUP - LEAD/PUP</b>                                |          |
| Lead Wiring Kit (4 Ga.) w/SMARTwire™                           | Standard |
| Coiled Wire (4 Ga.) w/Dual-Conductor Plug - 15'                | Standard |
| Coiled Wire (4 Ga.) w/Dual-Conductor Plug - 20'                | +        |
| <b>ACCESSORIES</b>   |          |
| Crank Retainers - P/N 1121864 (2)                              | +        |
| Extra SMART3™ Remote   | +        |
| SMARTwire™ 2-Light Kit w/o Remote - SMART3™                    | +        |
| SMARTwire™ 2-Light Kit w/o Remote - SMART2™                    | +        |

Single-arm kits include heavy-duty cable return for rear of trailers with aluminum caps. Crank retainers listed under “Accessories” are used to store the crank arm.

Note that for valid warranty to apply, any existing cab wiring must have been purchased from Shur-Co®.

## FEATURES AND OPTIONS

|  |          |
|--|----------|
| <b>RETURNS</b>   |          |
| 4-Spiral Torsion Springs per Arm                               | Standard |
| Shur-Strap™ – Standard w/Single-Arm Kits w/Fabric Caps         |          |
| HD Rear Cable Return – Standard w/Single-Arm Kits w/Alum. Caps |          |
| Heavy-Duty Shur-Return™  | N/C      |
| Shock Cord Roll Return   | N/C      |
| <b>MOUNTING BRACKETS</b>                                       |          |
| Heavy-Duty Aluminum Brackets                                   | Standard |
| Rear Knife-Gate Beam Bracket – Standard w/Knife-Gate Trailers  |          |
| <b>TORSION ARMS</b>  |          |
| Heavy-Duty Aluminum Arms                                       | Standard |
| <b>WIRING</b>  |          |
| Cab Wiring Kit (6 Ga.) – Standard w/30' Wire/Electric Hardware |          |
| Trailer Wiring Kit (6 Ga.) – Standard w/SMARTwire™             |          |
| Cab Wiring Kit (6 Ga.) – Cab Wiring Only                       | –        |
| <b>SPLINE CAPABILITY</b>                                       |          |
| Gate Flex™ – Standard w/Double-Arm Kits                        |          |
| Exposed Spline – Standard w/Single-Arm Kits w/Shur-Strap™      |          |
| Manual Override Kit – For Kits w/Over 2" Hinge Depth           | +        |
| <b>ELECTRICS</b>   |          |
| Rocker Switch  |          |
| SMART3™  |          |
| SMART2™  |          |
| <b>ACCESSORIES</b>   |          |
| Easy-Off Tarp Stop - 6" Offset                                 | +        |
| Additional 25' (4 Ga.) SMARTwire™ – For 100' Total             | +        |
| Extra SMART3™ Remote   | +        |
| SMARTwire™ 2-Light Kit w/o Remote - SMART3™                    | +        |
| SMARTwire™ 2-Light Kit w/o Remote - SMART2™                    | +        |

The easy-off tarp stops listed under “Accessories” are needed for top-hinge and side-hinge kits. Also, if aluminum cap is installed on trailer, rear cap must be at least 20-1/4" deep for system to work.

Single-arm kits include Shur-Strap™ or heavy-duty cable return for rear of trailer. Choosing a heavy-duty Shur-Return™ or shock cord return will NOT permit manual override.

Note that for valid warranty to apply, any existing cab wiring must have been purchased from Shur-Co®.

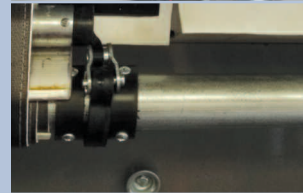
In the chart at left, features that come standard for End Dumps and Live Bottoms are indicated, but you can also see what options are available for these applications in each category.

The plus sign (+) indicates that it would be an additional cost, a minus sign (–) lets you know it would cost less than standard and N/C indicates no difference in price.

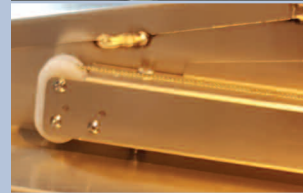
4-SPIRAL TORSION SPRING



SHUR-STRAP™ RETURN



HEAVY-DUTY REAR CABLE RETURN



HEAVY-DUTY ALUMINUM BRACKET



REAR KNIFE-GATE BEAM BRACKET



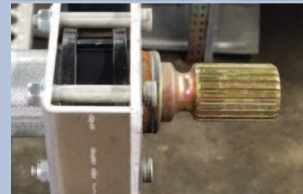
HEAVY-DUTY ALUMINUM ARM



GATE FLEX™



EXPOSED SPLINE



## FAST, EASY WAY TO PROTECT THE HARVEST

10



### 4500 SERIES HD FOR GRAIN CARTS



The 4500 Series HD works as an application for existing Shur-Loks on grain carts. Reliable motor with all-metal casing and patented dual-pivoting motor mount operate heavy-duty aluminum arms – the strongest on the market, with a lifetime guarantee against breakage.

Super-strong tension arm opens and closes the tarp with smooth, consistent tension. Our exclusive dual-pivoting Durabuilt™ motor mount allows for any misalignment of the roll tube without stress to motor or arm. Arm is easily moved by 4-spiral torsion springs, and heavy-duty front cable return is included with single-arm series.

**Key Features:** 4-Spiral Torsion Springs, Heavy-Duty Front Cable Return, Heavy-Duty Aluminum Bracket, Heavy-Duty Aluminum Torsion Arm, Tractor Cab Wiring Kit for Standard Electric Hardware or Trailer Wiring Kit for SMARTwire™ Systems, 90° Worm Gear Durabuilt™ Motor, SMART3™ Remote.



## FEATURES AND OPTIONS

|  |          |
|--|----------|
| <b>RETURNS</b>   |          |
| 4-Spiral Torsion Springs   | Standard |
| Heavy-Duty Front Cable Return  | Standard |
| <b>MOUNTING BRACKETS</b>   |          |
| Heavy-Duty Aluminum Bracket  | Standard |
| <b>TORSION ARMS</b>  |          |
| Heavy-Duty Aluminum Arm  | Standard |
| <b>WIRING</b>  |          |
| Tractor Cab Wiring Kit (6 Ga.) – Standard w/30' Wire/Electric Hardware |          |
| Trailer Wiring Kit (6 Ga.) – Standard w/SMARTwire™                     |          |
| <b>MOTORS</b>  |          |
| 90° Worm Gear Motor – For Carts Up to 28' Long                         | Standard |
| HD Parallel Shaft Motor – For Carts Over 28'                           | +        |
| <b>REMOTE</b>  |          |
| SMART3™  | Standard |
| <b>ACCESSORIES</b>   |          |
| Crank Retainers - PN1121864 (2)  | +        |
| Extra SMART3™ Remote   | +        |
| SMARTwire™ 2-Light Kit w/o Remote - SMART3™                            | +        |

In the chart at left, features that come standard are indicated, but you can also see what options are available for this application in each category.

The plus sign (+) indicates that it would be an additional cost, a minus sign (–) lets you know it would cost less than standard and N/C indicates no difference in price.

4-SPIRAL TORSION SPRING



HEAVY-DUTY FRONT CABLE RETURN



HEAVY-DUTY ALUMINUM BRACKET



HEAVY-DUTY ALUMINUM ARM



PATENTED SMARTWIRE™



90° WORM GEAR MOTOR



CRANK RETAINERS



SMART3™ REMOTE



KEEPS MATERIALS CONTAINED



## 4500 HD FOR OTVS, CHIP AND REFUSE TRAILERS



The 4500 Series HD is easy to install, accommodating sloped or vertical trailers and boxes. Its powerful American-made motor and super-strong extruded aluminum arms withstand the rigors of loading and unloading heavy bulk materials like scrap, recyclables and waste.

When you haul heavy-bulk materials like wood chips, scrap, recyclables or refuse, preventing load loss with a Shur-Lok® or PBR tarping system only makes sense, and a 4500 Series HD makes tarping convenient as well as practical. Experience the security of tarping without having to climb on the trailer.

Single arm returns should be chosen according to trailer configuration: select a heavy-duty cable return for aluminum caps and our Shur-Strap™ return for flat caps.

**Key Features:** 4-Spiral Torsion Springs per Arm, Shur-Strap™ w/Single-Arm Series, Heavy-Duty Aluminum Brackets, Heavy-Duty Aluminum Torsion Arms, Cab Wiring Kit for Standard Electric Hardware or Trailer Wiring Kit for SMARTwire™ Systems, Gate Flex™ w/Dual-Arm Kits, Exposed Spline w/Single-Arm Kits w/Shur-Strap™.

NOTE: 3" roll tube recommended for refuse and chip applications, for less deflection.



## FEATURES AND OPTIONS

|  |          |
|--|----------|
| <b>RETURNS</b>   |          |
| 4 Spiral Torsion Springs per Arm                               | Standard |
| Shur-Strap™ - Standard w/Single Arms                           |          |
| Heavy-Duty Shur-Return™  | N/C      |
| Heavy-Duty Cable Return  | N/C      |
| Shock Cord Return  | N/C      |
| <b>MOUNTING BRACKETS</b>                                       |          |
| Heavy-Duty Aluminum Brackets                                   | Standard |
| <b>TORSION ARMS</b>  |          |
| Heavy-Duty Aluminum Arms                                       | Standard |
| <b>WIRING</b>  |          |
| Cab Wiring Kit (6 Ga.) - Standard w/30' Wire/Electric Hardware |          |
| Trailer Wiring Kit (6 Ga.) - Standard w/SMARTwire™             |          |
| Cab Wiring Kit (6 Ga.) - Cab Wiring Only                       | -        |
| <b>SPLINE CAPABILITY</b>                                       |          |
| Gate Flex™ - Standard w/Double-Arm Kits                        |          |
| Exposed Spline - Standard w/Single-Arm Kits w/Shur-Strap™      |          |
| Manual Override Kit - For Kits w/Over 2" Hinge Depth           | +        |
| <b>ELECTRICS</b>   |          |
| Rocker Switch  |          |
| SMART3™  |          |
| SMART2™  |          |
| <b>ACCESSORIES</b>   |          |
| Extra SMART3™ Remote   | +        |
| SMARTwire™ 2-Light Kit w/o Remote - SMART3™                    | +        |
| SMARTwire™ 2-Light Kit w/o Remote - SMART2™                    | +        |

Note that for valid warranty to apply, any existing cab wiring must have been purchased from Shur-Co®.

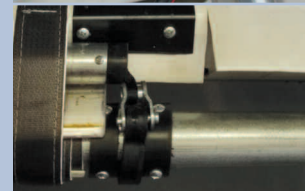
In the chart at left, features that come standard are indicated, but you can also see what options are available for this application in each category.

The plus sign (+) indicates that it would be an additional cost, a minus sign (-) lets you know it would cost less than standard and N/C indicates no difference in price.

4-SPIRAL TORSION SPRING



SHUR-STRAP™ RETURN



HEAVY-DUTY REAR CABLE RETURN



3-INCH ROLL TUBE



HEAVY-DUTY ALUMINUM ARMS



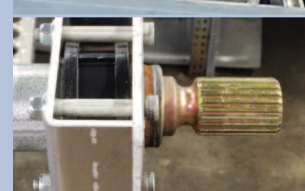
PATENTED SMARTWIRE™



GATE FLEX™



EXPOSED SPLINE



KEEPS CROPS DRY AND PROFITS HIGH

14



## TATER-TOP™ FOR POTATO TRAILERS



**“Loaded” with features, but without any hydraulics to weigh it down! Rolls and climbs to clear heaped potato loads – no bows needed. Hinged rear pivot arm swings all the way around the back to not obstruct rear doors and secures with locking brace. Fixed arm also available.**

Tarp snugs up under the latchplate (a design originally patented on *The Original Shur-Lok®*) and a bungee in the tarp closes it tightly, with no overhang. A mini “Poor Boy” tail replaces the face panel. Powerful worm gear motor makes for improved clearance. 30-foot box limit.

**Key Features:** Worm Gear Motor, Universal Mounting Bracket, Heavy-Duty Steel Arms, Hinged Swing Pivot Arm w/Locking Rear Brace or Fixed Arm, Aluminum Latchplate, Mini “Poor Boy” Tail, SMART3™ Remote Compatible.

NOTE: If trailer is NOT already equipped with a Shur-Lok® tarp system, appropriate 3" roll tube Shur-Lok® kits available.



## FEATURES AND OPTIONS

|   |          |
|---|----------|
| <b>MOTOR</b>                                  |          |
| Worm Gear Motor                               | Standard |
| <b>RETURNS</b>                                |          |
| 6-Spiral Torsion Spring per Arm               | Standard |
| <b>MOUNTING BRACKETS</b>                      |          |
| Heavy-Duty Steel Brackets                     | Standard |
| <b>TORSION ARMS</b>                           |          |
| Heavy-Duty Steel Arms                         | Standard |
| Hinged Swing Pivot Arm w/Locking Rear Brace   | +        |
| Fixed Arm                                     | -        |
| <b>LATCHPLATE</b>                             |          |
| Aluminum Latchplate                           | Standard |
| <b>END CAPS</b>                               |          |
| Mini "Poor Boy" Tail                          | Standard |
| <b>ELECTRICS</b>                              |          |
| Rocker Switch                                 |          |
| SMART3™                                       |          |
| SMART2™                                       |          |
| <b>TARP OPTIONS</b>                           |          |
| Multicolored Fabric (per added color)         | +        |
| <b>ACCESSORIES</b>                            |          |
| Extra SMART3™ Remote                          | +        |
| SMARTwire™ 2-Light Kit w/o Remote - SMART3™   | +        |
| Installation Kit - Includes 3 Bows/3 Brackets | +        |
| Standard Tarp Repair Kit                      | +        |

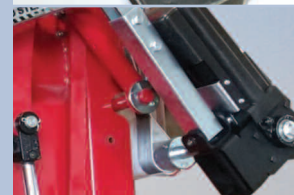
In the chart at left, features that come standard are indicated, but you can also see what options are available for this application in each category.

The plus sign (+) indicates that it would be an additional cost, a minus sign (-) lets you know it would cost less than standard and N/C indicates no difference in price.

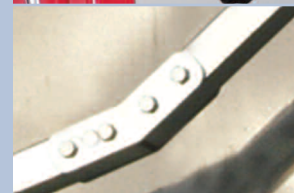
SMART CAPABILITIES



WORM-GEAR MOTOR



HEAVY-DUTY STEEL ARMS



UNIVERSAL MOUNTING BRACKET



HINGED SWING PIVOT ARM



LOCKING REAR BRACE



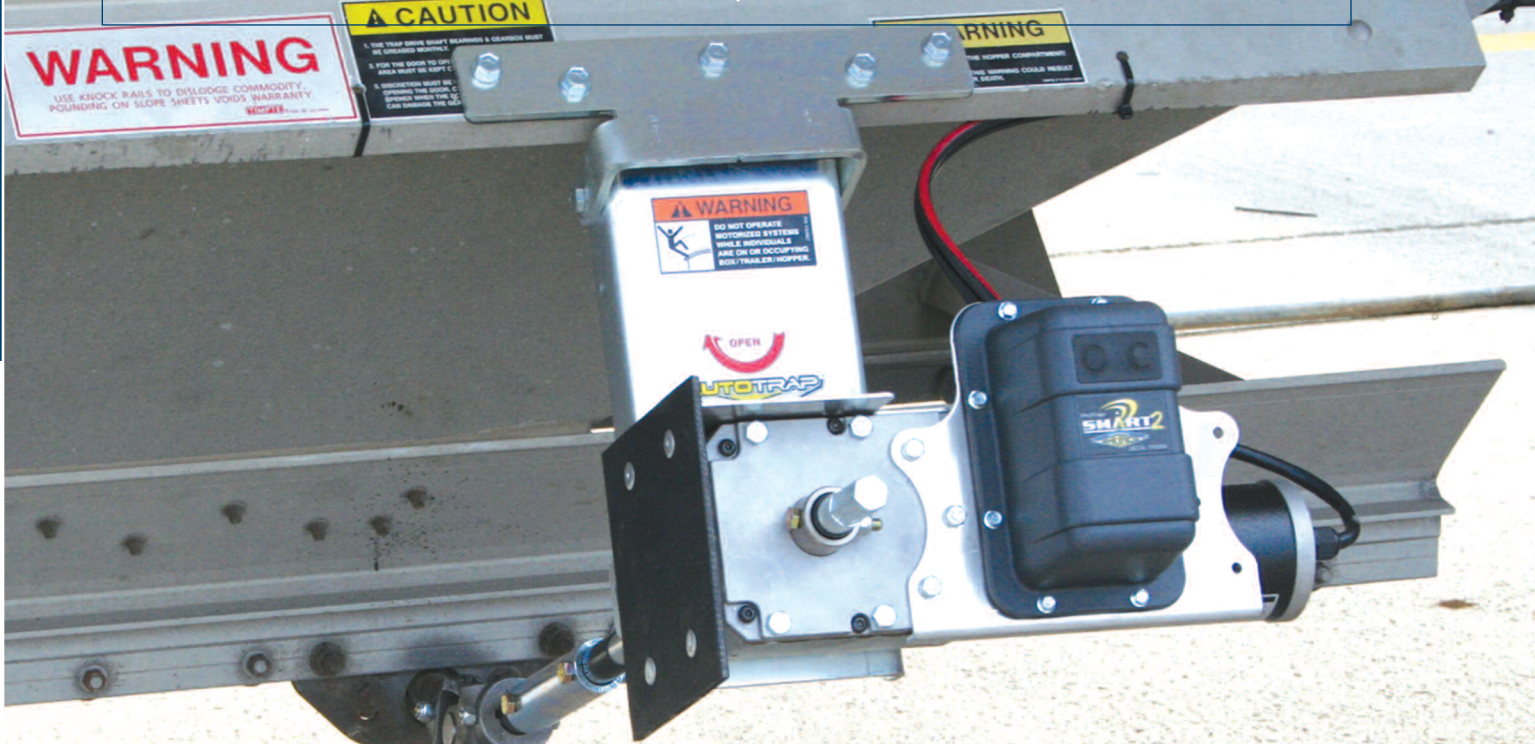
ALUMINUM LATCHPLATE



MINI "POOR BOY" TAIL



MORE COMPACT SIZE, HIGHER CLEARANCE



16

## AUTOTRAP™ ELECTRIC HOPPER OPENER



AutoTrap™ combines the best elements of Shur-Co® SMARTrailer™ design! You get a compact, high-clearance system at an affordable price, with patented SMARTwire™ connections and built-in compatibility with our SMART3™ and SMART2™ remotes.

The thru-bore motor design of the AutoTrap™ has performance characteristics comparable to our ProTrap® system but in a more compact size and weight – nearly 40 percent lighter! Its design also allows for easy one-bolt conversion to manual operation, if necessary. The protective polymer sleeve acts as an effective corrosion barrier between drive shaft and motor.

This system is “one-size-fits-all,” to interface with 1-inch, 7/8-inch or 3/4-inch crank shafts. Wireless operation via our pre-programmed SMART2™ remote is standard, and push-button controls at each opener are also included. Available in 1-hopper, 2-hopper, 3-hopper and 4-hopper stand-alone configurations or in combination with 4500 Series HD electric tarps.

**Key Features:** Thru-Bore Motor, Thru-Bore Drive Shaft w/3/4" Hex Milled End, Polymer Motor Sleeve, Universal Mounting Bracket, Hinge Bracket w/Shim Insulator, Integrated Rock Shield, Crank Shaft Adapter Kit, 1-Bolt Manual Changeover, Emergency Back-Up Crank, SMARTwire™ Sealed Harness, SMART2™ or SMART3™ Remote.



UNLOADS FASTER, EASIER AND SAFER

17

## PROTRAP® ELECTRIC HOPPER OPENER

The best one-two punch in trailer automation! Pair your 4500 Series HD electric tarp with the ProTrap® electric hopper opener. It safely and smoothly slides hopper doors open and closed at the touch of a button while you stay back, safely out of the dust.

The ProTrap's all-metal gears and housing are designed to handle the hard stops, with a high-efficiency planetary gear reduction and a breaker circuit at the battery to protect the motor. It eliminates the need for unreliable limit switches that can be damaged going through fields.

Actual torque varies based on wire size, length and battery voltage; our motors are sized to best protect your trailer components. The 150 low-torque motor is standard for trailers with strap-style traps, the 250 motor for rack-and-pinion traps.

Our SMART2™ and SMART3™ remotes deactivate when the flip-style covers are closed or shut off after three minutes of inactivity. Everything is clearly labeled. The cab-mounted or trailer-mounted master disconnect switch kills power to the tarp and traps – no complicated button sequence required. Patented sealed, quick-connect SMARTwire™ harness reduces connector corrosion and adds plug-and-play convenience at install.

**Key Features:** All-Metal Gear Motor, Automatic Brake (Holds Door), Universal Mounting Bracket, Hinge Bracket w/Shim Insulator, 1-Bolt Manual Changeover, Master Disconnect Switch, SMARTwire™ Sealed Harness, SMART2™ or SMART3™ Remote.

NOTE: ProTrap® comes preassembled for faster install.



EASILY SWINGS YOUR AUGER INTO POSITION

18



## DRIVEMAXX™ ELECTRIC AUGER DRIVE KIT



The final component to Shur-Co's complete "system solution" for remote operation at harvest time! Quickly swings your auger hopper into position from the comfort of the cab. Comes with its own LiteALL™ work light kit and plug-and-play SMARTwire™ connections.

Independent 2-wheel dual-motor drive is powered by 220 lb.ft. of torque per motor. Direct-drive motors are designed with right-angle rear drives and no chains or chain tensioners. Built rugged and dependable, with an aggressive tire tread. Sealed SMARTwire™ connections and receiver box, plus completely enclosed gear boxes, provide watertight reliability.

Included push-button LiteALL™ LED flood light can be upgraded to a SMART2™ or SMART3™ LiteALL™ for remote control. An open light channel lets you add a second LiteALL™ to illuminate auger discharge or for placement on the main auger tube to light the work area.

**Key Features:** SMART Remote Compatibility, Independent 2-Wheel Dual-Motor Drive Kit, SMARTwire™ Connections, Sealed Receiver Box, Manual LiteALL™ LED Work Light Kit, SMART3™ Remote.



## REMOTELY CONTROLS HOISTS AND SLIDE GATES

19



### ELECTRIC GATE AND HOIST SYSTEM

Control box hoist and rear slide gates on farm bodies with our SMART2™ or SMART3™ remote. So versatile, it lets you add an electric tarp and traps, work lights – even a swing auger drive kit – and run it all with the same remote. It's fast, easy, and most of all, safe!

With the introduction of Shur-Co's SMART mini-modules, you have the ability to control any 12-volt accessory on your truck or trailer. The combination of the mini-module and an electric actuator gives you full control over the rear slide gate. A second mini-module with our electric-over-air solenoid valve gives you control of your hoist. No more climbing up and down bins to adjust flow from the truck into your auger.

All wiring connections utilize environmentally sealed WeatherPack™ connectors on the hoist controls and D.O.T.-certified air fittings. If ordered with an electric tarp, includes patented SMARTwire™ package for easy install.

**Key Features:** SMART2™ or SMART3™ Remote, 12-Volt Electric Shur-Co® Motor, Sealed Receiver Box, SMARTwire™ Mounting Brackets, D.O.T.-Certified Air Fittings.



GATES ARE OPENED AND SHUT FOR YOU

20



## AUTOGATE™ GATE RUNNER

No need to get out of your tractor or truck when going through gates – this does the work for you, safely and easily. Use your SMART3™ remote to fully open and close gates up to 18 feet wide with one quick press of a button – opens or shuts completely in 10 to 15 seconds.

Safety feature provides automatic shut-off if gate is obstructed. Installation is easy, and solar panel is included for convenient battery charging. Travel limits up to 100 degrees are configurable via Shur-Co's SMART3™ app.\*

\*Android phones ONLY.

**Key Features:** Linear Actuator, SMART Remote Compatibility, Maintenance-Free 12V Battery, Control Box, Solar Panel, Complete Mounting Bracketry.

## ALSO - Power Your Tarp Without Wiring Your Truck!

Harness the power of the sun for your electrics! Solar pack converts the sun's energy into battery-charging power. It's rated for over 5,000 cycles. Installs vertically or horizontally.

**Key Features:** 30-Watt Solar Panel, Sealed 12-Volt Gel Cell Battery, Aluminum Battery Box, Mounting Hardware.



## OPEN LOADING AT THE TOUCH OF A BUTTON

21



### ELECTRIC TURNING POINT™ BOW SYSTEM

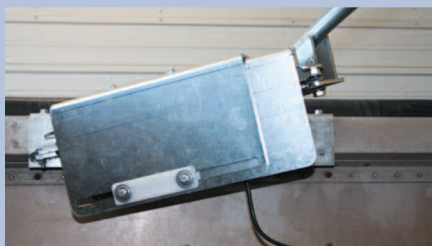
Bows move as one, swinging up and out of the way for wide-open loading. The operator can remain safely in the cab while operating the system with a rocker switch or our SMART2™ or SMART3™ remote. The center pivoting ridgepole holds the tarp without sagging.

With the Electric Turning Point™ Bow system, you need fewer bows – and those you do need open simultaneously for easier loading. Our exclusive locking system provides secure support during transport and serves as a skid plate when the bows swing closed.

The electronic actuator is designed for longer life in the harshest outdoor conditions, operating safely in temperatures ranging from -86 to 140 degrees Fahrenheit. Integrated brakes lock out movement, a slip clutch automatically protects the actuator from overload and a cut-off switch prevents operation unless the roll tarp is completely open.

NOTE: When using SMART remotes, there is no positional feedback and Express Mode is not available. However, it will work with other SMART applications.

**Key Features:** Electric Cut-Off Switch, Automatic Overload Slip Clutch, Locking Skid Plate, Bow Actuator, Actuator Brakes, Easy Electric-to-Manual Conversion.



OPENS MANUAL TRAPS QUICKLY AND EASILY

22



## TRAPADAPT™ MANUAL TRAP OPERATOR

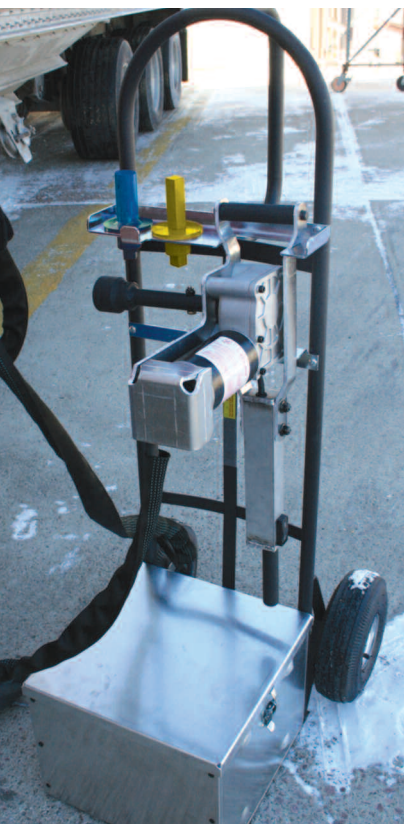
Does the work of an electric hopper opener for you, saving time and helping elevator staff be more efficient. Time equals money, and this aluminum-handled kit speeds things up. Handle has a forward-and-reverse switch built right in and weighs just 21 pounds for easy lifting.

Main socket is designed to fit most popular-brand hoppers on the market. Durabuilt™ worm-gear motor has a 90:1 gear ratio and 3/4-inch motor shaft. Vented aluminum battery box is equipped with an on/off switch, motor-reversing solenoid, 8-amp charger, manual override breaker and battery\* hold-down.

Handle, motor and battery box all come attached to an included 2-wheel cart and weigh less than 70 pounds without a battery. Also available is an optional 5-inch LED light.

**Key Features:** Aluminum Handle w/Forward-and-Reverse Switch, Worm Gear Durabuilt™ Motor, Vented Aluminum Battery Box w/On and Off Switch, 2-Wheel Cart.

\*Battery is NOT furnished; Group 27 or 31 Deep-Cycle Marine Battery recommended for best results.



# DIRECTS LIGHT WHERE YOU NEED IT MOST



23

## LITEALL™ LED WORK LIGHT PACKAGES

It's the perfect combination of affordability, durability and functionality! Complete 12-volt system is designed to use with our SMART2™ and SMART3™ remotes, letting you work into the night when you need to with high-intensity flood beams on adjustable hinged brackets.

LiteALL's work lights are set into hinged mounting brackets that swivel forward and back, and an available 20-foot extension cable provides even more adaptability. Features built-in flexibility for manual operation using trailer-mounted control module. Specifications: IP67 waterproof rating, 1600 lumens, 24-watt output, 1.8-amp draw and 30,000 hours estimated life.

LiteALL™ features SMART compatibility with the SMART2™ – with digital feedback – or the 5-channel SMART3™ remote. Deactivates when lid is closed or after 3 minutes of inactivity. Control modules include 2 output channels with WeatherPack™ connectors. Select a complete 2-light kit or individual components to fit your needs (see next page).

**Key Features:** Swivel-Bracket Lights, Control Module, Complete Mounting Hardware.

NOTE: Does NOT include SMART Remote, Extension Cable or SMARTwire™ Adapter.



## COMPONENTS FOR LEGACY SMART1+™ SYSTEMS



Available for a limited time. Control modules fit Legacy systems to allow continued operation.

P/N 1121563 – SMART1+™ Control Module w/ Legacy Trailer Connectors

P/N 1125725 – SMART1+™ Control Module w/ WeatherPack Connectors





#### P/N 1122108 – SMART2™ Remote

Controls SMART2™ LiteALL™ and 12V electric accessories, with digital feedback. Deactivates when cover is closed or after 3 minutes of inactivity. Includes remote, cradle (P/N 1704955) and charging cable (P/N 1704958).

#### P/N 1127810 – SMART2™ Control Module\* (see on pg. 23)

Includes 2 output channels with WeatherPack™ connectors. Provides on/off status to SMART2™ remote. WeatherPack™ connector on 8-foot cable must be wired to 12V DC. Utilize SMARTwire™ adapter (P/N 1122690) to connect 8-foot power cable to patented SMARTwire™ plug-and-play connections. Voltage: 10-16V DC. Current: 8A max per output.

\*Also available with output adapter cables with 2-way molded bullet connectors for plug-and-play connection to Legacy LiteALL™ kit (P/N 1127809).

#### P/N 1126867 – SMART3™ Remote

Controls SMART3™ LiteALL™ and additional SMARTrailer™ accessories. Deactivates when lid is closed or after 3 minutes of inactivity. Uses two AAA batteries.

#### P/N 1127598 – SMART3™ Control Module\*\* (see on pg. 23)

Control module has 2 output channels. Both output cables and 8-foot power cord have WeatherPack™ connectors. Utilize SMARTwire™ adapter (P/N 1122690) to connect power cable to patented SMARTwire™ plug-and-play connectors. Voltage: 10-16V DC. Current: 8A max per output.

\*\*Also available with output adapter cables with 2-way molded bullet connectors for plug-and-play connection to Legacy LiteALL™ kit (P/N 1127597).



#### P/N 1120849 - Junction Block Kit w/Harness Plug

Connects to 12V power on pre-existing systems installed on 4500 HD/ProTrap® combos. Unplug SMARTwire™ dual-conductor socket from 4500 receiver box, insert SMARTwire™ junction block. LiteALL™ will then draw power from block using SMARTwire™ adapter wire (P/N 1122690).

#### P/N 1119520 - Junction Box

Connects to 12V power on existing 3500s, non-SMARTwire™ 4500s or other non-SMARTwire™ systems (already installed on most 3500/ProTrap® combos). Includes 3-foot 6-ga. wire and 6-ga. x 1/4-inch ring terminals (4) into a 3-light system (splitter lets you add an additional light).



SUGGESTED  
YOU BUY  
ONE KIT  
FOR EACH  
LIGHT

#### P/N 1122706 – LiteALL™ LED Work Light\*\*\*

High-intensity LED flood beam in hinged bracket, 13-foot power cord with WeatherPack™ connectors. Output: 1600 lumens. Power: 24 watts. Estimated life: 30,000 hours.

\*\*\*Also available w/molded 2-way bullet connector (P/N 1704719).

#### P/N 1120672 – Mounting Hardware Kit

Includes rubber grommet insert and rubber grommet, plus nylon wire clips (6) and self-drilling screws (6).



#### P/N 1126433 – 10-Ft. Cable w/WeatherPack™ Connectors

Provides additional flexibility in mounting location of control module. Also available in 20-foot length (P/N 1122742).

#### P/N 1122704 – 20-Ft. Cable for Output to LED Light\*\*\*\*

WeatherPack™ connectors, 2-way conductor, 18-ga. cable for additional positional flexibility and easy install of wiring.

\*\*\*\*Also available w/molded 2-way bullet connectors (P/N 1704740).



#### P/N 1120670 – SMARTwire™ Dual-Conductor Socket

Trailer socket connection for 12V power if none previously exists. Opposite end of 3-foot conductor socket wire is plug-and-play compatible with SMARTwire™ junction blocks.

#### P/N 1122705 – LiteALL™ Output Splitter\*\*\*\*\*

Powers 2 lights from 1 channel. WeatherPack™ connectors form a sealed connection. Each splitter lets you add a light.

\*\*\*\*\*Also available w/molded 2-way bullet connectors (P/N 1704773).



#### P/N 1127599 – Output Adapter Cable

Lets WeatherPack™ connectors on module output connect to Legacy LiteALL™ with molded 2-way bullet connectors.

#### P/N 1122690 – SMARTwire™ Adapter\*\*\*\*\*

Easy install into SMARTwire™ systems. WeatherPack™ connectors eliminate splicing into existing truck/trailer wiring.

\*\*\*\*\*Also available w/Legacy round 2-way connector (P/N 1121568).

# SMARTTRAILER™ ORDER FORM

For 4500 Series HD Grain Trailers/AutoTrap™/ProTrap®

## TRAILER MAKE

- |                                    |                                     |   |
|------------------------------------|-------------------------------------|---|
| <input type="checkbox"/> Wilson    | <input type="checkbox"/> Cornhusker | <input type="checkbox"/> Timp* <sup>*</sup> |
| <input type="checkbox"/> Neville   | <input type="checkbox"/> Western    | <input type="checkbox"/> Merritt            |
| <input type="checkbox"/> Dakota*   | <input type="checkbox"/> Wheeler    | <input type="checkbox"/> Jet Co.            |
| <input type="checkbox"/> Hart Mfg. | <input type="checkbox"/> Maurer     | <input type="checkbox"/> Stoughton          |
| <input type="checkbox"/> Other     |                                     |   |

NOTE: Backer plates INCLUDED in kits.

\*Special bracketry may be required for traps.

TRAILER MODEL \_\_\_\_\_

YEAR \_\_\_\_\_

Use the boxes at left to provide needed information about your trailer. Then fill out boxes in the categories below if you are planning to order a 4500 Series HD electric tarp and/or AutoTrap™ or ProTrap® hopper openers for your grain trailer. The last section illustrates what to look for when ordering electric systems for leads, pups and B trains. By checking correct categories for your particular system, you will have a better understanding of exactly what you should order.

## For 4500 Series HD Grain Trailers

### FRONT OF TRAILER

- ☐ Vertical ☐ Sloped

### ROLL DIRECTION OF TARP

- ☐ Standard ☐ Reverse Roll

### REAR DOOR STYLE

- ☐ Standard ☐ Top Hinge ☐ Side Hinge

Depth: Ladder \_\_\_\_\_ Catwalk \_\_\_\_\_

### LADDER POSITION

- ☐ Driver Side ☐ Passenger Side  
☐ Center ☐ Off-Center Driver/Pass.

Rib/Rivet Spacing \_\_\_\_\_

### ELECTRIC CONTROLS OPTION

- ☐ Rocker Switch\*

\*For 4500 Series HD alone, no AutoTrap™/ProTrap® combos.

- ☐ SMART2™ Wireless Remote

- ☐ SMART3™ Wireless Remote

The following **MUST** be ordered separately.

### CRANK RETAINERS - Qty 2

(Used to store the crank under the king pin.)

- ☐ Yes ☐ No

### U-CLAMPS & SCREWS

Existing Shur-Loks will need new U-clamps/ screws to reattach tarp to roll tube.

- ☐ U-Clamps ☐ Screws

## For AutoTrap™/ProTrap®

Currently have a 4500 Series HD with a rocker switch?

Want to convert to Wireless? ☐ Yes ☐ No

### MOTOR INSTALL LOCATION

- ☐ U.S. Driver ☐ U.S. Curb Side\*

\*Utilizes United States driver-side controls.

### STYLE

- ☐ Rack & Pinion ☐ Strap-Trap

### SHAFT DIAMETER

- ☐ 1" ☐ 7/8" ☐ 3/4" ☐ Other

### KNOCK RAIL

- ☐ Yes ☐ No

### FRONT HOPPER

- ☐ Direct Drive - Clockwise\*\*

- ☐ Direct Drive - Counterclockwise\*\*

### BACK HOPPER

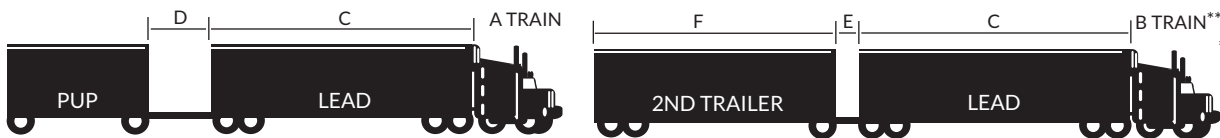
- ☐ Direct Drive - Clockwise\*\*

- ☐ Direct Drive - Counterclockwise\*\*

\*\*Direction is from view of where motor will be mounted.

## For Pup Trailers (Electric Available in Wireless ONLY)

NOTE: MUST go through special quote and SOP to get pricing, plus lead wire kit and coiled wire plug will be added to price.



\*\*Second trailer can be pulled independently by a tractor.

Shaft Diameter \_\_\_\_\_

D \_\_\_\_\_ Tongue Length on Pup (A TRAIN)

SOLAR ☐ Yes ☐ No

LEAD/PUP TRAINS (Refer to illustration.)

E \_\_\_\_\_ Distance From Lead to Trailer (B TRAIN)

Pull/Pup ☐ Yes ☐ No

C \_\_\_\_\_ Lead Train Length

F \_\_\_\_\_ Pull/Pup Train Length

Lead ☐ Yes ☐ No

# SMARTTRAILER™ ORDER FORM For 4500 Series HD End Dumps/Live-Bottom Trailers

## TRAILER MAKE

- |                                    |                                     |                                    |
|------------------------------------|-------------------------------------|------------------------------------|
| <input type="checkbox"/> Wilson    | <input type="checkbox"/> Cornhusker | <input type="checkbox"/> Timp**    |
| <input type="checkbox"/> Neville*  | <input type="checkbox"/> Western*   | <input type="checkbox"/> Merritt*  |
| <input type="checkbox"/> Dakota**  | <input type="checkbox"/> Wheeler*   | <input type="checkbox"/> Jet Co.*  |
| <input type="checkbox"/> Hart Mfg. | <input type="checkbox"/> Maurer     | <input type="checkbox"/> Stoughton |
| <input type="checkbox"/> Other     |                                     |                                    |

NOTE: Backer plates INCLUDED in kits.

\*Special bracketry may be required for traps.

Use the boxes at left to provide needed information about your trailer. Use those below to designate needed information for more specific types of trailer: end dump or live bottom. By checking correct categories for your particular system, you will have a better understanding of exactly what you should order.

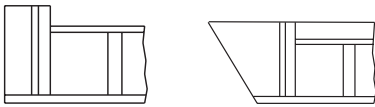
TRAILER MODEL \_\_\_\_\_

YEAR \_\_\_\_\_

## For 4500 Series HD End Dumps

### FRONT OF TRAILER

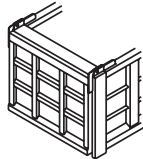
- ☐ Vertical ☐ Sloped



### REAR DOOR STYLE

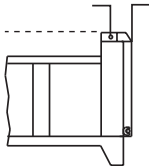
- ☐ Top Hinge\*

\*Must be level with or below the top rail.



### REAR HINGE DEPTH

- ☐ 0-10"  
☐ 11-17"



### MANUAL OVERRIDE KIT\*\*

- ☐ Yes ☐ No

\*\*Recommended for hinge depth greater than 2".

### QTY OF ELECTRICAL WIRE

- ☐ 75' ☐ 100'

### SWITCH OPTION

- ☐ Rocker Switch ☐ Wireless

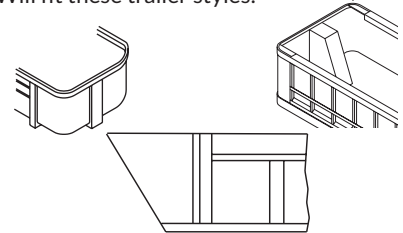
### REMOTE OPTION

- ☐ SMART2™ ☐ SMART3™

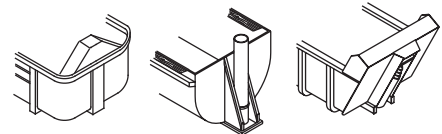
### ADDITIONAL ITEMS TO ASK ABOUT

Are existing roll tubes in good shape?  
Need easy-off 6" offset tarp stops?  
Replacement U-clamps and screws?

### Will fit these trailer styles:



### These styles will need modification in order to operate properly:



## For 4500 Series HD Live Bottoms

### FRONT OF TRAILER

- ☐ Vertical ☐ Sloped

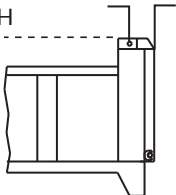


### REAR DOOR STYLE

- ☐ Top ☐ Side

### REAR HINGE DEPTH

- ☐ 0-10"  
☐ 11-17"



### MANUAL OVERRIDE KIT\*

- ☐ Yes ☐ No

\*Recommended if hinge depth is greater than 2".

RIB SPACING \_\_\_\_\_

CATWALK DEPTH \_\_\_\_\_

### LOCATION OF LADDER

- ☐ Driver Side ☐ Passenger Side  
☐ Center

### TRAILER MODEL

- ☐ 2006 or Newer ☐ Older

### BACK CAP CHOICE\*\*

- ☐ Aluminum ☐ Fabric Cap

\*\*Must be 20-1/4" deep.

### SWITCH OPTION

- ☐ Rocker Switch ☐ Wireless

### REMOTE OPTION

- ☐ SMART2™ ☐ SMART3™

### ADDITIONAL ITEMS TO ASK ABOUT

Are existing roll tubes in good shape?  
Need easy-off 6" offset tarp stops\*\*\*?  
Replacement U-clamps and screws?

\*\*\*Required for Top Hinge Rear Door kits.

### KNIFE GATE

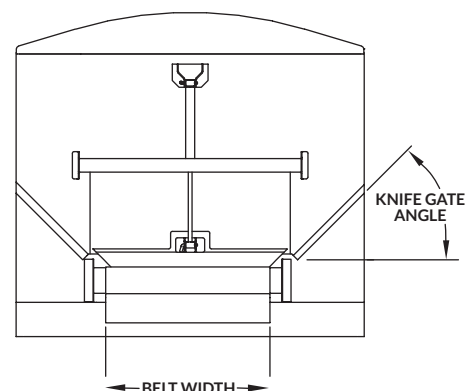
- ☐ Yes ☐ No

### ANGLE

- ☐ 45° ☐ 57°

### BELT WIDTH

- ☐ 36" ☐ 42" ☐ 48" ☐ 60"



# DRIVEMAXX™ ORDER FORM For Swing Augers

## CURRENT AUGER

☐ None ☐ Manual ☐ Electric\*

\*IF ELECTRIC TARPING SYSTEM, WHICH KIND:

☐ Rocker ☐ SMART2™ ☐ SMART3™

☐ Adding electric tarping system at same time as as ordering the DriveMaxx™ kit. Please enter P/N of tarping system here:

\_\_\_\_\_

AUGER MAKE \_\_\_\_\_

YEAR \_\_\_\_\_

A \_\_\_\_\_ TRANSITION BOX WIDTH (ACTUAL)

B TUBE DIAMETER

☐ 8" ☐ 10" ☐ 12" ☐ 13" ☐ 14" ☐ 16"

FLANGE ☐ Yes ☐ No

If yes, enter distance from edge of of flange to pre-existing mounting hole.

C \_\_\_\_\_

Current Remote: ☐ SMART1+™ ☐ SMART2™ ☐ SMART3™

NOTE: If S1+, you MUST upgrade to: ☐ SMART2™ OR ☐ SMART3™

NOTE: If S2, remote is NOT included. If S3, remote comes standard.

**Non-Remote Controlled (Push-Button) LiteALL™ comes standard.**

To Upgrade: ☐ SMART2™ LiteALL™ OR

☐ SMART3™ LiteALL™

Use the boxes in the categories at left to provide needed information. By checking correct categories for your particular auger, you will have a better understanding of exactly what you should order.

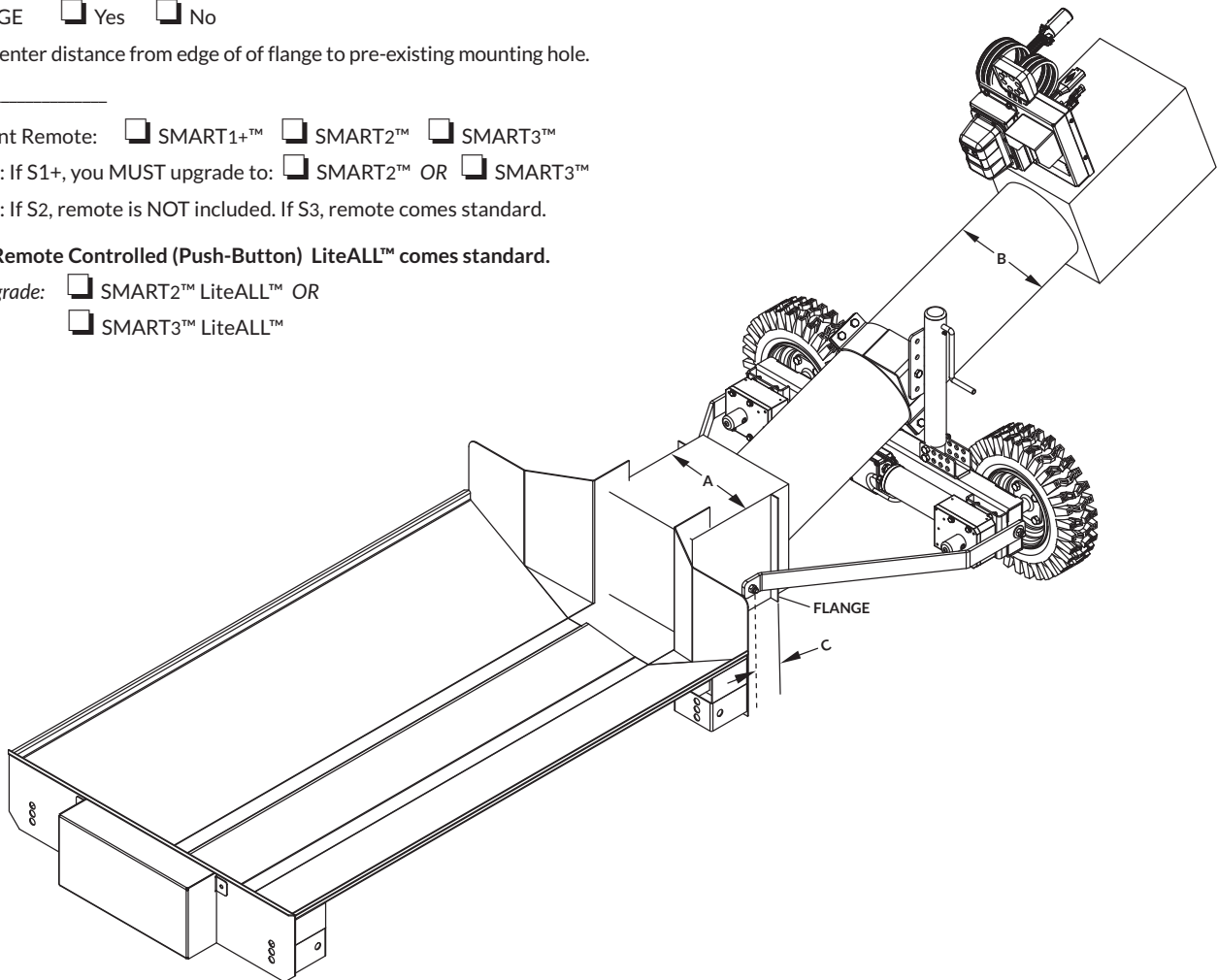


Shur-Co®  
Dealer Locator



Drive Maxx™  
Landing Page

Call your local dealer for more information or use the QR code at the far left for our Dealer Locator. Or use the QR code for Shur-Co's DriveMaxx™ for more product details on our website.



# GATE AND HOIST ORDER FORM For Farm Trucks

## CURRENT TARPING SYSTEM

☐ None ☐ Manual ☐ Electric\*

\*IF ELECTRIC TARPING SYSTEM, WHICH KIND:

☐ Rocker ☐ SMART<sub>2</sub><sup>™</sup> ☐ SMART<sub>3</sub><sup>™</sup>

☐ Adding electric tarping system at same time as ordering the Gate and Hoist system. Please enter P/N of tarping system here:

\_\_\_\_\_

BOX MAKE \_\_\_\_\_

YEAR \_\_\_\_\_

## BOX DIMENSIONS

A \_\_\_\_\_ Upper Box Length

B \_\_\_\_\_ Upper Box Width

N \_\_\_\_\_ Top Rail Width

U \_\_\_\_\_ Inside Box Width

X \_\_\_\_\_ Outside Box Height from Ground

## REMOTE TYPE

☐ SMART<sub>2</sub><sup>™</sup> ☐ SMART<sub>3</sub><sup>™</sup>

## HOIST TYPE

Air-Over Hydraulic

☐ Yes ☐ No - Electric Gate & Hoist N/A

Style \_\_\_\_\_

BOX STYLE *See illustrations at right and below*

☐ Type C ☐ Type D ☐ Type E

Other \_\_\_\_\_

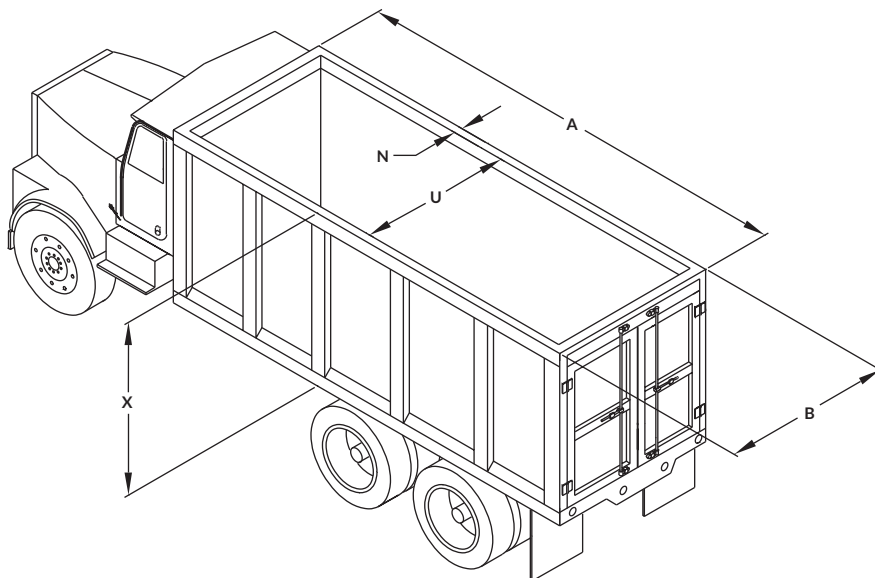
## GATE STYLE

☐ Flat ☐ Ribbed

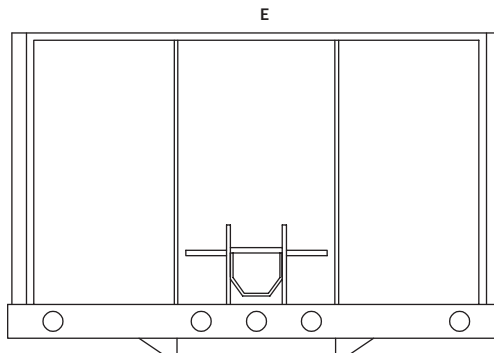
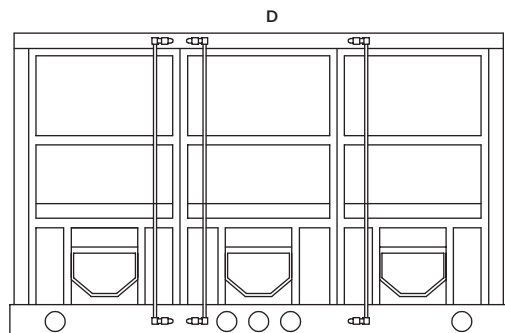
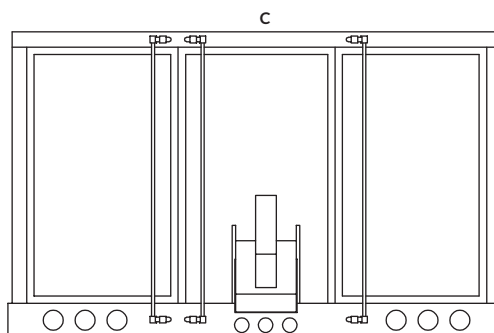
## MANUALLY CONTROLLED AIR SWITCH

☐ Yes ☐ No

Use the boxes in the categories below to designate needed information. By checking correct categories for your particular farm box, you will have a better understanding of exactly what you should order.



ONLY ONE (1) ACTUATOR PER KIT



Check out our Genuine Shur-Co® replacement parts, professionally engineered in compliance with the most stringent safety standards. All have excelled in rigorous field testing and are proven to fit and function better.

Shur-Co's strict quality and tolerance guidelines promote dependable product interchangeability. For example, even if a Shur-Lok® is 20 years old, new Shur-Lok® parts are guaranteed to fit. Remember that utilizing non-Genuine parts voids your warranty.

NOTE: All components other than standard may require non-refundable engineering/manufacturing fees. Call for details.

## REPLACEMENT PARTS INDEX

|                                  |    |
|----------------------------------|----|
| TARP REPAIR SUPPLIES.....        | 25 |
| SHUR-LOK® ELECTRIC.....          |    |
| Cab Wiring Kits.....             | 26 |
| Dual Conductors.....             | 26 |
| Front Arms.....                  | 27 |
| Front/Rear Returns.....          | 28 |
| Receiver/Remote Non Express..... | 29 |

## 4500 SERIES HD ELECTRIC

|                                   |       |
|-----------------------------------|-------|
| Cab Wiring Kits.....              | 30    |
| Dual Conductors.....              | 30    |
| Front Arm Assemblies.....         | 31-32 |
| Rear Arm Assemblies.....          | 32    |
| Rear Hinge Assemblies.....        | 33-34 |
| Rear Returns.....                 | 35    |
| Receiver/Remote Non Express.....  | 36    |
| Receiver/Remote Express Mode..... | 37    |
| Pivot Mount Brackets.....         | 38    |
| Trailer Wiring Kits.....          | 38    |

## AUTOTRAP™

|                                     |    |
|-------------------------------------|----|
| SMARTwire™ Hopper Door Openers..... | 39 |
|-------------------------------------|----|

## MAXXTRAP™

|                                     |    |
|-------------------------------------|----|
| Crank Arms/Crank Retainers.....     | 40 |
| SMARTwire™ Hopper Door Openers..... | 40 |

## PROTRAP®

|                                     |    |
|-------------------------------------|----|
| Rail Mount Assemblies.....          | 41 |
| SMARTwire™ Hopper Door Openers..... | 41 |

## AUTOTRAP™/MAXXTRAP™/PROTRAP®

|                            |    |
|----------------------------|----|
| Cab Wiring Kits.....       | 42 |
| SMARTwire™ Electrical..... | 43 |

## AUTOTRAP™/PROTRAP®

|                     |    |
|---------------------|----|
| Trailer Mounts..... | 43 |
|---------------------|----|

## ELECTRIC GATE AND HOIST.....

## ELECTRIC TURNING POINT™ BOW.....

## TARP REPAIR SUPPLIES

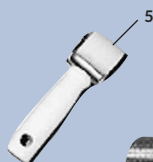
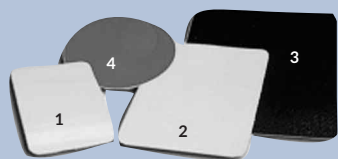
| ITEM | PART #  | DESCRIPTION                                    |
|------|---------|--|
|      | 1108059 | Professional Tarp Repair Kit                   |
|      | 1102111 | Standard Tarp Repair Kit                       |
|      | 1703251 | Handi Grommet Kit w/Grommets                   |
| 1    | 1111869 | 2" x 3" Patch w/Radius Corners                 |
| 2    | 1111870 | 3" x 4" Patch w/Radius Corners                 |
| 3    | 1111871 | 4" x 5" Patch w/Radius Corners                 |
| 4    | 1111872 | 3" Round Patch                                 |
| 5    | 1701391 | Wooden Roller                                  |
| 6    | 1107371 | Vinyl Tarp Remnant (specify color or may vary) |
| 7    | 1700697 | HH-66 Thinner - Pint                           |
| 8    | 1700602 | HH-66 Thinner - Gallon                         |
| 9    | 1700356 | HH-66 Vinyl Cement - 8 Oz.                     |
| 10   | 1700355 | HH-66 Vinyl Cement - Quart                     |
| 11   | 1700354 | HH-66 Vinyl Cement - Gallon                    |
| 12   | 1700673 | #3 Brass Grommet (minimum order 25)            |



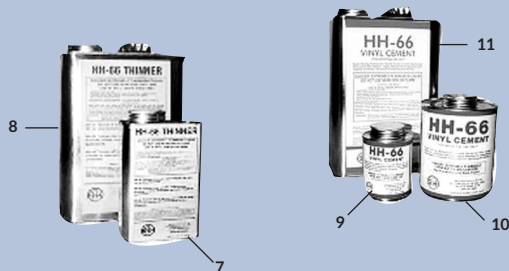
**PROFESSIONAL KIT**  
INCLUDES SCISSORS,  
10 SQ. FT. REPAIR FABRIC, ROLLER,  
HEAT GUN/NOZZLE  
AND INSTRUCTIONS



**STANDARD KIT**  
INCLUDES 1 PT. THINNER,  
1 QT. CEMENT, INSTRUCTIONS  
AND 10 SQ. FT. REPAIR FABRIC



**GROMMET KIT**  
INCLUDES CUTTER,  
HANDLE, BASE,  
GROMMETS  
AND WASHERS



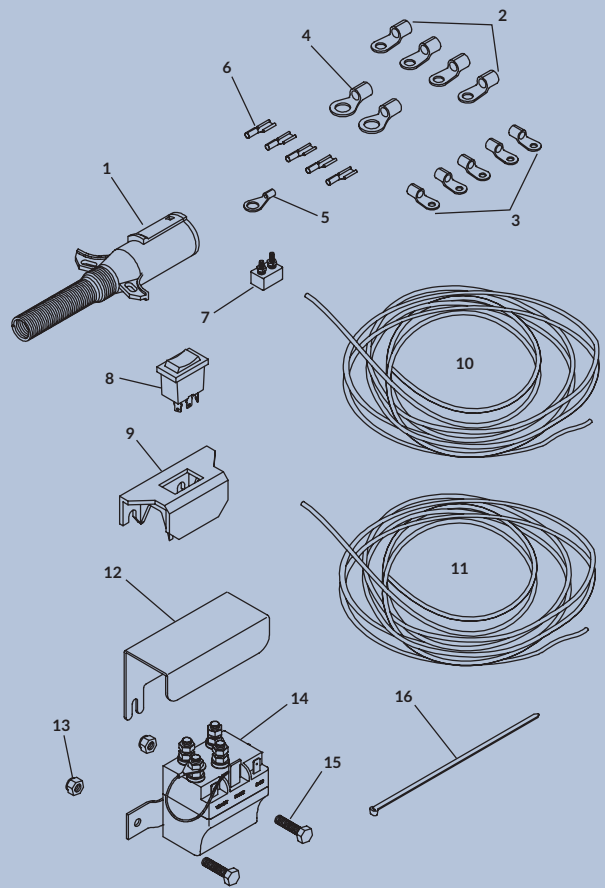
Tarp Repair  
Video

Shur-Co® has created a number of how-to videos, with QR codes to take you right to them. The one pictured here links to step-by-step instructions on tarp repair.

Download any QR scanner app to your Smartphone. Open the app, then hover your phone over your chosen QR code.

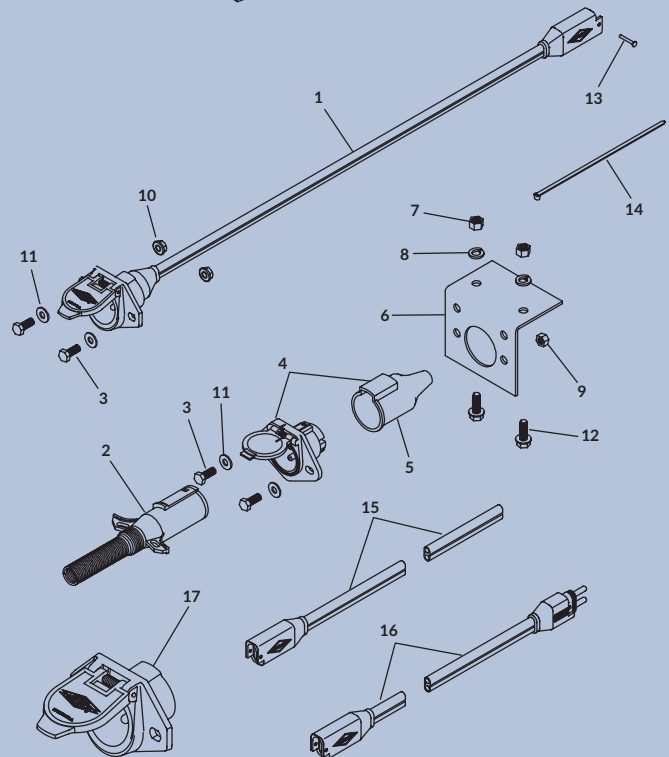
## SHUR-LOK® ELECTRIC – CAB WIRING KITS

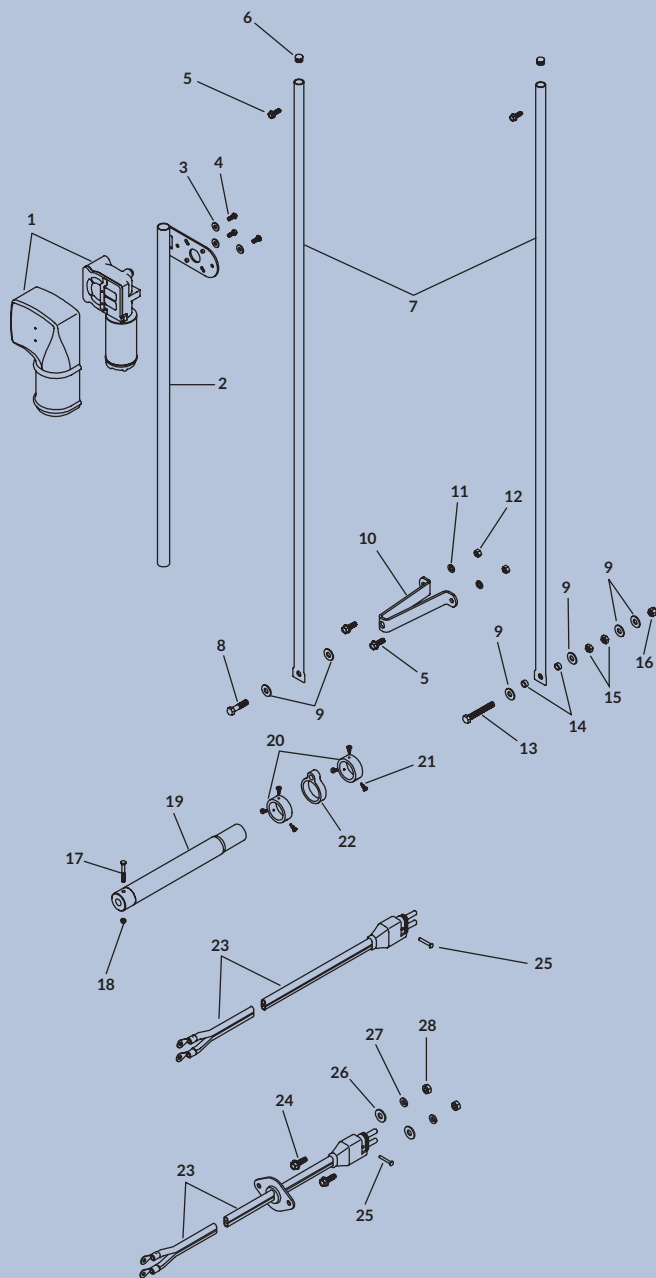
| ITEM                         | PART #  | DESCRIPTION   |
|------------------------------|---------|---|
| <b>WIRELESS OPTION</b>       |         |   |
| 1116928                      |         | Cab Wiring Kit - 40 Amp - Wireless - 20' [Includes 1; 7; 10; 2 of 2 & 4; 15 of 16]  |
| 1119643                      |         | Cab Wiring Kit - 40 Amp - Wireless - 30' [Includes 1; 7; 10; 2 of 2 & 4; 15 of 16]  |
| <b>ROCKER SWITCH OPTION</b>  |         |   |
| 1116473                      |         | Cab Wiring Kit - 40 Amp - Rocker Switch - 20' [Includes 1; 5; 7; 8; 9; 10; 11; 12; 14; 2 of 4, 13 & 15; 4 of 2; 5 of 6; 6 of 3; 15 of 16] |
| 1118368                      |         | Electrical Part Kit w/Rocker Switch - 40 Amp Modified [Includes 5; 7; 8; 9; 12; 14; 2 of 4, 13 & 15; 4 of 2; 5 of 6; 6 of 3]              |
| <b>ELECTRICAL COMPONENTS</b> |         |   |
| 1120855                      |         | Breaker Hardware [Includes 7; 2 of 2 & 4; 15 of 16]   |
| 1                            | 1115385 | Heavy-Duty Dual-Conductor Plug - Vertical Pin   |
| 2                            | 1703245 | Ring Terminal - 6 Ga. x #10 Stud - Motor/Breaker  |
| 3                            | 1702707 | Ring Terminal - 6 Ga. x 1/4" Stud - Motor/Solenoid  |
| 4                            | 1703244 | Ring Terminal - 6 Ga. x 3/8" Stud - Battery   |
| 5                            | 1704153 | Ring Terminal - 14 Ga. x 1/4" Stud - Solenoid   |
| 6                            | 1703659 | Push-On Terminal - 14 Ga. x 1/4" Switch/Solenoid  |
| 7                            | 1704354 | 40-Amp Modified Reset Circuit Breaker   |
| 8                            | 1116020 | Rocker Switch   |
| 9                            | 1703661 | Rocker Switch Mounting Bracket  |
| 10                           | 1119078 | Dual-Conductor Wire - 6 Ga. - 20'   |
|                              | 1118495 | Dual-Conductor Wire - 6 Ga. - 30'   |
|                              | 1703822 | Dual-Conductor Wire - 6 Ga. (per foot)  |
| 11                           | 1116482 | Electrical Wire - 14 Ga. Lead - 15'   |
| 12                           | 1703896 | Solenoid Cover  |
| 13                           | 1701543 | Nylon Lock Hex Nut - 1/4"   |
| 14                           | 1703845 | Motor-Reversing Solenoid  |
| 15                           | 1700381 | Hex Head Cap Screw - 1/4" x 1"  |
| 16                           | 1703231 | Cable Tie - 8   |



## SHUR-LOK® ELECTRIC – DUAL CONDUCTOR KITS

| ITEM    | PART #  | DESCRIPTION   |
|---------|---------|---|
| 1125580 |         | SMARTwire™ Dual-Connector Socket w/Hardware [Includes 1; 13; 17; 2 of 3, 10 & 11]         |
| 1109016 |         | Two-Pole Connector w/Hardware - Vertical Pin [Includes 2; 4; 6; 14; 2 of 3, 7, 8, 9 & 12] |
| 1109017 |         | Dual-Conductor Hardware [Includes 2 of 3, 7, 8, 10, 11 & 12]                              |
| 1       | 1120670 | SMARTwire™ Dual-Conductor Socket - 6 Ga. x 3'6"   |
|         | 1126944 | SMARTwire™ Dual-Conductor Socket - 4 Ga. x 3'6"   |
| 2       | 1115385 | Heavy-Duty Dual-Conductor Plug - Vertical Pin   |
| 3       | 1701045 | Hex Head Cap Screw - 5/16" x 3/4"   |
| 4       | 1119557 | Heavy-Duty Dual-Conductor Socket w/Boot   |
| 5       | 1704573 | Sealing Boot - Socket Half Dual Conductor   |
| 6       | 1109015 | Conductor Plug Mounting Bracket   |
| 7       | 1700407 | Hex Nut - 3/8"  |
| 8       | 1700434 | Lock Washer - 3/8"  |
| 9       | 1700411 | Hex Nut - 5/16"   |
| 10      | 1704946 | Top Lock Flange Nut - 5/16"   |
| 11      | 1700427 | Flat Washer - 1/4"  |
| 12      | 1700400 | Self-Tapping Screw - 3/8" x 1"  |
| 13      | 1704751 | Harness Lock Pin - 1/4" x 7/8"  |
| 14      | 1703231 | Cable Tie - 8"  |
| 15      | 1704994 | SMARTwire™ - 6 Ga. - Socket - 40'   |
| 16      | 1125597 | SMARTwire™ - 6 Ga. - Plug/Socket - 30'  |
| 17      | 1704978 | Dual Conductor Housing - Female   |



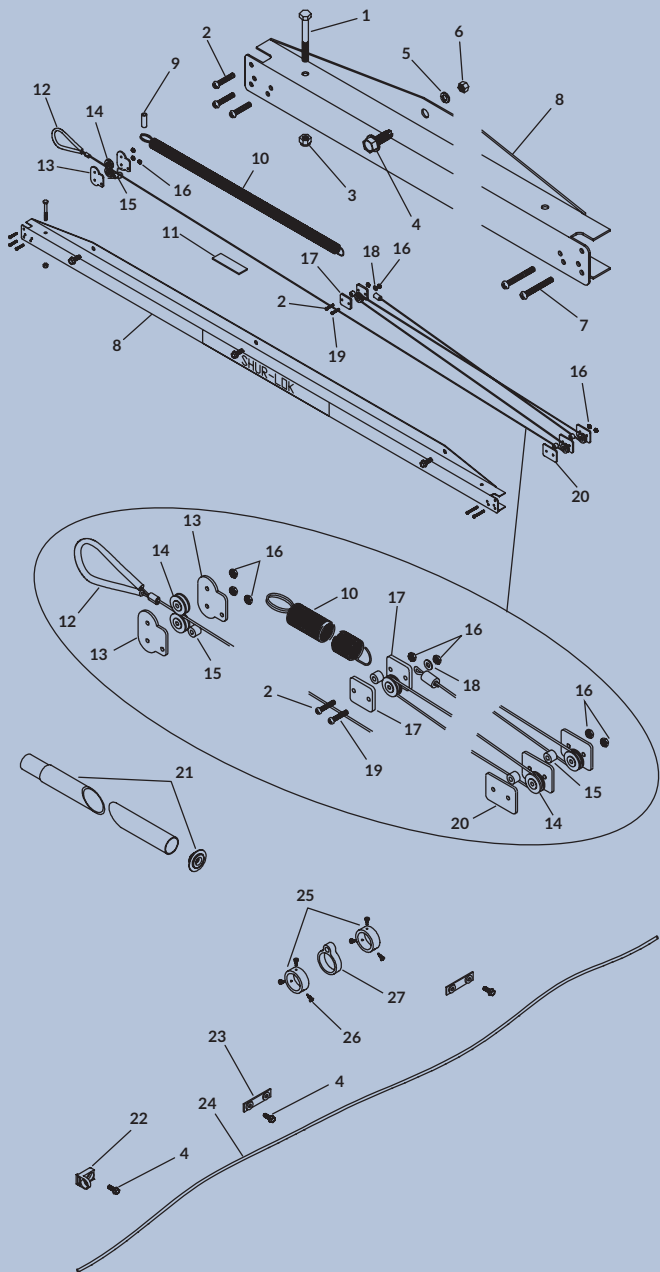


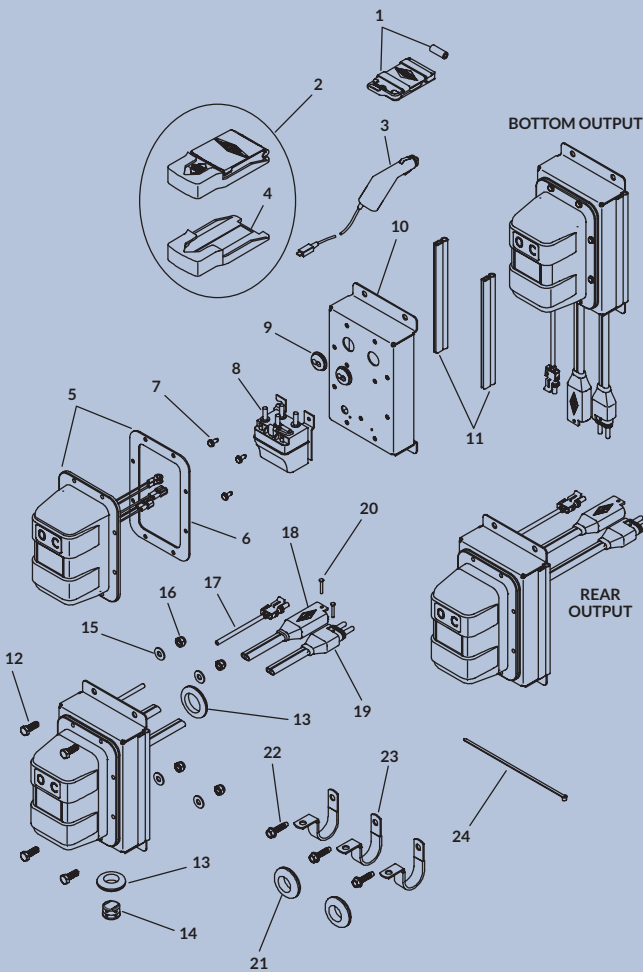
## SHUR-LOK® ELECTRIC – FRONT ARMS

| ITEM | PART #  | DESCRIPTION  |
|------|---------|--|
|      | 1120854 | Wiring Plate Hardware<br>[Includes 2 of 24, 26, 27 & 28] |
| 1    | 1704878 | Durabuilt™ Motor w/Cover - 3-1/8" Shaft                  |
| 2    | 1110413 | Slide Arm  |
|      | 1115559 | Stainless Slide Arm                                      |
| 3    | 1700428 | Flat Washer - 5/16"                                      |
|      | 1201237 | Stainless Flat Washer - 5/16"                            |
| 4    | 1701045 | Hex Head Cap Screw - 5/16" x 3/4"                        |
|      | 1201269 | Stainless Hex Head Cap Screw - 5/16" x 3/4"              |
| 5    | 1700400 | Self-Tapping Screw - 3/8" x 1"                           |
| 6    | 1701595 | End Plug - 1"  |
| 7    | 1114954 | Swing Arm  |
|      | 1115558 | Stainless Swing Arm                                      |
| 8    | 1701042 | Hex Head Cap Screw - 1/2" x 2"                           |
| 9    | 1702114 | Flat Washer - 1/2"                                       |
| 10   | 1100033 | Crank Retainer Standoff - 7"                             |
|      | 1115511 | Stainless Crank Retainer Standoff - 7"                   |
| 11   | 1700434 | Lock Washer - 3/8"                                       |
| 12   | 1700407 | Hex Nut - 3/8"   |
| 13   | 1704779 | Hex Head Cap Screw - 1/2" x 3"                           |
| 14   | 1100306 | Retainer Bushing - 11/16"                                |
| 15   | 1700413 | Jam Nut - 1/2"   |
| 16   | 1702115 | Nylon Lock Hex Nut - 1/2"                                |
| 17   | 1703237 | Hex Head Cap Screw - 5/16" x 2-1/2"                      |
| 18   | 1702492 | Top Lock Hex Nut - 5/16"                                 |
| 19   | 1114916 | Roll Tube Extension w/Adapter - 17-1/4"                  |
| 20   | 1704352 | Rear Arm Retaining Collar                                |
| 21   | 1705198 | Self-Drilling Screw - 1/4" x 1"                          |
| 22   | 1114947 | Roll Tube Eye  |
| 23   | 1121367 | SMARTwire™ w/Plate - 6 Ga. Plug x 1/4" Terminal - 10'9"  |
|      | 1704987 | SMARTwire™ - 6 Ga. Plug x 1/4" Terminal - 10'9"          |
| 24   | 1700403 | Self-Tapping Screw - 1/4" x 3/4"                         |
| 25   | 1704751 | Harness Lock Pin - 1/4" x 7/8"                           |
| 26   | 1700427 | Flat Washer - 1/4"                                       |
| 27   | 1700436 | Lock Washer - 1/4"                                       |
| 28   | 1700408 | Hex Nut - 1/4"   |
|      | 1202938 | Rubber Grommet - 1-1/2" Insert (not shown)               |

# SHUR-LOK® ELECTRIC – FRONT/REAR RETURNS

| ITEM                     | PART #  | DESCRIPTION  |
|--------------------------|---------|--|
| <b>CABLE RETURN</b>      |         |  |
| 1111121                  |         | Rear Cable Return Kit [Includes 1; 3; 8; 9; 10; 11; 12; 18; 19; 2 of 7, 13 & 17; 3 of 4, 5, 6 & 20; 4 of 2 & 15; 5 of 14; 7 of 16]               |
| 1120650                  |         | Front Cable Return Kit - Heavy Duty [Includes 1; 3; 8; 9; 10; 11; 12; 18; 19; 2 of 7, 13 & 17; 3 of 4, 5, 6 & 20; 4 of 2 & 15; 5 of 14; 7 of 16] |
| 1                        | 1702672 | Hex Head Cap Screw - 1/4" x 2-1/4"   |
| 2                        | 1702654 | Machine Screw 1"   |
| 3                        | 1701543 | Nylon Lock Hex Nut - 1/4"  |
| 4                        | 1700400 | Self-Tapping Screw - 3/8" x 1"   |
| 5                        | 1700434 | Lock Washer - 3/8"   |
| 6                        | 1700407 | Hex Nut - 3/8"   |
| 7                        | 1702656 | Machine Screw - 1-1/2"   |
| 8                        | 1114728 | Universal Cable Return Housing   |
| 9                        | 1115014 | Spacer Washer - 1-5/8"   |
| 10                       | 1702657 | Extension Spring   |
|                          | 1702896 | Extension Spring - Heavy Duty  |
| 11                       | 1115206 | Velcro® Hook- 1" x 4"  |
| 12                       | 1114582 | Cable w/Return Strap   |
| 13                       | 1114691 | Front Retainer Plate   |
| 14                       | 1703006 | Pulley - 1/16" Cable Groove  |
| 15                       | 1111056 | Plastic Spacer - 3/8"  |
| 16                       | 1702653 | Machine Screw Nut  |
| 17                       | 1112997 | Rope Block Retainer Plate  |
| 18                       | 1111054 | Flat Washer - #10  |
| 19                       | 1702655 | Machine Screw - 1-1/4"   |
| 20                       | 1110913 | Rear Retainer Plate  |
| 21                       | 1111808 | End Plug/Cable Retainer w/Screw  |
| <b>SHOCK CORD RETURN</b> |         |  |
| 1114951                  |         | Shock Cord Roll Return Kit [Includes 22; 23; 24; 27; 2 of 4 & 25; 6 of 26]   |
| 22                       | 1703445 | Shock Cord Eye Bracket   |
| 23                       | 1114948 | Shock Cord Tie-Down Strap  |
| 24                       | 1122332 | Shock Cord - 11-1/2"   |
| 25                       | 1704352 | Rear Arm Retaining Collar  |
| 26                       | 1705198 | Self-Drilling Screw - 1/4" x 1"  |
| 27                       | 1114947 | Roll Tube Eye  |





## SHUR-LOK® ELEC. – RECEIVER/REMOTE Non Express

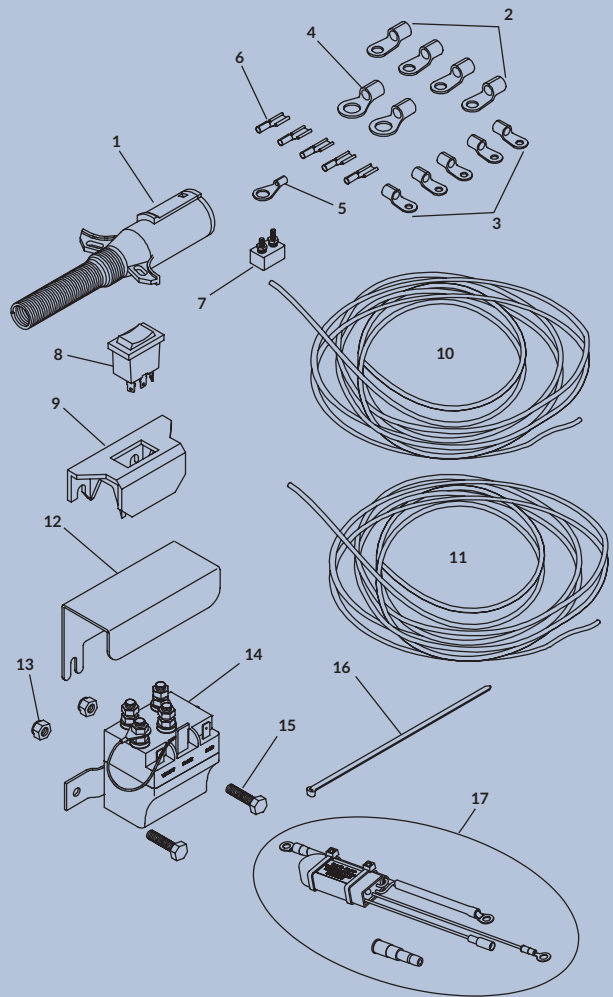
| ITEM                                  | PART #  | DESCRIPTION   |
|---------------------------------------|---------|---|
| <b>SMART3™ RECEIVERS w/SMARTwire™</b> |         |   |
| 1126885                               |         | SMART3™ Receiver w/Remote* - Bottom Output [Includes 1; 5; 8; 10; 11; 13; 17; 18; 19; 21; 2 of 9 & 20; 4 of 12, 15, 16, 22 & 23; 11 of 7; 15 of 24]         |
| 1126884                               |         | SMART3™ Receiver w/Remote* - Rear Output [Includes 1; 5; 8; 10; 11; 13; 14; 17; 18; 19; 21; 2 of 9 & 20; 4 of 12, 15, 16, 22 & 23; 11 of 7; 15 of 24]       |
| 1126900                               |         | SMART3™ Receiver* - Bottom Output [Includes 5; 8; 10; 11; 13; 17; 18; 19; 21; 2 of 9 & 20; 4 of 12, 15, 16, 22 & 23; 11 of 7; 15 of 24]                     |
| 1126899                               |         | SMART3™ Receiver* - Bottom Output [Includes 5; 8; 10; 11; 13; 14; 17; 18; 19; 21; 2 of 9 & 20; 4 of 12, 15, 16, 22 & 23; 11 of 7; 15 of 24]                 |
| <b>SMART2™ RECEIVERS w/SMARTwire™</b> |         |   |
| 1127072                               |         | SMART2™ Receiver w/Remote* - Bottom Output [Includes 2; 3; 4; 5; 8; 10; 11; 13; 17; 18; 19; 21; 2 of 9 & 20; 4 of 12, 15, 16, 22 & 23; 11 of 7; 15 of 24]   |
| 1122788                               |         | SMART2™ Receiver w/Remote* - Rear Output [Includes 2; 3; 4; 5; 8; 10; 11; 13; 14; 17; 18; 19; 21; 2 of 9 & 20; 4 of 12, 15, 16, 22 & 23; 11 of 7; 15 of 24] |
| 1125608                               |         | SMART2™ Receiver* - Bottom Output [Includes 5; 8; 10; 11; 13; 17; 18; 19; 21; 2 of 9 & 20; 4 of 12, 15, 16, 22 & 23; 11 of 7; 15 of 24]                     |
| 1127073                               |         | SMART2™ Receiver* - Rear Output [Includes 5; 8; 10; 11; 13; 14; 17; 18; 19; 21; 2 of 9 & 20; 4 of 12, 15, 16, 22 & 23; 11 of 7; 15 of 24]                   |
| <b>REMOTES</b>                        |         |   |
| 1                                     | 1126867 | SMART3™ Remote  |
|                                       | 1704569 | Carabiner Key Strap (not shown)   |
| 2                                     | 1125179 | SMART2™ Remote w/Cradle   |
| 3                                     | 1704958 | SMART2™ Charging Cable  |
| 4                                     | 1124305 | SMART2™ Remote Cradle   |
|                                       | 1124817 | Lanyard Ring Kit (not shown)  |
| <b>RECEIVER COMPONENTS</b>            |         |   |
|                                       | 1120850 | Receiver Mounting Hardware** [Includes 21; 2 of 20; 4 of 12, 15, 16, 22 & 23]   |
|                                       | 1120906 | Wire Retaining Hardware** [Includes 4 of 22 & 23]   |
|                                       | 1120851 | Wire Retaining Hardware w/Locking Pin** [Includes 20; 4 of 22 & 23]   |
| 5                                     | 1126881 | SMART3™ Solenoid Cover w/Gasket   |
|                                       | 1127074 | SMART2™ Solenoid Cover w/Gasket   |
| 6                                     | 1704309 | Solenoid Cover Gasket   |
| 7                                     | 1704308 | Flange Cap Screw - #10 x 1/2"   |
| 8                                     | 1704312 | Motor-Reversing Solenoid  |
| 9                                     | 1704721 | Rubber Grommet w/Slot - .094" x 7/8"  |
| 10                                    | 1121600 | Solenoid Bracket  |
| 11                                    | 1704369 | Trim Seal (per foot)  |
| 12                                    | 1702926 | Hex Head Cap Screw - 5/16" x 7/8"   |
| 13                                    | 1703282 | Rubber Grommet - 1-1/4" Insert  |
| 14                                    | 1701595 | End Plug - 1"   |
| 15                                    | 1700428 | Flat Washer - 5/16"   |
| 16                                    | 1700419 | Nylon Lock Hex Nut - 5/16"  |
| 17                                    | 1121641 | Encoder Wire - 18 Ga. - 6'4" - SMART2™  |
| 18                                    | 1120817 | SMARTwire™ - 6 Ga. - Socket x 1/4" Terminal - 6'3"  |
| 19                                    | 1704705 | SMARTwire™ - 6 Ga. - Plug x 1/4" Terminal - 2'4"  |
| 20                                    | 1704751 | Harness Lock Pin - 1/4" x 7/8"  |
| 21                                    | 1202938 | Rubber Grommet - 1-1/2" Insert  |
| 22                                    | 1704338 | Self-Tapping Screw - 1/4" x 1"  |
| 23                                    | 1702108 | Wire Clip - 3/4" ID   |
| 24                                    | 1703231 | Cable Tie - 8"  |
|                                       | 1704378 | Dielectric Connector Protector (not shown)  |

\*Receivers include encoder wire but will NOT operate in Express Mode.

\*\*Includes dielectric connector protector.

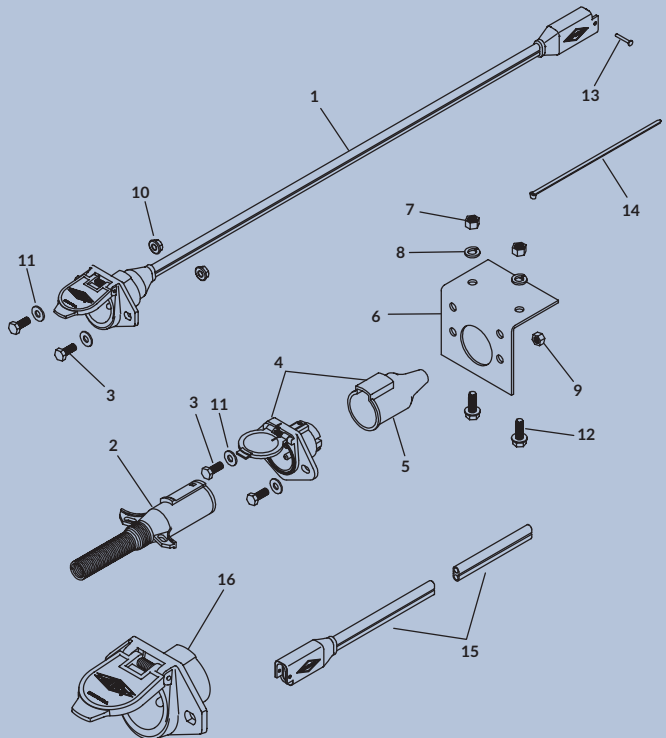
## 4500 SERIES HD – CAB WIRING KITS

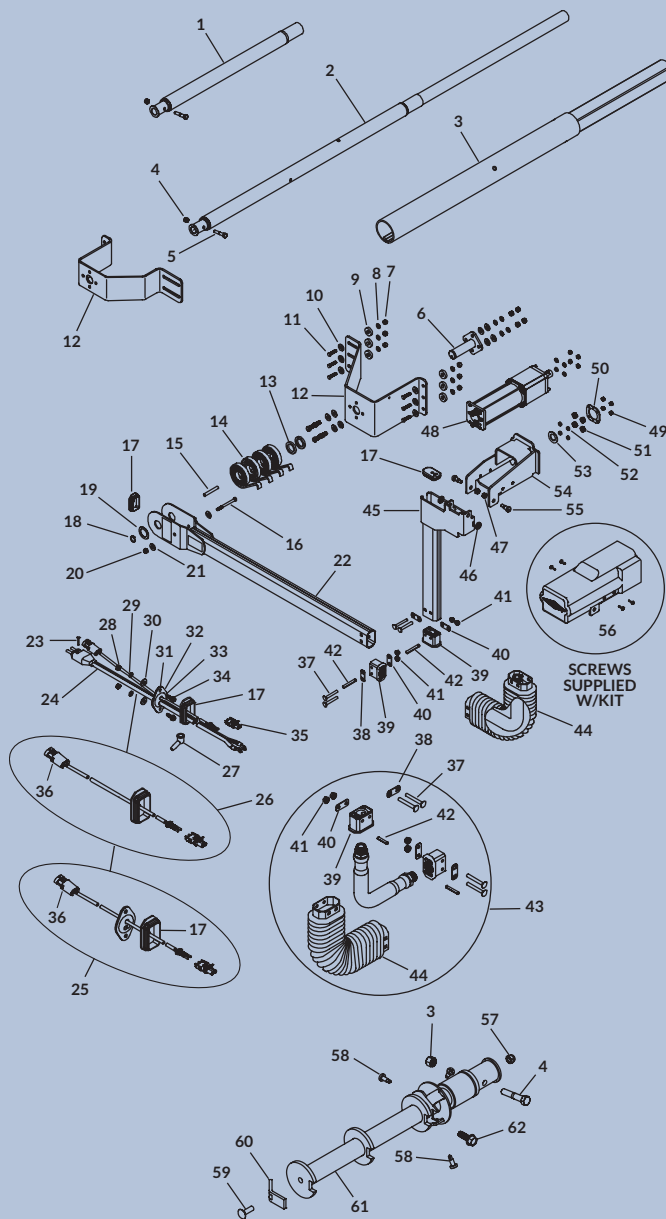
| ITEM                         | PART #  | DESCRIPTION   |
|------------------------------|---------|---|
| <b>WIRELESS OPTION</b>       |         |   |
|                              | 1116928 | Cab Wiring Kit - 40 Amp - Wireless - 20' [Includes 1; 7; 10; 2 of 2 & 4; 15 of 16]  |
|                              | 1119643 | Cab Wiring Kit - 40 Amp - Wireless - 30' [Includes 1; 7; 10; 2 of 2 & 4; 15 of 16]  |
|                              | 1119644 | Cab Wiring Kit - 40 Amp - Wireless - 40' [Includes 1; 7; 10; 2 of 2 & 4; 15 of 16]  |
| <b>ROCKER SWITCH OPTION</b>  |         |   |
|                              | 1127844 | Cab Wiring Kit - 50 Amp SMART Circuit Breaker - Rocker Switch - 20' [Includes 1; 5; 7; 8; 9; 10; 11; 12; 14; 17; 2 of 4, 13 & 15; 4 of 2; 5 of 6; 6 of 3; 15 of 16] |
|                              | 1127845 | Cab Wiring Kit - 50 Amp SMART Circuit Breaker - Rocker Switch - 30' [Includes 1; 5; 7; 8; 9; 10; 11; 12; 14; 17; 2 of 4, 13 & 15; 4 of 2; 5 of 6; 6 of 3; 15 of 16] |
|                              | 1118368 | Electrical Part Kit w/Rocker Switch - 40 Amp Modified [Includes 5; 7; 8; 9; 12; 14; 2 of 4, 13 & 15; 4 of 2; 5 of 6; 6 of 3]  |
| <b>ELECTRICAL COMPONENTS</b> |         |   |
|                              | 1120855 | Breaker Hardware [Includes 7; 2 of 2 & 4; 15 of 16]   |
| 1                            | 1115385 | Heavy-Duty Dual-Conductor Plug - Vertical Pin   |
| 2                            | 1703245 | Ring Terminal - 6 Ga. x #10 Stud - Motor/Breaker  |
| 3                            | 1702707 | Ring Terminal - 6 Ga. x 1/4" Stud - Motor/Solenoid  |
| 4                            | 1703244 | Ring Terminal - 6 Ga. x 3/8" Stud - Battery   |
| 5                            | 1704153 | Ring Terminal - 14 Ga. x 1/4" Stud - Solenoid   |
| 6                            | 1703659 | Push-On Terminal - 14 Ga. x 1/4" Switch/Solenoid  |
| 7                            | 1704354 | 40-Amp Modified Reset Circuit Breaker   |
| 8                            | 1116020 | Rocker Switch   |
| 9                            | 1703661 | Rocker Switch Mounting Bracket  |
| 10                           | 1119078 | Dual-Conductor Wire - 6 Ga. - 20'   |
|                              | 1118495 | Dual-Conductor Wire - 6 Ga. - 30'   |
|                              | 1119645 | Dual-Conductor Wire - 6 Ga. - 40'   |
|                              | 1703822 | Dual-Conductor Wire - 6 Ga. (per foot)  |
| 11                           | 1116482 | Electrical Wire - 14 Ga. Lead - 15'   |
| 12                           | 1703896 | Solenoid Cover  |
| 13                           | 1701543 | Nylon Lock Hex Nut - 1/4"   |
| 14                           | 1703845 | Motor-Reversing Solenoid  |
| 15                           | 1700381 | Hex Head Cap Screw - 1/4" x 1"  |
| 16                           | 1703231 | Cable Tie - 8"  |
| 17                           | 1126783 | 50-Amp SMART Circuit Breaker  |



## 4500 SERIES HD – DUAL CONDUCTOR KITS

| ITEM | PART #  | DESCRIPTION   |
|------|---------|---|
|      | 1125580 | SMARTWire™ Dual-Connector Socket w/Hardware [Includes 1; 13; 2 of 3, 10 & 11]             |
|      | 1109016 | Two-Pole Connector w/Hardware - Vertical Pin [Includes 2; 4; 6; 14; 2 of 3, 7, 8, 9 & 12] |
|      | 1109017 | Dual-Conductor Hardware [Includes 2 of 3, 7, 8, 10, 11 & 12]                              |
| 1    | 1120670 | SMARTWire™ Dual-Conductor Socket  |
| 2    | 1115385 | Heavy-Duty Dual-Conductor Plug - Vertical Pin   |
| 3    | 1701045 | Hex Head Cap Screw - 5/16" x 3/4"   |
| 4    | 1119557 | Heavy-Duty Dual-Conductor Socket w/Boot   |
| 5    | 1704573 | Sealing Boot - Socket Half Dual Conductor   |
| 6    | 1109015 | Conductor Plug Mounting Bracket   |
| 7    | 1700407 | Hex Nut - 3/8"  |
| 8    | 1700434 | Lock Washer - 3/8"  |
| 9    | 1700411 | Hex Nut - 5/16"   |
| 10   | 1704946 | Top Lock Flange Nut - 5/16"   |
| 11   | 1700427 | Flat Washer - 1/4"  |
| 12   | 1700400 | Self-Tapping Screw - 3/8" x 1"  |
| 13   | 1704751 | Harness Lock Pin - 1/4" x 7/8"  |
| 14   | 1703231 | Cable Tie - 8"  |
| 15   | 1704994 | SMARTWire™ - 6 Ga. - Socket - 40'   |
|      | 1704988 | SMARTWire™ - 6 Ga. - Socket - 65'   |
|      | 1123042 | SMARTWire™ - 4 Ga. - Socket - 40'   |
|      | 1704989 | SMARTWire™ - 4 Ga. - Socket - 90'   |
| 16   | 1704978 | Dual Conductor Housing - Female   |





## 4500 SERIES HD - FRONT ARM ASSEMBLIES

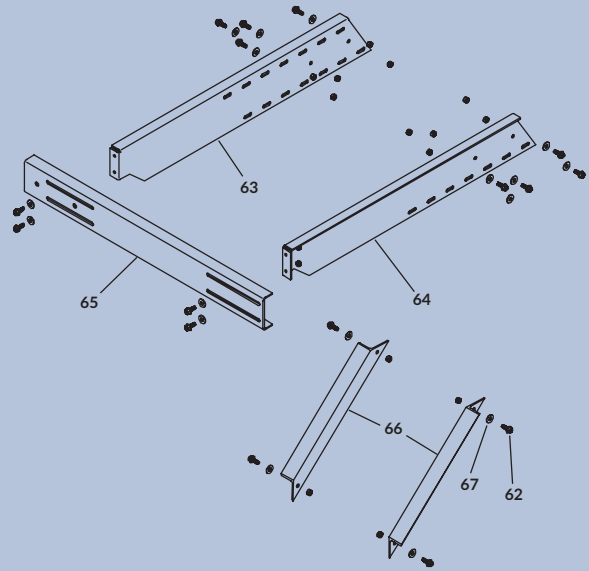
| ITEM | PART #  | DESCRIPTION  |
|------|---------|--|
|      | 1123928 | Front Flex Arm Kit w/o Motor - Grain Trailer<br>[Includes 17; 22; 24; 25; 36; 38; 40; 42; 44;<br>2 of 27, 37 & 41] |
|      | 1125610 | Front Flex Arm Kit w/o Motor - End Dump<br>[Includes 17; 22; 24; 25; 36; 38; 40; 42; 44;<br>2 of 27, 37 & 41]      |
|      | 1122880 | Electric Crank Kit - 3"<br>[Includes 4; 5; 57; 59; 60; 61; 62; 3 of 58]  |
|      | 1121415 | SMARTwire™ Assembly w/Plate - 6 Ga. -<br>Plug x 1/4" Terminal x 10'9" [Includes 24; 25]                            |
|      | 1125612 | SMARTwire™ Assembly - 6 Ga. - Plug x 1/4"<br>Terminal x 10'9" [Includes 17; 24; 26]                                |
|      | 1120977 | Motor Mount Hardware [Includes 4; 5; 53;<br>2 of 50; 4 of 49, 51 & 52]   |
|      | 1121702 | Flex Arm Joint Hardware<br>[Includes 38; 40; 2 of 37 & 41]   |
|      | 1116926 | Spring Support Hardware<br>[Includes 15; 16; 18; 19; 20; 2 of 13 & 21]   |
|      | 1121579 | Pivot Bracket Hardware - 6" Vertical<br>[Includes 6 of 9; 10 of 7, 8 & 11; 14 of 10]                               |
|      | 1117007 | Pivot Bracket Hardware - End Dump<br>[Includes 4 of 11 & 62; 8 of 7 & 8; 12 of 10]                                 |
| 1    | 1120697 | Roll Tube Extension w/Drive Shaft - 34.43"   |
|      | 1120698 | Roll Tube Extension w/Drive Shaft - 45.37"   |
| 2    | 1120699 | Roll Tube Extension w/Drive Shaft - End Dump   |
| 3    | 1124901 | Roll Tube Extension - 3" x 45"   |
| 4    | 1701580 | Nylon Lock Nut - 3/8"  |
| 5    | 1704264 | Hex Head Cap Screw - 3/8" x 2"   |
| 6    | 1116920 | Pivot Pin - 4 Spring   |
| 7    | 1700407 | Hex Nut - 3/8"   |
| 8    | 1700434 | Lock Washer - 3/8"   |
| 9    | 1120291 | Spacer Washer - 1/4" x 1 OD x .406   |
| 10   | 1700429 | Flat Washer - 3/8"   |
| 11   | 1702891 | Hex Head Cap Screw - 3/8" x 1-1/4"   |
| 12   | 1121582 | Pivot Mount Bracket - 6" x 7-1/4" Standoff   |
|      | 1121578 | Pivot Mount Bracket - 6" x 9-1/4" Standoff   |
|      | 1116919 | Pivot Mount Bracket - 4" x 7-1/4" Standoff   |
| 13   | 1118318 | Spacer Washer - 1/4" x 1.81 OD x 1.28"   |
| 14   | 1111027 | Spiral Torsion Spring  |
| 15   | 1117033 | Spacer Tube - .35" x 2-5/8"  |
| 16   | 1201022 | Hex Head Cap Screw - 5/16" x 3-1/2"  |
| 17   | 1704893 | Cap Plug w/Hole  |
| 18   | 1702890 | Flat Washer - 1-1/4" x 1-7/8"  |
| 19   | 1702888 | Retaining Ring - 1-1/4"  |
| 20   | 1700419 | Centerlock Hex Nut - 3/8"  |
| 21   | 1700428 | Flat Washer - 5/16"  |
| 22   | 1121617 | Lower Flex Arm w/Warning Decals - Front  |
| 23   | 1704751 | Harness Lock Pin - 1/4" x 7/8"   |
| 24   | 1704987 | SMARTwire™ - 6 Ga. - Plug x 1/4" Terminal x 10'9"  |
| 25   | 1121429 | SMART2™ Encoder Wire w/Plate - 18 Ga. - 10'6"  |
| 26   | 1121998 | SMART2™ Encoder Wire - 18 Ga. - 10'6"  |
| 27   | 1704330 | Rubber Insulating Boot   |
| 28   | 1700408 | Hex Nut - 1/4"   |
| 29   | 1700436 | Lock Washer - 1/4"   |
| 30   | 1700427 | Flat Washer - 1/4"   |
| 31   | 1121432 | Wiring Plate   |
| 32   | 1704941 | Rubber Grommet - 1-1/4"  |
| 33   | 1704828 | Wiring Plate Gasket  |
| 34   | 1700403 | Self-Tapping Screw - 1/4" x 3/4"   |
| 35   | 1704799 | Weatherpack - Cavity Plug  |
| 36   | 1704798 | Weatherpack - Tower  |
| 37   | 1701455 | Carriage Bolt - 5/16" x 2-1/2" - GR5   |
| 38   | 1121414 | Bellow Plate - Square Holes  |
| 39   | 1704891 | End Fitting  |
| 40   | 1121413 | Bellow Plate - Round Holes   |
| 41   | 1704931 | Flanged Nylon Lock Nut - 5/16"   |
| 42   | 1704966 | Spring Pin - 1/4" x 1-3/8"   |
| 43   | 1125154 | Replacement Flex Arm Joint [Includes Flex Hose;<br>44; 2 of 38, 39, 40 & 42; 4 of 37 & 41]                         |
| 44   | 1704775 | Arm Bellow   |
| 45   | 1121289 | Upper Flex Arm - Motor   |
| 46   | 1120677 | Upper Arm Spacer   |
| 47   | 1701283 | Top Lock Flange Nut - 3/8"   |
| 48   | 1120967 | 4500 Series HD Motor   |
| 49   | 1701543 | Nylon Lock Hex Nut - 1/4"  |
| 50   | 1120681 | Motor Mount Bearing Retainer   |
| 51   | 1704736 | Radial Ball Bearing - 1/4" x 3/4"  |
| 52   | 1120680 | Motor Mount Bearing Spacer   |
| 53   | 1120679 | Motor Spacer   |

Continued on next page

## 4500 SERIES HD – FRONT ARM ASSEMBLIES Cont

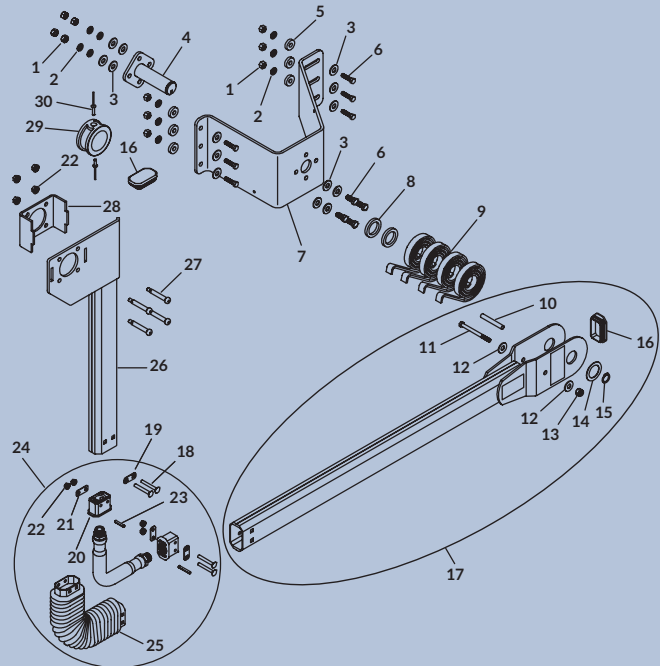
| ITEM                    | PART #  | DESCRIPTION  |
|-------------------------|---------|--|
| 54                      | 1120776 | 4500 Series HD Motor Mount - 7-1/4"  |
|                         | 1120662 | 4500 Series HD Motor Mount - 9-1/4"  |
| 55                      | 1704778 | Shoulder Bolt - 3/8" x 1/2"  |
| 56                      | 1121659 | Motor Cover Kit - Black  |
| 57                      | 1704297 | Nylon Lock Nut - 5/16"   |
| 58                      | 1705198 | Self-Drilling Screw - 1/4" x 1"  |
| 59                      | 1704237 | Carriage Bolt - 5/16" x 1" - GR5   |
| 60                      | 1118194 | Cartridge Clamp  |
| 61                      | 1122264 | Drive Shaft - 4500 w/3" Roll Tube  |
| 62                      | 1700400 | Self-Tapping Screw - 3/8" x 1"   |
| <b>FRONT MOUNT KIT*</b> |         |  |
|                         | 1113002 | Front Mount Kit - Sloped [Includes 64; 65; 66; 2 of 67; 16 of 10 & 68; 20 of 63] |
| 63                      | 1113306 | Universal Extension Bracket - Passenger Side                                     |
| 64                      | 1113307 | Universal Extension Bracket - Driver Side  |
| 65                      | 1112178 | Front Mounting Bracket - Sloped  |
| 66                      | 1112310 | Extended Extension Support Bracket   |
| 67                      | 1700418 | Centerlock Hex Nut - 3/8"  |

\*For sloped trailers in conjunction with vertical mount bracket P/N 1116919 to help mount pivot brackets on a vertical service. Typically used on end dumps.

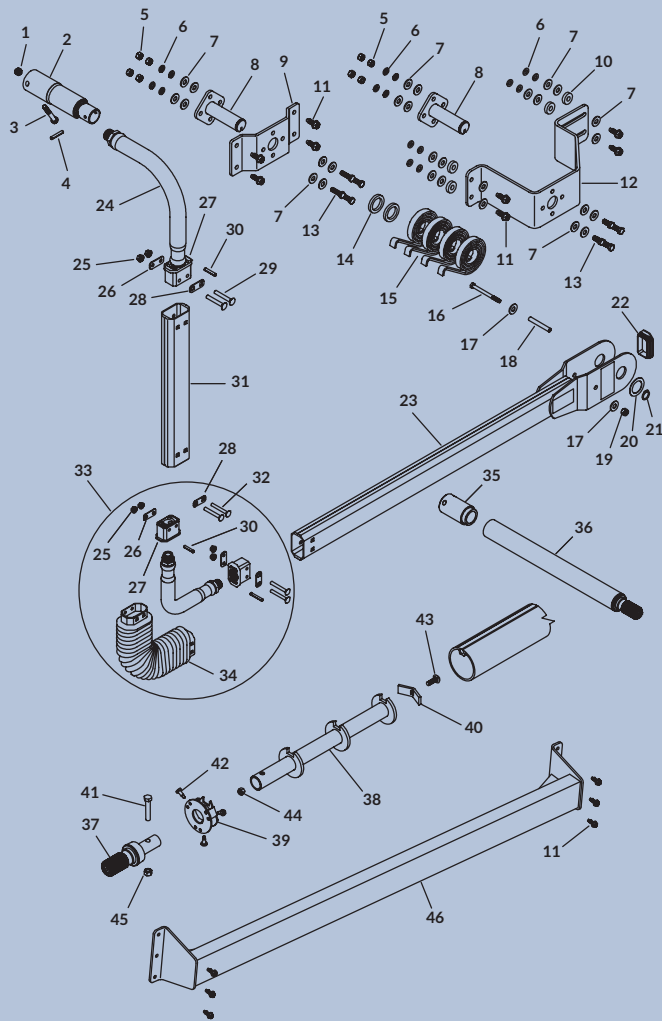


## 4500 SERIES HD – REAR ARM ASSEMBLIES

| ITEM | PART #  | DESCRIPTION  |
|------|---------|--|
|      | 1123929 | Rear Flex Arm Kit [Includes 17; 23; 25; 26; 28; 29; 2 of 16, 19, 21 & 29; 4 of 18 & 27; 6 of 22]       |
|      | 1121702 | Flex Arm Joint Hardware [Includes 19; 21; 2 of 18, 22 & 23]  |
|      | 1116926 | Spring Support Hardware [Includes 10; 11; 13; 14; 15; 2 of 8 & 12]                                     |
|      | 1121579 | Pivot Bracket Hardware - 6" Vertical [Includes 10 of 1, 2 & 6; 6 of 5; 14 of 3]                        |
|      | 1121723 | Exposed Spline/Bearing Hardware [Includes 28; 29; 2 of 16, 19, 20, 21, 23 & 30; 4 of 18 & 27; 8 of 22] |
| 1    | 1700407 | Hex Nut - 3/8"   |
| 2    | 1700434 | Lock Washer - 3/8"   |
| 3    | 1700429 | Flat Washer - 3/8"   |
| 4    | 1116920 | Pivot Pin - 4 Spring   |
| 5    | 1120291 | Spacer Washer - 1/4" x 1 OD x .406   |
| 6    | 1702891 | Hex Head Cap Screw - 3/8" x 1-1/4"   |
| 7    | 1121582 | Pivot Mount Bracket - 6" x 7-1/4" Standoff   |
|      | 1121578 | Pivot Mount Bracket - 6" x 9-1/4" Standoff   |
| 8    | 1118318 | Spacer Washer - 1/4" x 1.81 OD x 1.28"   |
| 9    | 1111027 | Spiral Torsion Spring  |
| 10   | 1117033 | Spacer Tube - .35" x 2-5/8"  |
| 11   | 1201022 | Hex Head Cap Screw - 5/16" x 3-1/2"  |
| 12   | 1700428 | Flat Washer - 5/16"  |
| 13   | 1700419 | Centerlock Hex Nut - 3/8"  |
| 14   | 1702890 | Flat Washer - 1-1/4" x 1-7/8"  |
| 15   | 1702888 | Retaining Ring - 1-1/4"  |
| 16   | 1704892 | Cap Plug   |
| 17   | 1121294 | Lower Flex Arm w/Warning Decals - Rear   |
| 18   | 1701455 | Carriage Bolt - 5/16" x 2-1/2" - GR5   |
| 19   | 1121414 | Bellow Plate - Square Holes  |
| 20   | 1704891 | End Fitting  |
| 21   | 1121413 | Bellow Plate - Round Holes   |
| 22   | 1704931 | Flanged Nylon Lock Nut - 5/16"   |
| 23   | 1704966 | Spring Pin - 1/4" x 1-3/8"   |
| 24   | 1125154 | Replacement Flex Arm Joint - 4500 HD [Includes Flex Hose; 25; 2 of 19, 20, 21 & 23; 4 of 18 & 22]      |
| 25   | 1704775 | Arm Bellow   |
| 26   | 1121293 | Upper Flex Arm - Bearing   |
|      | 1124796 | Upper Flex Arm - Bearing* - 3"   |
| 27   | 1704943 | Shoulder Bolt - 3/8" x 2" Thread x 5/16" x 1/2"  |
| 28   | 1121430 | Bearing Mount Box  |
|      | 1123248 | Bearing Mount Box* - 3"  |
| 29   | 1704942 | Rear Arm Bearing Ring  |
|      | 1705160 | Rear Arm Bearing Ring* - 3"  |
| 30   | 1705741 | Blind Rivet - 3/16" x 3/8"   |
|      | 1705224 | Blind Rivet - 3/16" x 5/8" - 3"  |



\*Used with 3" roll tubes.



## 4500 SERIES HD – REAR SIDE HINGE ASSEMBLIES

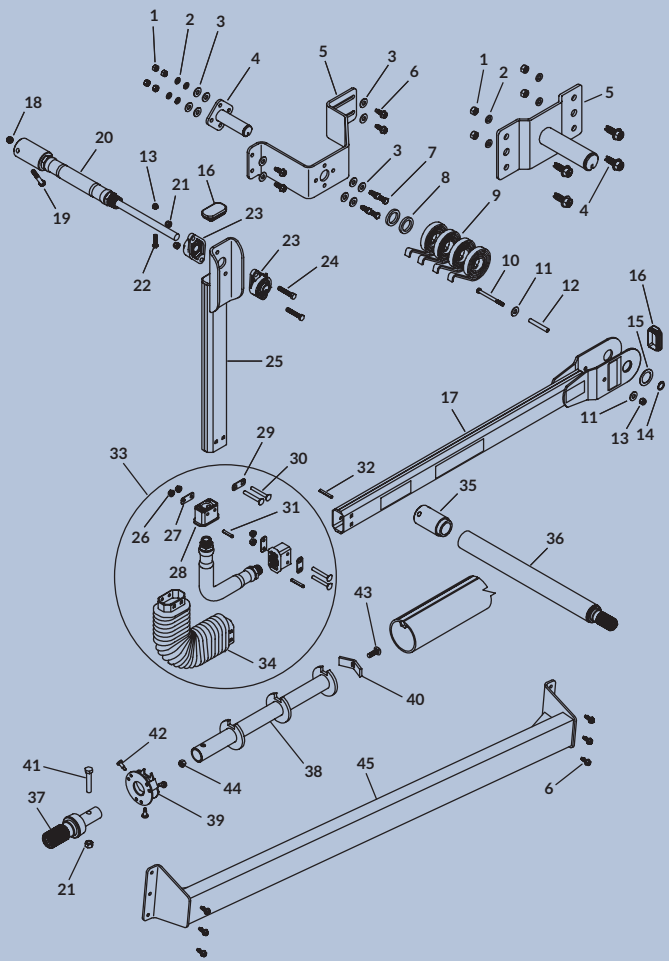
| ITEM | PART #  | DESCRIPTION   |
|------|---------|---|
|      | 1117022 | Manual Override Extension Kit [Includes 35; 36]   |
|      | 1122879 | Manual Crank Kit - 3" [Includes 11; 37; 38; 39; 40; 41; 43; 44; 45; 3 of 42]            |
|      | 1121702 | Flex Arm Joint Hardware [Includes 26; 28; 2 of 25 & 32]                                 |
|      | 1121737 | Rear Flex Arm Hardware - Side Hinge [Includes 1; 3; 4; 26; 28; 2 of 25, 29 & 30]        |
|      | 1116926 | Spring Support Hardware [Includes 16; 18; 19; 20; 21; 2 of 14 & 17]                     |
|      | 1116946 | Pivot Bracket Hardware - 4" Vertical [Includes 4 of 10; 8 of 5, 6 & 13; 12 of 7]        |
| 1    | 1700418 | Centerlock Hex Nut - 3/8"   |
| 2    | 1117777 | Roll Tube Bearing Pack  |
| 3    | 1702573 | Hex Head Cap Screw - 3/8" x 2-1/2"  |
| 4    | 1700445 | Spring Pin - 1/4" x 1-1/2"  |
| 5    | 1700407 | Hex Nut - 3/8"  |
| 6    | 1700434 | Lock Washer - 3/8"  |
| 7    | 1700429 | Flat Washer - 3/8"  |
| 8    | 1116920 | Pivot Pin - 4 Spring  |
| 9    | 1117767 | Pivot Bracket   |
| 10   | 1120291 | Spacer Washer - 1/4" x 1" OD x .406"  |
| 11   | 1700400 | Self-Tapping Screw - 3/8" x 1"  |
| 12   | 1116919 | Pivot Mount Bracket - 4" x 7-1/4" Standoff  |
| 13   | 1702891 | Hex Head Cap Screw - 3/8" x 1-1/4"  |
| 14   | 1118318 | Spacer Washer - 1/4" x 1.81" OD x 1.28"   |
| 15   | 1111027 | Spiral Torsion Spring   |
| 16   | 1201022 | Hex Head Cap Screw - 5/16" x 3-1/2"   |
| 17   | 1700428 | Flat Washer - 5/16"   |
| 18   | 1117033 | Spacer Tube - .35" x 2-5/8"   |
| 19   | 1700419 | Nylon Lock Hex Nut - 5/16"  |
| 20   | 1702890 | Flat Washer - 1-1/4"  |
| 21   | 1702888 | Retaining Ring - 1-1/4"   |
| 22   | 1704892 | Cap Plug  |
| 23   | 1121294 | Lower Flex Arm w/Warning Decals - Rear  |
| 24   | 1121680 | Upper Flex Arm Joint - Side Hinge   |
| 25   | 1704931 | Flanged Nylon Lock Nut - 5/16"  |
| 26   | 1121413 | Bellow Plate - Round Holes  |
| 27   | 1704891 | End Fitting   |
| 28   | 1121414 | Bellow Plate - Square Holes   |
| 29   | 1704971 | Carriage Bolt - 5/16" x 2-1/4" - GR5  |
| 30   | 1704966 | Spring Pin - 1/4" x 1-3/8"  |
| 31   | 1121738 | Upper Flex Arm - Side Hinge   |
| 32   | 1701455 | Carriage Bolt - 5/16" x 2-1/2" - GR5  |
| 33   | 1125154 | Replacement Flex Arm Joint [Includes Flex Hose; 34; 2 of 26, 27, 28 & 30; 4 of 25 & 32] |
| 34   | 1704775 | Arm Bellow  |
| 35   | 1117020 | Manual Override Spline Connector  |
| 36   | 1117023 | Manual Override Spline Assembly   |
| 37   | 1121111 | Manual Crank Spline - 3"  |
| 38   | 1121039 | Rear Cartridge  |
| 39   | 1121040 | Roll Tube End Cap - Rear  |
| 40   | 1118194 | Cartridge Clamp   |
| 41   | 1704264 | Hex Head Cap Screw - 3/8" x 2"  |
| 42   | 1705198 | Self-Drilling Screw - 1/4" x 1"   |
| 43   | 1704237 | Carriage Bolt - 5/16" x 1" - GR5  |
| 44   | 1704297 | Nylon Lock Nut - 5/16"  |
| 45   | 1701580 | Nylon Lock Nut - 3/8"   |
| 46   |         | Beam Bracket - Live Bottom Trailers   |

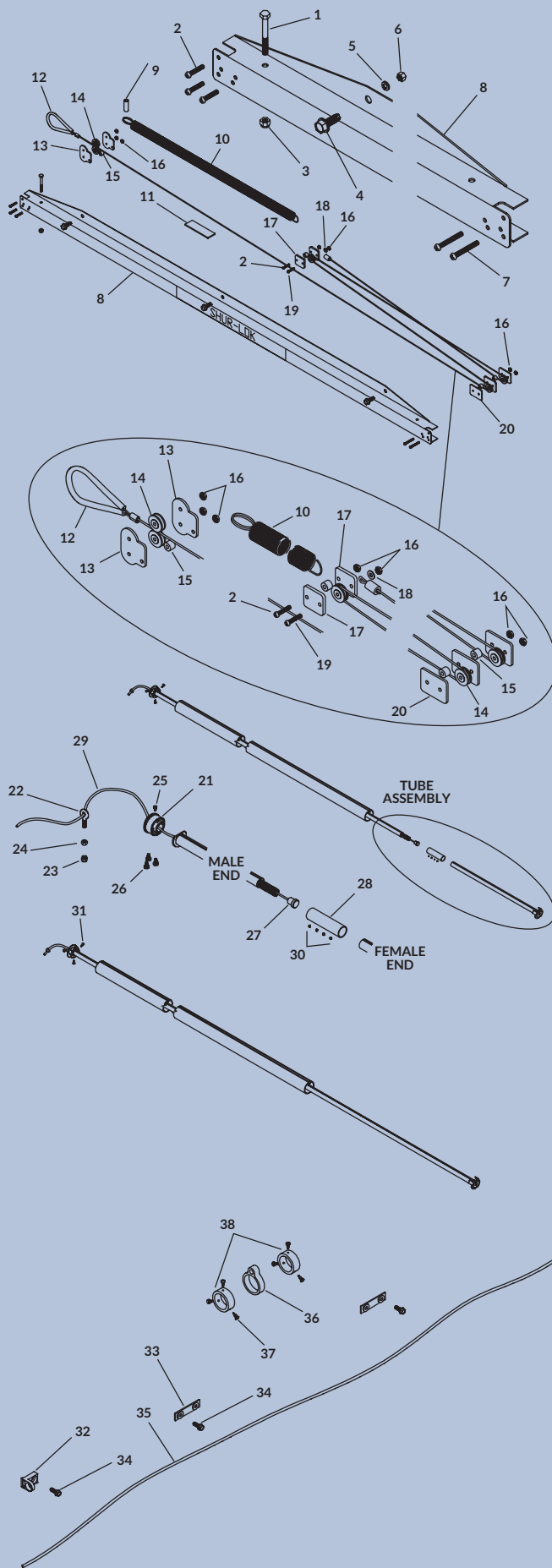
## 4500 SERIES HD – REAR TOP HINGE ASSEMBLIES

| ITEM | PART #  | DESCRIPTION   |
|------|---------|---|
|      | 1126477 | Rear Flex Arm Kit - Top Hinge* [Includes Flex Hose; 4; 20; 25; 28; 31; 34; 4 of 9]                |
|      | 1117022 | Manual Override Extension Kit [Includes 35; 36]   |
|      | 1122879 | Manual Crank Kit - 3" [Includes 11; 37; 38; 39; 40; 41; 43; 44; 45; 3 of 42]                      |
|      | 1121702 | Flex Arm Joint Hardware [Includes 27; 29; 2 of 26 & 30]   |
|      | 1116926 | Spring Support Hardware [Includes 10; 12; 13; 14; 15; 2 of 8 & 11]                                |
|      | 1117007 | Pivot Bracket Hardware - End Dump [Includes 4 of 7; 8 of 1 & 2; 12 of 3]                          |
|      | 1116946 | Pivot Bracket Hardware - 4" Vertical [Includes 4 of 6 & 7; 8 of 1 & 2; 12 of 3]                   |
|      | 1121736 | Extension Hardware - Gate Flex™ [Includes 13; 18; 19; 22; 28; 32; 2 of 16, 21, 23 & 24]           |
|      | 1121647 | HD Flex Joint Hardware [Includes 2 of 27 & 29; 4 of 26 & 30]                                      |
| 1    | 1700407 | Hex Nut - 3/8"  |
| 2    | 1700434 | Lock Washer - 3/8"  |
| 3    | 1700429 | Flat Washer - 3/8"  |
| 4    | 1116920 | Pivot Pin - 4 Spring  |
| 5    | 1116919 | Pivot Mounting Bracket - 7-1/4" Standoff  |
|      | 1116994 | Pivot Bracket - Sloped - Gate Flex™**   |
| 6    | 1700400 | Self-Tapping Screw - 3/8" x 1"  |
| 7    | 1702891 | Hex Head Cap Screw - 3/8" x 1-1/4"  |
| 8    | 1118318 | Spacer Washer - 1/4" x 1.81" OD x 1.28"   |
| 9    | 1111027 | Spiral Torsion Spring   |
| 10   | 1201022 | Hex Head Cap Screw - 5/16" x 3-1/2"   |
| 11   | 1700428 | Flat Washer - 5/16"   |
| 12   | 1117033 | Spacer Tube - .35" x 2-3/8"   |
| 13   | 1700419 | Nylon Lock Hex Nut - 5/16"  |
| 14   | 1702888 | External Retaining Ring - 1-1/4"  |
| 15   | 1702890 | Flat Washer - 1-1/4"  |
| 16   | 1704892 | Cap Plug  |
| 17   | 1121294 | Lower Flex Arm w/Warning Decals - Rear  |
|      | 1121999 | Lower Arm Assembly  |
| 18   | 1700418 | Centerlock Hex Nut - 3/8"   |
| 19   | 1702573 | Hex Head Cap Screw - 3/8" x 2-1/2"  |
| 20   | 1116990 | Gate Flex™  |
| 21   | 1701580 | Nylon Lock Hex Nut - 3/8"   |
| 22   | 1703487 | Hex Head Cap Screw - 5/16" x 1-1/2"   |
| 23   | 1704703 | Flange Bearing - 20mm - 2 Bolt  |
| 24   | 1704264 | Hex Head Cap Screw - 3/8" x 2"  |
| 25   | 1121649 | Upper Flex Arm - Gate Flex™   |
| 26   | 1704931 | Flanged Nylon Lock Nut - 5/16"  |
| 27   | 1121413 | Bellow Plate - Round Holes  |
| 28   | 1704891 | End Fitting   |
| 29   | 1121414 | Bellow Plate - Square Holes   |
| 30   | 1701455 | Carriage Bolt - 5/16" x 2-1/2"  |
| 31   | 1704966 | Spring Pin - 1/4" x 1-3/8"  |
| 32   | 1701360 | Spring Pin - 1/4" x 1-3/4"  |
| 33   | 1125154 | Replacement Flex Arm Joint - 4500 HD [Includes Flex Hose; 34; 2 of 27, 28, 29 & 31; 4 of 26 & 30] |
| 34   | 1704775 | Arm Bellow  |
| 35   | 1117020 | Manual Override Spline Connector  |
| 36   | 1117023 | Manual Override Spline Assembly   |
| 37   | 1121111 | Manual Crank Spline - 3"  |
| 38   | 1121039 | Rear Cartridge  |
| 39   | 1121040 | Roll Tube End Cap - Rear  |
| 40   | 1118194 | Cartridge Clamp   |
| 41   | 1704264 | Hex Head Cap Screw - 3/8" x 2"  |
| 42   | 1705198 | Self-Drilling Screw - 1/4" x 1"   |
| 43   | 1704237 | Carriage Bolt - 5/16" x 1" - GR5  |
| 44   | 1704297 | Nylon Lock Nut - 5/16"  |
| 45   |         | Beam Bracket - Live Bottom Trailers   |

\*Does NOT include manual override.

\*\*Gate Flex™ pivot bracket P/N 1116994 is used in conjunction with live-bottom beam bracket. Typically used on trailers with knife gates.





## 4500 SERIES HD - REAR RETURNS

| ITEM                     | PART #  | DESCRIPTION   |
|--------------------------|---------|---|
| <b>REAR CABLE RETURN</b> |         |   |
| 1113025                  |         | Rear Cable Return Kit - Heavy Duty [Includes 1; 3; 8; 9; 10; 11; 12; 18; 19; 2 of 7, 13 & 17; 3 of 4, 5, 6 & 20; 4 of 2 & 15; 5 of 14; 7 of 16]       |
| 1125581                  |         | Rear Cable Return Kit* - Heavy Duty - 3" [Includes 1; 3; 8; 9; 10; 11; 12; 18; 19; 2 of 7, 13 & 17; 3 of 4, 5, 6 & 20; 4 of 2 & 15; 5 of 14; 7 of 16] |
| 1111469                  |         | Cable Return Mounting Hardware [Includes 3 of 4, 5 & 6]   |
| 1                        | 1702672 | Hex Head Cap Screw - 1/4" x 2-1/4"  |
| 2                        | 1702654 | Machine Screw - 1"  |
| 3                        | 1701543 | Nylon Lock Hex Nut - 1/4"   |
| 4                        | 1700400 | Self-Tapping Screw - 3/8" x 1"  |
| 5                        | 1700434 | Lock Washer - 3/8"  |
| 6                        | 1700407 | Hex Nut - 3/8"  |
| 7                        | 1702656 | Machine Screw - 1-1/2"  |
| 8                        | 1114728 | Universal Cable Return Housing  |
| 9                        | 1115014 | Spacer Washer - 1-5/8"  |
| 10                       | 1702896 | Extension Spring - Heavy Duty   |
| 11                       | 1115206 | Velcro® Hook - 1" x 4"  |
| 12                       | 1114582 | Cable w/Return Strap  |
|                          | 1124870 | Cable w/Return Strap* - 3"  |
| 13                       | 1114691 | Front Retainer Plate  |
| 14                       | 1703006 | Pulley - 1/16" Cable Groove   |
| 15                       | 1111056 | Plastic Spacer - 3/8" Thick   |
| 16                       | 1702653 | Machine Screw Nut   |
| 17                       | 1112997 | Rope Block Retainer Plate   |
| 18                       | 1111054 | Flat Washer - #10   |
| 19                       | 1702655 | Machine Screw - 1-1/4"  |
| 20                       | 1110913 | Rear Retainer Plate   |
| <b>REAR SHUR-RETURN™</b> |         |   |
| 1125119                  |         | Shur-Return™ Kit - Heavy Duty [Includes Tube Assembly; 21; 22; 23; 24; 25; 5 of 26]   |
| 1125121                  |         | UPS-able Shur-Return™ Kit - Heavy Duty [Includes Tube Assembly; 21; 22; 23; 24; 25; 28; 4 of 30; 5 of 26]   |
| 1125123                  |         | Shur-Return™ Kit* - Heavy Duty - 3" [Includes Tube Assembly; 21; 22; 23; 24; 25; 3 of 31; 5 of 26]  |
| 1125125                  |         | UPS-able Shur-Return™ Kit*** - Heavy Duty - 3" [Includes Tube Assembly; 21; 22; 23; 24; 25; 28; 3 of 31; 4 of 30; 5 of 26]                            |
| 1107128                  |         | Shur-Return™ Hardware [Includes 21; 22; 23; 24; 25; 5 of 26]  |
| 1124881                  |         | Shur-Return™ Hardware* - 3" [Includes 21; 22; 23; 24; 25; 3 of 31; 5 of 26]   |
| 21                       | 1100138 | Nylon End Plug  |
| 22                       | 1700717 | Eyebolt Anchor - 5/16"  |
| 23                       | 1700419 | Centerlock Hex Nut - 3/8"   |
| 24                       | 1700411 | Hex Nut - 5/16"   |
| 25                       | 1704743 | Self-Drilling Screw - #10 x 1/2"  |
| 26                       | 1700736 | Self-Tapping Screw - 1/4" x 1/2"  |
| 27                       | 1100827 | Spring Retainer Plug  |
| 28                       | 1107879 | Connector Sleeve  |
| 29                       | 1100826 | Shur-Return™ Rope***  |
| 30                       | 1701423 | Hex Socket Set Screw - #10 x 3/16"  |
| 31                       | 1705198 | Self-Drilling Screw - 1/4" x 1"   |
| <b>SHOCK CORD RETURN</b> |         |   |
| 1114951                  |         | Shock Cord Roll Return Kit [Includes 32; 33; 35; 36; 2 of 34 & 38; 6 of 37]   |
| 1125583                  |         | Shock Cord Roll Return Kit* - 3" [Includes 32; 33; 35; 36; 2 of 34 & 38; 6 of 37]   |
| 32                       | 1703445 | Shock Cord Eye Bracket  |
| 33                       | 1114948 | Shock Cord Tie-Down Strap   |
| 34                       | 1700400 | Self-Tapping Screw - 3/8" x 1"  |
| 35                       | 1122332 | Shock Cord - 11-1/2"  |
| 36                       | 1114947 | Roll Tube Eye   |
|                          | 1705552 | Roll Tube Eye* - 3"   |
| 37                       | 1705198 | Self-Drilling Screw - 1/4" x 1"   |
| 38                       | 1704352 | Rear Arm Retaining Collar   |
|                          | 1122256 | Rear Arm Retaining Collar* - 3"   |

\*Used with 3" roll tubes.

\*\*Additional overlength shipping charges apply.

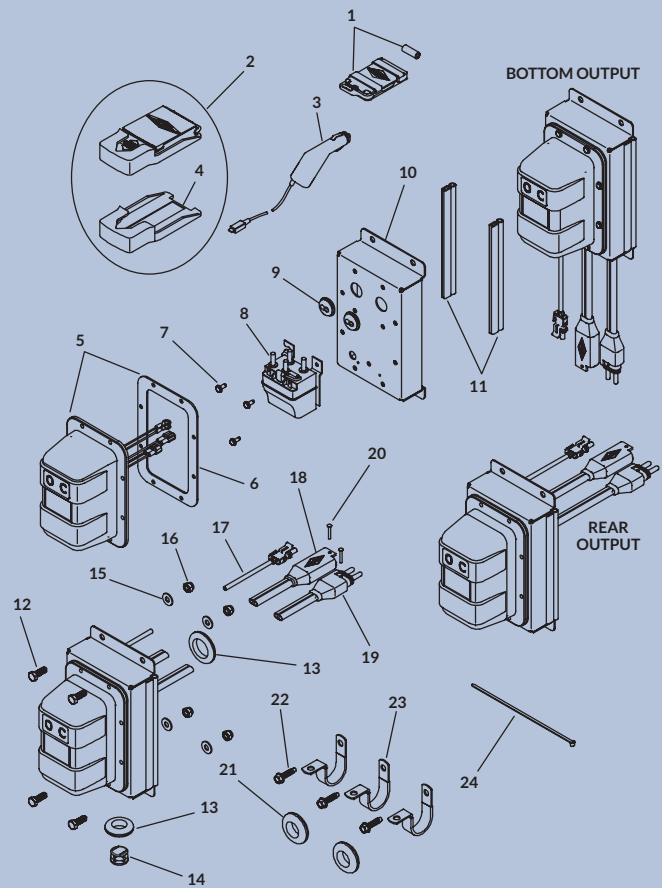
\*\*\*Shur-Return™ rope does NOT stretch; see stretch cord on next page.

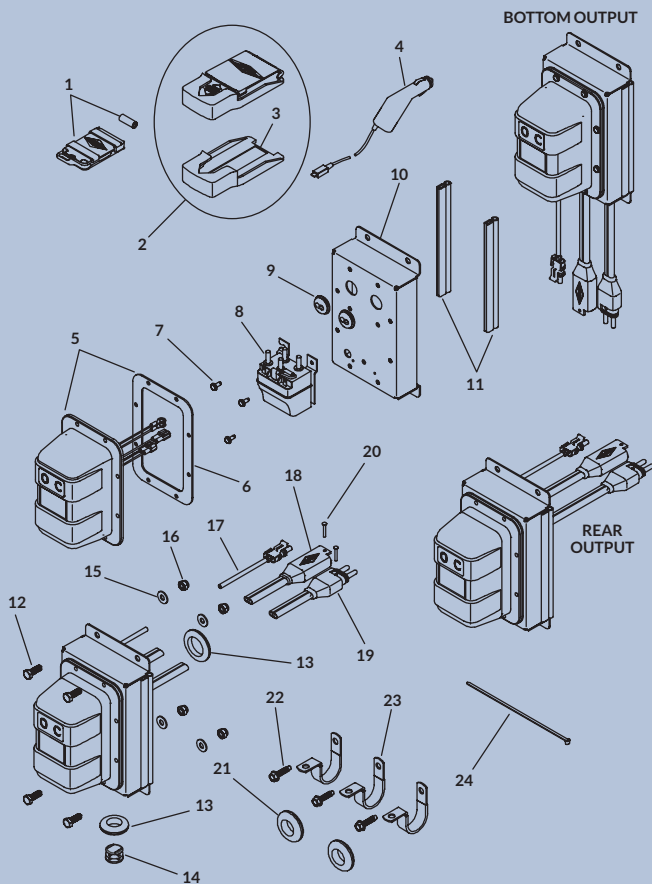
# 4500 SERIES HD – RECEIVER/REMOTE Non Express

| ITEM                                  | PART #  | DESCRIPTION   |
|---------------------------------------|---------|---|
| <b>SMART3™ RECEIVERS w/SMARTwire™</b> |         |   |
| 1126965                               |         | SMART3™ Receiver w/Remote* - Bottom Output [Includes 1; 5; 8; 10; 11; 13; 17; 18; 19; 21; 2 of 9 & 20; 4 of 12, 15, 16, 22 & 23; 11 of 7; 15 of 24]         |
| 1126966                               |         | SMART3™ Receiver w/Remote* - Rear Output [Includes 1; 5; 8; 10; 11; 13; 14; 17; 18; 19; 21; 2 of 9 & 20; 4 of 12, 15, 16, 22 & 23; 11 of 7; 15 of 24]       |
| 1126967                               |         | SMART3™ Receiver* - Bottom Output [Includes 5; 8; 10; 11; 13; 17; 18; 19; 21; 2 of 9 & 20; 4 of 12, 15, 16, 22 & 23; 11 of 7; 15 of 24]                     |
| 1126968                               |         | SMART3™ Receiver* - Bottom Output [Includes 5; 8; 10; 11; 13; 14; 17; 18; 19; 21; 2 of 9 & 20; 4 of 12, 15, 16, 22 & 23; 11 of 7; 15 of 24]                 |
| <b>SMART2™ RECEIVERS w/SMARTwire™</b> |         |   |
| 1122135                               |         | SMART2™ Receiver w/Remote* - Bottom Output [Includes 2; 3; 4; 5; 8; 10; 11; 13; 17; 18; 19; 21; 2 of 9 & 20; 4 of 12, 15, 16, 22 & 23; 11 of 7; 15 of 24]   |
| 1122041                               |         | SMART2™ Receiver w/Remote* - Rear Output [Includes 2; 3; 4; 5; 8; 10; 11; 13; 14; 17; 18; 19; 21; 2 of 9 & 20; 4 of 12, 15, 16, 22 & 23; 11 of 7; 15 of 24] |
| 1127070                               |         | SMART2™ Receiver* - Bottom Output [Includes 5; 8; 10; 11; 13; 17; 18; 19; 21; 2 of 9 & 20; 4 of 12, 15, 16, 22 & 23; 11 of 7; 15 of 24]                     |
| 1122137                               |         | SMART2™ Receiver* - Rear Output [Includes 5; 8; 10; 11; 13; 14; 17; 18; 19; 21; 2 of 9 & 20; 4 of 12, 15, 16, 22 & 23; 11 of 7; 15 of 24]                   |
| <b>REMOTES</b>                        |         |   |
| 1                                     | 1126867 | SMART3™ Remote - Grain Trailer  |
|                                       | 1704569 | Carabiner Key Strap (not shown)   |
| 2                                     | 1125179 | SMART2™ Remote w/Cradle   |
| 3                                     | 1704958 | SMART2™ Charging Cable  |
| 4                                     | 1124305 | SMART2™ Remote Cradle   |
|                                       | 1124817 | Lanyard Ring Kit (not shown)  |
| <b>RECEIVER COMPONENTS</b>            |         |   |
|                                       | 1120850 | Receiver Mounting Hardware** [Includes 21; 2 of 20; 4 of 12, 15, 16, 22 & 23]   |
|                                       | 1120906 | Wire Retaining Hardware** [Includes 4 of 22 & 23]   |
|                                       | 1120851 | Wire Retaining Hardware w/Locking Pin** [Includes 20; 4 of 22 & 23]   |
| 5                                     | 1126880 | SMART3™ Solenoid Cover w/Gasket - Non Express   |
|                                       | 1122955 | SMART2™ Solenoid Cover w/Gasket - Non Express   |
| 6                                     | 1704309 | Solenoid Cover Gasket   |
| 7                                     | 1704308 | Flange Cap Screw - #10 x 1/2"   |
| 8                                     | 1704312 | Motor-Reversing Solenoid  |
| 9                                     | 1704721 | Rubber Grommet w/Slot - .094" x 7/8"  |
| 10                                    | 1121600 | Solenoid Bracket  |
| 11                                    | 1704369 | Trim Seal (per foot)  |
| 12                                    | 1702926 | Hex Head Cap Screw - 5/16" x 7/8"   |
| 13                                    | 1703282 | Rubber Grommet - 1-1/4" Insert  |
| 14                                    | 1701595 | End Plug - 1"   |
| 15                                    | 1700428 | Flat Washer - 5/16"   |
| 16                                    | 1700419 | Nylon Lock Hex Nut - 5/16"  |
| 17                                    | 1121641 | Encoder Wire - 18 Ga. - 6'4" - SMART2™  |
| 18                                    | 1120817 | SMARTwire™ - 6 Ga. - Socket x 1/4" Terminal - 6'3"  |
| 19                                    | 1704705 | SMARTwire™ - 6 Ga. - Plug x 1/4" Terminal - 2'4"  |
| 20                                    | 1704751 | Harness Lock Pin - 1/4" x 7/8"  |
| 21                                    | 1202938 | Rubber Grommet - 1-1/2" Insert  |
| 22                                    | 1704338 | Self-Tapping Screw - 1/4" x 1"  |
| 23                                    | 1702108 | Wire Clip - 3/4" ID   |
| 24                                    | 1703231 | Cable Tie - 8"  |
|                                       | 1704378 | Dielectric Connector Protector (not shown)  |

\*Receivers marked "Bottom Output" have SMARTwire™ routed through bottom of receiver. Those marked "Rear Output" have SMARTwire™ routed through back of receiver, which is then routed through face of trailer.

\*\*Includes dielectric connector protector.





## 4500 SERIES HD - RECEIVER/REMOTE Express Mode

| ITEM                                  | PART #  | DESCRIPTION   |
|---------------------------------------|---------|---|
| <b>SMART3™ RECEIVERS w/SMARTwire™</b> |         |   |
| 1126863                               |         | SMART3™ Receiver w/Remote* - Bottom Output [Includes 1; 5; 8; 10; 11; 13; 17; 18; 19; 21; 2 of 9 & 20; 4 of 12, 15, 16, 22 & 23; 11 of 7; 15 of 24]         |
| 1126862                               |         | SMART3™ Receiver w/Remote* - Rear Output [Includes 1; 5; 8; 10; 11; 13; 14; 17; 18; 19; 21; 2 of 9 & 20; 4 of 12, 15, 16, 22 & 23; 11 of 7; 15 of 24]       |
| 1126866                               |         | SMART3™ Receiver* - Bottom Output [Includes 5; 8; 10; 11; 13; 17; 18; 19; 21; 2 of 9 & 20; 4 of 12, 15, 16, 22 & 23; 11 of 7; 15 of 24]                     |
| 1126860                               |         | SMART3™ Receiver* - Rear Output [Includes 5; 8; 10; 11; 13; 14; 17; 18; 19; 21; 2 of 9 & 20; 4 of 12, 15, 16, 22 & 23; 11 of 7; 15 of 24]                   |
| <b>SMART2™ RECEIVERS w/SMARTwire™</b> |         |   |
| 1125007                               |         | SMART2™ Receiver w/Remote* - Bottom Output [Includes 2; 3; 4; 5; 8; 10; 11; 13; 17; 18; 19; 21; 2 of 9 & 20; 4 of 12, 15, 16, 22 & 23; 11 of 7; 15 of 24]   |
| 1125003                               |         | SMART2™ Receiver w/Remote* - Rear Output [Includes 2; 3; 4; 5; 8; 10; 11; 13; 14; 17; 18; 19; 21; 2 of 9 & 20; 4 of 12, 15, 16, 22 & 23; 11 of 7; 15 of 24] |
| 1125616                               |         | SMART2™ Receiver* - Bottom Output [Includes 5; 8; 10; 11; 13; 17; 18; 19; 21; 2 of 9 & 20; 4 of 12, 15, 16, 22 & 23; 11 of 7; 15 of 24]                     |
| 1125008                               |         | SMART2™ Receiver* - Rear Output [Includes 5; 8; 10; 11; 13; 14; 17; 18; 19; 21; 2 of 9 & 20; 4 of 12, 15, 16, 22 & 23; 11 of 7; 15 of 24]                   |
| <b>REMOTES</b>                        |         |   |
| 1                                     | 1126867 | SMART3™ Remote - Grain Trailer  |
|                                       | 1704569 | Carabiner Key Strap (not shown)   |
|                                       | 1122108 | SMART2™ Remote w/Cradle/Charging Cable [Includes 2; 4]  |
| 2                                     | 1122231 | SMART2™ Remote w/Cradle   |
| 3                                     | 1124305 | SMART2™ Remote Cradle   |
| 4                                     | 1704958 | SMART2™ Charging Cable  |
|                                       | 1124817 | Lanyard Ring Kit (not shown)  |
| <b>RECEIVER COMPONENTS</b>            |         |   |
|                                       | 1120850 | Receiver Mounting Hardware** [Includes 21; 2 of 20; 4 of 12, 15, 16, 22 & 23]   |
|                                       | 1120906 | Wire Retaining Hardware** [Includes 4 of 22 & 23]   |
|                                       | 1120851 | Wire Retaining Hardware w/Locking Pin** [Includes 20; 4 of 22 & 23]   |
| 5                                     | 1126873 | SMART3™ Solenoid Cover w/Gasket - Express   |
|                                       | 1124994 | SMART2™ Solenoid Cover w/Gasket - Express   |
| 6                                     | 1704309 | Solenoid Cover Gasket   |
| 7                                     | 1704308 | Flange Cap Screw - #10 x 1/2"   |
| 8                                     | 1704312 | Motor-Reversing Solenoid  |
| 9                                     | 1704721 | Rubber Grommet w/Slot - .094" x 7/8"  |
| 10                                    | 1121600 | Solenoid Bracket  |
| 11                                    | 1704369 | Trim Seal (per foot)  |
| 12                                    | 1702926 | Hex Head Cap Screw - 5/16" x 7/8"   |
| 13                                    | 1703282 | Rubber Grommet - 1-1/4" Insert  |
| 14                                    | 1701595 | End Plug - 1"   |
| 15                                    | 1700428 | Flat Washer - 5/16"   |
| 16                                    | 1700419 | Nylon Lock Hex Nut - 5/16"  |
| 17                                    | 1121641 | Encoder Wire - 18 Ga. - 6'4" - SMART2™  |
| 18                                    | 1120817 | SMARTwire™ - 6 Ga. - Socket x 1/4" Terminal - 6'3"  |
| 19                                    | 1704705 | SMARTwire™ - 6 Ga. - Plug x 1/4" Terminal - 2'4"  |
| 20                                    | 1704751 | Harness Lock Pin - 1/4" x 7/8"  |
| 21                                    | 1202938 | Rubber Grommet - 1-1/2" Insert  |
| 22                                    | 1704338 | Self-Tapping Screw - 1/4" x 1"  |
| 23                                    | 1702108 | Wire Clip - 3/4" ID   |
| 24                                    | 1703231 | Cable Tie - 8"  |
|                                       | 1704378 | Dielectric Connector Protector (not shown)  |

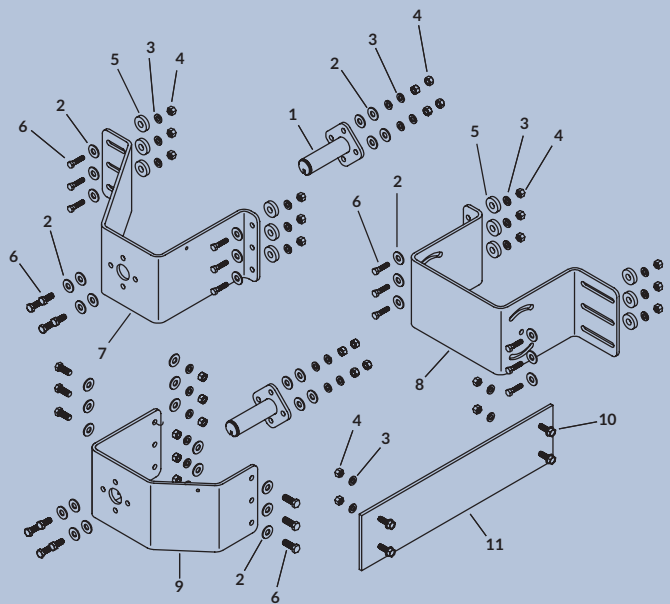
\*Receivers marked "Bottom Output" have SMARTwire™ routed through bottom of receiver. Those marked "Rear Output" have SMARTwire™ routed through back of receiver, which is then routed through face of trailer.

\*\*Includes dielectric connector protector.

## 4500 SERIES HD – PIVOT MOUNT BRACKETS

| ITEM | PART #  | DESCRIPTION  |
|------|---------|--|
|      | 1121579 | Pivot Bracket Hardware - 6" Vertical<br>[Includes 6 of 5; 10 of 3, 4 & 6; 14 of 2] |
|      | 1121580 | Pivot Bracket Hardware - 6" Sloped<br>[Includes 6 of 5; 16 of 3, 4 & 6; 26 of 2]   |
|      | 1117604 | Pivot Pin Hardware [Includes 4 of 3, 4 & 6; 8 of 2]                                |
| 1    | 1116920 | Pivot Pin - 4 Spring   |
| 2    | 1700429 | Flat Washer - 3/8"   |
| 3    | 1700434 | Lock Washer - 3/8"   |
| 4    | 1700407 | Hex Nut - 3/8"   |
| 5    | 1120291 | Spacer Washer - 1/4" x 1" OD x .406"   |
| 6    | 1702891 | Hex Head Cap Screw - 3/8" x 1-1/4"   |
| 7    | 1121582 | Pivot Mount Bracket - 6" x 7-1/4" Standoff   |
|      | 1121578 | Pivot Mount Bracket - 6" x 9-1/4" Standoff   |
|      | 1124678 | Pivot Mount Bracket - 6" x 10-1/4" Standoff  |
|      | 1121517 | Pivot Mount Bracket - 6" x 12-1/4" Standoff  |
| 8    | 1121993 | Pivot Mount Bracket - 6" x 6" Standoff - Sloped                                    |
|      | 1121994 | Pivot Mount Bracket - 6" x 8" Standoff - Sloped                                    |
|      | 1121995 | Pivot Mount Bracket - 6" x 10" Standoff - Sloped                                   |
|      | 1121586 | Pivot Mount Bracket* - 6" x 6" Standoff - Sloped 17°                               |
|      | 1121587 | Pivot Mount Bracket* - 6" x 8" Standoff - Sloped 17°                               |
|      | 1121588 | Pivot Mount Bracket* - 6" x 10" Standoff - Sloped 17°                              |
| 9    | 1121992 | Pivot Mount Bracket - Sloped - 6"  |
| 10   | 1700400 | Self-Tapping Screw - 3/8" x 1"   |
| 11   | 1121583 | Pivot Backer Plate - 7" x 16"  |
|      | 1121584 | Pivot Backer Plate - 7" x 20"  |
|      | 1122040 | Pivot Backer Plate - 7" x 24"  |

\*Used on trailers with long, flat sloped front or rear.

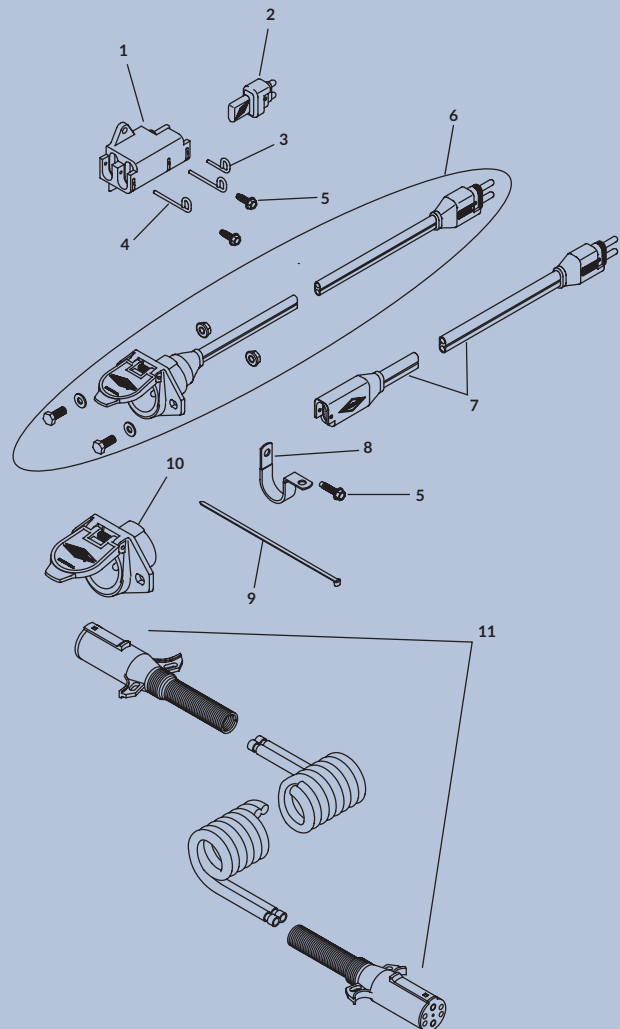


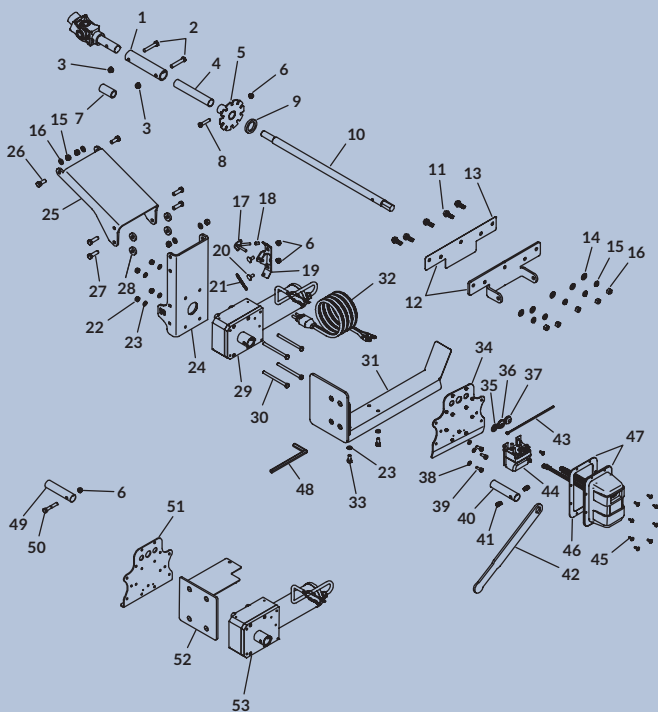
## 4500 SERIES HD – TRAILER WIRING KITS

| ITEM | PART #  | DESCRIPTION   |
|------|---------|---|
|      | 1122536 | Lead Trailer Wiring Kit* - SMARTwire™ - 4 Ga. - 33' Trailer [Includes 1; 2; 3; 6; 7; 2 of 4; 12 of 8; 14 of 5; 40 of 9] |
|      | 1122537 | Lead Trailer Wiring Kit* - SMARTwire™ - 4 Ga. - 42' Trailer [Includes 1; 2; 3; 6; 7; 2 of 4; 12 of 8; 14 of 5; 40 of 9] |
|      | 1122538 | Lead Trailer Wiring Kit* - SMARTwire™ - 4 Ga. - 50' Trailer [Includes 1; 2; 3; 6; 7; 2 of 4; 12 of 8; 14 of 5; 40 of 9] |
|      | 1122533 | Lead Trailer Wiring Kit** - SMARTwire™ - 4 Ga. - Combo 33' Trailer [Includes 6; 7; 12 of 5 & 8; 40 of 9]                |
|      | 1122534 | Lead Trailer Wiring Kit** - SMARTwire™ - 4 Ga. - Combo 42' Trailer [Includes 6; 7; 12 of 5 & 8; 40 of 9]                |
|      | 1122535 | Lead Trailer Wiring Kit** - SMARTwire™ - 4 Ga. - Combo 50' Trailer [Includes 6; 7; 12 of 5 & 8; 40 of 9]                |
|      | 1120849 | Junction Block Kit w/Harness Plug [Includes 1; 2; 3; 2 of 4 & 5]  |
| 1    | 1704695 | Harness Junction Block  |
| 2    | 1704717 | Wire Harness Rubber Plug  |
| 3    | 1704711 | Harness Lock Pin - Short  |
| 4    | 1704696 | Harness Lock Pin - Long   |
| 5    | 1704338 | Self-Tapping Screw - 1/4" x 1"  |
| 6    | 1122541 | SMARTwire™ Dual-Conductor Socket - 22'  |
|      | 1122542 | SMARTwire™ Dual-Conductor Socket - 32'  |
|      | 1122543 | SMARTwire™ Dual-Conductor Socket - 40'  |
| 7    | 1704888 | SMARTwire™ - 4 Ga. - Plug/Socket - 25'  |
| 8    | 1702108 | Wire Clip - 3/4" ID   |
| 9    | 1703231 | Cable Tie - 8"  |
| 10   | 1704978 | Dual-Conductor Housing - Female   |
| 11   | 1123957 | Coiled Wire w/Dual-Conductor Plugs - 4 Ga. x 15'  |
|      | 1123958 | Coiled Wire w/Dual-Conductor Plugs - 4 Ga. x 20'  |

\*Lead trailer wiring kit ties into either 4500 Series HD or hopper kits on lead trailer, which routes power to rear of lead trailer.

\*\*Lead trailer wiring kit ties into BOTH 4500 Series HD and hopper kits on lead trailer, which routes power to rear of lead trailer.





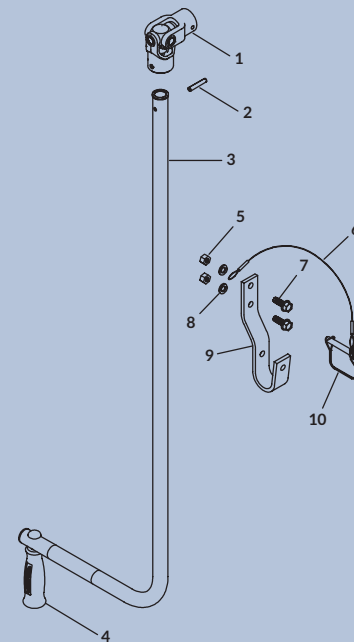
## AUTOTRAP™ – SMARTWIRE™ HOPPER OPENERS

| ITEM | PART #  | DESCRIPTION  |
|------|---------|--|
|      | 1123896 | Intermediate Bracket Hardware - Rail Mount<br>[Includes 2 of 26; 4 of 27 & 28; 6 of 15 & 16] |
|      | 1118253 | Hinge Bracket Hardware [Includes 2 of 2 & 27;<br>4 of 3; 5 of 11, 14, 15 & 16]               |
| 1    | 1123567 | Coupling - 1-3/8" x 6"   |
| 2    | 1704264 | Hex Head Cap Screw - 3/8" x 2"   |
| 3    | 1701580 | Nylon Lock Nut - 3/8"  |
| 4    | 1705226 | Adapter Bushing  |
| 5    | 1123565 | Manual Locking Gear  |
| 6    | 1700419 | Nylon Lock Hex Nut - 5/16"   |
| 7    | 1123569 | Shaft Adapter - 3/4" to 1"   |
| 8    | 1703487 | Hex Head Cap Screw - 5/16" x 1-1/2"  |
| 9    | 1118318 | Spacer Washer - 1/4" x 1.81 OD x 1.28"   |
| 10   | 1124697 | Drive Shaft - 27"  |
| 11   | 1700400 | Self-Tapping Screw - 3/8" x 1"   |
| 12   | 1118439 | Replacement Hinge Bracket  |
| 13   | 1118277 | Shim Insulator   |
| 14   | 1700429 | Flat Washer - 3/8"   |
| 15   | 1700434 | Lock Washer - 3/8"   |
| 16   | 1700407 | Hex Nut - 3/8"   |
| 17   | 1123557 | Locking Pin  |
| 18   | 1704276 | Protective Cap - 1/4" x 1/2"   |
| 19   | 1123554 | Locking Pin Bracket  |
| 20   | 1705231 | Carriage Bolt - 5/16" x 3/4" - GR5   |
| 21   | 1704904 | Extension Spring - 7/32" x .023" x 1-15/16"  |
| 22   | 1700411 | Hex Nut - 15/16"   |
| 23   | 1700433 | Lock Washer - 15/16"   |
| 24   | 1123553 | Motor Mount Bracket  |
| 25   | 1123895 | Intermediate Bracket - Rail Mount  |
| 26   | 1701061 | Hex Head Cap Screw - 3/8" x 1"   |
| 27   | 1702891 | Hex Head Cap Screw - 3/8" x 1-1/4"   |
| 28   | 1120291 | Spacer Washer - 1/4" x 1 OD" x .406"   |
| 29   | 1124591 | AutoTrap™/MaxxTrap™ Motor  |
| 30   | 1705230 | Hex Head Cap Screw - 5/16" x 4"  |
| 31   | 1124858 | Universal Debris Deflector   |
| 32   | 1704716 | SMARTwire™ - 6 Ga. x Plug x 1/4" Terminal - 10'  |
| 33   | 1701045 | Hex Head Cap Screw - 5/16" x 3/4"  |
| 34   | 1124846 | Universal Modular Control Bracket  |
| 35   | 1705258 | Button Plug - 11/16"   |
| 36   | 1704721 | Rubber Grommet w/Slot - .094" x 7/8"   |
| 37   | 1705115 | Push-In Rubber Grommet - 3/8" x 11/16"   |
| 38   | 1700436 | Lock Washer - 1/4"   |
| 39   | 1703959 | Hex Head Cap Screw - 1/4" x 3/4"   |
| 40   | 1705480 | Motor Bushing - 4"   |
| 41   | 1705476 | Soc Head Cap Screw - 3/8" x 1/2"   |
| 42   | 1123568 | Crank Handle   |
| 43   | 1703231 | Cable Tie - 8"   |
| 44   | 1704312 | Motor-Reversing Solenoid   |
| 45   | 1704308 | Flange Cap Screw - #10 x 1/2"  |
| 46   | 1704309 | Solenoid Cover Gasket  |
| 47   | 1126875 | SMART3™ Solenoid Cover w/Gasket  |
|      | 1123775 | SMART2™ Solenoid Cover w/Gasket  |
| 48   | 1705479 | Allen Wrench - 5/16" x 6"  |
| 49   | 1705088 | Motor Bushing* - 4-7/16"   |
| 50   | 1705083 | Hex Head Cap Screw* - 5/16" x 2" - GR8   |
| 51   | 1123562 | Modular Control Bracket*   |
| 52   | 1123563 | Debris Deflector*  |
| 53   | 1123475 | AutoTrap™ Motor*   |

\*Order these components if AutoTrap™ was purchased before 2016.

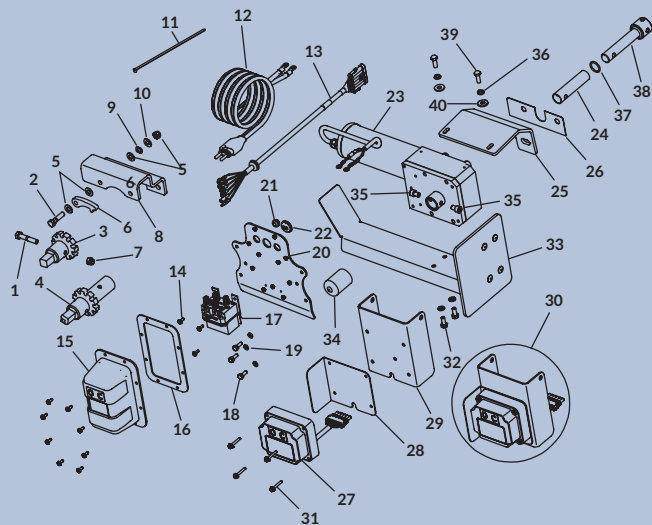
## MAXXTRAP™ – CRANK ARMS/CRANK RETAINERS

| ITEM | PART #  | DESCRIPTION   |
|------|---------|---|
|      | 1101929 | Offset Crank Retainer Kit<br>[Includes 6; 9; 10; 2 of 5, 7 & 8]       |
|      | 1107062 | Offset Crank Retainer Hardware Kit<br>[Includes 6; 10; 2 of 5, 7 & 8] |
|      | 1122729 | Override Crank [Includes 1; 2; 3]                                     |
| 1    | 1700527 | Econo U-Joint   |
| 2    | 1700445 | Spring Pin - 1/4" x 1-1/2"  |
| 3    | 1124947 | Crank Arm - 42"   |
| 4    | 1116110 | Crank Handle Kit (Handle - Washer - Nut)                              |
| 5    | 1700407 | Hex Nut - 3/8"  |
| 6    | 1100574 | Cable w/#5 Interlock Snap   |
| 7    | 1700400 | Self-Tapping Screw - 3/8" x 1"  |
| 8    | 1700434 | Lock Washer - 3/8"  |
| 9    | 1101930 | Offset J-Hook Crank Retainer  |
| 10   | 1700526 | Wire Lock Pin - 3/8" x 2-1/2"   |



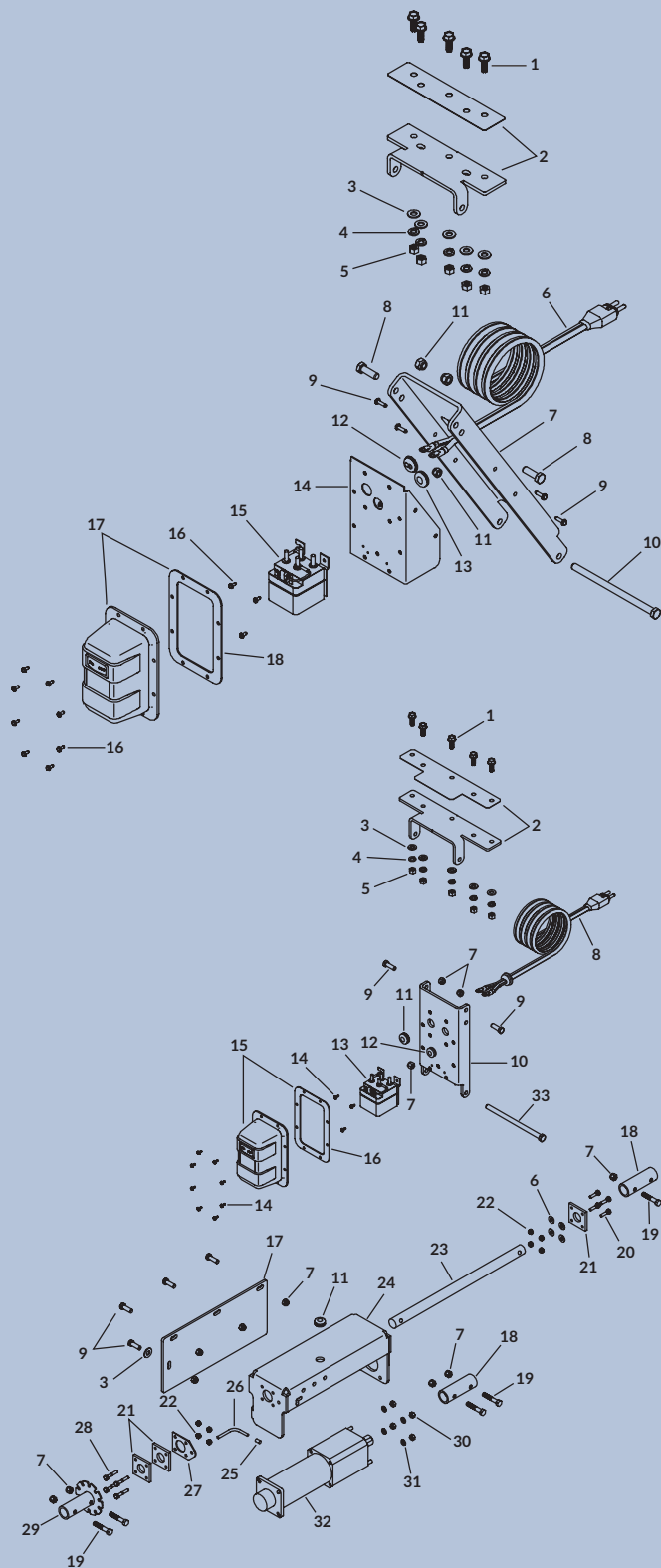
## MAXXTRAP™ – SMARTWIRE™ HOPPER OPENERS

| ITEM | PART #  | DESCRIPTION                                     |
|------|---------|---|
| 1    | 1705083 | Hex Head Cap Screw - 5/16" x 2" - GRB           |
| 2    | 1701434 | Hex Head Cap Screw - 3/8" x 1-1/2"              |
| 3    | 1705078 | Override Adapter - 1"                           |
|      | 1705077 | Override Adapter - 7/8"                         |
| 4    | 1124587 | Override Coupling                               |
| 5    | 1701176 | Flat Washer - 3/8" - SAE                        |
| 6    | 1705089 | Manual Override Pawl                            |
| 7    | 1704297 | Nylon Lock Nut - 5/16"                          |
| 8    | 1124583 | Manual Override Bracket - Wilson RP2            |
|      | 1124618 | Manual Override Bracket - Wilson G2             |
| 9    | 1705087 | Stainless Wave Washer - 3/8"                    |
| 10   | 1701580 | Nylon Lock Nut - 3/8"                           |
| 11   | 1703231 | Cable Tie - 8"                                  |
| 12   | 1704716 | SMARTwire™ - 6 Ga. x Plug x 1/4" Terminal - 10' |
| 13   | 1705257 | Cable Assembly - 7'                             |
| 14   | 1704308 | Flange Cap Screw - #10 x 1/2"                   |
| 15   | 1122717 | Dummy Solenoid Cover                            |
| 16   | 1704309 | Solenoid Cover Gasket                           |
| 17   | 1705408 | Motor-Reversing Solenoid                        |
| 18   | 1703959 | Hex Head Cap Screw - 1/4" x 3/4"                |
| 19   | 1700436 | Lock Washer - 1/4"                              |
| 20   | 1124846 | Universal Modular Control Bracket               |
| 21   | 1705101 | Rubber Grommet - 3/8" x 1/2"                    |
| 22   | 1704721 | Rubber Grommet w/Slot - .094" x 7/8"            |
| 23   | 1124591 | AutoTrap™/MaxxTrap™ Motor                       |
| 24   | 1705480 | Motor Bushing - 4"                              |
| 25   | 1122795 | Gearbox Bracket - GEN2*                         |
|      | 1123460 | Gearbox Bracket - STO*                          |
|      | 1124449 | Gearbox Bracket*                                |
|      | 1124564 | Gearbox Bracket - Wilson*                       |
|      | 1124628 | Gearbox Bracket - Original RRP*                 |
|      | 1125618 | Gearbox Bracket - MRT*                          |
| 26   | 1124566 | Gearbox Shim Insulator                          |
| 27   | 1122553 | SMART2™ Control Module                          |
| 28   | 1122655 | Mud Guard                                       |
| 29   | 1124321 | Modular Control Bracket                         |
| 30   | 1122750 | SMART2™ Control Module w/Mounting Bracket       |
| 31   | 1705412 | Flange Cap Screw - #10 x 1-1/2"                 |
| 32   | 1701045 | Hex Head Cap Screw - 5/16" x 3/4"               |
| 33   | 1124858 | Universal Debris Deflector                      |
| 34   | 1700789 | Protective Cap - 1.3" ID                        |
| 35   | 1705476 | Soc Head Cap Screw - 3/8" x 1/2"                |
| 36   | 1700433 | Lock Washer - 5/16"                             |
| 37   | 1705477 | O-Ring - 7/8" ID x 1-1/8" OD                    |
| 38   | 1705463 | Drive Shaft - 5-3/4"                            |
| 39   | 1705142 | Hex Head Cap Screw - 3/8" x 1"                  |
| 40   | 1700427 | Flat Washer - 1/4"                              |



\*Call w/year, make and model to determine correct bracket for your system.

NOTE: These are replacement parts for MaxxTraps purchased after 2016. For replacement parts for systems before 2016, please CALL. Be sure to have the year, make and model of your trailer ready.



## PROTRAP® – RAIL MOUNT ASSEMBLIES

| ITEM | PART #  | DESCRIPTION   |
|------|---------|---|
|      | 1118569 | Hinge Bracket Hardware* - Rail Mount<br>[Includes 10; 2 of 8; 5 of 1, 3, 4, 5 & 11] |
| 1    | 1700400 | Self-Tapping Screw - 3/8" x 1"  |
| 2    | 1119074 | Replacement Hinge Bracket - Rail Mount  |
| 3    | 1700429 | Flat Washer - 3/8"  |
| 4    | 1700434 | Lock Washer - 3/8"  |
| 5    | 1700407 | Hex Nut - 3/8"  |
| 6    | 1704716 | SMARTWire™ - 6 Ga. x Plug x 1/4" Terminal - 10'                                     |
| 7    | 1118527 | Intermediate Bracket - Rail Mount   |
| 8    | 1702904 | Hex Head Cap Screw - 3/8" x 1-1/8"  |
| 9    | 1704367 | Hex Flange Cap Screw - #10 x 3/4"   |
| 10   | 1703178 | Hex Head Cap Screw - 3/8" x 6-1/2"  |
| 11   | 1701580 | Nylon Lock Nut - 3/8"   |
| 12   | 1704721 | Rubber Grommet w/Slot - .094" x 7/8"  |
| 13   | 1704818 | Rubber Grommet - 1/2" x 1-1/16"   |
| 14   | 1120701 | Modular Control Bracket   |
| 15   | 1704312 | Motor-Reversing Solenoid  |
| 16   | 1704308 | Flange Cap Screw - #10 x 1/2"   |
| 17   | 1126874 | SMART3™ Solenoid Cover w/Gasket   |
|      | 1123082 | SMART2™ Solenoid Cover w/Gasket   |
| 18   | 1704309 | Solenoid Cover Gasket   |
|      | 1704378 | Dielectric Connector Protector (not shown)  |

\*Includes dielectric connector protector.

## PROTRAP® – SMARTWIRE™ HOPPER OPENERS

| ITEM | PART #  | DESCRIPTION   |
|------|---------|---|
|      | 1118253 | Hinge Bracket Hardware Kit*<br>[Includes 2 of 9 & 19; 4 of 7; 5 of 1, 3, 4 & 5] |
| 1    | 1700400 | Self-Tapping Screw - 3/8" x 1"  |
| 2    | 1118439 | Replacement Hinge Bracket   |
| 3    | 1700429 | Flat Washer - 3/8"  |
| 4    | 1700434 | Lock Washer - 3/8"  |
| 5    | 1700407 | Hex Nut - 3/8"  |
| 6    | 1700427 | Flat Washer - 1/4"  |
| 7    | 1701580 | Nylon Lock Nut - 3/8"   |
| 8    | 1704716 | SMARTWire™ - 6 Ga. x Plug x 1/4" Terminal - 10'                                 |
| 9    | 1702904 | Hex Head Cap Screw - 3/8" x 1-1/8"  |
| 10   | 1120623 | Intermediate Bracket - SMARTWire™   |
| 11   | 1704270 | Rubber Grommet - 1/2" x 11/16"  |
| 12   | 1704722 | Rubber Grommet w/Slot - 1/4" x 7/8"   |
| 13   | 1704312 | Motor-Reversing Solenoid  |
| 14   | 1704367 | Hex Flange Cap Screw - #10 x 3/4"   |
| 15   | 1126874 | SMART3™ Solenoid Cover w/Gasket   |
|      | 1123082 | SMART2™ Solenoid Cover w/Gasket   |
| 16   | 1704309 | Solenoid Cover Gasket   |
| 17   | 1118436 | Rock Flap [Includes Flap; 4 of 3, 7 & 9]  |
| 18   | 1118038 | Coupling - 1-3/8" x 4"  |
| 19   | 1704264 | Hex Head Cap Screw - 3/8" x 2"  |
| 20   | 1700381 | Hex Head Cap Screw - 1/4" x 1"  |
| 21   | 1118034 | Flange Bearing  |
| 22   | 1701543 | Nylon Lock Hex Nut - 1/4"   |
| 23   | 1118033 | Manual Shaft  |
| 24   | 1118026 | Motor Mount Bracket - Driver Side   |
|      | 1119141 | Motor Mount Bracket - Passenger Side  |
| 25   | 1704276 | Protective Cap - 1/4" x 1/2"  |
| 26   | 1118036 | Locking Pin   |
| 27   | 1118035 | Lock Retainer   |
| 28   | 1700377 | Hex Head Cap Screw - 1/4" x 1-1/2"  |
| 29   | 1118031 | Locking Coupling  |
| 30   | 1704389 | Hex Nut - 5/16"   |
| 31   | 1700433 | Lock Washer - 5/16"   |
| 32   | 1119072 | ProTrap® 150 Motor  |
|      | 1118400 | ProTrap® 250 Motor  |
| 33   | 1703178 | Hex Head Cap Screw - 3/8" x 6-1/2"  |
|      | 1704378 | Dielectric Connector Protector (not shown)                                      |

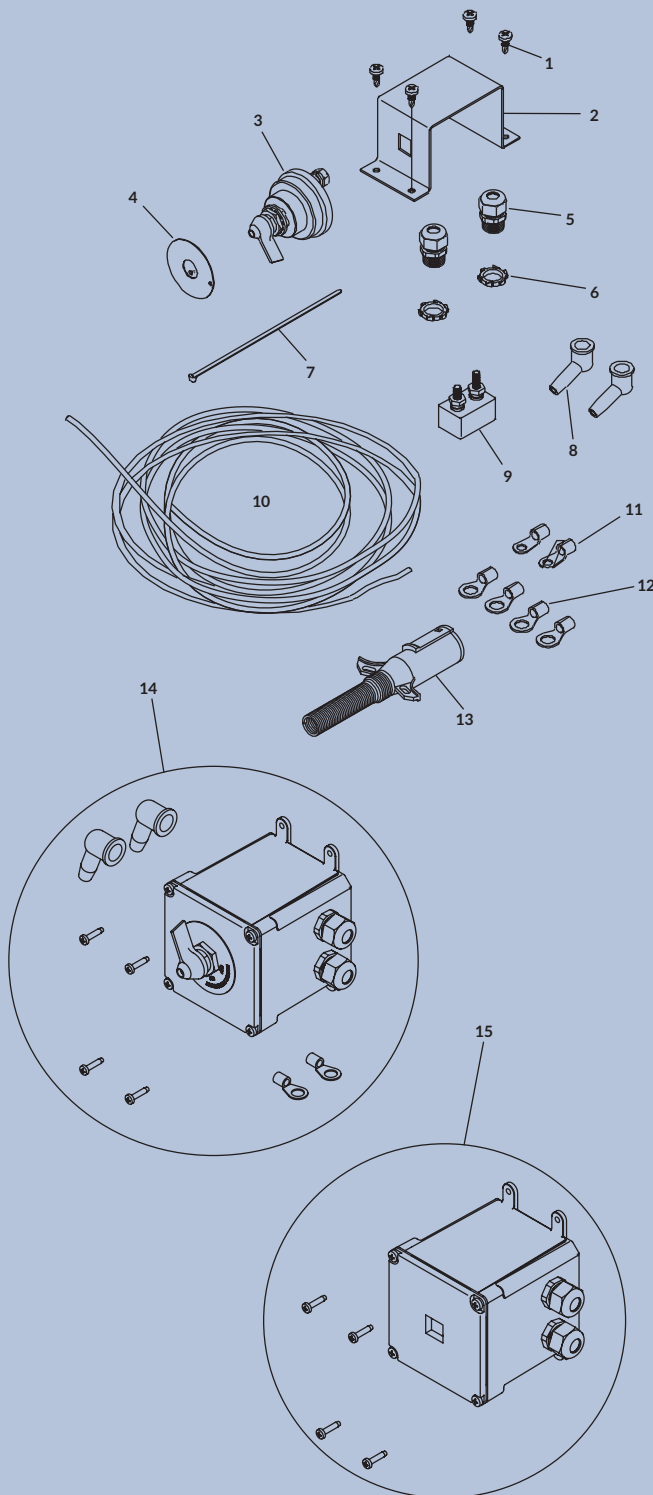
\*Includes dielectric connector protector.

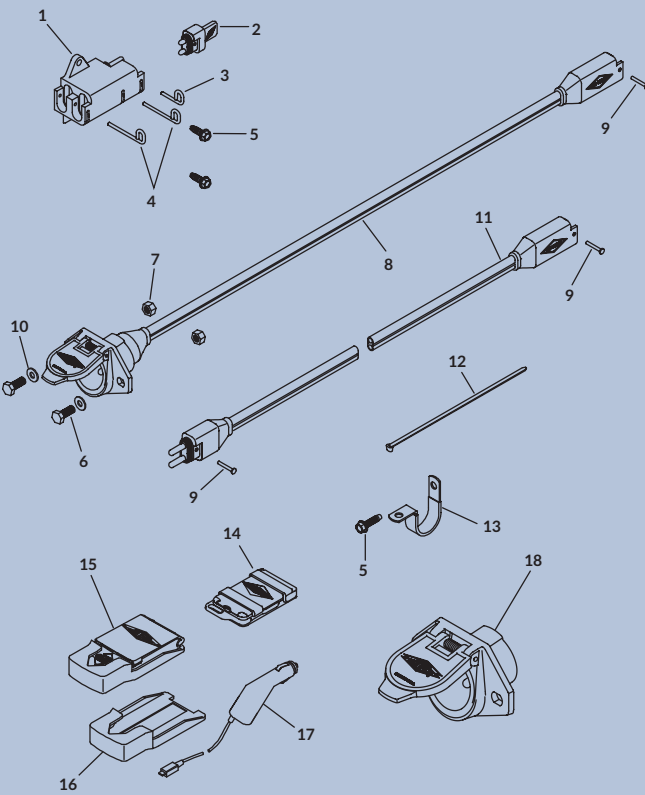
# AUTOTRAP™/MAXXTRAP™/PROTRAP® – CAB WIRING KITS

| ITEM | PART #  | DESCRIPTION   |
|------|---------|---|
|      | 1118417 | Cab Wiring Kit* - 6 Ga. - Master Disconnect - 30'<br>[Includes 2; 3; 4; 9; 10; 13; 2 of 5, 6, 8 & 11;<br>4 of 1 & 12; 15 of 7]    |
|      | 1125292 | Cab Wiring Kit - 6 Ga. - Master Disconnect<br>w/External Switch - 30' [Includes 4; 9; 10; 13; 14;<br>2 of 11; 4 of 12; 15 of 7]   |
|      | 1122725 | Cab Wiring Kit* - 4 Ga.** - Master Disconnect - 30'<br>[Includes 2; 3; 4; 9; 10; 13; 2 of 5, 6, 8 & 11;<br>4 of 1 & 12; 15 of 7]  |
|      | 1125293 | Cab Wiring Kit - 4 Ga.** - Master Disconnect<br>w/External Switch - 30' [Includes 4; 9; 10; 13; 14;<br>2 of 11; 4 of 12; 15 of 7] |
|      | 1125617 | Master Disconnect Switch Kit<br>[Includes 2; 3; 2 of 5, 6 & 8; 4 of 1]  |
|      | 1120466 | Master Disconnect Kit* - 10' [Includes 2; 3; 4;<br>9; 10; 2 of 5, 6, 8 & 11; 4 of 1 & 12; 15 of 7]                                |
|      | 1120467 | Master Disconnect Kit* - 30' [Includes 2; 3; 4;<br>9; 10; 2 of 5, 6, 8 & 11; 4 of 1 & 12; 15 of 7]                                |
|      | 1118325 | Mounting Bracket Hardware Kit<br>[Includes 2 of 5, 6 & 8; 4 of 1]   |
|      | 1118254 | Cab Wiring Hardware Kit - 6 Ga.<br>[Includes 4; 9; 2 of 11; 4 of 12; 15 of 7]   |
|      | 1122761 | Cab Wiring Hardware Kit - 4 Ga.**<br>[Includes 4; 9; 2 of 11; 4 of 12; 15 of 7]   |
| 1    | 1700398 | Self-Drilling Screw - 1/4" x 3/4"   |
| 2    | 1118323 | Disconnect Switch Mounting Bracket  |
| 3    | 1704283 | Battery Disconnect Rotary Switch  |
| 4    | 1704284 | Face Plate  |
| 5    | 1704152 | Dome Nut - 1/2"   |
| 6    | 1704187 | Lock Nut - 1/2"   |
| 7    | 1703231 | Cable Tie - 8"  |
| 8    | 1704330 | Rubber Insulating Boot  |
| 9    | 1704354 | 40-Amp Modified-Reset Circuit Breaker   |
| 10   | 1119077 | Dual-Conductor Wire - 6 Ga. - 10'   |
|      | 1118495 | Dual-Conductor Wire - 6 Ga. - 30'   |
|      | 1703822 | Dual-Conductor Wire - 6 Ga. - 259 Strand (per foot)   |
|      | 1705107 | Dual-Conductor Wire - 4 Ga. - 133 Strand (per foot)   |
| 11   | 1703245 | Ring Terminal - 6 Ga. x #10 Stud - Motor/Breaker  |
|      | 1705106 | Ring Terminal - 4 Ga.** x #10 Stud - Motor/Breaker  |
| 12   | 1703244 | Ring Terminal - 6 Ga. x 3/8" Stud - Battery   |
|      | 1705105 | Ring Terminal - 4 Ga.** x 3/8" Stud - Battery   |
| 13   | 1115385 | Heavy-Duty Dual-Conductor Plug  |
| 14   | 1125214 | External Master Disconnect Switch   |
| 15   | 1125291 | External Master Disconnect Switch Kit   |
|      | 1704378 | Dielectric Connector Protector (not shown)  |

\*Includes dielectric connector protector.

\*\*AutoTrap™ and MaxxTrap™ use 4-gauge wire.



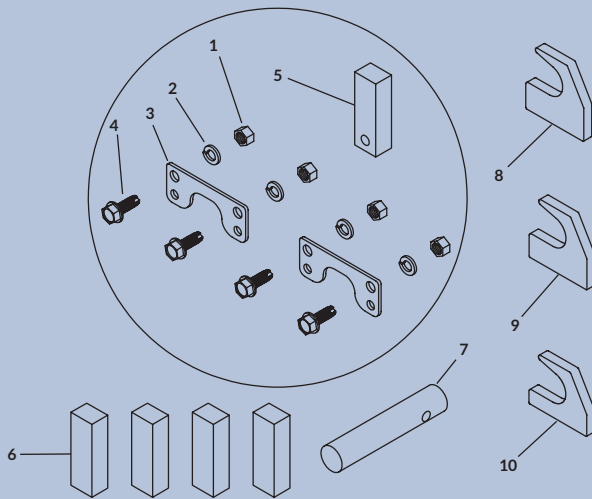


## AUTOTRAP™/MAXXTRAP™/PROTRAP® – SMARTWIRE™ ELECTRICAL

| ITEM                         | PART #  | DESCRIPTION  |
|------------------------------|---------|--|
| <b>SMARTwire™ COMPONENTS</b> |         |  |
|                              | 1120849 | Junction Block Kit w/Harness Plug<br>[Includes 1; 2; 3; 2 of 4 & 5]            |
|                              | 1120848 | Junction Block Kit w/o Harness Plug<br>[Includes 1; 3; 2 of 4 & 5]             |
|                              | 1125580 | SMARTwire™ Dual-Conductor Socket w/Hardware<br>[Includes 8; 9; 2 of 6, 7 & 10] |
|                              | 1120851 | Wiring Retaining Hardware w/Locking Pin*<br>[Includes 9; 4 of 5 & 13]          |
|                              | 1120906 | Wiring Retaining Hardware* [Includes 4 of 5 & 13]                              |
| 1                            | 1704695 | Harness Junction Block   |
| 2                            | 1704717 | Wire Harness Rubber Plug   |
| 3                            | 1704711 | Harness Lock Pin - Short   |
| 4                            | 1704696 | Harness Lock Pin - Long  |
| 5                            | 1704338 | Self-Tapping Screw - 1/4" x 1"   |
| 6                            | 1701045 | Hex Head Cap Screw - 5/16" x 3/4"  |
| 7                            | 1704946 | Top Lock Flange Nut - 5/16"  |
| 8                            | 1120670 | SMARTwire™ Dual-Conductor Socket - 6 Ga. x 3'6"                                |
|                              | 1126944 | SMARTwire™ Dual-Conductor Socket - 4 Ga. x 3'6"                                |
| 9                            | 1704751 | Harness Lock Pin - 1/4" x 7/8"   |
| 10                           | 1700427 | Flat Washer - 1/4"   |
| 11                           | 1704874 | SMARTwire™ - 6 Ga. - Plug/Socket - 8'  |
|                              | 1704827 | SMARTwire™ - 6 Ga. - Plug/Socket - 16'   |
|                              | 1704704 | SMARTwire™ - 6 Ga. - Plug/Socket - 25'   |
|                              | 1704888 | SMARTwire™ - 4 Ga.** - Plug/Socket - 25'                                       |
|                              | 1705108 | SMARTwire™ - 4 Ga.** - Plug/Socket - 30'                                       |
| 12                           | 1703231 | Cable Tie - 8"   |
| 13                           | 1702108 | Wire Clip - 3/4" ID  |
|                              | 1704378 | Dielectric Connector Protector (not shown)                                     |
| <b>REMOTES</b>               |         |  |
| 14                           | 1126867 | SMART3™ Remote - Grain Trailer   |
|                              | 1705903 | Caribiner Key Strap (not shown)  |
|                              | 1122108 | SMART2™ Remote w/Cradle/Charging Cable<br>[Includes 15; 16; 17]                |
| 15                           | 1122231 | SMART2™ Remote w/Cradle  |
| 16                           | 1124305 | SMART2™ Remote Cradle  |
| 17                           | 1704958 | SMART2™ Charging Cable   |
| 18                           | 1704978 | Dual Conductor Housing - Female  |

\*Includes dielectric connector protector.

\*\* AutoTrap™ and MaxxTrap™ use 4-gauge SMARTwire™.



## AUTOTRAP™/PROTRAP® – TRAILER MOUNTS

| ITEM                           | PART #  | DESCRIPTION  |
|--------------------------------|---------|--|
| <b>FOR DAKOTA TRAILERS</b>     |         |  |
|                                | 1118337 | Hopper Parts Kit* [Includes 5; 2 of 3; 4 of 1, 2 & 4]    |
| 1                              | 1700407 | Hex Nut - 3/8"   |
| 2                              | 1700434 | Lock Washer - 3/8"                                       |
| 3                              | 1118305 | Bearing Retainer   |
| 4                              | 1700400 | Self-Tapping Screw - 3/8" x 1"                           |
| 5                              | 1118306 | Door Stop - 3" x 1"                                      |
| <b>FOR TIMPTE TRAILERS</b>     |         |  |
|                                | 1118338 | Hopper Parts Kit* [Includes 4 of 6]                      |
| 6                              | 1118307 | Door Stop - 3" x 1"                                      |
| <b>FOR CORNHUSKER TRAILERS</b> |         |  |
|                                | 1118339 | Hopper Parts Kit* [Includes 7]                           |
| 7                              | 1118308 | Adapter Shaft  |
| <b>FOR NEVILLE TRAILERS</b>    |         |  |
|                                | 1118872 | Hopper Parts Kit* [Includes 4 of 8]                      |
| 8                              | 1120472 | Stop Hook - 1"   |
| <b>HIGH HOOKS</b>              |         |  |
|                                | 1118870 | Hopper Parts Kit* - High [Includes 4 of 9]               |
| 9                              | 1118585 | Stop Hook - 1-1/8"                                       |
| <b>HIGH &amp; LOW HOOKS</b>    |         |  |
|                                | 1118871 | Hopper Parts Kit* - High & Low<br>[Includes 4 of 9 & 10] |
| 10                             | 1118745 | Stop Hook - 5/8"   |

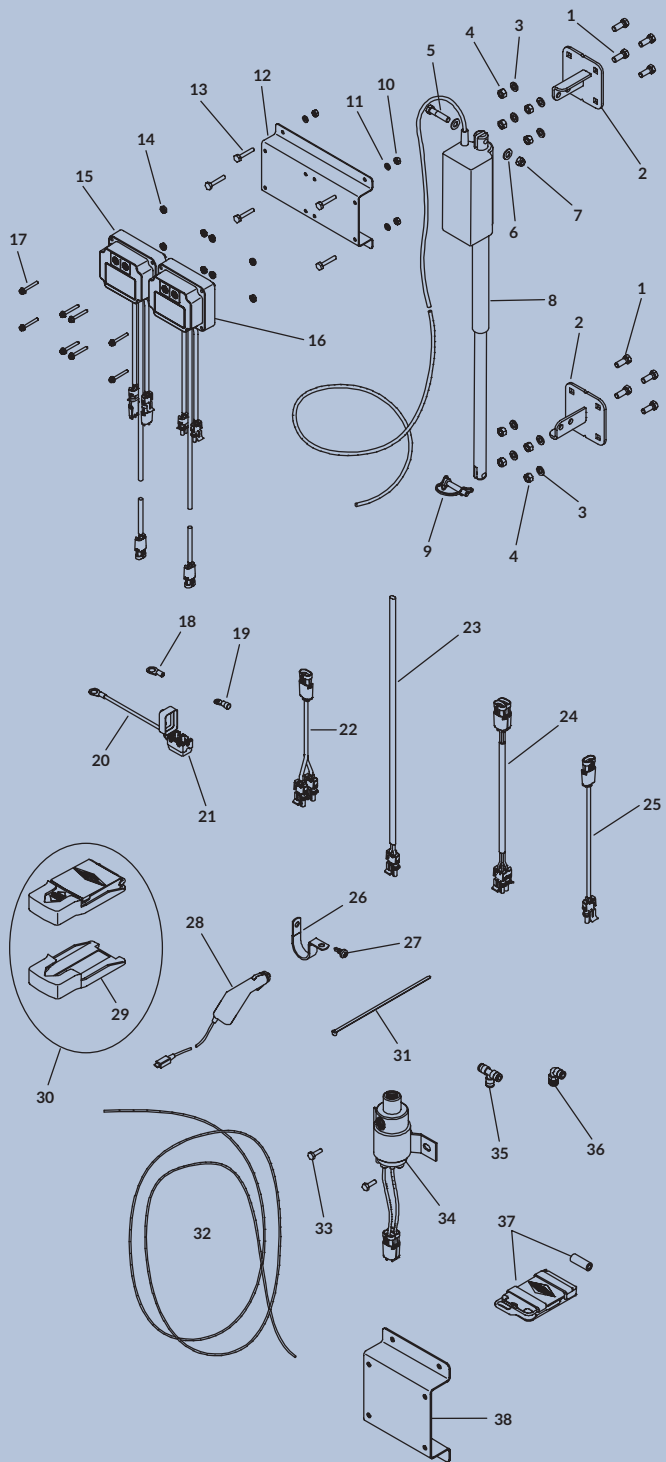
\*Includes instructions.

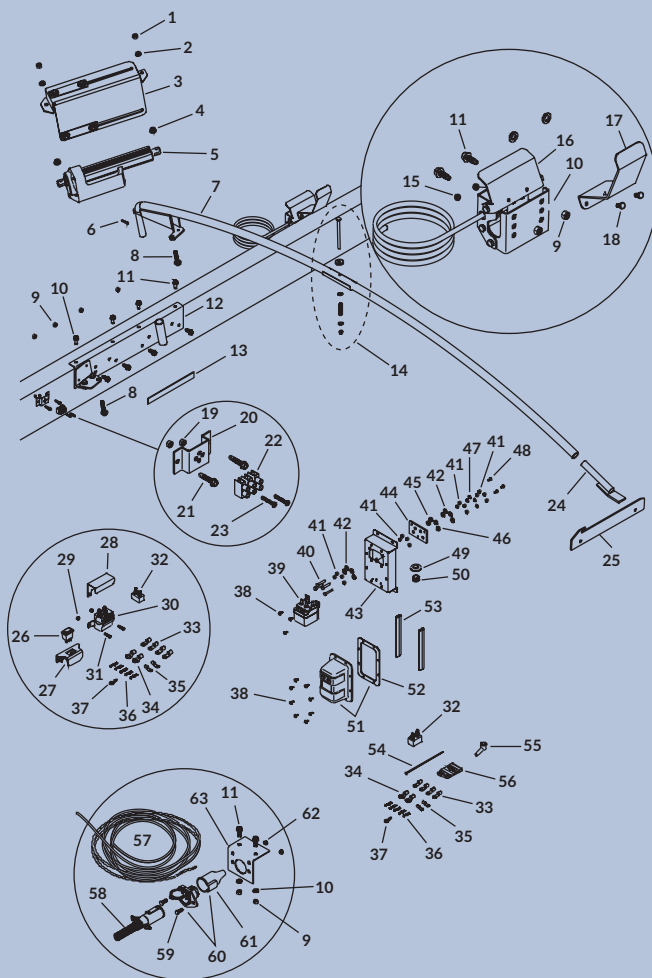
## ELECTRIC GATE/ELECTRIC HOIST

| ITEM | PART #  | DESCRIPTION  |
|------|---------|--|
|      | 1124614 | Air Fitting Hardware [Includes 4 of 35 & 36]   |
|      | 1124615 | Gate/Hoist Hardware [Includes 5; 7; 9; 2 of 6; 4 of 13, 27 & 33; 8 of 1, 3, 4, 10, 11, 14 & 17; 10 of 26 & 27; 40 of 31] |
|      | 1123212 | Wire Retaining Hardware [Includes 10 of 26 & 27]   |
| 1    | 1705475 | Elevator Bolt - 3/8" x 1"  |
| 2    | 1124588 | Actuator Mounting Bracket  |
| 3    | 1700434 | Lock Washer - 3/8"   |
| 4    | 1700407 | Hex Nut - 3/8"   |
| 5    | 1700369 | Hex Head Cap Screw - 3/8" x 1-3/4"   |
| 6    | 1701176 | Flat Washer - 3/8" - SAE   |
| 7    | 1701580 | Nylon Lock Nut - 3/8"  |
| 8    | 1124866 | Gate Actuator - 12 Stroke  |
| 9    | 1704427 | Wire Lock Pin - 3/8" x 1-3/4"  |
| 10   | 1700408 | Hex Nut - 1/4"   |
| 11   | 1700436 | Lock Washer - 1/4"   |
| 12   | 1124231 | Control Module Mounting Bracket  |
| 13   | 1700381 | Hex Head Cap Screw - 1/4" x 1"   |
| 14   | 1702653 | Machine Screw Nut  |
| 15   | 1124669 | SMART2™ Control Module - Momentary - Open/Closed   |
|      | 1126890 | SMART3™ Control Module - Momentary - Open/Closed   |
| 16   | 1125225 | SMART2™ Control Module - Momentary - Up/Down   |
|      | 1126894 | SMART3™ Control Module - Momentary - Up/Down   |
| 17   | 1705412 | Flange Cap Screw - #10 x 1-1/2"  |
| 18   | 1705491 | Ring Terminal - 10-12 Ga. x 3/8" Stud  |
| 19   | 1704173 | Ring Terminal - 10-12 Ga. x #10 Stud   |
| 20   | 1124613 | Power Wire w/Circuit Breaker   |
| 21   | 1705513 | 6-Amp Modified-Reset Circuit Breaker   |
| 22   | 1122705 | Output Splitter w/Weather Pack   |
| 23   | 1124454 | Power Cable  |
| 24   | 1124455 | Hoist Control Cable  |
| 25   | 1122704 | Extension Cable w/Weather Pack - 20'   |
| 26   | 1702108 | Wire Clip - 3/4" ID  |
| 27   | 1704338 | Self-Tapping Screw - 1/4" x 1"   |
|      | 1700398 | Self-Drilling Screw - 1/4" x 3/4"  |
| 28   | 1704958 | SMART2™ Charging Cable   |
| 29   | 1124305 | SMART2™ Remote Cradle  |
| 30   | 1122231 | SMART2™ Remote w/Cradle  |
|      | 1122108 | SMART2™ Remote w/Cradle/Charging Cable [Includes 28; 30]   |
| 31   | 1703231 | Cable Tie - 8"   |
| 32   | 1705466 | Air Break Tube - 1/4"  |
| 33   | 1704343 | Hex Head Cap Screw - 1/4" x 1-1/2"   |
| 34   | 1124867 | Solenoid Air Valve - 3 Way   |
| 35   | 1705516 | Air Fitting - Union Tee - 1/4"   |
| 36   | 1705515 | Air Fitting - 90° Male Elbow - 1/4"  |
| 37   | 1126867 | SMART3™ Remote   |
| 38   | 1125081 | Receiver Bracket - Mini Module - Farm  |
|      | 1704569 | Carabiner Key Strap (not shown)  |

\*Item 12 is optional; use with items 10, 11 and 13.

\*\*If item 8 (P/N 1124866) is purchased to be used with a non-Shur-Co® product, then item 21 (P/N 1705513) MUST also be purchased or warranty for gate actuator is void.





## ELECTRIC TURNING POINT™ BOW

| ITEM | PART #  | DESCRIPTION   |
|------|---------|---|
|      | 1117641 | Electrical Parts Kit w/Rocker Switch* - 25-Amp Auto Rest [Includes 20; 22; 26; 27; 28; 30; 32; 37; 2 of 19, 23, 29, 31, 34 & 35; 4 of 21 & 33; 5 of 36] |
|      | 1126888 | SMART3™ Receiver Kit w/Remote* - Turning Point™** [Includes 20; 22; 32; 2 of 19, 23, 34 & 35; 4 of 21, 33, 38, 39, 40 & 41]                             |
|      | 1109016 | Two-Pole Connector w/Hardware - Vertical Pin [Includes 54; 58; 60; 61; 2 of 9, 10, 11, 42, 59 & 62]   |
| 1    | 1704181 | Hex Nut - M12 x 1-3/4   |
| 2    | 1700437 | Lock Washer - 1/2"  |
| 3    | 1117633 | Actuator Shield   |
| 4    | 1704180 | Flange Locking Nut - M12 x 1-3/4  |
| 5    | 1704130 | Electric Linear Actuator  |
| 6    | 1701118 | Spring Pin - 1/4" x 1-3/16"   |
| 7    | 1117623 | Electric Turning Point™ Bow - 8" Rise   |
|      | 1117622 | Electric Turning Point™ Bow - 12" Rise  |
| 8    | 1704179 | Hex Flange Cap Screw - M12 x 60   |
| 9    | 1700407 | Hex Nut - 3/8"  |
| 10   | 1700434 | Lock Washer - 3/8"  |
| 11   | 1700400 | Self-Tapping Screw - 3/8" x 1"  |
| 12   | 1117628 | Bow Pivot Bracket   |
| 13   | 1107006 | Pivot Bracket Spacer  |
| 14   | 1110368 | Bow Attachment Spring Assembly  |
| 15   | 1704185 | Nylon Lock Nut - 1/4"   |
| 16   | 1117637 | Limit Switch  |
| 17   | 1117643 | Contact Bracket Offset Adapter  |
| 18   | 1703960 | Hex Head Cap Screw - 1/4" x 1/2"  |
| 19   | 1704184 | Nylon Lock Hex Nut - #6-32  |
| 20   | 1117647 | Terminal Block Mounting Bracket   |
| 21   | 1701471 | Self-Drilling Screw - #12 x 1"  |
| 22   | 1704190 | 3-Circuit Terminal Block  |
| 23   | 1704191 | Machine Screw - 6-32 x 7/8"   |
| 24   | 1105333 | Bow Rest - 8" Rise  |
|      | 1105327 | Bow Rest - 12" Rise   |
| 25   | 1105314 | Bow Stop  |
| 26   | 1116020 | Rocker Switch   |
| 27   | 1703661 | Rocker Switch Mounting Bracket  |
| 28   | 1703896 | Solenoid Cover  |
| 29   | 1701543 | Nylon Lock Hex Nut - 1/4"   |
| 30   | 1703845 | Motor-Reversing Solenoid  |
| 31   | 1700381 | Hex Head Cap Screw - 1/4" x 1"  |
| 32   | 1704126 | 25-Amp Auto-Reset Circuit Breaker   |
| 33   | 1704177 | Ring Terminal - 8 Ga. x 1/4" Stud   |
| 34   | 1704174 | Ring Terminal - 8 Ga. x 3/8" Stud   |
| 35   | 1704175 | Ring Terminal - 8 Ga. x #10 Stud  |
| 36   | 1703659 | Push-On Terminal - 14 Ga. x 1/4" - Switch/Solenoid  |
| 37   | 1704153 | Ring Terminal - 14 Ga. x 1/4" Stud  |
| 38   | 1702926 | Hex Head Cap Screw - 5/16" x 7/8"   |
| 39   | 1704312 | Motor-Reversing Solenoid  |
| 40   | 1704343 | Hex Head Cap Screw - 1/4" x 1-1/2"  |
| 41   | 1700408 | Hex Nut - 1/4"  |
| 42   | 1700427 | Flat Washer - 1/4"  |
| 43   | 1118296 | Modular Control Bracket   |
| 44   | 1118297 | Insulating Plate  |
| 45   | 1118037 | Plastic Washer - Black  |
| 46   | 1118250 | Plastic Washer - Orange   |
| 47   | 1700436 | Lock Washer - 1/4"  |
| 48   | 1704308 | Flange Cap Screw - #10 x 1/2"   |
| 49   | 1703282 | Rubber Grommet - 1-1/4" Insert  |
| 50   | 1701595 | End Plug - 1"   |
| 51   | 1126881 | SMART3™ Solenoid Cover w/Gasket   |
| 52   | 1704309 | Solenoid Cover Gasket   |
| 53   | 1704369 | Trim Seal (per foot)  |
| 54   | 1703231 | Cable Tie - 8"  |
| 55   | 1704330 | Rubber Insulating Boot  |
| 56   | 1126867 | SMART3™ Remote  |
| 57   | 1117654 | Dual-Conductor Wire - 8 Ga. - 30'   |
|      | 1117653 | Dual-Conductor Wire - 8 Ga. - 50'   |
|      | 1117652 | Dual-Conductor Wire - 8 Ga. - 75'   |
|      | 1117651 | Dual-Conductor Wire - 8 Ga. - 100'  |
|      | 1704125 | Dual-Conductor Wire - 8 Ga. (per foot)  |
| 58   | 1115385 | Heavy-Duty Dual-Conductor Plug  |
| 59   | 1701045 | Hex Head Cap Screw - 5/16" x 3/4"   |
| 60   | 1119557 | HD Dual-Conductor Socket w/Boot - Vertical Pin  |
| 61   | 1704573 | Sealing Boot - Socket Half Dual-Conductor   |
| 62   | 1704946 | Top Lock Flange Nut - 5/16"   |
| 63   | 1109015 | Conductor Plug Mounting Bracket   |
|      | 1704378 | Dielectric Connector Protector (not shown)  |

\*Includes dielectric connector protector.

\*\*SMART3™ receiver kit does NOT include SMARTwire™ and will NOT operate in Express Mode.

## ORDERS

All orders are subject to written acceptance by Shur-Co®, LLC, PO Box 713, 2309 Shur-Lok Street, Yankton, South Dakota 57078-0713, USA. We are required by law to collect sales tax and F.E.T. taxes on products shipped to states where applicable. If tax exempt, a copy of your tax exempt certificate must accompany your order.

## EXPEDITE/CANCELLATION/CHANGE FEES

In-stock parts orders placed by 10:00 a.m. (Central Time) normally ship the same day. (This varies with quantity/size of the order.) Standard lead time on tarps and hardware kits is generally five (5) to seven (7) working days; however, if you request that your order of tarps, hardware kits and/or complete tarp systems be expedited earlier than the normal lead time, there will be an extra charge of \$25. This fee is in addition to shipping and handling charges. Any change will generate an additional charge of \$25, and a cancellation will generate a 15 percent restocking fee. Lastly, once an order is in production, no changes can be made – the order is then considered final.

NOTE: We have no control over delivery dates – only ship dates.

## SHIPPING

All orders are shipped F.O.B. from Shur-Co®, LLC, Yankton, SD; Stuart, FL; Fort Dodge, IA; Caldwell, ID; Decatur, IL; Lexington, MI; West Fargo, ND; Ravenna, OH; Brantford, Ontario, Canada; or Rochester, Kent, UK. No full freight will be allowed and no prepaid shipment accepted unless quoted and approved in writing prior to acceptance of order. All shipments are made by the most reasonable means in accordance with size and weight of order, unless specific routing instructions are furnished by customer. Shipments are made daily via U.P.S. and common carrier. Claims for shortages must be made within 10 days. Claims for damages or loss in transit must be made with the carrier. No collect calls will be accepted. To ensure delivery, we need your full street address and phone number. When you receive your shipment, examine it carefully. Be sure that all cartons listed on the delivery sheet are present and accounted for. Large items, like steel tubing, may be packaged separately. If a carton is damaged, open it and inspect contents before signing for delivery. If merchandise is damaged, describe the damage on the delivery receipt. Failure on your part to document damaged or missing merchandise on the delivery receipt releases carrier of liability; repair or replacement will be the customer's responsibility.

## CREDIT TERMS

Shipments are made on a cash basis – no C.O.D.s. We accept American Express, Discover, VISA, MasterCard and checks by phone or mail. Prices subject to change without notice.

## WARRANTY

We warrant that all new products are free from defects in materials and workmanship.\* Warranty is effective if products are properly installed and used for the purpose for which they were intended and applies to original buyer only. Except as set forth above or as set forth in any product-specific warranty documentation, we make no other warranties, express or implied, including, but not limited to, warranties of merchantability or fitness for a particular use.

## WARRANTY Continued

Returns for warranty must be accompanied by a Return Merchandise Authorization number (RMA#), obtained by calling Customer Service at 866-748-7435, and sent, with freight paid by us, to Shur-Co®, LLC, 2309 Shur-Lok Street, PO Box 713, Yankton, SD 57078-0713, USA. Products returned without an RMA# will be refused. When we issue the RMA#, we will also issue a call tag to have UPS (or other freight company) pick up the product. C.O.D. warranty returns will not be accepted. We will pay no storage charges for a warranty product return prior to pickup by us or the freight company. If a warranty product return is scheduled to be picked up by us, we will do so at our earliest convenience.

If the product returned is found, in our judgement, to be defective in material or workmanship, our obligation under this warranty is limited to repair or replacement of the product, which will be made by us. Repair or replacement will be at our discretion, with replacements being made using current products performing the equivalent function. Labor charges other than those incurred at our factory or customer-owned service location (see back cover for a listing of facilities), including, but not limited to, any labor to install a repaired or replacement product, are not covered under this warranty. All and any expenses associated with delivering defective products to our factory and delivering repaired or replacement products from our factory to the owner will be paid by us.

If the product returned is found, in our judgement, to be non-warrantable, the owner will be contacted to authorize repair, the purchase of a replacement product or return of the product, all of which will be at the owner's expense. Payment authorization must be received by us before any non-warrantable product is repaired, replaced or returned. All expenses associated with delivering the repaired non-warrantable product from our factory to the owner will be paid by the owner.

In no event will we be liable for damages of any kind to person, product or property, including, but not limited to, indirect, incidental, special, consequential or punitive damages, or damages for loss of profits or revenue, even if we have been advised of the possibility of such damages. There are no warranties for used products or products that have been repaired, altered, modified or subjected to misuse, negligence or accident. We will not repair or replace products that fail or malfunction due to ordinary wear and tear, except as expressly provided in a product-specific warranty. The use of non-Shur-Co®, LLC parts in conjunction with our products will void the product warranty.

\*Certain products have specific warranties that differ from this warranty, i.e. motors and electronics. Product-specific warranty documentation is available for these items. In the event of a conflict between this warranty and a product-specific warranty, the product-specific warranty will govern. SEE THE FULL LISTING OF SHUR-CO® PATENTS ON OUR WEBSITE: [shurco.com/patents](http://shurco.com/patents).

## RETURN POLICY

All sales are final. See WARRANTY section at left and above for information on warranty returns.

NOTE: No person is authorized to modify the foregoing conditions of sale whatsoever. All product listings, sizes, weights and manufacturing details in this catalog are subject to change without notice.

Copyright 2019 Shur-Co®, LLC

**NEW!**

POWER KIT ASSEMBLED

NO NEED  
TO OPEN  
TRUCK HOOD

## "QUICK-DISCONNECT" CONNECTIONS TO MAKE YOUR LIFE EASIER

### SHUR-CO® SERVICE TRUCK POWER KITS

Putting power where you need it – fast, easy and extremely convenient! Sealed connectors stand up to adverse weather conditions. Ideal to use on the farm or at the elevator.

**Mounts on vehicle grill or other convenient location.**

P/N 1128064 – **SERVICE TRUCK POWER KIT**

- 4-Ga. Wire, 12' Long
- Includes High-Quality Manual Reset Circuit Breaker

**Provides power to trailers with horizontal or vertical power sockets.**

P/N 1128065 – **HEAVY-DUTY 2-WAY CONDUCTOR PLUG**

- 6- Ga. Wire, 10' Long
- Use with P/N 1128064

**Ideal for farm machinery that may require frequent jump starts.**

P/N 1128066 – **HEAVY-DUTY 2-WAY CONDUCTOR SOCKET**

- 6-Ga. Wire, 3'6" Long
- Permanent and Convenient – Includes Mounting Bracket
- Can Also be Installed on Winches or Other 12V Motors
- Use with P/N 1128064 and P/N 1128065

**Sealed SMARTWire™ connection between jumper cables/service truck.**

P/N 1128067 – **JUMPER CABLE KIT**

- 4-Ga. Wire, 12' Long
- High-Quality, Insulated Cable Clamps
- Use with P/N 1128064

**Extends reach from service truck to accessories.**

**EXTENSION CABLES**

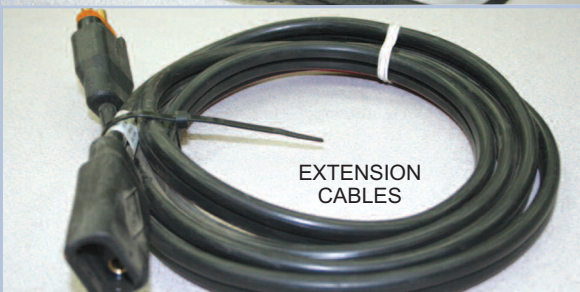
- 4-Ga. Wire
- Use with P/N 1128064, Accessory 1128065 or Jumper Cable Kit 1128067

P/N 1128099 - 8'

P/N 1128100 - 12'

P/N 1128101 - 16'

P/N 1128102 - 20'





SHUR-CO® OF FL, IA AND MI  
DO NOT OFFER INSTALL SERVICE

## SALES, INSTALLATIONS, PARTS AND REPAIRS

Corporate Offices/Outlet Store  
**SHUR-CO® of SOUTH DAKOTA**  
2309 Shur-Lok St., Yankton  
**800.474.8756**  
FAX: 605.665.0501

**SHUR-CO® of FLORIDA**  
3353 SE Gran Park Way, Stuart  
**800.327.8287**  
FAX: 772.287.0431

**SHUR-CO® of IDAHO**  
610 N. 16th Ave., Caldwell  
**208.455.1046**  
FAX: 208.455.1046

**SHUR-CO® of ILLINOIS**  
3993 E. Mueller Ave., Decatur  
**866.356.0246**  
FAX: 217.877.8270

**SHUR-CO® of IOWA**  
3839 Midway Blvd., Fort Dodge  
**866.356.0245**  
FAX: 515.576.5578

**SHUR-CO® of MICHIGAN**  
5100 Lakeshore Dr., Lexington  
**800.327.8287**  
FAX: 772.287.0431

**SHUR-CO® of NORTH DAKOTA**  
1746 4th Ave. NW, West Fargo  
**877.868.4488**  
FAX: 701.277.1283

**SHUR-CO® of OHIO**  
1100 N. Freedom,  
State Rt. 88 & 14, Ravenna  
**866.356.0242**  
FAX: 330.297.5599

**SHUR-CO® UK Limited**  
Rochester Airport Est., Unit 8  
27-43 Laker Rd.  
Rochester, Kent ME1 3EZ

*ShurTite™ Service Centers*

**SHUR-CO® of CANADA**  
490 Elgin St., Unit #1  
Brantford, Ontario N3S 7P8  
**800.265.0823**  
FAX: 519.751.3997

**SHUR-CO® of SIOUX FALLS**  
47184 258th St., Suite B  
Sioux Falls, South Dakota  
**844.573.9322**  
FAX: 605.543.5469

**SHUR-CO® of ILLINOIS**  
**866.356.0246**

**SHUR-CO® of OHIO**  
**866.356.0242**



JOIN US ON OUR SOCIAL NETWORK!