

# BOX DETAIL SHEET FOR LIVE-BOTTOM TRAILERS

CORRECT PHYSICAL MEASUREMENTS ARE ESSENTIAL FOR PROPER TARP FIT. PROVIDE ALL REQUESTED INFORMATION OR YOUR ORDER MAY BE DELAYED. **DO NOT USE** UNIVERSAL BOX SIZES. **ALWAYS** USE ACTUAL MEASUREMENTS. BOX SIZE AND FINISHED TARP SIZE ARE **NOT** THE SAME.

FIGURE 1

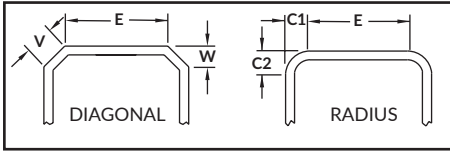
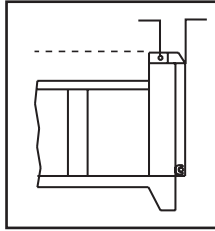
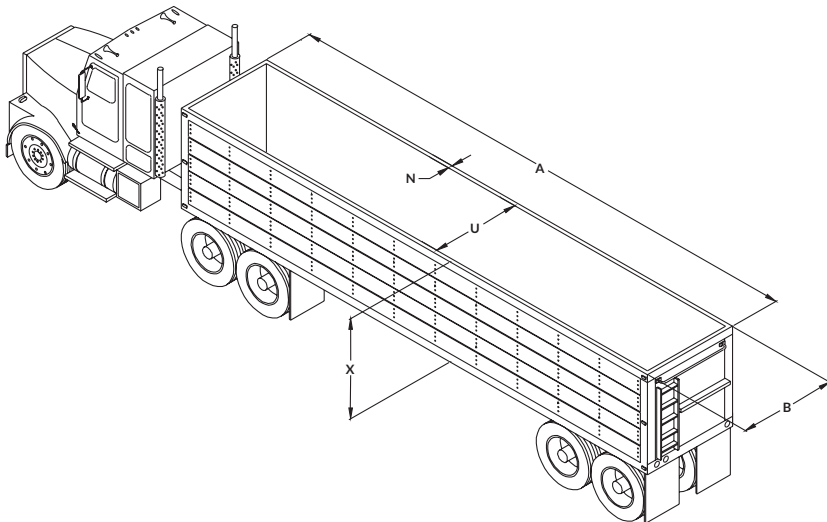
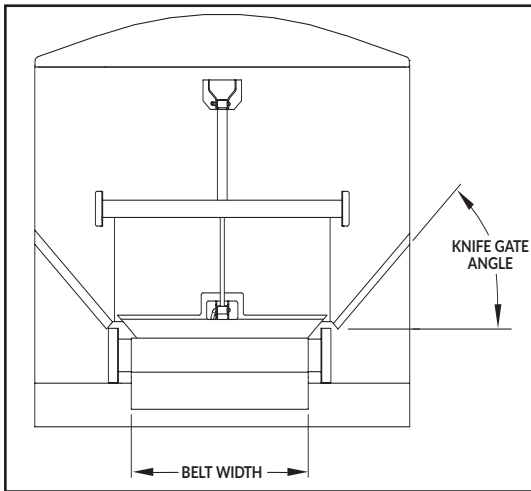


FIGURE 2



To measure radius corners correctly, place a carpenter's square on the front radius of the trailer. Measure at the point where the radius starts to arch around the front of the trailer.

FIGURE 3



## CONTACT INFORMATION

G016BD-1119

NAME \_\_\_\_\_  
 ADDRESS \_\_\_\_\_  
 EMAIL \_\_\_\_\_  
 CITY \_\_\_\_\_ STATE \_\_\_\_\_ ZIP \_\_\_\_\_  
 PHONE \_\_\_\_\_ FAX \_\_\_\_\_  
 BOX/TRAILER MAKE \_\_\_\_\_  
 BOX/TRAILER MODEL \_\_\_\_\_

## BOX DIMENSIONS

A \_\_\_\_\_ UPPER BOX LENGTH  
 B \_\_\_\_\_ UPPER BOX WIDTH  
 Front \_\_\_\_\_ Center \_\_\_\_\_ Rear \_\_\_\_\_  
 N \_\_\_\_\_ TOP RAIL WIDTH  
 U \_\_\_\_\_ INSIDE BOX WIDTH  
 X \_\_\_\_\_ BOX HEIGHT

CORNER CONFIGURATION See Figure 1

	SQUARE	DIAGONAL	RADIUS
C _____	OUTSIDE CORNER RADIUS   For all radius fronts		
	C1 _____	FRONT RADIUS	
	C2 _____	SIDE RADIUS	
E _____	FLAT ACROSS FRONT		
V _____	FLAT ACROSS DIAGONAL		
W _____	DIAGONAL DEPTH		

REAR DOOR STYLE	TOP HINGE	SIDE HINGE
REAR HINGE DEPTH See Figure 2	0" TO 10"	11" TO 17"

MANUAL OVERRIDE KIT"	YES	NO
----------------------	-----	----

\*Recommended if hinge depth is > 2".

BACK CAP CHOICE**	ALUMINUM	FABRIC CAP
-------------------	----------	------------

\*\*MUST be 20-1/4" deep.

KNIFE GATE See Figure 3	YES	NO
-------------------------	-----	----

KNIFE GATE ANGLE	45°	57°
------------------	-----	-----

BELT WIDTH	36"	42"	48"
60"			

TARP WEIGHT	18 OZ.	22 OZ.
-------------	--------	--------

TARP COLOR(S) \_\_\_\_\_