



FABRIC MATERIALS AND TARPS

VINYL TARP

	STANDARD			PREMIUM COLORS: INCLUDE A 15% UP-CHARGE								
	BLACK	RED	WHITE	BLUE	GREEN	GRAY	MAROON	YELLOW	GRAPE	ORANGE	TAN	
18-OZ. Vinyl	✓*	✓*	✓*	✓*	✓*	✓	✓	✓*	✓	**	CALL	
22-OZ. Vinyl	✓*	✓*	✓	✓*	✓*	✓	✓	✓*	✓	**	CALL	
CRXT	✓*	**		**								

*Available through any Shur-Co® (US) location.
**Available only through Shur-Co® Florida Location.
NOTE: Our fabric maintains consistent color year after year. However, we cannot guarantee an exact color match. Sometimes, variations in sheen can make the color appear slightly different. Please note that the colors shown may not exactly match the actual tarp color.

MESH TARP

	MIGHTY MESH® Strongest Truck Tarp Material Available		KNITTED BLACK Rip Resistant		WHITE POLYESTER Ideal for Cold-Weather Applications
	BLACK Heavy-Duty Mesh for Dump Trucks & Trailers		MULTI-COLOR PVC Industry Standard Truck Tarp Material		

ASPHALT TARP

	18-OZ. VINYL 13 Colors Available See Vinyl Materials List		ASPHALT LUMITE Lighter than Vinyl Materials		RFL Tough to Tear Ideal for Cold Weather
	DONOPRENE Half the Weight of Vinyl Materials		AIR BAG Lighter than Vinyl Materials		

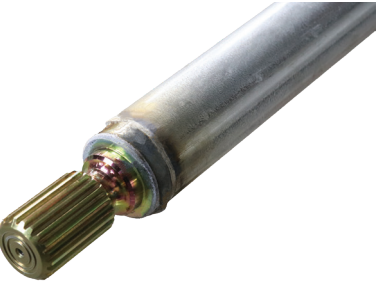
TEMPERATURE RESISTANCE	-50°F	0°F	50°F	100°F	150°F	200°F	250°F	300°F	350°F	400°F	450°F
MESH TARP											
Mighty Mesh®	-40° to 172°F										
Black	-40° to 172°F										
Knitted Black	-40° to 172°F										
Multi-Color PVC	-40° to 172°F										
White Polyester	-40° to 172°F										
ASPHALT TARP											
18-Oz. Vinyl	-30° to 176°F										
Donoprene	-30° to 176°F										
Asphalt Lumite	-40° to 325°F										
Air Bag	-30° to 176°F										
RFL	-40° to 325°F										

SHUR-CO® REPLACEMENT PARTS

Durabow 102 LG 1.41 OD
P/N 1705129



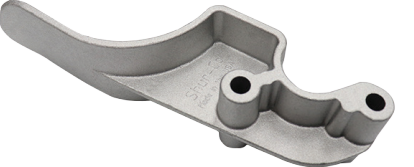
Roll Tube w/Spline 24' 3X2
P/N 1107059



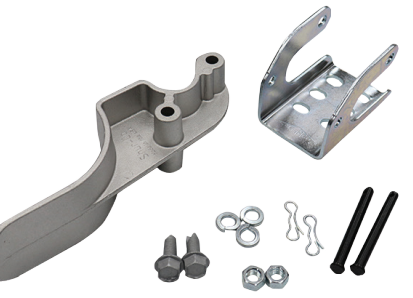
Crank Arm Kit 54" Shur-Flex
P/N 1107918



Tarp Stop Upright
P/N 1705775



Tarp Stop Kit
P/N 1124780



Rocker Switch
P/N 1800602



Motor 600 Watt 90:1
P/N 1802061



Spring Flat Coil Torsion
P/N 1800763



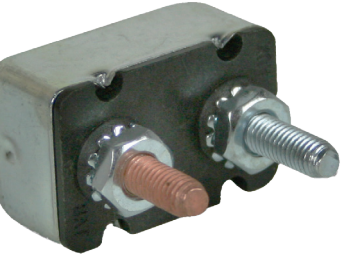
Arm Tarp 84" X 18' Black Mesh
P/N 1801283



Motor Reversing Solenoid
P/N 1703845



40 Amp Modified Reset
Circuit Breaker
P/N 1704354



Durabuilt™ Solenoid Switch
P/N 1809047



Remember that utilizing non-Genuine Shur-Co® and Donovan® parts can void your warranty agreement. All Durabuilt™ motors featured on Shur-Co® and Donovan® Construction products are 90:1 Gear Ratio Provides Extra Torque.



SHUR-CO® CONSTRUCTION LINE CARD

TARP CONTAINMENT SYSTEMS & ACCESSORIES



SC02GF-0724



SERVING YOU WORLDWIDE!
FROM DEMO TO BUILD, SHUR-CO® IS BY YOUR SIDE



- ★ World Headquarters
- ★ Corporate Manufacturing & Service Centers

At Shur-Co®, our employees go above and beyond to bring you superior-quality products. They take pride in their work and craftsmanship. Our attention to detail has earned us respect in the tarping industry for over 70 years in business. Shur-Co's innovative team of engineers and diligent research-and-development staff constantly strive to make our products the best they can be. We rigorously test for quality and love hearing from our customers. Our goal is always to make our products the top choice in the industry. Our mission? To be your partner in protection.

SHUR-CO® SALES TEAM
Our team consistently strives to offer our customers superior products and exceptional service.

DEALER LOCATOR PORTAL
Let us help you find an authorized Shur-Co® dealer in your area. For questions, call 1-800-437-4172.



RELIABLE PROTECTION FOR EVERY HAUL

APPLICATION COMPARISON	BELLY DUMPS	DUMP BODIES	END DUMPS	SIDE DUMPS	LANDSCAPE BOXES	OPEN-TOP VANS	WOODCHIP TRAILERS	MAX COVERAGE - L X W
FLIP-ARM								
Arm-Matic™	✓	✓	✓					Up to 37' Up to 102"
Flash™	✓	✓	✓					Up to 41' Up to 102"
Bullet™	✓	✓	✓		✓			Up to 23' Up to 102"
Hammer™ II	✓	✓	✓		✓			Up to 23' Up to 102"
5000X	✓	✓	✓		✓			Up to 16' Up to 102"
PULL-TARP								
UT Tarp System™					✓			Up to 23' Up to 102"
DuraPull™	✓	✓	✓		✓			Up to 23' Up to 102"
2000SR		✓	✓		✓			Up to 23' Up to 102"
FRONT-TO-BACK CABLE								
Shur-Trak™ II	✓	✓	✓					Up to 44' Up to 102"
Shur-Trak™ II Short Stop™	✓	✓	✓					Up to 44' Up to 102"
SIDE-TO-SIDE								
Shur-Lok®	✓	✓	✓			✓	✓	Up to 54' Up to 102"
Turning Point™ Bow		✓						Up to 48' Up to 102"
Electric Turning Point™ Bow								Up to 48' Up to 102"
4500 Series HD								Up to 54' Up to 102"
APEX™						✓	✓	44' to 53' Up to 102"
Belt 'N Ratchet	✓	✓	✓			✓	✓	Up to 54' Up to 102"
Cable-Lok™	✓					✓		Up to 24' Up to 102"
Electric Cable-Lok™	✓							Up to 24' Up to 102"
IronSide2™				✓				Up to 38' Up to 102"

WHAT ARE YOU HAULING?	ROCK	SAND	FRAC SAND	GRAVEL	REFUSE	ASPHALT	FLY ASH	CHIPS	SAWDUST
FLIP-ARM									
Arm-Matic™	✓	✓		✓	✓	✓			
Flash™	✓	✓		✓	✓	✓			
Bullet™	✓	✓		✓	✓	✓			
Hammer™ II	✓	✓		✓	✓	✓			
5000X	✓	✓		✓	✓	✓			
PULL-TARP									
UT Tarps & Landscape Boxes	✓	✓		✓	✓				
DuraPull™	✓	✓		✓	✓				
2000SR	✓	✓		✓	✓				
FRONT-TO-BACK CABLE									
Shur-Trak™ II	✓	✓		✓		✓			
Shur-Trak™ II Short Stop™	✓	✓		✓		✓			
SIDE-TO-SIDE									
Shur-Lok®	✓	✓	✓	✓	✓	✓	✓	✓	✓
Turning Point™ Bow	✓	✓		✓					
Electric Turning Point™ Bow	✓	✓		✓					
4500 Series HD	✓	✓	✓	✓	✓		✓	✓	✓
APEX™	✓	✓		✓				✓	✓
Belt 'N Ratchet	✓	✓	✓	✓	✓		✓	✓	✓
Cable-Lok™	✓	✓		✓		✓		✓	✓
Electric Cable-Lok™	✓	✓		✓		✓			
IronSide2™	✓	✓	✓	✓			✓		



ARM-MATIC™

- Aluminum Tarp Spool with Side Plates
- Galvanized Steel Crossover Bar - 2 PC.
- Aluminum High-Gloss Pivot Arms - 1 PC. Aluminum
- High Mount Compatible - Up to 23' Only
- Standard and Frameless Options Available
- Rocker Switch
- Durabuilt™ Motor with 3-Year Warranty



FLASH™

- Extruded Aluminum Roller Bar with Side Plates
- Aluminum High-Gloss Pivot Arms - 1 PC. Aluminum
- Assembled Housing - Standard for 38' and 41' Kits
- High-Mount Compatible - Up to 23' Only
- Rotary Switch
- Durabuilt™ Motor with a 3-Year Warranty



BULLET™

- Extruded Aluminum Roller Bar with Side Plates
- Aluminum High-Gloss Pivot Arms
- 2-PC. Arms (Aluminum)
- High-Mount Compatible - Up to 23' Only
- Rotary Switch
- Durabuilt™ Motor with 3-Year Warranty



HAMMER™ II

- Tarp Spool with Side Plates
- Extruded Aluminum Roller Bar
- 1.69" Round Arms - 2-PC. (Black Powder Coat)
- High Mount Compatible - Up to 23' Only
- HD Ground-Level Crank with Chain Guard
- Rotary Switch
- Durabuilt™ Motor with 3-Year Warranty



5000X

- Aluminum Tarp Spool with Side Plates
- 1-1/4" Square Arms - 2-PC. Galvanized
- High Mount Compatible - Up to 23' Only
- Direct-Drive Crank and Chain-Drive Crank
- Rotary Switch
- Durabuilt™ Motor with 3-Year Warranty



UT TARP SYSTEMS™

- "Tarp-Locking" Crank Handle
- Molded HDPE End Caps
- 3-PC Adjustable Width Aluminum Roller Bar
- Heavy-Duty Bearings
- Adjustable Width from 86"-104"
- Tension Ratchet



DURAPULL™

- 12-Gauge Galvanized Steel Housing
- Spring-Loaded Tarp Spool
- Steel-Mounting Strip - Standard with Steel Kits
- Aluminum Mounting Strip - Standard with Aluminum Kits
- Standard Tarp Guide
- External Spring Tension Adjustment



2000SR

- Tarp Spool with Side Plates
- Adjustable Width Steel Housing
- Aluminum Pull Bar
- Armless Spring Return
- Adjustable - Width Roller Bar
- External Spring Tension Adjustment



SHUR-TRAK™ II

- Twist-Lok™ Bow Shanks
- Rolling Wheel Wind Guards with Standard or Continuous Wind Anchors
- Cable Tension Scale or Adjustable Rear Pulley
- Rear Bow Stabilizer
- ⚡ Electric Upgrades Available



SHUR-LOK®

- Shur-Flex™ Crank Arms Pivots on a Knuckle, Folds for Storage
- Molded Resin Durabow™ Supports the Tarp and Allows for Some Give During Loading
- Flexible Easy-Off tarp Stops Bend in Subzero Cold
- ⚡ Electric Upgrades Available



ELECTRIC TURNING POINT™ BOW

- Electric Cut-Off Switch
- Automatic Overload Slip Clutch
- Locking Skid Plate
- Bow Actuator
- ShurLink™ Remote System Capabilities
- ⚡ Easy Electric-to-Manual Conversion



4500 SERIES HD

- Spiral Spring
- HD Mounting Bracket
- Dual-Pivot Motor Mount and Custom Motor Shroud
- SMARTwire™ Sealed Harness and Sealed Control Box
- ShurLink™ Remote System Capabilities



APEX™

- Easily Covers Chip/Refuse Loads 24" Above the Trailer Top Rail
- Fits Trailers with Reduced Spacing Between the Tractor and the Trailer
- Superior Motor and Circuit Protection
- ShurLink™ Remote System Capabilities



BELT 'N RATCHET

- Aluminum Front and Rear End Caps
- 2" Ratchet Hold Down
- Easy-Off Tarp Stops
- Rope Return
- Square Key Crank Arm



CABLE-LOK™

- SMARTDrive™ or Durabuilt™ Motor Compatible
- SMARTwire™ with Dual-Conductor Plug
- Switch, Solenoid, Breaker, and Arm
- Bungee Return



IRONSIDE2™

- Direct-Drive Motor Compatible
- Solid Molded Traction Wheel Grip Design
- SMARTwire™ Molded Connections for the Trailer and the Motor
- ShurLink™ Remote System Capabilities in Express Mode



SHURLINK™



CONTROL MODULES



TENSION ARM™



LITEALL™ SOLAR POWER PACK



ARM-LOCK™



SERVICE TRUCK POWER KITS



SPRING TRAP™ II



PROTRAP® 350