



FABRIC MATERIALS AND TARPS

VINYL TARP

	STANDARD			PREMIUM COLORS: INCLUDE A 15% UP-CHARGE								
	BLACK	RED	WHITE	BLUE	GREEN	GRAY	MAROON	YELLOW	GRAPE	ORANGE	TAN	
18-OZ. Vinyl	✓*	✓*	✓*	✓*	✓*	✓	✓	✓*	✓	**		CALL
22-OZ. Vinyl	✓*	✓*	✓	✓*	✓*	✓	✓	✓*	✓			CALL
CRXT	✓*	**		**								

*Available through any Shur-Co® (US) location.
**Available only through Shur-Co® Florida Location.
NOTE: Our fabric maintains consistent color year after year. However, we cannot guarantee an exact color match. Sometimes, variations in sheen can make the color appear slightly different. Please note that the colors shown may not exactly match the actual tarp color.

MESH TARP

	MIGHTY MESH® Strongest Truck Tarp Material Available		KNITTED BLACK Designed for Hy-Tower™ Rip Resistant		WHITE POLYESTER Ideal for Cold-Weather Applications
	BLACK Heavy-Duty Mesh for Dump Trucks & Trailers		MULTI-COLOR PVC Industry Standard Truck Tarp Material		ORANGE KNITTED Mesh for Sidewinder™ II and Sidewinder™ 350
	BLACK GRID Mesh Double-Flip™				

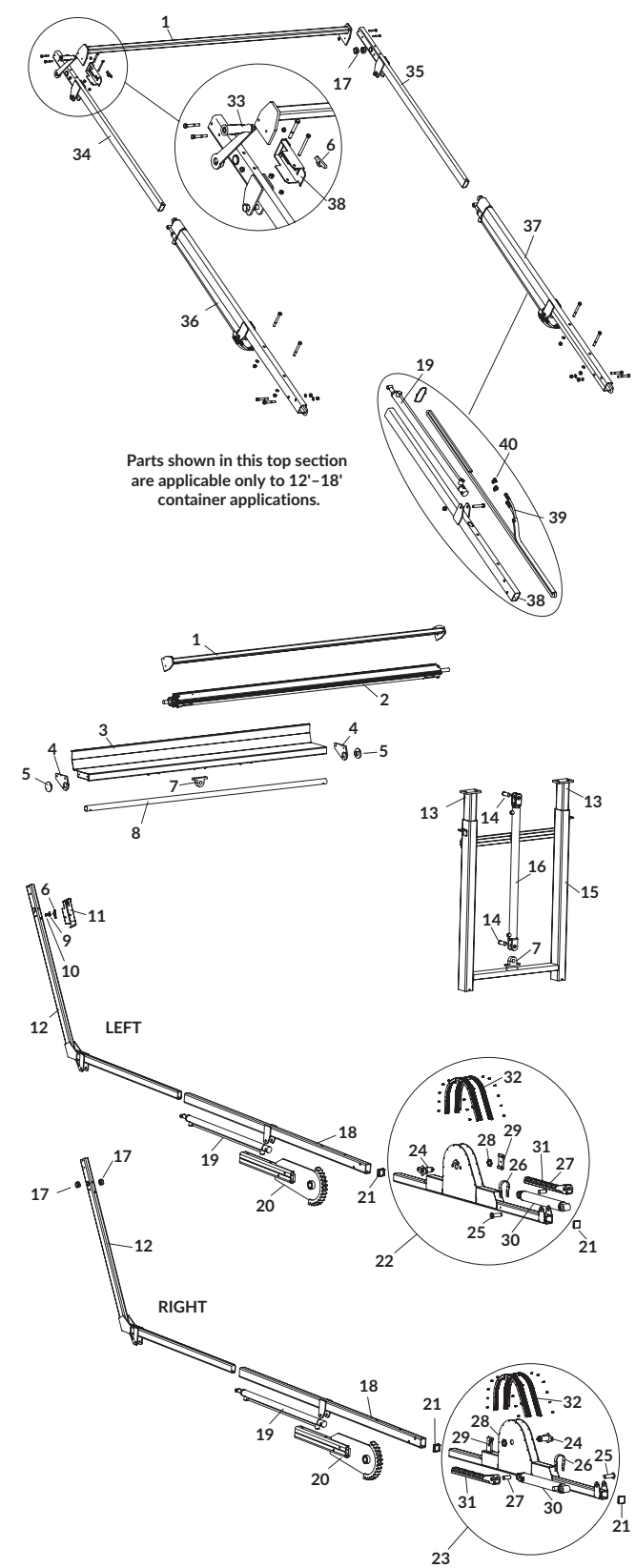
TARP REPAIR SUPPLIES

DESCRIPTION	P/N
Professional Tarp Repair Kit	*1108059
Standard Tarp Repair Kit	*1102111
Strip Kit w/Glue	1120613
Tarp Repair Kit w/ Vinyl Tape - 6" X 10'	1128814
Vinyl Patch Kit	1801724
Handi Grommet Kit w/Grommets	1703251
1 Wooden Roller	1701391
2 2" x 3" Patch w/Radius Corners	1111869
3 3" x 4" Patch w/Radius Corners	1111870
4 4" x 5" Patch w/Radius Corners	1111871
5 3" Round Patch	1111872
6 Vinyl-Coated Tarp Remnant - Black	1128714
Vinyl-Coated Tarp Remnant (specify color)	1107371
Vinyl Repair Tape - 6" x 50' (not shown)	**1706352
7 HH-66 Thinner - Pint	1700697
8 HH-66 Thinner - Gallon	1700602
HH-66 Vinyl Cement - 8 Oz.	**1700356
9 HH-66 Vinyl Cement - Pint	1801723
10 HH-66 Vinyl Cement - Quart	1700355
11 HH-66 Vinyl Cement - Gallon	1700354
#3 Brass Grommet (minimum order 25)	**1700673

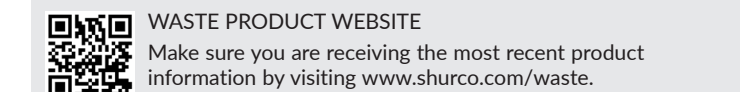
*Black tarp unless otherwise specified.
**Not shown in diagram.

SWAT® REPLACEMENT PARTS

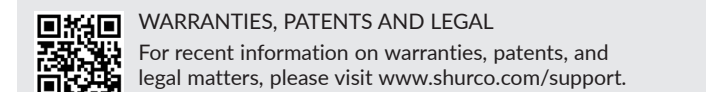
DESCRIPTION	COMP. P/N	P/N
1 Stabilizer Bar	HR4753	1808873
2 Roller Bar - SWAT®	H7002C	1803805
3 Tarp Roll Base Rest	HR4505-2	1808872
4 Tarp Tube Bracket Kit	HR4756	1810063
5 Tarp Tube Cap	HR4757	1809148
6 Ratchet Pawl	HR4788	1809209
7 Gantry Cylinder Clevis Eye	H7032	1808869
8 Tarp Tube	HR4758-2	1808865
9 Pawl Torsion Spring	HR4786	1808851
10 Ratchet Pawl Bushing	HR4787	1808875
11 Ratchet Guard Assy - 18' to 22' Container	HR4789	1809009
11 Ratchet Guard Assy - 12' to 18' Container		1811487
12 Upper Arm - 18' to 22' Container	HR4751	1808874
12 Upper Arm - 12' to 18' Container		1811484
13 Gantry Telescoping Leg	HR4512	1808871
14 Clevis Pin - 1" OD	H7062	1809013
15 Gantry Base Frame	HR4515	1808868
16 Gantry Cylinder - 2" Bore - 36" Stroke	HR4520	1808891
17 Shaft Locking Collar - 1"	HR4624	1808855
18 SWAT® Lower Arm - 93-1/4"	HR4750	1808879
18 SWAT® Lower Arm - 75-3/4"		1810403
19 Lower Arm Cylinder - 1 1/2" Bore - 36" Stroke	HR4752	1808892
20 Pivot Gear Arm	HR4760	1808887
21 Square End Plug	HR4548A	1808846
22 Gear/Pivot Assy - 18' to 22' Container - L	HR4762A	1809355
22 Gear/Pivot Assy - 12' to 18' Container - L		1811496
23 Gear/Pivot Assy - 18' to 22' Container - R	HR4761A	1809360
23 Gear/Pivot Assy - 12' to 18' Container - R		1811497
24 Pivot Pin Assy	A3881KIT	1809284
25 Rack Cylinder Mtg Pin	A3883	1808883
26 Cylinder Loop Strap	HR4731	1808881
27 Rack Cylinder Connecting Pin	D18836	1809014
28 Castle Nut	HR4785	1809169
29 Pivot Hose Guide	HR4728	1809669
30 Hydraulic Cylinder - 2 1/2" Bore - 16" Stroke	HR4719	1808890
31 Rack Gear	A3868B	1808886
32 Brush Kit		1809776
33 Crank Handle Assy		1809177
34 Upper Arm Assy - L		1811491
35 Upper Arm Assy - R		1811492
36 Lower Arm Assy - L		1810404
37 Lower Arm Assy - R		1810405
38 SWAT® Lower Arm - 75-3/4"		1810403
39 Hydraulic Hose - 1/4" x 16' x #6 - JICF One End		1808935
40 Hydraulic Fitting - #6 JICM x #6 ORBM x EL 90		1705725
TARPS		
Mighty Mesh® w/Flaps - 9'8" x 28'	HR4616	1801640
Mighty Mesh® - 8' x 28'		1801686
MM w/Flaps & Hook Lift Cutout - 9'8" x 28'		1809675
Mighty Mesh® & Hook Lift Cutout - 8' x 28'		1809674



QUICK LINKS



WASTE PRODUCT WEBSITE
Make sure you are receiving the most recent product information by visiting www.shurco.com/waste.



WARRANTIES, PATENTS AND LEGAL
For recent information on warranties, patents, and legal matters, please visit www.shurco.com/support.

Remember that utilizing non-Genuine Shur-Co® and Donovan® parts can void your warranty agreement. All Durabuilt™ motors featured on Shur-Co® and Donovan® Waste & Recycling products are 90:1 Gear Ratio Provides Extra Torque.



SHUR-CO®

WASTE & RECYCLING LINE CARD

TARP CONTAINMENT SYSTEMS & ACCESSORIES

SC0036F-0724

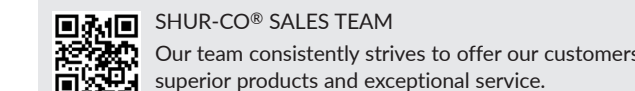


SERVING YOU WORLDWIDE!
FROM COLLECTION TO DISPOSAL SHUR-CO® IS BY YOUR SIDE

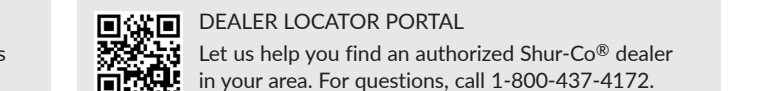


- ★ World Headquarters
- ★ Corporate Manufacturing & Service Centers

At Shur-Co®, our employees go above and beyond to bring you superior-quality products. They take pride in their work and craftsmanship. Our attention to detail has earned us respect in the tarping industry for over 70 years in business. Shur-Co's innovative team of engineers and diligent research-and-development staff constantly strive to make our products the best they can be. We rigorously test for quality and love hearing from our customers. Our goal is always to make our products the top choice in the industry. Our mission? To be your partner in protection.



SHUR-CO® SALES TEAM
Our team consistently strives to offer our customers superior products and exceptional service.



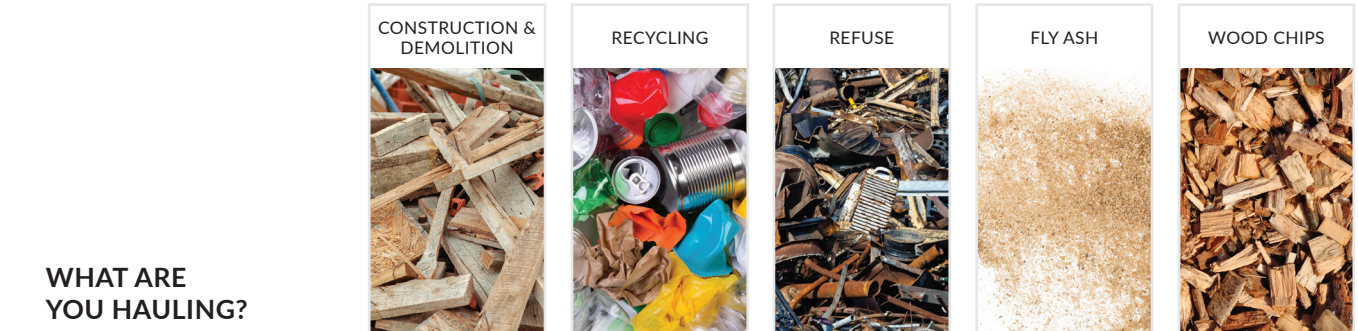
DEALER LOCATOR PORTAL
Let us help you find an authorized Shur-Co® dealer in your area. For questions, call 1-800-437-4172.



RELIABLE PROTECTION FOR EVERY LOAD

MAX COVERAGE - L X W

ROLL-OFF		10'	20'	30'	40'	50'	60'	70'
SWAT®	12' - 22'	10 - 40 Cu. Yd.						
Quick-Flip4™	Up to 36'	10 - 50 Cu. Yd. & Roll-Off Trailers						
Hy-Tower™	Up to 22'	10 - 40 Cu. Yd.						
SIDE FLIP								
Sidewinder™ II Sidewinder™ 350	Up to 53' Up to 102"							
Double-Flip™	Up to 53' Up to 102"							
SIDE-TO-SIDE								
Shur-Lok®	Up to 53' Up to 102"							
Belt 'N Ratchet	Up to 53' Up to 102"							
4500 Series HD	Up to 53' Up to 102"							
APEX™	Up to 53' Up to 102"							
FLIP-ARM								
Arm-Matic™	Up to 53' Up to 102"							



WHAT ARE YOU HAULING?

ROLL-OFF					
SWAT®	✓	✓	✓		
Quick-Flip4™	✓	✓	✓		
Hy-Tower™	✓	✓	✓		✓
SIDE FLIP					
Sidewinder™ II Sidewinder™ 350	✓	✓	✓		
Double-Flip™	✓	✓	✓		
SIDE-TO-SIDE					
Shur-Lok®	✓	✓	✓		✓
Belt 'N Ratchet	✓	✓	✓	✓	✓
4500 Series HD	✓	✓	✓	✓	✓
APEX™	✓	✓	✓	✓	✓
FLIP-ARM					
Arm-Matic™	✓	✓	✓		

No matter what you're hauling—be it recycling, refuse, or fly ash—our products provide the ultimate solution to keep your loads protected and secure. Each product is designed with unique features to ensure optimal performance and safety during transit. Our offerings are engineered to meet the highest standards of reliability and efficiency. Discover the full range of our products by visiting www.shurco.com/waste.



SWAT®

- Best Designed, Best Built, Most Dependable Tarp System Available Today
- Secure Flanged/Bolted Pivot Gear Pins Prevent Loosening Gear Over Time
- Optional Self-Contained, Remote Control Operation Available



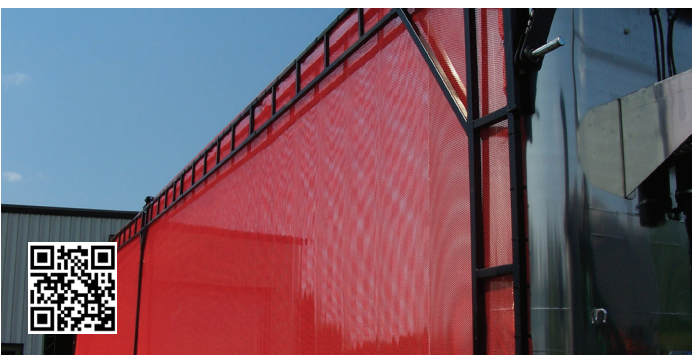
QUICK-FLIP4™

- Wireless Remote Operation
- Safety Work Lights Included (Standard) - Wireless Operation
- Coiled Power Cord for Cleaner Appearance
- Marine Grade Toggle Switch
- Tarp Tower Ships Preassembled from Factory



HY-TOWER™

- 12V Self-Contained Electric/Hydraulic Power Unit
- Aluminum Single Leg Mast/15' Lift - Standard on P/N 1801019
- Steel Double Leg Mast/12' Lift - Standard on P/N 1803900
- Nylon-Coated Cable Assembly
- Spring-Loaded, Extruded, Aluminum Roller Bar



SIDEWINDER™ II | SIDEWINDER™ 350

- Universal Components (Fits Either Side of Trailer)
- Right/Left Side Mounting Hinges that Mount to Either Side
- Self Contained Electric/Hydraulic Power Unit
- Hydraulic (Wet) Valve Kit - Standard on Wet Kits
- Preassembled Head Assemblies
- Forward/Rear/Over - Center Arm Brace Locations



DOUBLE-FLIP™

- HD Steel Pivot Arms
- Hydraulic (Wet) Valve Kit
- Lower Profile than Single Lid System



SHUR-LOK®

- Shur-Flex™ Crank Arms Pivots on a Knuckle, Folds for Storage
- Molded Resin Durabow™ Supports the Tarp and Allows for Some Give During Loading
- Flexible Easy-Off Tarp Stops Bend in Subzero Cold
- Electric Upgrades Available



BELT 'N RATCHET

- 6" Offset Belt Flex™ Tarp Stop
- Solid Vinyl Tarp with Flaps to Fully Seal Container
- Bows Support Tarp and Shed Water (Sludge Container Kit)
- Sludge Container Kits Fit Up to 26' Long Boxes
- Trailer Kits Fit Up to 53' Long Trailers
- Industry's Best Electric Options Available



APEX™

- Easily Covers Chip/Refuse Loads 24" Above the Trailer Top Rail
- Fits Trailers with Reduced Spacing Between the Tractor and the Trailer
- Superior Motor and Circuit Protection
- ShurLink™ Remote System Capabilities



4500 SERIES HD

- Spiral Spring Returns
- HD Front/Rear Alum. Torsion Arms with Flex-Elbow and Boot
- HD Mounting Bracket
- Dual-Pivot Motor Mount and Custom Motor Shroud
- Sealed Control Box and SMARTwire™ Sealed Harness
- ShurLink™ Remote System Capabilities
- Industry's Best Electric Options Available



ARM-MATIC™

- Aluminum Tarp Spool with Side Plates
- Galvanized Steel Crossover Bar - 2 PC.
- Aluminum High-Gloss Pivot Arms
- Standard and Frameless Options Available
- Rocker Switch
- Durabuilt™ Motor with 3-Year Warranty
- Used in Short Truck Junk Hauling Applications

COMMON REPLACEMENT TARPS AND SWAT® PARTS

SWAT® | ROLL-OFF TRUCK/TRAILER TARPS

DESCRIPTION	SIZE	FABRIC	COLOR	P/N
Tarp, Fits All Roll-Off Trucks	8' x 28' - 22' Container	Mighty Mesh®	Multi-Color	1801686
Tarp, Pioneer Replacement	9'8" x 28' w/Flaps - 22' Container	Mighty Mesh®	Multi-Color	1801640
Tarp, Fits All Hook Lift Trucks	8' x 28' - 22' Container w/Hook Lift	Mighty Mesh®	Multi-Color	1809674
Tarp, Fits All Hook Lift Trucks	9'8" x 28' w/Flaps - 22' Container w/Hook Lift	Mighty Mesh®	Multi-Color	1809675

QUICK-FLIP4™ | ROLL-OFF TRUCK/TRAILER TARPS

DESCRIPTION	SIZE	FABRIC	COLOR	P/N
Tarp, Fits All Roll-Off Trucks	8' x 34' - 30' Container	Mighty Mesh®	Multi-Color	1808734
Tarp, Fits All Roll-Off Trucks	8' x 38' - 34' Container	Multi-Color PVC	Multi-Color	1808735
Tarp, Fits All Roll-Off Trucks	8' x 42' - 38' Container	Multi-Color PVC	Multi-Color	1808736

BELT 'N RATCHET | TRANSFER TRAILER TARPS

KIT NAME	KIT SIZE	TARP SIZE	FABRIC	P/N
Belt 'N Ratchet Tarp	45' x 102"	45' x 123"	Gator Mesh	1902064
Belt 'N Ratchet Tarp	48' x 102"	48' x 123"	Gator Mesh	1902065
Belt 'N Ratchet Tarp	53' x 102"	53' x 123"	Gator Mesh	1902066
Belt 'N Ratchet Tarp	45' x 96"	45' x 117"	Gator Mesh	1902067
Belt 'N Ratchet Tarp	48' x 96"	48' x 117"	Gator Mesh	1902068
Belt 'N Ratchet Tarp	53' x 96"	53' x 117"	Gator Mesh	1902069

BELT 'N RATCHET | ROLL-OFF CONTAINER TARPS

KIT NAME	KIT SIZE	TARP SIZE	FABRIC	P/N
Belt 'N Ratchet Tarp	12'	14'3" x 115"	18-OZ Vinyl	1901600
Belt 'N Ratchet Tarp	14'	16'3" x 115"	18-OZ Vinyl	1901601
Belt 'N Ratchet Tarp	16'	18'3" x 115"	18-OZ Vinyl	1901602
Belt 'N Ratchet Tarp	18'	20'3" x 115"	18-OZ Vinyl	1901603
Belt 'N Ratchet Tarp	20'	22'3" x 115"	18-OZ Vinyl	1901604
Belt 'N Ratchet Tarp	22'	24'3" x 115"	18-OZ Vinyl	1901605
Belt 'N Ratchet Tarp	24'	26'3" x 115"	18-OZ Vinyl	1901606
Belt 'N Ratchet Tarp	26'	28'3" x 115"	18-OZ Vinyl	1901607

CONTAINER LINER BAGS

WEIGHT	QUALITY	COLOR	P/N
4-Mil Liner	4 per Box	Black	1800144
6-Mil Liner	2 per Box	Black	1800145

COMPACTOR DIAPERS

WEIGHT	FABRIC	P/N
5' x 7'	Multi-Color PVC Mesh	1800024
6' x 8'	Multi-Color PVC Mesh	1800025

Call for +10 bulk and +20 bulk pricing breaks. Not available on all tarps from all locations. No color option available on Mighty Mesh® and PVC mesh.

HIGH VOLUME SWAT® REPLACEMENT PARTS

LOWER ARM "HARD PIPE" CYLINDER
P/N 1808892
REPLACES COMPETITOR P/N HR4752



RACK/PIVOT CYLINDER
P/N 1808890
REPLACES COMPETITOR P/N HR4719



LOWER "CYLINDER" ARM
P/N 1808879
REPLACES COMPETITOR P/N HR4750



UPPER "HOCKEY STICK" ARM
P/N 1808874
REPLACES COMPETITOR P/N HR4751



STABILIZER BAR
P/N 1808873
REPLACES COMPETITOR P/N HR4753



ROLLER BAR
P/N 1803805
REPLACES COMPETITOR P/N HR47002C



SHURLINK™



CONTROL MODULES



LITEALL™ SOLAR POWER PACK



SERVICE TRUCK POWER KITS



ARM-LOCK™