



SHURCOTM

ROLLING TARP SYSTEMS PRODUCT CATALOG

2026

TABLE OF CONTENTS

SHURCO™ ROLLING TARP SYSTEMS..... 2-3

REPLACEMENT PARTS - MAGNUM™..... 4

 Headboard Assemblies..... 5

 Headboard Locks..... 6

 Headboard Components..... 7

 Headboard Accessories/Bolting..... 8

 Bow Assemblies..... 9

 Bow Components..... 10-11

 Foot Assemblies..... 12

 Wheel And Axles..... 12

 Hinge Lifters..... 12

 Winding Braces..... 13

 Low Profile Rear Tensioner..... 14

 Post Assemblies..... 14

 Post/Pocket Assemblies..... 15

 Post Ratchets/Accessories..... 16

 Track Assemblies..... 16

 Tarp End Section..... 17

 Tarp Intermediate Section..... 17

 Rear Flap Assemblies..... 17

 Over 90 Bar..... 18

 Velcro Wings..... 18

 Rear Flap Cranks..... 19





 Rear Flap Pulleys..... 19

 Rear Steps..... 19

 Miscellaneous..... 20

MEASUREMENT SHEETS..... 22-33



<p>ORDER TERMS AND CONDITIONS</p> 	<p>WARRANTY</p> 	<p>PATENTS</p> 	<p>LOCATIONS</p> 
---	---	---	--

PRODUCT CATEGORIES

Each Shurco tarping system comes with standard features. These are bulleted (●) and noted as Standard in bold type in the STANDARD FEATURES AND OPTIONS chart below right, like the 22-ounce vinyl tarp in black, green, gray or red, plus a skylight panel, listed below right. Any change from these standard features will affect the cost of your system. This is noted as an "add," "deduct" or no charge "N/C."



Safe, fast and lightweight customizable tarping! Shurco systems save time and money, allowing one-person operation and reducing injury by opening and closing safely from the ground.

Lightweight and aerodynamic, Shurco Rolling Tarp System adds just 1,750 lbs. to a standard 48' flatbed trailer. It compresses to 8' and locks to any spot on its aerospace-quality high-strength aluminum track. A replaceable polymer insert makes rolling easy and extends track life. Rubber seals between track and deck accommodate factory-mounted winches and keep out road debris.

Choose from standard system heights of 72", 84", 88", 100", 102", or 104" configurations for flatbed trailers and straight trucks – or let our in-house engineering staff design around your specific needs.

Shurco Rolling Tarp Systems are backed by a two-year front-to-back warranty.

COMPLETE KITS | Standard 102" Wide Kits w/ Low-Profile Rear Locks

TRAILER TYPE	TRAILER LENGTH	SYSTEM HEIGHT					
		72"	84"	88"	100"	102"	104"
Straight Truck	12' - 15'						
Straight Truck	16' - 19'						
Straight Truck	20' - 26'						
Straight Truck	27' - 33'						
Flatbed	34' - 40'						
Flatbed	41' - 48'						
Flatbed	49' - 53'						
Step Deck	48'						
Step Deck	53'						
Double Drop	48' - 53'						

If you want your tarp in a non-standard color, for example, you'll need to add to your total cost (call to see what colors are available). Ink and digital graphics can also be ordered for an additional charge (please call for a quote).

NOTE: All prices in this catalog are subject to change without notice.

CONFIGURATION ORDERING KEY

- Alphabetical Letter (B) = Feature
- Bullet (●) = Standard Feature in Kit
- Numeric Value (2) = Different Available Option for a Feature

Ex. of Customer's Chosen Feature: B2 [Outside Lights (5)]

STANDARD FEATURES AND OPTIONS

A	HEADBOARD – ALUMINUM	
●	High Strength – 3/16" Sheet	Standard
B	ACCESSORIES	
1	Inside Flood Lights (2)	Add
2	Outside Lights (5)	Add
3	Nose Cone - White or Black	Add
4	Access Door (32" x 60" Standard)	Add
5	Chain Box	Add/Side
6	Dunnage Rack	Add/Side
7	Front Build-Out - 8"	Add
8	Utility Shelf	Add
C	FRONT LOCKS	
●	Ground Operated	Standard
D	TRACK – HIGH STRENGTH EXTRUDED ALUMINUM*	
●	Magnum Profile	Standard
1	Titetrax™ Profile	N/C
2	Folding Track Extension (Magnum)	Add
E	WHEELS	
●	Maintenance-Free Assemblies	Standard
F	REAR DOOR/FLAP	
●	Rope & Pulley w/Velcro Flap	Standard
1	Rope & Pulley w/Over 90 Bars	N/C
2	Crank w/Velcro Flaps	N/C
3	Crank w/Over 90 Bars	N/C
G	LIFTERS – ALUMINUM	
●	Hinged Assembly	Standard
1	Add'l Lifts – For More Loading Clearance	Add
H	TENSIONING	
●	Winding Brace	Standard
1	Low Profile	Deduct
2	Rear Post w/Ratchets	Add
I	TARP OPTIONS	
●	22Oz. Vinyl Tarp – Choice of Standard Colors	Standard
●	Skylight Roof	Standard
1	Non-Standard Colors**	Add
2	Ink Graphics	Add
3	Digital Graphics	Add
J	ACCESSORIES	
1	Stainless Steel Light Bars	Add
2	Rear Step - Passenger Side	Add
3	Rear Step - Driver Side	Add

*Track sections come pre-cut to length on systems up to 48'. For trailers longer than 48', sections will come in two pieces: 48' plus remaining length..

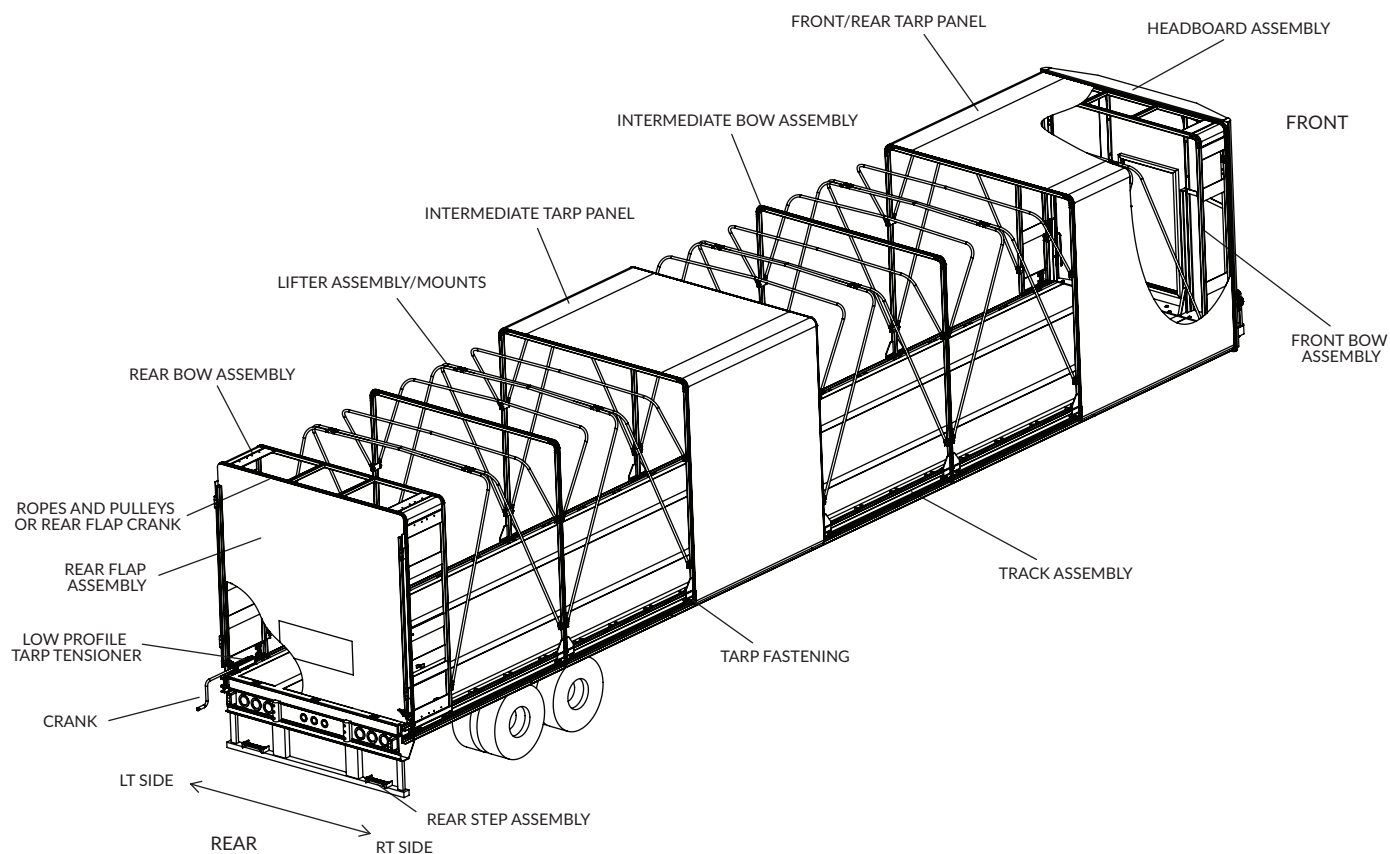
**Call to check on non-standard color availability.

Genuine Shurco replacement parts are proven to fit and function better. For quality performance, go with the name you can trust. Remember that utilizing non-Genuine parts voids your warranty. For more information, call our Shurco distribution centers at 800-474-8756.

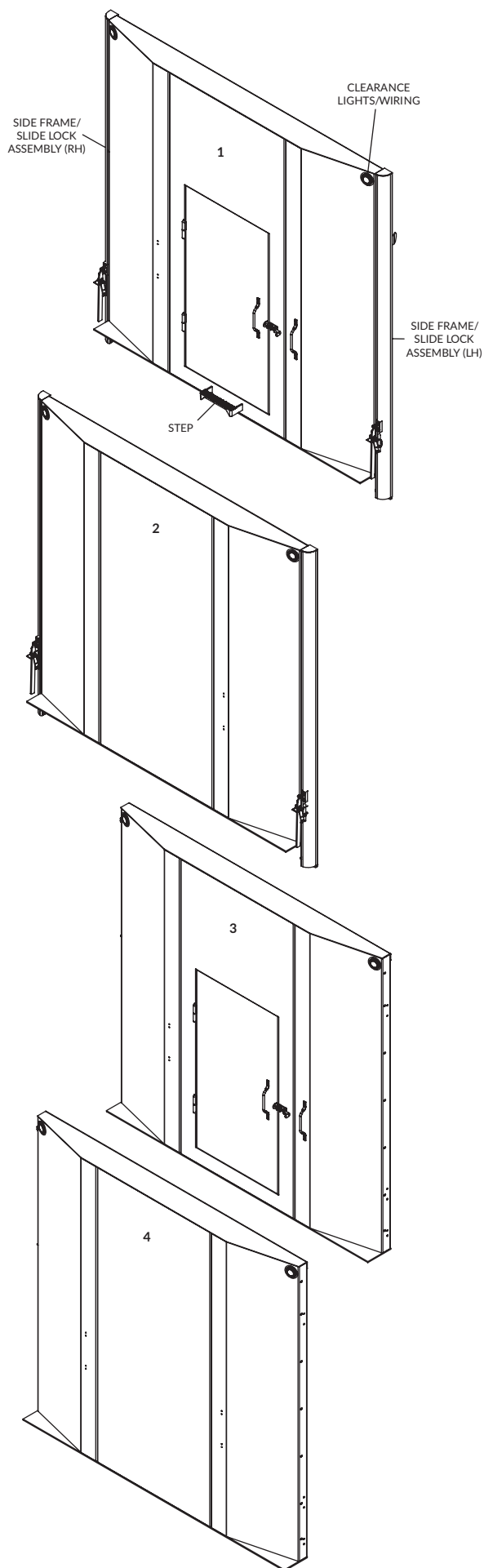
NOTE: All prices in this catalog are subject to change without notice.

SYSTEM AND COMPONENT IDENTIFICATION

- 1) FOR MAGNUM AND TITETRAX™ SYSTEMS, get the serial number and job number from the aluminum tag located at eye level on the driver side of the headboard.
- 2) FOR CLASSIC SYSTEMS, get the last five (5) digits of the trailer VIN number.
- 3) Fill out the measurement sheet (at end of catalog) that most closely resembles your trailer/truck.



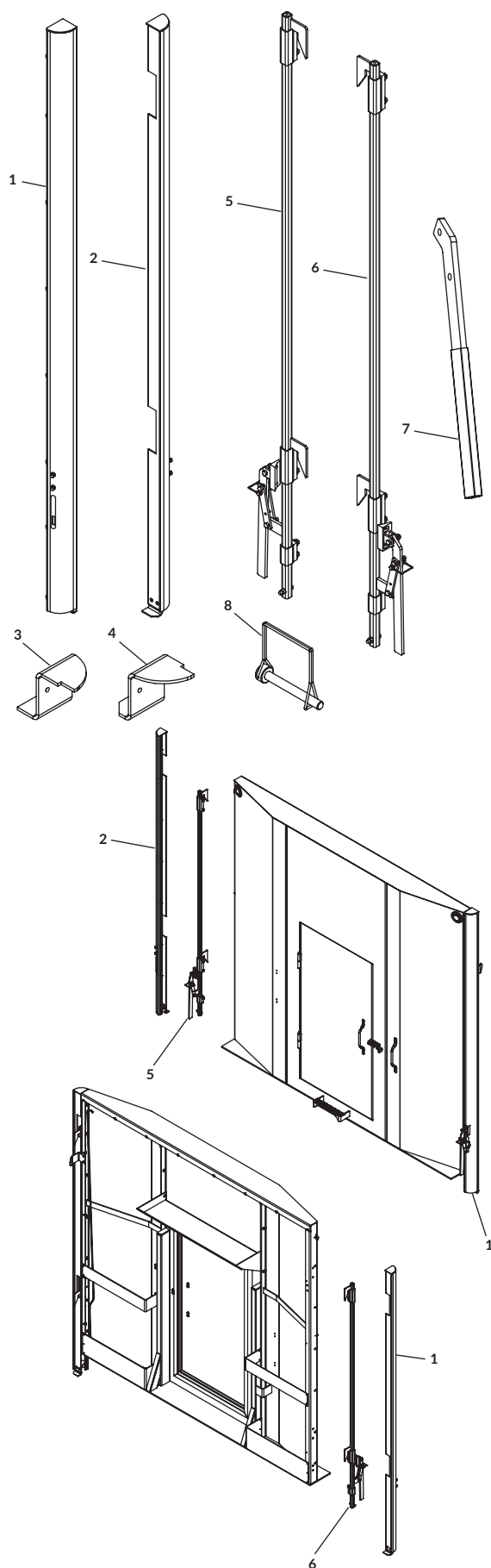
HEADBOARD ASSEMBLIES



	DESCRIPTION	P/N	PRICE
1	HEADBOARD ASSY_MAG_W/DOOR/STEP/LOCK 72H 108W	2002350	
	HEADBOARD ASSY_MAG_W/DOOR/STEP/LOCK 84H 108W	2001140	
	HEADBOARD ASSY_MAG_W/DOOR/STEP/LOCK 88H 108W	2002953	
	HEADBOARD ASSY_MAG_W/DOOR/STEP/LOCK 100H 108W	2000626	
	HEADBOARD ASSY_MAG_W/DOOR/STEP/LOCK 102H 108W	2002954	
	HEADBOARD ASSY_MAG_W/DOOR/STEP/LOCK 104H 108W	2002955	
	HEADBOARD ASSY_MAG_NO DOOR W/WING/LOCK 72H 108W	2001156	
2	HEADBOARD ASSY_MAG_NO DOOR W/WING/LOCK 84H 108W	2002092	
	HEADBOARD ASSY_MAG_NO DOOR W/WING/LOCK 88H 108W	2002950	
	HEADBOARD ASSY_MAG_NO DOOR W/WING/LOCK 100H 108W	2001485	
	HEADBOARD ASSY_MAG_NO DOOR W/WING/LOCK 102H 108W	2002951	
	HEADBOARD ASSY_MAG_NO DOOR W/WING/LOCK 104H 108W	2002952	
	HEADBOARD ASSY_MAG_W/DOOR NO WING/STEP 72H 108W	2002052	
	HEADBOARD ASSY_MAG_W/DOOR NO WING/STEP 84H 108W	2000917	
3	HEADBOARD ASSY_MAG_W/DOOR NO WING/STEP 88H 108W	2002947	
	HEADBOARD ASSY_MAG_W/DOOR NO WING/STEP 100H 108W	2000195	
	HEADBOARD ASSY_MAG_W/DOOR NO WING/STEP 102H 108W	2002948	
	HEADBOARD ASSY_MAG_W/DOOR NO WING/STEP 104H 108W	2002949	
	HEADBOARD ASSY_MAG_NO DOOR/WING/STEP 72H 108W	2001150	
	HEADBOARD ASSY_MAG_NO DOOR/WING/STEP 84H 108W	2001290	
	HEADBOARD ASSY_MAG_NO DOOR/WING/STEP 88H 108W	2002956	
4	HEADBOARD ASSY_MAG_NO DOOR/WING/STEP 100H 108W	2000963	
	HEADBOARD ASSY_MAG_NO DOOR/WING/STEP 102H 108W	2002957	
	HEADBOARD ASSY_MAG_NO DOOR/WING/STEP 104H 108W	2002958	
	HEADBOARD DOT STYLE NO DOOR/WING 72H 108W	2001357	

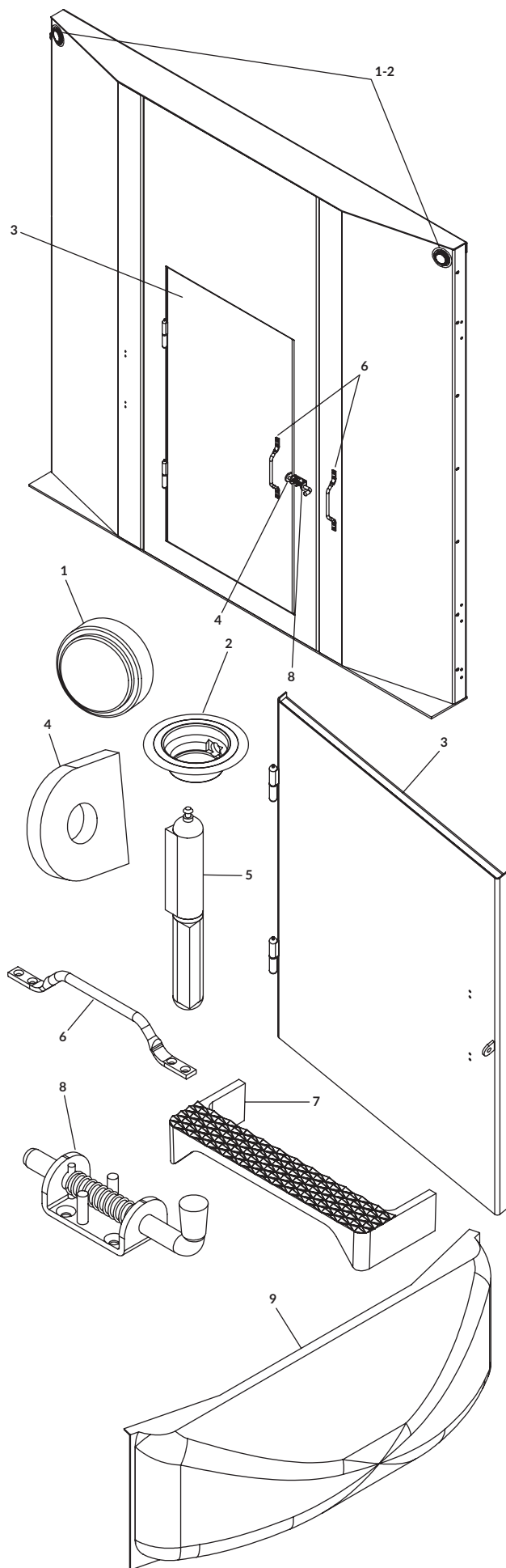
HEADBOARD LOCKS

	DESCRIPTION	P/N	PRICE
1	SIDE FRAME ASSY HDBD 72H LT	2001014	
	SIDE FRAME ASSY HDBD 84H LT	2001011	
	SIDE FRAME ASSY HDBD 88H LT	2002961	
	SIDE FRAME ASSY HDBD 100H LT	2000627	
	SIDE FRAME ASSY HDBD 102H LT	2002962	
	SIDE FRAME ASSY HDBD 104H LT	2002963	
2	SIDE FRAME ASSY HDBD 72H RT	2001015	
	SIDE FRAME ASSY HDBD 84H RT	2000630	
	SIDE FRAME ASSY HDBD 88H RT	2002964	
	SIDE FRAME ASSY HDBD 100H RT	2000628	
	SIDE FRAME ASSY HDBD 102H RT	2002965	
	SIDE FRAME ASSY HDBD 104H RT	2002966	
3	SIDE FRAME BOTTOM COVER LT	2000183	
4	SIDE FRAME BOTTOM COVER RT	2000184	
5	FRONT LOCK ASSY 92H-110H LT	2000532	
	FRONT LOCK ASSY 76H-91H LT	2000235	
	FRONT LOCK ASSY 64H-75H LT	2001007	
6	FRONT LOCK ASSY 92H-110H RT	2000534	
	FRONT LOCK ASSY 76H-91H RT	2000236	
	FRONT LOCK ASSY 64H-75H RT	2001008	
7	FRONT LOCK HANDLE	2000685	
8	FRONT LOCK SAFTY CLIP ASSY	2000192	



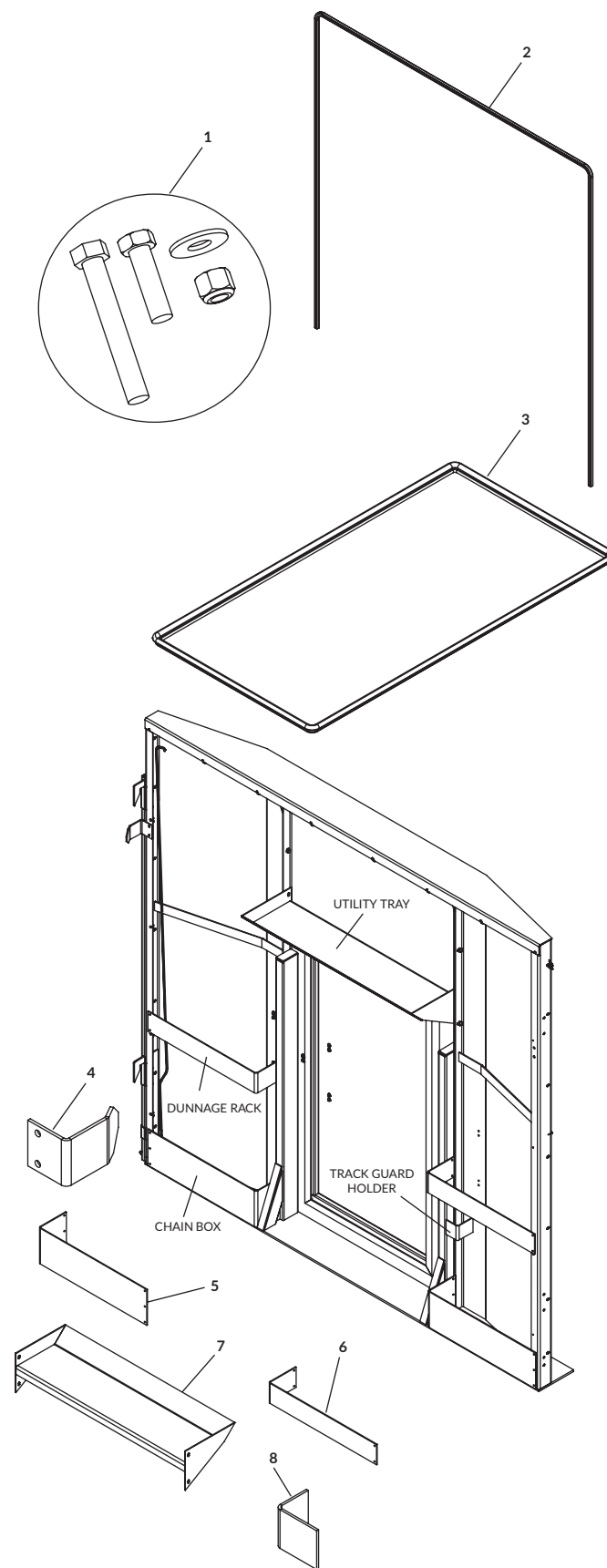
HEADBOARD COMPONENTS

DESCRIPTION	P/N	PRICE
1 LIGHT AMBER CLEARANCE LED	2000314	
2 GROMMET LIGHT 2.5 OPEN BACK	2000315	
3 HEADBOARD MAN DOOR ASSY MAGNUM	2000767	
4 HEADBOARD LOCK TAB DOOR MAGNUM	2000307	
5 HINGE MAN DOOR HEADBOARD W/ GREASE FITTING	2000305	
6 HANDLE BOLT-ON HEADBOARD	2000173	
7 STEP SINGLE CAST AL HEADBOARD	2000172	
8 LOCK SPRING BOLT 3IN	2000003	
9 HEADBOARD NOSE CONE WHITE	2000631	
HEADBOARD NOSE CONE BLACK	2000837	

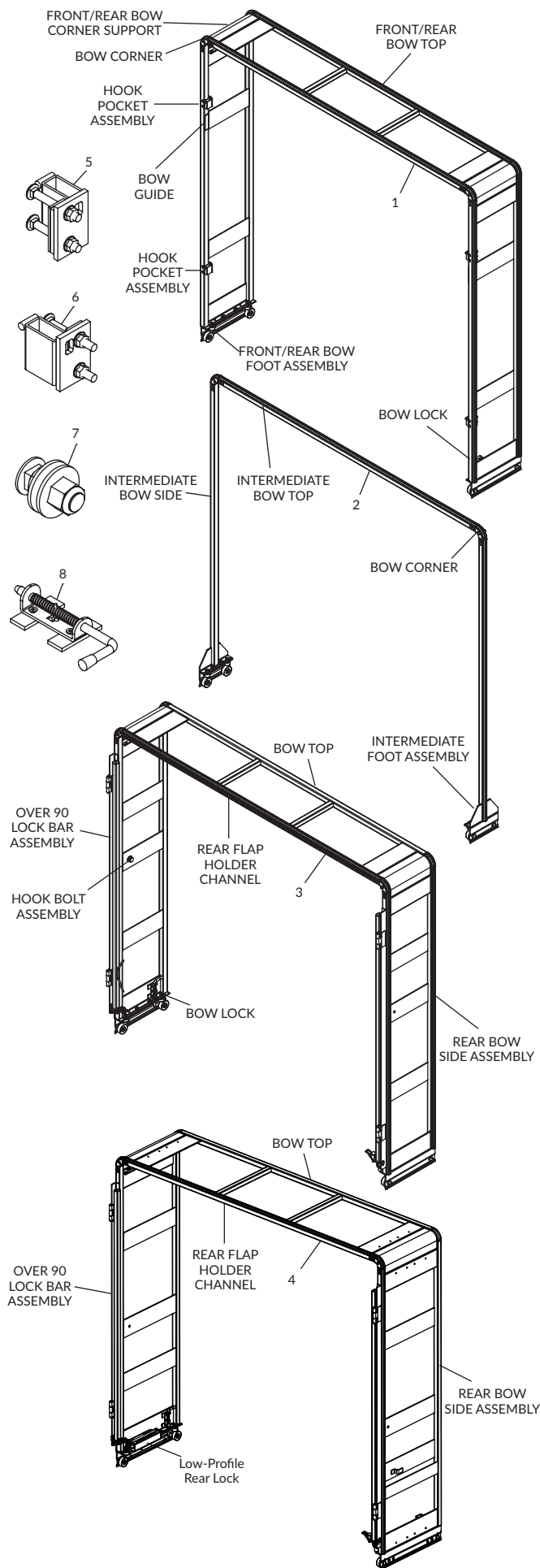


HEADBOARD ACCESSORIES/BOLTING

	DESCRIPTION	P/N	PRICE
1	HEADBOARD MOUNT KIT FASTENERS MAGNUM	2000125	
2	SEAL HEADBOARD 27FT MAGNUM	2000573	
3	DOOR SEAL HEADBOARD 15FT MAGNUM	2000625	
4	BOW GUIDE PLATE	2000180	
5	CHAIN BOX HEADBOARD 1 SIDE MAGNUM	2000310	
6	DUNNAGE RACK HEADBOARD MAGNUM	2000312	
7	UTILITY TRAY ASSY HEADBOARD MAGNUM	2000757	
8	TRACK GUARD HOLDER MAGNUM	2000936	



BOW ASSEMBLIES



	DESCRIPTION	P/N	PRICE
1	BOW FRONT ASSY 72H 108W MAGNUM	2000894	
	BOW FRONT ASSY 84H 108W MAGNUM	2000887	
	BOW FRONT ASSY 88H 108W MAGNUM	2002967	
	BOW FRONT ASSY 100H 108W MAGNUM	2000701	
	BOW FRONT ASSY 102H 108W MAGNUM	2002968	
	BOW FRONT ASSY 104H 108W MAGNUM	2002969	
2	BOW INTERMEDIATE ASSY 72H 108W MAG	2000527	
	BOW INTERMEDIATE ASSY 84H 108W MAG	2000502	
	BOW INTERMEDIATE ASSY 88H 108W MAG	2003238	
	BOW INTERMEDIATE ASSY 100H 108W MAG	2000162	
	BOW INTERMEDIATE ASSY 102H 108W MAG	2002971	
	BOW INTERMEDIATE ASSY 104H 108W MAG	2002972	
3	BOW REAR ASSY 72H 108W_MAG_OVER 90_WINDING BRACE	2000897	
	BOW REAR ASSY 84H 108W_MAG_OVER 90_WINDING BRACE	2000890	
	BOW REAR ASSY 88H 108W_MAG_OVER 90_WINDING BRACE	2002973	
	BOW REAR ASSY 100H 108W MAGNUM_OVER 90_WINDING BRACE	2000715	
	BOW REAR ASSY 102H 108W_MAG_OVER 90_WINDING BRACE	2002974	
	BOW REAR ASSY 104H 108W_MAG_OVER 90_WINDING BRACE	2002975	
	BOW REAR ASSY 72H 108W_MAG_VELCRO_WINDING BRACE	2001352	
	BOW REAR ASSY 84H 108W_MAG_VELCRO_WINDING BRACE	2001351	
	BOW REAR ASSY 88H 108W_MAG_VELCRO_WINDING BRACE	2002976	
	BOW REAR ASSY 100H 108W_MAG_VELCRO_WINDING BRACE	2001350	
	BOW REAR ASSY 102H 108W_MAG_VELCRO_WINDING BRACE	2002977	
	BOW REAR ASSY 104H 108W_MAG_VELCRO_WINDING BRACE	2002978	
4	BOW REAR ASSY 72H 108W_MAG_OVER 90_LOW PROFILE TENSIONER	2002984	
	BOW REAR ASSY 84H 108W_MAG_OVER 90_LOW PROFILE TENSIONER	2002985	
	BOW REAR ASSY 88H 108W_MAG_OVER 90_LOW PROFILE TENSIONER	2002986	
	BOW REAR ASSY 100H 108W_MAG_OVER 90_LOW PROFILE TENSIONER	2002987	
	BOW REAR ASSY 102H 108W_MAG_OVER 90_LOW PROFILE TENSIONER	2002988	
	BOW REAR ASSY 104H 108W_MAG_OVER 90_LOW PROFILE TENSIONER	2002989	
	BOW REAR ASSY 72H 108W_MAG_VELCRO_LOW PROFILE TENSIONER	2002979	
	BOW REAR ASSY 84H 108W_MAG_VELCRO_LOW PROFILE TENSIONER	2002980	
	BOW REAR ASSY 88H 108W_MAG_VELCRO_LOW PROFILE TENSIONER	2002981	
	BOW REAR ASSY 100H 108W_MAG_VELCRO_LOW PROFILE TENSIONER	2002840	
	BOW REAR ASSY 102H 108W_MAG_VELCRO_LOW PROFILE TENSIONER	2002982	
	BOW REAR ASSY 104H 108W_MAG_VELCRO_LOW PROFILE TENSIONER	2002983	
5	HOOK POCKET ASSY LT (2)	2000910	
6	HOOK POCKET ASSY RT (2)	2000911	
7	BOW LOCK SPRING BOLT ASSY FRONT/REAR MAGNUM	2000002	
8	HOOK BOLT ASSY	2000584	

BOW COMPONENTS

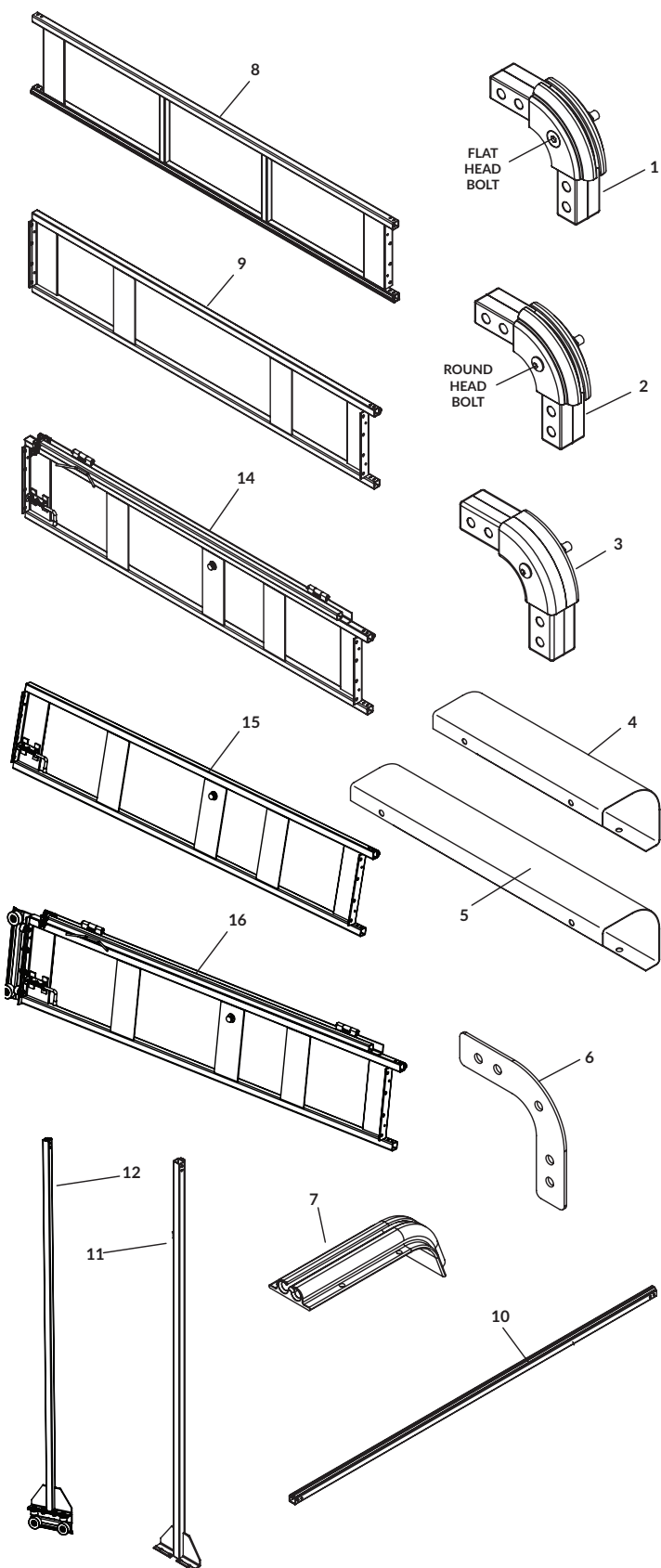
	DESCRIPTION	P/N	PRICE
1	CORNER CHANNEL TUBE FRONT/REAR ASSY	2000742	
2	CORNER CHANNEL TUBE INTERMEDIATE ASSY	2000004	
3	CORNER CAST SQUARE TUBE ASSY	2000746	
4	BOW CORNER SUPPORT FRONT/REAR 19.5	2000132	
5	BOW CORNER SUPPORT REAR 27.5	2002881	
6	CORNER SUPPORT CHANNEL TUBE BRACKET	2000131	
7	TARP HOLDER	2000005	

FRONT BOW COMPONENTS

	DESCRIPTION	P/N	PRICE
8	BOW TOP ASSY FRONT/REAR 19.5	2000745	
9	BOW SIDE ASSY FRONT LT 72H	2000896	
9	BOW SIDE ASSY FRONT LT 84H	2000889	
9	BOW SIDE ASSY FRONT LT 88H	2002990	
9	BOW SIDE ASSY FRONT LT 100H	2000748	
9	BOW SIDE ASSY FRONT LT 102H	2002991	
9	BOW SIDE ASSY FRONT LT 104H	2000992	
9	BOW SIDE ASSY FRONT RT 72H	2000895	
9	BOW SIDE ASSY FRONT RT 84H	2000888	
9	BOW SIDE ASSY FRONT RT 88H	2002993	
9	BOW SIDE ASSY FRONT RT 100H	2000747	
9	BOW SIDE ASSY FRONT RT 102H	2002994	
9	BOW SIDE ASSY FRONT RT 104H	2002995	

INTERMEDIATE BOW COMPONENTS

	DESCRIPTION	P/N	PRICE
10	BOW TOP CHANNEL TUBE	2000612	
11	BOW SIDE ASSY INTERMEDIATE 72H W/O FOOT	2000829	
11	BOW SIDE ASSY INTERMEDIATE 84H W/O FOOT	2000823	
11	BOW SIDE ASSY INTERMEDIATE 88H W/O FOOT	2003030	
11	BOW SIDE ASSY INTERMEDIATE 100H W/O FOOT	2000163	
11	BOW SIDE ASSY INTERMEDIATE 102H W/O FOOT	2003031	
11	BOW SIDE ASSY INTERMEDIATE 104H W/O FOOT	2003032	
12	BOW SIDE ASSY INTERMEDIATE 72H W/ FOOT	2000830	
12	BOW SIDE ASSY INTERMEDIATE 84H W/ FOOT	2000825	
12	BOW SIDE ASSY INTERMEDIATE 88H W/ FOOT	2003033	
12	BOW SIDE ASSY INTERMEDIATE 100H W/ FOOT	2000615	
12	BOW SIDE ASSY INTERMEDIATE 102H W/ FOOT	2003034	
12	BOW SIDE ASSY INTERMEDIATE 104H W/ FOOT	2003035	



REAR BOW ASSEMBLIES | OVER 90

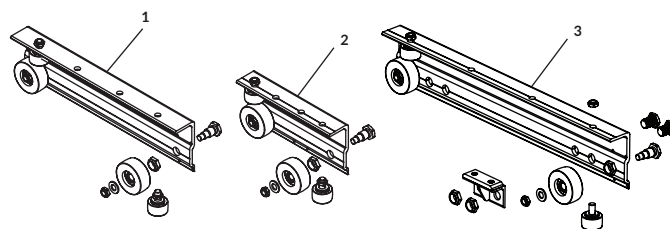
	DESCRIPTION	P/N	PRICE
8	BOW TOP ASSY FRONT/REAR 19.5	2000745	
13	BOW TOP ASSY REAR 24 LOW PROFILE TENSIONER	2002885	
14	BOW SIDE ASSY REAR LT 72H 19.5	2000899	
	W/OVER 90 BAR		
	BOW SIDE ASSY REAR LT 84H 19.5	2000901	
	W/OVER 90 BAR		
	BOW SIDE ASSY REAR LT 88H 19.5	2002996	
	W/OVER 90 BAR		
	BBOW SIDE ASSY REAR LT 100H 19.5	2000751	
	W/OVER 90 BAR		
	BOW SIDE ASSY REAR LT 102H 19.5	2002997	
	W/OVER 90 BAR		
	BOW SIDE ASSY REAR LT 104H 19.5	2002998	
	W/OVER 90 BAR		
	BOW SIDE ASSY REAR LT 72H 27.5	2003008	
	W/OVER 90 BAR		
	BOW SIDE ASSY REAR LT 84H 27.5	2003009	
	W/OVER 90 BAR		
	BOW SIDE ASSY REAR LT 88H 27.5	2003010	
	W/OVER 90 BAR		
	BOW SIDE ASSY REAR LT 100H 27.5	2003011	
	W/OVER 90 BAR		
	BOW SIDE ASSY REAR LT 102H 27.5	2003012	
	W/OVER 90 BAR		
	BOW SIDE ASSY REAR LT 104H 27.5	2003013	
	W/OVER 90 BAR		
	BOW SIDE ASSY REAR RT 72H 19.5	2000898	
	W/OVER 90 BAR		
	BOW SIDE ASSY REAR RT 84H 19.5	2000900	
	W/OVER 90 BAR		
	BOW SIDE ASSY REAR RT 88H 19.5	2002999	
	W/OVER 90 BAR		
	BOW SIDE ASSY REAR RT 100H 19.5	2000752	
	W/OVER 90 BAR		
	BOW SIDE ASSY REAR RT 102H 19.5	2003000	
	W/OVER 90 BAR		
	BOW SIDE ASSY REAR RT 104H 19.5	2003001	
	W/OVER 90 BAR		
	BOW SIDE ASSY REAR RT 72H 27.5	2003014	
	W/OVER 90 BAR		
	BOW SIDE ASSY REAR RT 84H 27.5	2003015	
	W/OVER 90 BAR		
	BOW SIDE ASSY REAR RT 88H 27.5	2003016	
	W/OVER 90 BAR		
	BOW SIDE ASSY REAR RT 100H 27.5	2003017	
	W/OVER 90 BAR		
	BOW SIDE ASSY REAR RT 102H 27.5	2003018	
	W/OVER 90 BAR		
	BOW SIDE ASSY REAR RT 104H 27.5	2003019	
	W/OVER 90 BAR		

REAR BOW ASSEMBLIES | OVER 90

	DESCRIPTION	P/N	PRICE
15	BOW SIDE ASSY REAR LT 72H 19.5	2001525	
	W/VELCRO		
	BOW SIDE ASSY REAR LT 84H 19.5	2001523	
	W/VELCRO		
	BOW SIDE ASSY REAR LT 88H 19.5	2003002	
	W/VELCRO		
	BBOW SIDE ASSY REAR LT 100H 19.5	2001521	
	W/VELCRO		
	BOW SIDE ASSY REAR LT 102H 19.5	2003003	
	W/VELCRO		
	BOW SIDE ASSY REAR LT 104H 19.5	2003004	
	W/VELCRO		
16	BOW SIDE ASSY REAR LT 72H 27.5	2003020	
	W/VELCRO		
	BOW SIDE ASSY REAR LT 84H 27.5	2003021	
	W/VELCRO		
	BOW SIDE ASSY REAR LT 88H 27.5	2003022	
	W/VELCRO		
	BOW SIDE ASSY REAR LT 100H 27.5	2002894	
	W/VELCRO		
	BOW SIDE ASSY REAR LT 102H 27.5	2003023	
	W/VELCRO		
	BOW SIDE ASSY REAR LT 104H 27.5	2003024	
	W/VELCRO		
15	BOW SIDE ASSY REAR RT 72H 19.5	2001526	
	W/VELCRO		
	BOW SIDE ASSY REAR RT 84H 19.5	2001524	
	W/VELCRO		
	BOW SIDE ASSY REAR RT 88H 19.5	2003005	
	W/VELCRO		
	BBOW SIDE ASSY REAR RT 100H 19.5	2001522	
	W/VELCRO		
	BOW SIDE ASSY REAR RT 102H 19.5	2003006	
	W/VELCRO		
	BOW SIDE ASSY REAR RT 104H 19.5	2003007	
	W/VELCRO		
16	BOW SIDE ASSY REAR RT 72H 27.5	2003025	
	W/VELCRO		
	BOW SIDE ASSY REAR RT 84H 27.5	2003026	
	W/VELCRO		
	BOW SIDE ASSY REAR RT 88H 27.5	2003027	
	W/VELCRO		
	BOW SIDE ASSY REAR RT 100H 27.5	2002889	
	W/VELCRO		
	BOW SIDE ASSY REAR RT 102H 27.5	2003028	
	W/VELCRO		
	BOW SIDE ASSY REAR RT 104H 27.5	2003029	
	W/VELCRO		

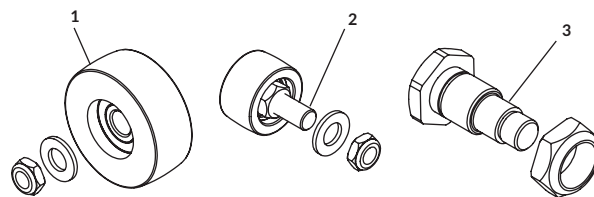
FOOT ASSEMBLIES

	DESCRIPTION	P/N	PRICE
1	FOOT FRONT/REAR ASSEMBLY	2000549	
2	FOOT INTERMEDIATE ASSEMBLY	2000601	
3	FOOT REAR ASSEMBLY		



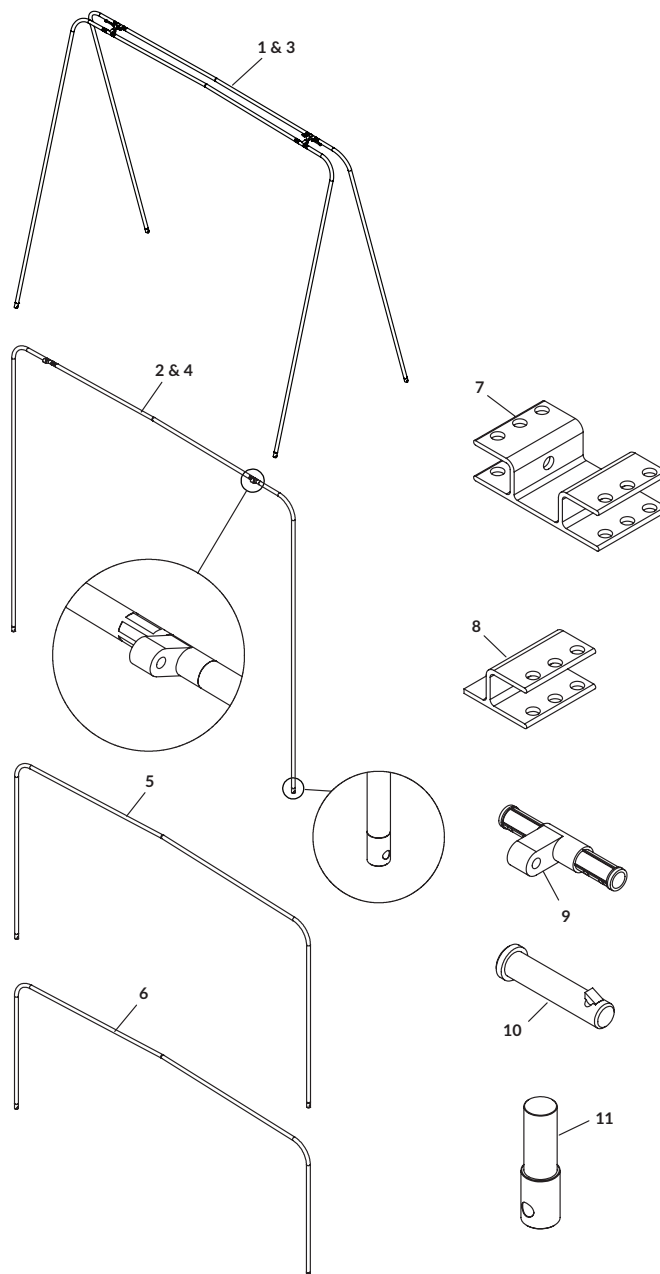
WHEELS AND AXLES

	DESCRIPTION	P/N	PRICE
1	WHEEL 3" W/ 1/2" WASHER/NUT	2002054	
2	WHEEL W/BEARING / AXLE 1/75 ASSEMBLY	2000000	
3	AXLE 3" WHEEL AND 3/4" NUT	2002058	



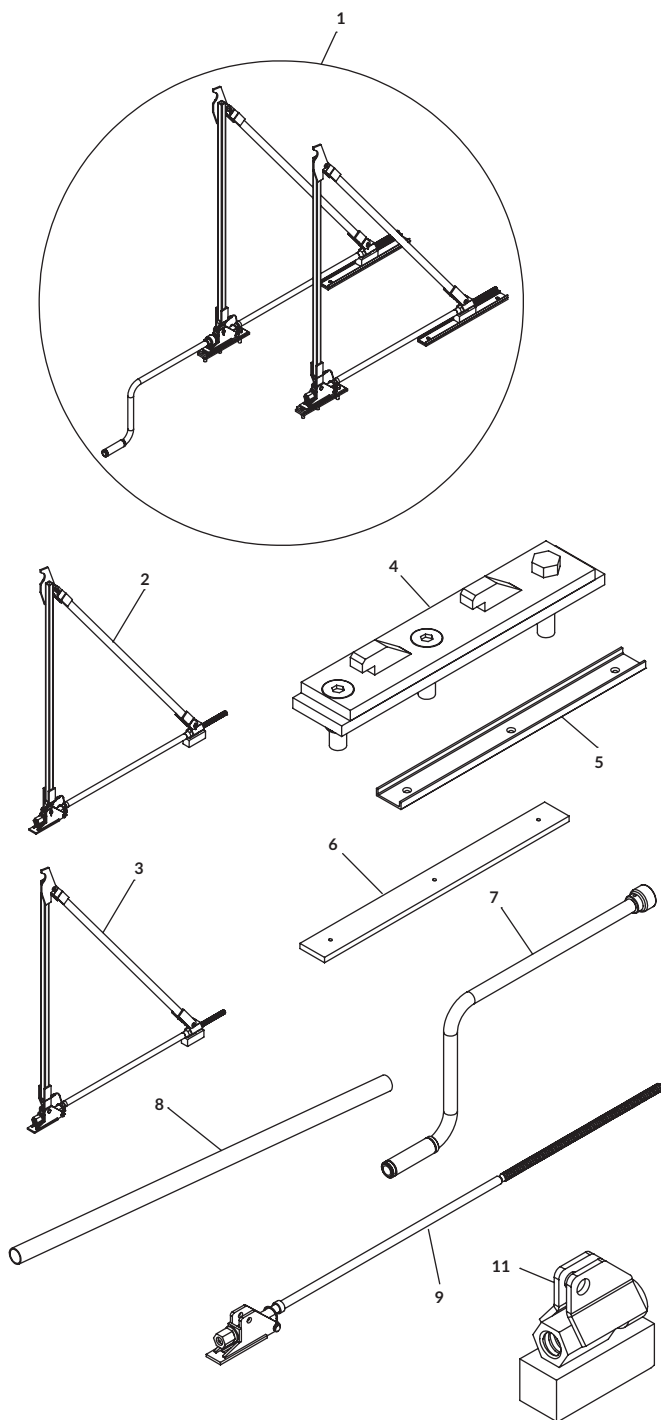
HINGE LIFTERS

	DESCRIPTION	P/N	PRICE
1	LIFTER HINGED ASSEMBLY 84H	2000783	
2	LIFTER HINGED SIDE ASSEMBLY 84H	2001136	
3	LIFTER HINGED ASSEMBLY 100H	2000155	
4	LIFTER HINGED SIDE ASSEMBLY 100H	2000561	
5	LIFTER 1 PC ASSEMBLY 230IN TUBE	2000154	
6	LIFTER EXTRA ASSEMBLY 108W	2000506	
7	LIFTER 2 LIFTER BRACKET	2000151	
8	LIFTER HALF 2 LIFTER BRACKET RT	2000835	
9	HINGE LIFTER MID CONNECTOR AL/PLASTIC	2000156	
10	PIN LIFTER LEG MOUNT (SLIC PIN ZINC)	2001179	
11	LIFTER SIDE CONNECTOR	2000148	



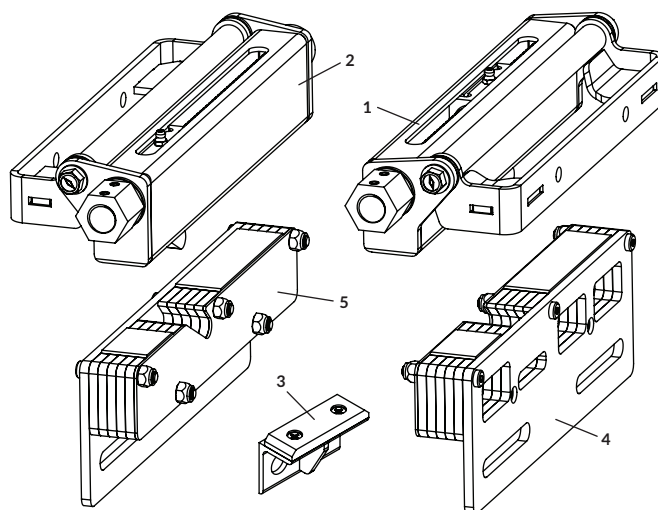
WINDING BRACES

	DESCRIPTION	P/N	PRICE
1	WINDING BRACE ASSY 91-104 (BOTH W/CRANK)	2000585	
	WINDING BRACE ASSY 91-104 (BOTH W/CRANK)	2000587	
2	WINDING BRACE LT 92-104	2000066	
	WINDING BRACE LT 60-91	2000072	
3	WINDING BRACE RT 92-104	2000071	
	WINDING BRACE RT 60-91	2000073	
4	BASE FIXED ASSY LT/RT AL	2000063	
	BASE FIXED ASSY LT/RT STL	2002159	
5	WINDING BRACE SLIDE GUIDE STL	2000061	
6	WINDING BRACE SLIDE GUIDE MNT PLATE AL	2000062	
	WINDING BRACE SLIDE GUIDE MNT PLATE STL	2000428	
7	CRANK ASSY SOCKET HEAD	2000213	
	CRANK ARM ASSY	2002880	
8	WINDING BRACE STROKE LIMITER	2000756	
9	WINDING BRACE THREAD ROD/PIVOT ASSY 91-104	2001070	
	WINDING BRACE THREAD ROD/PIVOT ASSY 60-91	2001116	
10	WINDING BRACE SUPPORT TUBE ASSY LT 91-104	2000754	
	WINDING BRACE SUPPORT TUBE ASSY RT 91-104	2000755	
	WINDING BRACE SUPPORT TUBE ASSY LT 60-91	2001119	
	WINDING BRACE SUPPORT TUBE ASSY RT 60-91	2001120	
11	WINDING BRACE NUT ASSY	2000753	



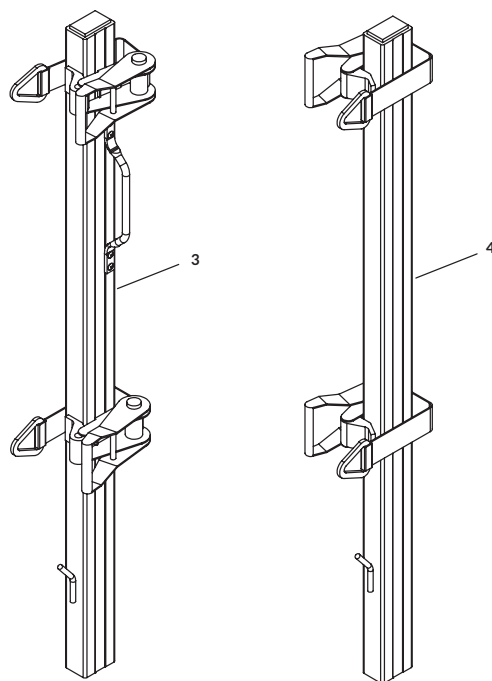
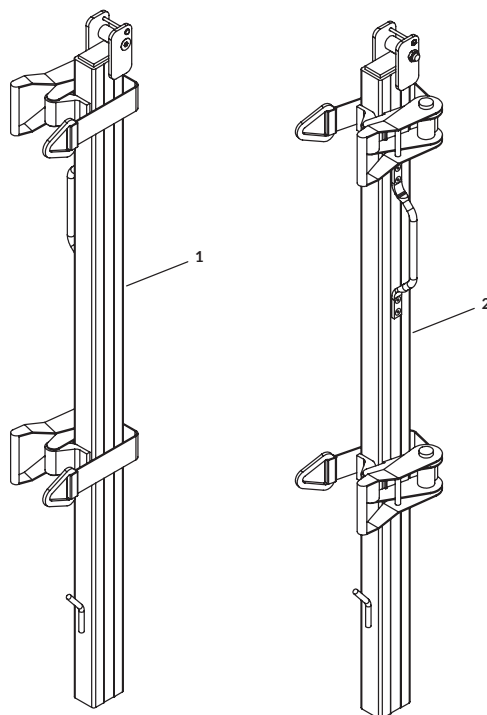
LOW PROFILE REAR TENSIONER

DESCRIPTION	P/N	PRICE
LOW PROFILE REAR TENSION KIT (LT/RT ASSEMBLIES)	2002877	
1 TENSIONER ASSEMBLY RT	2002875	
2 TENSIONER ASSEMBLY LT	2002870	
3 BOW GLIDE ASSEMBLY	2002849	
4 HOOK ASSEMBLY RT	2002876	
5 HOOK ASSEMBLY LT	2002871	



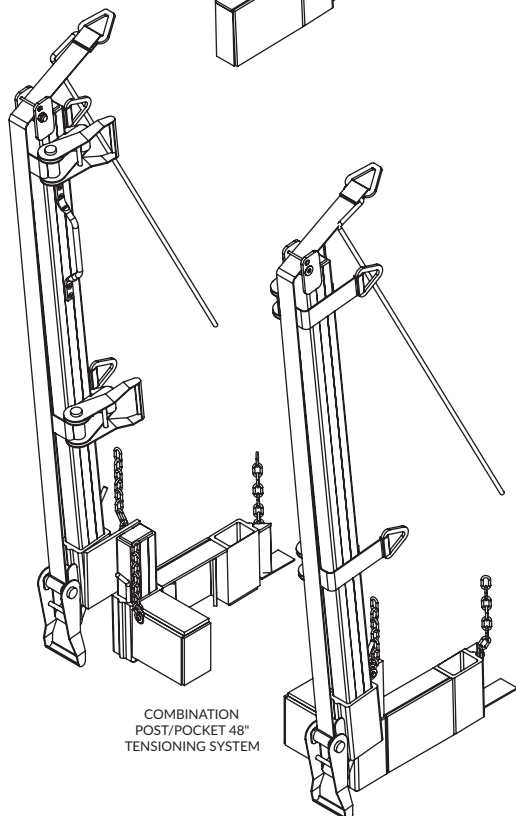
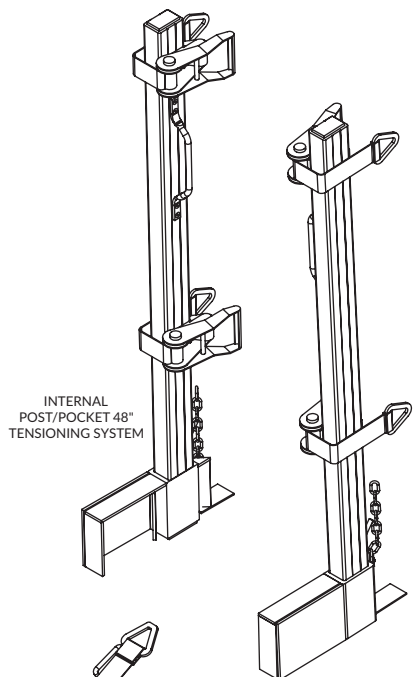
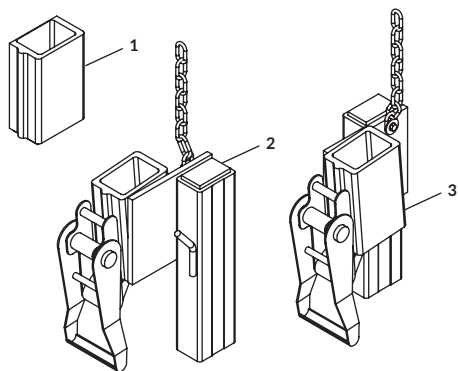
POSTS | COMBINATION/INTERNAL ASSEMBLIES

DESCRIPTION	P/N	PRICE
1 POST COMBO 48 ASSEMBLY LT	2000592	
2 POST COMBO 48 ASSEMBLY RT	2000591	
3 POST RATCHET INTERNAL 48 ASSEMBLY LT	2001128	
4 POST RATCHET INTERNAL 48 ASSEMBLY RT	2001127	



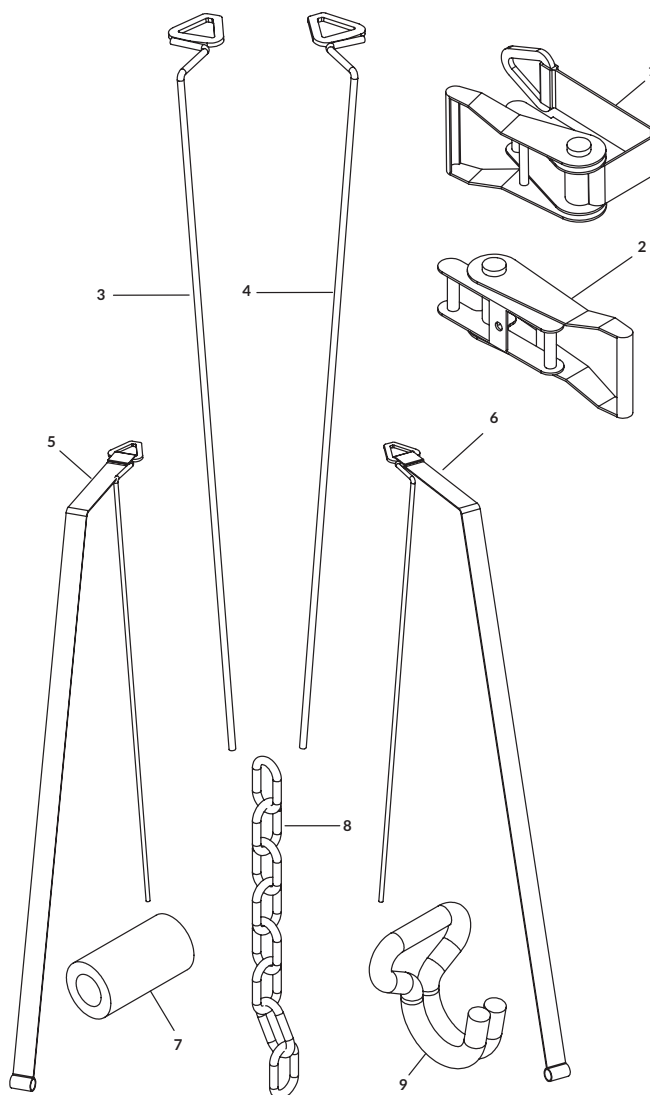
POSTS/POCKET ASSEMBLIES

	DESCRIPTION	P/N	PRICE
1	3 SIDE POCKET WELDMENT AL	2000738	
2	POCKET COMBO LT ASSEMBLY	2000706	
3	POCKET COMBO RT ASSEMBLY	2000707	



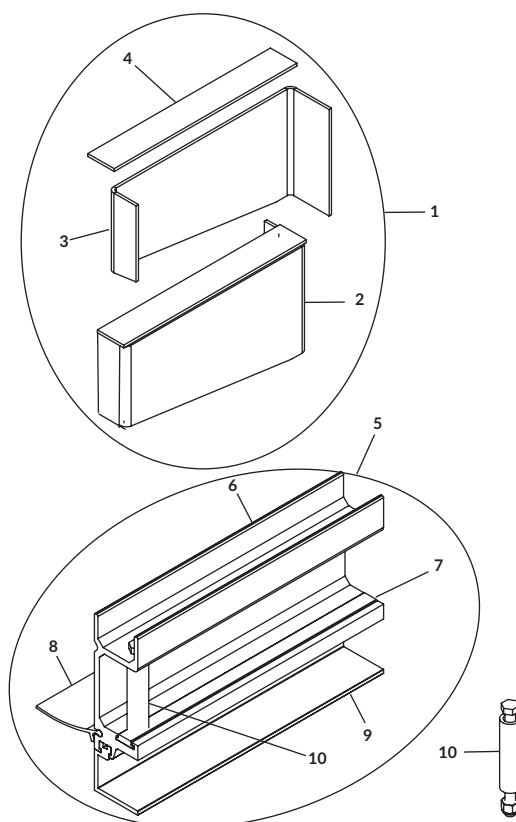
POST RATCHET/ACCESSORIES

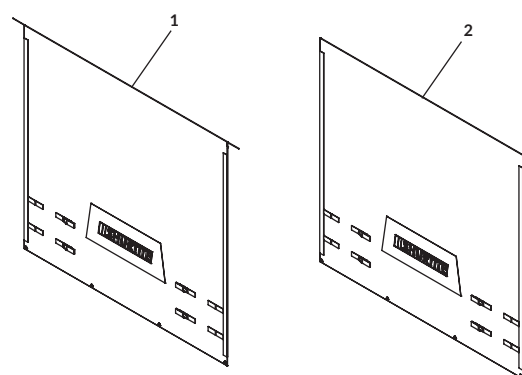
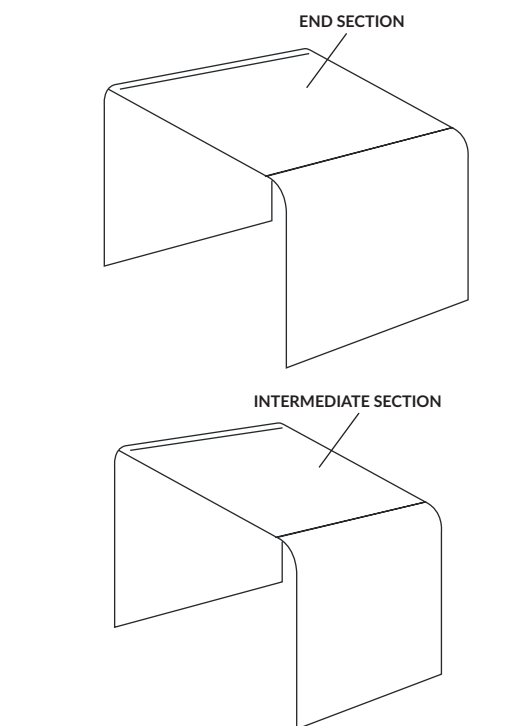
	DESCRIPTION	P/N	PRICE
1	RATCHET 2 x 32IN W/DELTA RING	2000006	
2	RATCHET 2IN REVERSIBLE	2000008	
3	HANDLE GRD CLSG RT	2000352	
4	HANDLE GRD CLSG LT	2000353	
5	HANDLE ASSY GRD CLSG W/STRAP RT	2000600	
6	HANDLE ASSY GRD CLSG W/STRAP LT	2000599	
7	RATCHET POST ROLLER	2000057	
8	CHAIN REAR POCKET (8 EYES)	2000040	
9	HOOK WIRE 2IN 7/16 WIRE	2000688	



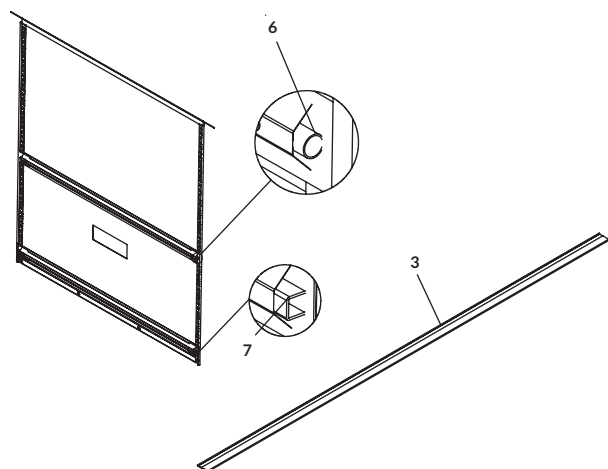
POST RATCHET/ACCESSORIES

	DESCRIPTION	P/N	PRICE
1	CORNER BUILD-OUT FRONT STANDARD AL ASSY	2000907	
	CORNER BUILD-OUT FRONT STANDARD STL ASSY	2001205	
2	BUILD-OUT FRONT CORNER AL RT	2000111	
	BUILD-OUT FRONT CORNER STL RT	2000115	
3	BUILD-OUT FRONT CORNER AL LT	2000112	
	BUILD-OUT FRONT CORNER STL LT	2000116	
4	BUILD-OUT FRONT CORNER COVER AL	2000906	
	BUILD-OUT FRONT CORNER COVER STL	2001206	
5	TRACK ASSY 48' 1 SIDE ONLY	2000604	
6	EXTRUSION TRACK 48' AL	2000120	
7	TRACK INSERT PLASTIC 8'	2000222	
8	SEAL TRACK RUBBER 2.5 1 BOX = 106'	2000117	
9	TRACK AIR DEFLECTOR 8'	2000229	
10	TRACK END STOP ASSEMBLY	2000639	
	TRACK ASSY PER FOOT	2000958	





DRAWINGS #4 & 5
COMING SOON



TARP END SECTION

	DESCRIPTION	P/N	PRICE
1	74H		
2	84H		
3	88H		
4	100H		
5	102H		
6	104H		

TARP INTERMEDIATE SECTION

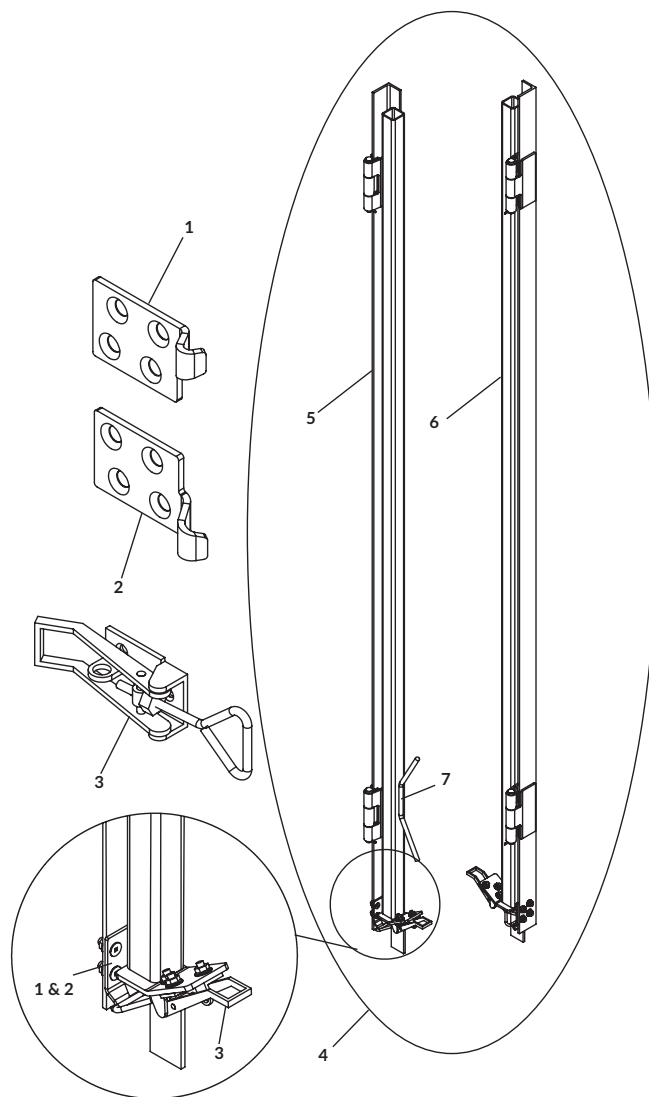
	DESCRIPTION	P/N	PRICE
1	74H		
2	84H		
3	88H		
4	100H		
5	102H		
6	104H		

TARP INTERMEDIATE SECTION

	DESCRIPTION	P/N	PRICE
1	REAR FLAP VELCRO W/D-RING 72H X 108W		
	REAR FLAP VELCRO W/D-RING 84H X 108W		
	REAR FLAP VELCRO W/D-RING 88H X 108W		
	REAR FLAP VELCRO W/D-RING 100H X 108W	2001164	
	REAR FLAP VELCRO W/D-RING 102H X 108W		
	REAR FLAP VELCRO W/D-RING 104H X 108W		
2	REAR FLAP ASSEMBLY ROPE 72H X 108W		
	REAR FLAP ASSEMBLY ROPE 84H X 108W		
	REAR FLAP ASSEMBLY ROPE 88H X 108W		
	REAR FLAP ASSEMBLY ROPE 100H X 108W	2000634	
	REAR FLAP ASSEMBLY ROPE 102H X 108W		
	REAR FLAP ASSEMBLY ROPE 104H X 108W		
3	REAR FLAP VISOR ASSEMBLY OVER 90	2000029	
	REAR FLAP VISOR ASSEMBLY VELCRO	2000775	
4	REAR FLAP W/ATTACHED VISOR VELCRO W/D-RING 72H X 108W		
	REAR FLAP W/ATTACHED VISOR VELCRO W/D-RING 84H X 108W		
	REAR FLAP W/ATTACHED VISOR VELCRO W/D-RING 84H X 108W		
	REAR FLAP W/ATTACHED VISOR VELCRO W/D-RING 100H X 108W		
	REAR FLAP W/ATTACHED VISOR VELCRO W/D-RING 102H X 108W		
	REAR FLAP W/ATTACHED VISOR VELCRO W/D-RING 104H X 108W		
5	REAR FLAP W/ATTACHED VISOR ROPE 72 X 108W		
	REAR FLAP W/ATTACHED VISOR ROPE 84 X 108W		
	REAR FLAP W/ATTACHED VISOR ROPE 88 X 108W		
	REAR FLAP W/ATTACHED VISOR ROPE 100 X 108W		
	REAR FLAP W/ATTACHED VISOR ROPE 102 X 108W		
	REAR FLAP W/ATTACHED VISOR ROPE 104 X 108W		
6	REAR FLAP PIPE STL RND DIA 104.5IN LG	2000264	
7	REAR FLAP TUBE STL SQ 104.5IN LG	2000364	

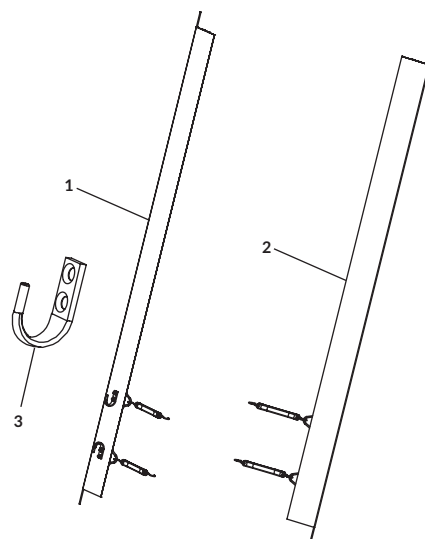
OVER 90 BAR

	DESCRIPTION	P/N	PRICE
1	OVER 90 STRIKER CLAMP LT	2000344	
2	OVER 90 STRIKER CLAMP RT	2000343	
3	OVER 90 LOCKING CLAMP	2001142	
4	OVER 90 BAR ASSY 100H (BOTH)	2000633	
5	OVER 90 BAR ASSY 72H LT	2000999	
	OVER 90 BAR ASSY 84H LT	2001006	
	OVER 90 BAR ASSY 88H LT	2003146	
	OVER 90 BAR ASSY 100H LT	2000037	
	OVER 90 BAR ASSY 102H LT	2003147	
	OVER 90 BAR ASSY 104H LT	2003148	
6	OVER 90 BAR ASSY 72H RT	2000997	
	OVER 90 BAR ASSY 84H RT	2001005	
	OVER 90 BAR ASSY 88H RT	2003149	
	OVER 90 BAR ASSY 100H RT	2000036	
	OVER 90 BAR ASSY 102H RT	2003150	
	OVER 90 BAR ASSY 104H RT	2003151	
7	OVER 90 ROPE HOLDER	2000341	



VELCRO WINGS

	DESCRIPTION	P/N	PRICE
1	WING VELCRO ASSY LT 72H W/BUNGEE W/HOOKS		
	WING VELCRO ASSY LT 84H W/BUNGEE W/HOOKS		
	WING VELCRO ASSY LT 88H W/BUNGEE W/HOOKS		
	WING VELCRO ASSY LT 100H W/BUNGEE W/HOOKS	2001163	
	WING VELCRO ASSY LT 102H W/BUNGEE W/HOOKS		
	WING VELCRO ASSY LT 104H W/BUNGEE W/HOOKS		
	WING VELCRO ASSY LT 72H W/BUNGEE W/O HOOK		
	WING VELCRO ASSY LT 84H W/BUNGEE W/O HOOK		
	WING VELCRO ASSY LT 88H W/BUNGEE W/O HOOK		
	WING VELCRO ASSY LT 100H W/BUNGEE W/O HOOK	2001472	
	WING VELCRO ASSY LT 102H W/BUNGEE W/O HOOK		
	WING VELCRO ASSY LT 104H W/BUNGEE W/O HOOK		
2	WING VELCRO ASSY RT 72H W/BUNGEE		
	WING VELCRO ASSY RT 84H W/BUNGEE		
	WING VELCRO ASSY RT 88H W/BUNGEE		
	WING VELCRO ASSY RT 100H W/BUNGEE	2001162	
	WING VELCRO ASSY RT 102H W/BUNGEE		
	WING VELCRO ASSY RT 104H W/BUNGEE		
3	ROPE HOOK	2000452	



REAR FLAP CRANKS

	DESCRIPTION	P/N	PRICE
1	CRANK REAR FLAP 1 PC W/3 PC HOLDER	2000613	
2	CRANK REAR FLAP 2 PC W/3 PC HOLDER	2001613	
3	CRANK REAR FLAP 1 PC W/U-JOINT ASSY	2000988	
	CRANK REAR FLAP ARM 1 PC (NOT SHOWN)	2000986	
4	CRANK REAR FLAP 2 PC W/U-JOINT ASSY	2001553	
	CRANK REAR FLAP ARM SHORT W/HANDEL (NOT SHOWN)	2001550	
	CRANK REAR FLAP ARM EXTENSION (NOT SHOWN)	1107838	
5	CRANK REAR FLAP 3 PIECE HOLDER	2002148	
6	CRANK REAR FLAP U-JOINT W/PIN	1107722	
7	BUNGEE 9IN LG	2000366	

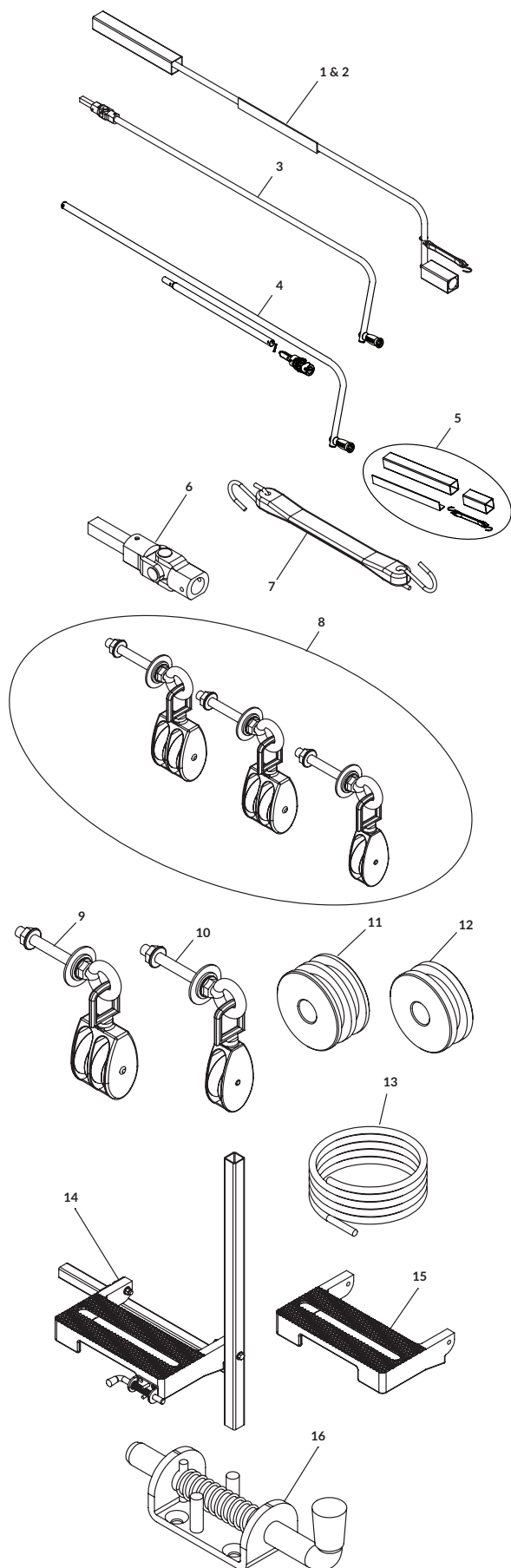
REAR FLATP PULLEY

	DESCRIPTION	P/N	PRICE
8	PULLEY SWIVEL EYE 3 PC	2001348	
9	PULLEY DOUBLE SWIVEL EYE W/BOLT ASSY	2001347	
10	PULLEY SINGLE SWIVEL EYE W/BOLT ASSY	2001346	
11	PULLEY DOUBLE TRACK	2000010	
12	PULLEY SINGLE TRACK	2000012	
13	ROPE REAR FLAP 1/4 SOLID BRAID NYLON*	2000013	

*Rear flap assembly requires 75' of rope.

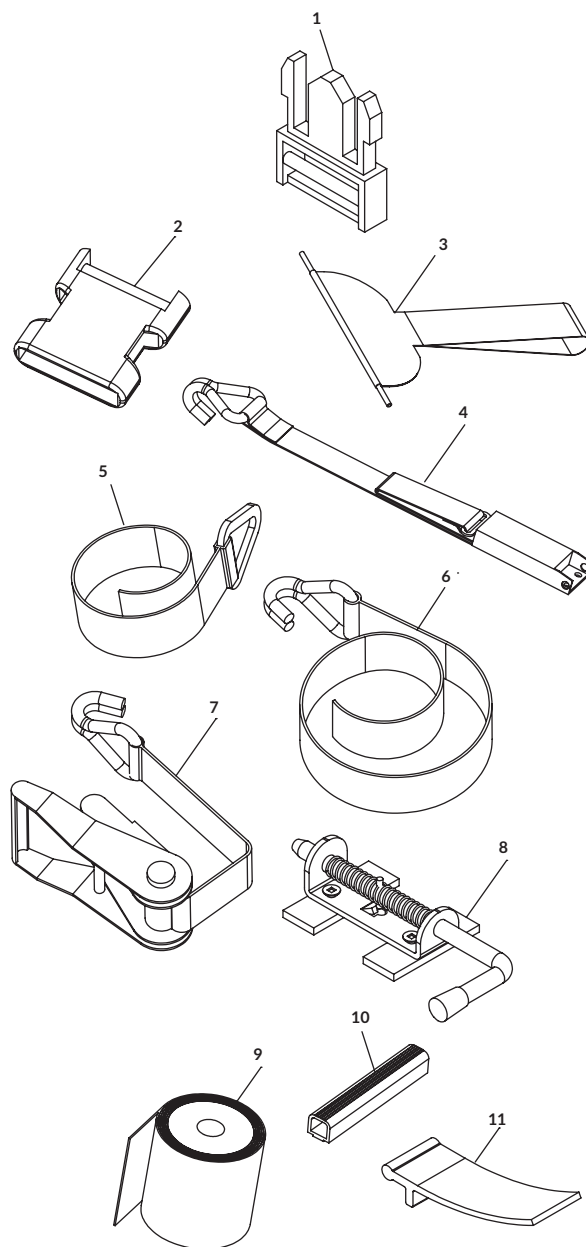
REAR STEPS

	DESCRIPTION	P/N	PRICE
14	STEP REAR ASSY AL LT	2000530	
	STEP REAR ASSY AL RT	2000529	
15	STEP DOUBLE AL	2000023	
16	LOCK SPRING BOLT 3IN	2000003	



MISCELLANEOUS

	DESCRIPTION	P/N	PRICE
1	BUCKLE MALE 1-1/2 PLASTIC BLACK	2000016	
2	BUCKLE FEMALE 1-1/2 PLASTIC BLACK	2000015	
3	HANDLE STRAP TARP MAG	2000035	
4	OVERCENTER BUCKLE STAINLESS STEEL	2000649	
5	STRAP CARGO - 2 x 40IN W/ DELTA RING	2000017	
6	STRAP CARGO - 2 x 40IN W/ HOOK 7/16	2000018	
7	RATCHET - 2 X 32IN W/ HOOK 7/16	2000007	
8	BOW LOCK SPRING BOLT ASSY	2000002	
9	TARP REPAIR TAPE - BLACK 50FT PER ROLL	2001131	
10	SEAL-D HEADBOARD PER FT MAGNUM	2000169	
11	SEAL TRACK RUBBER 2.5 1 BOX = 106FT MAGNUM	2000117	



FLATBED TRAILER MEASUREMENT SHEET

Shurco™ tarps are custom-made to order and are non-returnable, so the correct physical measurements are essential for proper tarp fit. Be sure to provide all requested information or your order may be delayed. Do NOT use universal body or trailer sizes. Instead, use ACTUAL MEASUREMENTS provided in INCHES.

Use diagram below to help determine correct measurements for ordering. Trailer **MUST BE AIRED UP** and hooked to the truck or the fifth-wheel height set to 48" from the ground BEFORE taking measurements. Width of deck is from outside rub rail to outside rub rail. Additional information needed is noted on reverse side.

CONTACT INFORMATION

NAME _____

ADDRESS _____

EMAIL _____

CITY _____ STATE _____ ZIP _____

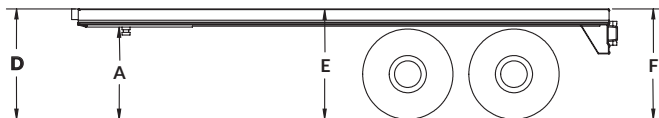
PHONE _____ FAX _____

BOX/TRAILER MAKE _____

MODEL _____ YEAR _____

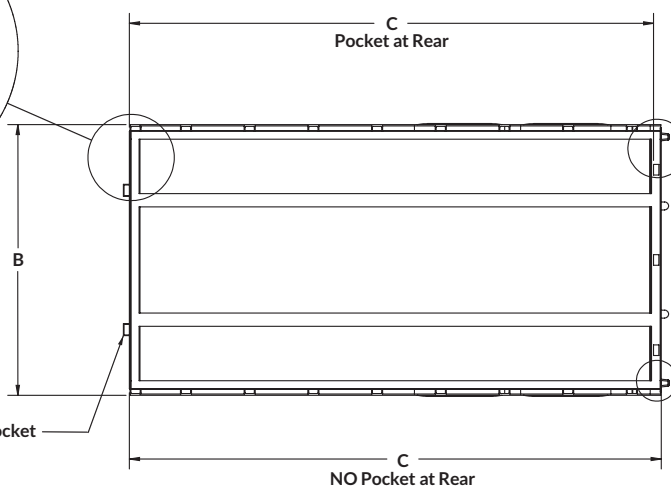
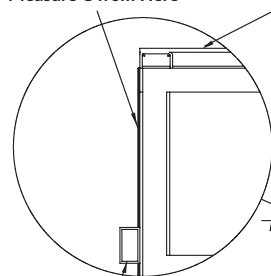
TRAILER VIN # (Last 5 Digits) _____

DOT NUMBER _____



Measure C from Here

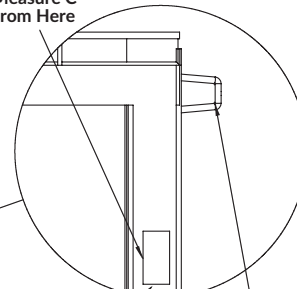
Measure B from Here



Do NOT Measure Pocket

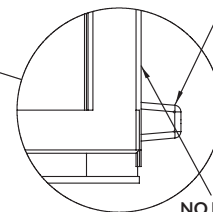
NO Pocket at Rear

With Pocket,
Measure C
from Here



BUMPER

STAKE POCKET
IN REAR SILL



NO Pocket,
Measure C
from Here

I hereby certify that these measurements are accurate. I accept responsibility for any and all inaccurate measurements. I understand that I will be held financially responsible for any and all costs incurred with the production of my system based on these given measurements.

SIGNATURE _____ TITLE _____

TRACK: ☐ MAGNUM ☐ TITETRAX™

(• STANDARD PARTS)

EXTRA OPTIONS

- ☐ EXTRA LIFTERS
- ☐ QUAD LIFTERS
- ☐ REAR STEP
 - PASSENGER SIDE ☐ STL OR ☐ AL
 - DRIVER SIDE ☐ STL OR ☐ AL
- ☐ FRONT BUILD-OUT - 8"
- ☐ FOLDING TRACK EXTENSION
- ☐ TRACK GUARD (Magnum ONLY)
- ☐ STAINLESS STEEL LIGHT BAR

TRAILER ADDITIONS

- ☐ REUSING TRACK
- ☐ LOWERING ADDITIONAL LIGHTS
 - EXCLUDES CORNER, MARKER & ABS
- ☐ REMOVING OLD TARP SYSTEM
- ☐ ADDITIONAL TRAILER WORK

SYSTEM HEIGHT (Choose One)

- ☐ 104" STANDARD (102" Inside Height)
- ☐ 102" STANDARD (100" Inside Height)
- ☐ 100" STANDARD (98" Inside Height)
- ☐ 88" STANDARD (86" Inside Height)
- ☐ 84" STANDARD (82" Inside Height)
- ☐ 72" STANDARD (70" Inside Height)
- ☐ OTHER _____

HEADBOARD ADDITIONS

- ☐ RE-USING HEADBOARD
- ☐ MAN DOOR
- ☐ CHAIN BOXES ☐ 1 OR ☐ 2
- ☐ DUNNAGE RACKS ☐ 1 OR ☐ 2
- ☐ UTILITY TRAY
- ☐ NOSE CONE ☐ WHITE OR ☐ BLACK
- ☐ INSIDE FLOOD LIGHTS
- ☐ ADDITIONAL HEADBOARD LIGHTS - 5 Total

TARP

- ☐ COLOR _____
- ☐ GRAPHICS

BACK FLAP OPENING OPTIONS (Choose One)

- ☐ ROPE & PULLEY
- ☐ CRANK ARM

BACK FLAP CLOSURE OPTIONS (Choose One)

- ☐ OVER 90° BARS
- ☐ VELCRO® WINGS

TENSIONING SYSTEM

- ☐ WINDING BRACE
- ☐ POST & RATCHET
- ☐ LOW PROFILE REAR LOCK

ADDITIONAL NOTES

I hereby certify that these measurements are accurate. I accept responsibility for any and all inaccurate measurements. I understand that I will be held financially responsible for any and all costs incurred with the production of my system based on these given measurements.

SIGNATURE _____ TITLE _____

DROP DECK TRAILER MEASUREMENT SHEET

Shurco™ tarps are custom-made to order and are non-returnable, so the correct physical measurements are essential for proper tarp fit. Be sure to provide all requested information or your order may be delayed. Do NOT use universal body or trailer sizes. Instead, use ACTUAL MEASUREMENTS provided in INCHES.

Use diagram below to help determine correct measurements for ordering. Trailer **MUST BE AIRED UP** and hooked to the truck or the fifth-wheel height set to 48" from the ground BEFORE taking measurements. Width of deck is from outside rub rail to outside rub rail. Additional information needed is noted on reverse side.

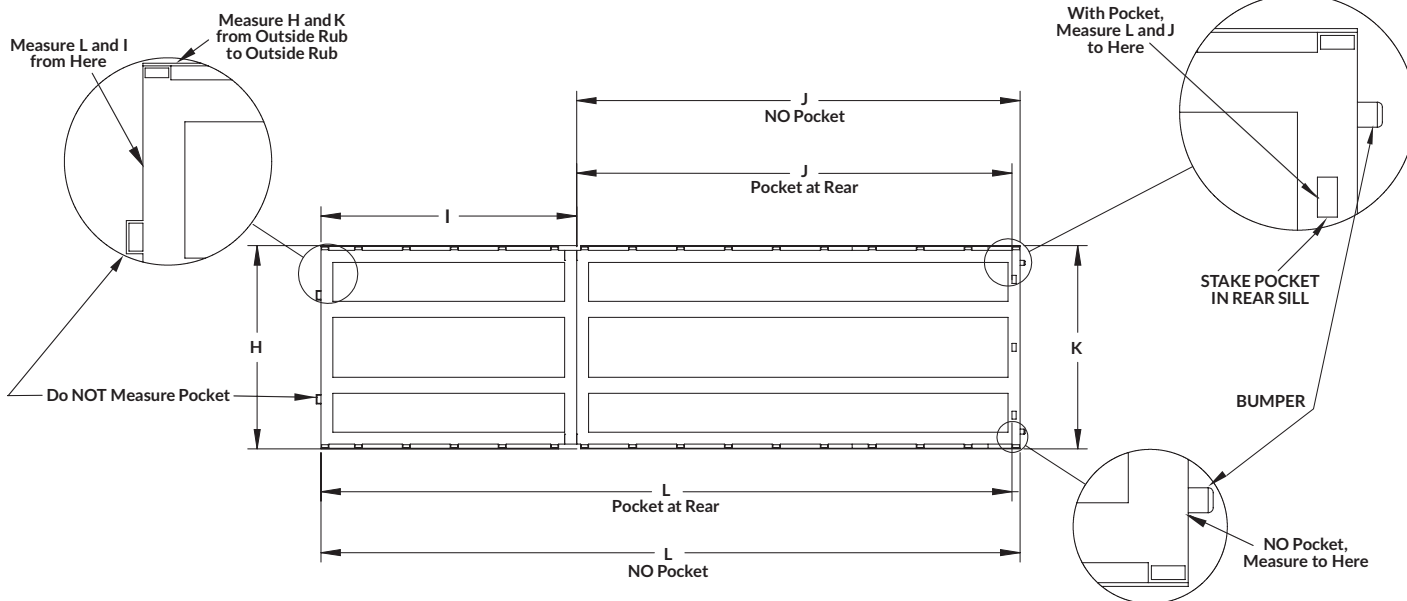
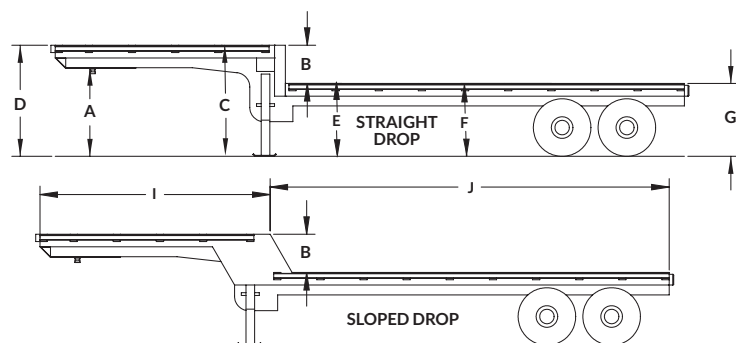
CONTACT INFORMATION

NAME _____
 ADDRESS _____
 EMAIL _____
 CITY _____ STATE _____ ZIP _____
 PHONE _____ FAX _____
 BOX/TRAILER MAKE _____
 MODEL _____ YEAR _____
 TRAILER VIN # (Last 5 Digits) _____
 DOT NUMBER _____

TRAILER DIMENSIONS

A _____ FIFTH WHEEL
 B _____ DROP HEIGHT
 C _____ TOP DECK REAR HEIGHT
 D _____ TOP DECK FRONT HEIGHT
 E _____ LOWER DECK FRONT HEIGHT
 F _____ LOWER DECK MID HEIGHT
 G _____ LOWER DECK REAR HEIGHT
 H _____ UPPER DECK WIDTH
 I _____ UPPER DECK LENGTH
 J _____ LOWER DECK LENGTH
 K _____ LOWER DECK WIDTH
 L _____ TOTAL TRAILER LENGTH

RUB RAIL ☐ STEEL ☐ ALUMINUM



I hereby certify that these measurements are accurate. I accept responsibility for any and all inaccurate measurements. I understand that I will be held financially responsible for any and all costs incurred with the production of my system based on these given measurements.

SIGNATURE _____ TITLE _____

DROP DECK TRAILER MEASUREMENT SHEET

TRACK: ☐ MAGNUM ☐ TITETRAX™

(• STANDARD PARTS)

EXTRA OPTIONS

- ☐ EXTRA LIFTERS
- ☐ QUAD LIFTERS
- ☐ REAR STEP
 - PASSENGER SIDE ☐ STL OR ☐ AL
 - DRIVER SIDE ☐ STL OR ☐ AL
- ☐ FRONT BUILD-OUT - 8"
- ☐ FOLDING TRACK EXTENSION
- ☐ TRACK GUARD (Magnum ONLY)
- ☐ STAINLESS STEEL LIGHT BAR

TRAILER ADDITIONS

- ☐ REUSING TRACK
- ☐ LOWERING ADDITIONAL LIGHTS
 - EXCLUDES CORNER, MARKER & ABS
- ☐ REMOVING OLD TARP SYSTEM
- ☐ ADDITIONAL TRAILER WORK

SYSTEM HEIGHT

- ☐ MAXIMUM HEIGHT _____
- ☐ REQUIRED HEIGHT _____
- ☐ OTHER _____

ADDITIONAL NOTES

HEADBOARD ADDITIONS

- ☐ RE-USING HEADBOARD
- ☐ STAINLESS STEEL WRAP
- ☐ MAN DOOR
- ☐ CHAIN BOXES ☐ 1 OR ☐ 2
- ☐ DUNNAGE RACKS ☐ 1 OR ☐ 2
- ☐ UTILITY TRAY
- ☐ NOSE CONE ☐ WHITE OR ☐ BLACK
- ☐ INSIDE FLOOD LIGHTS
- ☐ ADDITIONAL HEADBOARD LIGHTS - 5 Total

TARP

- ☐ COLOR _____
- ☐ GRAPHICS

BACK FLAP OPENING OPTIONS (Choose One)

- ☐ ROPE & PULLEY
- ☐ CRANK ARM

BACK FLAP CLOSURE OPTIONS (Choose One)

- ☐ OVER 90° BARS
- ☐ VELCRO® WINGS

TENSIONING SYSTEM

- ☐ WINDING BRACE
- ☐ POST & RATCHET
- ☐ LOW PROFILE REAR LOCK

I hereby certify that these measurements are accurate. I accept responsibility for any and all inaccurate measurements. I understand that I will be held financially responsible for any and all costs incurred with the production of my system based on these given measurements.

SIGNATURE _____ TITLE _____

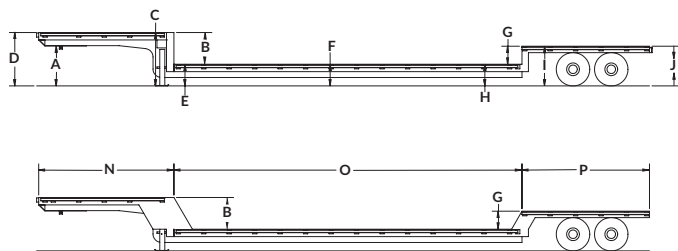
DOUBLE DROP DECK TRAILER MEASUREMENT SHEET

Shurco™ tarps are custom-made to order and are non-returnable, so the correct physical measurements are essential for proper tarp fit. Be sure to provide all requested information or your order may be delayed. Do NOT use universal body or trailer sizes. Instead, use ACTUAL MEASUREMENTS provided in INCHES.

Use diagram below to help determine correct measurements for ordering. Trailer **MUST BE AIRED UP** and hooked to the truck or the fifth-wheel height set to 48" from the ground BEFORE taking measurements. Width of deck is from outside rub rail to outside rub rail. Additional information needed is noted on reverse side.

CONTACT INFORMATION

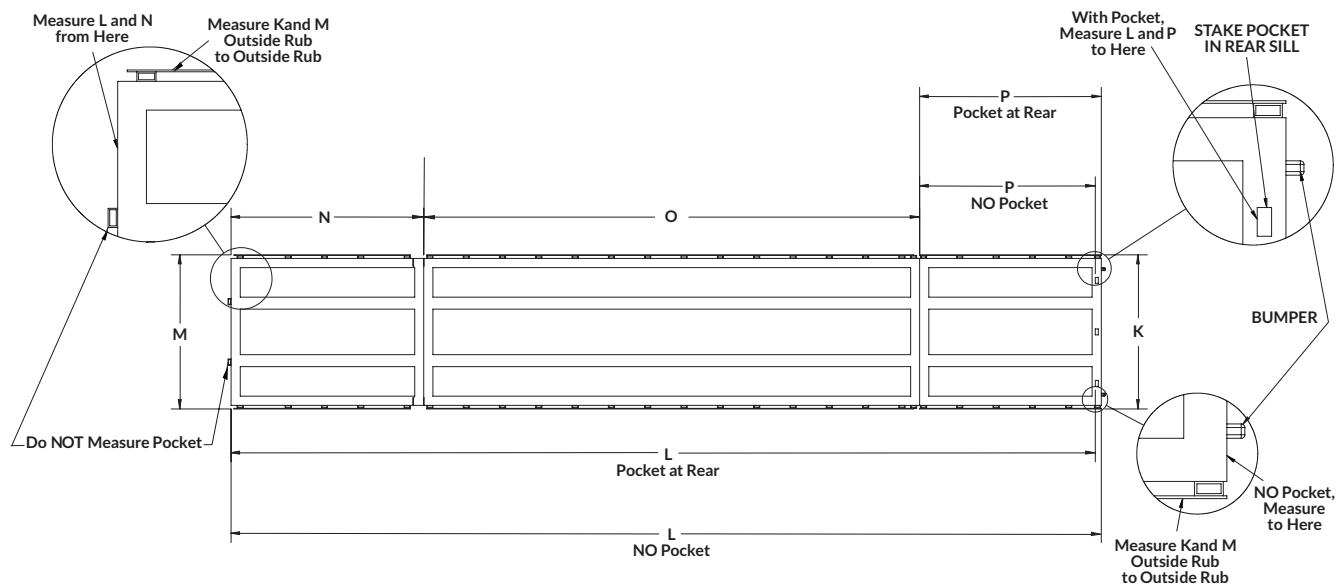
NAME _____
 ADDRESS _____
 EMAIL _____
 CITY _____ STATE _____ ZIP _____
 PHONE _____ FAX _____
 BOX/TRAILER MAKE _____
 MODEL _____ YEAR _____
 TRAILER VIN # (Last 5 Digits) _____
 DOT NUMBER _____



TRAILER DIMENSIONS

A _____ FIFTH WHEEL
 B _____ DROP HEIGHT
 C _____ TOP DECK REAR HEIGHT
 D _____ TOP DECK FRONT HEIGHT
 E _____ LOWER DECK FRONT HEIGHT
 F _____ LOWER DECK MID HEIGHT
 G _____ REAR DECK DROP
 H _____ LOWER DECK REAR HEIGHT
 I _____ REAR DECK FRONT HEIGHT
 J _____ REAR DECK REAR HEIGHT
 K _____ REAR DECK WIDTH
 L _____ TOTAL TRAILER LENGTH
 M _____ FRONT DECK WIDTH
 N _____ FRONT DECK LENGTH
 O _____ MID DECK LENGTH
 P _____ REAR DECK LENGTH

RUB RAIL ☐ STEEL ☐ ALUMINUM



I hereby certify that these measurements are accurate. I accept responsibility for any and all inaccurate measurements. I understand that I will be held financially responsible for any and all costs incurred with the production of my system based on these given measurements.

SIGNATURE _____ TITLE _____

DOUBLE DROP DECK TRAILER MEASUREMENT SHEET

TRACK: ☐ MAGNUM ☐ TITETRAX™

(• STANDARD PARTS)

EXTRA OPTIONS

- ☐ EXTRA LIFTERS
- ☐ QUAD LIFTERS
- ☐ REAR STEP
- PASSENGER SIDE ☐ STL OR ☐ AL
- DRIVER SIDE ☐ STL OR ☐ AL
- ☐ FRONT BUILD-OUT - 8"
- ☐ FOLDING TRACK EXTENSION
- ☐ TRACK GUARD (Magnum ONLY)
- ☐ STAINLESS STEEL LIGHT BAR

TRAILER ADDITIONS

- ☐ REUSING TRACK
- ☐ LOWERING ADDITIONAL LIGHTS
- EXCLUDES CORNER, MARKER & ABS
- ☐ REMOVING OLD TARP SYSTEM
- ☐ ADDITIONAL TRAILER WORK
- _____
- _____
- _____
- _____

SYSTEM HEIGHT

- ☐ MAXIMUM HEIGHT _____
- ☐ REQUIRED HEIGHT _____
- ☐ OTHER _____

ADDITIONAL NOTES

HEADBOARD ADDITIONS

- ☐ RE-USING HEADBOARD
- ☐ STAINLESS STEEL WRAP
- ☐ MAN DOOR
- ☐ CHAIN BOXES ☐ 1 OR ☐ 2
- ☐ DUNNAGE RACKS ☐ 1 OR ☐ 2
- ☐ UTILITY TRAY
- ☐ NOSE CONE ☐ WHITE OR ☐ BLACK
- ☐ INSIDE FLOOD LIGHTS
- ☐ ADDITIONAL HEADBOARD LIGHTS - 5 Total

TARP

- ☐ COLOR _____
- ☐ GRAPHICS

BACK FLAP OPENING OPTIONS (Choose One)

- ☐ ROPE & PULLEY
- ☐ CRANK ARM

BACK FLAP CLOSURE OPTIONS (Choose One)

- ☐ OVER 90° BARS
- ☐ VELCRO® WINGS

TENSIONING SYSTEM

- ☐ WINDING BRACE
- ☐ POST & RATCHET
- ☐ LOW PROFILE REAR LOCK

I hereby certify that these measurements are accurate. I accept responsibility for any and all inaccurate measurements. I understand that I will be held financially responsible for any and all costs incurred with the production of my system based on these given measurements.

SIGNATURE _____ TITLE _____

GEN3™ TRAILER MEASUREMENT SHEET

Shurco™ tarps are custom-made to order and are non-returnable, so the correct physical measurements are essential for proper tarp fit. Be sure to provide all requested information or your order may be delayed. Do NOT use universal body or trailer sizes. Instead, use ACTUAL MEASUREMENTS provided in INCHES.

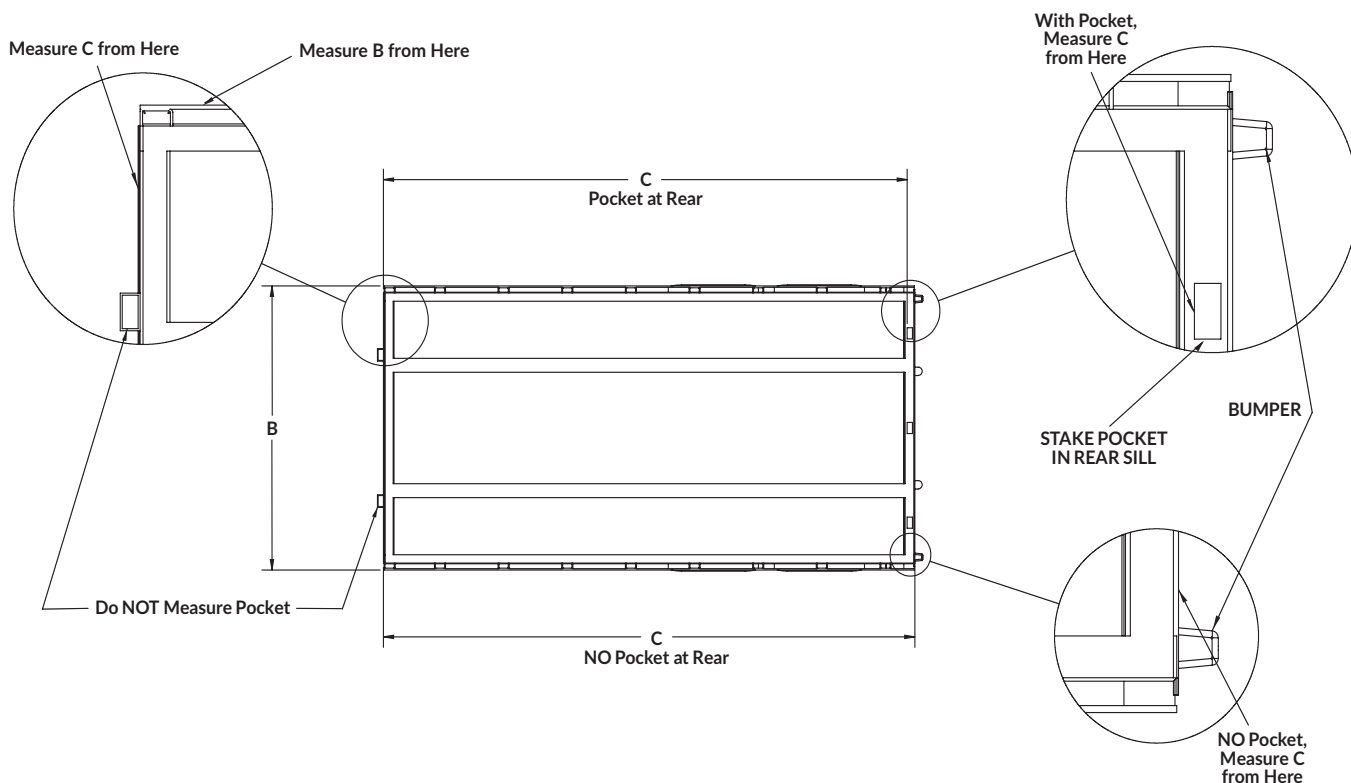
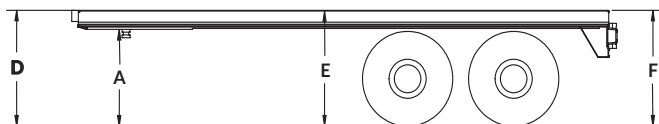
Use diagram below to help determine correct measurements for ordering. Trailer **MUST BE AIRED UP** and hooked to the truck or the fifth-wheel height set to 48" from the ground BEFORE taking measurements. Width of deck is from outside rub rail to outside rub rail. Additional information needed is noted on reverse side.

CONTACT INFORMATION

NAME _____
 ADDRESS _____
 EMAIL _____
 CITY _____ STATE _____ ZIP _____
 PHONE _____ FAX _____
 BOX/TRAILER MAKE _____
 MODEL _____ YEAR _____
 TRAILER VIN # (Last 5 Digits) _____
 DOT NUMBER _____

TRAILER DIMENSIONS

A _____ FIFTH WHEEL
 B _____ WIDTH
 C _____ DECK LENGTH
 D _____ FRONT HEIGHT
 E _____ MID DECK HEIGHT
 F _____ REAR HEIGHT
 RUB RAIL ☐ STEEL ☐ ALUMINUM



I hereby certify that these measurements are accurate. I accept responsibility for any and all inaccurate measurements. I understand that I will be held financially responsible for any and all costs incurred with the production of my system based on these given measurements.

SIGNATURE _____ TITLE _____

(• **STANDARD PARTS**)

EXTRA OPTIONS

- ☐ EXTRA LIFTERS
- ☐ QUAD LIFTERS
- ☐ REAR STEP
 - PASSENGER SIDE ☐ STL OR ☐ AL
 - DRIVER SIDE ☐ STL OR ☐ AL
- ☐ FRONT BUILD-OUT - 8"
- ☐ FOLDING TRACK EXTENSION
- ☐ STAINLESS STEEL LIGHT BAR

TRAILER ADDITIONS

- ☐ LOWERING ADDITIONAL LIGHTS
 - EXCLUDES CORNER, MARKER & ABS
- ☐ REMOVING OLD TARP SYSTEM
- ☐ ADDITIONAL TRAILER WORK

SYSTEM HEIGHT (Choose One)

- ☐ 104" STANDARD (102" Inside Height)
- ☐ 102" STANDARD (100" Inside Height)
- ☐ 100" STANDARD (98" Inside Height)
- ☐ 88" STANDARD (86" Inside Height)
- ☐ 84" STANDARD (82" Inside Height)
- ☐ 72" STANDARD (70" Inside Height)
- ☐ OTHER -----

HEADBOARD ADDITIONS

- ☐ STAINLESS STEEL WRAP
- ☐ MAN DOOR
- ☐ CHAIN BOXES ☐ 1 OR ☐ 2
- ☐ DUNNAGE RACKS ☐ 1 OR ☐ 2
- ☐ UTILITY TRAY
- ☐ NOSE CONE ☐ WHITE OR ☐ BLACK
- ☐ INSIDE FLOOD LIGHTS
- ☐ ADDITIONAL HEADBOARD LIGHTS - 5 Total

TARP

- ☐ COLOR -----
- ☐ GRAPHICS

BACK FLAP OPENING OPTIONS (Choose One)

- ☐ ROPE & PULLEY
- ☐ CRANK ARM

BACK FLAP CLOSURE OPTIONS (Choose One)

- ☐ OVER 90° BARS
- ☐ VELCRO® WINGS

ELECTRIC FRONT (Choose One)

- ☐ WIRED DIRECT
- ☐ BATTERY & SOLAR PANEL
- ☐ BATTERY & TRICKLE CHARGER

ADDITIONAL NOTES

I hereby certify that these measurements are accurate. I accept responsibility for any and all inaccurate measurements. I understand that I will be held financially responsible for any and all costs incurred with the production of my system based on these given measurements.

SIGNATURE _____ TITLE _____

GOOSENECK TRAILER MEASUREMENT SHEET

Shurco™ tarps are custom-made to order and are non-returnable, so the correct physical measurements are essential for proper tarp fit. Be sure to provide all requested information or your order may be delayed. Do NOT use universal body or trailer sizes. Instead, use ACTUAL MEASUREMENTS provided in INCHES.

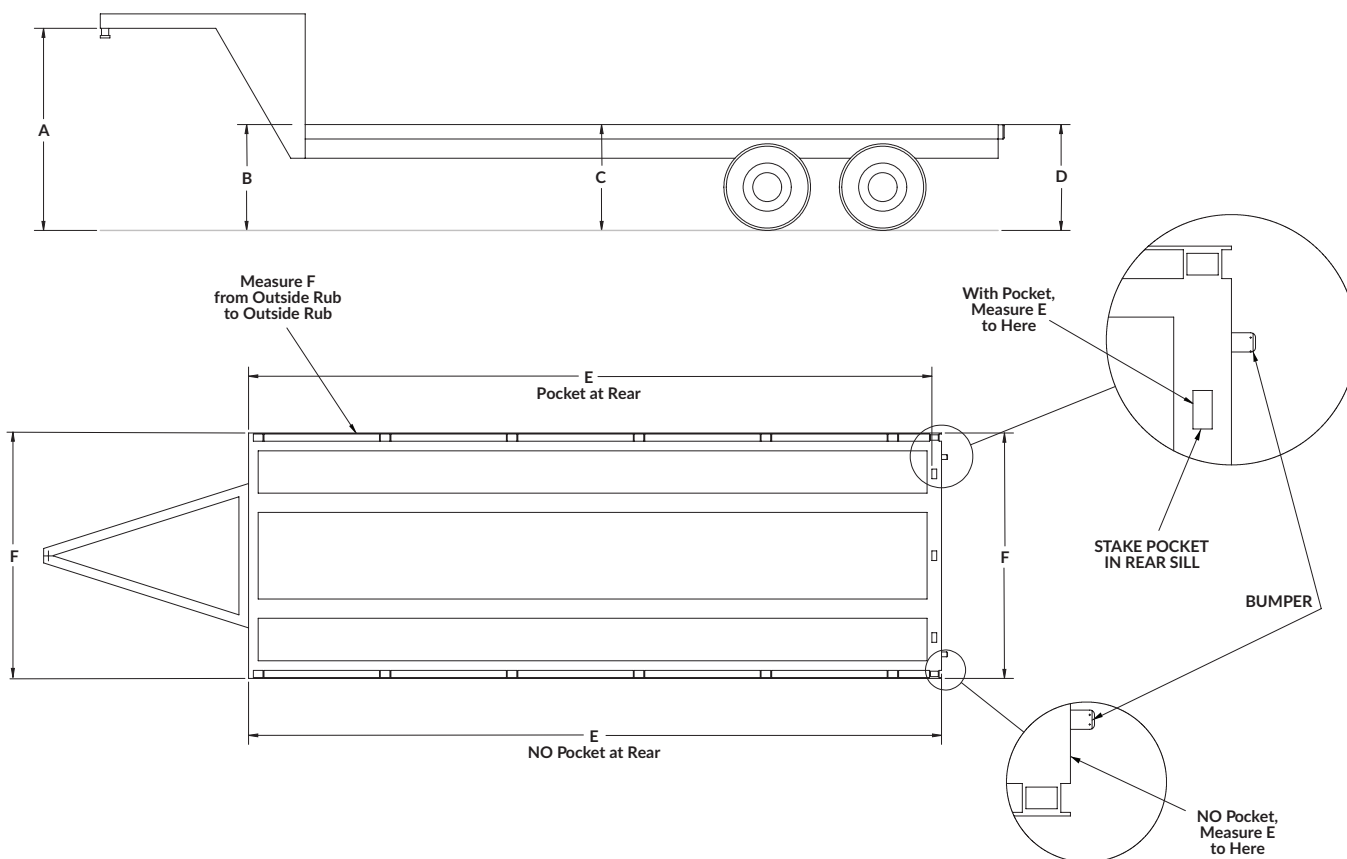
Use diagram below to help determine correct measurements for ordering. Trailer **MUST BE AIRED UP** and hooked to the truck or the fifth-wheel height set to 48" from the ground BEFORE taking measurements. Width of deck is from outside rub rail to outside rub rail. Additional information needed is noted on reverse side.

CONTACT INFORMATION

NAME _____
 ADDRESS _____
 EMAIL _____
 CITY _____ STATE _____ ZIP _____
 PHONE _____ FAX _____
 BOX/TRAILER MAKE _____
 MODEL _____ YEAR _____
 TRAILER VIN # (Last 5 Digits) _____
 DOT NUMBER _____

TRAILER DIMENSIONS

A _____ FIFTH WHEEL HEIGHT
 B _____ FRONT DECK HEIGHT
 C _____ MIC DECK HEIGHT
 D _____ REAR DECK HEIGHT
 E _____ DECK LENGTH
 F _____ DECK WIDTH
 RUB RAIL ☐ STEEL ☐ ALUMINUM



I hereby certify that these measurements are accurate. I accept responsibility for any and all inaccurate measurements. I understand that I will be held financially responsible for any and all costs incurred with the production of my system based on these given measurements.

SIGNATURE _____ TITLE _____

GOOSENECK TRAILER MEASUREMENT SHEET

TRACK:

☐ MAGNUM☐ TITETRAX™

(• STANDARD PARTS)

EXTRA OPTIONS

- ☐ EXTRA LIFTERS
- ☐ QUAD LIFTERS
- ☐ REAR STEP
- PASSENGER SIDE ☐ STL OR ☐ AL
- DRIVER SIDE ☐ STL OR ☐ AL
- ☐ FOLDING TRACK EXTENSION
- ☐ TRACK GUARD (Magnum ONLY)
- ☐ STAINLESS STEEL LIGHT BAR

TRAILER ADDITIONS

- ☐ REUSING TRACK
- ☐ LOWERING ADDITIONAL LIGHTS
- EXCLUDES CORNER, MARKER & ABS
- ☐ REMOVING OLD TARP SYSTEM
- ☐ ADDITIONAL TRAILER WORK
- _____
- _____

SYSTEM HEIGHT (Choose One)

- ☐ 104" STANDARD (102" Inside Height)
- ☐ 102" STANDARD (100" Inside Height)
- ☐ 100" STANDARD (98" Inside Height)
- ☐ 88" STANDARD (86" Inside Height)
- ☐ 84" STANDARD (82" Inside Height)
- ☐ 72" STANDARD (70" Inside Height)
- ☐ OTHER _____

HEADBOARD ADDITIONS

- ☐ RE-USING HEADBOARD
- ☐ STAINLESS STEEL WRAP
- ☐ MAN DOOR
- ☐ CHAIN BOXES ☐ 1 OR ☐ 2
- ☐ DUNNAGE RACKS ☐ 1 OR ☐ 2
- ☐ UTILITY TRAY
- ☐ NOSE CONE ☐ WHITE OR ☐ BLACK
- ☐ INSIDE FLOOD LIGHTS
- ☐ ADDITIONAL HEADBOARD LIGHTS - 5 Total

TARP

- ☐ COLOR _____
- ☐ GRAPHICS

BACK FLAP OPENING OPTIONS (Choose One)

- ☐ ROPE & PULLEY
- ☐ CRANK ARM

BACK FLAP CLOSURE OPTIONS (Choose One)

- ☐ OVER 90° BARS
- ☐ VELCRO® WINGS

TENSIONING SYSTEM

- ☐ WINDING BRACE
- ☐ POST & RATCHET
- ☐ LOW PROFILE REAR LOCK

ADDITIONAL NOTES

I hereby certify that these measurements are accurate. I accept responsibility for any and all inaccurate measurements. I understand that I will be held financially responsible for any and all costs incurred with the production of my system based on these given measurements.

SIGNATURE _____ TITLE _____

STRAIGHT TRUCK TRAILER MEASUREMENT SHEET

Shurco™ tarps are custom-made to order and are non-returnable, so the correct physical measurements are essential for proper tarp fit. Be sure to provide all requested information or your order may be delayed. Do NOT use universal body or trailer sizes. Instead, use ACTUAL MEASUREMENTS provided in INCHES.

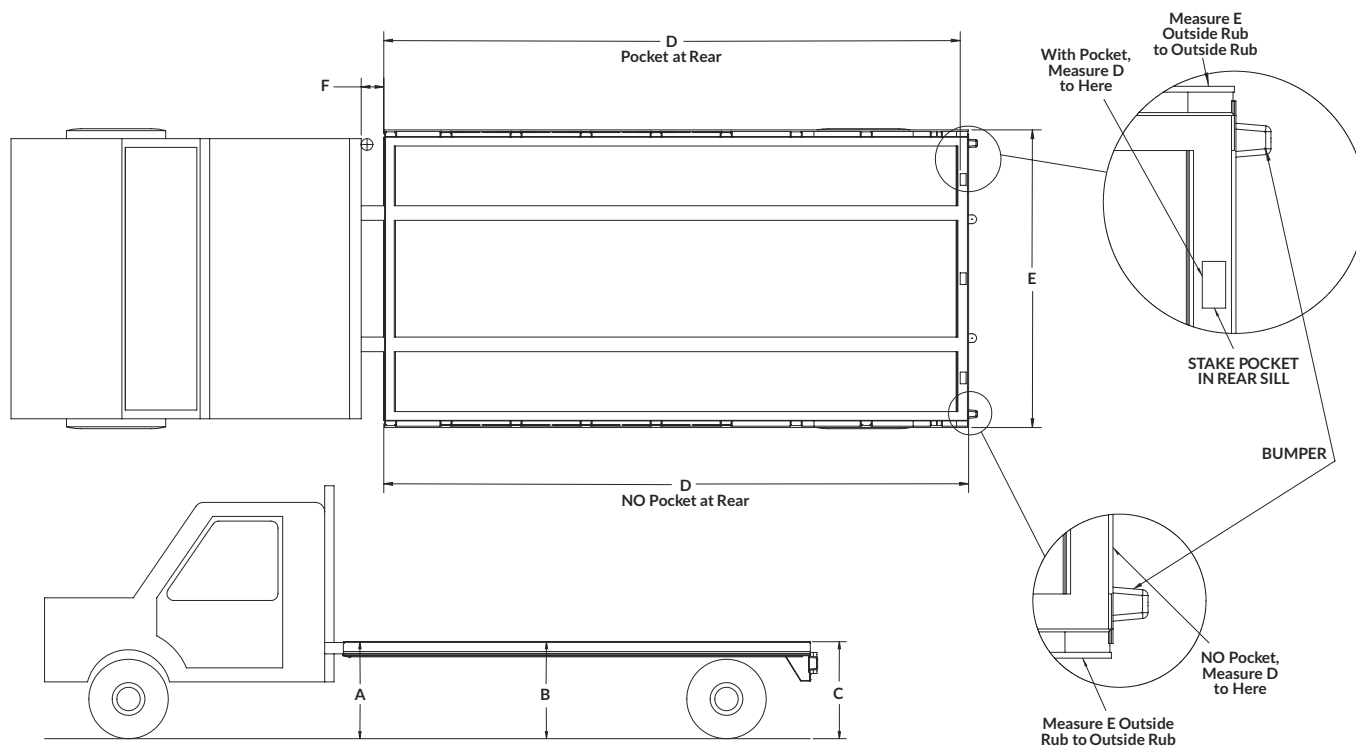
Use diagram below to help determine correct measurements for ordering. Trailer **MUST BE AIRED UP** and hooked to the truck or the fifth-wheel height set to 48" from the ground BEFORE taking measurements. Width of deck is from outside rub rail to outside rub rail. Additional information needed is noted on reverse side.

CONTACT INFORMATION

NAME _____
 ADDRESS _____
 EMAIL _____
 CITY _____ STATE _____ ZIP _____
 PHONE _____ FAX _____
 BOX/TRAILER MAKE _____
 MODEL _____ YEAR _____
 TRAILER VIN # (Last 5 Digits) _____
 DOT NUMBER _____

TRAILER DIMENSIONS

A _____ FRONT HEIGHT
 B _____ MID DECK HEIGHT
 C _____ REAR DECK HEIGHT
 D _____ DECK LENGTH
 E _____ DECK WIDTH
 F _____ CAB-TO-DECK LENGTH
 RUB RAIL ☐ STEEL ☐ ALUMINUM



I hereby certify that these measurements are accurate. I accept responsibility for any and all inaccurate measurements. I understand that I will be held financially responsible for any and all costs incurred with the production of my system based on these given measurements.

SIGNATURE _____ TITLE _____

STRAIGHT TRUCK TRAILER MEASUREMENT SHEET

TRACK:

☐ MAGNUM☐ TITETRAX™

(• STANDARD PARTS)

EXTRA OPTIONS

- ☐ EXTRA LIFTERS
- ☐ QUAD LIFTERS
- ☐ REAR STEP
- PASSENGER SIDE ☐ STL OR ☐ AL
- DRIVER SIDE ☐ STL OR ☐ AL
- ☐ FRONT BUILD-OUT - 8"
- ☐ FOLDING TRACK EXTENSION
- ☐ TRACK GUARD (Magnum ONLY)
- ☐ STAINLESS STEEL LIGHT BAR

TRAILER ADDITIONS

- ☐ REUSING TRACK
- ☐ LOWERING ADDITIONAL LIGHTS
- EXCLUDES CORNER, MARKER & ABS
- ☐ REMOVING OLD TARP SYSTEM
- ☐ ADDITIONAL TRAILER WORK
- _____
- _____
- _____

SYSTEM HEIGHT (Choose One)

- ☐ 104" STANDARD (102" Inside Height)
- ☐ 102" STANDARD (100" Inside Height)
- ☐ 100" STANDARD (98" Inside Height)
- ☐ 88" STANDARD (86" Inside Height)
- ☐ 84" STANDARD (82" Inside Height)
- ☐ 72" STANDARD (70" Inside Height)
- ☐ OTHER _____

ADDITIONAL NOTES

HEADBOARD ADDITIONS

- ☐ RE-USING HEADBOARD
- ☐ STAINLESS STEEL WRAP
- ☐ MAN DOOR
- ☐ CHAIN BOXES ☐ 1 OR ☐ 2
- ☐ DUNNAGE RACKS ☐ 1 OR ☐ 2
- ☐ UTILITY TRAY
- ☐ NOSE CONE ☐ WHITE OR ☐ BLACK
- ☐ INSIDE FLOOD LIGHTS
- ☐ ADDITIONAL HEADBOARD LIGHTS - 5 Total

TARP

- ☐ COLOR _____
- ☐ GRAPHICS

BACK FLAP OPENING OPTIONS (Choose One)

- ☐ ROPE & PULLEY
- ☐ CRANK ARM

BACK FLAP CLOSURE OPTIONS (Choose One)

- ☐ OVER 90° BARS
- ☐ VELCRO® WINGS

TENSIONING SYSTEM

- ☐ WINDING BRACE
- ☐ POST & RATCHET
- ☐ LOW PROFILE REAR LOCK

I hereby certify that these measurements are accurate. I accept responsibility for any and all inaccurate measurements. I understand that I will be held financially responsible for any and all costs incurred with the production of my system based on these given measurements.

SIGNATURE _____ TITLE _____



SHURCO.COM | 800-474-8756

Marks are owned by Shur-Co, LLC or their respective owners. © 2025 Shur-Co, LLC. All rights reserved.
SC014CAT_0126