



ENGINEERED TARPING SOLUTIONS

P/N 1105257 Rev. D

OWNER'S MANUAL



Cover-Up™ for Dump Bodies

READ BEFORE INSTALLING

PO BOX 713 ■ 2309 SHUR-LOK STREET ■ YANKTON, SD 57078-0713
PHONE 1-800-4-SHUR-LOK (1-800-474-8756) ■ FAX 605-665-0501
www.shurco.com

SHOP ONLINE: www.shopshurco.com

Shur-Co.[®] warrants that all new, unused products are free from defects in materials and workmanship. This warranty is effective if the product is properly installed and used for the purpose intended and applies to the original buyer only. Shur-Co.'s obligation under this warranty is limited to repairing or, at its option, replacing any part that is returned, transportation prepaid, to Shur-Co.[®], Yankton, SD. If the product is, in our judgement, in fact defective. All materials returned without written authorization will be refused. Shur-Co.[®] shall not be responsible to supply or pay labor to replace any part found defective, nor shall it be liable for any damages of any kind or nature to person, product or property.

There are no warranties for used products or products that have been repaired, altered, modified, subjected to misuse, negligence, accident or ordinary wear and tear.

Shur-Co.[®] products are sold without any express warranty except as set forth above.

No person is authorized to modify the foregoing warranty in any respect whatsoever.

Shur-Co.[®] is not obligated to honor warranty claims if approved O.E.M. or Genuine Shur-Co.[®] parts are not utilized.

SHUR-CO.[®] OF SOUTH DAKOTA

Corp. HQ and Outlet Store
 2309 Shur-Lok St., PO Box 713
 Yankton, SD 57078-0713
 Phone: 1-800-4-SHUR-LOK
 (1-800-474-8756)
 Fax: 1-605-665-0501

SERVICE CENTERS

Shur-Co.[®] of North Dakota
 920 38th St. NW, Exit 66
 Fargo, ND 58102
 Phone: 1-701-277-5714
 Fax: 1-701-877-1283

Shur-Co.[®] of Ohio
 1100 N. Freedom, PO Box 827
 Ravenna, OH 44266
 Phone: 1-330-297-0888
 Fax: 1-330-297-5599

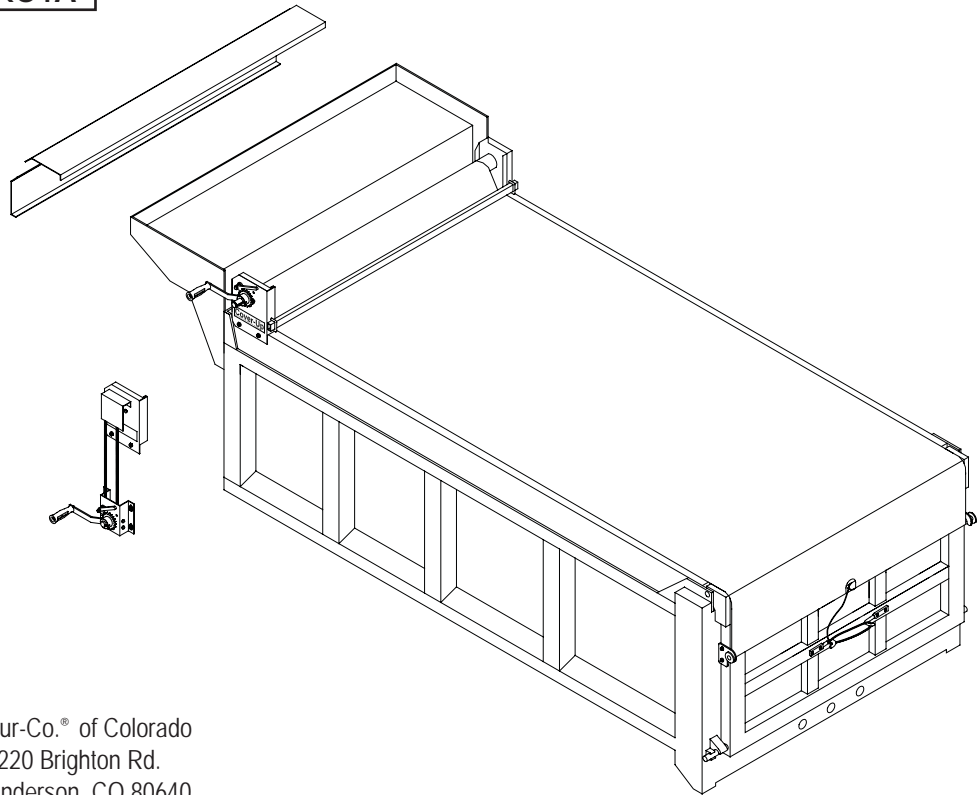
Shur-Co.[®] of Texas/Houston
 34505 I-10 West, S. Frontage Rd.
 Brookshire, TX 77423
 Phone: 1-281-934-1007
 Fax: 1-281-934-3311

Shur-Co.[®] of Colorado
 10220 Brighton Rd.
 Henderson, CO 80640
 Phone: 1-303-289-2050
 Fax: 1-303-289-2298

Shur-Co.[®] of Oklahoma
 1604 E. US Hwy 66
 El Reno, OK 73036
 Phone: 1-405-262-7600
 Fax: 1-405-262-3842

Shur-Co.[®] of Illinois
 4350 E. Boyd Rd.
 Decatur, IL 62521
 Phone: 1-217-877-8277
 Fax: 1-217-877-8270


Shur-Co.[®] of Iowa
 3839 Midway Blvd.
 Ft. Dodge, IA 50501
 Phone: 1-515-576-0959
 Fax: 1-515-576-5578



Cover-Up[™]

MESSAGE TO OWNERS

Thank you for buying this tarping system from Shur-Co.® We appreciate your confidence in our products. Please read and thoroughly understand this manual before installing and/or operating this system.

Pay particular attention to important safety and operating instructions, as well as warnings and cautions. The hazard symbol  is used to alert users to potentially hazardous conditions and is followed by caution, warning or danger messages.

Failure to READ AND FOLLOW INSTRUCTIONS could result in failure of your tarping system and/or personal injury. Your trailer requirements may, however, call for minor variations to these instructions.

Please inspect your tarping system periodically. Repair or replace worn or damaged parts to your system.

QUESTIONS? CALL OUR HELP LINE:

1-866-748-7435

MON-FRI 8 AM-5 PM CENTRAL TIME

SAFETY

We at Shur-Co.® are concerned with your safety and the safety of all those operating this system. Therefore, we have provided safety decals at various locations on your tarping system. Keep decals as clean as possible at all times. Replace any decal that has become worn or damaged, painted over or otherwise difficult to read. Replacement decals are available through Shur-Co.® dealers.

SAFETY INSTRUCTIONS

1. Always wear safety glasses during installation.
2. Keep body and clothing clear of moving parts.
3. Do not operate under potentially dangerous obstacles.
4. Use only OSHA approved ladders or scaffolding during installation process.



CAUTION

Inspect Cover-Up™ System periodically. Replace damaged or worn parts to prevent personal injury or system failure.

TABLE OF CONTENTS

Box Preparation..... 1

Hardware Identification..... 1

Roll Tube Assembly..... 2

Replacement Parts..... 3-4

Tarp & Optional Windshield Installation..... 5

System Securement & Operation..... 6

Crank Installation..... 7

Crank Relocator Installation 8-9

Operation & Notes 10

TOOLS REQUIRED

1. Steel Welder
2. Hammer
3. #3 Phillips Screw Driver Bit
4. 1/2" Wrench
5. 5/16" Drill Bit
6. 3/16" Drill Bit (for Phillips Sheet Metal Screws)
7. 1/4" Drill Bit
8. Retaining Ring Pliers
9. Punch
10. 1/8" Allen Key (for Bearings)
11. 5/32" Allen Key (for Crank Sprocket)
12. 3/16" Allen Key (for Sprocket)
13. Metal Saw
14. Air or Electric Impact Wrench
15. Drill

RUST PREVENTION

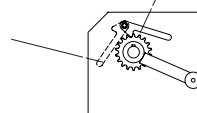
To prevent rust, paint all exposed metal, such as weld seams and/or metal exposed by grinding or cutting, with corrosion-resistant paint.



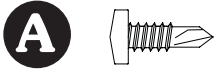
CAUTION

LOCKED POSITION - USE WHEN FULLY OPENED OR CLOSED

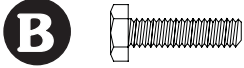
FREEWHEELING POSITION - USE TO CLOSE TARP



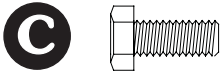
Grasp Crank Handle Firmly BEFORE Releasing Toggle. Rotate Slowly.



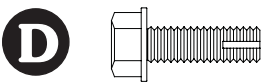
A 1700398 - Self-Drilling Screw - 1/4" x 3/4"



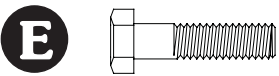
B 1700381 - Cap Screw - 1/4" x 1"



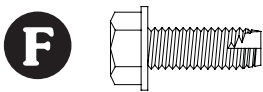
C 1701045 - Cap Screw - 5/16" x 3/4"



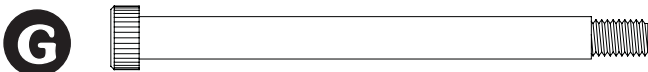
D 1701059 - Self-Tapping Screw - 5/16" x 1"



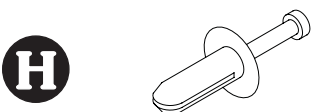
E 1701208 - Cap Screw - 5/16" x 1 1/4"



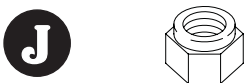
F 1700400 - Self-Tapping Screw - 3/8" x 1"



G 1701199 - Shoulder Bolt - 3/8" x 4"



H 1700474 - Nylon Truck Rivet - 1/4" x 3/4"



J 1700419 - Nylon Lock Nut - 5/16"



K 1700411 - Hex Nut - 5/16"



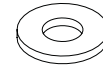
L 1701543 - Nylon Lock Nut - 1/4"



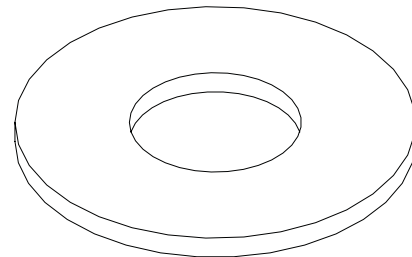
M 1700433 - Lock Washer - 5/16"



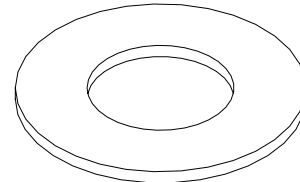
N 1700427 - Flat Washer - 1/4"



P 1701209 - Flat Washer - 1 1/8"



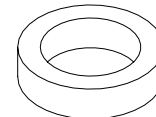
Q 1702733 - Flat Washer - 2"



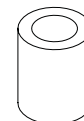
R 1701060 - External Retaining Ring - 1"



S 1701197 - Toggle Spacer

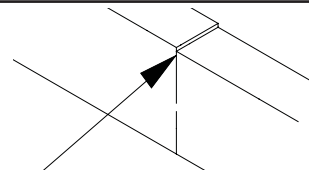


T 1701196 - Sleeve Bearing

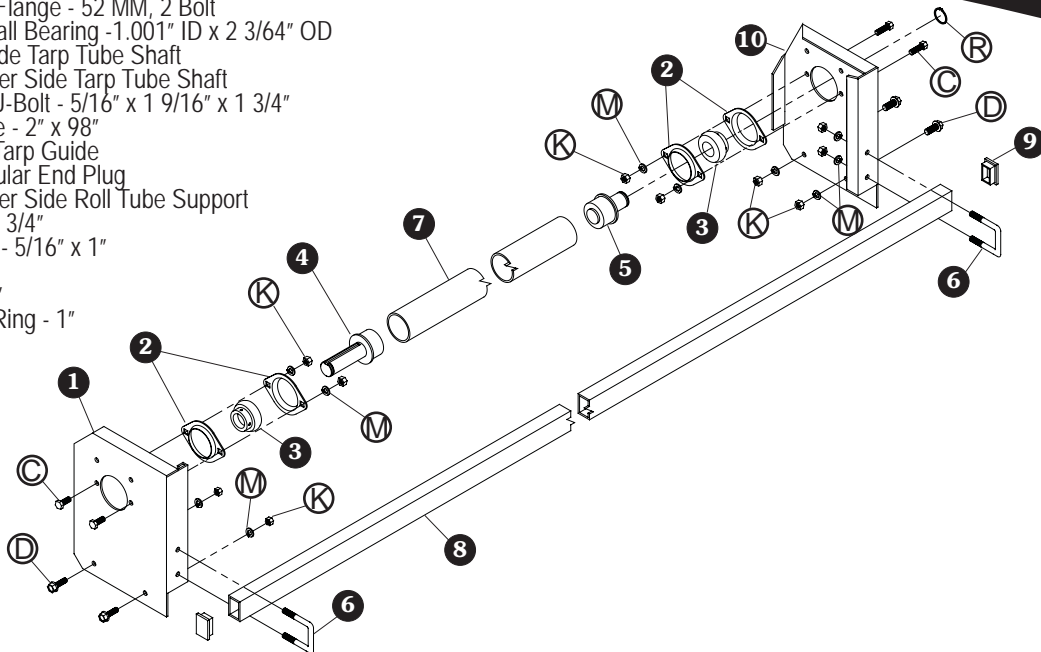


BOX PREPARATION

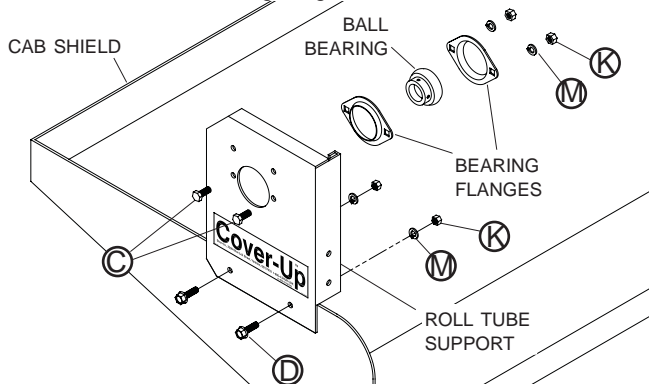
Prepare truck box before installing the Cover-Up™ System. Remove or grind away sharp edges or points of interference that could damage tarp. For best seal, add side planks (if required) to obtain a level top rail.



Item	Part #	Description
1.	1105237	Driver Side Roll Tube Support
2.	1701054	Bearing Flange - 52 MM, 2 Bolt
3.	1702594	Radial Ball Bearing -1.001" ID x 2 3/64" OD
4.	1106187	Driver Side Tarp Tube Shaft
5.	1106189	Passenger Side Tarp Tube Shaft
6.	1701200	Square U-Bolt - 5/16" x 1 9/16" x 1 3/4"
7.	1106176	Roll Tube - 2" x 98"
8.	1105238	Tubular Tarp Guide
9.	1701207	Rectangular End Plug
10.	1105236	Passenger Side Roll Tube Support
C.		Cap Screw - 5/16" x 3/4"
D.		Self-Tapping Screw - 5/16" x 1"
K.		Hex Nut - 5/16"
M.		Lock Washer - 5/16"
R.		External Retaining Ring - 1"



STEP 1: Roll Tube Supports: Assemble ball bearing into bearing flanges. Fasten flange assemblies on inside of roll tube supports with screws **C**, washers **M** and nuts **K**. Finger tighten.

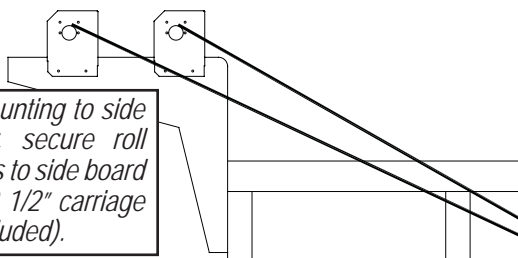


STEP 2: Locate and drill 1/4" holes and mount roll tube supports to front end of box with screws **D**, washers **M**, and nuts **K**.

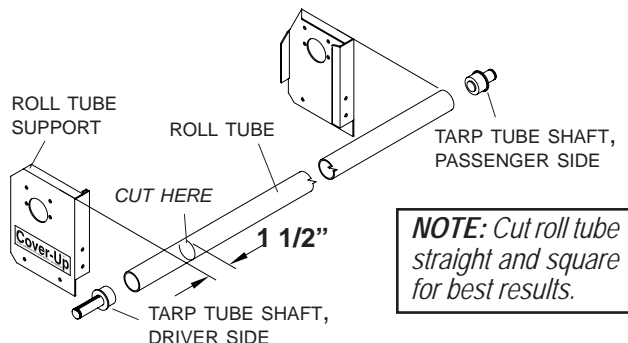
NOTE: Bracket location must allow tarp to operate freely. If bracket is mounted too low, cab shield interferes with tarp roll.

BOLT To steel framework on box or SEE NOTE.

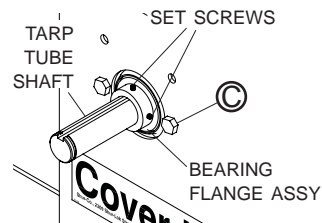
NOTE: If mounting to side boards only, secure roll tube brackets to side board with 3/8" x 2 1/2" carriage bolt (not included).



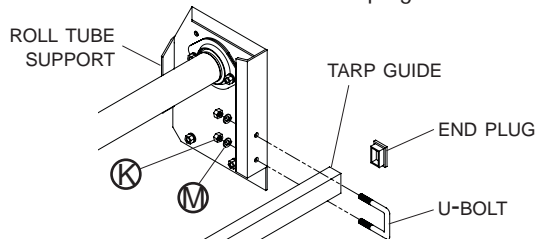
STEP 3: Cut roll tube 1 1/2" shorter than distance between outside edges of roll tube supports. Seam weld tarp tube shafts into ends of roll tube.

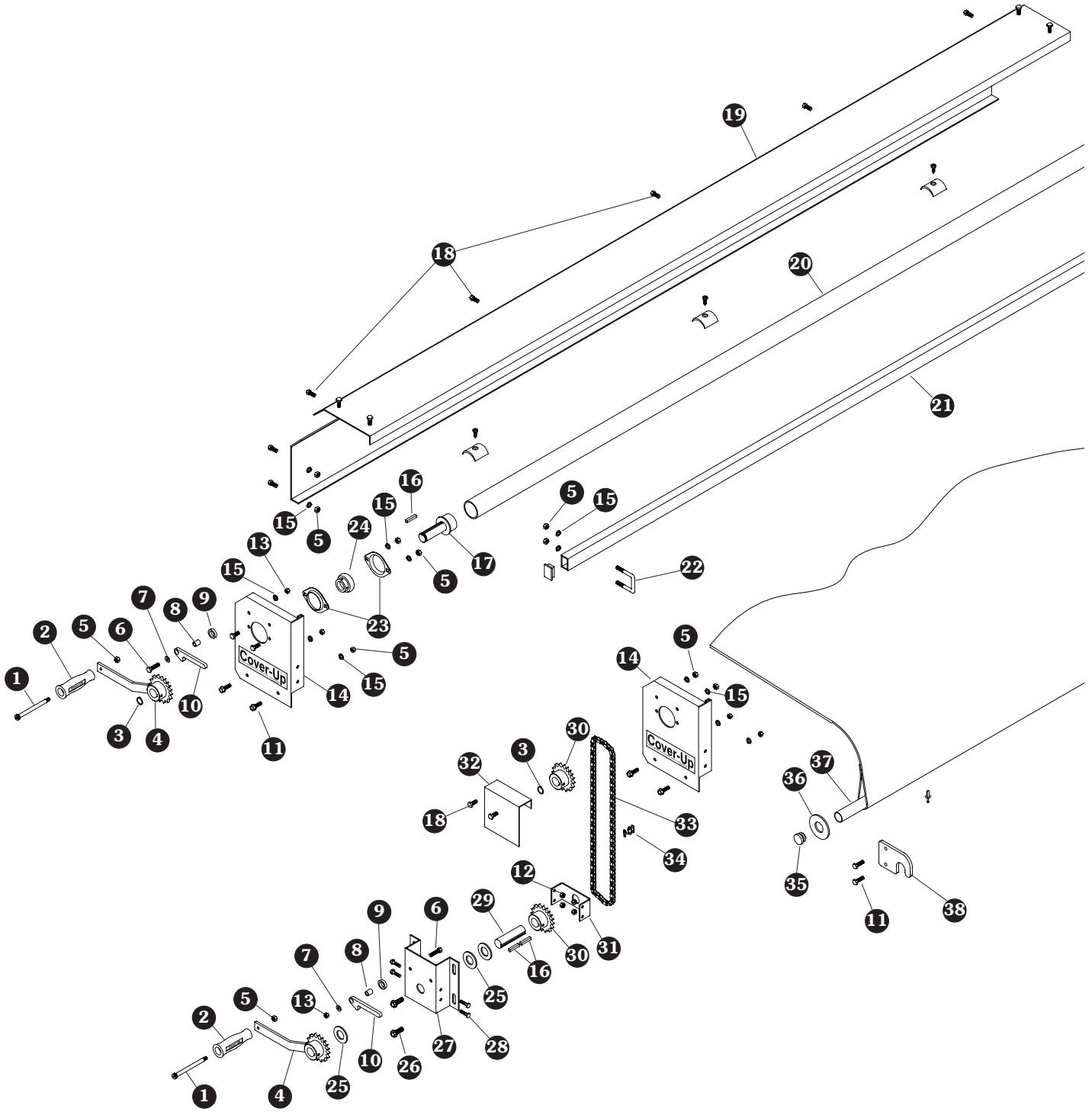


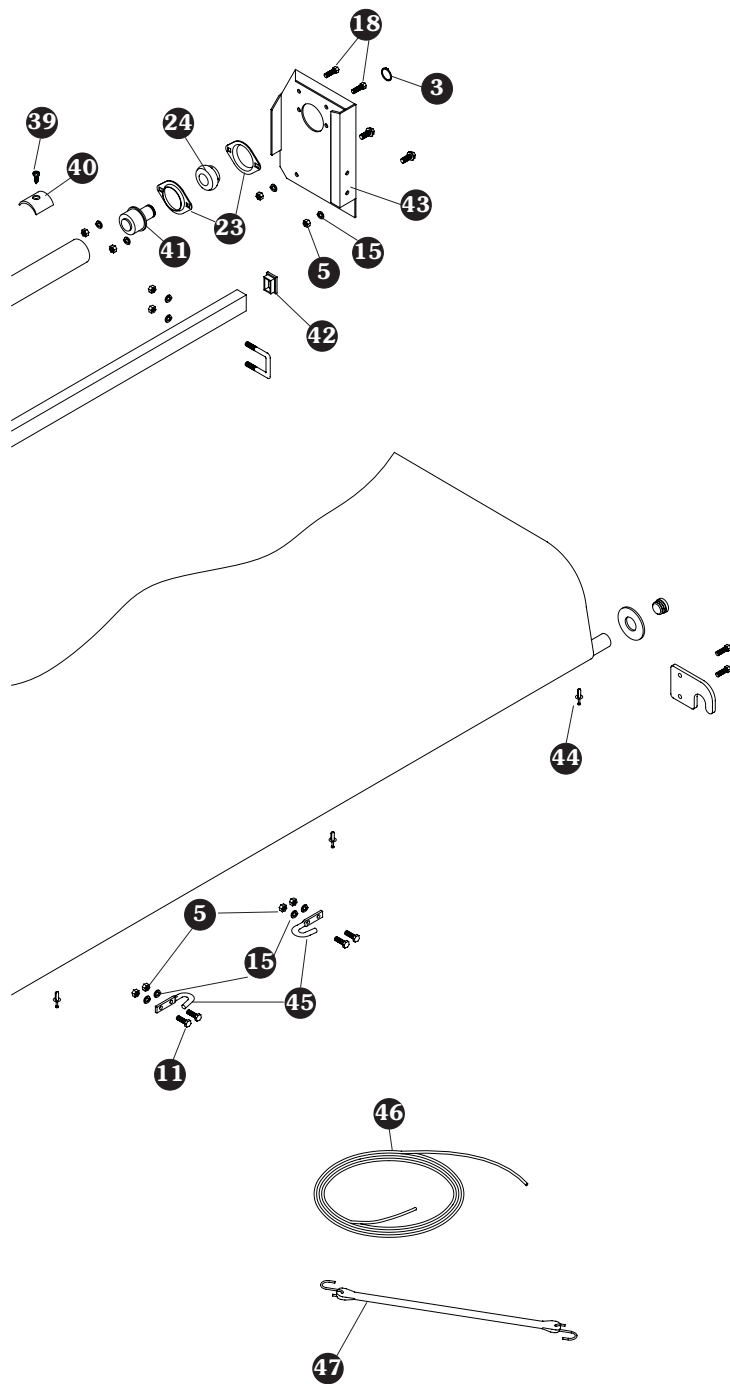
STEP 4: Insert tarp tube shaft into bearing flange assembly and tighten ball bearing set screws. Tighten the bearing flange screws **C**.



STEP 5: Tarp Guide: Cut tarp guide to fit flush with outside edges of roll tube supports. Secure with u-bolts, nuts **K** and washers **M**. Install end plugs.

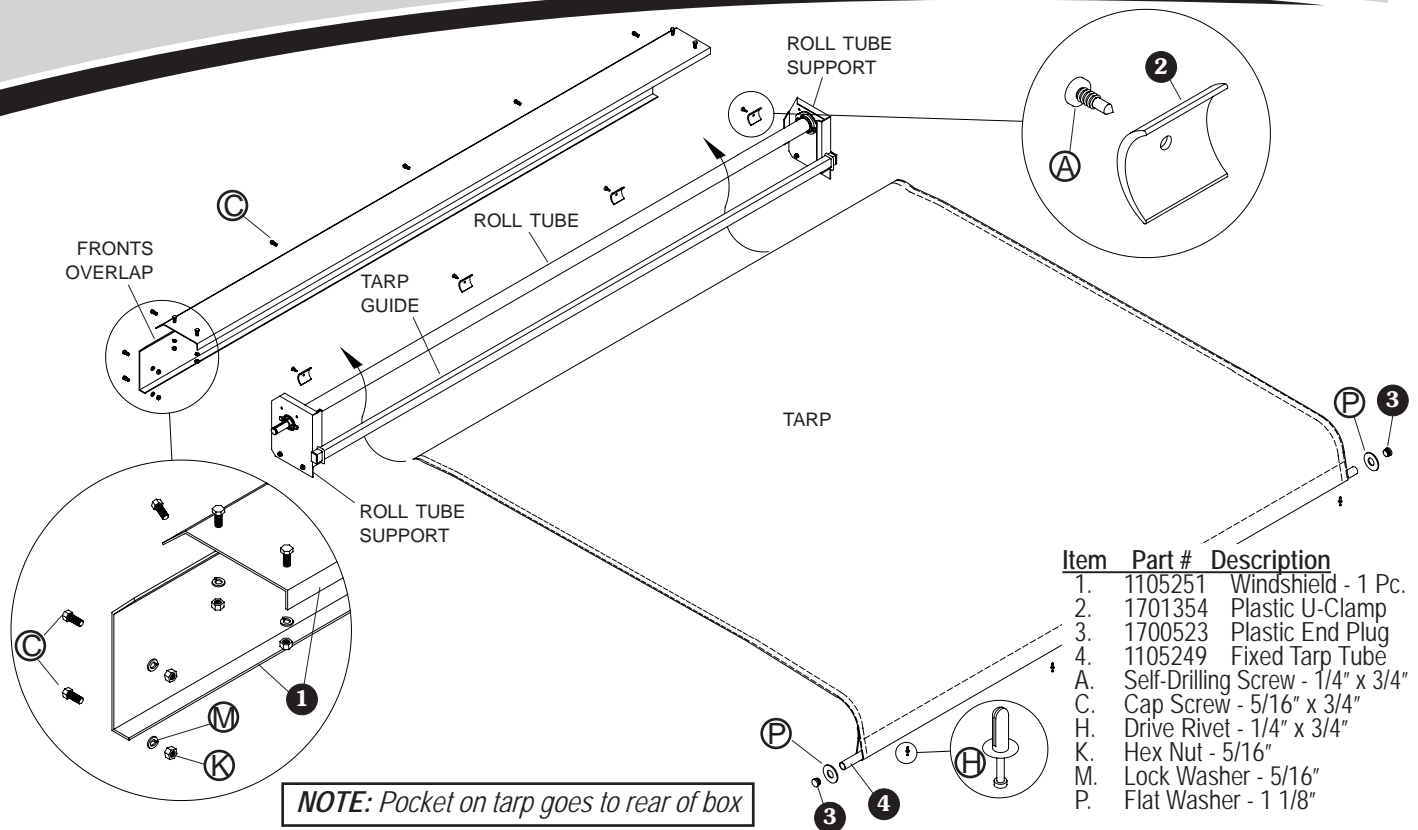






Item	Part #	Description
1.	1701199	Shoulder Bolt - 3/8" x 4"
2.	1701353	Plastic Handle
3.	1701060	External Retaining Ring - 1"
4.	1105239	Crank Weldment
5.	1700411	Hex Nut - 5/16"
6.	1701208	Cap Screw - 5/16" x 1 1/4"
7.	1700427	Flat Washer - 1/4"
8.	1701196	Sleeve Bearing
9.	1701197	Toggle Spacer
10.	1701194	Toggle
11.	1701059	Self-Tapping Screw - 5/16" x 1"
* 12.	1701543	Nylon Lock Nut - 1/4"
13.	1700419	Nylon Lock Nut - 5/16"
14.	1105237	Driver Side Roll Tube Support
15.	1700433	Lock Washer - 5/16"
* 16.	1701056	Square Key - 1/4" x 1 3/8"
17.	1106187	Driver Side Tarp Tube Shaft
18.	1701045	Cap Screw - 5/16" x 3/4"
* 19.	1105251	Windshield - 1 Pc.
20.	1106176	Roll Tube - 2" x 98"
21.	1105238	Tubular Tarp Guide
22.	1701200	Square U-Bolt - 5/16" x 1 9/16" x 1 3/4"
23.	1701054	Bearing Flange - 52 MM, 2 Bolt
24.	1702594	Radial Ball Bearing -1.001" x 2 3/64" OD
* 25.	1702733	Flat Washer - 2"
* 26.	1700400	Self-Tapping Screw - 3/8" x 1"
* 27.	1111749	Crank Relocator Bracket
* 28.	1700381	Cap Screw - 1/4" x 1"
* 29.	1701220	Crank Relocator Shaft - 1" x 3 5/8"
* 30.	1106619	Sprocket, 18 Tooth
* 31.	1111670	Relocator Brace
* 32.	1106708	Upper Chain Guard
* 33.	1109179	Roller Chain/Link - 14'
* 34.	1701057	Chain Connector Link
35.	1700523	Plastic End Plug
36.	1701209	Flat Washer - 1 1/8"
37.	1105249	Fixed Tarp Tube - 1 1/8" x 102"
38.	1701201	Gate Hook
39.	1700398	Self-Drilling Screw - 1/4" x 3/4"
40.	1701354	Plastic U-Clamp
41.	1106189	Passenger Side Tarp Tube Shaft
42.	1701207	Rectangular End Plug
43.	1105236	Passenger Side Roll Tube Support
44.	1700474	Drive Rivet - 1/4" x 3/4"
45.	1700682	Box Hook w/5/16" Holes
46.	1100469	Rope - 32'
47.	1700649	Rubber Strap - 15"

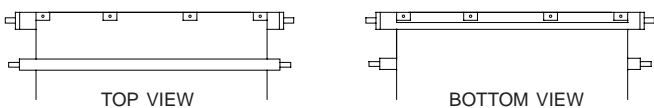
* Windshield and crank relocator parts are available for your Cover-Up™ system and are sold separately.



Item	Part #	Description
1.	1105251	Windshield - 1 Pc.
2.	1701354	Plastic U-Clamp
3.	1700523	Plastic End Plug
4.	1105249	Fixed Tarp Tube
A.		Self-Drilling Screw - 1/4" x 3/4"
C.		Cap Screw - 5/16" x 3/4"
H.		Drive Rivet - 1/4" x 3/4"
K.		Hex Nut - 5/16"
M.		Lock Washer - 5/16"
P.		Flat Washer - 1 1/8"

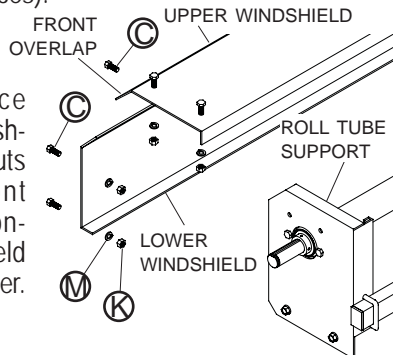
Measure and compare current tarp width to width of tarp ordered. If widths do not match, STOP installation process and call Shur-Co.® for further instructions.

STEP 1: Tarp Installation: Center and square tarp on roll tube. Fasten tarp to roll tube with four U-Clamps and screws **A**. Start at center and work toward edges, pulling tarp tight. Feed tarp under tarp guide.



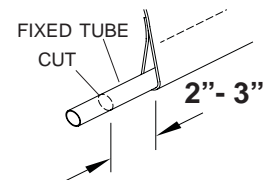
STEP 2: Windshield Installation: Cut windshield to fit flush with outside edges of roll tube supports, clamp in place.

STEP 3: Drill 1/4" holes and fasten lower, then upper windshield to roll tube supports with screws **C**, washers **M** and nuts **K** (10 places).

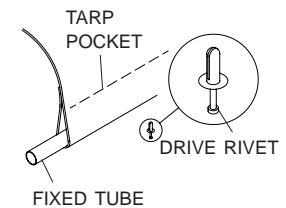


STEP 4: Equally space screws **C**, washers **M**, and nuts **K** along front overlap to connect windshield sections together.

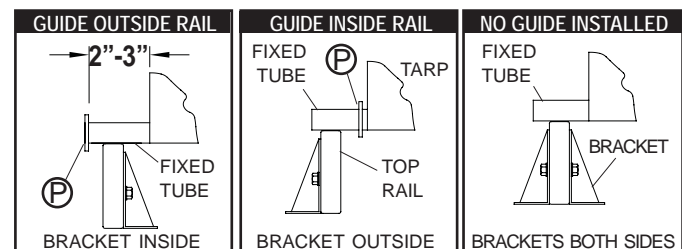
STEP 5: Fixed Tube: Guide fixed tube into pocket on tarp. Cut tube to extend 2" - 3" on each side of tarp. Remove all sharp edges.



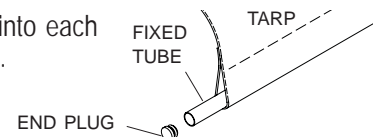
STEP 6: Center fixed tube in pocket. Drill four 1/4" holes, evenly spaced, through tarp into fixed tube. Secure tarp to fixed tube with drive rivets.

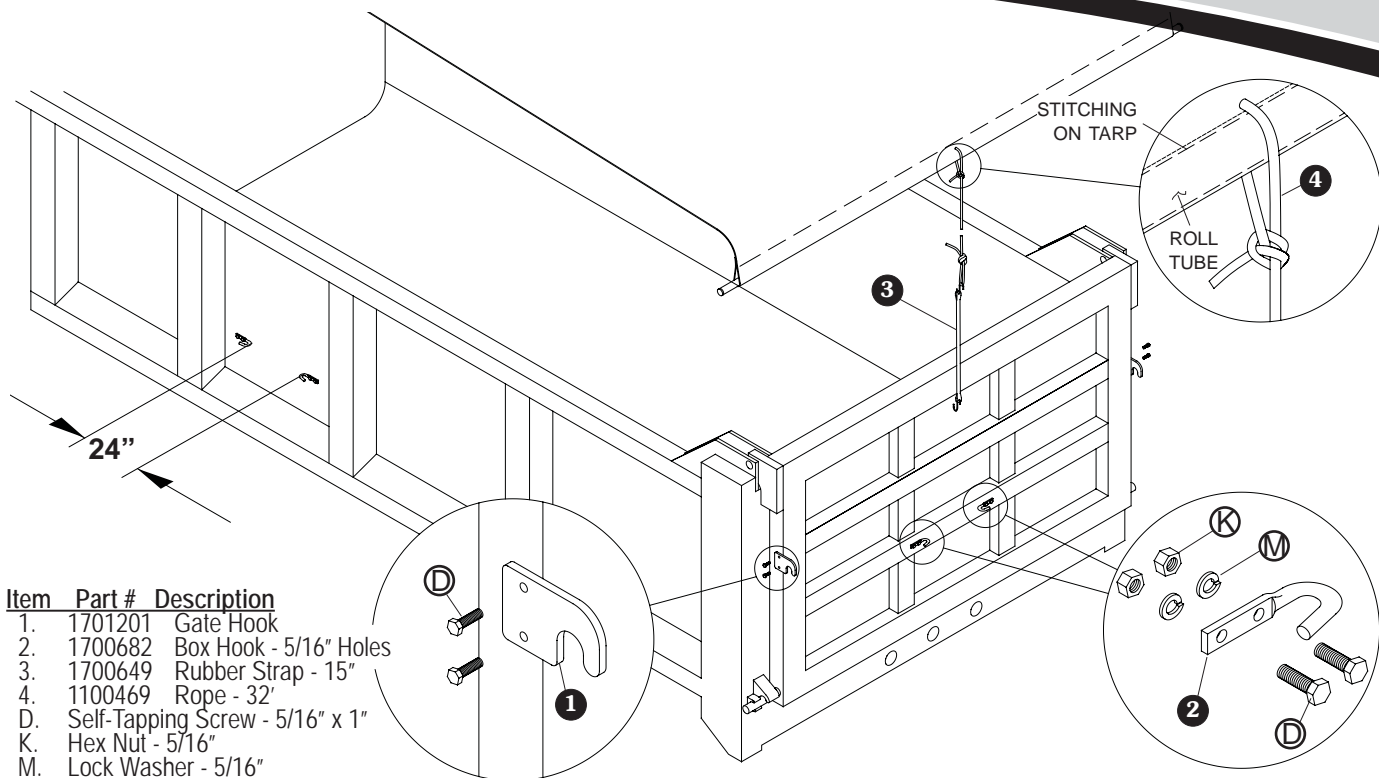


STEP 7: Rear Tarp Guide (optional): Weld flat washer **P** onto each end of fixed tube. Depending on rail configuration, guide can ride inside or outside top rail.



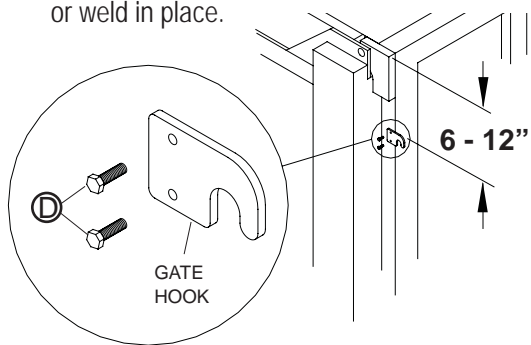
STEP 8: Install end plug into each end of fixed tube.



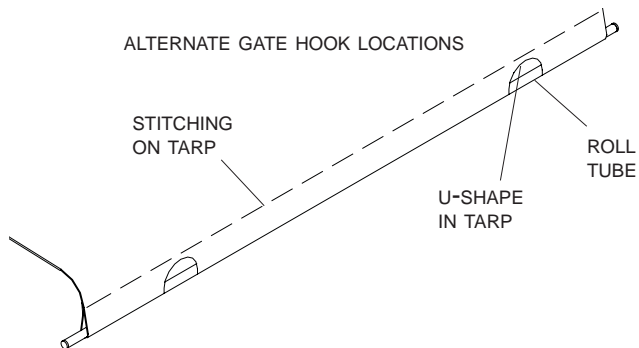


Item	Part #	Description
1.	1701201	Gate Hook
2.	1700682	Box Hook - 5/16" Holes
3.	1700649	Rubber Strap - 15"
4.	1100469	Rope - 3/2"
D.		Self-Tapping Screw - 5/16" x 1"
K.		Hex Nut - 5/16"
M.		Lock Washer - 5/16"

STEP 1: Rear Gate Hooks: Position gate hooks 6" to 12" from top of tailgate on outside edges of tarp. Mark hole locations. Drill 1/4" holes and secure with screws **D** or weld in place.



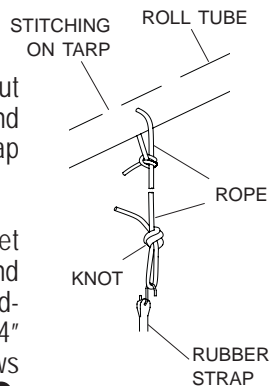
NOTE: If gate hooks cannot be installed outside the tarp's path, cut 'U' shapes in the tarp to fit gate hooks. **DO NOT** cut stitching on tarp.



STEP 2: Rope Return: Cut a small hole in center of tarp just above roll tube. Wrap rope around roll tube, tie knot.

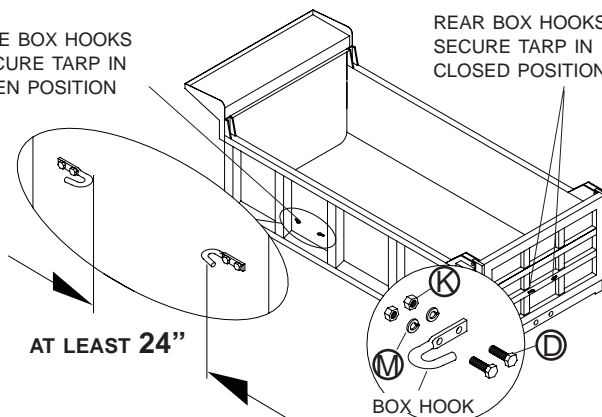
STEP 3: Cut rope so end is about 24" above ground. Knot end of rope, hook rubber strap through knot.

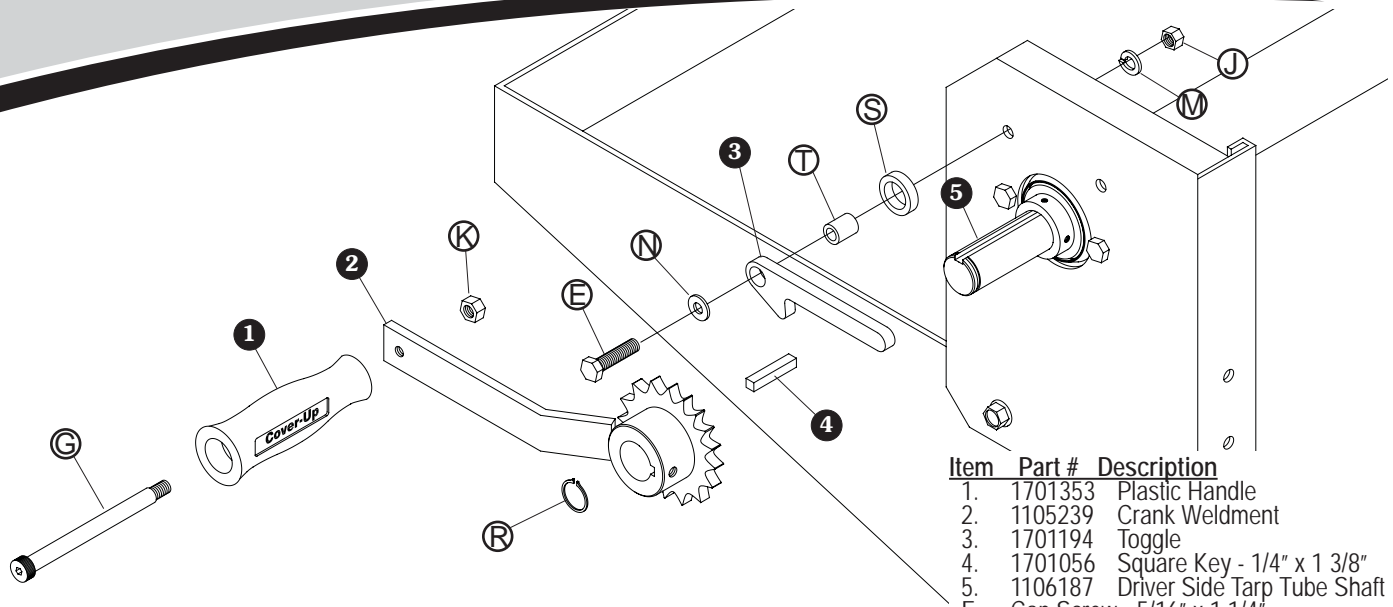
STEP 4: Box Hooks: Position set of box hooks on rear, and side of trailer. Recommended spacing is at least 24" apart. Secure with screws **D**, washers **M**, and nuts **K**.



SIDE BOX HOOKS
SECURE TARP IN
OPEN POSITION

REAR BOX HOOKS
SECURE TARP IN
CLOSED POSITION

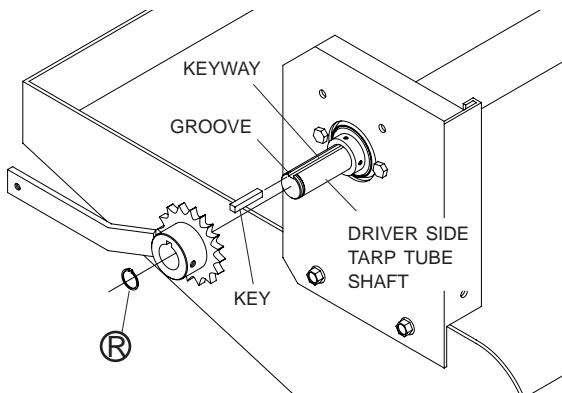




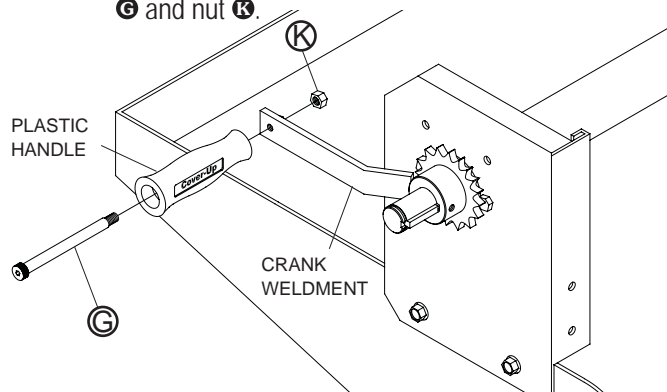
Item	Part #	Description
1.	1701353	Plastic Handle
2.	1105239	Crank Weldment
3.	1701194	Toggle
4.	1701056	Square Key - 1/4" x 1 3/8"
5.	1106187	Driver Side Tarp Tube Shaft
E.		Cap Screw - 5/16" x 1 1/4"
G.		Shoulder Bolt - 3/8" x 1"
J.		Nylon Lock Nut - 5/16"
K.		Hex Nut - 5/16"
M.		Lock Washer - 5/16"
N.		Flat Washer - 1/4"
R.		External Retaining Ring - 1"
S.		Toggle Spacer
T.		Sleeve Bearing

NOTE: For crank relocater installation instructions, go to next page.

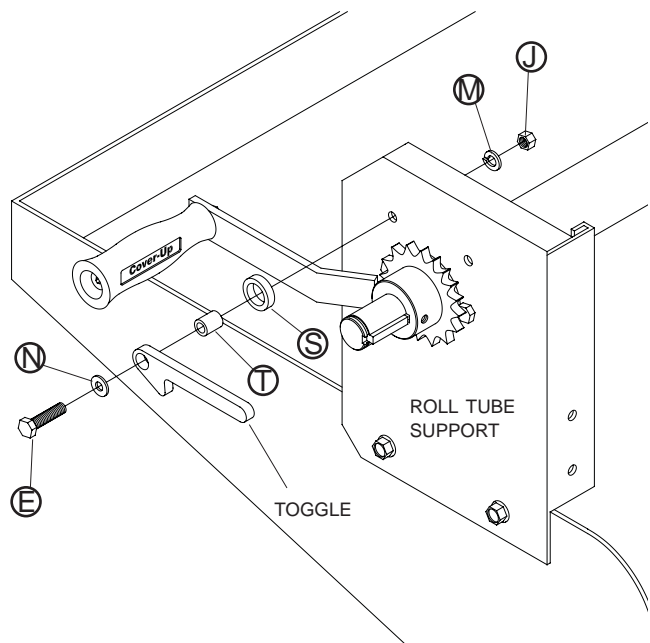
STEP 1: Insert key into keyway on driver side tarp tube shaft. Slide crank weldment on shaft and clip snap ring **R** into groove.



STEP 2: Secure plastic handle to crank weldment with screw **G** and nut **K**.

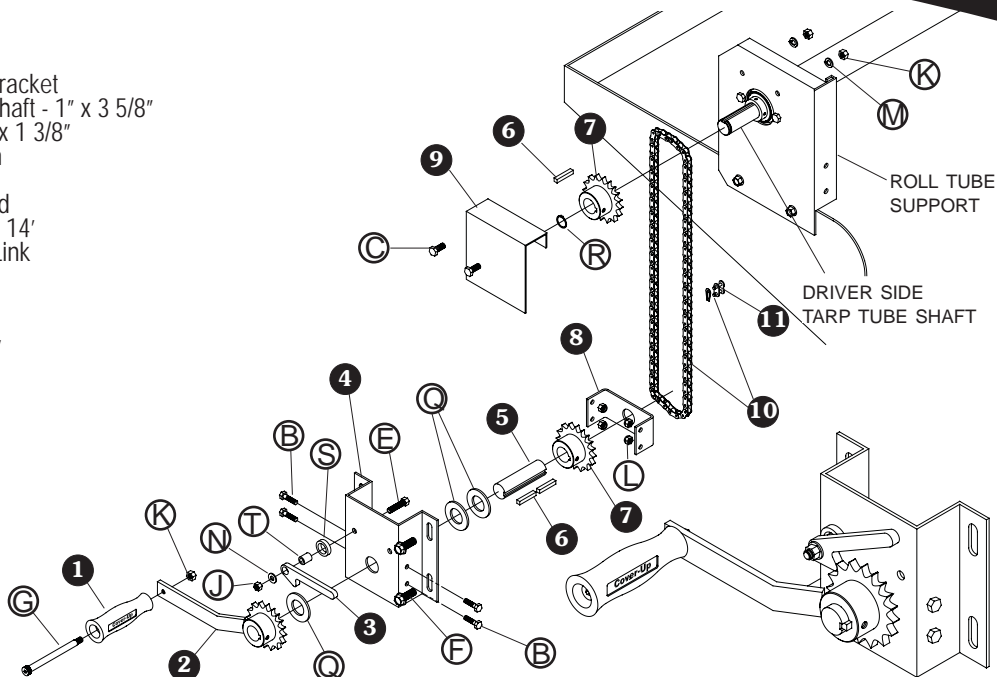


STEP 3: Assemble washer **N**, toggle, sleeve bearing **T** and toggle spacer **S** to roll tube support. Secure with screw **E**, washer **M** and nut **J**. Do not overtighten sleeve bearing and toggle spacer.



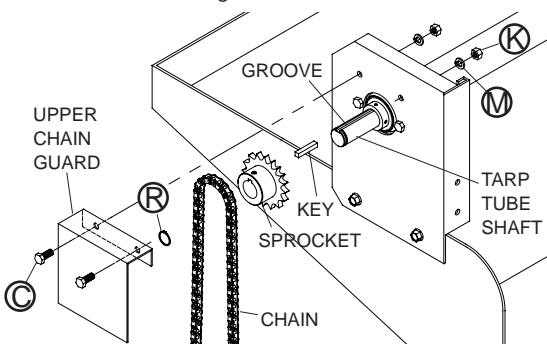
NOTE: Do Not overtighten sleeve bearings.

Item	Part #	Description
1.	1701353	Plastic Handle
2.	1105239	Crank Weldment
3.	1701194	Toggle
4.	1111749	Crank Relocator Bracket
5.	1701220	Crank Relocator Shaft - 1" x 3 5/8"
6.	1701056	Square Key - 1/4" x 1 3/8"
7.	1106619	Sprocket, 18 Tooth
8.	1111670	Relocator Brace
9.	1106708	Upper Chain Guard
10.	1109179	Roller Chain/Link - 14'
11.	1701057	Chain Connector Link
B.		Cap Screw - 1/4" x 1"
C.		Cap Screw - 5/16" x 3/4"
E.		Cap Screw - 5/16" x 1 1/4"
F.		Self-Tapping Screw - 3/8" x 4"
G.		Shoulder Bolt - 3/8" x 1"
J.		Nylon Lock Nut - 5/16"
K.		Hex Nut - 5/16"
L.		Nylon Lock Nut - 1/4"
M.		Lock Washer - 5/16"
N.		Flat Washer - 1/4"
O.		Flat Washer - 2"
R.		External Retaining Ring - 1"
S.		Toggle Spacer
T.		Sleeve Bearing



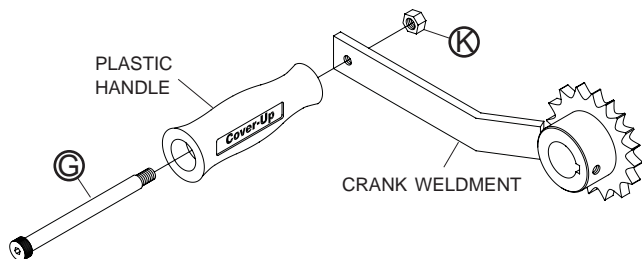
Assembled Crank

STEP 1: Insert 1/4" key into keyway on driver side tarp tube shaft. Slide sprocket onto shaft. Fasten snap ring **R** into stub shaft groove.

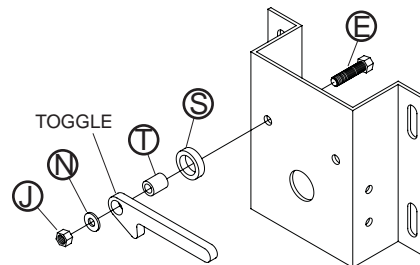


STEP 2: Lay chain over sprocket. Secure upper chain guard to driver side roll tube support with screws **C**, washers **M** and nuts **K**.

STEP 3: Secure plastic handle to crank weldment with screw **G** and nut **K**.

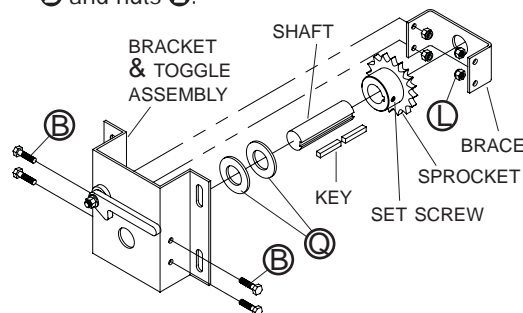


STEP 4: Assemble toggle spacer and bearing to the crank relocator bracket. Secure with screw **E**, washer **N** and nut **J**.



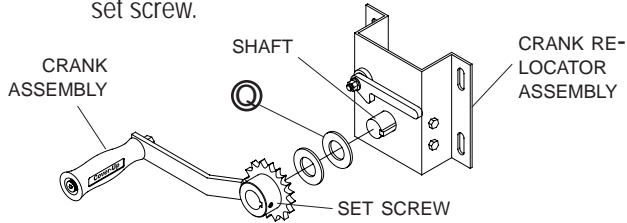
NOTE: Do not overtighten bearings.

STEP 5: Insert 1/4" key into keyway on shaft. Slide sprocket and washers **Q** (2) onto shaft and place into brace. Secure bracket/toggle assembly to brace with screws **B** and nuts **L**.

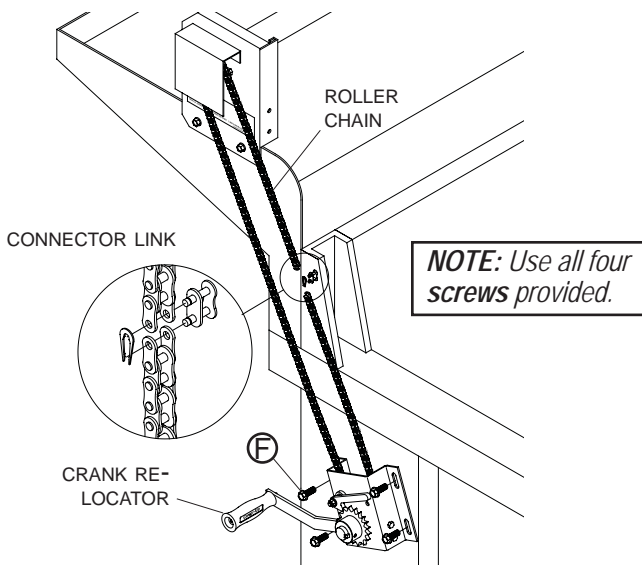


NOTE: Tighten set screw on sprocket after chain installation and final adjustments.

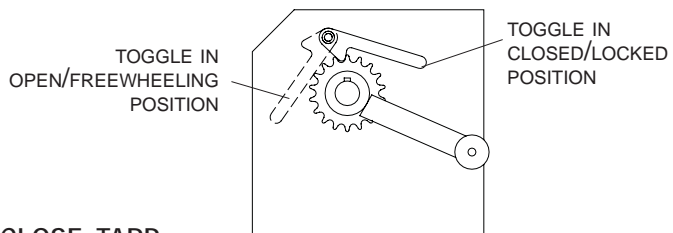
STEP 6: Secure washer **Q** and crank assembly to shaft with set screw.



STEP 7: Locate crank relocator assembly on box, keeping sprockets in line and away from obstacles. Mark hole locations. Drill 5/16" holes and fasten to box with screws **F**. Finger tighten.



STEP 8: Install roller chain and connector link. Adjust chain tension so that each side of chain can be deflected about 1". Tighten all sprocket set screws (3) and screws **F** after all final adjustments have been made.



CLOSE TARP:

- Release toggle, remove rope from box hooks on side of box.
- Pull rope and tarp straight back until fixed tube is below gate hooks.
- Back-roll crank to set tarp tension, lock with toggle.
- Wind rope around rear box hooks.
- To remove slack from rope, stretch tarp strap and secure.

OPEN TARP:

- Unwind rope from rear box hooks.
- Release fixed tube from gate hooks.
- Crank tarp forward until tight and set toggle.
- Wind rope around box hooks on side of trailer.
- To remove slack from rope, stretch tarp strap and secure.

CAUTION

Grasp crank handle firmly before releasing toggle. Rotate slowly.

Notes

1. Solid vinyl tarps require drain holes in order to prevent rain water from pooling. Press heated rod (Ø1/4"-1/2") through center of closed tarp to create drain hole with sealed edges.
2. Finished length of tarp may be longer than box length at time of order. Excess material will wrap around roll tube.
3. To reduce wind whip and extend tarp life, keep tension applied to tarp while driving vehicle.
4. Store tarp retracted inside cover when not in use to keep rain or snow from collecting on cover.

MORE QUALITY PRODUCTS FROM SHUR-CO.®

- Value Series Shur-Lok®
- Super Duty Shur-Lok®
- Value Series Belt & Ratchet
- Premium Belt & Ratchet
- Shur-Lok® Junior
- Cable-Lok™ Spool Tarp
- 3500 Series Electric Shur-Lok®
- Value Series Electric Shur-Lok®
- Super Duty Electric Shur-Lok®
- SMARTrailer™ Accessories
- SMARTranSMitter™
- ProTrap® Electric Hopper Door Opener
- Electric Turning Point Bow™ System
- Shur-Trak II™ Cable System
- Cover-Pro II® Cable System
- UltraSteel Arm System
- Shur-Matic® Arm System
- Fitted & Flat Covers
- Turning Point Bow™ System
- Combine Hopper Ext. Covers
- Stock & Custom Flatbed Tarps
- Load Control Line
- Genuine Replacement Tarps
- Genuine Replacement Parts
- Solar Power Pack

ENGINEERED TARPING SOLUTIONS

