



THE FIRST – AND STILL THE BEST – ON THE MARKET
Shur-Lok® Roll Tarp for End Dumps



Built Solid to Grow Your Profit Margins

A004BD-0111

Shur-Lok® provides you with watertight dependability, for increased productivity and less downtime – because more loads mean more profit.

The Shur-Flex™ crank offers convenient flexibility. It folds at the knuckle and secures with offset or pinless offset retainers – no more pin-and-cable hassles.

The front fabric cap makes it easier to come over the top of the doghouse. Double bows secure into a double bow bracket – exactly the right spacing for tightening down the front of the tarp.

The front stretch roll return guides the roll tarp over the end cap. Reinforced stitching along the radius corner of the fabric cap helps the tarp withstand the stresses of highway speed.

Key Features: Aluminum Latchplate, Front Fabric Cap, Rear Fabric Cap/Flap, Easy-Off Tarp Stops, Shur-Flex™ Crank Arm, Front Roll Return, Standard Retainers, 22-Oz. Vinyl Tarp. *Standard and aluminum bow kits have a ridge strap standard; heavy-duty and Turning Point™ bow kits have a ridgepole. Flexbow® kits do not come with ridge support. Heavy-duty bow kits have the Shur-Return™; all others come with a stretch cord return.*

For more information, contact:

SHUR-CO® OF SD | 800.474.8756
2309 Shur-Lok St., Yankton

SHUR-CO® OF ND | 877.868.4488
920 38th St. NW, Exit 66, Fargo

SHUR-CO® OF IA | 866.356.0245
3839 Midway Blvd., Ft. Dodge

SHUR-CO® OF IL | 866.356.0246
4350 E. Boyd Rd., Decatur

SHUR-CO® OF OH | 866.356.0242
1100 N. Freedom, State Rt. 88 & 14, Ravenna

SHUR-CO® OF CO | 866.355.9173
10220 Brighton Rd., Unit #1, Henderson

SHUR-CO® OF TX | 866.689.0039
34505 I-10 West, S. Frontage Rd., Brookshire

SHUR-CO® OF OK | 866.356.0243
1604 East, U.S. Hwy 66, El Reno



www.shurco.com

Box Details

CONTACT INFORMATION

NAME _____
 ADDRESS _____
 CITY _____ STATE _____ ZIP _____
 PHONE _____ FAX _____
 BOX/TRAILER MAKE _____

BOX DIMENSIONS

A _____ UPPER BOX LENGTH
 B _____ UPPER BOX WIDTH
 Front _____ Center _____ Rear _____
 N _____ TOP RAIL WIDTH
 U _____ INSIDE BOX WIDTH
 X _____ BOX HEIGHT

CORNER CONFIGURATION | *Must select one — see Figure 1*

SQUARE DIAGONAL RADIUS/NO RECESS
 SQUARE RECESS DIAGONAL RECESS

C _____ OUTSIDE CORNER RADIUS | *For all radius fronts*

D _____ RECESSED WIDTH E _____ FLAT ACROSS FRONT
 F _____ FRONT-CORNER POST G _____ GUSSET LENGTH
 V _____ FLAT ACROSS DIAGONAL W _____ DIAGONAL DEPTH

TARP RAIL STYLE | *See Figure 2*

SQUARE SELF CLEANING SQUARE W/PLANKS*

*Are planks flush with outside of top rail? Y / N (*Circle one.*)

TARP RAIL DROP | *See Figure 3*

FRONT REAR

L _____ BULKHEAD DEPTH O1 _____ FRONT TOP RAIL DROP
 M _____ THRESHOLD DEPTH O2 _____ REAR TOP RAIL DROP

FRONT END STYLE | *See Figure 4*

RAISED FRONT SHIELD RAISED SHIELD/FLAT TOP RAIL
 SLANT W/CURVED RAISED FRONT SLANT W/SQUARE RAISED FRONT
 SQUARE TUB W/INVERTED RAM

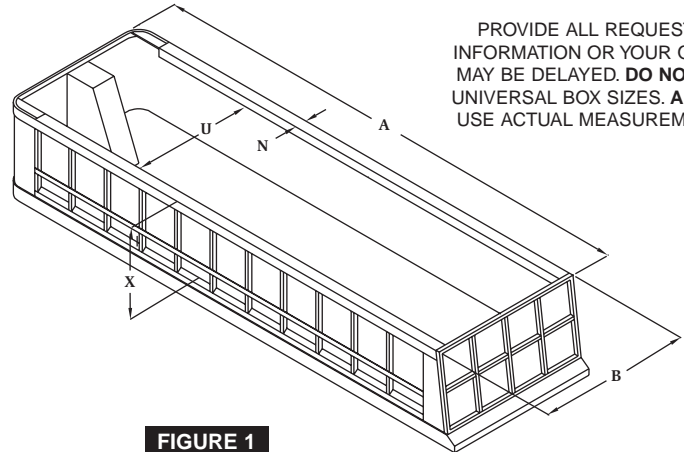
AD _____ CYLINDER HEIGHT J _____ UPPER SHIELD WIDTH
 AE _____ DOGHOUSE DEPTH J1 _____ DOGHOUSE WIDTH
 H _____ SHIELD HEIGHT J _____ LOWER SHIELD WIDTH

REAR DUMP STYLE | *See Figure 5*

OVERSLUNG HINGE GATE COMBO DOOR HINGE GATE
 HIGH POWER LIFT GATE RAISED HINGE GATE

AF _____ HINGE DEPTH AK _____ HINGE HEIGHT
 B _____ BOX WIDTH/REAR

TARP WT. 18-OZ. 22-OZ. TARP COLOR(S) _____



PROVIDE ALL REQUESTED INFORMATION OR YOUR ORDER MAY BE DELAYED. **DO NOT** USE UNIVERSAL BOX SIZES. **ALWAYS** USE ACTUAL MEASUREMENTS.

FIGURE 1

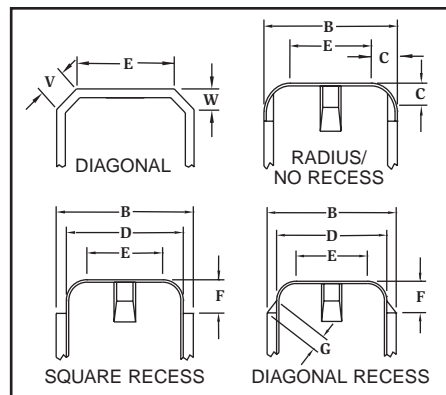


FIGURE 2

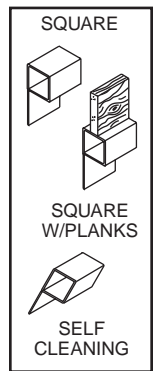


FIGURE 3

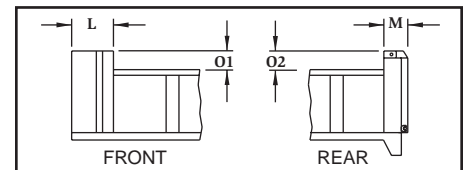


FIGURE 4

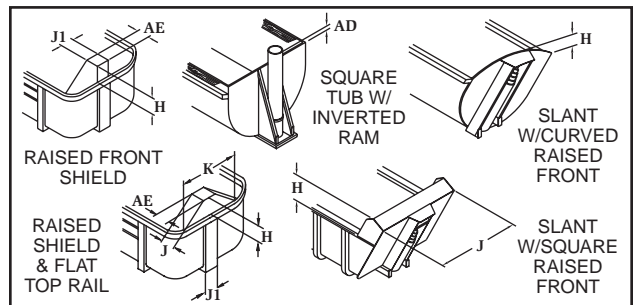


FIGURE 5

