



ENGINEERED TARPING SOLUTIONS

P/N 1117781 Rev. C

INSTALLATION INSTRUCTIONS



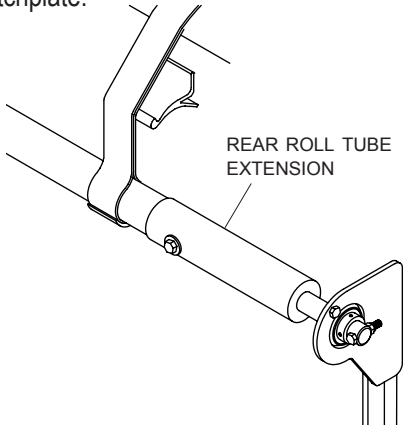
Exposed Spline and 3500 Rear Flex Arm Flange Bearing Retro-Fit

READ BEFORE INSTALLING

PO BOX 713 ■ 2309 SHUR-LOK STREET ■ YANKTON, SD 57078-0713
PHONE 1-800-4-SHUR-LOK (1-800-474-8756) ■ FAX 605-665-0501
www.shurco.com

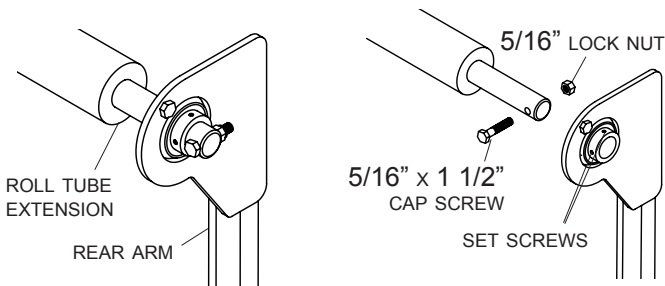
SHOP ONLINE: www.shopshurco.com

STEP 1: Roll tarp closed and let roll tube hang loosely below latchplate.

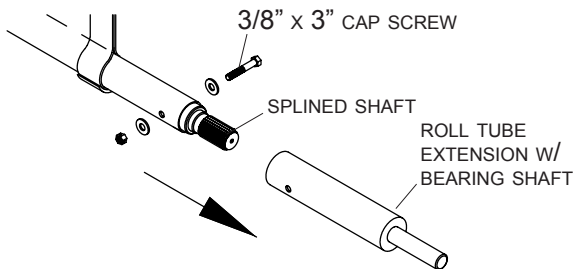


⚠ WARNING
 Flex arms are under tension while torsion springs are engaged. Use caution while assembling and disassembling arms. Failure to read and follow instructions could result in serious injury or death.

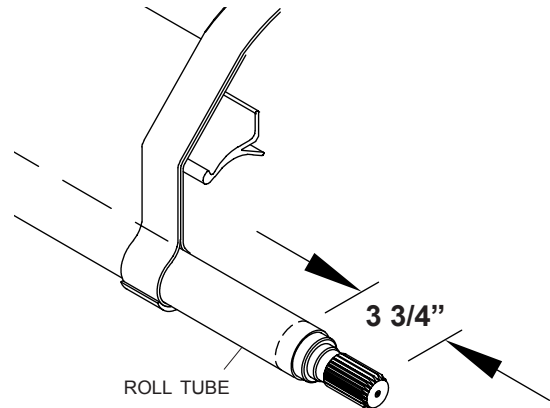
STEP 2: At rear of box, remove 5/16" x 1 1/2" cap screw and lock nut from bearing shaft. Loosen set screws in bearing, then slide rear arm off from roll tube extension.



STEP 3: Remove 3/8" x 3" cap screw, washers and nut from roll tube extension. Remove roll tube extension from roll tube, exposing splined shaft.

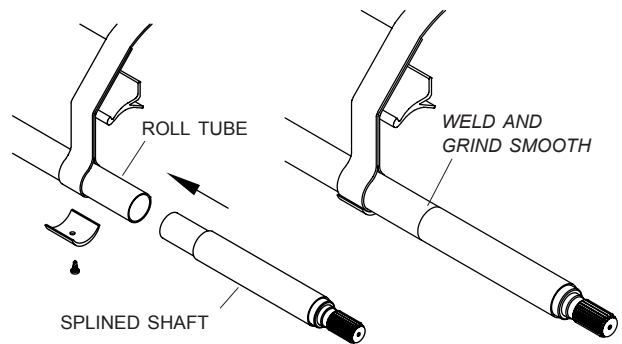


STEP 4: Cut roll tube 3 3/4" from end of spline.



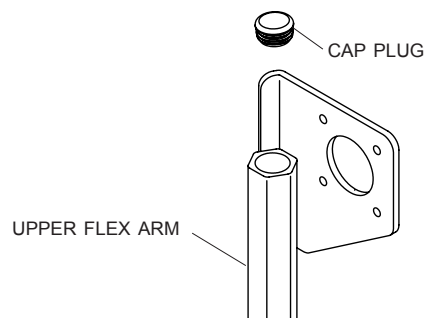
STEP 5: Insert swaged splined shaft weldment into roll tube. Align splined shaft straight with roll tube and weld all around. Grind smooth.

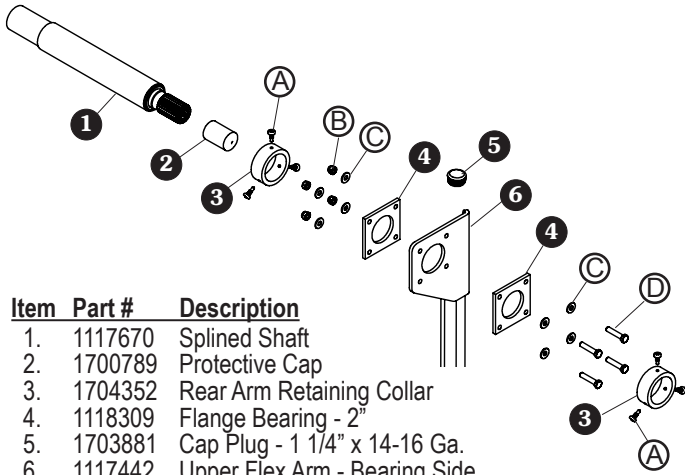
Recommended: Remove last two U-clamps and slide tarp forward. Pull roll tube away from trailer to protect tarp from weld splatter.



To prevent rust, paint all exposed metal such as weld seams, and/or metal exposed by grinding or cutting with corrosion resistant paint.

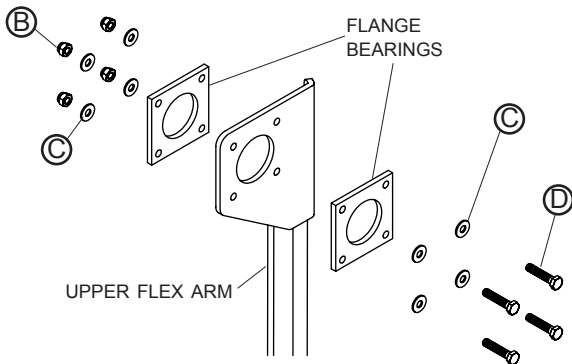
STEP 6: Install cap plug on new rear upper flex arm.



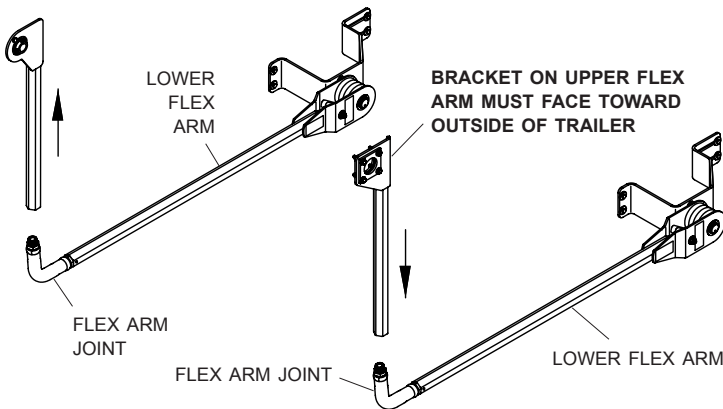


Item	Part #	Description
1.	1117670	Splined Shaft
2.	1700789	Protective Cap
3.	1704352	Rear Arm Retaining Collar
4.	1118309	Flange Bearing - 2"
5.	1703881	Cap Plug - 1 1/4" x 14-16 Ga.
6.	1117442	Upper Flex Arm - Bearing Side
A	1704353	Self-Drilling Screw - 1/4" x 1"
B	1700419	Nylon Lock Nut - 5/16"
C	1700427	Flat Washer - 1/4"
D	1703487	Cap Screw - 5/16" x 1 1/2"

STEP 7: Fasten flange bearings on each side of upper flex arm bracket with cap screws **D**, washers **C** and nuts **B**. **Finger tighten only to allow for adjustment.**

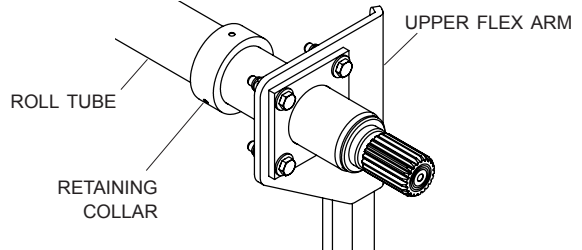


STEP 8: Remove existing upper flex arm from flex arm joint. Replace with new upper flex arm assembly.

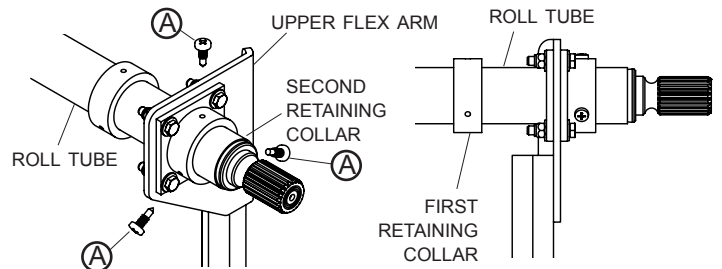


NOTE: Cap plug from old upper flex arm may be removed and inserted on lower flex arm.

STEP 9: Slide first retaining collar over roll tube. Slide roll tube and spline through upper flex arm assembly, extending end of splined shaft until upper flex arm is perpendicular to roll tube.

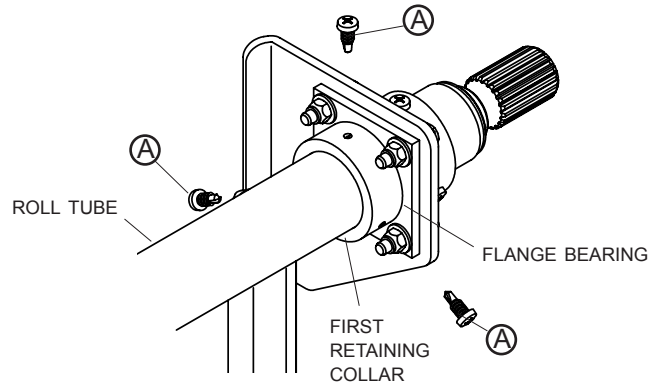


STEP 10: Slide second retaining collar onto roll tube. Align second retaining collar flush against flex arm assembly. Secure retaining collar to roll tube with three screws **A**.



NOTE: Do not leave unattended until flex arm is securely fastened to roll tube extension as shown.

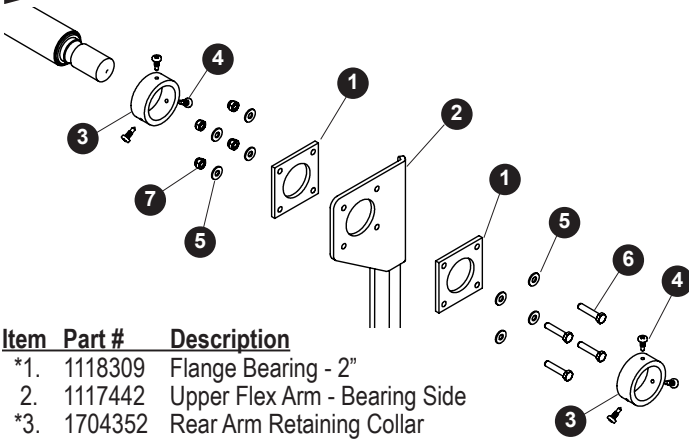
STEP 11: Slide first retaining collar flush with flange bearing and fasten collar to roll tube with three screws **A**.



NOTE: Self-drilling screws must be no less than 1" long to hold.

NOTE: If flange bearing screws have been tightened, they must be loosened, readjusted and tightened securely.

STEP 12: Refasten tarp to roll tube with existing U-clamps and screws, if removed during step 5. Tighten all fasteners securely. Verify that all front and rear flex arm connections are tight.



Item	Part #	Description
*1.	1118309	Flange Bearing - 2"
2.	1117442	Upper Flex Arm - Bearing Side
*3.	1704352	Rear Arm Retaining Collar
*4.	1704353	Self-Drilling Screw - 1/4" x 1"
5.	1700427	Flat Washer - 1/4"
6.	1703487	Cap Screw - 5/16" x 1 1/2"
7.	1700419	Nylon Lock Nut - 5/16"

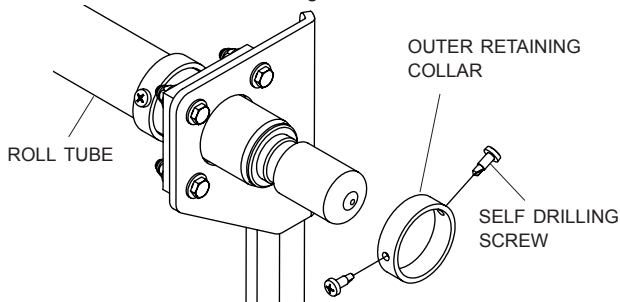
* Provided in Kit

STEP 1: Roll tarp closed and let roll tube hang loosely below latch plate.

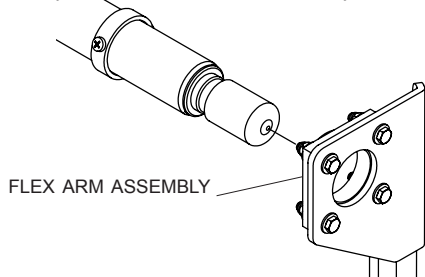
⚠ WARNING

Flex arms are under tension while torsion springs are engaged. Use caution while assembling and disassembling arms. Failure to read and follow instructions could result in serious injury or death.

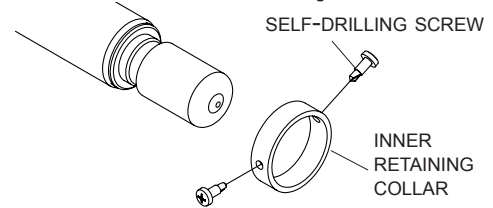
STEP 2: At rear of trailer, remove and discard outer retaining collar and self drilling screws from roll tube.



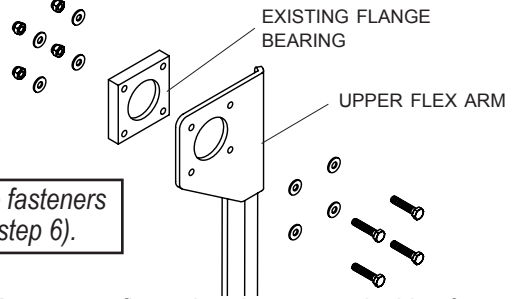
STEP 3: Carefully remove flex arm assembly from roll tube.



STEP 4: Remove and discard inner retaining collar from roll tube.

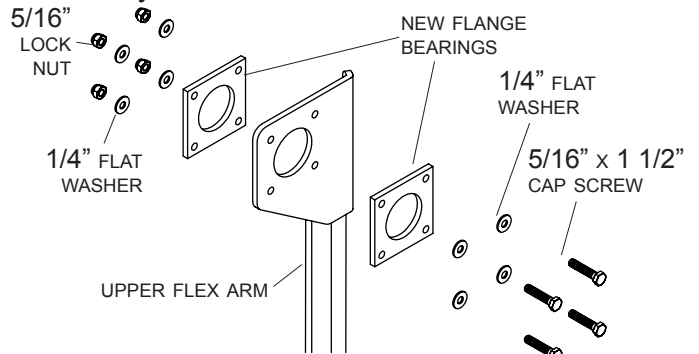


STEP 5: Disassemble components from upper flex arm. Discard existing flange bearing.

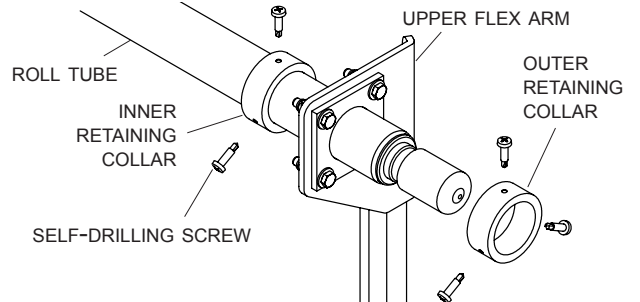


Keep these fasteners for re-use (step 6).

STEP 6: Fasten new flange bearings on each side of upper flex arm bracket with 1/4" x 1 1/2" cap screws, washers and nuts. **Finger tighten only to allow for adjustment.**



STEP 7: Slide new inner retaining collar and upper flex arm bracket, and outer retaining collar over roll tube. Make sure rear flex arm is vertical. Fasten each retaining collar to roll tube with three self-drilling screws. Tighten flange bearing screws securely.



NOTE: Self-drilling screws must be no less than 1" long to hold.

The new retaining collars are wider than the old collars. Do not try to fasten new collars at the same locations as old collars.