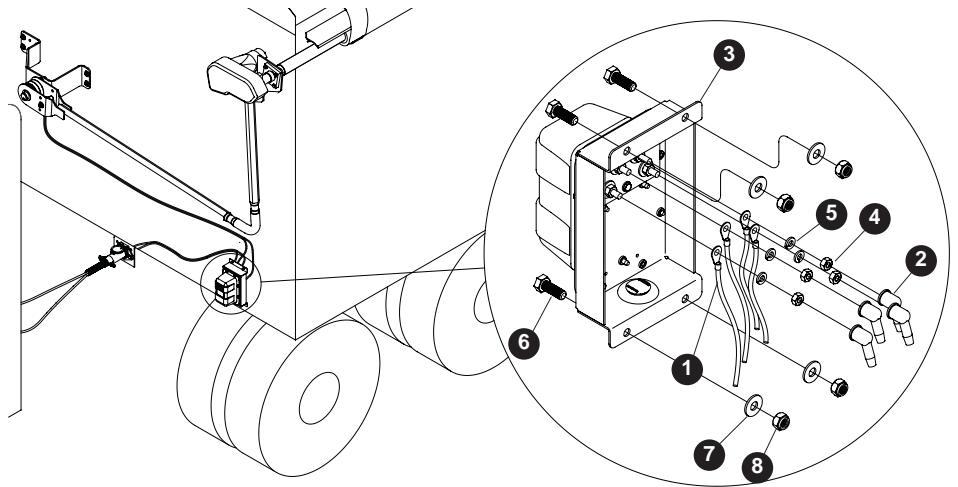
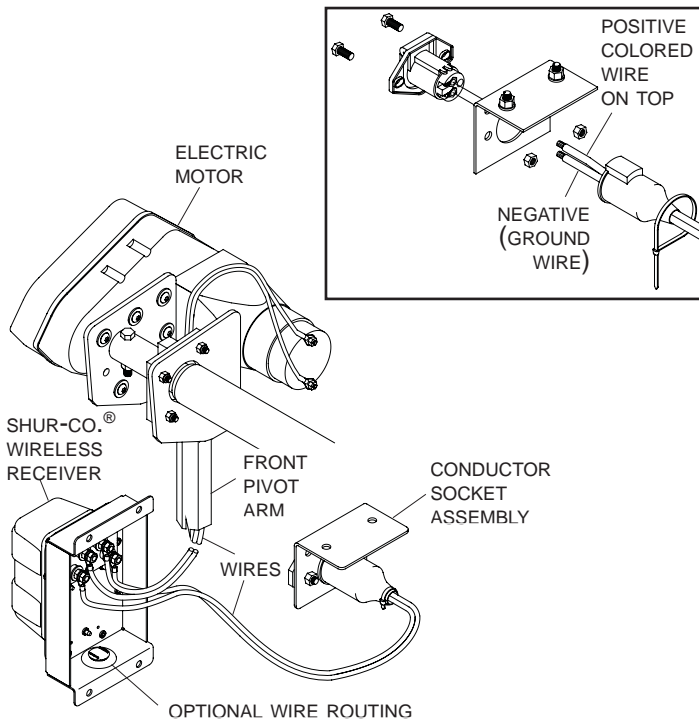


See owner's manual for complete wiring instructions.

Item	Part #	Description
1.	1702707	Ring Terminal - 6 Ga. 1/4" Stud
2.	1704330	Rubber Insulating Boot
3.	1118257	Shur-Co. <sup>®</sup> Wireless Receiver
4.	1700408	Hex Nut - 1/4"
5.	1700436	Lock Washer - 1/4"
6.	1702926	Cap Screw - 5/16" x 7/8"
7.	1201237	Flat Washer - 5/16"
8.	1700419	Nylon Lock Nut - 5/16"



USE DIELECTRIC GREASE (PART #1704378) TO PREVENT CORROSION ON TERMINALS.



**STEP 1:** Identify 6 ga. wire running from electric motor. For the 3500 system route wire through front pivot arm, for all other systems route wire as desired. Insert end of this wire through rubber boots, then crimp 1/4" ring terminals onto wire ends. Remove nuts and lock washers from back of receiver. Place positive wire on upper orange post, and negative wire on upper black post. Secure lock washers and hex nuts. Coat with dielectric grease, and install rubber boots over ring terminals.

**STEP 2:** Run 6 ga. wire from battery/conductor socket to wireless receiver. Insert end of wire through rubber boots, then crimp 1/4" ring terminals onto wire ends. Place positive wire on lower orange post, and negative wire on lower black post. Secure with lock washers and hex nuts. Coat with dielectric grease, and install rubber boots over ring terminals.



### Operation

**A) Open tarp:** Check motor direction by activating switch to "OPEN". If switch is running system backwards, change wire leads on motor to opposite connections.

**B) Close trap:** Push switch to "CLOSE" and hold. Observe trap and release switch when hopper door is fully closed.

**C) Open trap:** Push switch to "OPEN" and hold. Observe trap and release switch when hopper door is fully opened.

**NOTE:** Release switch at end of cycle or modified-reset circuit breaker will trip. After breaker resets, switch will activate motor again. To reduce unnecessary strain on tarp components, release switch at end of each cycle.

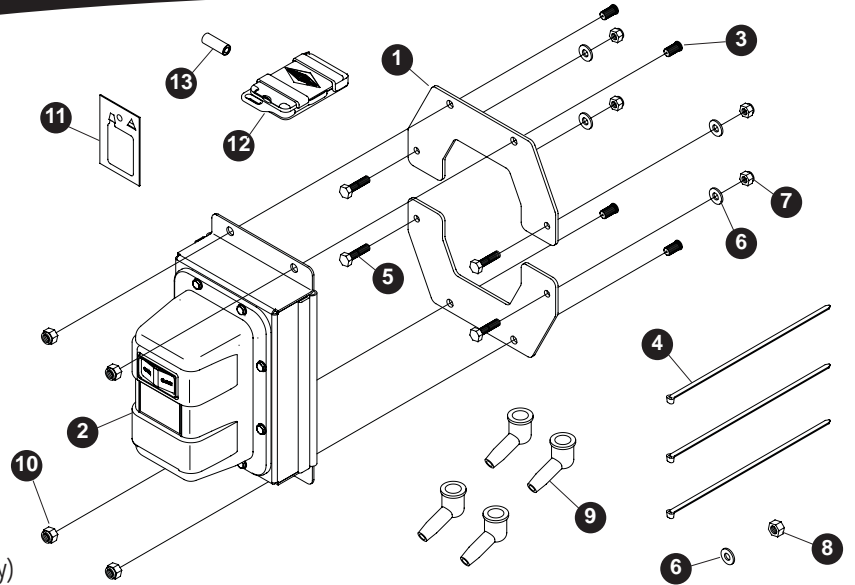
**NOTE:** Pressure Wash: The receiver may be pressure washed, but keep nozzle at least three feet from system while spraying.



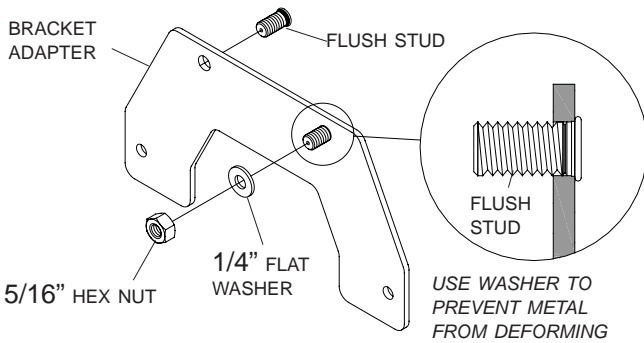
USE DIELECTRIC GREASE TO PREVENT CORROSION ON TERMINALS

**Item Part # Description**

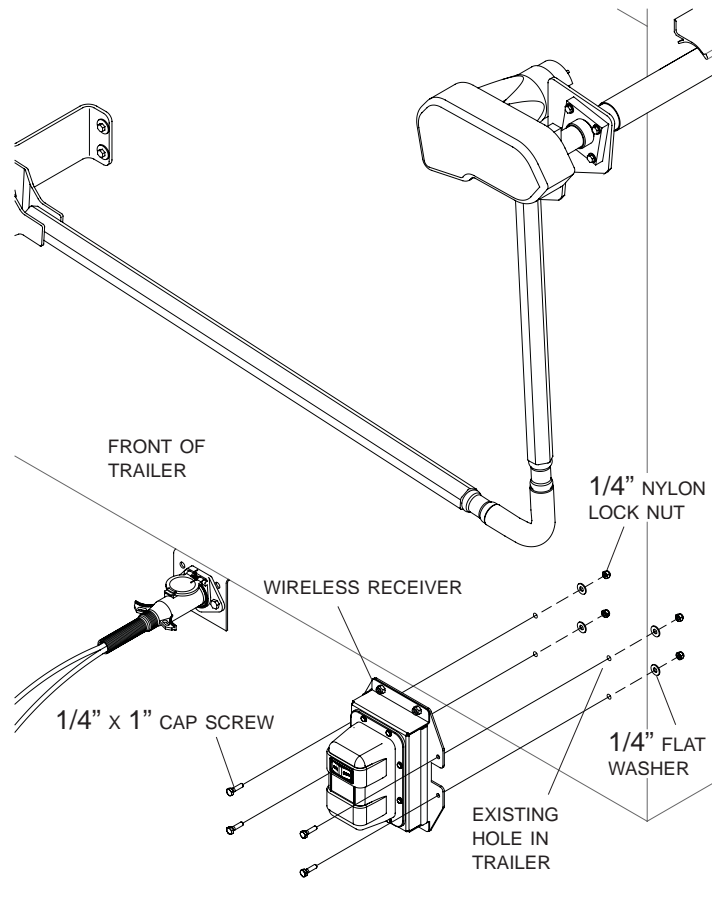
- 1. 1118304 Bracket Adapter
- 2. 1118257 Shur-Co.® Wireless Receiver
- 3. 1704344 Flush Stud
- 4. 1703231 Cable Tie
- 5. 1700381 Cap Screw - 1/4" x 1"
- 6. 1700427 Flat Washer - 1/4"
- 7. 1701543 Nylon Lock Nut - 1/4"
- 8. 1700411 Hex Nut - 5/16"
- 9. 1704330 Rubber Insulating Boot
- 10. 1700419 Nylon Lock Nut - 5/16"
- 11. 1704378 Dielectric Connector Protector - .14 oz
- 12. 1118437 SMARTransmitter™
- 13. 1704597 SMARTransmitter™ Battery (High Capacity)



**STEP 1:** Insert flush studs through holes shown in bracket adapters. Slide 1/4" washer and 5/16" hex nut (not lock nut) over flush stud. Tighten nut onto each flush stud, tightening studs into bracket adapters until stud heads are nearly flush with adapters. Remove and discard washer and nut.



**STEP 3:** Align holes in bracket adapters with existing holes in trailer. Fasten wireless receiver assembly to front of trailer with 1/4" x 1" cap screws, flat washers, and nylon lock nuts.



**STEP 2:** Fasten wireless receiver to bracket adapters with 5/16" nylon lock nuts.

