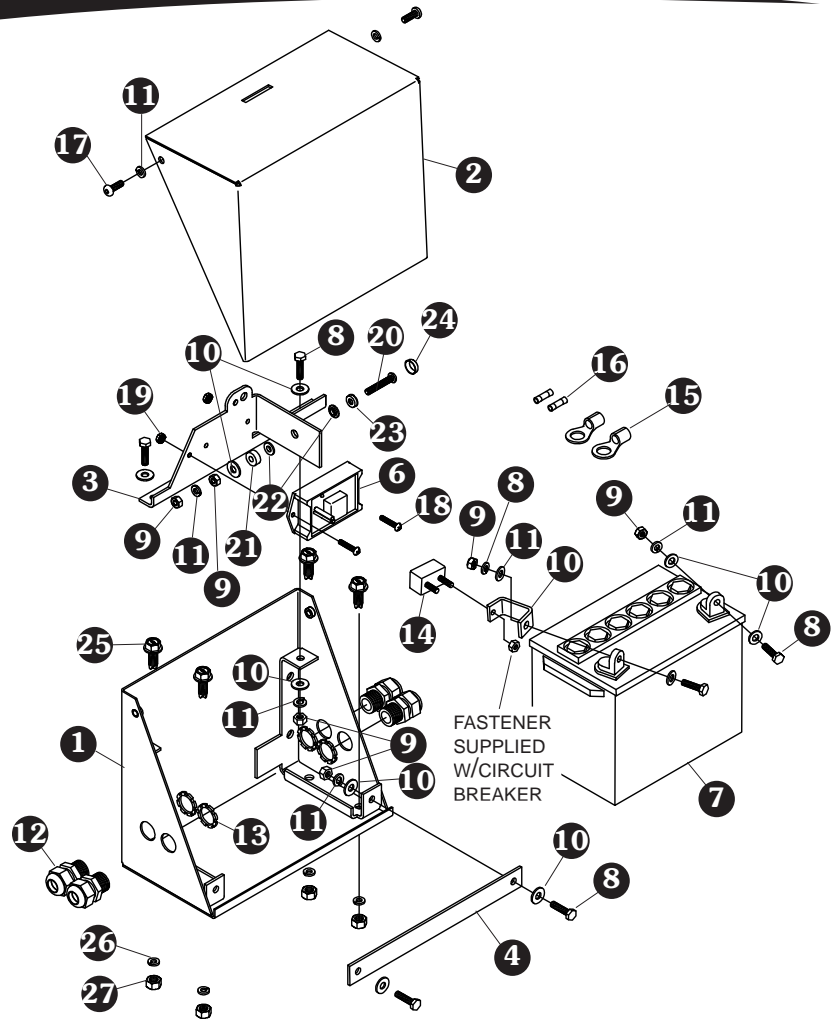
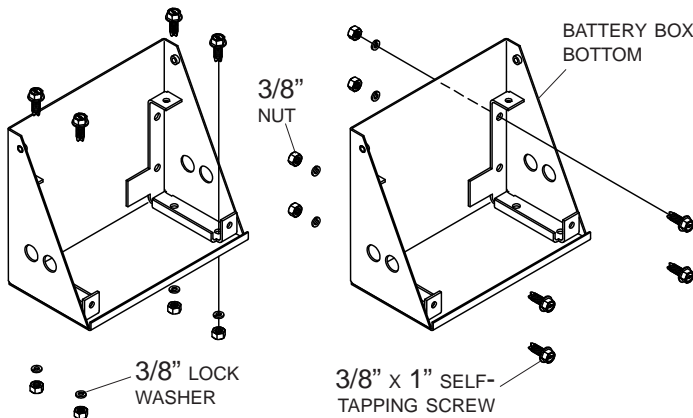


Item	Part #	Description
1.	1119783	Battery Box Bottom - Trickle
2.	1117734	Battery Box Top
3.	1117740	Battery Box Hold Down Bracket
4.	1117739	Battery Box Front Bracket
5.	1117741	Battery Clip
6.	1704618	Battery Charging Module
7.	1704161	Solar Gel Battery
8.	1700381	Cap Screw - 1/4" x 1"
9.	1700408	Hex Nut - 1/4"
10.	1700427	Flat Washer - 1/4"
11.	1700436	Lock Washer - 1/4"
12.	1704152	Dome Nut - 1/2"
13.	1704187	Lock Nut - 1/2"
14.	1704354	Modified-Reset Circuit Breaker - 40 Amp
15.	1703244	Ring Terminal - 6 Ga. x 3/8" Stud
16.	1704154	Parallel Connector - 16-14 Ga. #6
17.	1703327	Button Hd. Cap Screw - 1/4" x 5/8"
18.	1702654	Round Hd. Machine Screw - #10 x 1"
19.	1702653	Nut/Machine Screw w/Washer - #10
20.	1704238	Button Hd. Cap Screw - 1/4" x 1 1/2"
21.	1118250	Plastic Washer - Orange
22.	1704263	Nylon Shoulder Washer - 1/4"
23.	1704310	Flat Bottom Washer - 1/4"
24.	1704311	Snap-Cap - 12-12 Black
25.	1700400	Self-Tapping Screw - 3/8" x 1"
26.	1700434	Lock Washer - 3/8"
27.	1700407	Hex Nut - 3/8"



**Battery Box Bottom**

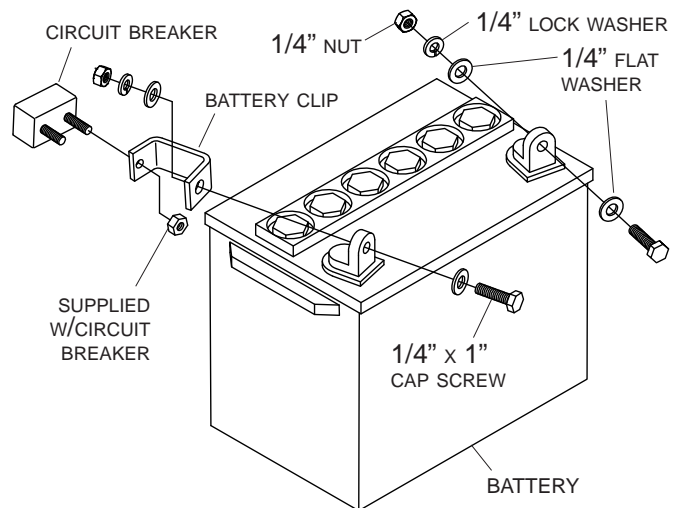
**STEP 1:** Using either bottom holes or back holes in battery box bottom as a guide, mark hole locations on trailer. Drill 5/16" holes and fasten battery box bottom to trailer with 3/8" x 1" self-tapping screws, lock washers and nuts.



**NOTE:** Install backer plate if trailer wall is less than 1/8" thick.

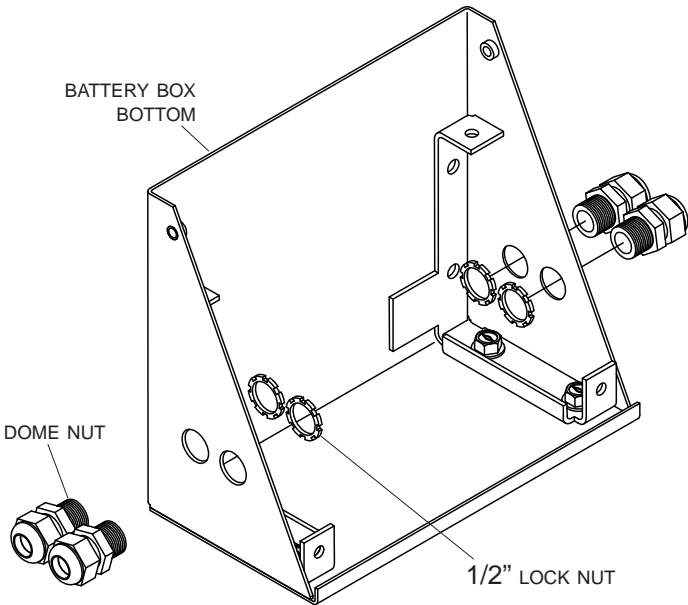
**Battery Clip & Circuit Breaker**

**STEP 2:** Fasten battery clip and circuit breaker to battery with 1/4" cap screws, flat washers, lock washers and nuts as shown. Fasten circuit breaker with nut provided.



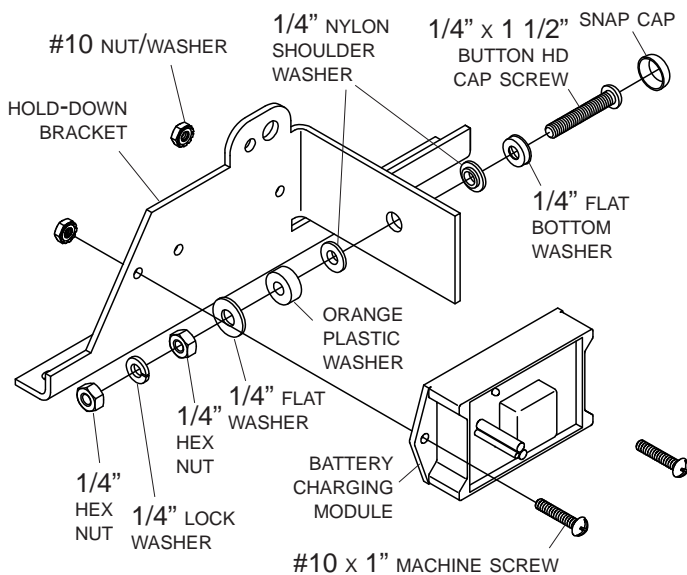
**Dome Nuts & Hold-Down Brackets**

**STEP 3:** Secure dome nut strain reliefs to battery box bottom with 1/2" lock nuts.



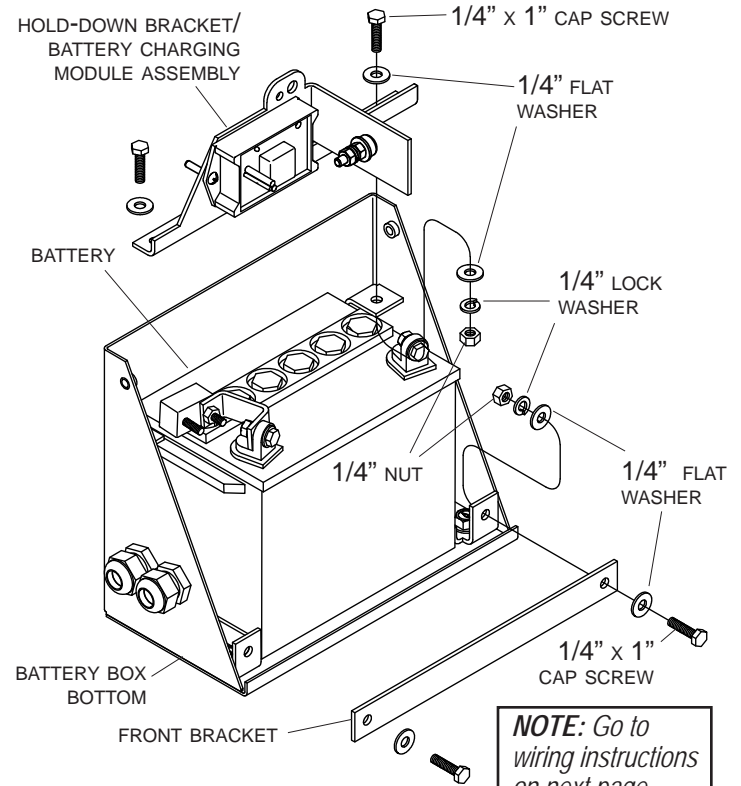
**Battery Charging Module**

**STEP 4:** Fasten battery charging module to hold-down bracket with #10 x 1" machine screws and nut/washers. Install 1/4" x 1 1/2" button head cap screw, flat bottom washer, shoulder washers, orange plastic washer, flat washer, hex nut, lock washer, second hex nut and snap cap as shown.



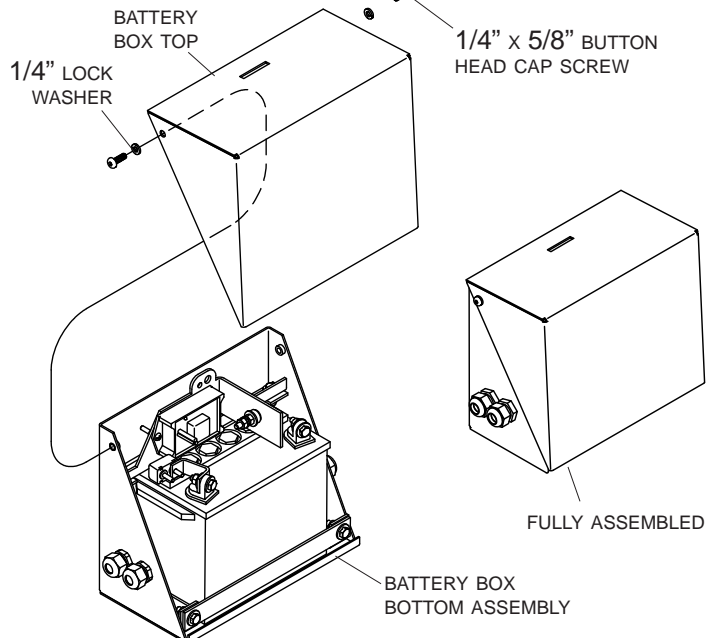
**Battery & Brackets**

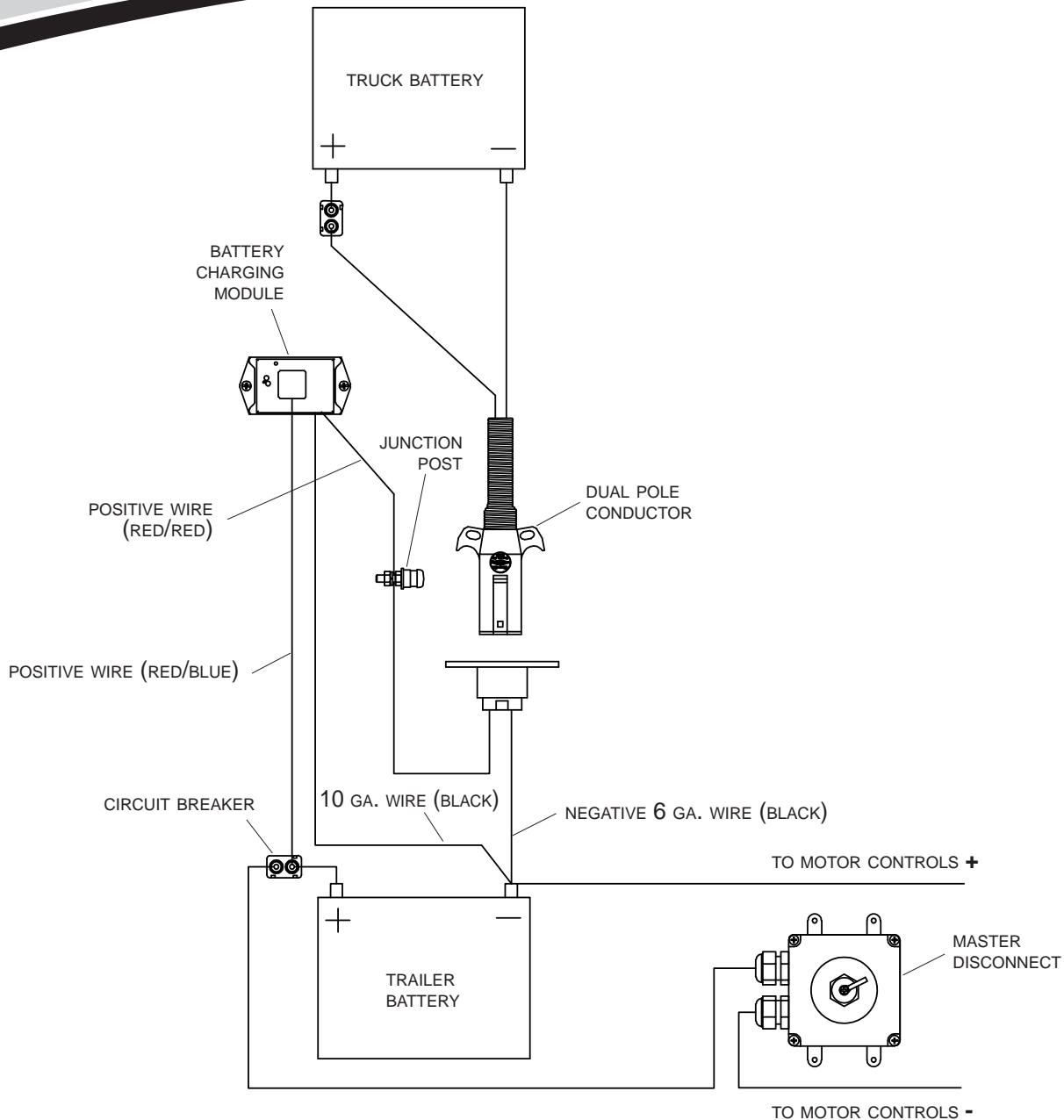
**STEP 5:** Place battery in battery box bottom. Install hold down bracket and front bracket with 1/4" x 1" cap screws, flat washers, lock washers and nuts.



**Battery Box Top**

**STEP 6:** Secure battery box top to battery box bottom with 1/4" x 5/8" cap screws and lock washers.





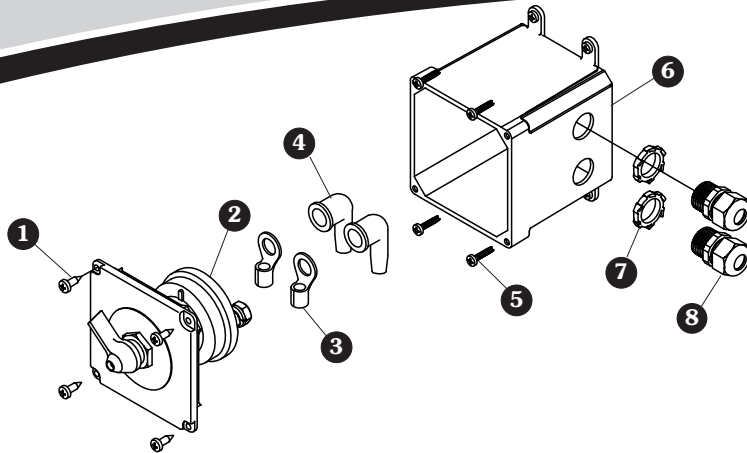
**Wiring**

**NOTE:** Connect circuit breaker after completing step 1.

**STEP 1:** Connect positive lead from dual pole conductor and red/blue wire from battery charging module to junction post. Connect negative lead from dual pole conductor and black wire from battery charging module to negative trailer battery post. Connect red/red wire from battery charging module to circuit breaker, then to positive post on trailer battery.

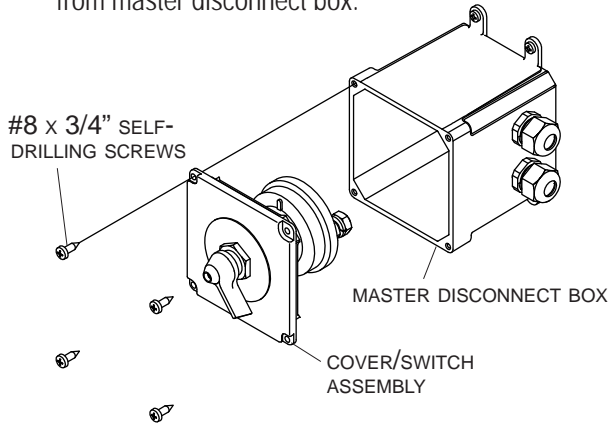
**STEP 2:** Connect negative motor lead to negative post on trailer battery. Connect circuit breaker to master disconnect. Connect positive motor lead to master disconnect.



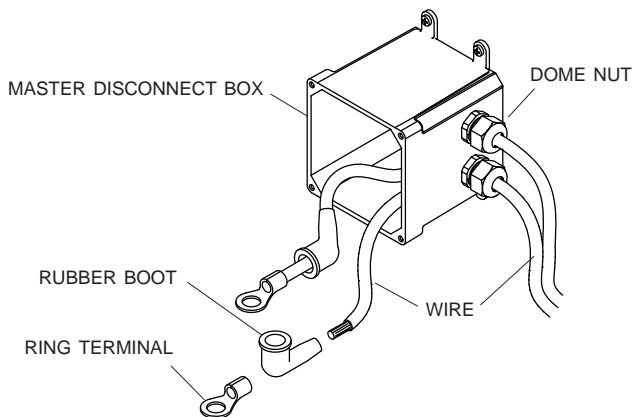


Item	Part #	Description
1.	1704405	Self-Drilling Screw - Pan Hd - #8 x 3/4"
2.	1704283	Master Battery Disconnect Switch
3.	1704153	Ring Terminal - 16-14 Ga. x 1/4" Stud
4.	1704330	Rubber Boot
5.	1704338	Self-Tapping Screw - 1/4" x 1"
6.	1118556	Solar Master Disconnect Box
7.	1704187	Lock Nut - 1/2"
8.	1704152	Dome Nut - 1/2"
9.	1703822	6 Ga. Dual Conductor 259 Strand Wire (not shown)

**STEP 1:** Unfasten screws and remove cover/switch assembly from master disconnect box.



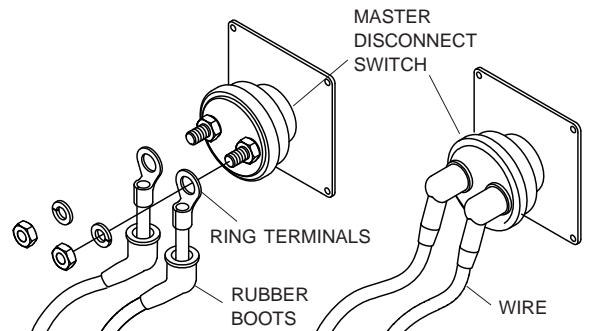
**STEP 2:** Run positive 6 ga. wire ends through dome nuts on master disconnect box. Run wire ends through rubber boots and crimp 16 to 14 ga. ring terminals to ends of wire.



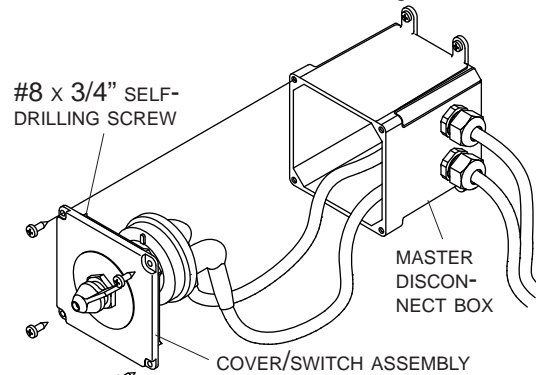
*Cut wires to length and strip only enough wire insulation to install ring terminals. Insert bare wire into ring terminals and crimp securely.*

Labels: STRIP WIRE INSULATION, RING TERMINAL, CRIMP SECURELY

**STEP 3:** Connect wires to master disconnect switch. Coat with dielectric grease and install rubber boots over ring terminals.



**STEP 4:** Re-install cover/switch assembly to master disconnect box. Fasten with #8 x 3/4" self-drilling screws.



**STEP 5:** Locate master disconnect switch inside kingpin in an easily accessible area. Fasten box to trailer with 1/4" x 1" self-drilling screws.

